



ADDENDUM NO. 6

Issue Date: July 1, 2024

Project Name: Indian River County Fire Station 7 (IRC-1911)

Bid Number: 2024041

Bid Opening Date: **July 10, 2024**

This addendum is being released to answer questions received to date. The information and documents contained in this addendum are hereby incorporated in the invitation to bid. **This addendum must be acknowledged where indicated on the bid form, or the bid may be declared non-responsive.**

Questions and Answers

1. Can you please provide us with the Itemized Bid Schedule in Excel Format?
See attached IBS in excel format
2. Drawing E-0 shows symbols for Television systems, Sound System, Paging System, Intercom, Voice Data, Doorbell. On the electrical drawing E-3 it only shows the following plotted:
Fire alarm
Paging System Speakers
Structured Cabling
Doorbell
It does show door control panel but also says to run conduit for future access control. Is this by owner?
CCTV in specs but nothing on drawings, no intercom shown, No sound system shown TV outlets shown, but not the actual A/V equipment (TVs and projectors). Push Buttons shown but no spec. What are you looking for there?
Access Control will be by owner, Contractor to provide conduit and back boxes
TV's are pre-wired with RG-6 cable back to TBB. Paging system provided wired back to office next to FACP
3. We did not see an irrigation drawing. Please advise if there will there be one provided.
The Irrigation plan will be by the contractors selected consultant, passed on the landscaping plan provided in the civil set.
4. Can you please provide us with the EX1 Truck Turn Plan - Hydrant Flow Test, as it is missing in the plans.
See included plan – one set signed and the other unsigned to assist in quantity takeoffs.

Addendum 6

5. Door marks 4A, 4B, 4C, 9, 12, 20A, 20B, 20C, 20D, 20E, 20F, 323, 33, 34, 38, and 39 are on door schedule and not on hardware schedule. Please advise.
See attached Door hardware schedule
6. DATA LOCATIONS- How many cables will be required per data drop? Is there a preferred manufacturer for the low voltage install?
Per Keynote #2 on sheet E-3, (1) CAT6 cable to each drop
7. TV LOCATIONS- How many cables will be required per TV drop? Will they require RG-6 or CAT6 or both?
(1) RG-6 to each TV
8. WIRELESS ACCESS POINTS- No WAP locations listed on drawings, are they needed? How many cables per wireless access point will be required? What category and color of cable will be required? Will the cable plug directly into the wireless access points or will a surface mount box with patch cords be needed? Will the wireless access points be provided by the customer and installed by the low voltage contractor? Will the wireless access points require a dedicated patch panel?
Wireless Access points will be provided and installed by owner at a later date
9. DATA ROOM- What will be needed in the main data room? Please provide rack quantity and type of the following: rack mounted patch panels, horizontal and vertical wire manager counts. Will a wall mounted data cabinet be required outside of the main data room? If so, please provide the location and what will be needed inside. Will fiber cabling be required for this project?
With so few data lines, the IDF will only require a small 12U wall mounted rack
10. CAMERAS- No cameras listed on drawings, are they needed? If so, please provide quantities and locations. Will cameras require a dedicated patch panel?
At this time, there are no cameras on for this project.
11. ACCESS CONTROL- Who will be responsible for providing and installing the access control cabling and equipment?
Access control by owner, only provide conduit and black boxes
12. Sheet A-11 states that vestibules 1, 2 and 3 are to receive the poured epoxy floor. Sheet I-1 states that vestibule 1 is to receive the troweled finish concrete with two coats of clear epoxy, and vestibules 2 and 3 are to receive concrete stain. Which is correct?
Vestibules 1,2, and 3 are to match the Apparatus Room flooring which is (2) coats of Clear epoxy over Epoxy paint with grit flecks.
13. Interior Schedule XIV Concrete Floors (P) – Please clarify what the epoxy flooring system is for the apparatus bay. We are not understanding “trowel finish concrete with two coats of clear epoxy over epoxy paint with grit flecks added.”
The apparatus room is not a 2-part epoxy resin/hardener mix with curing reactive process Epoxy paint is often latex paint with a small amount of epoxy which dries quickly. Armopoxy or equal is an epoxy paint available in gray gloss 2 part and available in clear coats. Vinyl color chips/flakes are then added. For color and texture to be selected by owner.

Addendum 6

14. Schedule Shows '315' Number of Crape Myrtle. But We Found Only '31'. Please Verify
The Correct number for Cape Myrtle is 31. The 315 in the schedule is a misprint
15. Schedule Shows '684' Number of Dwarf Schefflera. But We Found Only '640'. Please Verify
The correct number of Dwarf Schefflera is 684. Plan view has been revised to match.
16. Schedule Shows '36' Number of Pampas Grass. But We Found '46'. Please Verify
The correct number of Pampas Grass is 36. Plan view has been revised to match.
17. There is a conflict between the plans and specs. Spec section 07 20 0 calls for Icynene with an R-value of 20. Meanwhile, the wall sections show an R-value of 30. Could this please be clarified?
Provide R-value R-30 for sprayed Poly Icynene Roof Insulation
18. Can we use Rhino Linings TGOC.5 as a substitute for Icynene spray foam insulation?
Brand substitutes will not be considered prior to award, per the contract documents (please see paragraph 6.05 of the General Conditions).

Quantities on the Itemized bid schedule conflict with quantities on the plans. Which supersedes?
Are we permitted to mark up the quantities to the correct amount?

19.
 - o Specific example is for Fencing. Quantity listed is 1618 LF, plans show 1380 LF.
 - o I know versions of this question have been asked on the last 2 addendums but not clearly answered.

If there are any discrepancies between the bid quantities to quantities shown on plans it should come through the Purchasing email as stated in the bid docs so it can be addressed, and all contractors can bid on the same quantities. Do not mark up the bid form, per the note at the bottom of the Itemized Bid Schedule, "IF THERE IS A DISCREPANCY BETWEEN THE PLANS (SUMMARY OF PAY ITEMS) AND THE ITEMIZED BID SCHEDULE, THE BID SCHEDULE WILL BE UTILIZED FOR BIDDING PURPOSES."

Regarding the fencing discrepancy, the correct quantity is 1,294 LF.

Attachments

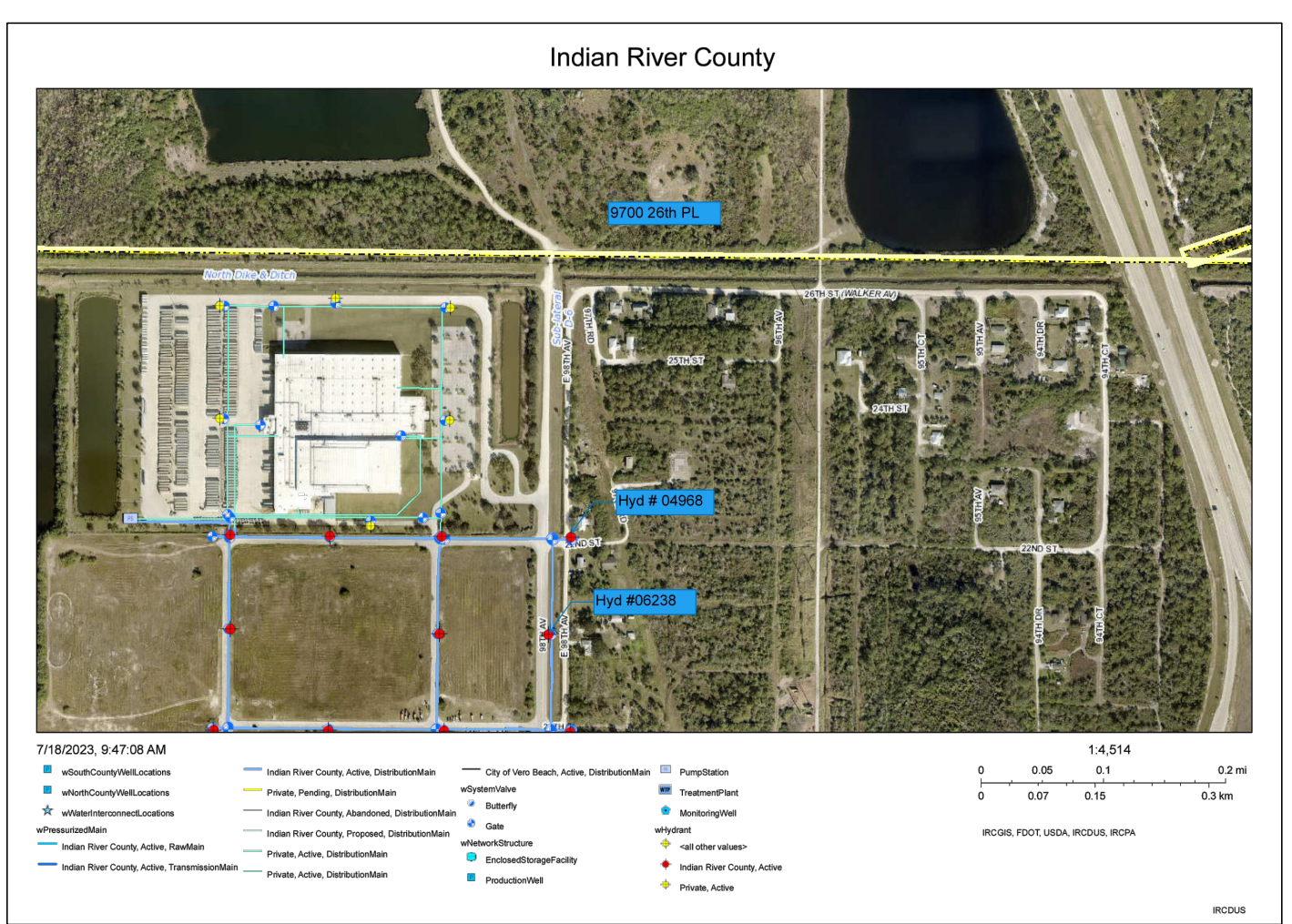
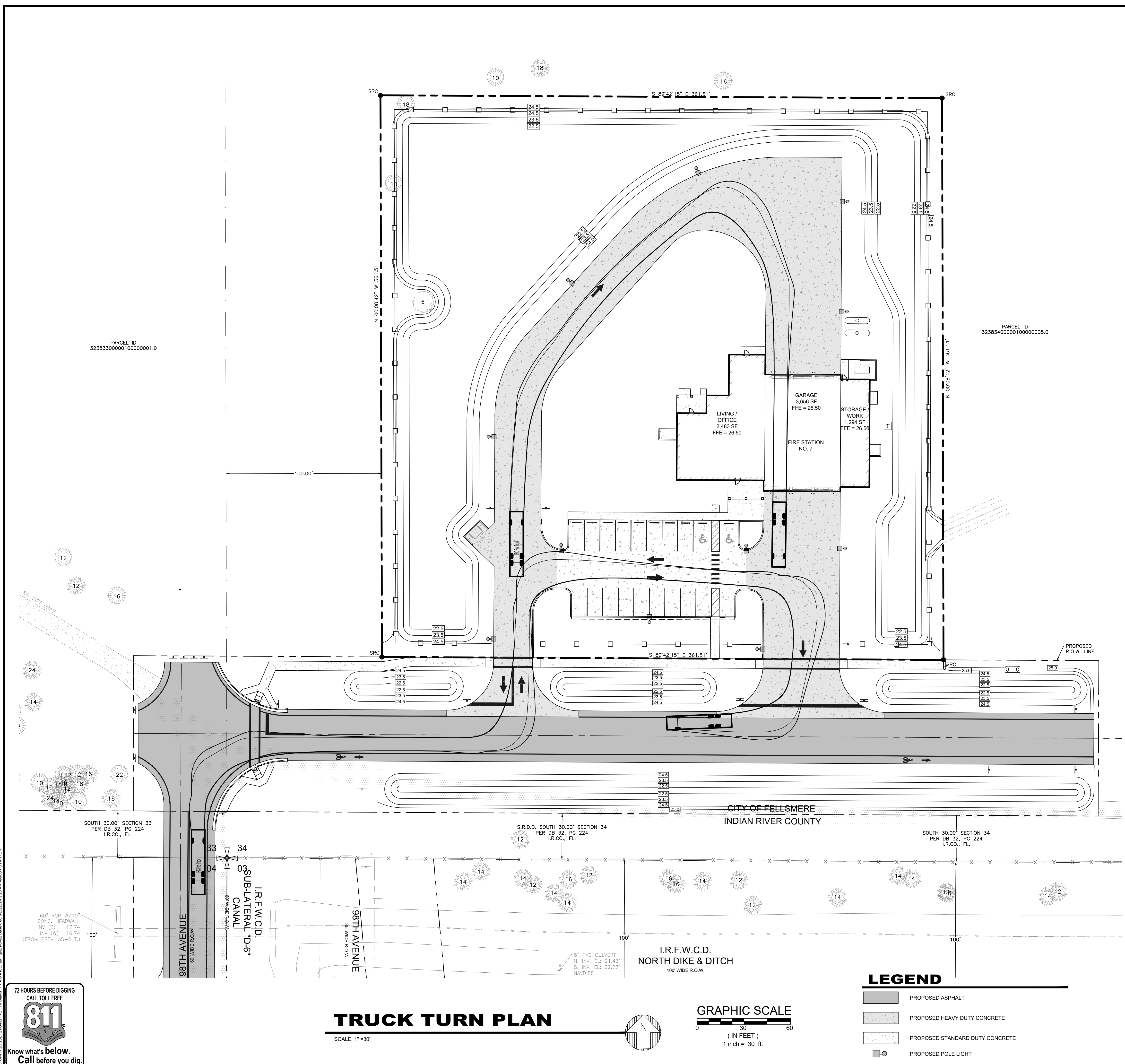
Truck Turn Plan – Unsigned

Truck Turn Plan – Signed

Landscape Plan

Uploaded Separately

Master Itemized Bid Schedule – Excel Format



HYDRANT TEST LOCATIONS

SCALE: N.T.S.

Flow Test Summary Report (IRCDU)

Project: Commercial Structure
Street: 9700 26th Place

Date: 7/17/2023
Time: 8:00 AM
IRCU Inspector: Jahu & Jose

Notes:

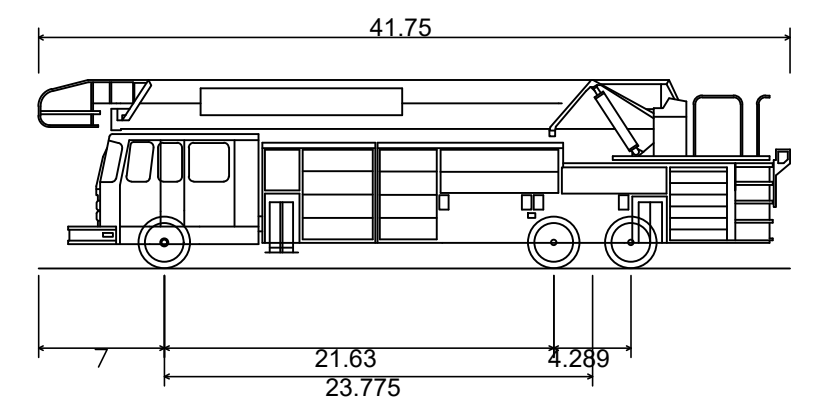
Discharge Based on $Q = 29.83C_d \sqrt{P}^{1.85}$	Hydrant "A" in Test Hydrant	Hydrant "B" in Flowing Hydrant
Where: Q = Flow in gpm	Hydrant "A" No. 04958 HY	Static Pressure "A" 63 PSI
C_d = Discharge coefficient (0.9 used for calcs)	Hydrant "B" No. 05238 HY	Residual Pressure "A" 52 PSI
d^5 = Actual diameter of hydrant orifice	Hydrant "B" Outlet Size 2-1/2"	Pilot Pressure "B" 50 PSI
P = Pilot pressure in psi	Discharge Coefficient 0.9	Theoretical Flow "B" 1190 GPM
	Time Open "B" 8:14 AM	Calculated Flow "B" 1186 GPM
	Time Closed "B" 8:19 AM	
	Water Main Size 8" PVC	

Notes: Gauge Attached to Hydrant to Register Flowing Pressure. Gauge Attached to Hydrant or Pilot tube to Register Static and Residual Pressures.

Pilot, P (psi)	1 1/4"	2 1/2"	4 1/2"	5 1/2"
5	94	375	1216	1655
10	133	531	1719	2340
15	162	650	2106	2866
20	188	750	2431	3309
25	210	839	2718	3700
26	214	856	2772	3773
27	218	872	2825	3845
28	222	888	2877	3916
29	226	904	2928	3985
30	230	919	2978	4053
31	234	934	3027	4120
32	237	949	3075	4186
33	241	964	3123	4251
34	245	978	3170	4315
35	248	993	3216	4378
36	252	1007	3262	4440
37	255	1021	3307	4501
38	259	1034	3351	4561
39	262	1048	3395	4621
40	265	1061	3438	4680
41	269	1074	3481	4738
42	272	1087	3523	4796
43	275	1100	3565	4852
44	278	1113	3606	4908
45	281	1126	3647	4964
46	285	1138	3687	5019
47	288	1150	3727	5073
48	291	1163	3767	5127
49	294	1175	3806	5180
50	297	1186	3844	5232
55	311	1244	4032	5488
60	325	1300	4211	5732
65	338	1353	4383	5966
70	351	1404	4549	6191
75	363	1453	4708	6408
80	375	1501	4863	6618

FIRE FLOW TEST RESULTS

SCALE: N.T.S.



IRC Fire Truck
 Overall Length 41.750ft
 Overall Width 8.630ft
 Overall Body Height 10.461ft
 Min Body Ground Clearance 0.892ft
 Track Width 8.170ft
 Lock-to-lock time 6.00s
 Curb to Curb Turning Radius 35.000ft

TRUCK PROFILE

SCALE: N.T.S.

JOB NO.	21-0492	TH	SS	DATE	JUNE 2022	CHECKED	AS	DATE ISSUED	05/12/2023
DESIGNED									
DRAWN									
REVISIONS									
DATE									
COMMENTS									
APPROVED									
DATE									

MBV ENGINEERING, INC.
 MOA, BOWLES, VILLAMIZAR & ASSOCIATES
 CONSULTING ENGINEERING CA #3728
 1850 SOUTH STREET
 MELBOURNE, FL 32901
 TEL: (321) 255-1199
 FAX: (321) 255-1199
 WWW.MBV-ENG.COM

TRUCK TURN PLAN & FIRE FLOW TEST

IRC FIRE RESCUE FIRE STATION #7
 CITY OF FELLSMERE
 FINAL DEVELOPMENT PLAN

FLORIDA
 CITY OF FELLSMERE

AARON G. STANTON
 LICENSE No. 72460
 STATE OF FLORIDA
 PROFESSIONAL ENGINEER

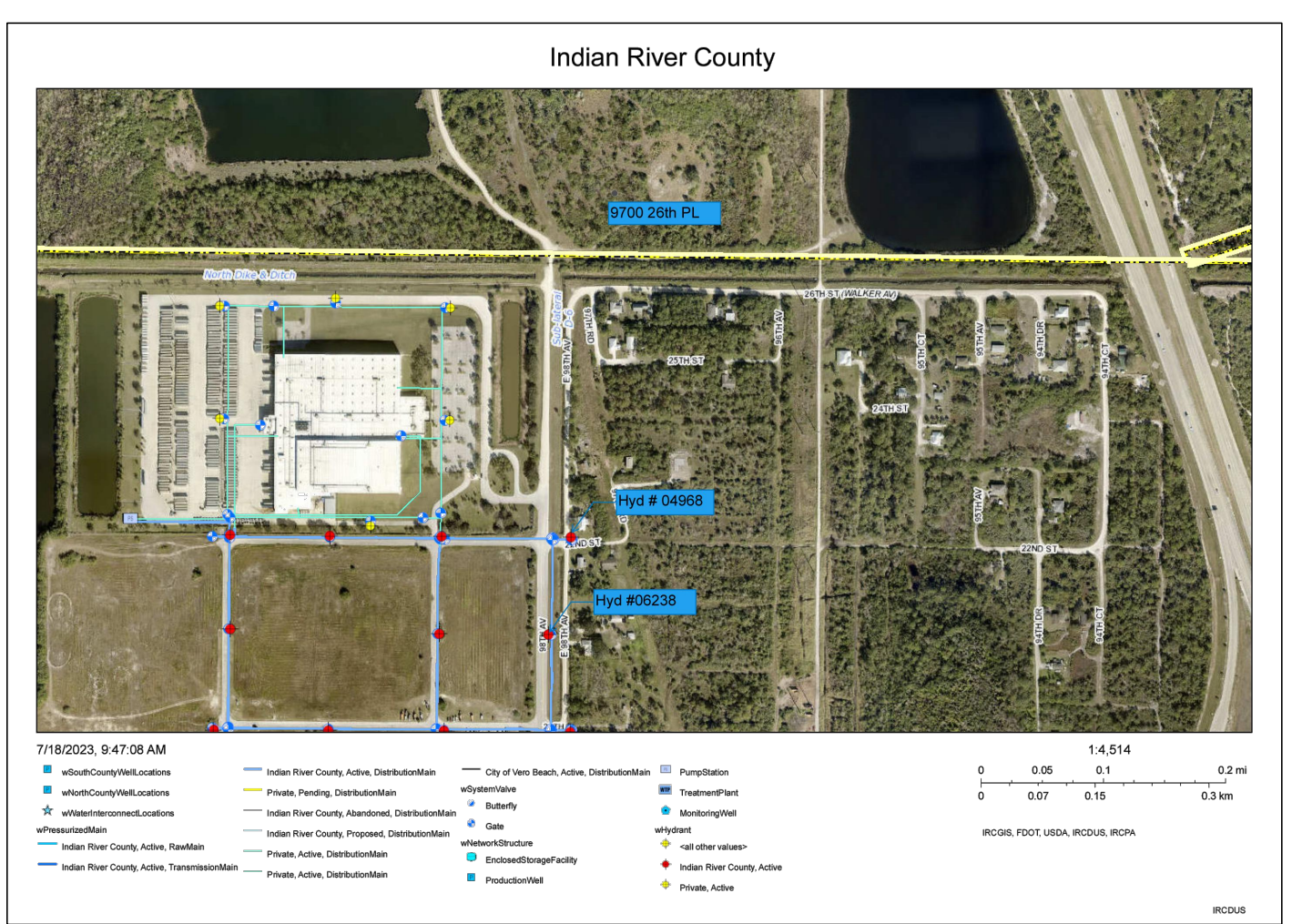
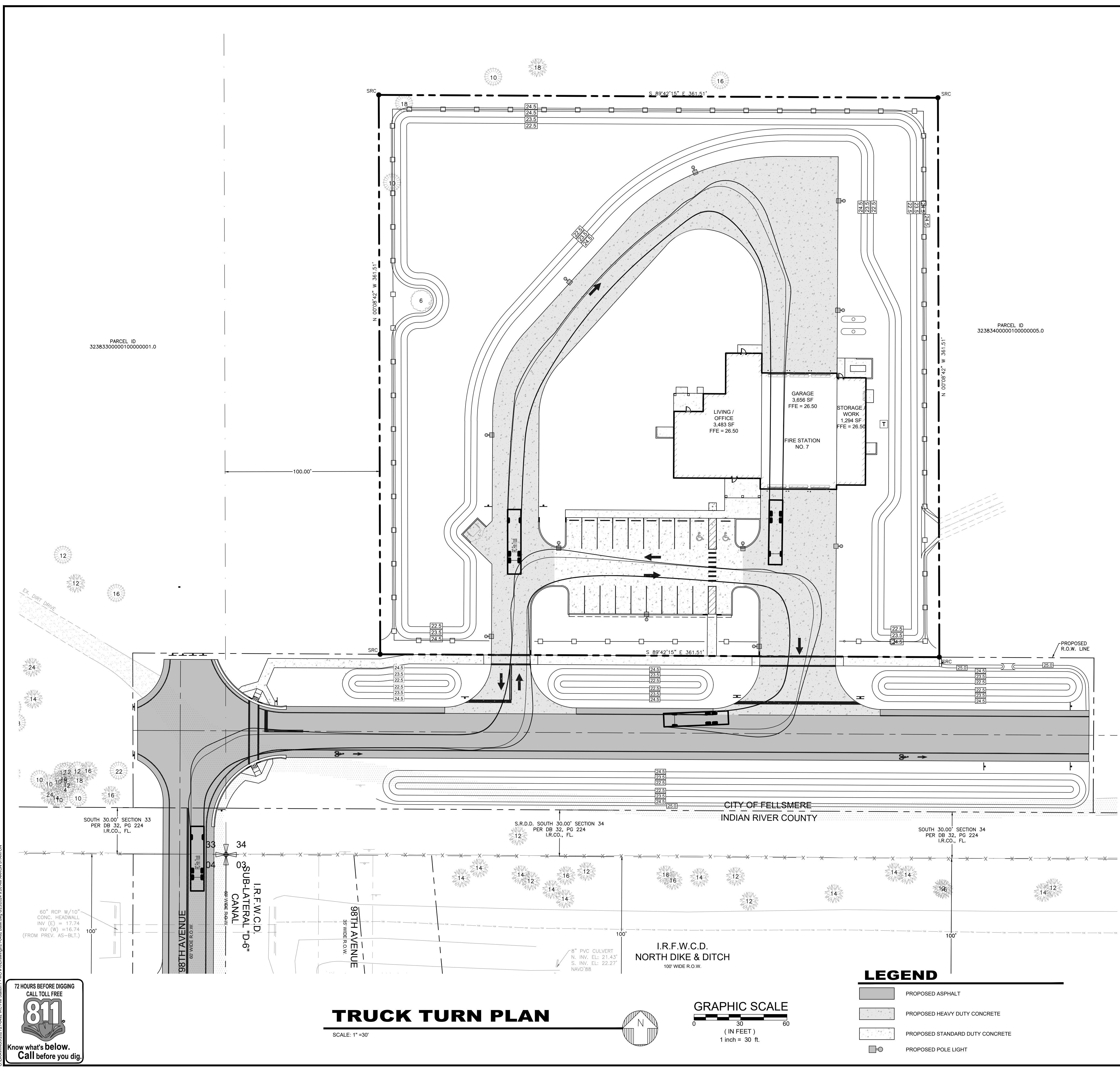
AARON G. STANTON
 FL P.E. #72460

SHEET

EX1

21-0492





HYDRANT TEST LOCATIONS

SCALE: N.T.S.

Flow Test Summary Report (IRCDUS)

Date: 7/17/2023
 Time: 8:00 AM
 Project: Commercial Structure
 Street: 9700 26th Place
 IRCU Inspector: Jahu & Jose

Notes:

Discharge Based on $Q = 29.83C_d \sqrt{P}$	Hydrant "A" in Test Hydrant—Hydrant "B" is Flowing Hydrant
Where: Q = Flow in gpm	Hydrant "A" No. 04958 HY
C_d = Discharge coefficient (0.9 used for calcs)	Static Pressure "A" 63 PSI
d^5 = Actual diameter of hydrant orifice	Hydrant "B" No. 05238 HW
P = Pitot pressure in psi	Residual Pressure "A" 52 PSI
	Hydrant "B" Outlet Size 2-1/2"
	Pitot Pressure "B" 50 PSI
	Discharge Coefficient 0.9
	Theoretical Flow "B" 1190 GPM
	Time Open "B" 8:14 AM
	Time Closed "B" 8:19 AM
	Calculated Flow "B" 1185 GPM
	Water Main Size 8" PVC

Pitot, P (psi) 1/4" 1/2" 3/4" 1"

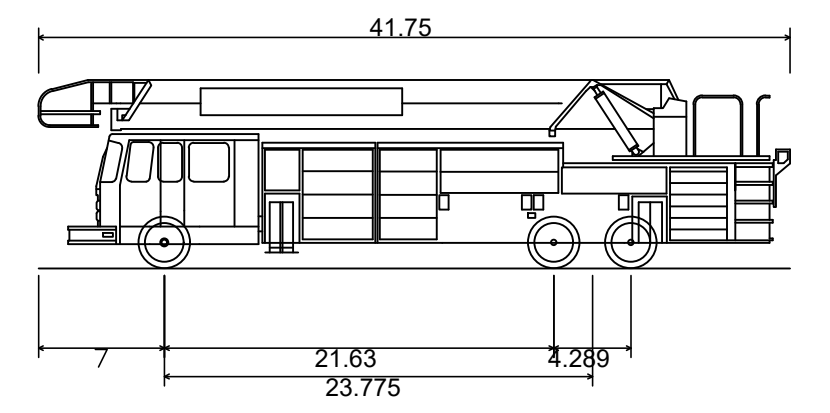
5	94	375	1216	1655
10	189	551	1719	2340
15	282	650	2106	2866
20	375	750	2431	3309
25	468	839	2718	3700
26	514	856	2772	3773
27	561	872	2825	3845
28	607	888	2877	3916
29	654	904	2928	3985
30	700	919	2978	4053
31	747	934	3027	4120
32	794	949	3075	4186
33	841	964	3123	4251
34	888	978	3170	4315
35	935	993	3216	4378
36	982	1007	3262	4440
37	1029	1021	3307	4501
38	1076	1034	3351	4561
39	1123	1048	3395	4621
40	1170	1061	3438	4680
41	1217	1074	3481	4738
42	1264	1087	3523	4796
43	1311	1100	3565	4852
44	1358	1113	3606	4908
45	1405	1126	3647	4964
46	1452	1138	3687	5019
47	1499	1150	3727	5073
48	1546	1163	3767	5127
49	1593	1175	3806	5180
50	1640	1186	3844	5232
55	1731	1244	4032	5488
60	1822	1300	4211	5732
65	1913	1353	4383	5966
70	2004	1404	4549	6191
75	2095	1453	4708	6408
80	2186	1501	4863	6618

Pressure gauge, Pitot orifice, Air-release cock, Gauge Attached to Hydrant or Pitot tube to Register Flowing Pressure, Pitot Tube, Gauge Attached to Hydrant or Pitot tube to Register Static and Residual Pressures, Public Main, Hydrant, Hydrant

FIRE FLOW TEST RESULTS

SCALE: N.T.S.

This item has been digitally signed & sealed by Aaron Stanton, P.E. on the date adjacent to the seal.
 Printed copies of this document are not considered signed & sealed and the signature must be verified on any electronic copies.



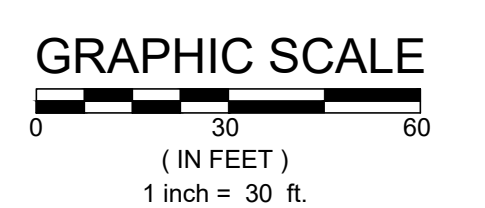
IRC Fire Truck
 Overall Length 41.750ft
 Overall Width 8.630ft
 Overall Body Height 10.46ft
 Min Body Ground Clearance 0.892ft
 Track Width 8.170ft
 Lock-to-lock time 6.00s
 Curb to Curb Turning Radius 35.000ft

TRUCK PROFILE

SCALE: N.T.S.

LEGEND

- PROPOSED ASPHALT
- PROPOSED HEAVY DUTY CONCRETE
- PROPOSED STANDARD DUTY CONCRETE
- PROPOSED POLE LIGHT



TRUCK TURN PLAN

SCALE: 1" = 30'

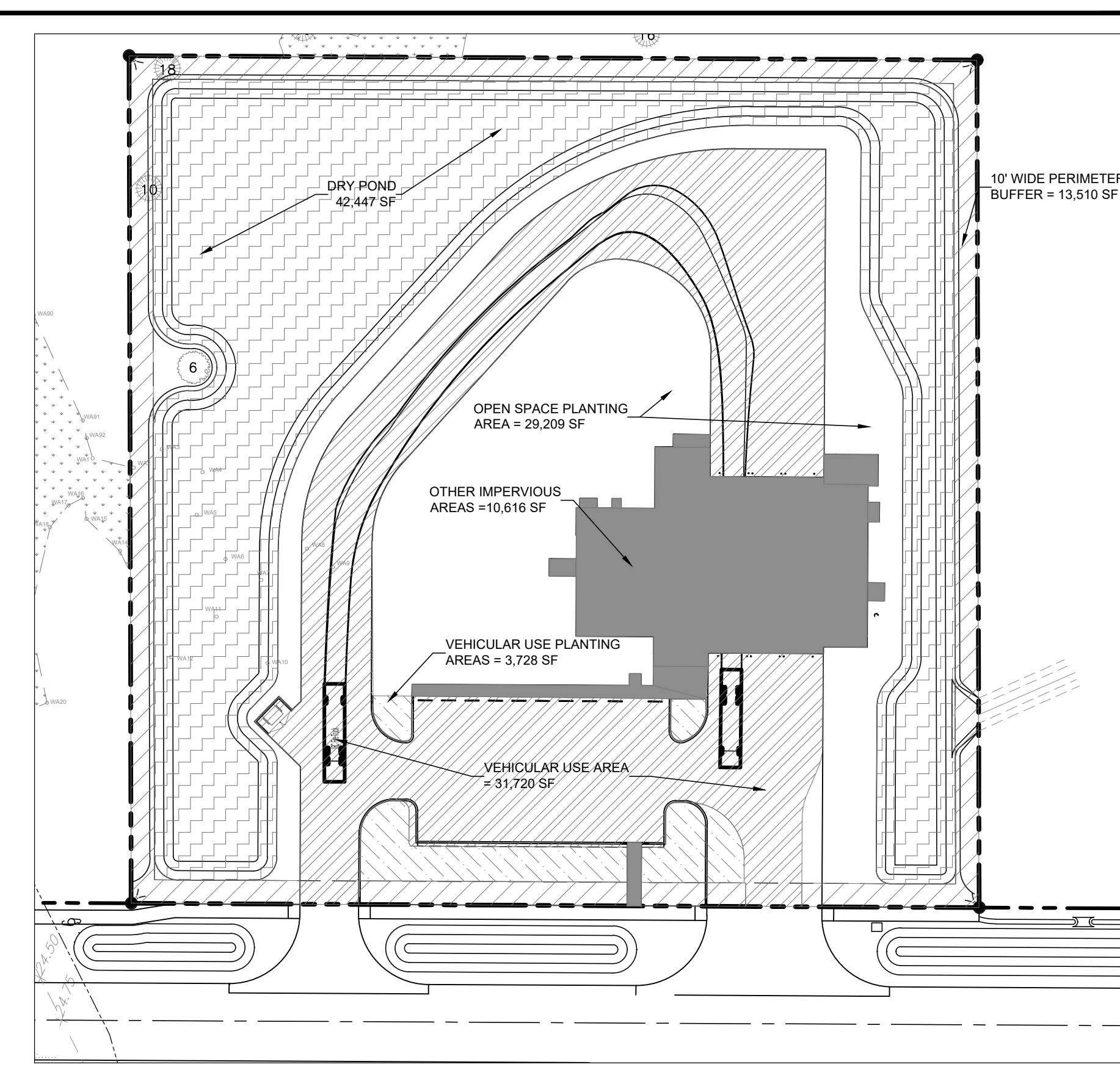
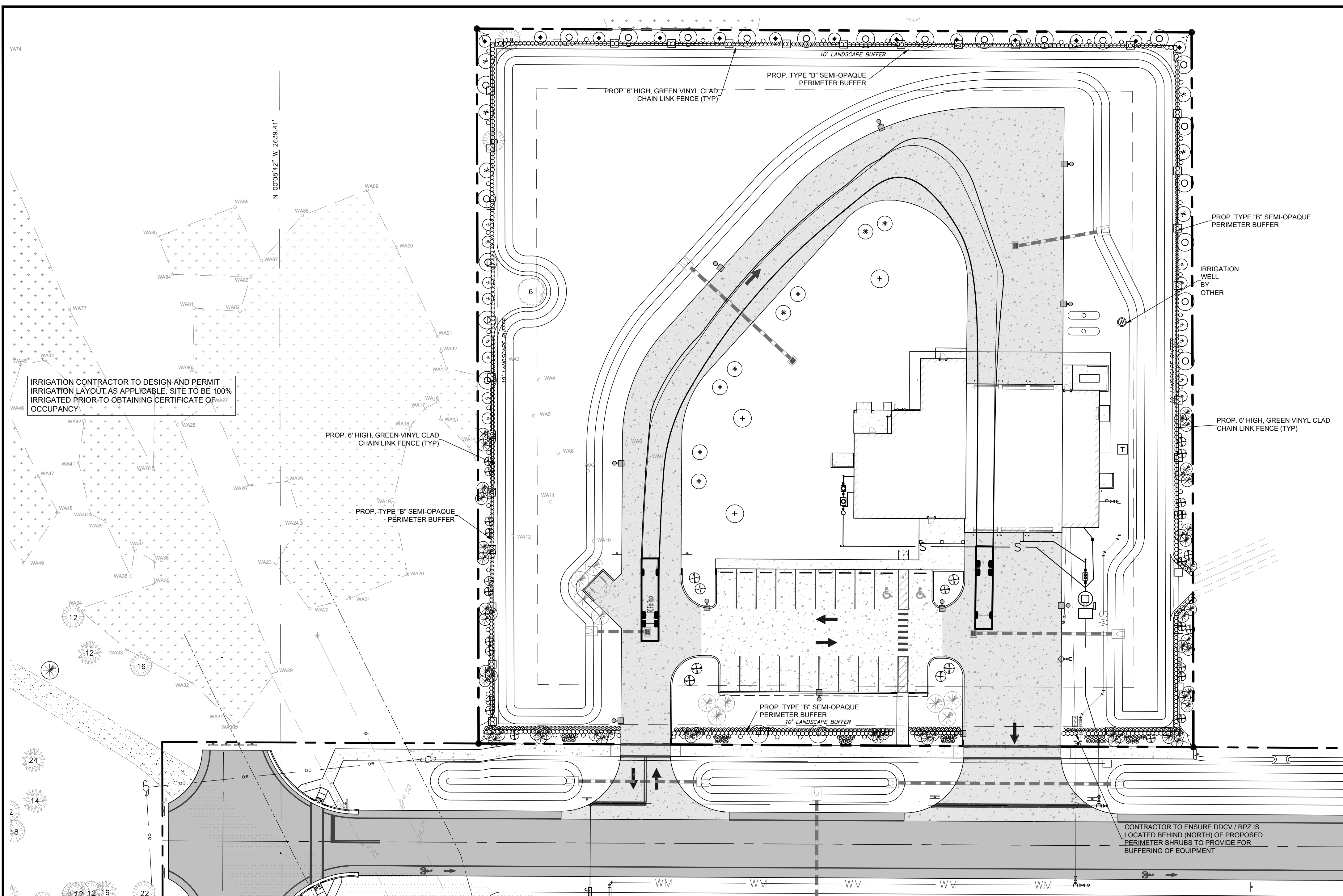


JOB NO.	21-0492	DATE	05/12/2023
DESIGNED	TH	CHECKED	AS
DRAWN	SS	DATE ISSUED	05/12/2023
DATE	JUNE 2022	REVISIONS	
CHECKED	AS	DATE	
DATE ISSUED	05/12/2023	DATE	

MBV ENGINEERING, INC.
 MOJA BOWLES VILLAMIZAR & ASSOCIATES
 CONSULTING ENGINEERING CA #3728
 185 S. 30TH STREET
 MELBOURNE, FL 32901
 TEL: (321) 944-8310
 FAX: (321) 944-8317
 WWW.MBV-ENG.COM

TRUCK TURN PLAN & FIRE FLOW TEST
IRC FIRE RESCUE FIRE STATION #7
CITY OF FELLSMERE
FINAL DEVELOPMENT PLAN

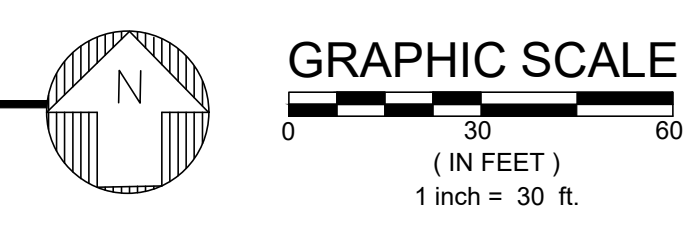
FLORIDA
 CITY OF FELLSMERE
 ARON G. STANTON
 LICENSE No. 72460
 STATE OF FLORIDA
 PROFESSIONAL ENGINEER
 ARON G. STANTON
 FL P.E. #72460
 SHEET
EX1
 21-0492



LANDSCAPE KEY MAP
SCALE: 1" = 50'

LANDSCAPE PLAN

SCALE: 1" = 30'



LEGEND

- SOUTHERN LIVE OAK
- LAUREL OAK
- CABBAGE PALM
- SAND/SCRUB LIVE OAK
- HOLLY DAHOON
- EAST PALATKA HOLLY
- JAPANESE PRIVET
- GRAPE MYRTLE
- EXISTING PINE TO REMAIN (2)
- EXISTING OAK TO REMAIN (1)
- EXISTING RELOCATED PALM (10)
- DWARF SCHEFFLERA
- WALTER'S VIBURNUM
- PAMPAS GRASS

LANDSCAPE CALCULATIONS			
1. Tree Requirements			
PERIMETER LANDSCAPE STRIP 10' WIDE BUFFER (EXCLUDING DRIVEWAY & ROAD RESERVATION)	CODE REQ.	QUANTITY	REQUIRED
CANOPY TREE	1 PER 30 LF	1,391 LF.	47 TREES
UNDERSTORY TREES	1 PER 25 LF	1,391 LF.	56 TREES
		TOTAL TREES REQUIRED =	103 TREES
		TOTAL TREES PROVIDED =	103 TREES
		(INCLUDES 3 REMAINING TREES)	
		TOTAL SHRUBS PROVIDED =	862 SHRUBS
OPEN SPACE			
REQUIRED TREES	1 TREE PER 4000 SF	29,209 SF.	7.30 TREES
		OPEN SPACE TREES REQUIRED =	8 TREES
		TOTAL TREES PROVIDED =	8 TREES
		(INCLUDES 4 RELOCATED PALMS or 1 TREE)	
INTERIOR VEHICULAR USE AREAS			
		TOTAL PAVED AREA =	31,728
		REQUIRED TREE AREA = 10% OF TOTAL PAVED AREA	
REQUIRED TREES	1 TREE PER 600 SF	3,173 SF.	5.29 TREES
		TOTAL TREES REQUIRED =	6 TREES
		TOTAL TREES PROVIDED =	6 TREES
		(INCLUDES 6 RELOCATED PALMS or 2 TREES)	
PROVIDED LANDSCAPE AREA AND TREES			
ABUTTING ROW (4,000 SF)			
1 OAK AND 2 PINES			
Trees to Remain =		3 TREES	
RELOCATED PALMS =		3 TREES	
TREE CREDIT =		6 TREES	
TOTAL REQUIRED TREES =		117 TREES	
TOTAL TREES NEEDED =		111 TREES	
PALM TREES (50% OF TOTAL TREES) =		56 TREES	

*LANDSCAPE AREA IS SEMI-OPAQUE, HEDGES AND FENCING ARE PRESUMED TO SURROUND PROPERTY PERIMETER.

MASTER LANDSCAPE MATERIAL SCHEDULE

CANOPY TREES									
SYM	QTY	BOTANICAL NAME	COMMON NAME	SIZE	HGT	OTHER	NATIVE	DROUGHT TOLERANCE	MISCELLANEOUS
OV	5	Quercus virginiana	SOUTHERN LIVE OAK	2.5" CAL	12'-0"	6"CT, SP	YES	HIGH	45 GAL
OL	22	Quercus laurifolia	LAUREL OAK	2.5" CAL	12'-0"	SP	YES	MODERATE	45 GAL
PALMS									
SS	57	Sabal palmetto	CABBAGE PALM		10'-18" CT	SLK,HC,SP	YES	HIGH	PLANT IN GROUPING OF 3 TO EQUAL 1 CANOPY
UNDERSTORY TREES									
QG	13	Quercus geminata	SAND/SCRUB LIVE OAK	2.0" CAL	6'-0"	3' CT, F, SP	YES	HIGH	45 GAL
IC	6	Ilex cassine	HOLLY DAHOON	2.0" CAL	6'-0"	STD, 4" CT, SP	YES	MODERATE	45 GAL
IA	8	Ilex x attenuata	"EAST PALATKA" HOLLY	2.0" CAL	6'-0"		YES	HIGH	
LJ	14	Ligustrum japonicum	JAPANESE PRIVET	2.0" CAL	6'-0"		NO	MODERATE	
CM	31	Lagerstroemia	GRAPE MYRTLE	2.0" CAL	6'-0"		NO	HIGH	
HEDGE/SHRUBS									
SA	684	Schefflera arboricola	DWARF SCHEFFLERA		3'-0"		NO	HIGH	
AC	142	Adoxaceae	WALTER'S VIBURNUM		3'-0"		YES	HIGH	
CS	36	Cortaderia selloana	PAMPAS GRASS		2'-0"		YES	HIGH	
GROUND COVER									
MULCH	TBD	"FLORIMULCH"	AS REQUIRED IN BEDS			Shredded, Grade B			MIN. 3" COVER
SOD	TBD	Stenotaphrum secundatum	Floritam Sod			100% Insect/Disease Free			

This item has been digitally signed & sealed by Aaron Stanton, P.E. on the date adjacent to the seal.
Printed copies of this document are not considered signed & sealed and the signature must be verified on any electronic copies.

ADDENDUM #6	DATE	REVISIONS	DATE
REV PER SWIRLY COMMENTS	08-14-2023		
REV PER SWIRLY COMMENTS	08-14-2023		
REV PER RIGOLD COMMENTS	08-07-2023		
REV PER RIGOLD COMMENTS	07-27-2023		
REV PER RIGOLD COMMENTS	07-19-2023		
REV PER RIGOLD COMMENTS	06-20-2023		
REV PER RIGOLD COMMENTS	06-20-2023		

MBV ENGINEERING, INC.
MOIA BOWLES VILLAMIZAR & ASSOCIATES
CONSULTING ENGINEERING CA #3728
1805 - 18TH STREET
MILWAUKEE, WI 53211
PH: (772) 644-8330
FX: (772) 784-8317

LANDSCAPE PLAN
IRC FIRE RESCUE FIRE STATION #7
CITY OF FELLSMERE
FINAL DEVELOPMENT PLAN
FLORIDA
CITY OF FELLSMERE

AARON G. STANTON
LICENSE
No. 72460
STATE OF FLORIDA
PROFESSIONAL ENGINEER
AARON G. STANTON
FL, P.E. #72460
SHEET
C19
21-0492

72 HOURS BEFORE DIGGING
CALL TOLL FREE
811
Know what's below.
Call before you dig.