

**GROUNDWATER ELEVATION DATA
DESOTO CITY LANDFILL
SEPTEMBER 2022**

WELL NAME	TOP OF CASING (NGVD,FT)	CONTOUR MAP			TIME OF SAMPLING		
		MAP DATE	DEPTH TO WATER (FT)	GROUNDWATER ELEVATION (NGVD,FT)	SAMPLE DATE	DEPTH TO WATER (FT)	GROUNDWATER ELEVATION (NGVD,FT)
MW-6SR	140.66	10/5/2022	68.13	72.53	10/5/2022	68.13	72.53
MW-9S	147.16	10/5/2022	75.71	71.45	10/5/2022	75.71	71.45
MW-10S	146.13	10/5/2022	71.88	74.25	10/5/2022	71.88	74.25
MW-11S	149.86	10/5/2022	77.12	72.74	10/5/2022	77.12	72.74
MW-12S	106.87	10/5/2022	31.80	75.07	10/5/2022	31.80	75.07
MW-12S DUP	106.87	10/5/2022	31.80	75.07	10/5/2022	31.80	75.07
MW-13SR	120.99	10/5/2022	46.98	74.01	10/5/2022	46.98	74.01
MW-14S	133.66	10/5/2022	60.08	73.58	10/5/2022	60.08	73.58
MW-15S	138.34	10/5/2022	65.60	72.74	10/5/2022	65.60	72.74

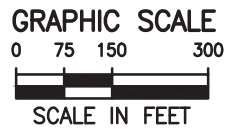
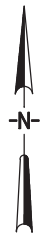
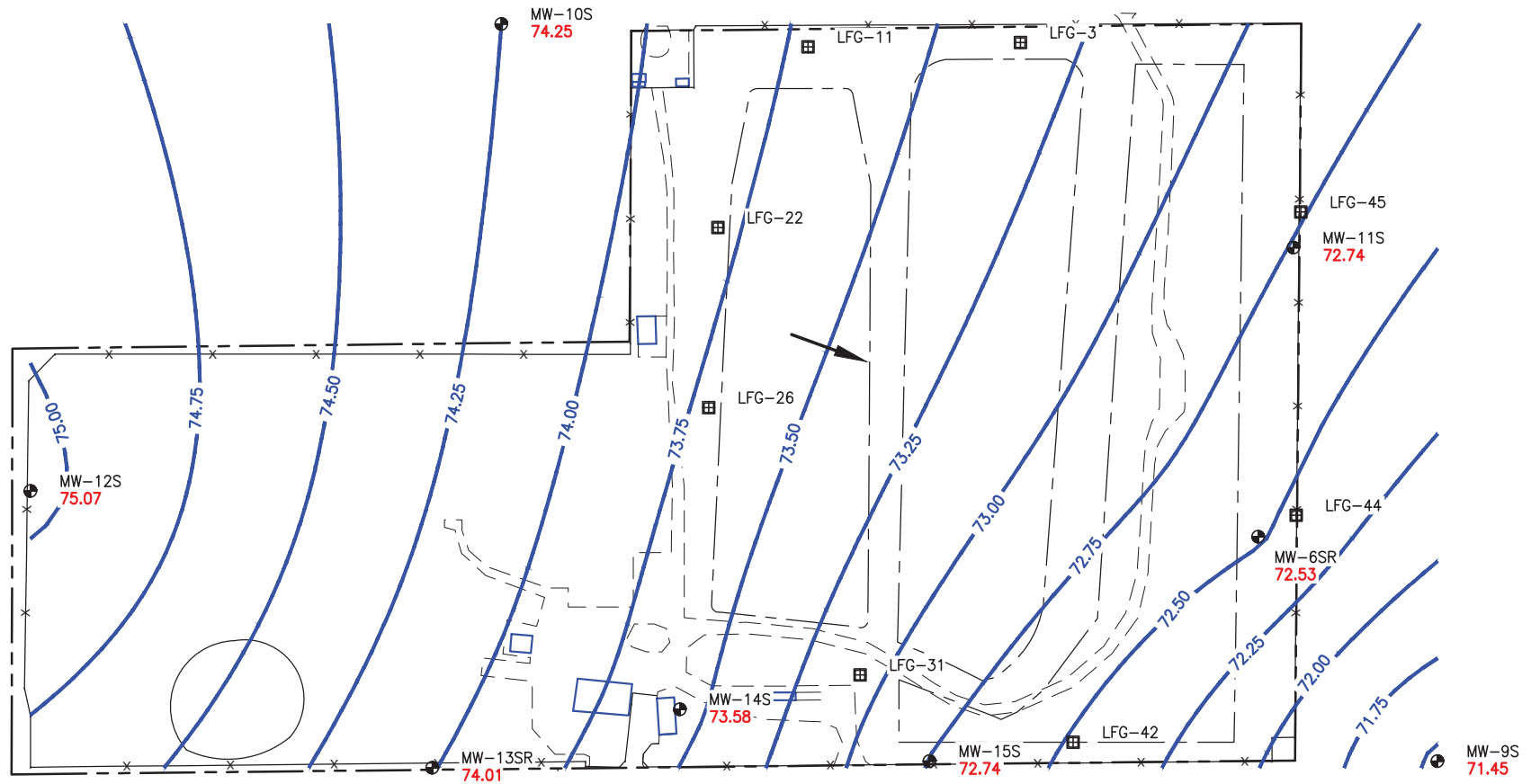
NGVD - National Geodetic Vertical Datum

NAVD - North American Vertical Datum

NS - Not Sampled

NM - Not Measured or Dry; refer to letter for details

NA - Not Available



GROUNDWATER CONTOUR MAP
DESOTO CITY LANDFILL
HIGHLANDS COUNTY, FLORIDA
OCTOBER 5, 2022

LEGEND

- MW-9S 71.45 GROUNDWATER MONITOR WELL
GROUNDWATER ELEVATION
- 75.00 GROUNDWATER CONTOUR
CONTOUR INTERVAL 0.25 FOOT
- GROUNDWATER FLOW DIRECTION

NOTE: ALL ELEVATIONS ARE IN NAVD