



ADDENDUM NO. 1

Date: 12 March 2020

Project No.: 1922

Project Name: Southbend Toilets

The Bidding Documents are modified as follows:

PART 1.00 DRAWINGS

1.01 SHEET SD-3:

- A. Relocation of building as shown.

PART 2.00 PROJECT MANUAL

NO ITEMS INCLUDED

PART 3.00 ADDENDA

NO ITEMS INCLUDED

PART 4.00 APPROVED MANUFACTURERS

NO ITEMS INCLUDED

PART 5.00 ATTACHMENTS

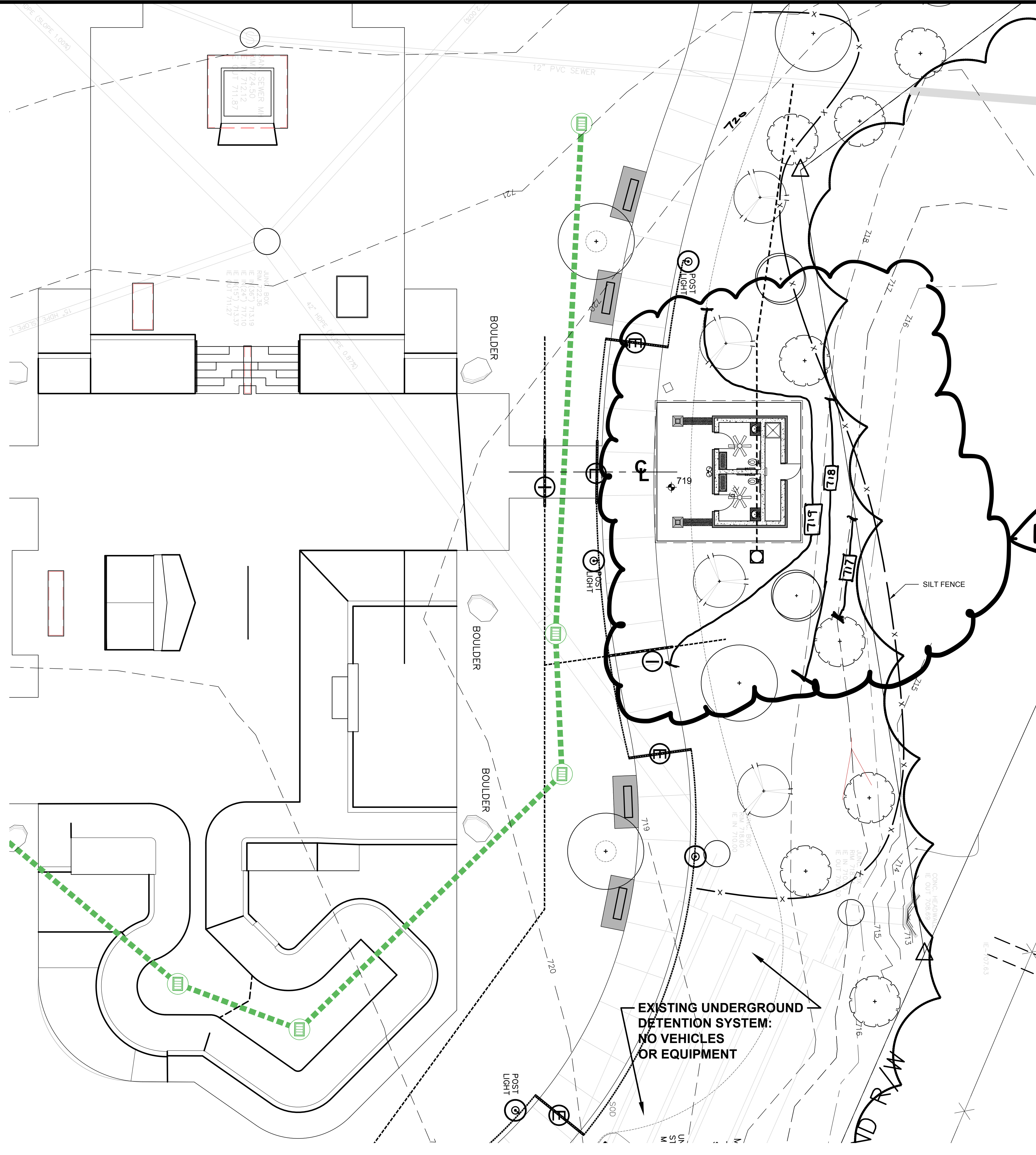
5.01 SHEET ADD1-1A

- A. See attached Sheet ADD-1A attached here to.

PART 6.00 GENERAL CLARIFICATIONS

NO ITEMS INCLUDED

END OF ADDENDUM NO. 1



LEGEND

- - - 719 - - -	EXISTING CONTOUR
- 719 -	NEW CONTOUR
- X -	SILT FENCE: SEE 'C' AND 'D' ON SHEET SD-7

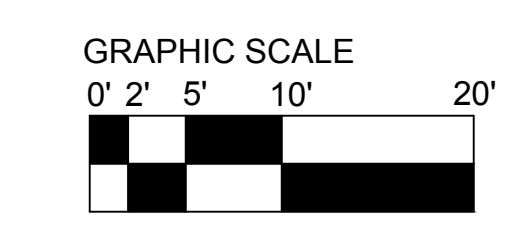
SITE CONSTRAINTS

DUE TO EXISTING SITE CONDITIONS CONTRACTOR IS TO INCLUDE THE COST OF CONCRETE PUMP TRUCK, AND A GROUND PIPE OF APPROX. 250'-0" TO POUR CONCRETE FOR TOILET CONSTRUCTION.

REVISED LOCATION OF TOILETS G.C. TO HAUL IN COMPACTED BACK FILL.

EXISTING UNDERGROUND DETENTION SYSTEM: NO VEHICLES OR EQUIPMENT

1 PARTIAL SITE PLAN - PROPOSED
SD-3 Scale: 1" = 10'-0"



SMITH DESIGN GROUP, INC.
206 WEST HARALSON STREET
LAGRANGE, GEORGIA 30240
706-882-5511
www.SDGarch.net

REVISED 12 MARCH 2020 ADDENDUM NO. 1

REVISIONS	
DATE	DESCRIPTION

PROJECT:
**TOILET FACILITIES
SOUTHBEND PARK**
PIERCE STREET
LAGRANGE, GEORGIA

TITLE:
PARTIAL SITE PLAN

MODIFIED DATE:	JOB NO: 1922
ISSUED DATE: FOR PERMIT & BIDDING 14 FEB 2020	SHEET: SD-3