



Hampton, Lenzini and Renwick, Inc.

Civil Engineers • Structural Engineers • Land Surveyors • Environmental Specialists
www.hltreengineering.com

December 16, 2019

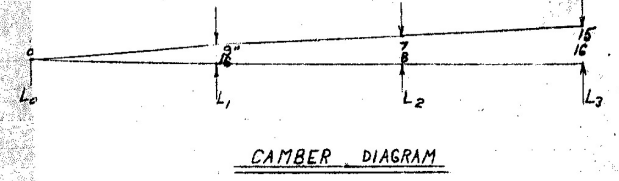
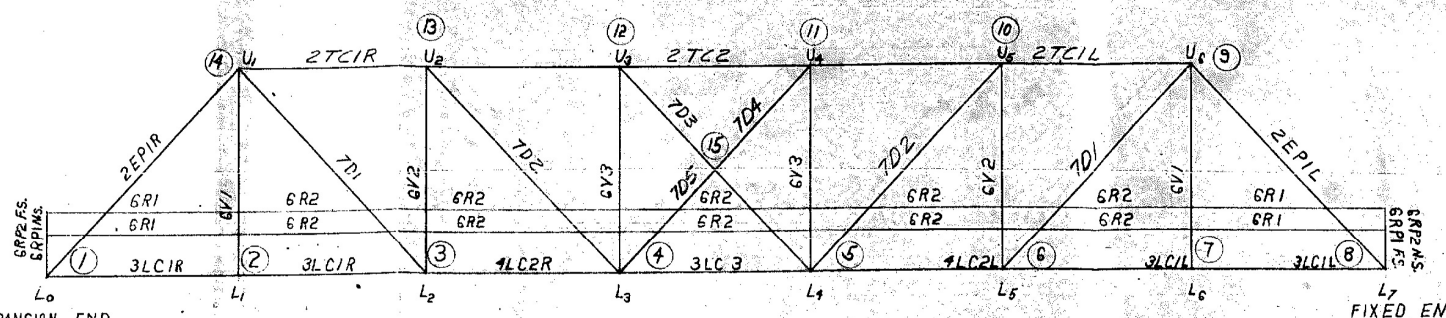
Addendum No. 2

Project: Kendall County Forest Preserve District
Millbrook Bridge Removal Project
#20-01-001

To: All Plan Holders

Existing plans of the west truss span, which was constructed in 1957, are attached (8 sheets).
The center and east truss spans are of a different design and plans are not available.

SYMMETRICAL ABOUT C



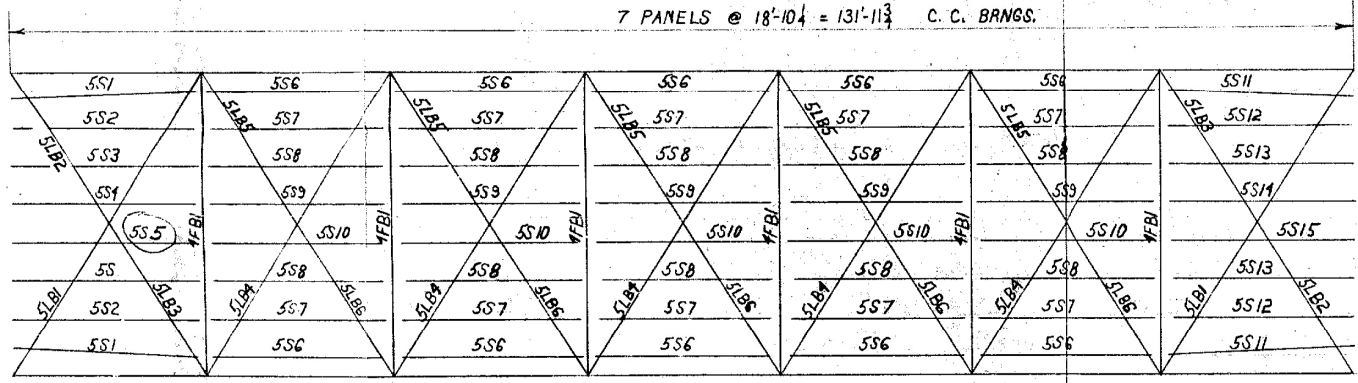
- EXPANSION END
 1-STRINGER BEARING SYSTEM sheet-1
 2-1P1
 2-1ES1
 2-1BP1
 2-1LP1
 4-1AB1
 1-5ED1
 2-2LH1

- FIXED END
 1-STRINGER BEARING SYSTEM sheet-1
 2-1P1
 2-1FS1
 2-1LP1
 8-1A2
 8-1W1
 2-2LH1

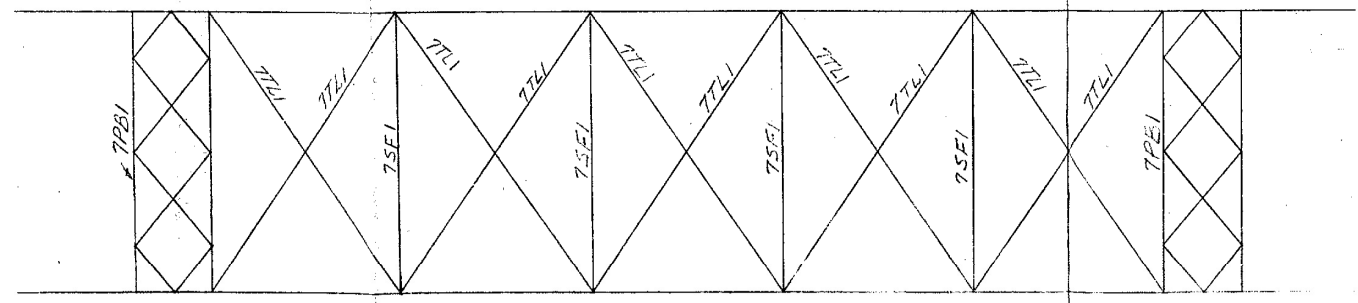
NORTH HALF OF TRUSS AS SEEN FROM ROADWAY

GENERAL NOTES
 ALL SHOP RIVETED CONNECTIONS, EXCLUDING SPLICE JOINTS, SHALL BE PUNCHED FULL SIZE.
 THE TRUSS SHALL BE ASSEMBLED ACCORDING TO THE CAMBER DIAGRAM WITH EACH SIDE FLAT AND REAMED WHILE IN THAT POSITION.
 INSPECTION BY THE STATE OF ILLINOIS.

REAMING NOTES
 ALL JOINTS THAT HAVE MAIN MEMBERS SUCH AS LOWER CHORDS, VERTICALS AND DIAGONALS SHALL BE SUBPUNCHED AND REAMED. 2" RIVET HOLES SHALL BE SUBPUNCHED TO 1 1/8" & REAMED TO 1 1/8" WHILE THE TRUSS IS ASSEMBLED TO THE PROPER CAMBER. 3/4" RIVET HOLES SHALL BE PUNCHED TO 1/2" & SPEAR REAMED TO 1/2" WHILE THE TRUSS IS ASSEMBLED TO THE PROPER CAMBER.
 SHOP RIVETED CONNECTIONS FOR JOINTS, AS MENTIONED ABOVE, SHALL BE SUBPUNCHED & REAMED TO SIZE WHILE THE TRUSS IS ASSEMBLED. BEFORE TRUSS IS DISASSEMBLED BOLTS SHALL BE PLACED IN 50% OF THE HOLES TO BE SHOP RIVETED & TIGHTENED; PINS SHALL BE PLACED IN 50% OF THE REMAINING HOLES. BOLTS & PINS SHALL BE REMOVED ONE AT A TIME AS THE CONNECTION IS SHOP RIVETED.
 ALL HOLES NOT MENTIONED ABOVE MAY BE PUNCHED FULL SIZE. RIVETS SHALL BE 3/4" IN THE FLANGES OF ALL CHANNELS AND IN THE 2" LEGS OF ALL ANGLES. ALL OTHER RIVETS SHALL BE 7/8".



FLOOR SYSTEM



TOP BRACING SYSTEM

FILE COPY
 FOX RIVER BRIDGE
 MILLBROOK
 KENDALL COUNTY

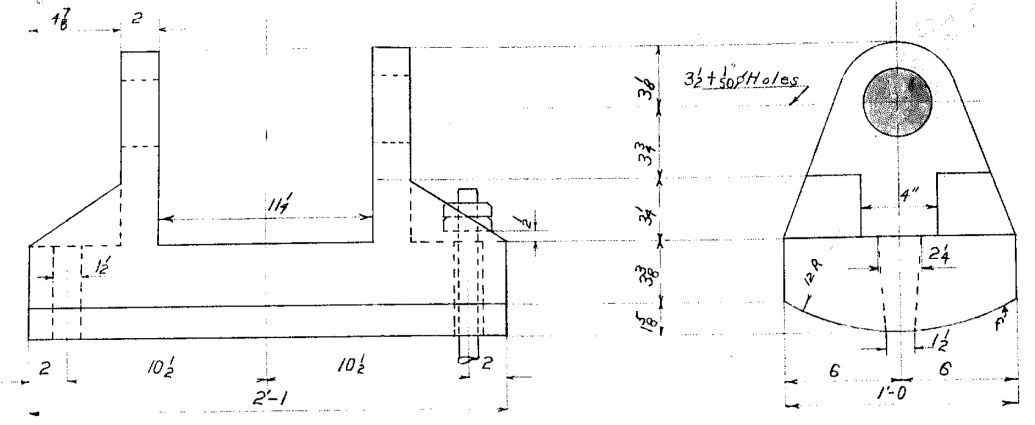
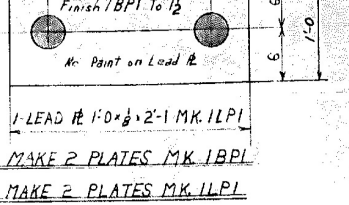
APPROVED
 NOV 8 1955
 J. M. Romine
 Engineer of Bridge & Traffic Structures

Fox River Bridge Repair near Millbrook
 Kendall County

REVISED		THEY ALL DATE EARLY DATE		PRINT RECORD	
DATE	REVISION	SYM	DATE	NO	TO

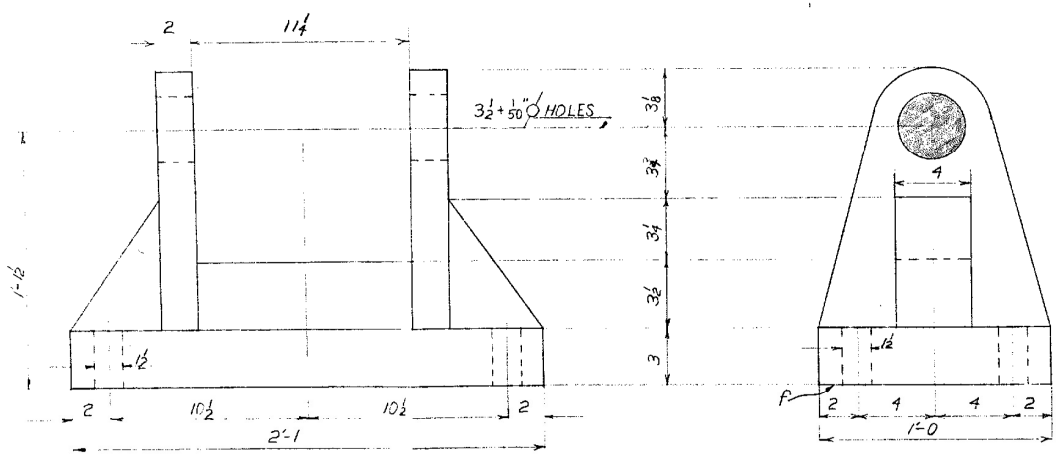
BENNETT INDUSTRIES, INC.
 PEOTONE, ILL.
 MATERIAL FOR: ERECTION DIAGRAM
 LOCATION: KENDALL COUNTY
 CUSTOMER: Joliet, Berks & Const. Co.
 MADE BY D.S.S. CHECKED BY:
 CONTRACT NO. 2370

FURNISH 4 PINS WITH NUTS MK. IPI

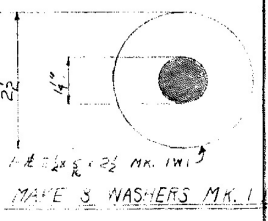
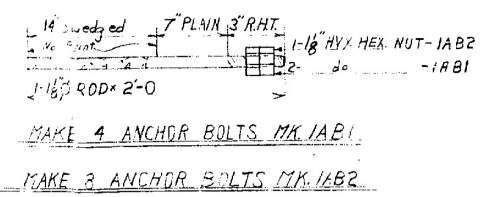
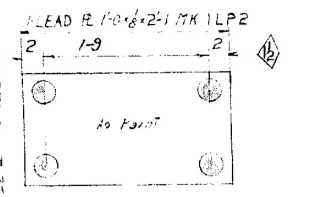


NOTE:
An anti-rust compound shall be applied to pins & pin holes.

FURNISH 2 CAST IRON SHOES MK. IESI



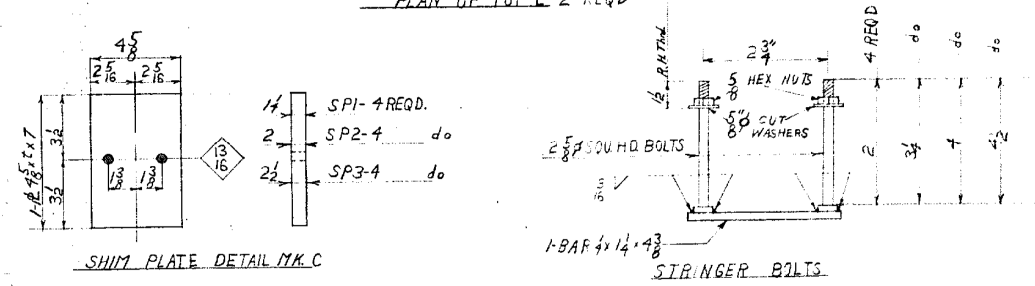
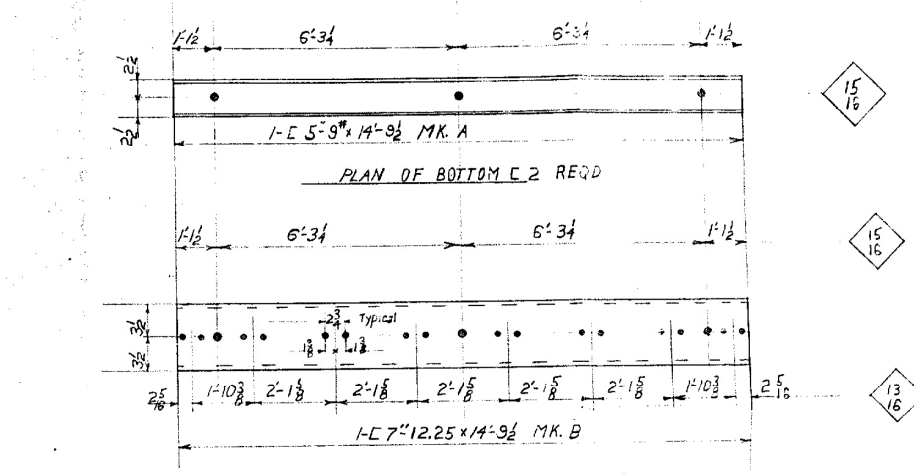
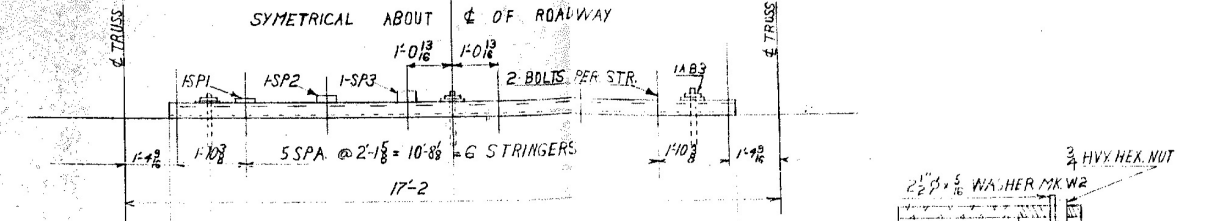
FURNISH 2 CAST IRON SHOES MK. IFSI



MAKE 4 PLATES MK. ILP2

MAKE 4 ANCHOR BOLTS MK. IAB1
MAKE 3 ANCHOR BOLTS MK. IAB2

MAKE 3 WASHERS MK. IWI
MAKE 3 ANCHOR BOLTS MK. IAB3



ABUTMENT & PIER STRINGER BEARING SYSTEM

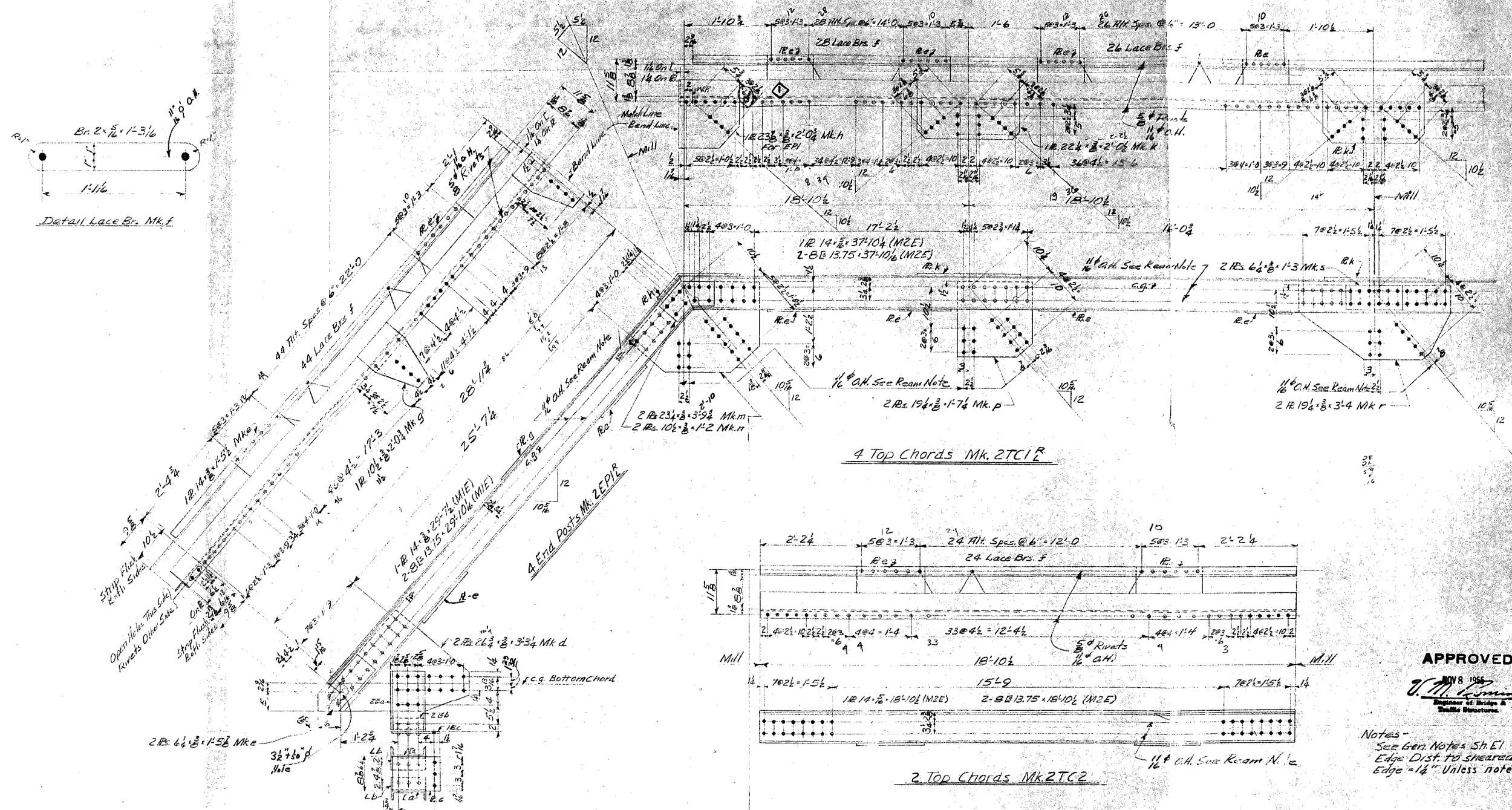
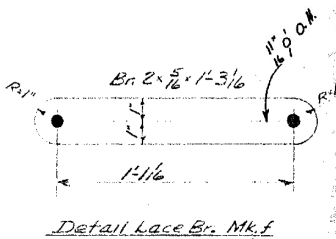
MAKE 6 ANCHOR BOLTS MK. IAB3

APPROVED
NOV 8 1955
J. M. Romine
Engineer of Bridge & Traffic Structures

NO.	DESCRIPTION	DATE	BY

NO.	DESCRIPTION	DATE	BY

CENNETT INDUSTRIES, INC.
PEOFTONE, ILL.
STRUCTURAL STEEL
KENDALL COUNTY
Joliet Bridge Const. Co.
D.S.G. 8-1855
NONE
ILL. SPEC. 2370
PAGE 1 OF 7



APPROVED

NOV 8 1955

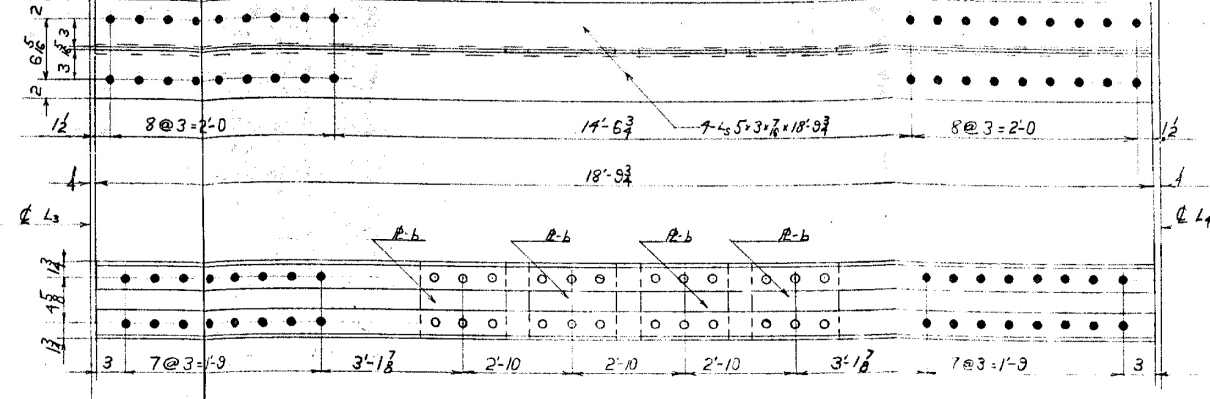
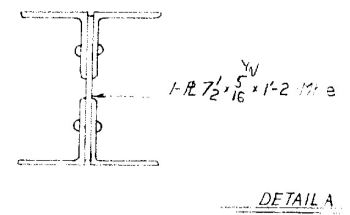
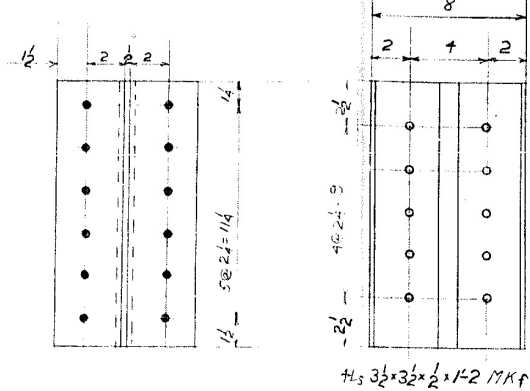
 J. M. Bennett
 Designer of Bridge & Traffic Structures

Notes -
 See Gen. Notes Sh. E1
 Edge Dist. to sheared edge = 1 1/2" Unless noted.

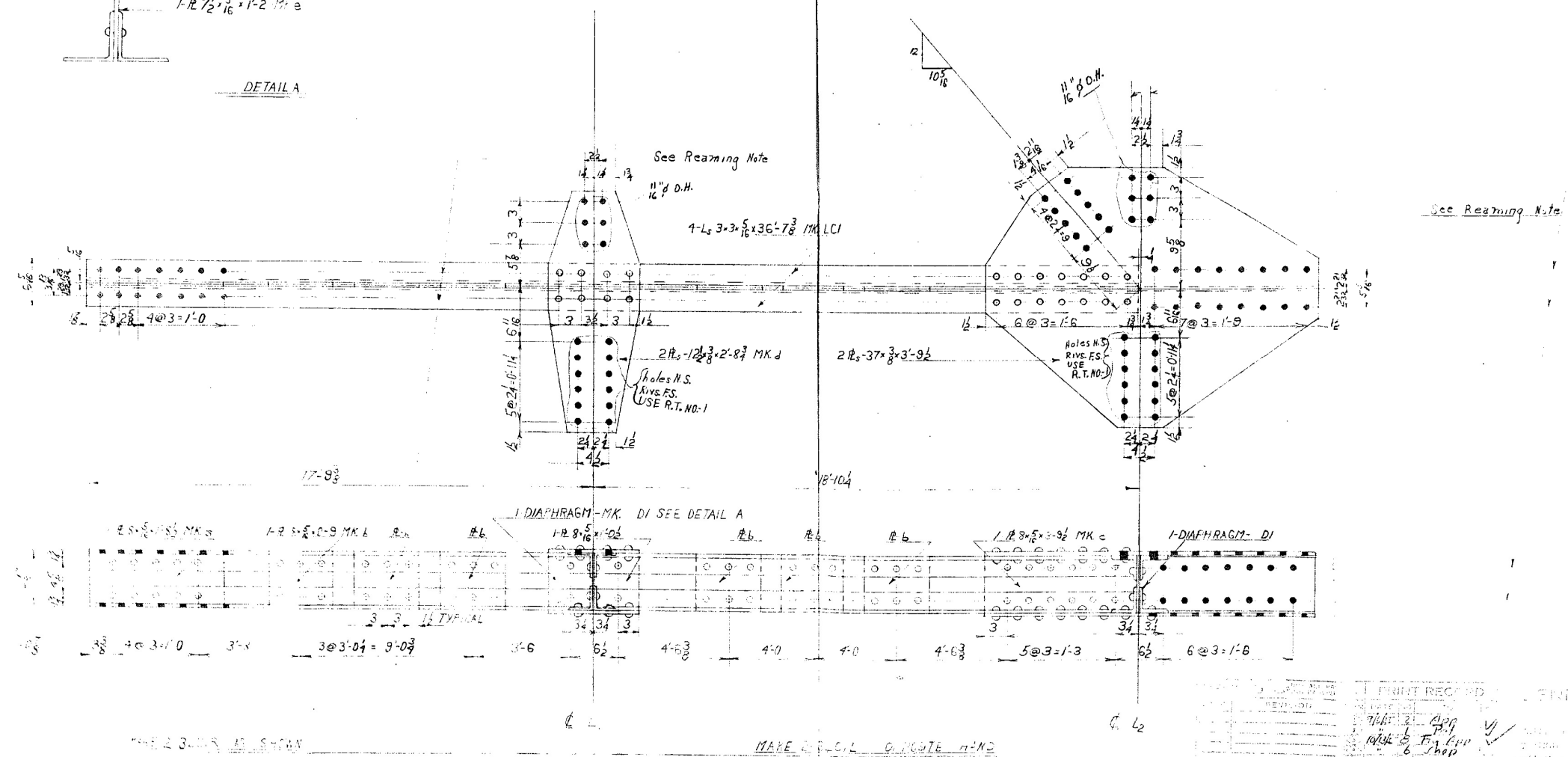
REVISED		DATE ALL REVISIONS MADE		PRINT RECORD	
DATE	REVISION	SYM	DATE	NO	TO
10-22-55	REV		9/16/55	2	App
			10/15/55	3	Eng. App
			10-27-55	6	Shop
				6	Shop

BENNETT INDUSTRIES, INC.
 PEOTONE, ILL.

MATERIAL FOR: Structural Steel
 LOCATION: Kendall County
 CUSTOMER: Joliet Bridge & Concrete
 MADE BY: J. M. Bennett
 RIVETS: 5/16" DIA. 1/2" H.M. WELD. A.H.S.
 PAINT: F11, Spaced
 CONTRACT NO. 2-270 DRAWING NO. 2 of 7



MAKE 2-LOWER CHORDS AS SHOWN MK. 3LC3

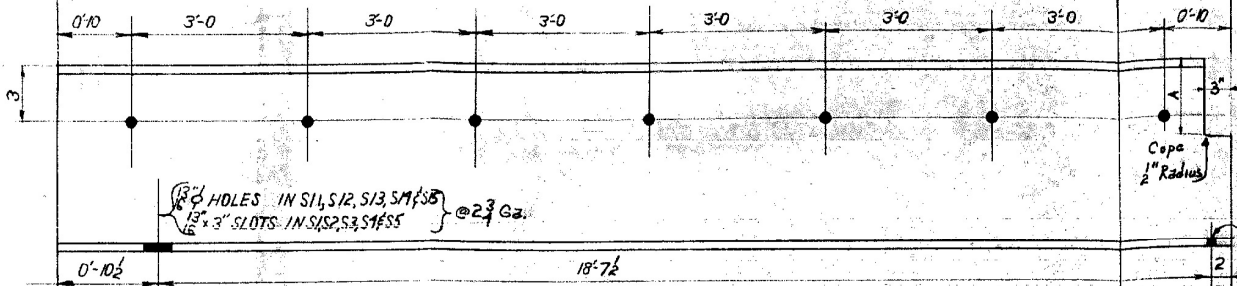


APPROVED
NOV 8 1955
J.M. Romine
Engineer of Bridge & Traffic Structures

PRINT RECORD

NO.	REV.	DATE	BY	CHK.
1				
2				
3				
4				
5				
6				

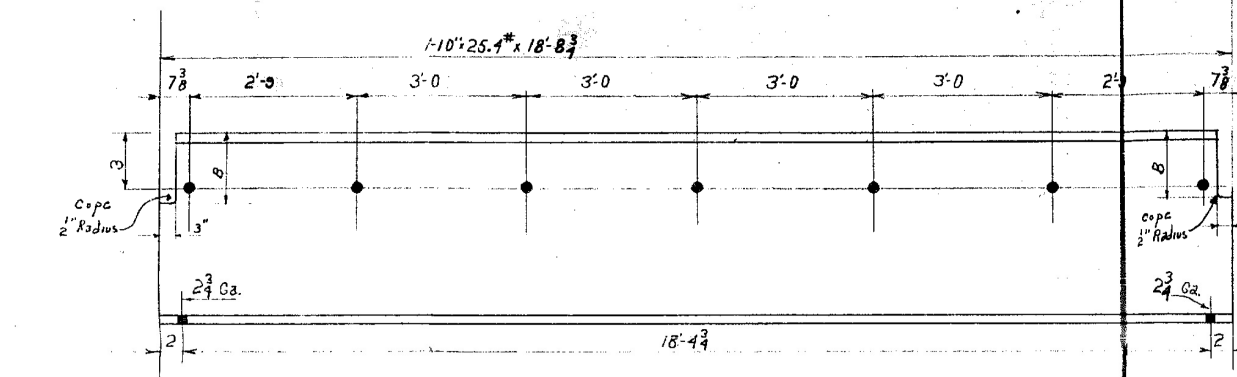
FRONTIER INDUSTRIES, INC.
STRUCTURAL STEEL
PENNSYLVANIA COUNTY
John Beatty & Co. Inc.
UN. 11/10/55
ILL. SPECS. 13/16 WITH MKS.
2370 SHEET NO. 3 of 7



Dimension 'A'

Stringer S1	17
S2	17
S3	17
S4	17
S5	17

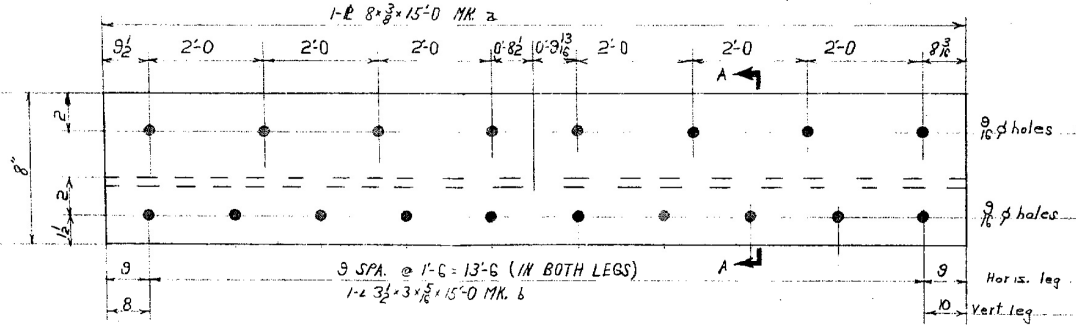
- MAKE 1 STRINGER MK SS7 as noted
- MAKE 2 STRINGERS MK SS1 as noted MAKE 1 STRINGER MK SS8 do
- MAKE 2 STRINGERS MK SS2 do MAKE 2 STRINGERS MK SS9 do
- MAKE 2 STRINGERS MK SS3 do MAKE 1 STRINGER MK SS4 do
- MAKE 2 STRINGERS MK SS7 do MAKE 2 STRINGERS MK SS12 do
- MAKE 1 STRINGER MK SS5 do



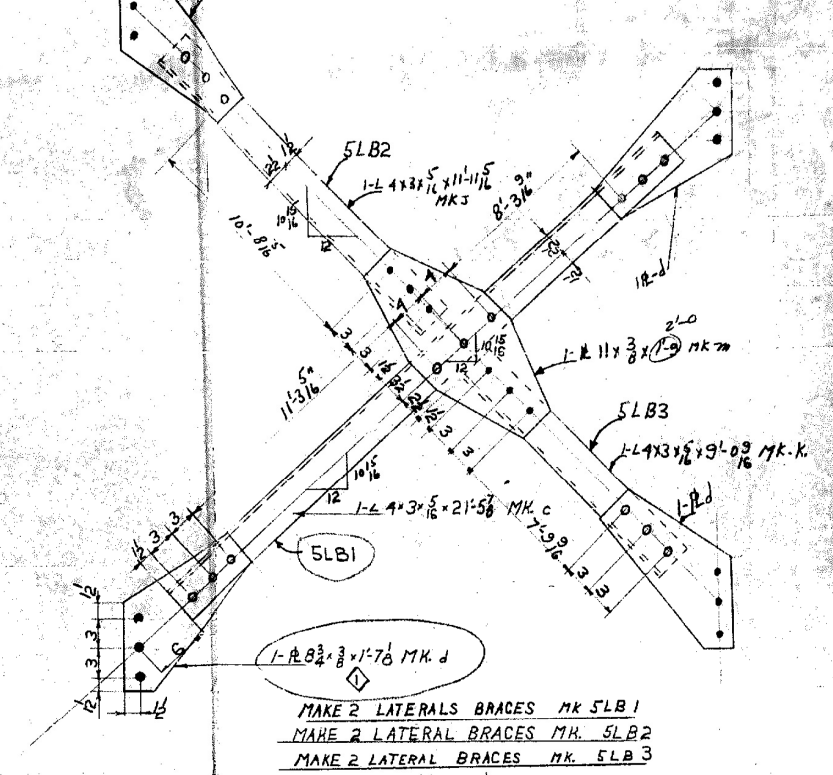
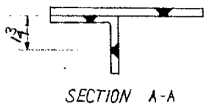
Dimension 'B'

Stringer S6	17
S7	17
S8	17
S9	17
S10	17

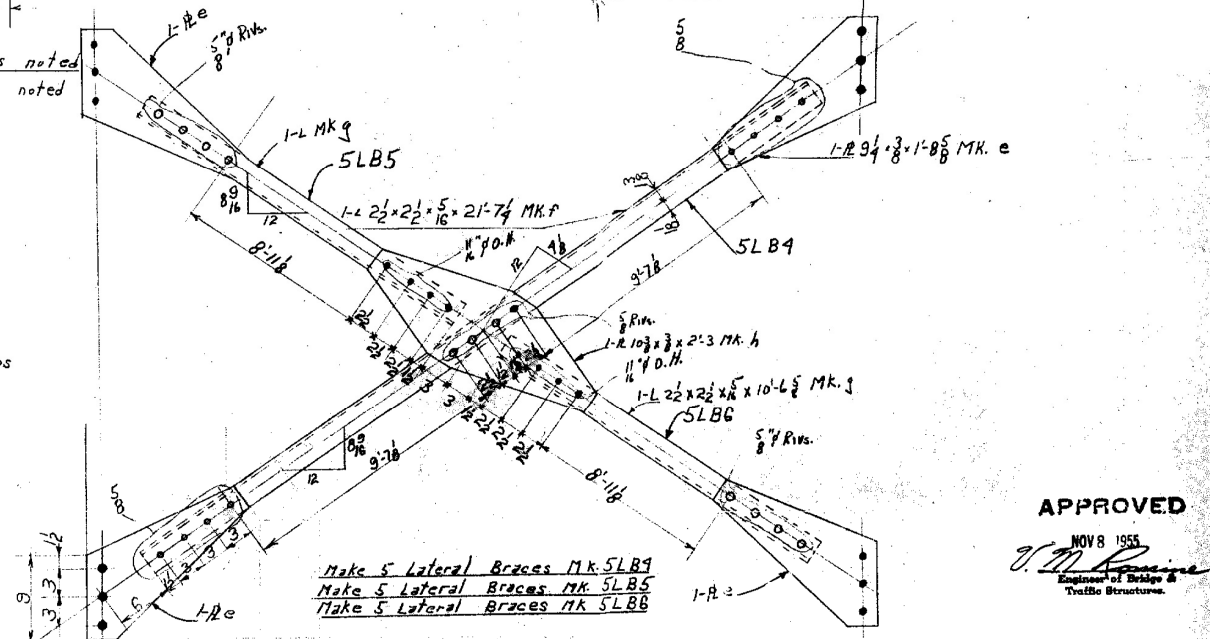
- MAKE 10 STRINGERS MK SS6 as noted
- MAKE 10 STRINGERS MK SS7 do
- MAKE 5 STRINGERS MK SS10 as noted
- MAKE 10 STRINGERS MK SS8 as noted
- MAKE 5 STRINGERS MK SS9 as noted



MAKE ONE EXPANSION DEVICE MK SED1



- MAKE 2 LATERAL BRACES MK 5LB1
- MAKE 2 LATERAL BRACES MK 5LB2
- MAKE 2 LATERAL BRACES MK 5LB3



- Make 5 Lateral Braces MK 5LB7
- Make 5 Lateral Braces MK 5LB5
- Make 5 Lateral Braces MK 5LB6

APPROVED

NOV 8 1955

V.M. Rasmussen

Engineer of Bridge & Traffic Structures

NO.	REVISION	DATE	BY	TO
1	REV 12 MK. d	9/16/55	A.P.H.	
2		10/15/55	F.L.A.P.	
3		11/1/55	J.H.S.	
4		11/1/55	D.S.P.	
5		11/1/55	S.W.P.	

BENNETT INDUSTRIES, INC.

PEOTONE, ILL.

MATERIAL FOR STRUCTURAL STEEL

LOCATION MENDALL COUNTY

CUSTOMER Joliet Bridge & Structures

DESIGNED BY D.S.S. 2-24-55

CHECKED BY J.H.S.

DATE 11/1/55

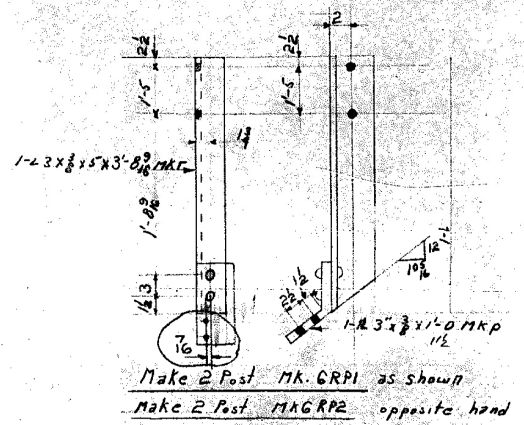
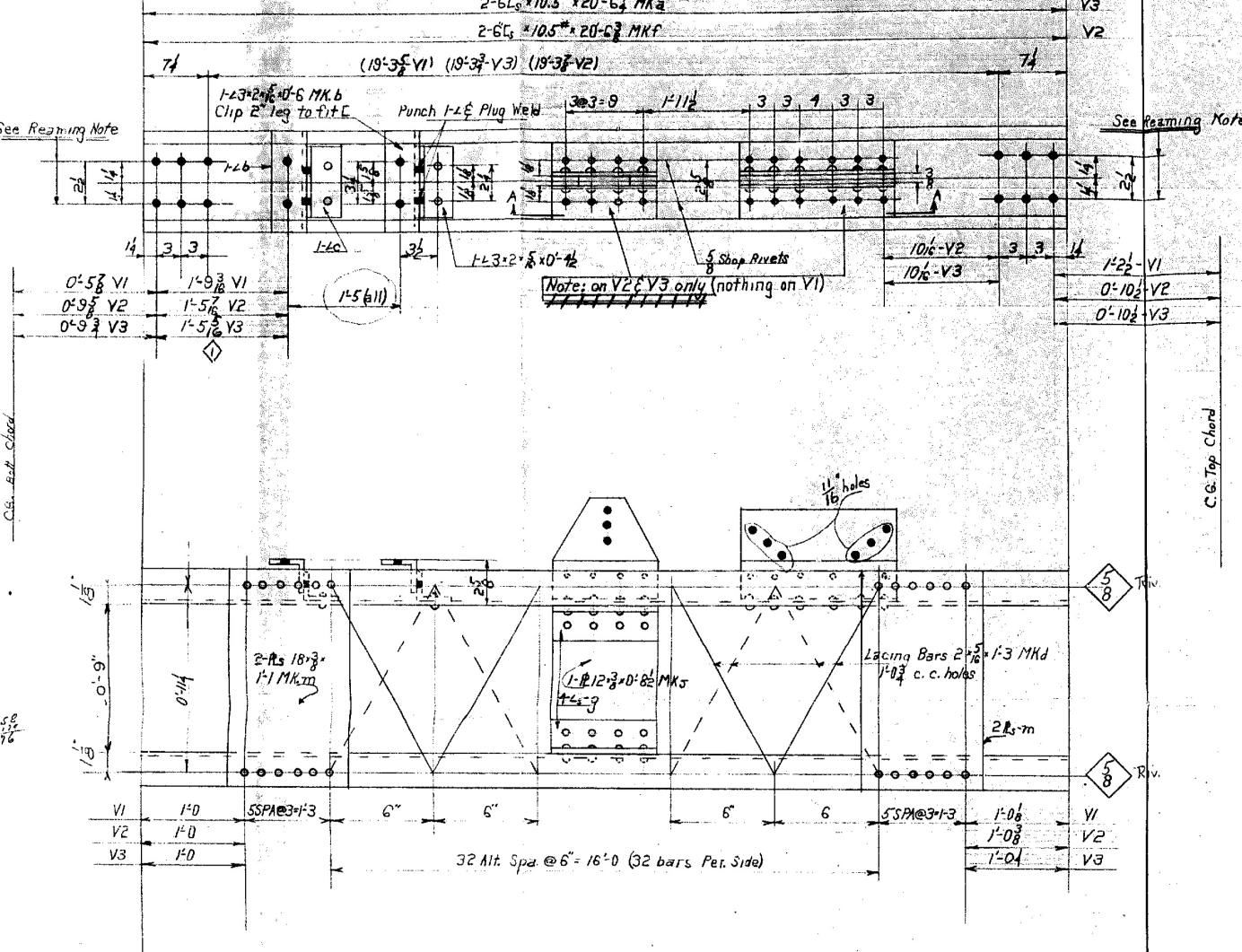
WELD. A.W.S.

ILL. SPECS.

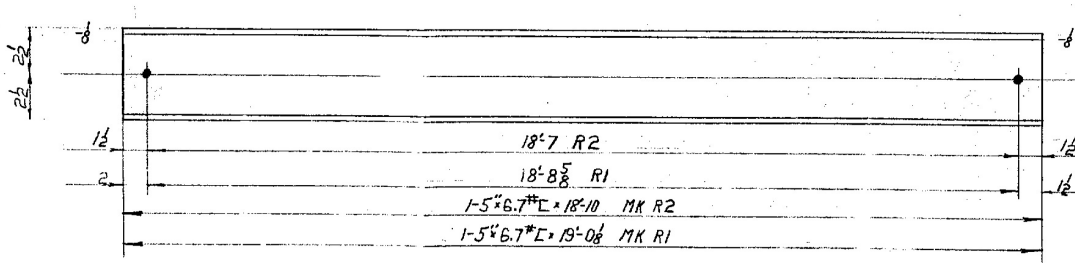
2370

Field Rivet & Bolt List

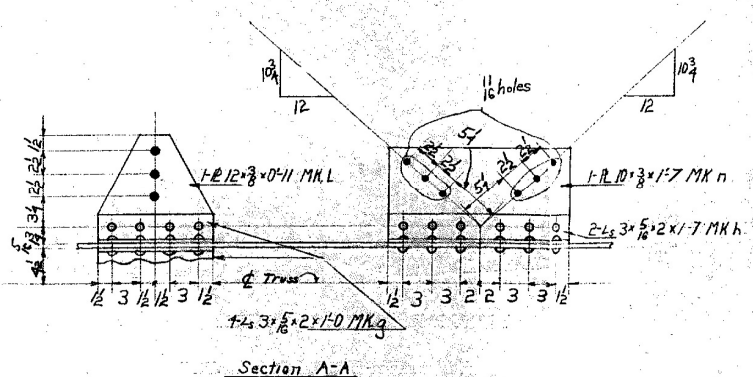
Kind	Reqd	Furnish	Grip	Length	Head	Dia.	Location
Rivet	144	160	1 1/2	2 3/4	button	3/4	1-27
Rivet	184	212	1	2 3/4	button	3/4	1-27
Rivet	916	1018	3/4	2 3/4	button	3/4	1-27
Rivet	56	72	1 1/2	2 3/4	button	3/4	1-27
Rivet	5	15	1	2 3/4	button	3/4	1-27
Rivet	528	591	3/4	2 3/4	button	3/4	1-27
Bolt	192	207	2"	Hex	Hex Nut	3/4	1-37
Bolt	147	159	2"	Hex	Hex Nut	3/4	1-42
Bolt	28	100	1 1/2"	Hex	Hex Nut	3/4	1-74
Bolt	58	84	1 1/2"	Hex	Hex Nut	3/4	1-33
Bolt	20	25	3/8"	C.S.	Hex N.	1/2	1-22
~	7	10	6"	C.S.	Hex N.	1/2	1-22
~	1	2	12"	C.S.	Hex N.	1/2	1-22
Wash	100	100	1/4"	1/4"			1-19
Wash	932	932	1/4"	1/4"			1-102



Make 4 Verticals MK6V1 as noted Make 4 Verticals MK6V2 as noted Make 4 Verticals MK6V3 as noted



Make 8 Rails as noted MK6R1 Make 20 Rails as noted MK6R2



Section A-A

APPROVED

V.M. Bennett
 Engineer of Bridge &
 Traffic Structures

BENNETT INDUSTRIES, INC.
 PEOTONE, ILL.

MATH. FOR STRUCTURAL STEEL
 LOCATION: KENDALL COUNTY
 CUSTOMER: Joliet Bridge & Const. Co.
 MADE BY: UN. HOLES: UN. WELD: H.W.S.
 PAINT: ILL. Specs.
 CONTRACT No. 2370 SHEET No. 6 of 7

DATE	REVISION	BY	DATE	TO	APP
10-22-51	1-5% was 1-5.3		9-25-52	APP	
	REV				

