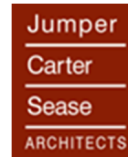


ADDENDUM #02

EMERALD HIGH SCHOOL ADDITIONS &
RENOVATIONS
GREENWOOD SCHOOL DISTRICT 50
JCS PROJECT NO: 22016



APRIL 25, 2023

This addendum modifies the Contract Documents only in the manner and to the extent stated herein and shown on any accompanying drawings and will become a part of the Contract Documents. Except as specified or otherwise indicated by this addendum, all work shall be in accordance with the basic requirements of the Contract Documents.

SPECIFICATIONS:

Note: Replace the following specification sections or paragraphs with the updated specification sections or paragraphs included in this addendum or add new specifications sections or paragraphs included in this addendum.

| SECTION | SECTION TITLE | DESCRIPTION |
|----------|--|--|
| 07 54 19 | PVC & SBS HYBRID MEMBRANE ROOFING SYSTEM | Add specification section 07 54 19 "PVC & SBS Hybrid Membrane Roofing System" included in this addendum. |

DRAWINGS:

Note: Replace the following sheets with the updated sheets included in this addendum or add new sheets included in this addendum.

| SHEET | SHEET NAME | DESCRIPTION |
|-------|---|---|
| T103 | FORM F3 | Replace sheet T103 with sheet T103 included in this addendum. Project will be under the 2021 IBC. |
| A304 | BASEBALL PRESSBOX PLANS & ELEVATIONS | Replace sheet A304 with sheet A304 included in this addendum. |
| A502 | ATHLETICS FINISH & DOOR SCHEDULE, DOOR & WINDOW TYPES & DETAILS | Replace sheet A502 with sheet A502 included in this addendum. |
| A707 | ATHLETICS WALL SECTIONS & TYPICAL DETAILS | Replace sheet A707 with sheet A707 included in this addendum. |
| C103 | DEMOLITION PLAN | Replace sheet C103 with sheet C103 included in this addendum. |
| C202 | OVERALL SITE PLAN | Replace sheet C202 with sheet C202 included in this addendum. |
| C204 | SITE PLAN AREA 2 | Replace sheet C204 with sheet C204 included in this addendum. |
| C206 | OVERALL GRADING PLAN | Replace sheet C206 with sheet C206 included in this addendum. |
| C209 | GRADING PLAN AREA 3 | Replace sheet C209 with sheet C209 included in this addendum. |
| C212 | EROSION CONTROL PLAN | Replace sheet C212 with sheet C212 included in this addendum. |
| C306 | STORM DETAILS | Replace sheet C306 with sheet C306 included in this addendum. |

ADDENDUM #02

EMERALD HIGH SCHOOL ADDITIONS &
RENOVATIONS
GREENWOOD SCHOOL DISTRICT 50
JCS PROJECT NO: 22016
APRIL 25, 2023



PRIOR APPROVALS:

Note: Manufacturers listed below “as approved” shall meet ALL requirements of the written specifications.

Must use Approved Manufacturers & Installers as listed below:

| <u>Specification Section</u> | <u>Manufacturer</u> | <u>Disposition</u> |
|--|-----------------------------|---------------------------|
| 07 42 13 – Metal Composite Material Wall Panel | Alfred USA | Approved |
| 07 41 13 – Metal Roof Panels | Metal Roofing Systems, Inc. | Approved |

END OF ADDENDUM #02

PART 1 - GENERAL

1.1 SECTION INCLUDES

- A. Hybrid SBS and PVC fleece-backed membrane roofing system.
- B. Roof insulation.
- C. Base sheet.

1.2 RELATED SECTIONS

- A. Division 03 Section "Concrete" for concrete.
- B. Division 06 Section "Miscellaneous Rough Carpentry" for wood nailers, cants, curbs, and blocking.
- C. Division 07 Section "Plaza Deck Paver System"
- D. Division 07 Section "Sheet Metal Flashing and Trim" for flashings and counter flashings.
- E. Division 22 Section "Storm Drainage Piping Specialties" for roof drains.

1.3 REFERENCES

- A. Roofing Terminology: Refer to the following publications for definitions of roofing work related terms in this Section:
 - 1. ASTM D 1079 "Standard Terminology Relating to Roofing and Waterproofing."
 - 2. Glossary of NRCA's "The NRCA Roofing and Waterproofing Manual."
 - 3. Roof Consultants Institute "Glossary of Building Envelope Terms."
- B. Sheet Metal Terminology and Techniques: SMACNA "Architectural Sheet Metal Manual."

1.4 DESIGN CRITERIA

- A. General: Installed roofing membrane system shall remain watertight; and resist specified wind uplift pressures, thermally induced movement, and exposure to weather without failure.
- B. Material Compatibility: Roofing materials shall be compatible with one another under conditions of service and application required, as demonstrated by roofing system manufacturer based on testing and field experience.
- C. Installer shall comply with current code requirements based on authority having jurisdiction.

- D. Wind Uplift Performance: Roofing system shall meet the intent of systems that have been successfully tested by a qualified testing and inspecting agency to resist wind uplift pressure calculated in accordance with ASCE 7.
- E. Fire-Test-Response Characteristics: Provide roofing materials with the fire-test-response characteristics indicated as determined by testing identical products per test method below by UL, FMG, or another testing and inspecting agency acceptable to authorities having jurisdiction. Materials shall be identified with appropriate markings of applicable testing and inspecting agency.
 - 1. Exterior Fire-Test Exposure: Class A; UL 790, for application and roof slopes indicated.

1.5 SUBMITTALS

- A. Product Data: Manufacturer's data sheets for each product to be provided.
- B. Detail Drawings: Provide roofing system details and details of attachment to other Work, including:
 - 1. Base flashings and membrane terminations.
 - 2. Tapered insulation, including slopes.
 - 3. Crickets, saddles, and tapered edge strips, including slopes.
 - 4. Insulation fastening and adhesive patterns.
- C. Verification Samples: Provide for each product specified.
- D. Installer Qualifications: A qualified firm that is approved, authorized, or licensed by roofing system manufacturer to install manufacturers product who is eligible to receive manufacturers special warranty.
- E. Maintenance Data: Refer to Johns Manville's latest published documents on www.JM.com.
- F. Guarantees: Provide manufacturer's current guarantee specimen.
- G. Roofing sub-contractor shall provide a copy of the final System Assembly Letter issued by Johns Manville Roofing Systems indicating that the products and system to be installed shall be eligible to receive the specified manufacturer's guarantee when installed by a certified JM contractor in accordance with our application requirements, inspected and approved by a JM Technical Representative.
- H. Prior to roofing system installation, roofing sub-contractor shall provide a copy of the Guarantee Application Confirmation document issued by Johns Manville Roofing Systems indicating that the project has been reviewed for eligibility to receive the specified guarantee and registered.

1.6 QUALITY ASSURANCE

- A. Installer Qualifications: Qualified firm that is approved, authorized, or licensed by roofing system manufacturer to install manufacturer's product who is eligible to receive the specified manufacturer's guarantee.
- B. Manufacturer Qualifications: Qualified domestic U.S. owned and based manufacturer that has UL listing or accredited testing agency for roofing system identical to that used for this Project.

- C. Testing Agency Qualifications: An independent testing agency with the experience and capability to conduct the testing indicated, as documented according to ASTM E 329.
- D. Test Reports:
 - 1. Roof drain and leader test or submit plumber's verification.
 - 2. Core cut, if required.
 - 3. Roof deck fastener pullout test, if required.
- E. Moisture Survey, if Required:
 - 1. Submit prior to installation, results of a non-destructive moisture test of roof system completed by approved third party. Utilize one of the approved methods:
 - a. Infrared Thermography
 - b. Nuclear Backscatter
- F. Source Limitations: Obtain all components from the single source roofing manufacturer guaranteeing the roofing system. All products used in the system shall be labeled by the single source roofing manufacturer issuing the guarantee.

1.7 DELIVERY, STORAGE, AND HANDLING

- A. Deliver roofing materials in original containers with seals unbroken and labeled with manufacturer's name, product brand name and type, date of manufacture, and directions for storage.
- B. Store liquid materials in their original undamaged containers in a clean, dry, protected location and within the temperature range required by roofing system manufacturer.
- C. Protect roof insulation materials from physical damage and from deterioration by sunlight, moisture, soiling, and other sources. Comply with insulation manufacturer's written instructions for handling, storing, and protecting during installation.
- D. Handle and store roofing materials and place equipment in a manner to avoid permanent deflection of deck.

1.8 PROJECT CONDITIONS

- A. Weather Limitations: Proceed with installation only when current and forecasted weather conditions permit roofing system to be installed in accordance with manufacturer's written instructions and guarantee requirements.

1.9 GUARANTEE

- A. Provide manufacturer's system guarantee equal to Johns Manville's Peak Advantage No Dollar Limit Roofing System Guarantee.
 - 1. Single-source special guarantee includes roofing membrane, base flashings, roofing membrane accessories, roof insulation, fasteners, adhesives, cover board, substrate board, base sheet,

- walkway products, and other approved single-source components of roofing system marketed by the manufacturer.
 - 2. Guarantee Period: 20 years from date of Substantial Completion.
- B. Installer's Guarantee: Submit roofing Installer's guarantee, including all components of roofing system for the following guarantee period:
- 1. Guarantee Period: Two years from date of Substantial Completion.

PART 2 - PRODUCTS

2.1 POLYVINYL-CHLORIDE ROOFING MEMBRANE - PVC

- A. PVC CAP SHEET: ASTM D 4434, Type III, fabric reinforced that contains KEE (Elvaloy) to reduce plasticizer migration. Basis of design: JM PVC FB
- 1. Thickness: 60 mils (1.52 mm), nominal.
 - 2. Fabric Fleece Backed
 - 3. Exposed Face Color: Sandstone

2.2 AUXILIARY ROOFING MATERIALS – SINGLE PLY

- A. General: Auxiliary materials recommended by roofing system manufacturer for intended use and compatible with membrane roofing.
- B. Sheet Flashing: Manufacturer's internally reinforced or scrim reinforced, smooth backed membrane with same thickness and color as sheet membrane. Basis of design: JM PVC
- C. Bonding Adhesive: Manufacturer's standard solvent-based bonding adhesive for base flashings. Basis of design: JM PVC Membrane Adhesive Low VOC

2.3 VENTING BASE SHEET ON CONCRETE SUBSTRATE:

- A. Base Sheet: ASTM D 4897, Type II, venting, non-perforated, heavyweight, asphalt-impregnated and -coated, glass-fiber base sheet with coarse granular surfacing or embossed venting channels on bottom surface. Basis of design: Ventsulation Felt

2.4 SBS BASE AND INTERMEDIATE PLY SHEET MATERIALS:

- A. Base Roofing Membrane Sheet: ASTM D 6163, Type I, Grade S, fiber glass-reinforced base sheet. Basis of design: DynaBase
- B. Intermediate Roofing Membrane Sheet: ASTM D 6162, Type III, Grade G, composite polyester- and glass-fiber-reinforced, SBS-modified asphalt sheet; smooth surfaced; suitable for application method specified. Basis of design: DynaMax FR Smooth

2.5 WALKWAYS AT MECHANICAL UNITS:

- A. Flexible Walkways: Factory-formed, nonporous, heavy-duty, slip-resisting, surface-textured walkway pads sourced from membrane roofing system manufacturer. Basis of design: JM PVC Heavy Duty Walkpad

2.6 ROOF INSULATION

- A. General: Preformed roof insulation boards that comply with requirements and referenced standards, selected from manufacturer's standard sizes and of thicknesses indicated.
- B. Polyisocyanurate Board Insulation: ASTM C 1289, Type II, Class 1, Grade 3. Basis of design ENRGY 3 25 PSI
 - 1. Provide insulation package with minimum R Value: R-25.
 - 2. Provide insulation package in multiple layers.
 - 3. Minimum Long-Term Thermal Resistance (LTTR): 5.7 per inch.

2.7 TAPERED INSULATION

- A. Tapered Insulation: ASTM C 1289, Type II, Class 3 (25 psi), provide factory-tapered insulation boards fabricated to slope of 1/4 inch per 12 inches (1:48), unless otherwise indicated. Basis of design: Tapered ENRGY 3 25 PSI

2.8 INSULATION ACCESSORIES

- A. General: Roof insulation accessories recommended by insulation manufacturer for intended use and compatible with membrane roofing.
- B. Provide saddles, crickets, tapered edge strips, and other insulations shapes where indicated for sloping to drain. Fabricate to slopes indicated. Basis of design: Tapered Fesco Edge Strip
- C. Urethane Adhesive: Manufacturer's two component polyurethane adhesive formulated to adhere insulation to substrate. Basis of design: JM Two-Part Urethane Insulation Adhesive (UIA)
- D. Wood Nailer Strips: Comply with requirements in Division 06 Section "Miscellaneous Rough Carpentry."

PART 3 - EXECUTION

3.1 EXAMINATION

- A. Examine substrates, areas, and conditions for compliance with the requirements affecting performance of roofing system.
 - 1. General:
 - a. Verify that roof openings and penetrations are in place and set and braced and that roof drains are securely clamped in place.

- b. Verify that wood cants, blocking, curbs, and nailers are securely anchored to roof deck at penetrations and terminations and that nailers match thicknesses of insulation.
 2. Concrete Decks:
 - a. Verify that concrete curing compounds that will impair adhesion of roofing components to roof deck have been removed.
 - b. Verify that concrete substrate is visibly dry and free of moisture.
 3. Ensure general rigidity and proper slope for drainage
 4. Verify that deck is securely fastened with no projecting fasteners and with no adjacent units in excess of 1/16 inch (1.6 mm) out of plane relative to adjoining deck.
- B. Unacceptable panels should be brought to the attention of the General Contractor and Project Owner's Representative and shall be corrected prior to installation of roofing system.
 - C. Proceed with installation only after unsatisfactory conditions have been corrected.

3.2 PREPARATION

- A. Clean and remove from substrate sharp projections, dust, debris, moisture, and other substances detrimental to roofing installation in accordance with roofing system manufacturer's written instructions.
- B. Prevent materials from entering and clogging roof drains and conductors and from spilling or migrating onto surfaces of other construction.
- C. If applicable, prime surface of deck with primer at a rate recommended by roofing manufacturer and allow primer to dry.
- D. Proceed with each step of installation only after unsatisfactory conditions have been corrected.

3.3 BASE-SHEET INSTALLATION

- A. Install one lapped base sheet course and adhered to substrate according to roofing system manufacturer's written instructions.
 1. Enhance adhesive rates in perimeter and corner zones according to code requirements, wind uplift system approvals or manufacturer's guarantee requirements, whichever is more stringent.
- B. Comply with roofing system manufacturer's written instructions for installing roof insulation.
- C. Proceed with installation only after unsatisfactory conditions have been corrected.

3.4 INSULATION INSTALLATION

- A. Coordinate installation of roof system components so insulation are not exposed to precipitation or left exposed at the end of the workday.

- B. Comply with roofing system manufacturer's written instructions for installation of roof insulation ~~and cover board~~.
- C. Install tapered insulation under area of roofing to conform to slopes indicated.
- D. Install insulation boards with long joints in a continuous straight line. Joints should be staggered between rows, abutting edges and ends per manufacturer's written instructions. Fill gaps exceeding 1/4 inch (6 mm) with like material.
- E. Install 2 or more layers with joints of each succeeding layer staggered from joints of previous layer a minimum of 6 inches (150 mm) in each direction.
- F. Trim surface of insulation boards where necessary at roof drains so completed surface is flush and does not restrict flow of water.
- G. Install tapered edge strips at perimeter edges of roof that do not terminate at vertical surfaces.
- H. Adhered Insulation: Adhere each layer of insulation to substrate as follows:
 - 1. Install each layer in a two-part urethane adhesive according to roofing system manufacturer's instruction.
 - 2. Install each layer to resist uplift pressure at corners, perimeter, and field of roof.

3.5 ROOFING MEMBRANE INSTALLATION, GENERAL

- A. Install roofing membrane in accordance with roofing system manufacturer's written instructions, applicable recommendations of the roofing manufacturer and requirements in this Section.
- B. Where roof slope exceeds 1/2 inch per 12 inches (1:24), contact the membrane manufacturer for installation instructions regarding installation direction and backnailing.
- C. Cooperate with testing and inspecting agencies engaged or required to perform services for installing roofing system.
- D. Coordinate installing roofing system so insulation and other components of the roofing membrane system not permanently exposed are not subjected to precipitation or left uncovered at the end of the workday or when rain is imminent.
 - 1. Provide tie-offs at end of each day's work to cover exposed roofing membrane sheets and insulation.
 - 2. Complete terminations and base flashings and provide temporary seals to prevent water from entering completed sections of roofing system.
 - 3. Remove and discard temporary seals before beginning work on adjoining roofing.

3.6 SBS-MODIFIED BITUMINOUS MEMBRANE INSTALLATION

- A. Install base sheet modified bituminous roofing membrane sheet according to the roofing manufacturer's approved adhesives at rates required to meet wind requirements specific to the project site. Install intermediate modified bituminous roofing membrane sheet on the initial sheet.
 - 1. Unroll roofing membrane sheets and allow them to relax.

2. Install one lapped base sheet course and mechanically fasten to substrate according to roofing system manufacturer's written instructions.
 - a. Side and end laps shall be installed using heat welding techniques.
 3. Adhere modified bituminous roofing membrane initial and intermediate sheets to substrate in cold-applied adhesive according to roofing system manufacturer's instruction.
- B. Laps: Accurately align roofing membrane sheets, without stretching, and maintain uniform side and end laps. Stagger end laps. Completely bond and seal laps, leaving no voids.
1. Repair tears and voids in laps and lapped seams not completely sealed.
 2. Apply roofing granules to cover exuded bead at laps while bead is hot.
- C. Install roofing membrane sheets so side and end laps shed water.

3.7 ADHERED ROOFING PVC FLEECE BACK MEMBRANE INSTALLATION

- A. Install roofing membrane over area to receive roofing in accordance with membrane roofing system manufacturer's written instructions.
1. Unroll roofing membrane and allow to relax before installing.
- B. Accurately align roofing membrane and maintain uniform side and end laps of minimum dimensions required by manufacturer. Stagger end laps.
- C. Urethane Membrane Adhesive for fleece backed membranes: Apply Urethane Adhesive to substrate at rate required by manufacturer and install fleece-backed roofing membrane. Do not apply bonding adhesive to splice area of roofing membrane.
- D. Apply roofing membrane with side laps shingled with roof slope, where possible.
- E. Seams: Clean seam areas, overlap roofing membrane, and hot-air weld side and end laps of roofing membrane according to manufacturer's written instructions to ensure a watertight seam installation.
1. Test lap edges with probe to verify seam weld continuity. Apply lap sealant to seal cut edges of roofing membrane.
 2. Verify field strength of seams a minimum of twice daily and repair seam sample areas.
 - a. Remove and repair any unsatisfactory sections before proceeding with installation.
 3. Repair tears, voids, and incorrectly lapped seams in roofing membrane that do not meet requirements.
- F. Spread sealant or mastic bead over deck drain flange at deck drains and securely seal roofing membrane in place with clamping ring.

3.8 BASE FLASHING INSTALLATION

- A. Install sheet flashings and preformed flashing accessories and adhere to substrates according to membrane roofing system manufacturer's written instructions.
- B. Apply solvent-based bonding adhesive at required rate and allow to partially dry. Do not apply bonding adhesive to seam area of flashing.
- C. Apply single ply liquid applied flashing system per manufacturer's written instructions.
- D. Flash penetrations and field-formed inside and outside corners per manufacturer's installation instructions.
- E. Clean seam areas and overlap and firmly roll sheet flashings into the adhesive. Weld side and end laps to ensure a watertight seam installation.
- F. Terminate and seal top of sheet flashings and mechanically anchor to substrate through termination bars.

3.9 EDGE METAL INSTALLATION

- A. Examine substrates and conditions under which sheet metal flashing and trim are to be installed and verify that work may properly commence. Do not proceed with installation until unsatisfactory conditions have been corrected.
- B. Provide edge details as indicated on the Drawings. Install in accordance with the membrane manufacturer's requirements and SMACNA's "Architectural Sheet Metal Manual."
- C. Join individual sections in accordance with the membrane manufacturer's requirements and SMACNA's "Architectural Sheet Metal Manual".

3.10 WALKWAY INSTALLATION

- A. Flexible Walkways: Install walkway products in locations indicated. Heat weld and adhere walkway products to substrate according to roofing system manufacturer's written instructions.
- B. Roof-Paver Walkways: Install walkway roof pavers according to manufacturer's written instructions in locations indicated, to form walkways.
- C. Proceed with installation only after unsatisfactory conditions have been corrected.

3.11 FIELD QUALITY CONTROL

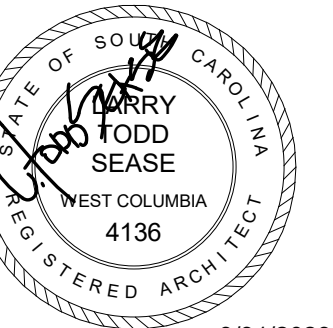
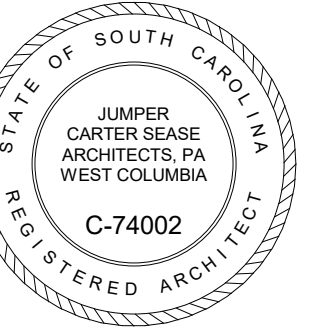
- A. Owner will engage a qualified independent testing and inspecting agency to perform roof tests and inspections and to prepare test reports.
- B. Final Roof Inspection: Arrange for roofing system manufacturer's technical representative to inspect roofing installation on completion and submit report to Architect.
- C. Repair or remove and replace components of roofing system where test results or inspections indicate that they do not comply with specified requirements.

- D. Additional testing and inspecting, at Contractor's expense, will be performed to determine compliance of replaced or additional work with specified requirements.

3.12 PROTECTION AND CLEANING

- A. Protect roofing system from damage and wear during remainder of construction period.
- B. Correct deficiencies in or remove roofing system that does not comply with requirements, repair substrates, and repair or reinstall roofing system to a condition free of damage and deterioration at time of Substantial Completion and according to warranty requirements.
- C. Clean overspray and spillage from adjacent construction using cleaning agents and procedures recommended by manufacturer of affected construction.

END OF SECTION 075419



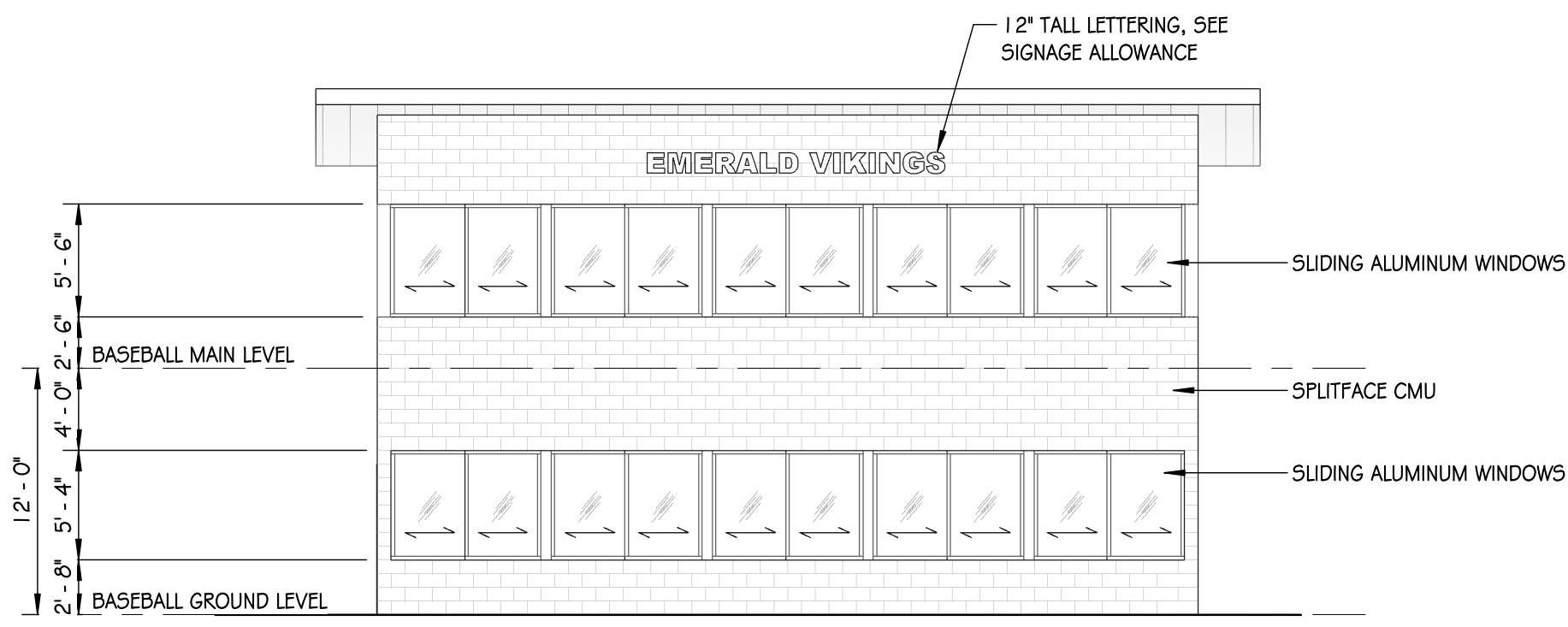
3/31/2023

EMERALD HIGH SCHOOL ADDITIONS
GREENWOOD SCHOOL DISTRICT 50
150 BYPASS 225, GREENWOOD, SC 29646

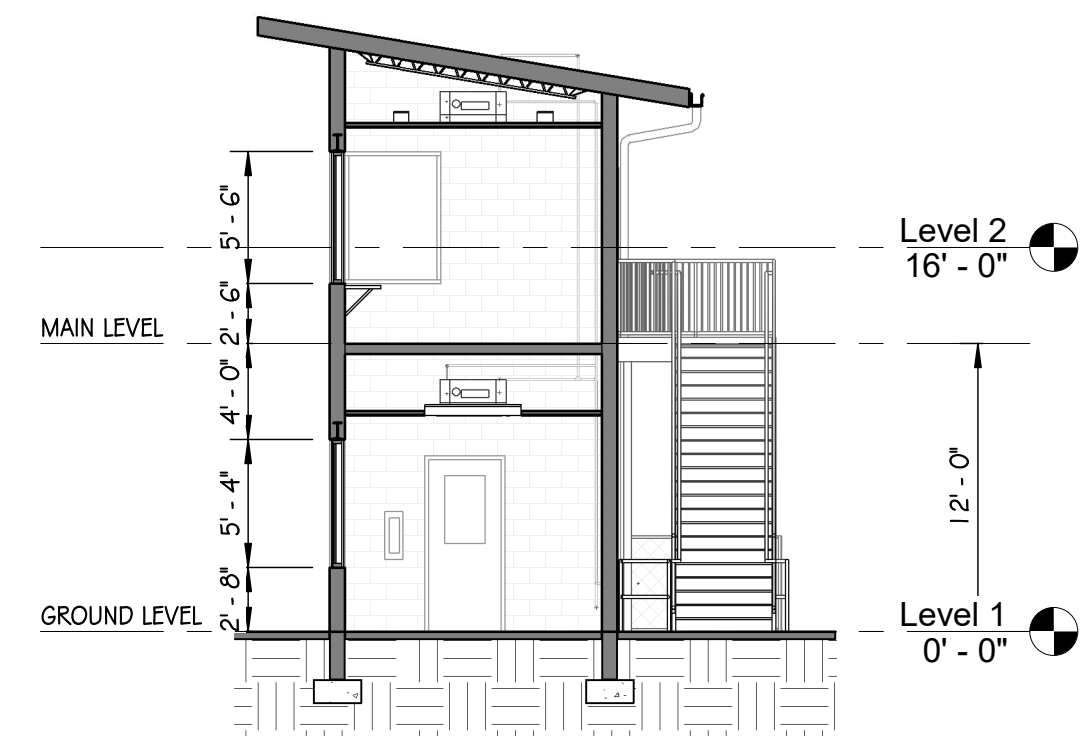
| No | Description | Date |
|----|-------------|------------|
| 2 | Addendum #2 | 04/25/2023 |

| | |
|--------------|--------------------------------------|
| DRAWN BY: | BK |
| CHECKED BY: | TS |
| COMM NO.: | 22016 |
| DATE: | MAR 31, 2023 |
| SHEET TITLE: | BASEBALL PRESSBOX PLANS & ELEVATIONS |

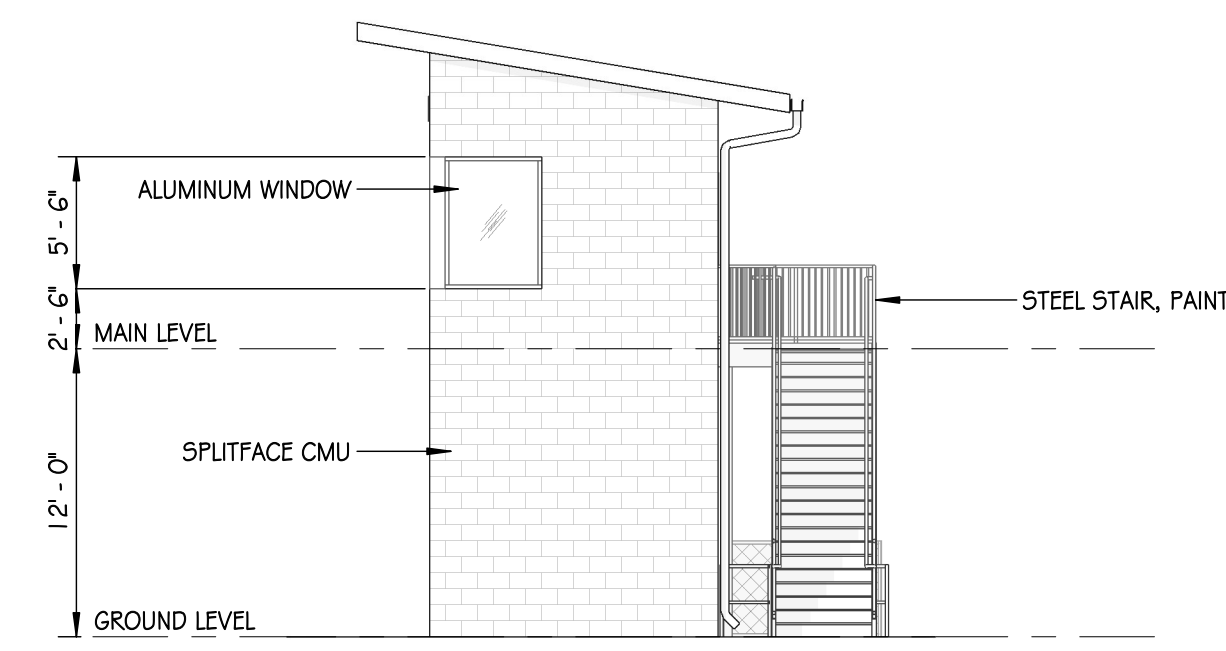
SHEET NO:
A304



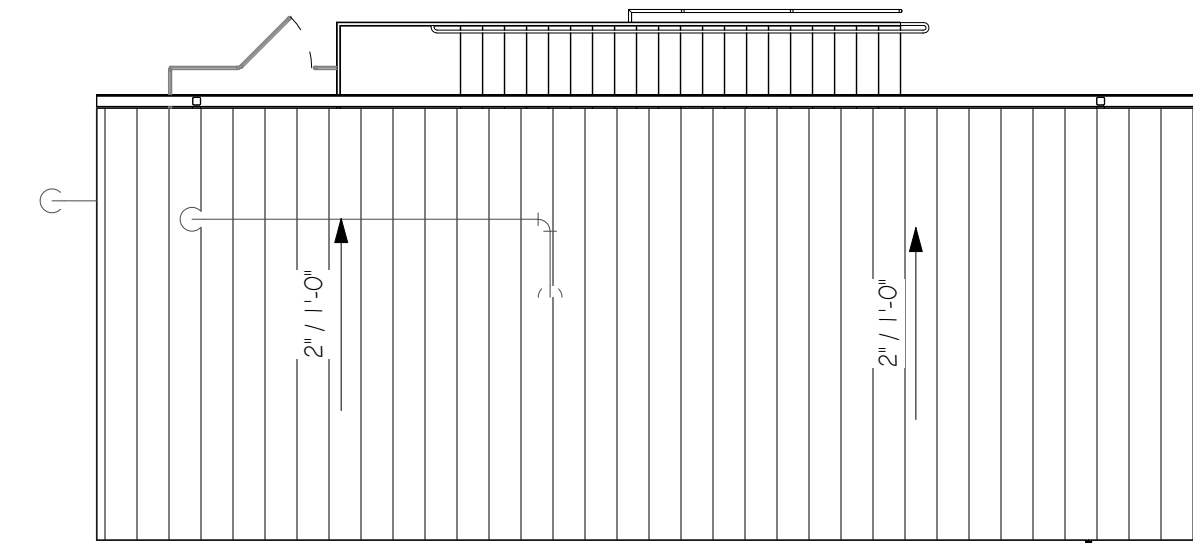
1 BASEBALL PRESSBOX ELEVATION - 1
1/8" = 1'-0"



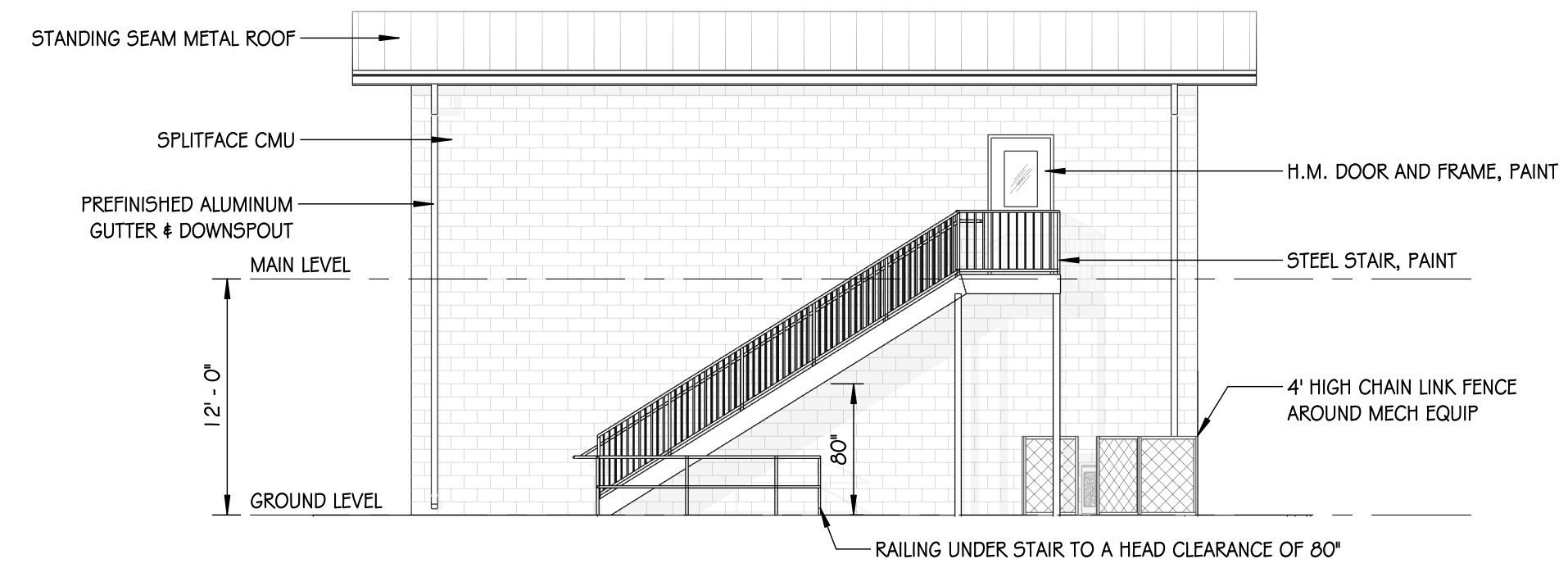
5 BASEBALL PRESSBOX BUILDING SECTION - 1
1/8" = 1'-0"



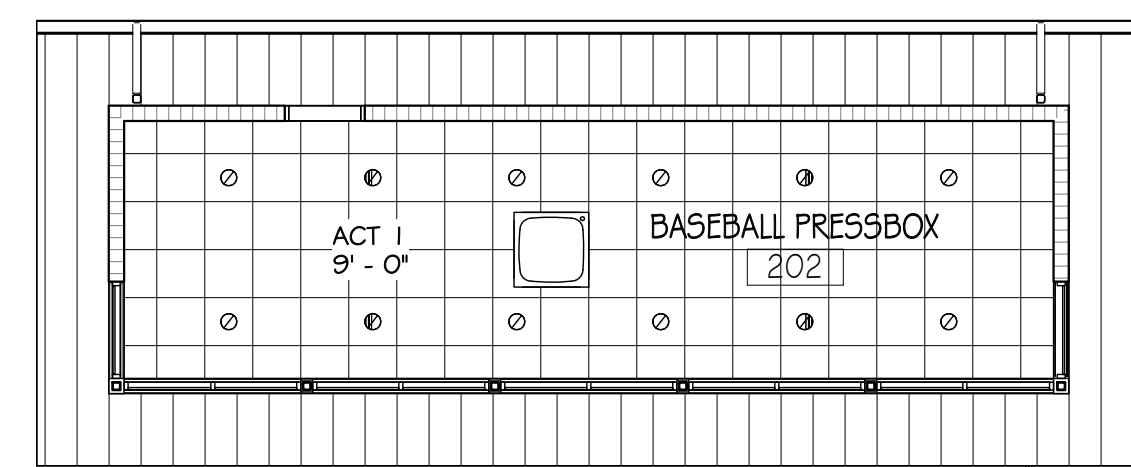
2 BASEBALL PRESSBOX ELEVATION - 2
1/8" = 1'-0"



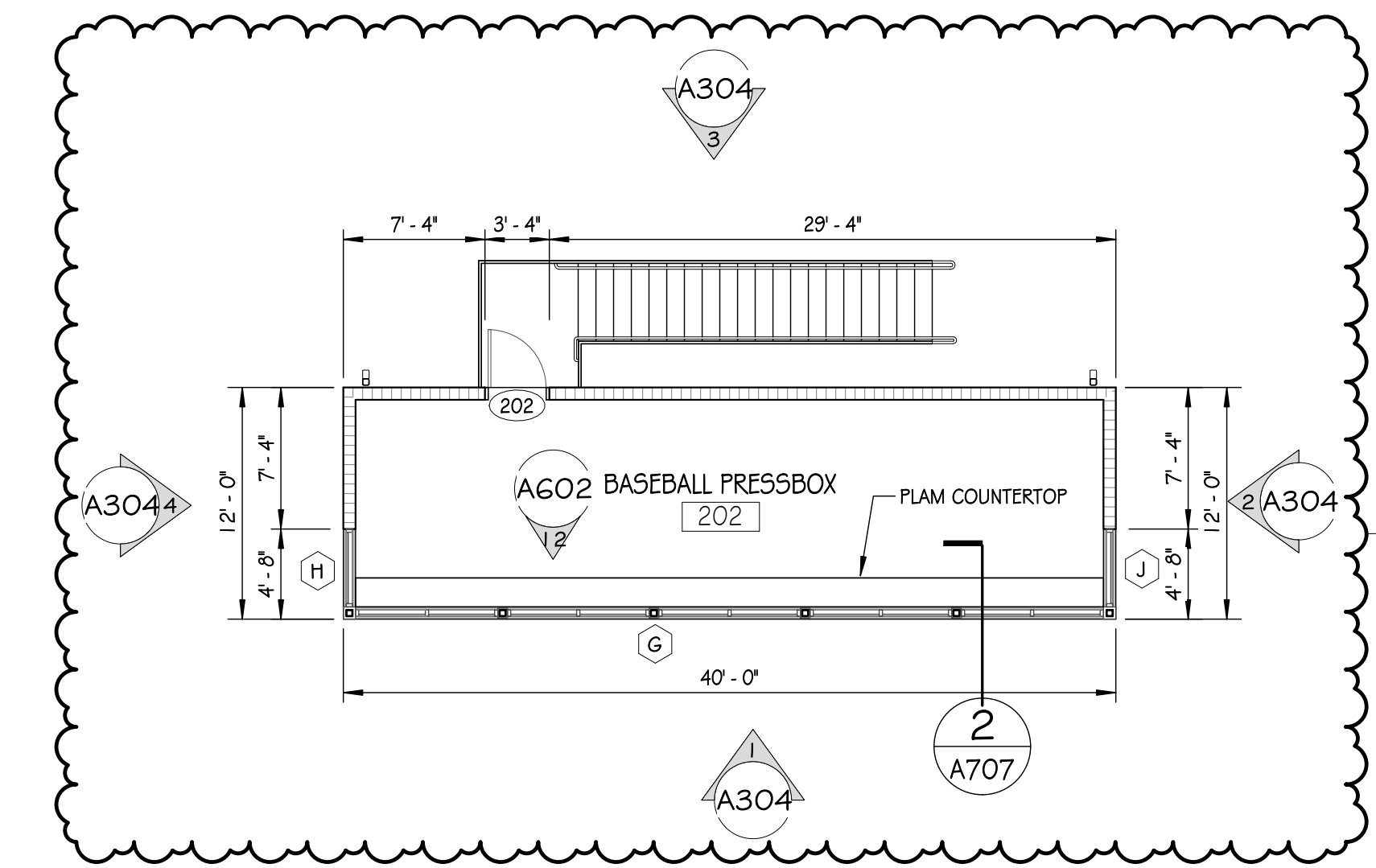
BASEBALL PRESSBOX ROOF PLAN
1/8" = 1'-0"



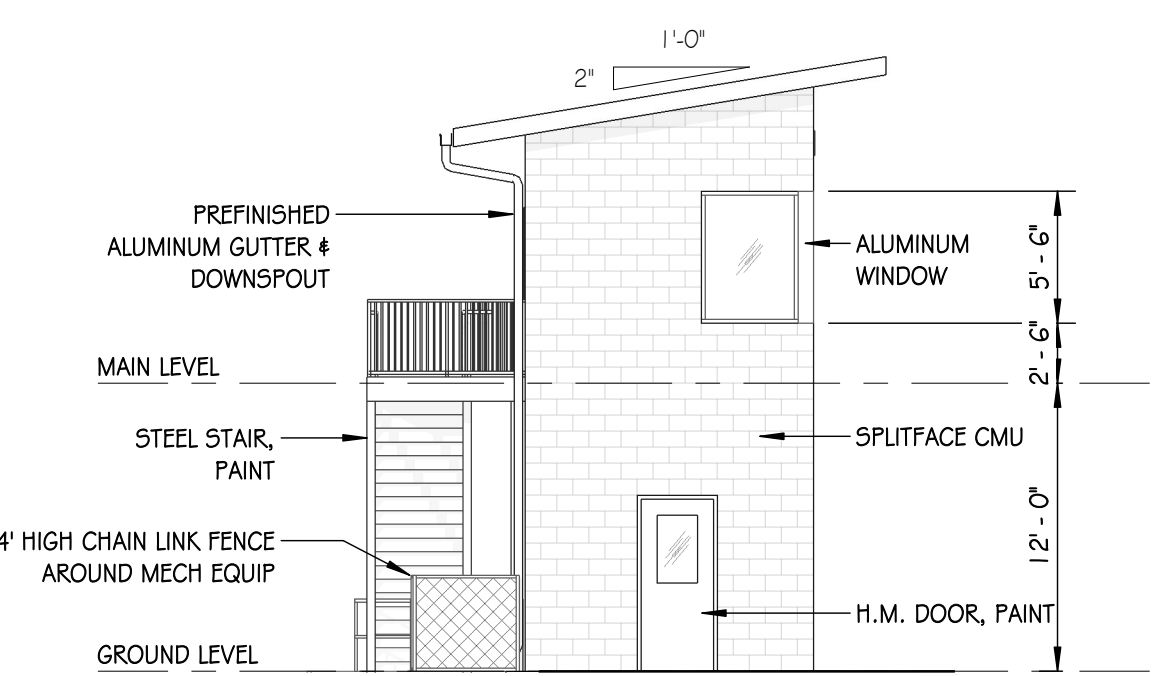
3 BASEBALL PRESSBOX ELEVATION - 3
1/8" = 1'-0"



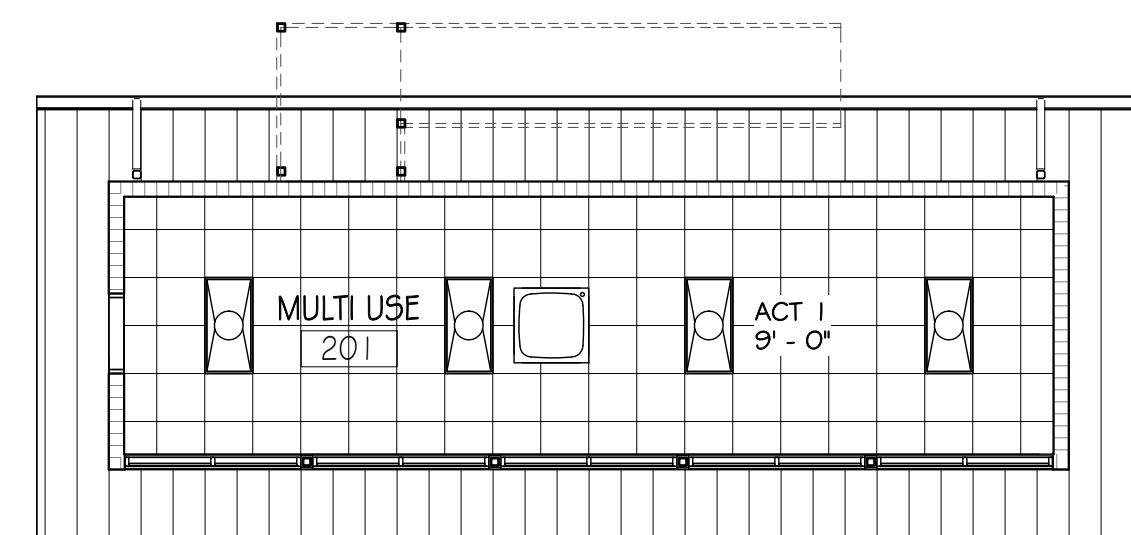
BASEBALL PRESSBOX MAIN LEVEL CEILING PLAN
1/8" = 1'-0"



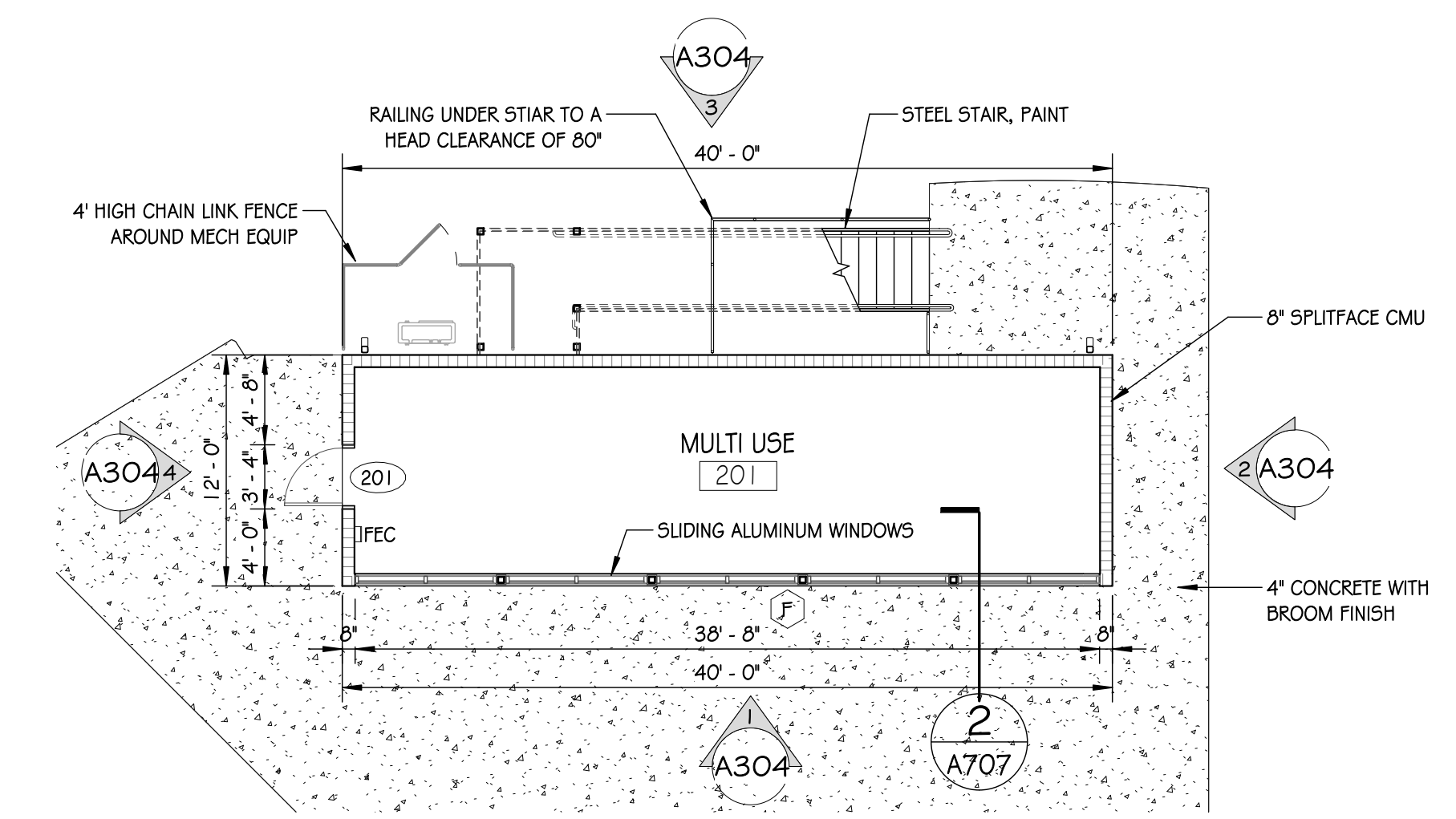
BASEBALL PRESSBOX MAIN LEVEL PLAN
1/8" = 1'-0"



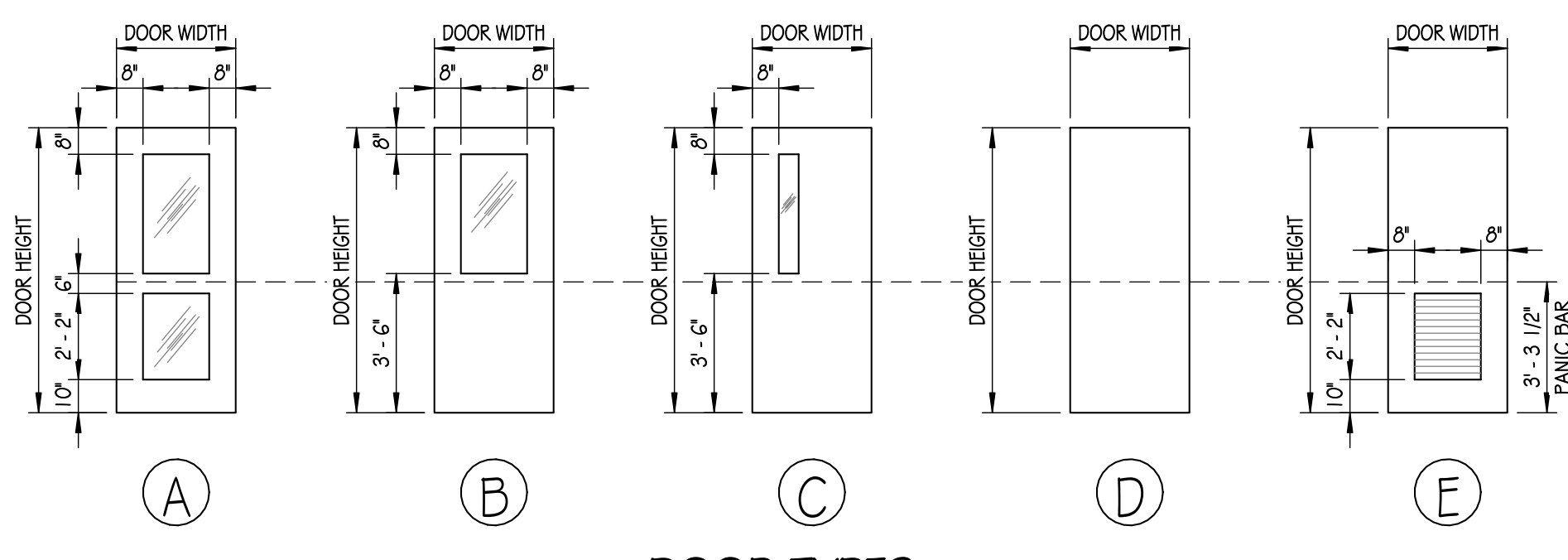
4 BASEBALL PRESSBOX ELEVATION - 4
1/8" = 1'-0"



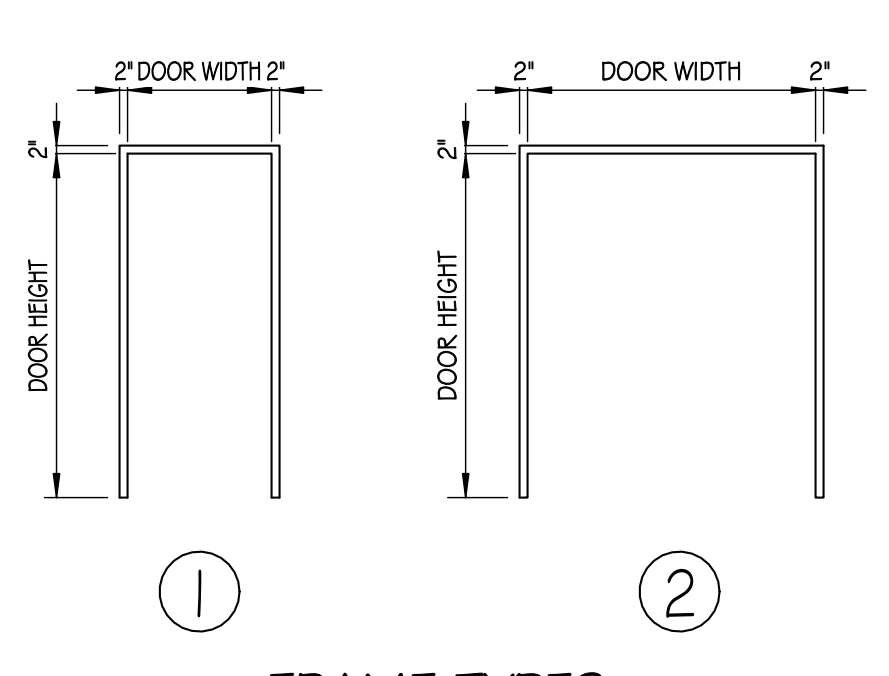
BASEBALL PRESSBOX GROUND LEVEL CEILING PLAN
1/8" = 1'-0"



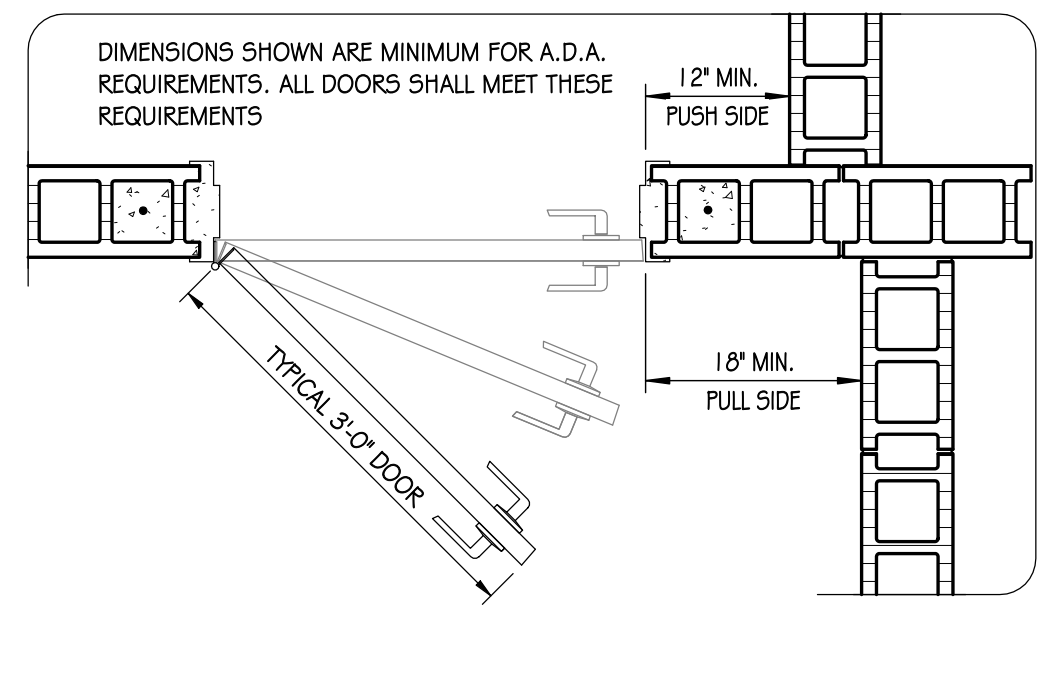
BASEBALL PRESSBOX GROUND LEVEL PLAN
1/8" = 1'-0"



DOOR TYPES
1/4" = 1'-0"

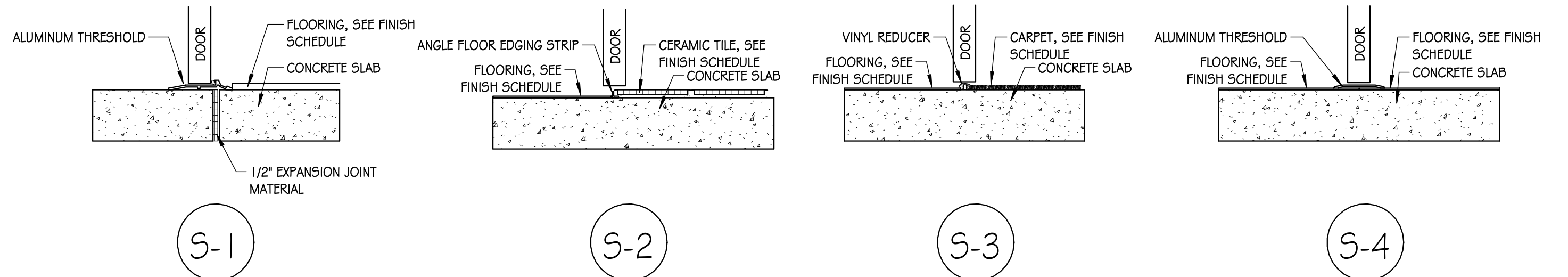
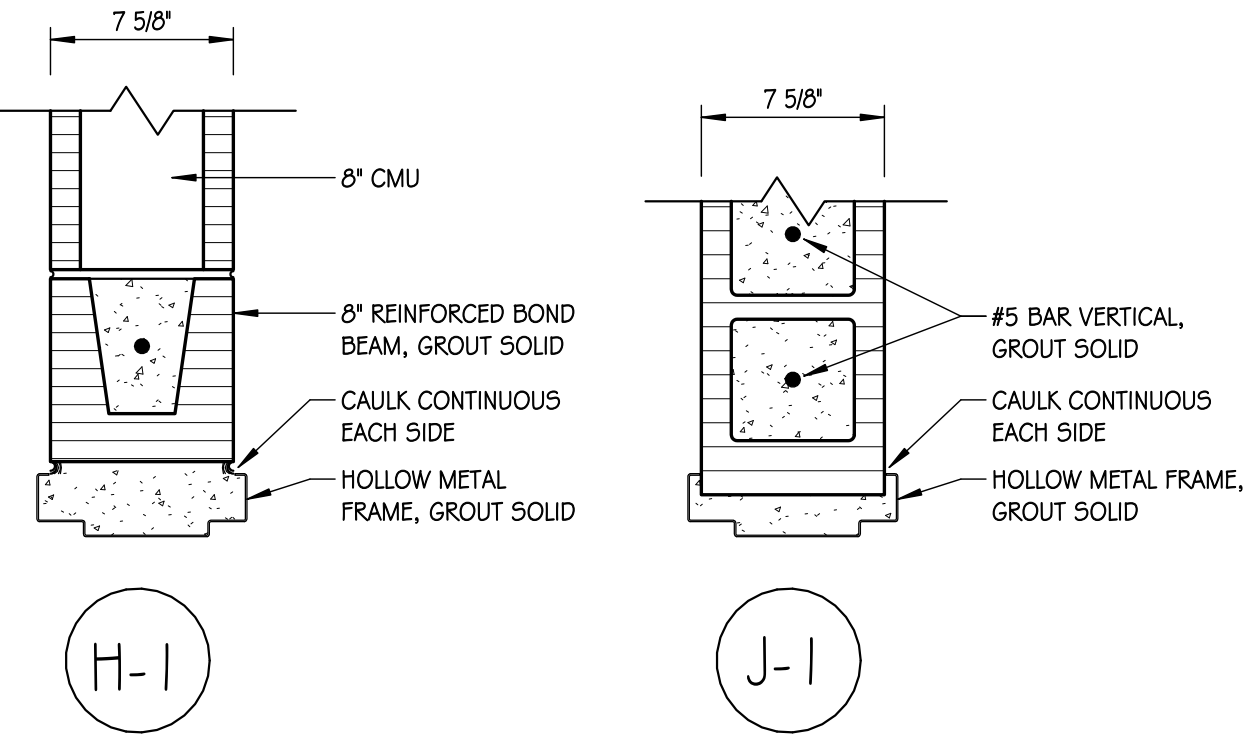


FRAME TYPES
1/4" = 1'-0"



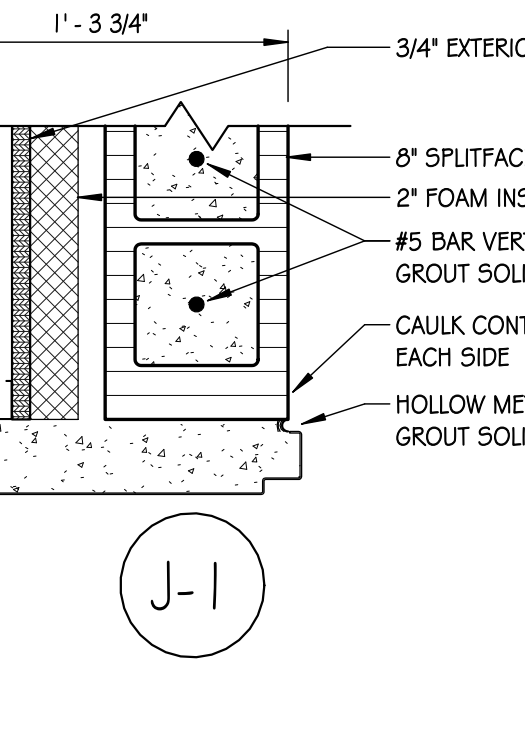
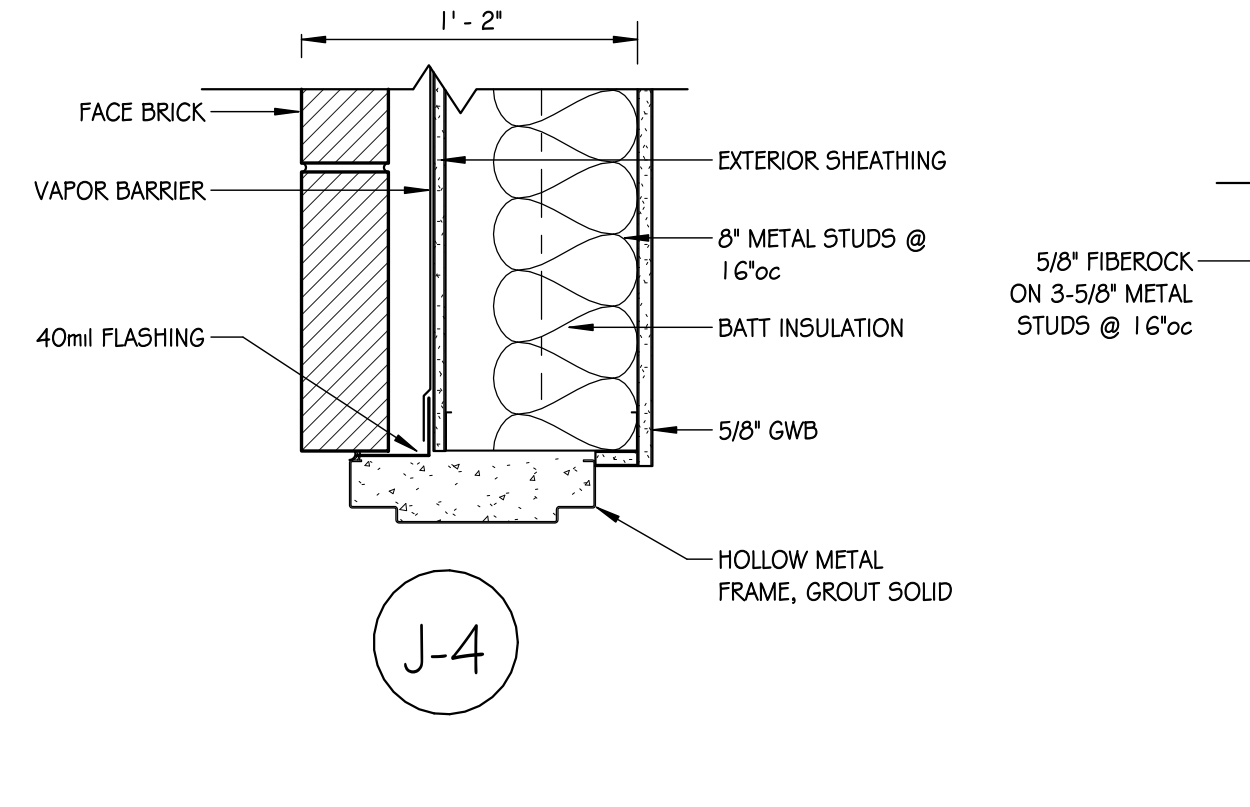
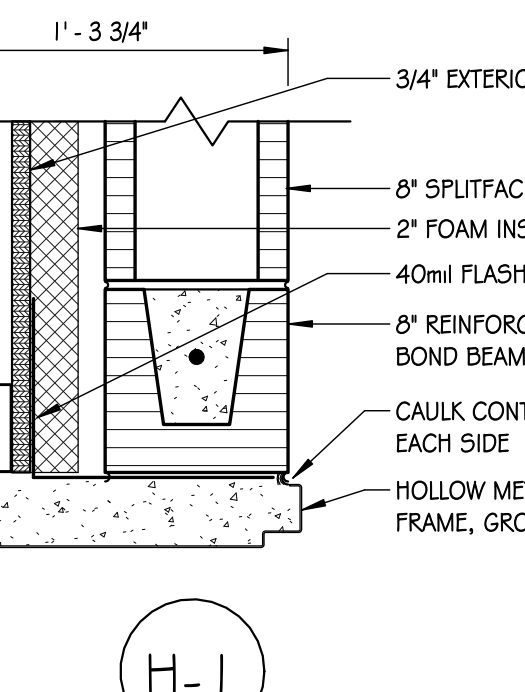
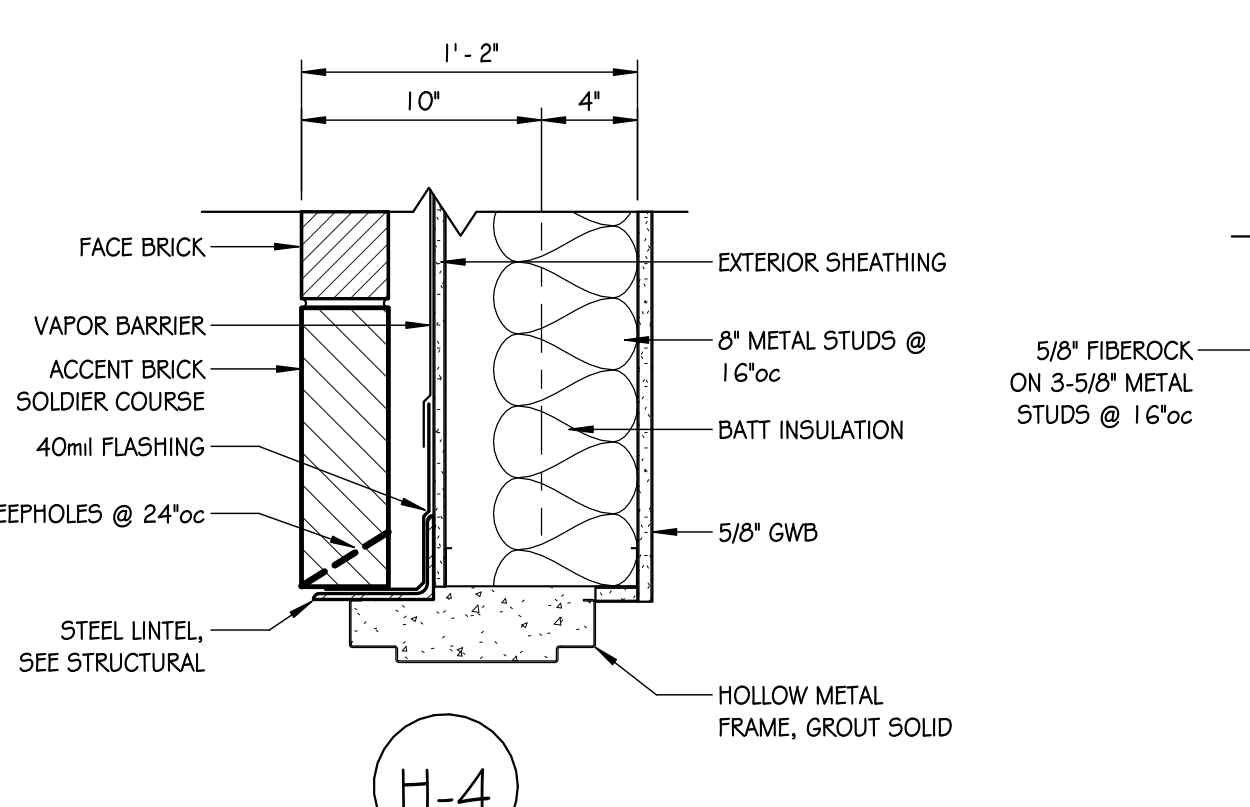
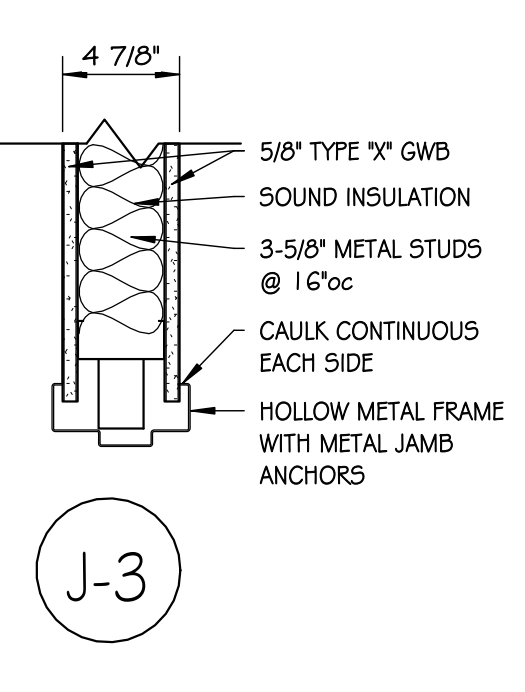
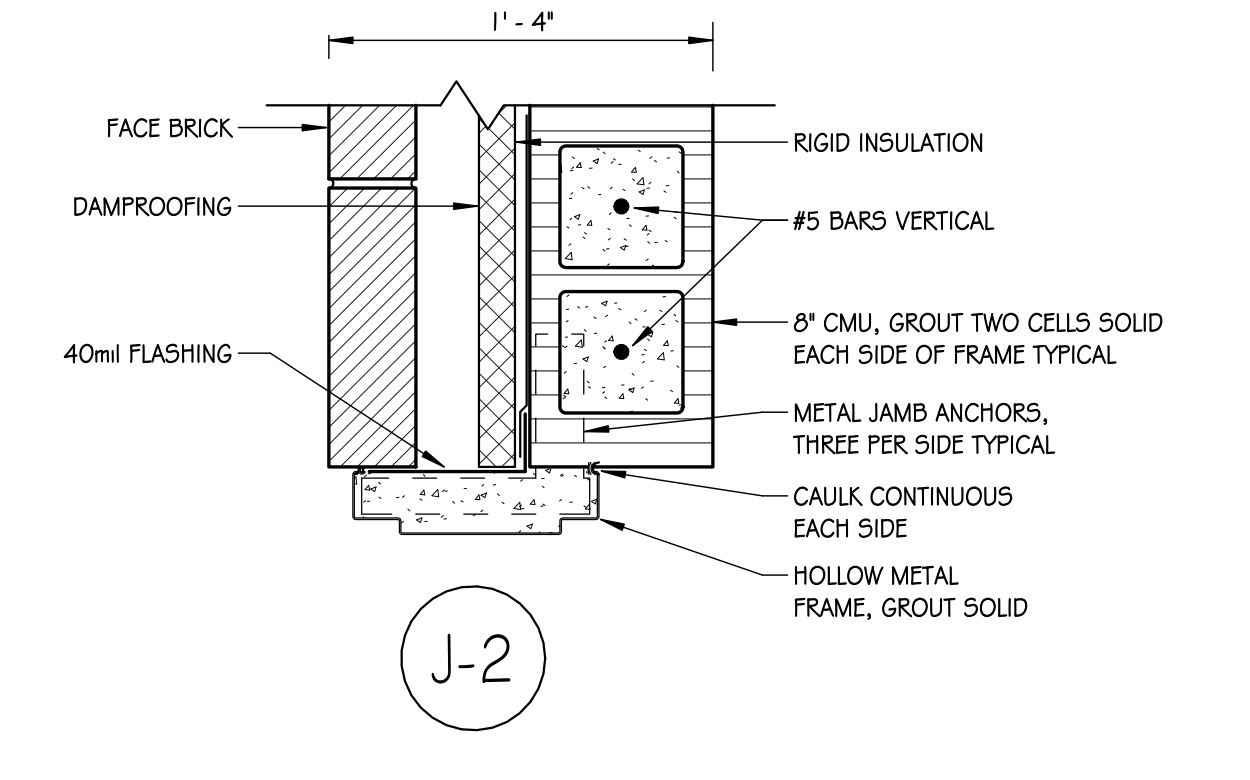
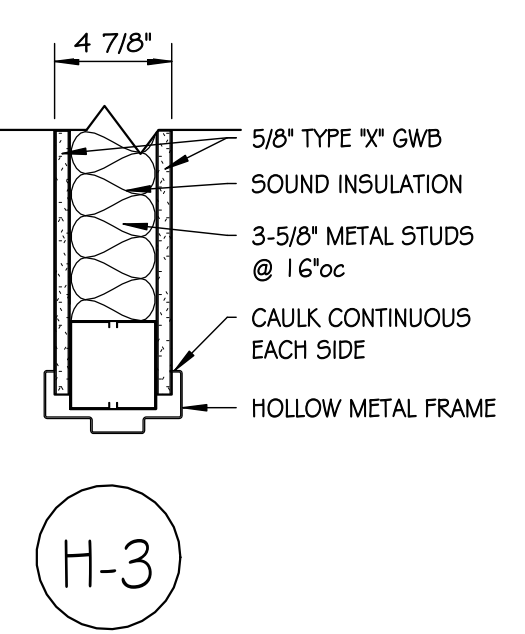
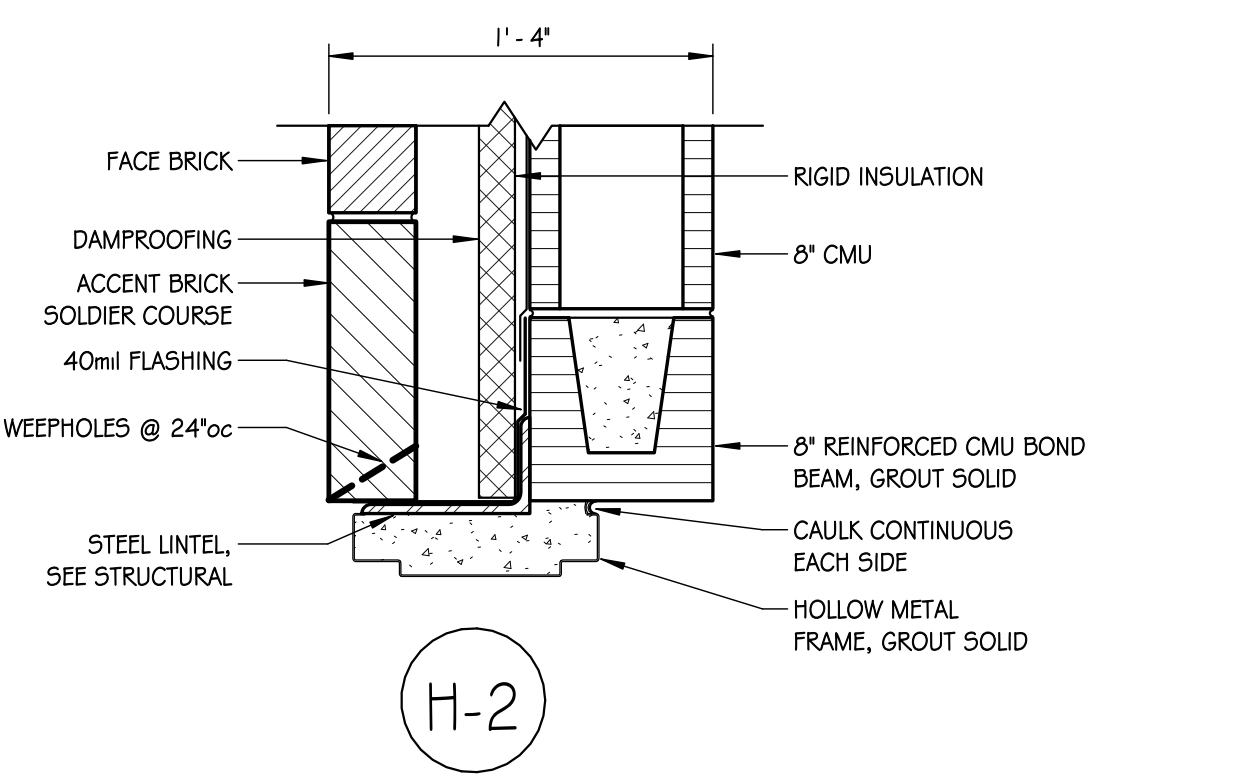
TYP. DOOR CLEARANCE
3/4" = 1'-0"

| FINISH SCHEDULE | | | | | | | | COMMENTS |
|-----------------|-------------------|-----------------|--------------|------------|------------|-----------|-----------|----------|
| ROOM # | ROOM NAME | FLOOR FINISH | BASE TYPE | WALL NORTH | WALL SOUTH | WALL EAST | WALL WEST | |
| 101 | ELEV MACH | SEALED CONCRETE | | PAINT | PAINT | PAINT | PAINT | |
| 102 | ELECTRICAL | SEALED CONCRETE | | PAINT | PAINT | PAINT | PAINT | |
| 103 | STORAGE | SEALED CONCRETE | | PAINT | PAINT | PAINT | PAINT | |
| 121 | COACH | CARPET | RUBBER | PAINT | PAINT | PAINT | PAINT | |
| 122 | SCORING/P.A. | CARPET | RUBBER | PAINT | PAINT | PAINT | PAINT | |
| 123 | MEDIA | CARPET | RUBBER | PAINT | PAINT | PAINT | PAINT | |
| 124 | COACH | CARPET | RUBBER | PAINT | PAINT | PAINT | PAINT | |
| 125 | TOILET | CERAMIC TILE | CERAMIC TILE | PAINT | PAINT | PAINT | PAINT | |
| 126 | TOILET | CERAMIC TILE | CERAMIC TILE | PAINT | PAINT | PAINT | PAINT | |
| 127 | JANITOR | CERAMIC TILE | CERAMIC TILE | PAINT | PAINT | PAINT | PAINT | |
| 128 | MECH | VCT | RUBBER | PAINT | PAINT | PAINT | PAINT | |
| 129 | DATA | VCT | RUBBER | PAINT | PAINT | PAINT | PAINT | |
| 130 | PRESS BOX | CARPET | RUBBER | PAINT | PAINT | PAINT | PAINT | |
| 201 | MULTI USE | VCT | RUBBER | PAINT | PAINT | PAINT | PAINT | |
| 202 | BASEBALL PRESSBOX | VCT | RUBBER | PAINT | PAINT | PAINT | PAINT | |

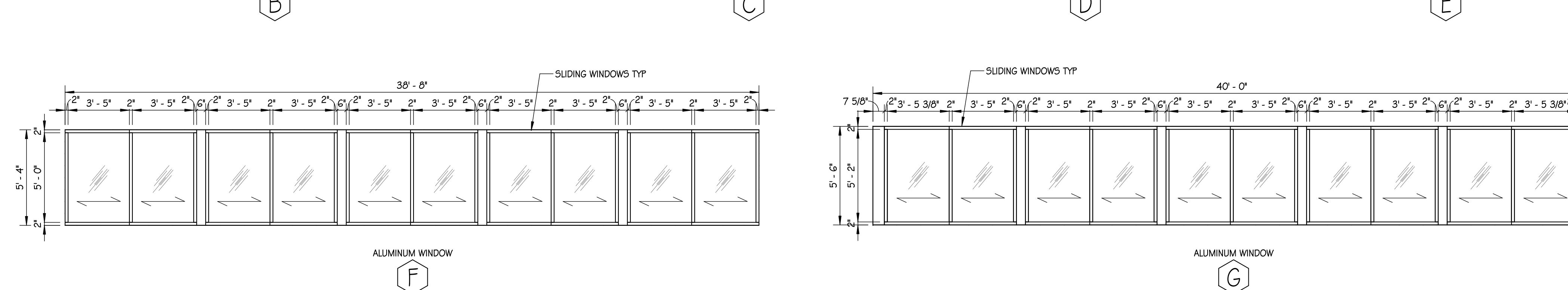
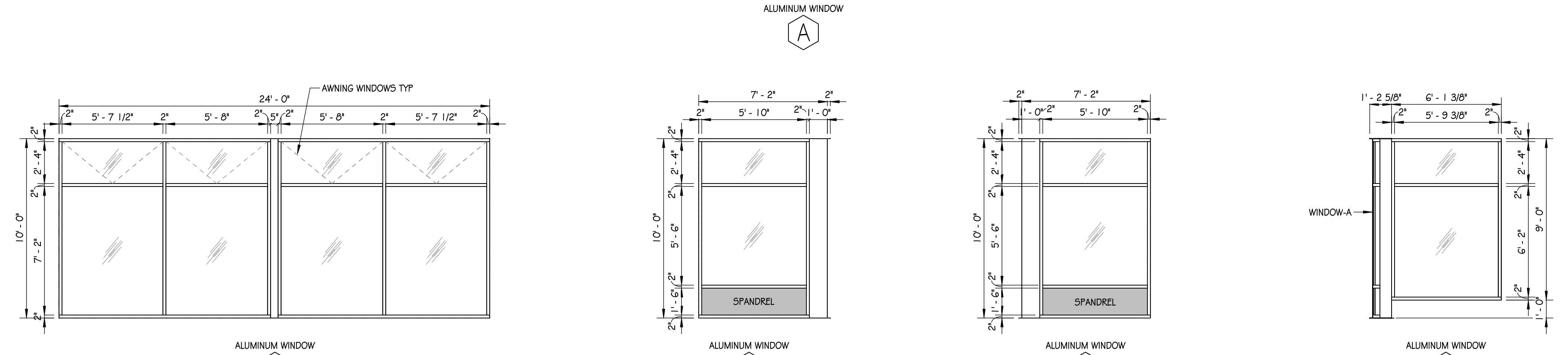
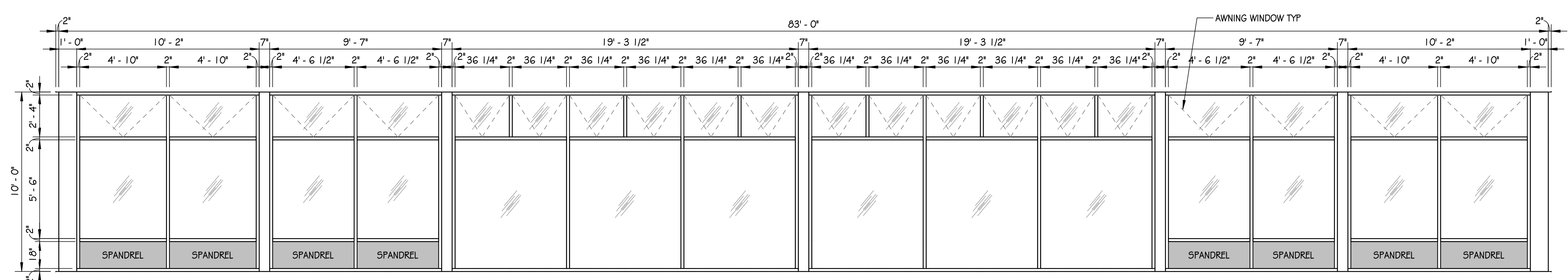


SILL DETAILS
1/2" = 1'-0"

| DOOR SCHEDULE | | | | | | | | | | | | | | REMARKS |
|---------------|-----------|------------|-------------|---------------|-------------|------------|------------|------------|----------------|--------------|------|------|------|---------|
| DOOR # | DOOR TYPE | DOOR WIDTH | DOOR HEIGHT | DOOR MATERIAL | DOOR FINISH | GLASS SIZE | GLASS TYPE | FRAME TYPE | FRAME MATERIAL | FRAME FINISH | HEAD | JAMB | SILL | |
| 101 | D | 3'-0" | 7'-2" | HM | PAINT | | | 1 | HM | PAINT | H-2 | J-2 | S-1 | |
| 102 | D | 3'-0" | 7'-2" | HM | PAINT | | | 1 | HM | PAINT | H-2 | J-2 | S-1 | |
| 103.1 | D | FR 4'-0" | 7'-10" | HM | PAINT | | | 2 | HM | PAINT | H-2 | J-2 | S-1 | |
| 103.2 | D | FR 4'-0" | 7'-10" | HM | PAINT | | | 2 | HM | PAINT | H-2 | J-2 | S-1 | |
| 121 | B | 3'-0" | 7'-2" | SWC | STAIN | 20 x 36 | | 1 | HM | PAINT | H-3 | J-3 | | |
| 122 | B | 3'-0" | 7'-2" | SWC | STAIN | 20 x 36 | | 1 | HM | PAINT | H-3 | J-3 | | |
| 123 | B | 3'-0" | 7'-2" | SWC | STAIN | 20 x 36 | | 1 | HM | PAINT | H-3 | J-3 | | |
| 124 | B | 3'-0" | 7'-2" | SWC | STAIN | 20 x 36 | | 1 | HM | PAINT | H-3 | J-3 | | |
| 125 | D | 3'-0" | 7'-2" | SWC | STAIN | | | 1 | HM | PAINT | H-3 | J-3 | S-2 | |
| 126 | D | 3'-0" | 7'-2" | SWC | STAIN | | | 1 | HM | PAINT | H-3 | J-3 | S-2 | |
| 127 | D | 3'-0" | 7'-2" | SWC | STAIN | | | 1 | HM | PAINT | H-3 | J-3 | | |
| 128 | D | 3'-0" | 7'-2" | SWC | STAIN | | | 1 | HM | PAINT | H-3 | J-3 | S-3 | |
| 129 | D | 3'-0" | 7'-2" | SWC | STAIN | | | 1 | HM | PAINT | H-3 | J-3 | S-3 | |
| 130.1 | B | 3'-0" | 7'-2" | HM | PAINT | 20 x 36 | | 1 | HM | PAINT | H-4 | J-4 | S-1 | |
| 130.2 | B | 3'-0" | 7'-2" | HM | PAINT | 20 x 36 | | 1 | HM | PAINT | H-4 | J-4 | S-1 | |
| 201 | B | 3'-0" | 7'-2" | HM | PAINT | 20 x 36 | | 1 | HM | PAINT | H-4 | J-4 | S-1 | |
| 202 | B | 3'-0" | 7'-2" | HM | PAINT | 20 x 36 | TEMP. | 1 | HM | PAINT | H-1 | J-1 | S-1 | |



HEAD & JAMB DETAILS
1/2" = 1'-0"



WINDOW TYPES
1/4" = 1'-0"

**Jumper
Carter
Sease**
ARCHITECTS

412 Meeting Street
West Columbia
South Carolina



EMERALD HIGH SCHOOL ADDITIONS
GREENWOOD SCHOOL DISTRICT 50
150 BYPASS 225, GREENWOOD, SC 29646

| No | Description | Date |
|----|-------------|------------|
| 2 | Addendum #2 | 04/25/2023 |

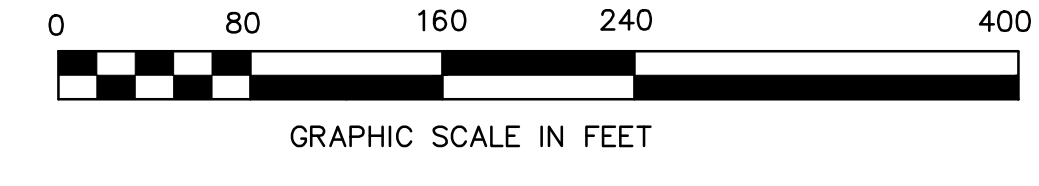
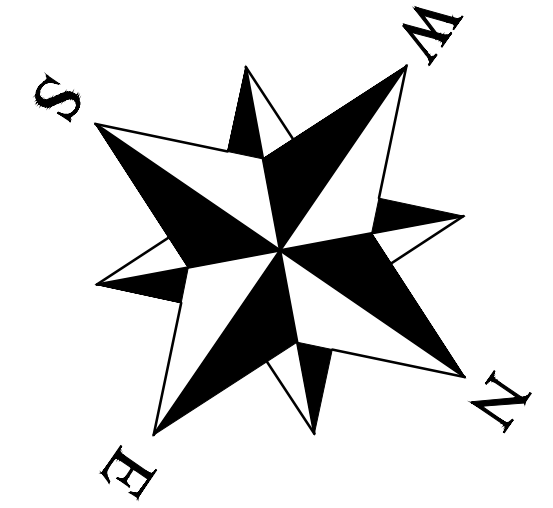
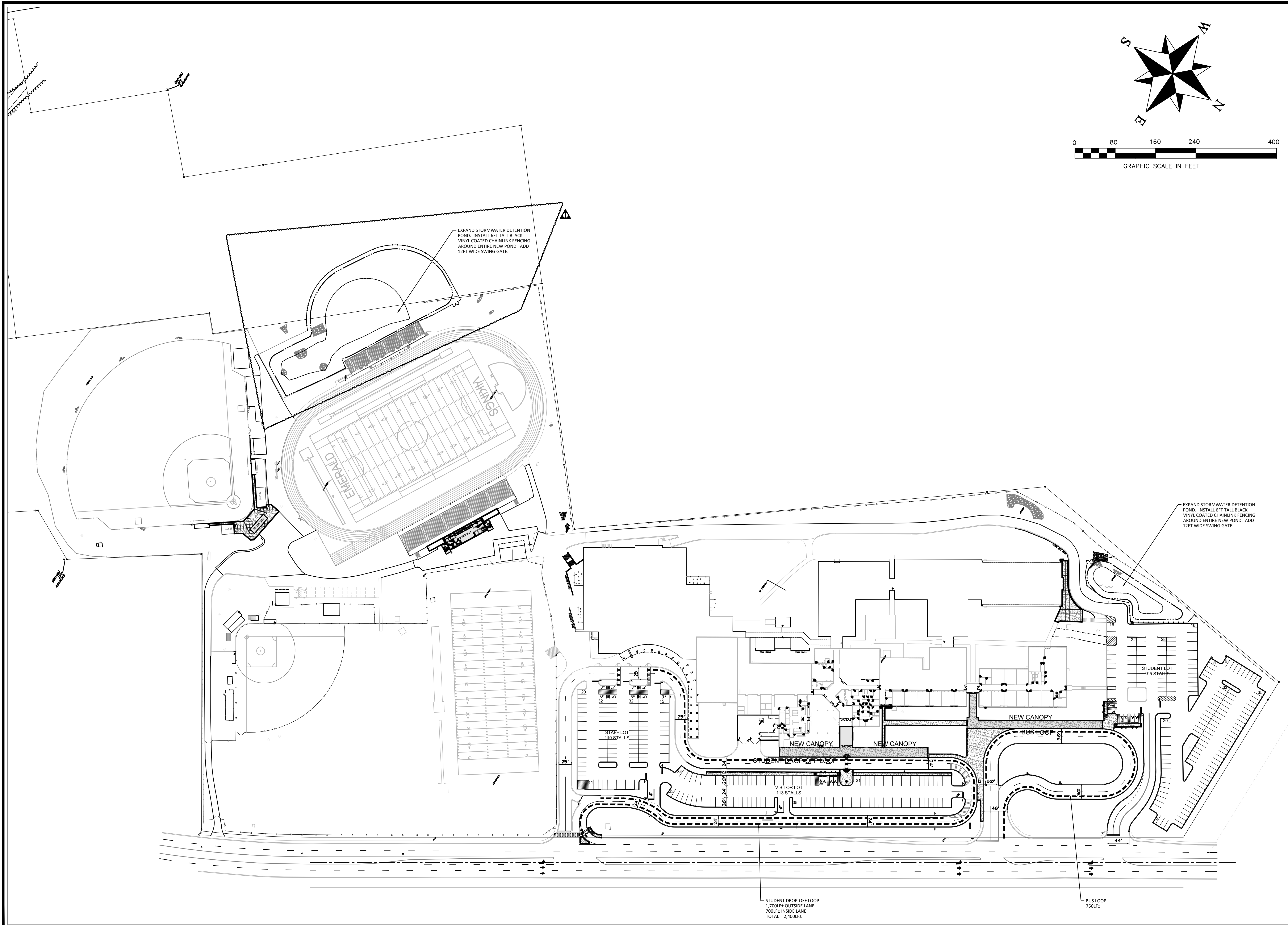
DRAWN BY:
CHECKED BY:

DATE: **MAR 31, 2023**

SHEET TITLE:
ATHLETICS FINISH & DOOR SCHEDULE, DOOR & WINDOW TYPES & DETAILS

SHEET NO:

A502



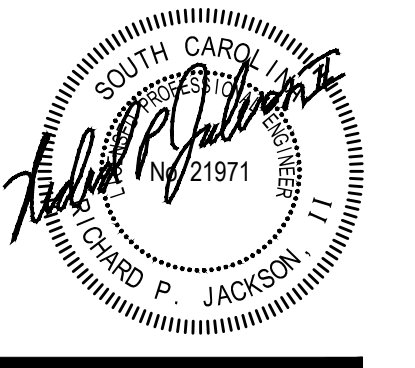
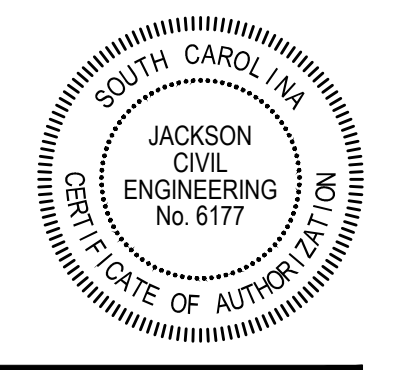
Jumper

Carter

Sease

ARCHITECTS

412 Meeting Street
West Columbia
South Carolina



EMERALD HIGH SCHOOL
SITework IMPROVEMENTS
150 BYPASS 225
GREENWOOD, SC 29646
GREENWOOD SCHOOL DIST FIFTY

| No | Description | Date |
|----|------------------|---------|
| 1 | REV POND & FENCE | 4/24/23 |

CONSTR DOCS

DRAWN BY: RPJ

CHECKED BY: JCE

COMM NO: 2306

DATE: APR 3, 2023

SHEET TITLE:

OVERALL
SITE PLAN

SHEET NO:

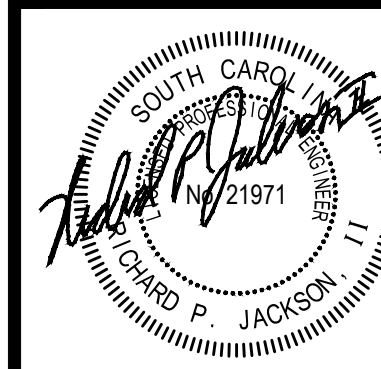
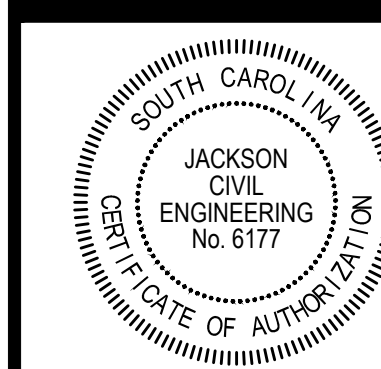
C202

these drawings are the property of Jumper Carter Sease Architects, PA and may not be reproduced, copied or used in whole or in part without written consent of the architect and any infringement will be subject to legal action.

**Jumper
Carter
Sease**

ARCHITECTS

412 Meeting Street
West Columbia
South Carolina



**EMERALD HIGH SCHOOL
SITEWORK IMPROVEMENTS
150 BYPASS 225
GREENWOOD, SC 29646
GREENWOOD SCHOOL DIST FIFTY**

| No | Description | Date |
|----|--------------|---------|
| 1 | DIGITAL SIGN | 4/19/23 |

CONSTR DOCS

DRAWN BY: RPJ

CHECKED BY: JCE

COMM NO: 2306

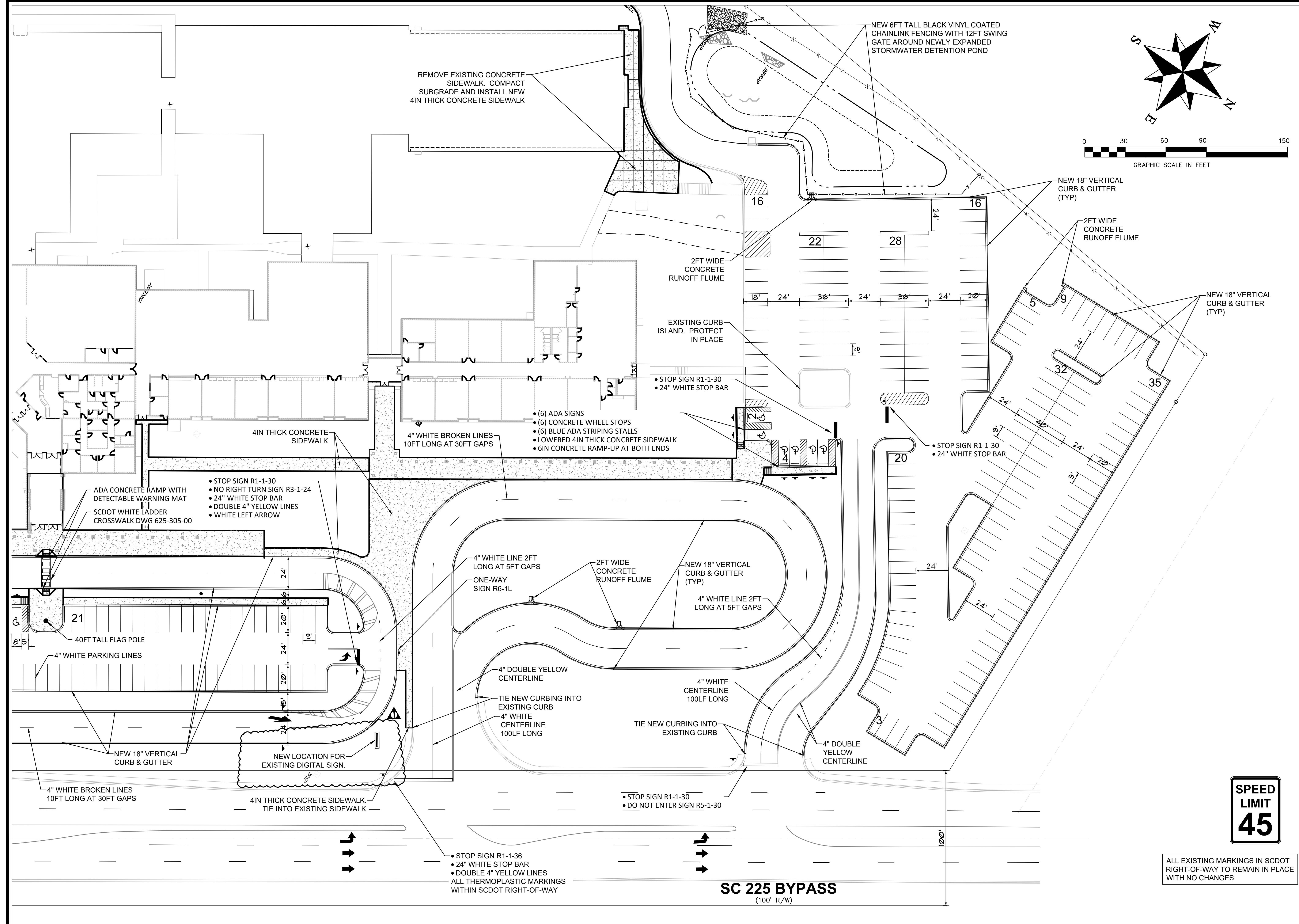
DATE: APR 3, 2023

SHEET TITLE:

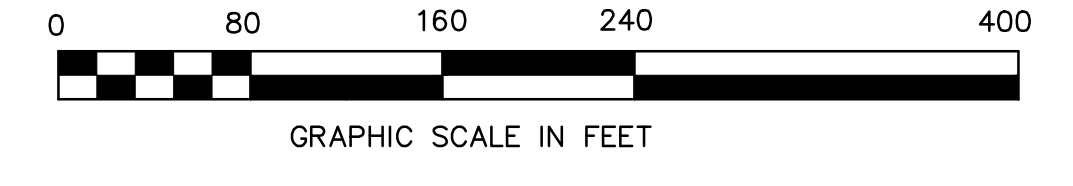
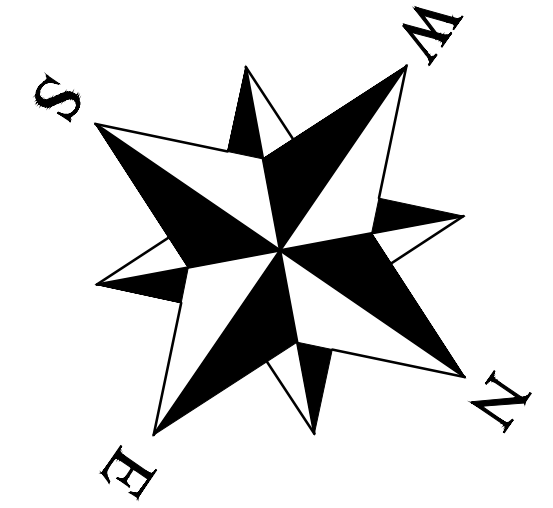
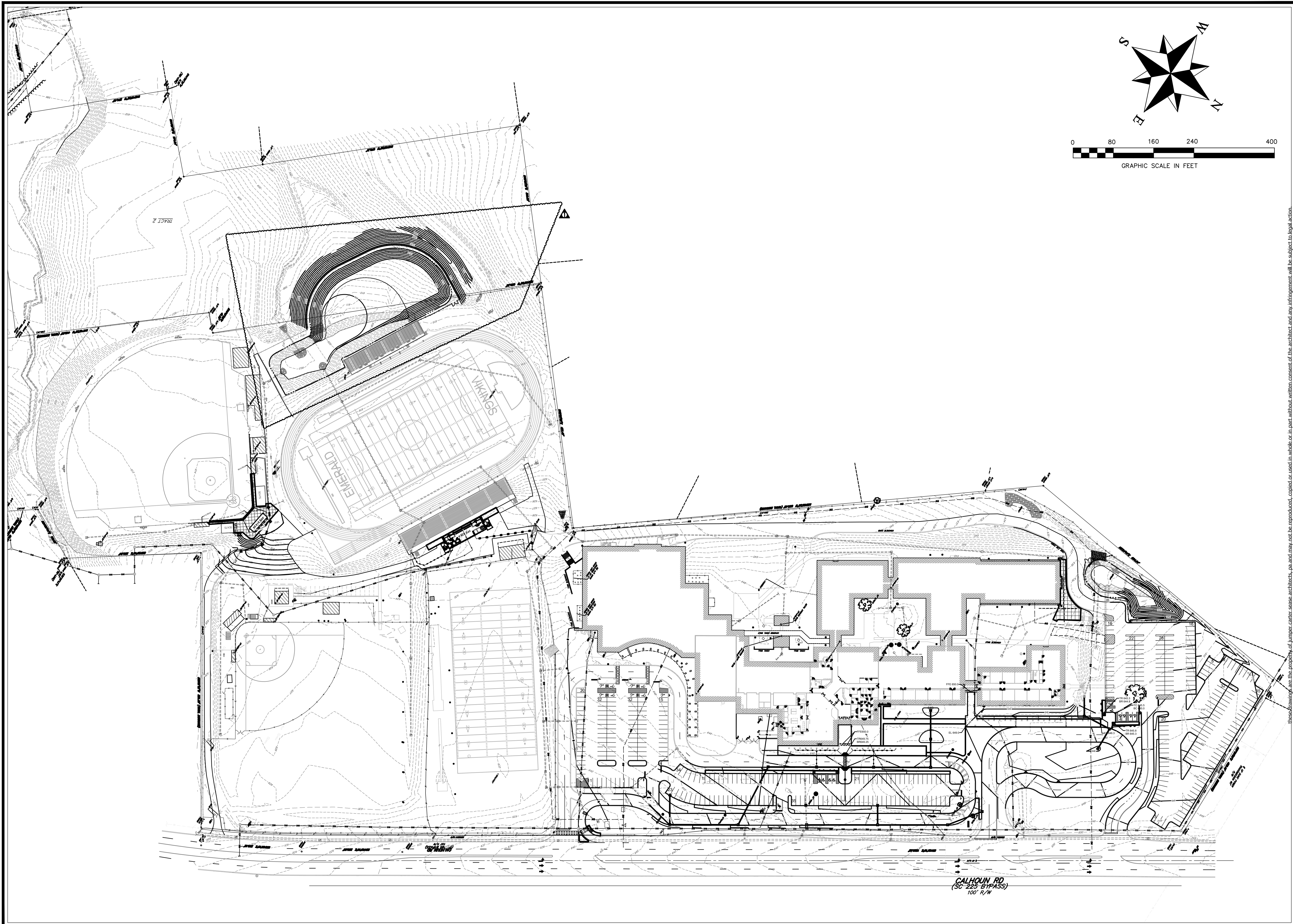
SITE PLAN
AREA 2

SHEET NO:

C204

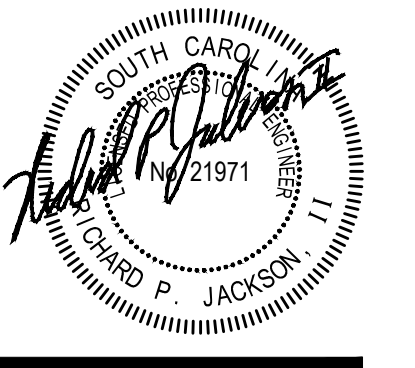
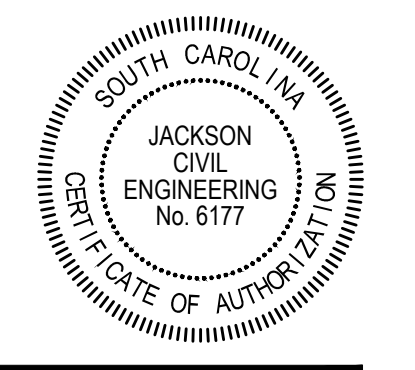


These drawings are the property of Jumper Carter Sease Architects, PA and may not be reproduced, copied or used in whole or in part without written consent of the architect and any infringement will be subject to legal action.



Jumper
Carter
Sease

ARCHITECTS
412 Meeting Street
West Columbia
South Carolina



EMERALD HIGH SCHOOL
SITEWORK IMPROVEMENTS
150 BYPASS 225
GREENWOOD, SC 29646
GREENWOOD SCHOOL DIST FIFTY

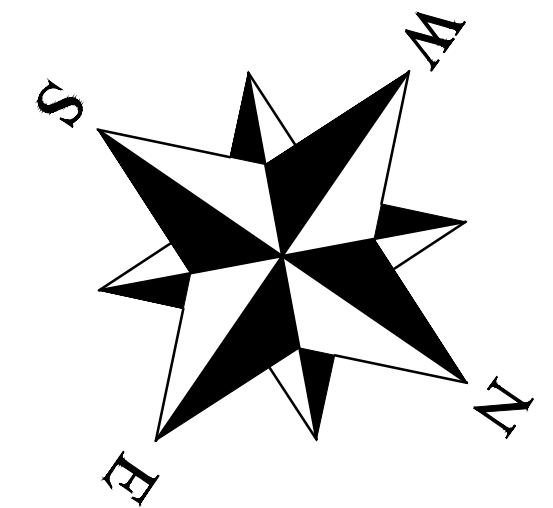
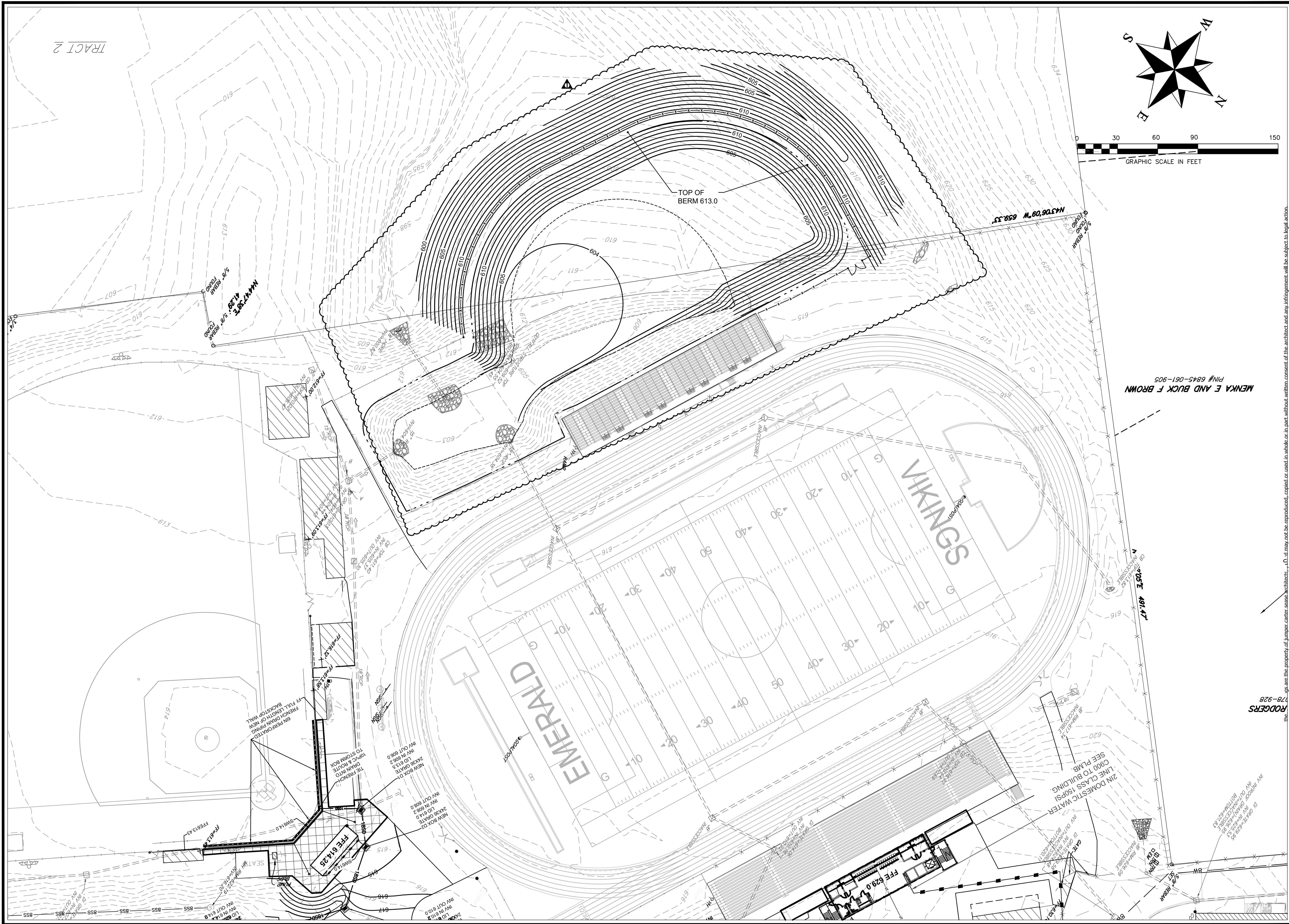
| No | Description | Date |
|----|------------------|---------|
| 1 | REV POND & FENCE | 4/24/23 |
| | | |
| | | |
| | | |

CONSTR DOCS
DRAWN BY: RPJ
CHECKED BY: JCE
COMM NO: 2306
DATE: APR 3, 2023
SHEET TITLE:

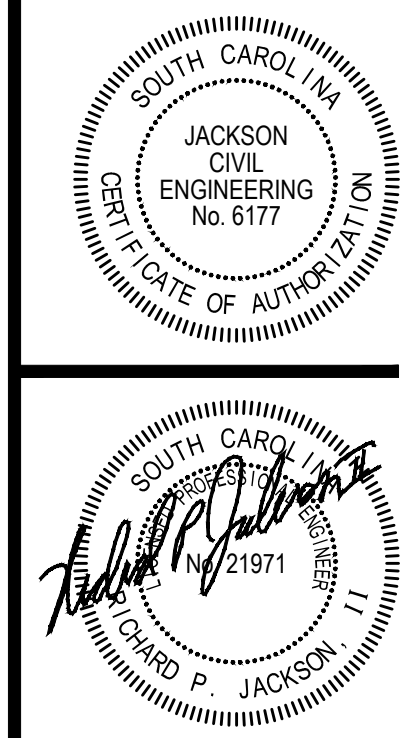
OVERALL
GRADING PLAN
SHEET NO:
C206

These drawings are the property of Jumper Carter Sease Architects, PA and may not be reproduced, copied or used in whole or in part without written consent of the architect and any infringement will be subject to legal action.

CALHOUN RD
(SC 225 BYPASS)
100' R/W



Jumper
Carter
Sease
ARCHITECTS
412 Meeting Street
West Columbia
South Carolina



EMERALD HIGH SCHOOL
SITEWORK IMPROVEMENTS
150 BYPASS 225
GREENWOOD, SC 29646
GREENWOOD SCHOOL DIST FIFTY

| No | Description | Date |
|----|-------------|---------|
| 1 | REV POND | 4/24/23 |

CONSTR DOCS
DRAWN BY: RPJ
CHECKED BY: JCE
COMM NO: 2306
DATE: APR 3, 2023
SHEET TITLE: GRADING PLAN AREA 3
SHEET NO: C209

We are the property of Jumper Carter Sease Architects, LLC. It may not be reproduced, copied or used in whole or in part without written consent of the architect and any infringement will be subject to legal action.
 178-928
RODGERS

MENKA E AND BUCK F BROWN
 PIN# 6845-061-905

TRACT 2

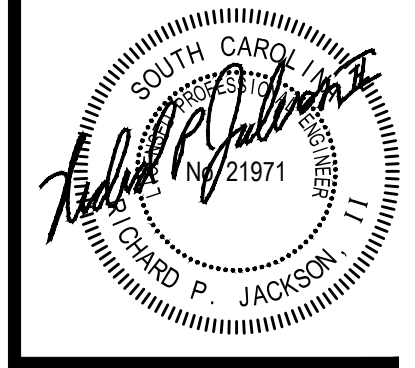
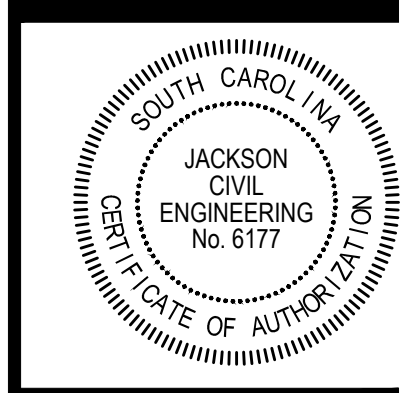
Jumper

Carter

Sease

ARCHITECTS

412 Meeting Street
West Columbia
South Carolina



EMERALD HIGH SCHOOL
SITENETWORK IMPROVEMENTS
150 BYPASS 225
GREENWOOD, SC 29646
GREENWOOD SCHOOL DIST FIFTY

| No | Description | Date |
|----|-------------|---------|
| 1 | REV POND | 4/24/23 |

CONSTR DOCS

DRAWN BY: RPJ

CHECKED BY: JCE

COMM NO: 2306

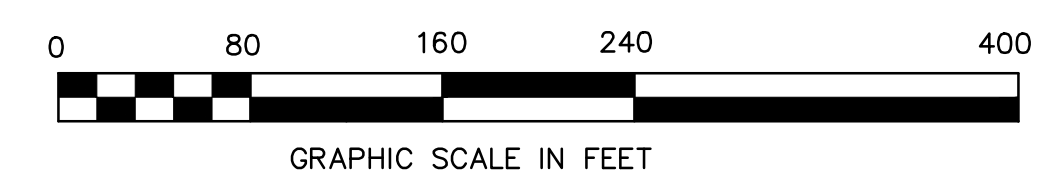
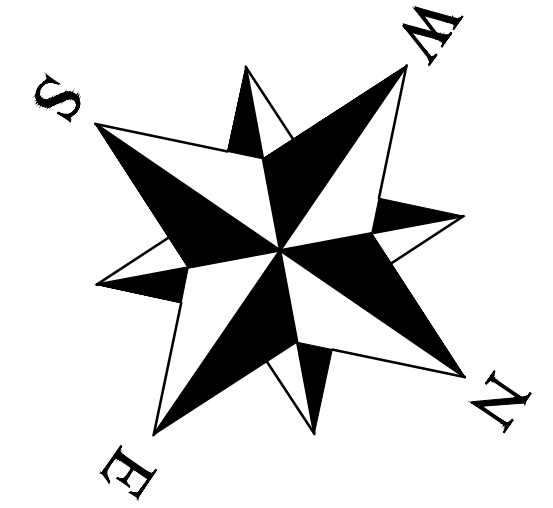
DATE: APR 3, 2023

SHEET TITLE:

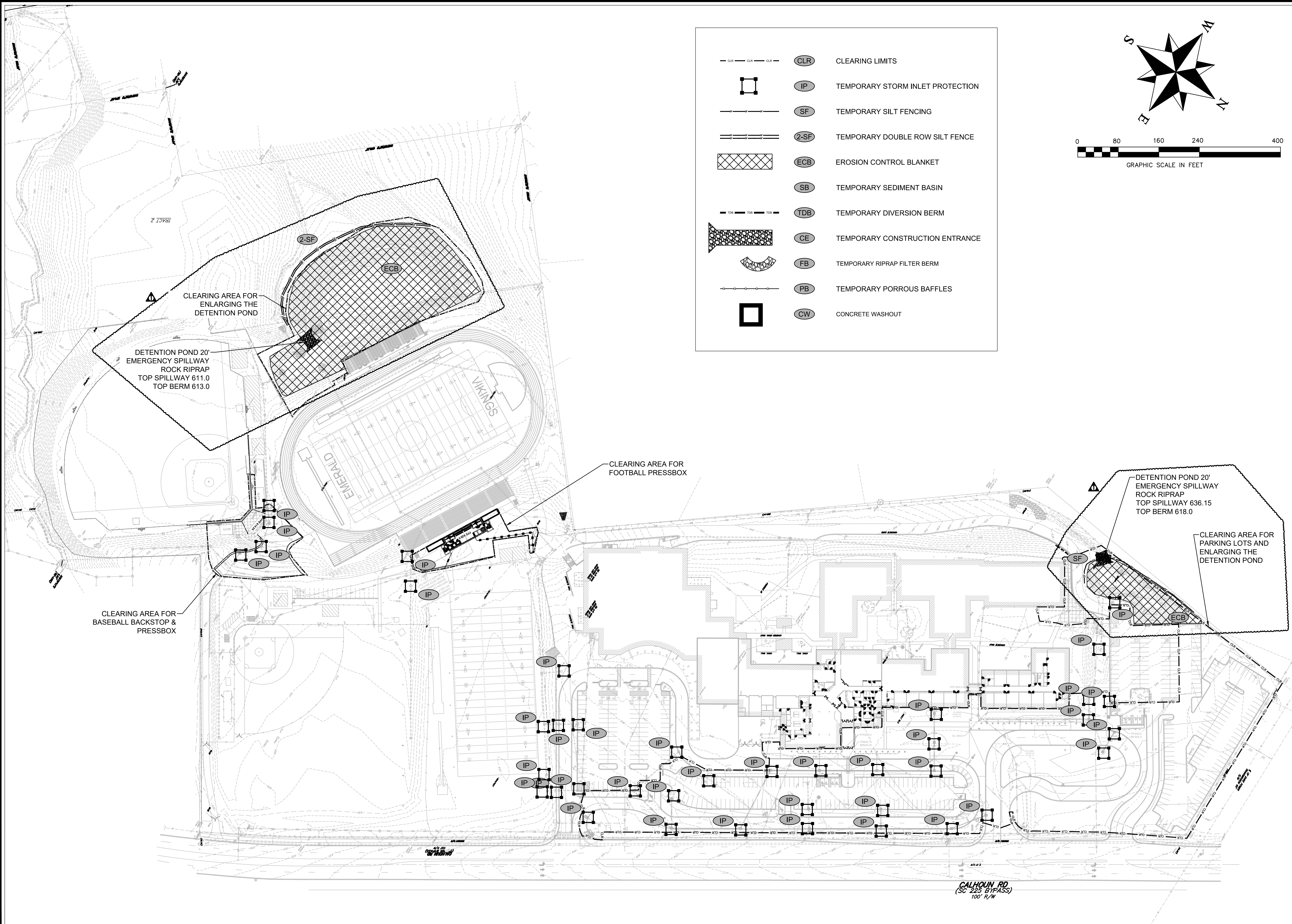
EROSION CONTROL PLAN

SHEET NO:

C212

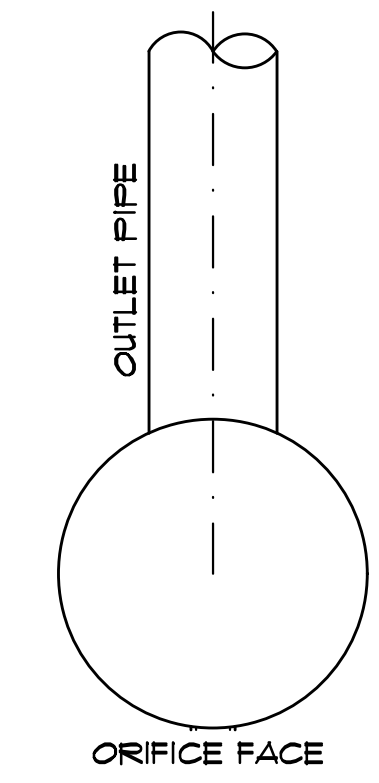
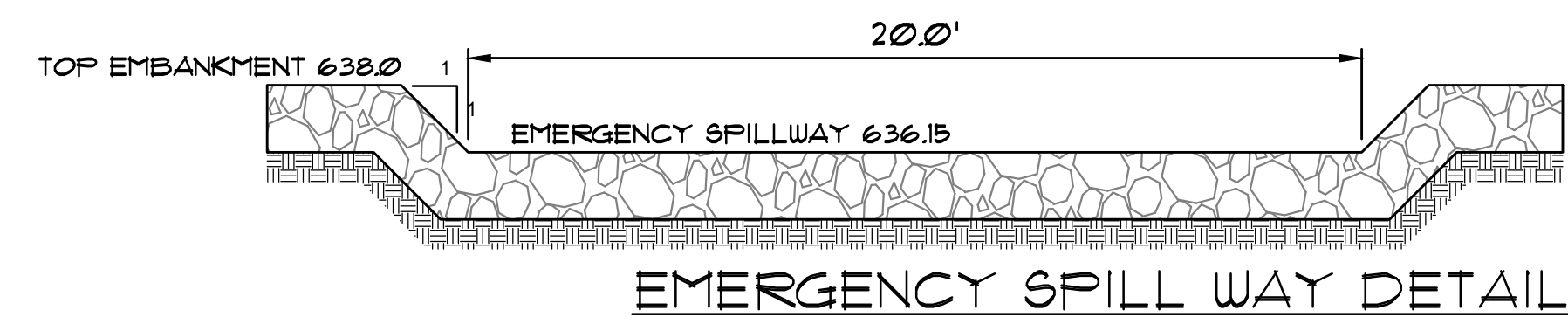
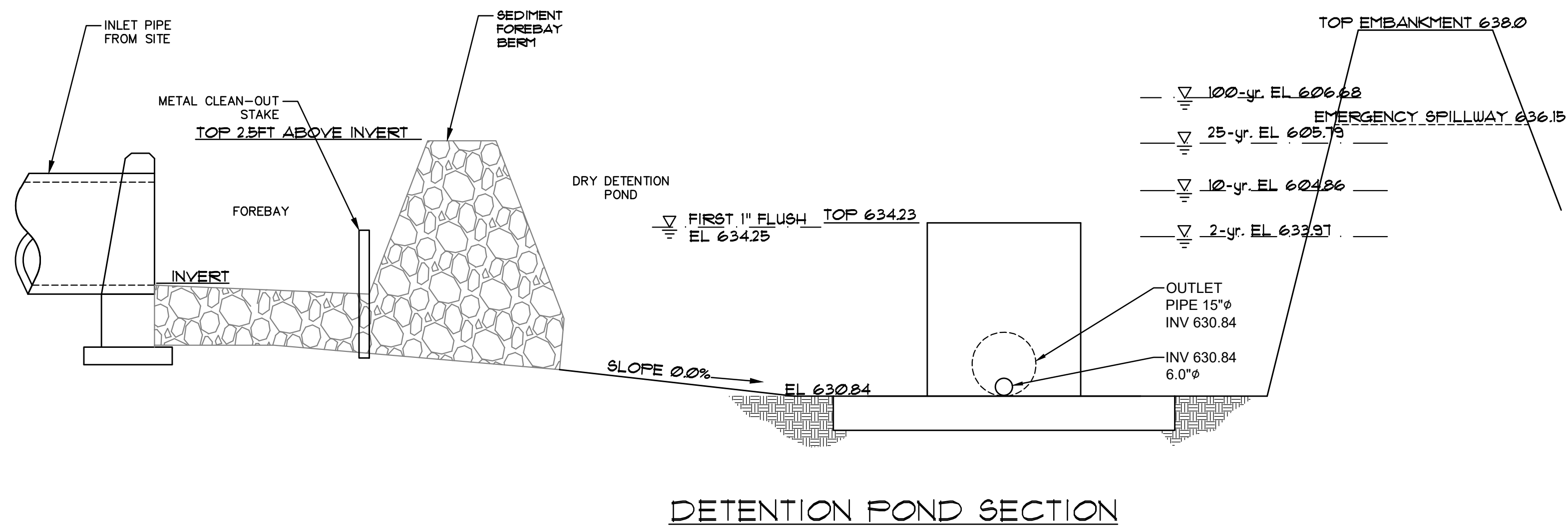


| | | |
|--|------|----------------------------------|
| | CLR | CLEARING LIMITS |
| | IP | TEMPORARY STORM INLET PROTECTION |
| | SF | TEMPORARY SILT FENCING |
| | 2-SF | TEMPORARY DOUBLE ROW SILT FENCE |
| | ECB | EROSION CONTROL BLANKET |
| | SB | TEMPORARY SEDIMENT BASIN |
| | TDB | TEMPORARY DIVERSION BERM |
| | CE | TEMPORARY CONSTRUCTION ENTRANCE |
| | FB | TEMPORARY RIPRAP FILTER BERM |
| | PB | TEMPORARY PORROUS BAFFLES |
| | CW | CONCRETE WASHOUT |



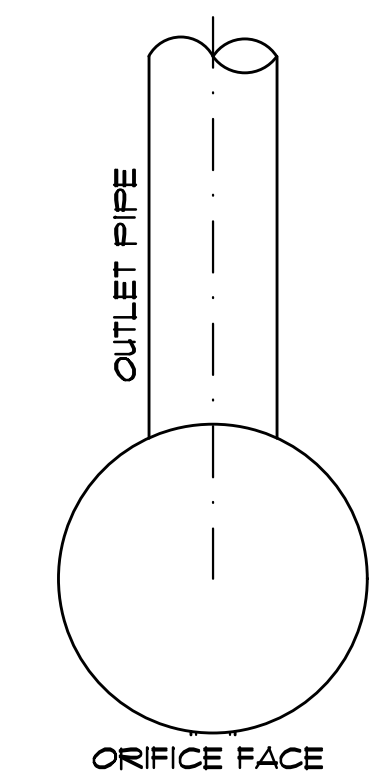
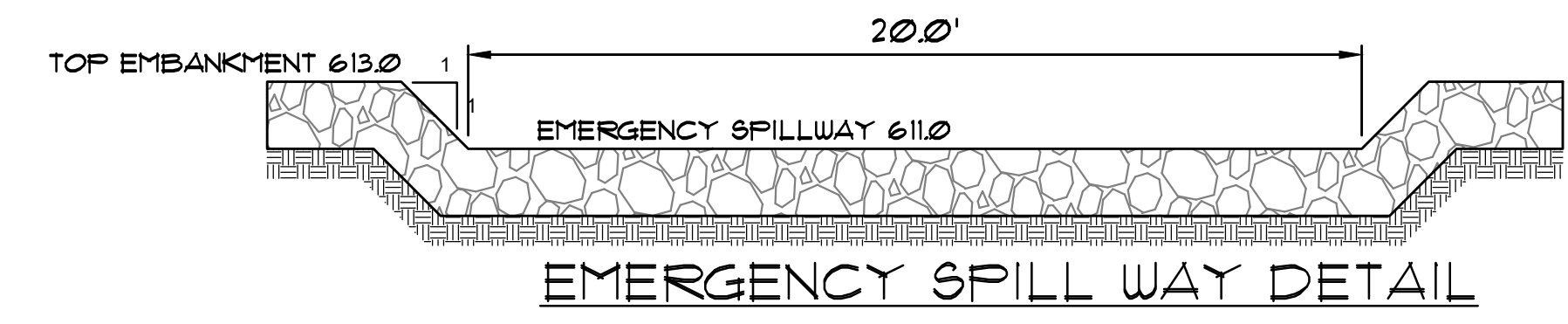
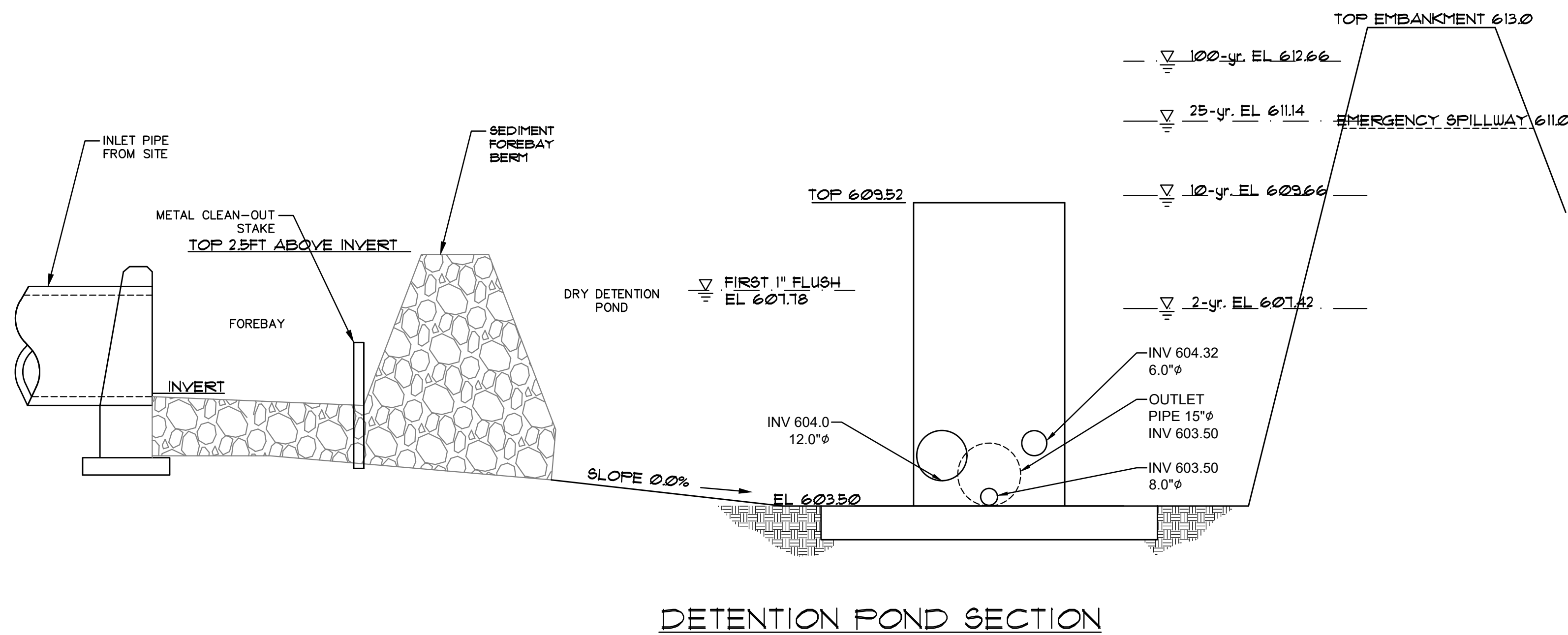
These drawings are the property of Jumper Carter Sease Architects, P.A. and may not be reproduced, copied or used in whole or in part without written consent of the architect and any infringement will be subject to legal action.

POND A - STUDENT PARKING LOT



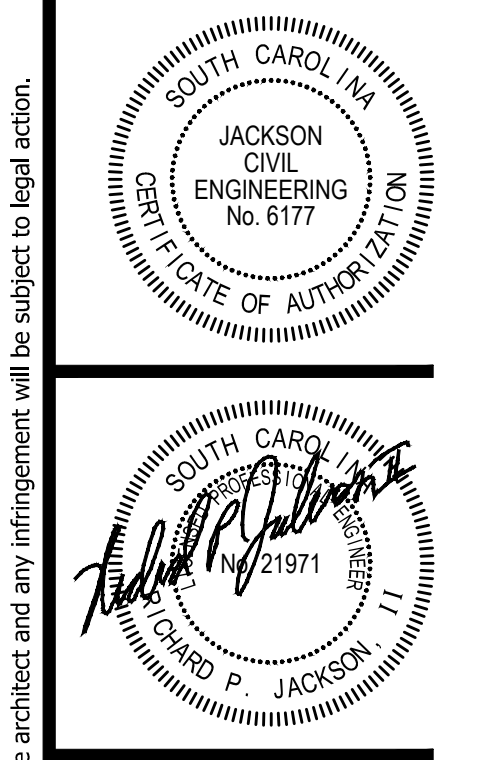
PLAN VIEW - OUTFALL STRUCTURE

POND B - REAR PROPERTY



PLAN VIEW - OUTFALL STRUCTURE

Jumper
Carter
Sease
ARCHITECTS
412 Meeting Street
West Columbia
South Carolina



EMERALD HIGH SCHOOL
SEWERAGE IMPROVEMENTS
150 BYPASS 225
GREENWOOD, SC 29646
GREENWOOD SCHOOL DIST FIFTY

| No | Description | Date |
|----|-------------|---------|
| 1 | POND MODS | 4/25/23 |

CONSTR. DOCS
DRAWN BY: RPJ
CHECKED BY: JCS
COMM NO: 2306
DATE: APR 3, 2023

SHEET TITLE: STORM DETAILS
SHEET NO: C306

these drawings are the property of Jumper Carter Sease Architects, PA and may not be reproduced, copied or used in whole or in part without written consent of the architect and any infringement will be subject to legal action.