

Patten Parkway Pedestrian Plaza

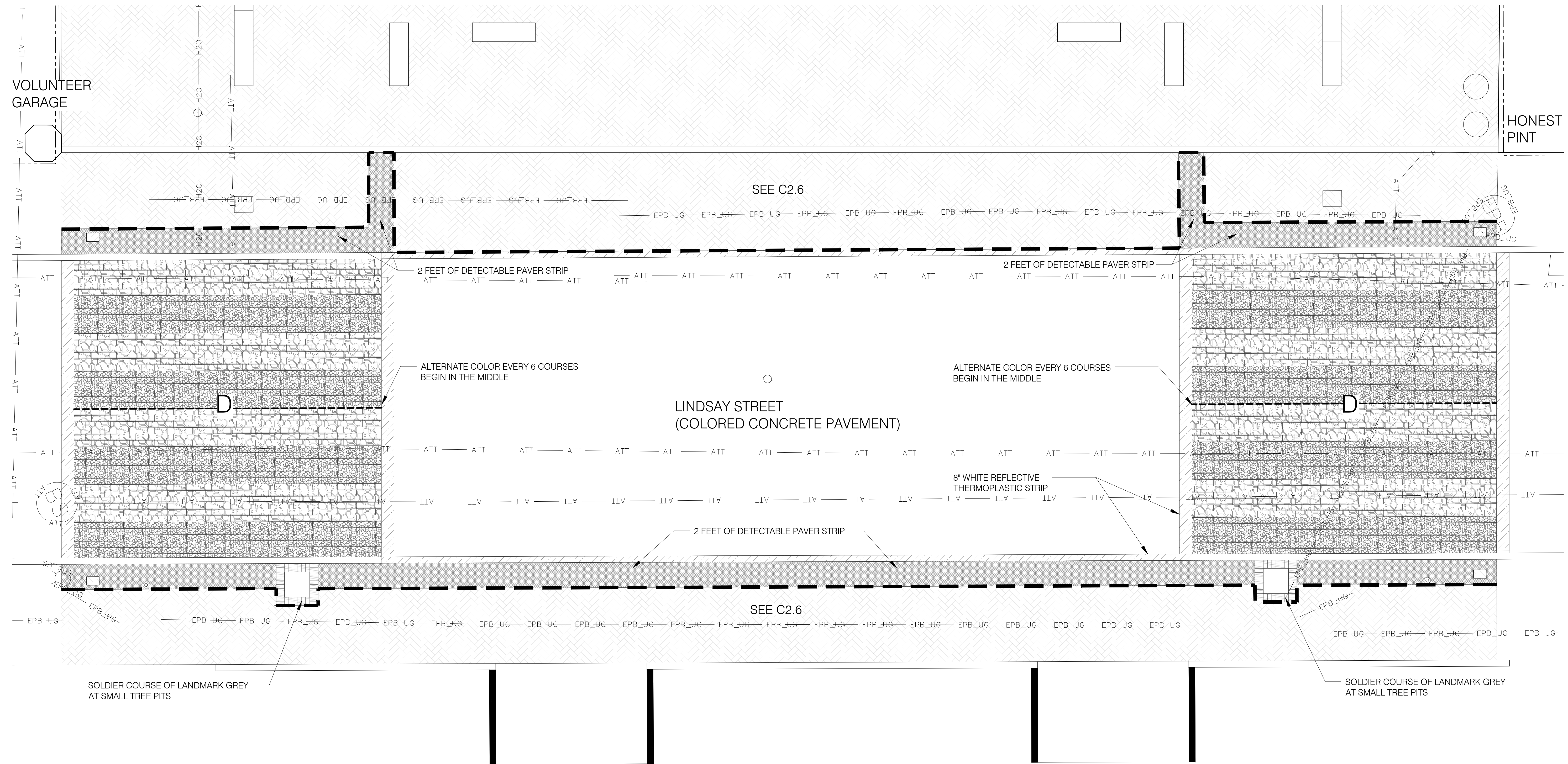
Contract Number: D-17-019-201

Chattanooga Department of Transportation

- 1. Attached is the sign-in sheet for the pre-bid meeting**
- 2. Attached is Sheet C2.8 for additional clarification on the Lindsay Street intersection**
- 3. Question: *We would like to know the footages of the pipe***
 - a. Quantities are provided in the bid schedule
 - i. Line Item No. 26 – 266 linear feet of perforated wall drain
 - ii. Line Item No. 27 – 724 linear feet of 4” perforated pipe
 - iii. Line Item No. 29 – 187 linear feet of 15” RCP
- 4. Question: *Can concrete be an alternate bid for Roller Compacted Concrete?***
 - a. Yes, this will be add alternate #1
- 5. Question: *Can Line Item No. 33 unit for concrete bands be changed from SF to LF?***
 - a. Yes, please change Line Item No. 33 unit to Linear Feet. Total length: 42
- 6. Question: *Please provide foundation drawing for art work.***
 - a. Attached is the preliminary foundation plans for the art work provided by the artist.
- 7. Question: *Please provide technical specification section 01090 Abbreviations***
 - a. See attached

RFQ PATTEN Pkwy 3/7/2019

<u>NAME</u>	<u>COMPANY</u>	<u>PHONE#</u>	<u>EMAIL</u>
MATTHEW SNYDER	CDOT	423-643-5967	MSNYDER@CHATTANOOGA.GOV
MICHAEL MCBRAYOR	THOMAS BROTHERS	423-508-4888	MIKE@TBCLINC.NET
MIKE DAVIS	P&C Construction	423-417-1330	mdavis@pc-const.com
STEVE DOVER	DILLARD	423-634-9959	SDOVER@DILLARDCONSTRUCTION.COM
Ryan Wang	WMWA	805-215-5074	rwang@wmwalia.com
Matt Whitaker	WMWA	423-551-3800	mw@wmwalia.com
Michael Williams	Chris Paty Const.	423-779-6863	chrispatyconstruction@gmail.com
ALLEN JONES	ASA	423-805-3700	ajones@asaengineeringinc.com
Tim Fountain	Talley	423-364-9814	Tfountain@TalleyConstruction.NET
WES BOND	TUTTARKS	423-648-3809	w.bond@TUTTARKS.COM
Seth Williams	Yerbey Concrete	423-805-3863	Swilliams@yerbey.com
Cony Hollinghead	ASA	423-260-6713	chollinghead@asaengineeringinc.com
Debbie Talley	City	423-643-7230	dtalley@chattanooga.gov
MARK HEINZER	CDOT	423-643-6023	mheinzer@chattanooga.gov



ZONE D: CROSSWALK ASPHALT PAVER

PAVER TYPE			
	NAME	MANUFACTURER	DIMENSION
	A80016*	HANOVER ARCHITECTURAL PRODUCTS	6' X 12"
	A80033*	HANOVER ARCHITECTURAL PRODUCTS	6' X 12"

* SUBMIT FOR VERIFICATION.

8" WHITE REFLECTIVE THERMOPLASTIC STRIP

PAVING PLAN

PATTEN PARKWAY

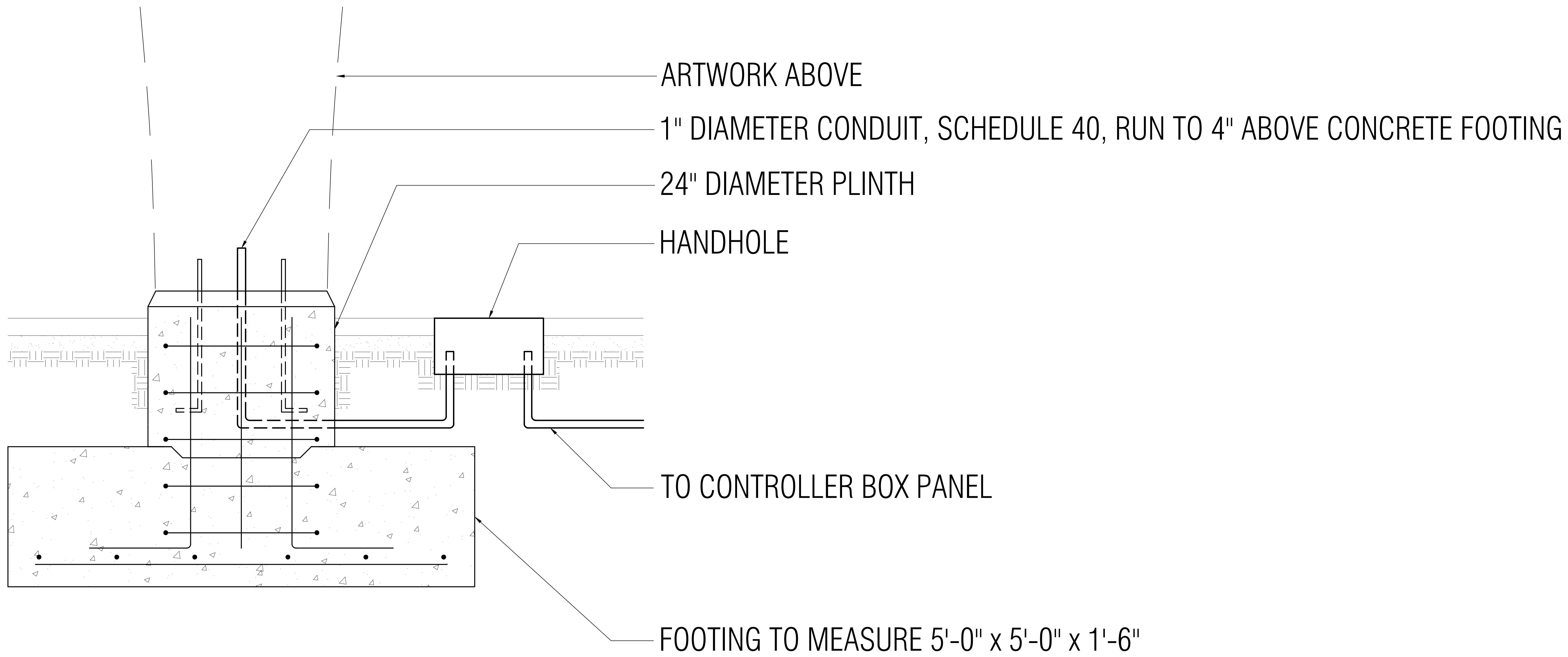
PATTEN PKWY, CHATTANOOGA, TN, 37402

No.	Revision/Issue	Date

PROJECT NO. 17-0173
 DATE 02.01.2019
 SCALE AS SHOWN
 DESIGNED BY ASA / WMW
 DRAWN BY ASA / WMW
 CHECKED BY ASA / WMW



C2.8



SECTION 01090 ABBREVIATIONS

1.01 GENERAL

Wherever in these Specifications and Contract Documents the abbreviations, or pronouns in place of them are used, the intent and meaning shall be interpreted as specified herein.

1.02 ABBREVIATIONS

AA	-	Aluminum Association
AAMA	-	Architectural Aluminum Manufacturer's Association
AASHTO	-	American Association of State Highway and Transportation Officials
ACI	-	American Concrete Institute
ACPA	-	American Concrete Pipe Association
AEIC	-	Association of Edison Illuminating Companies
AFBMA	-	Anti-Friction Bearing Manufacturers Association
AGA	-	American Gas Association
AGMA	-	American Gear Manufacturers Association
AIA	-	American Institute of Architects
AIEE	-	American Institute of Electrical Engineers
AISC	-	American Institute of Steel Construction
AITC	-	American Institute of Time Construction
ANSI	-	American National Standards Institute
AMCA	-	Air Moving and Conditioning Association
APA	-	American Plywood Association
APHA	-	American Public Health Association
API	-	American Petroleum Institute
APWA	-	American Public Works Administration
ARC	-	Appalachian Regional Commission
AREA	-	American Railroad Engineering Association
ASA	-	American Standards Association
ASCE	-	American Society of Civil Engineers
ASHRAE	-	American Society of Heating, Refrigeration, and Air Conditioning Engineers
ASME	-	American Society of Mechanical Engineers
ASTM	-	American Society for Testing and Materials
AWS	-	American Welding Society
AWWA	-	American Water Works Association
CFR	-	Code of Federal Regulations
CRSI	-	Concrete Reinforcing Steel Institute
CTI	-	Cooling Tower Institute
DEMA	-	Diesel Engine Manufacturers Association
EDA	-	Economic Development Administration
EPA	-	Environmental Protection Agency
FmHA	-	Farmers Home Administration
FS	-	Federal Specifications
HEI	-	Heat Exchange Institute

IEEE	-	Institute of Electronic and Electrical Engineers
IES	-	Illuminating Engineering Society
IPCEA	-	Insulated Power Cable Engineers Association
IPC	-	Institute of Printed Circuits
ISA	-	Instrument Society of America
MBMA	-	Metal Building Manufacturers Association
MSS	-	Manufacturers Standardization Society of the Valve and Fitting Industry
MUTCD	-	Manual on Uniform Traffic Control Devices
NAAMM	-	National Association of Architectural Metal Manufacturers
NACE	-	National Association of Corrosion Engineers
NBFU	-	National Board of Fire Underwriters
NBS	-	National Bureau of Standards
NCPI	-	National Clay Pipe Institute
NEC	-	National Electric Code
NEMA	-	National Electrical Manufacturers Association
NFPA	-	National Fire Protection Association
NRMA	-	National Ready-Mix Association
OSHA	-	Occupational Safety and Health Administration
PCA	-	Portland Cement Association
PCI	-	Prestressed Concrete Institute
SBC	-	Southern Building Code
SMACNA	-	Sheet Metal and Air Conditioning Contractors National Association
SSPC	-	Steel Structures Painting Council
TCA	-	Tile Council of America
TDEC	-	Tennessee Department of Environment and Conservation
TEMA	-	Tubular Exchangers Manufacturers Association
UBC	-	Uniform Building code
UL	-	Underwriters Laboratories
USDC	-	United States Department of Commerce
WBCF	-	Water Pollution Control Federation

END OF DOCUMENT