



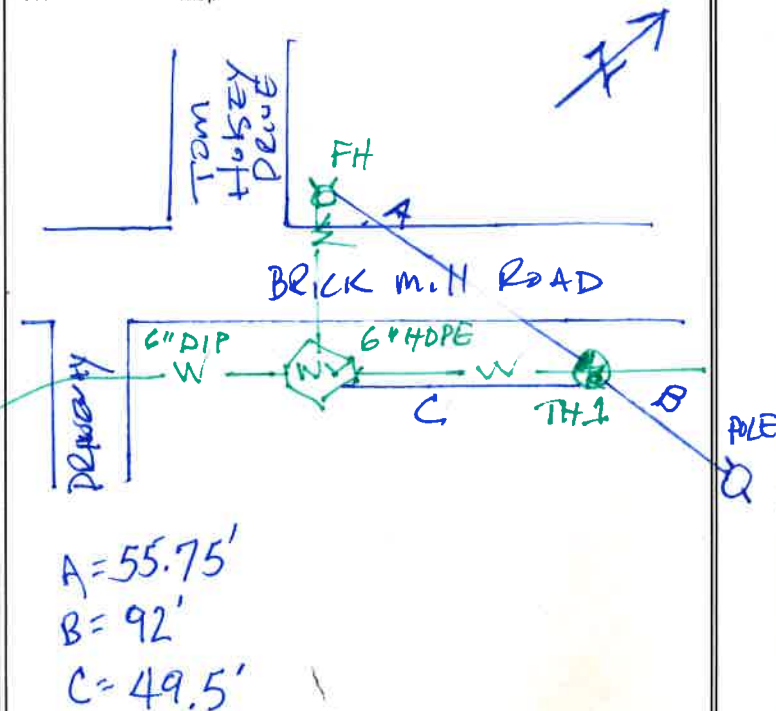
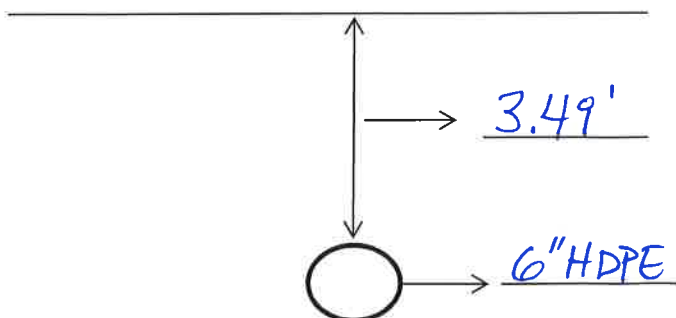
Geophysics LLC

VACUUM EXCAVATION TEST HOLE REPORT

PROJECT NUMBER: SOEN00117		TEST HOLE NUMBER: 1	
CLIENT NAME: Southeastern Engineering		SOIL TYPE: SANDY CLAY	
PROJECT TITLE: Water Main Test Hole		SURFACE MATERIAL: GRASS	
LOCATION: Cherokee County, GA		PAVEMENT TYPE: N/A	
DATE: 08/15/2017		PAVEMENT THICKNESS: N/A	
UTILITY #:	1	UTILITY #:	
TYPE:	PVC WATER	TYPE:	
OWNER:	CHEROKEE CO.	OWNER:	
SIZE:	6"	SIZE:	
MATERIAL:	PVC	MATERIAL:	
DEPTH:	3.49'	DEPTH:	
DIRECTION:	N35°E 535°W	DIRECTION:	
UTILITY #:		UTILITY #:	
OWNER:		OWNER:	
TYPE:		TYPE:	
SIZE:		SIZE:	
MATERIAL:		MATERIAL:	
DEPTH:		DEPTH:	
DIRECTION:		DIRECTION:	
		SITE PERSONNEL: JRT, NDR, KAT	
		METHOD USED: VACUUM EXCAVATION	
OTHER NOTES:			
		SURVEY PROVIDED BY:	
		SURVEY COORDINATES:	
		ELEVATION:	
		NORTH:	
		EAST:	

Notes: All measurements obtained from top/center of associated utility unless otherwise noted.

Test Hole Location Map



GEL GEOPHYSICS, LLC

a Member of THE GEL GROUP, INC.

821 Livingston Court, Suite E • Marietta, GA 30067

Phone (770) 980-1002 • Fax (770) 980-1004 • www.gel.com