



## City of Chattanooga

Mayor Andy Berke

September 7, 2018

Contract T-18-008-201 – City Resurfacing - Addendum #2

### I. QUESTIONS

1. Mobilization (I think should be added since Davidson is an alternate) this would be another item in the alternate items
  - Replace Section 301-2R1 with Section 301-2R2
2. Traffic Control (I think should be added since Davidson is an alternate) this would be another item in the alternate items
  - Replace Section 301-2R1 with Section 301-2R2
3. Looks like Davidson is 15 foot wide presently, we need guidance on how traffic is going to be handled, there is widening on both sides of Davidson, are we going to shut down and detour Davidson?
  - It is anticipated that due to the current width of Davidson, at a minimum, a lane closure will be required. CDOT will schedule a meeting with the lowest apparent bidder to determine if there is a need for a full closure during construction.
4. The typical section shows 8" of base stone going in on the widening section there is no pay item for base stone
  - Replace Section 301-2R1 with Section 301-2R2
5. If Davidson is to be detoured we need a detour route to be able to properly bid the traffic control requirements.
  - If a full closure is warranted, the detour would be to Dudley Road and back. Traffic control would include setup, maintenance, adjustment and removal of all detour signs, barricades and advance warning signs necessary to detour traffic around this one block stretch of work. See Appendix C.

6. The plans do not show what is going to be done at both ends of the Davidson Dr. at the intersection roads (i.e. the curb area at the intersection with Julian). We need clarification on this.

- See Appendix D for the approximate layout for the new edge of pavement

7. Separate sealed bids for furnishing all supervision, materials, labor, tools, equipment, and appliances necessary for the construction of the following described project, will be received by the City of Chattanooga at City Hall, Purchasing Department, Suite G13, located at 101 E. 11<sup>th</sup> Street, Chattanooga, TN 37402, until **2:00 p.m., local time, on THURSDAY, SEPTEMBER 13, 2018.**

# T-18-006-201 - 2018 Resurfacing Contract

ITEM	DESCRIPTION	QUANTITY	UNIT OF MEASURE	UNIT PRICE	TOTAL
75	Cold Planing Bituminous Pavement (1½-inches Typical Depth)	30000	SY	\$	\$
717	Mobilization	1	LS	\$	\$
12.a	Asphalt Surfacing (¾-inch Nominal Aggregate Size WMA JMF In-Place) ("E"-mix) including tack coat	15000	TON	\$	\$
12.b	¾-inch Average Thickness Thin Lift (¾-inch Nominal Aggregate Size WMA JMF (Complete-In-Place) (THIN LIFT) (INCLUDES TACK COAT)	1500	TON	\$	\$
12.c	4- to 8-inch Base Repairs (1½-inch Nominal Aggregate Size WMA JMF (Complete-In-Place) (Binder-mix) including tack coat as required	4500	TON	\$	\$
12.d	Asphalt Binder Course Mix Design (1½-inch Nominal Aggregate Size WMA JMF Complete-In-Place) ("E" mix) including tack coat as required	2500	TON	\$	\$
12.e	Asphalt Surfacing (¾-inch Nominal Aggregate Size WMA JMF In-Place) ("D"-mix) including tack coat	1100	TON	\$	\$
16.d.1	Installation of ADA Compliant Curb Ramp (Complete-in-Place including demolition and removal of existing ramp, layout, construction, installation of Standard Truncated Dome Composite Inlay.)	20	EA	\$	\$
33.04.a	Adjustment of Existing Sanitary Sewer Manholes	150	EA	\$	\$
33.04.b	Adjustment of Existing Catch Basins	20	EA	\$	\$
33.04.c	Lowering of Existing Manholes prior to milling	100	EA	\$	\$
33.04.d	Excess manhole adjustment	50	VI	\$	\$
33.04.e	Procurement, Transportation, and Installation of Manholes, Manhole Lids, and Frames - (Complete-In-Place) (Mueller Model AJ633 or approved equal)	20	EA	\$	\$
RCP	Base Repairs (Aggregate Cement Base In-Place)	225	TON	\$	\$
TDOT Section 712	Traffic Control	1	LS	\$	\$
TDOT Section 716	Temporary Striping	8	LM	\$	\$
TDOT Section 716-02.03	Pavement Marking (Continental Cross Walk-City Standard) Complete-in-Place	240	LF	\$	\$
TDOT Section 716-02.04	Pavement Marking (Channelization Striping) Complete-in-Place	100	SY	\$	\$
TDOT Section 716-02.05	Pavement Marking (Stop Line) Complete-in-Place	1200	LF	\$	\$
TDOT Section 716-02.06	Pavement Marking (Turn Line Arrow) Complete-in-Place	10	EA	\$	\$
TDOT Section 716-03.02	Pavement Marking (Railroad Crossing) Complete-in-Place	2	EA	\$	\$

ITEM	DESCRIPTION	QUANTITY	UNIT OF MEASURE	UNIT PRICE	TOTAL
TDOT Section 716-03.04	Pavement Marking (School Crossing) Complete-in-Place	4	EA	\$	\$
TDOT Section 716-04.05	Pavement Marking (Straight Arrow) Complete-in-Place	20	EA	\$	\$
TDOT Section 716-04.11	Pavement Marking (Bicycle Symbol) Complete-in-Place	32	EA	\$	\$
TDOT Section 716-04.12	Plastic Pavement Marking (Yield Line)	100	SF	\$	\$
TDOT Section 716-06.02	Preformed Plastic Pavement Marking (Green)	120	SF	\$	\$
TDOT Section 716-06.03	Plastic Pavement Marking (6 INCH DOTTED LINE) (CATTRACKS)	150	LF	\$	\$
TDOT Section 716-06.05	PREFORMED PLASTIC PAVEMENT MARKING (BIKE SYMBOL w/GREEN CONTRAST)	6	EA	\$	\$
TDOT Section 716-06.06	PREFORMED PLASTIC PAVEMENT MARKING (ARROW w/GREEN CONTRAST)	6	EA	\$	\$
TDOT Section 716-06.07	PREFORMED PLASTIC PAVEMENT MARKING (SHARROW)	30	EA	\$	\$
TDOT Section 716-06.08	PREFORMED PLASTIC PAVEMENT MARKING (BIKE SYMBOL w/CHEVRON)	20	EA	\$	\$
TDOT Section 716-06.09	PREFORMED PLASTIC PAVEMENT MARKING (6 INCH DOTTED LINE)	100	SF	\$	\$
TDOT Section 716-08.32	Hydroblast removal of pavement marking	950	LF	\$	\$
TDOT Section 716-13.01	Thermoplastic Pavement Marking (4-inch wide lines, 60 mil min.)	10	LM	\$	\$
TDOT Section 716-13.02	Thermoplastic Pavement Marking (6-inch wide lines, 60 mil min.)	6	LM	\$	\$
TDOT Section 730	Signal Loop Installation (Includes Wire, Saw Cutting, Installing, and Sealing, etc.) - Complete-In-Place	20	EA	\$	\$

**Total Base Bid \$**

ITEM	DESCRIPTION	QUANTITY	UNIT OF MEASURE	UNIT PRICE	TOTAL
------	-------------	----------	-----------------	------------	-------

## ALTERNATE A

1-a	12" excavation for widening	152	CY	\$	\$
1-d	12" trench cutting within tree root zone	300	LF	\$	\$
1-e	Subgrade compaction	456	SY	\$	\$
12-f	Asphalt Driveway Pad - Includes 6" Mineral aggregate base (Type 'A', Grading "D"), 2" Grading 'E' Topping, per SD-703.01 (Complete-in-place).	800	SF	\$	\$
14-a	Mineral Aggregate Base Type "A", Grading "D", 8-inch depth, (Complete in Place)	200	TONS	\$	
15-e	Demolition and Removal of Existing Concrete/Asphalt Roadway (Complete-in-place).	2,000	SF	\$	\$
16-d.2	Concrete Driveway Apron and/or Sidewalk, 6-inch thick (SD-202.02)- Includes Class "A" Concrete, Excavation up to 8-inch Depth, Base Stone, Reinforcing Steel, etc. (Complete-in-Place).	1,200	SF	\$	\$
19-a	Tree and/or Stump Removal, 4-inch - 12-inch Diameter (Complete-in-place).	4	EA	\$	\$
31-f	12-inch Reinforced Concrete Pipe - Includes excavation (up to 6-foot depth), bedding, backfill, stone, labor, other incidentals, etc., SD-700.01 (Complete-in-Place).	180	LF	\$	\$
35-b	Permanent Seeding - Includes all Labor, Fertilizer, Straw and other incidentals, etc. (Complete-in-place).	550	SY	\$	\$
98-a	Erosion Control Inlet Protection - Silt-Saver, Siltsack, Gutterbuddy, or as directed by Engineer, (Complete-in-Place).	2	EA	\$	\$
717	Mobilization	1	LS	\$	\$
TDOT Section 712	Traffic Control	1	LS	\$	\$
MISC-E	Mailbox Relocation/Installation - Includes the removal & disposal of the existing mailbox, post, & footing, the installation of the new mailbox, post, & footing. Includes mailbox, post, hardware, vinyl letters, excavation & concrete for footing (Complete-in-Place)	9	EA	\$	\$

Total Alternate A Bid \$

Total Base plus Alternate A Bid \$

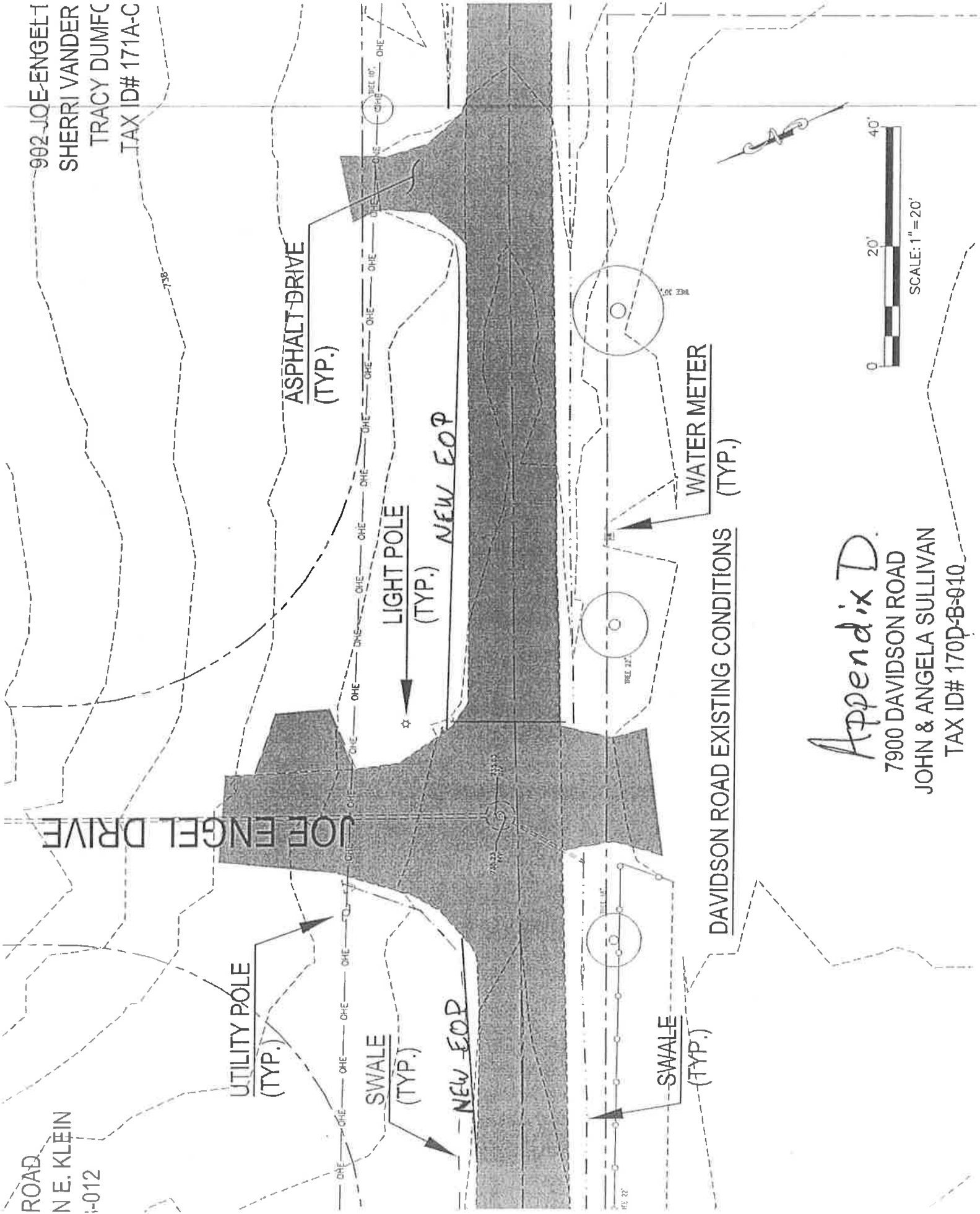


## APPENDIX C

Norfolk Green Cir

902 JOE ENGEL DRIVE  
SHERRI VANDER  
TRACY DUMFRIES  
TAX ID# 171A-C

ROAD  
N.E. KLEIN  
-012



*Appendix D.*  
7900 DAVIDSON ROAD  
JOHN & ANGELA SULLIVAN  
TAX ID# 170D-B-010

CHARLES A. & WANDA H. NICKENS TR

TAX ID# 171A-C-013

New EOP

Regrade to drain

JULIAN ROAD

WATER VALVE  
(TYP)

FIRE  
HYDRANT

DAVIDSON ROAD EXISTING CONDITIONS

J ROAD  
A EAVES ET AL

ID-B-011

0 20' 40'  
SCALE: 1" = 20'

