

ADDENDUM NUMBER 1

PARTICULARS

1.01 DATE: 04.25.2022

1.02 PROJECT: FOLEY PRIDE POCKET PARK

1.03 OWNER'S PROJECT NUMBER: ENGR-042622B

1.04 OWNER: CITY OF FOLEY

1.05 LANDSCAPE ARCHITECT: WAS DESIGN, INC.

TO: PROSPECTIVE BIDDERS:

2.01 THIS ADDENDUM FORMS A PART OF THE CONTRACT DOCUMENTS AND MODIFIES THE ORIGINAL PROCUREMENT DOCUMENTS DATED 04.08.2022, WITH AMENDMENTS AND ADDITIONS NOTED BELOW.

2.02 ACKNOWLEDGE RECEIPT OF THIS ADDENDUM IN THE SPACE PROVIDED IN THE BID FORM. FAILURE TO DO SO MAY DISQUALIFY THE BIDDER.

2.03 THIS ADDENDUM CONSISTS OF 5 PAGES AND THE FOLLOWING DRAWINGS:

CHANGES TO DRAWINGS:

3.01 SUMMARY OF CHANGES.

- A. Document Memorandum, "RFI responses to questions received in writing, Addendum 01" dated 04.25.2022, (new).

3.02 THIS ADDENDUM INCLUDES CHANGES TO THE FOLLOWING SHEETS:

- A. LH100 - Hardscape Plan, dated 04.08.22, (reissued).
- B. LF100 - Site Furnishings Plan, dated 04.08.22 (reissued).

END OF SECTION

This page intentionally left blank



RFI Responses

To: Bidders
From: Dan Majors
Date: April 25, 2022

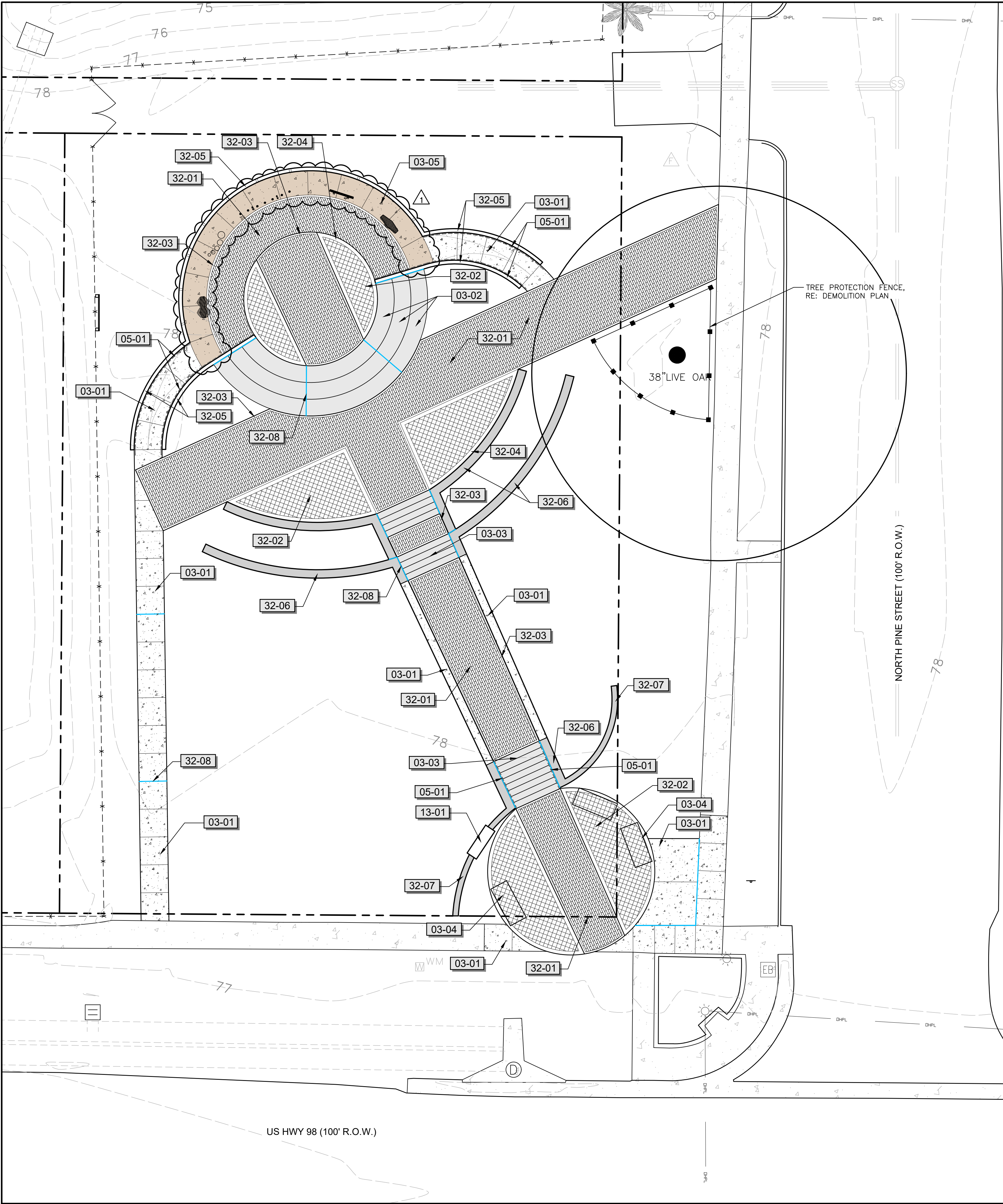
Job Name: Foley Pride Pocket Park
WAS Job #: 216003-016
Job Phase: BID

Re: Foley Pride Pocket Park - RFI responses to questions received in writing, Addendum 01

- 1) Is the GC responsible for the entrance signage?
 - a) No, the signface and lighting will be provided & installed by the owner. The GC is responsible for building the wall and providing conduit as detail 1/LH502 has shown.
- 2) Are all of the harmony park instruments to be in ground or surface mounted?
 - a) All Harmony Park instruments shall be surface mounted per the manufacturer's recommendations. The stage concrete has been increased to 6" to comply with the manufacturer's installation detail.

NOT
FOR CONSTRUCTION
THESE PLANS HAVE NOT BEEN
APPROVED AND ARE SUBJECT
TO CHANGE.

A Landscape Development Plan for
Foley Pride Pocket Park
Foley, Alabama



REFERENCE NOTES SCHEDULE

SYMBOL	03 CONCRETE DESCRIPTION	QTY	DETAIL
03-01	CONCRETE PAVING, 3,500 PSI CONCRETE, 5" THICK, MEDIUM BROOM FINISH	1,975 SF	2/LH500
03-02	CONCRETE STEP, 36" TREAD X 6" RISER, 4,000 PSI CONCRETE, MEDIUM BROOM FINISH WITH RIBBED SAFETY NOSING. QUANTITY NOTED INDICATES TOTAL TREAD LENGTH AT 36" WIDTH.	138 LF	3/LH501
03-03	CONCRETE STEP, 14" DEEP X 6" RISER, +/-10.5" WIDE TREAD, 4,000 PSI CONCRETE, MEDIUM BROOM FINISH WITH RIBBED SAFETY NOSING	13	4/LH501
03-04	CONCRETE, BENCH UNDERSLAB	72 SF	5/LH501
03-05	CONCRETE PAVING, 3,500 PSI CONCRETE, 6" THICK, MEDIUM BROOM FINISH	308 SF	1
SYMBOL	05 METALS DESCRIPTION	QTY	DETAIL
05-01	HANDRAIL, STAINLESS STEEL, ROUND TUBING, 1.5" DIA.	123 LF	6/LH501
SYMBOL	13 SPECIAL CONSTRUCTION DESCRIPTION	QTY	DETAIL
13-01	ENTRANCE SIGN, BRICK MONUMENT SIGN WALL BY CONTRACTOR. SIGNFACE & LIGHTING TO BE PROVIDED & INSTALLED BY OWNER.	1	1/LH502
SYMBOL	32 EXTERIOR IMPROVEMENTS DESCRIPTION	QTY	DETAIL
32-01	UNIT PAVER FIELD, 4"x16" PLANK PAVERS BY TREMRON, COLOR: TAN, PATTERN: RUNNING BOND AS SHOWN	2,402 SF	1/LH500
32-02	UNIT PAVER FIELD, 8"x8" PARK PLAZA PAVERS BY TREMRON, COLOR: TAUPE, PATTERN: 45 DEGREE AS SHOWN	817 SF	1/LH500
32-03	UNIT PAVER BAND, 4"x16" PLANK PAVERS BY TREMRON, COLOR: TAN, PATTERN: SAILOR COURSE	595 LF	1/LH500
32-04	UNIT PAVER BAND, 8"x8" PARK PLAZA PAVERS BY TREMRON, COLOR: TAUPE, PATTERN: SAILOR COURSE	339 LF	1/LH500
32-05	RETAINING WALL, PIP CONCRETE, 4,000 PSI, 8" WIDE, MEDIUM BROOM FINISH, HT. VARIES	170 LF	7/LH501
32-06	RETAINING WALL, PIP CONCRETE, 4,000 PSI, 18" WIDE, MEDIUM BROOM FINISH, HT. VARIES	167 LF	2/LH501
32-07	RETAINING WALL, PIP CONCRETE, 4,000 PSI, 12" WIDE, MEDIUM BROOM FINISH, HT. VARIES	45 LF	2/LH502
32-08	EXPANSION JOINT, GRAPHICALLY DEMONSTRATED ON PLAN AS LIGHT BLUE LINE	113 LF	2/LH500

Revisions

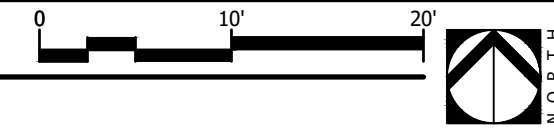
No.	Date	Revisions / Submissions
11.22.21		FOR OWNER REVIEW
11.24.21		FOR OWNER REVIEW
12.15.21		FOR OWNER REVIEW
01.17.22		FOR OWNER REVIEW
02.10.22		FOR OWNER REVIEW
04.08.22		CD100 - BID SET
04.25.22		ADDENDUM 01

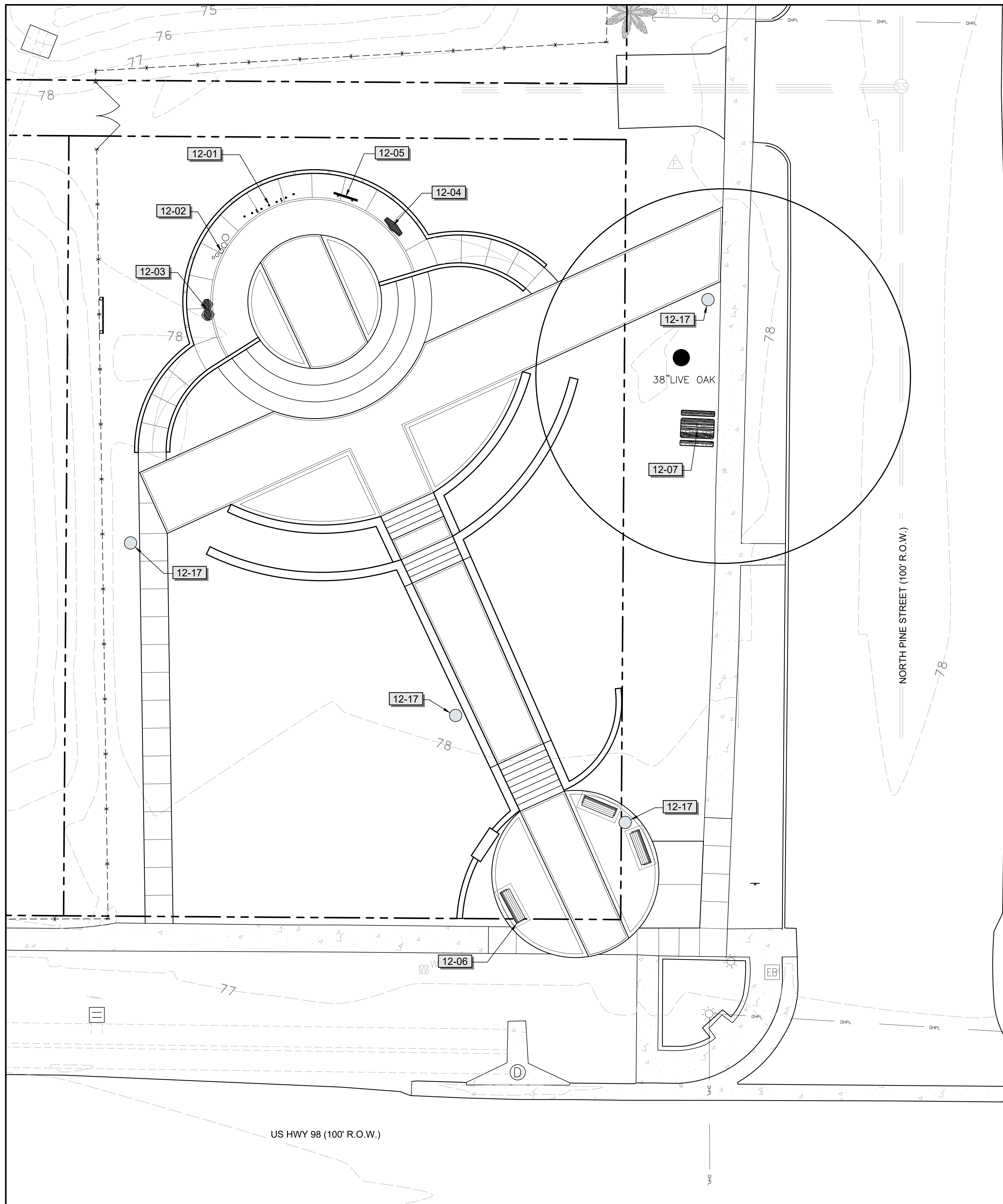
© Copyright 2022 WAS Design Inc. These documents and their contents are the property of WAS Design. Any reproductions, revisions, modifications or use of these documents without the express written consent of WAS Design is prohibited by law.

YJ _____ Registration
 Drawn _____
 DM _____
 Project Manager _____
 CW _____
 Principal _____
 216003-016
 Project No. _____
 04.06.21
 Date _____

Sheet Title

HARDSCAPE PLAN





REFERENCE NOTES SCHEDULE

SYMBOL	12 SITE FURNISHINGS DESCRIPTION	QTY
12-01	CONTRABASS CHIMES, BY FREENOTES HARMONY PARK, SURFACE MOUNTED PER MANUFACTURER'S RECOMMENDATION.	1
12-02	TUNED DRUMS, BY FREENOTES HARMONY PARK, SURFACE MOUNTED PER MANUFACTURER'S RECOMMENDATION.	1
12-03	IMBARIMBA, BY FREENOTES HARMONY PARK, SURFACE MOUNTED PER MANUFACTURER'S RECOMMENDATION.	1
12-04	PEGASUS, BY FREENOTES HARMONY PARK, SURFACE MOUNTED PER MANUFACTURER'S RECOMMENDATION.	1
12-05	SWIRL, BY FREENOTES HARMONY PARK, SURFACE MOUNTED PER MANUFACTURER'S RECOMMENDATION.	1
12-06	BENCH, LAMPLIGHTER WITH BACK BY KEYSTONE RIDGE DESIGNS, MODEL #L26, COLOR: GLOSS BLACK. CAST ON NAME PLATE: CITY OF FOLEY.	3
12-07	PICNIC TABLE, DUMOR TABLE SET 475-601-1 72" STEEL ADA PICNIC TABLE. FRAME: TEXTURED STEEL, SILVER. TABLETOP AND SEATS IN IPE. SURFACE MOUNT INSTALL PER MANUFACTURER'S INSTRUCTIONS.	1
12-17	TRASH RECEPTACLE, DUMOR 474-32-BT 32GAL STEEL RECEPTACLE WITH SLATS. TEXTURED SILVER COLOR TO MATCH PICNIC TABLE. IPE SLATS. COVERED TOP DEPOSIT WITH 10" OPENING. INSTALL PER MANUFACTURER'S INSTRUCTIONS ON 4" CONCRETE BASE THAT IS SAME RADIUS AS BOTTOM OF UNIT. FINISH ELEVATION OF BASE SHOULD BE 1" ABOVE ADJACENT GRADE.	4

CONTRACTOR / BIDDING NOTES

BASE BID
 FOR BASE BID, CONTRACTOR SHALL PURCHASE & INSTALL ALL ITEMS ON PLAN AS SHOWN.

BID ALTERNATE #01
 FOR BID ALTERNATE #01, OWNER WILL PURCHASE AND PROVIDE ALL MUSICAL INSTRUMENTS (12-01, 12-02, 12-03, 12-04, 12-05). CONTRACTOR TO COORDINATE INSTRUMENT PICK-UP WITH OWNER. CONTRACTOR TO INSTALL ALL INSTRUMENTS AS SHOWN ON PLAN. ALL OTHER FURNITURE TO BE PURCHASED & INSTALLED BY CONTRACTOR AS SHOWN ON PLAN.



NOT FOR CONSTRUCTION
 THESE PLANS HAVE NOT BEEN APPROVED AND ARE SUBJECT TO CHANGE.

A Landscape Development Plan for
Foley Pride Pocket Park
 Foley, Alabama

Revisions

No.	Date	Revisions / Submissions
11.22.21		FOR OWNER REVIEW
11.24.21		FOR OWNER REVIEW
12.15.21		FOR OWNER REVIEW
01.17.22		FOR OWNER REVIEW
02.10.22		FOR OWNER REVIEW
04.08.22		CD100 - BID SET
04.25.22		ADDENDUM 01

© Copyright 2022 WAS Design Inc. These documents and their contents are the property of WAS Design. Any reproductions, revisions, modifications or use of these documents without the express written consent of WAS Design is prohibited by law.

BH	Registration
Drawn	
DM	
Project Manager	
CW	
Principal	
216003-016	
Project No.	
04.06.21	
Date	

Sheet Title

SITE FURNISHINGS PLAN