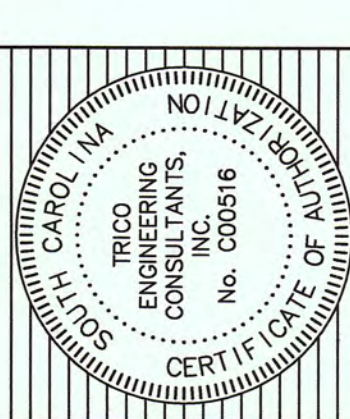
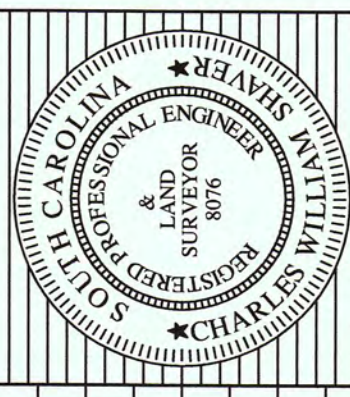


NO.	DATE	REVISIONS

TITLE
DRAINAGE AS-BUILT
 PHASE 1 OF ARBOR OAKS SUBDIVISION
 LOCATED IN
 THE TOWN OF SUMMerville
 DORCHESTER COUNTY, SOUTH CAROLINA



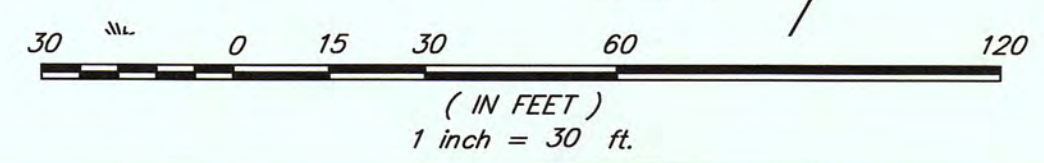
4425 Belle Oak Drive
 Myrtle Beach, South Carolina 29570
 Phone: (843) 740-7700
 Fax: (843) 740-7707
 info@tricoengineering.com
TRICO
 ENGINEERING CONSULTANTS, INC.
 Civil Engineering - Surveying - Landscape Architecture
 Land Planning - Wetland Consulting - GPS Services
 Visit us at <http://www.tricoengineering.com>

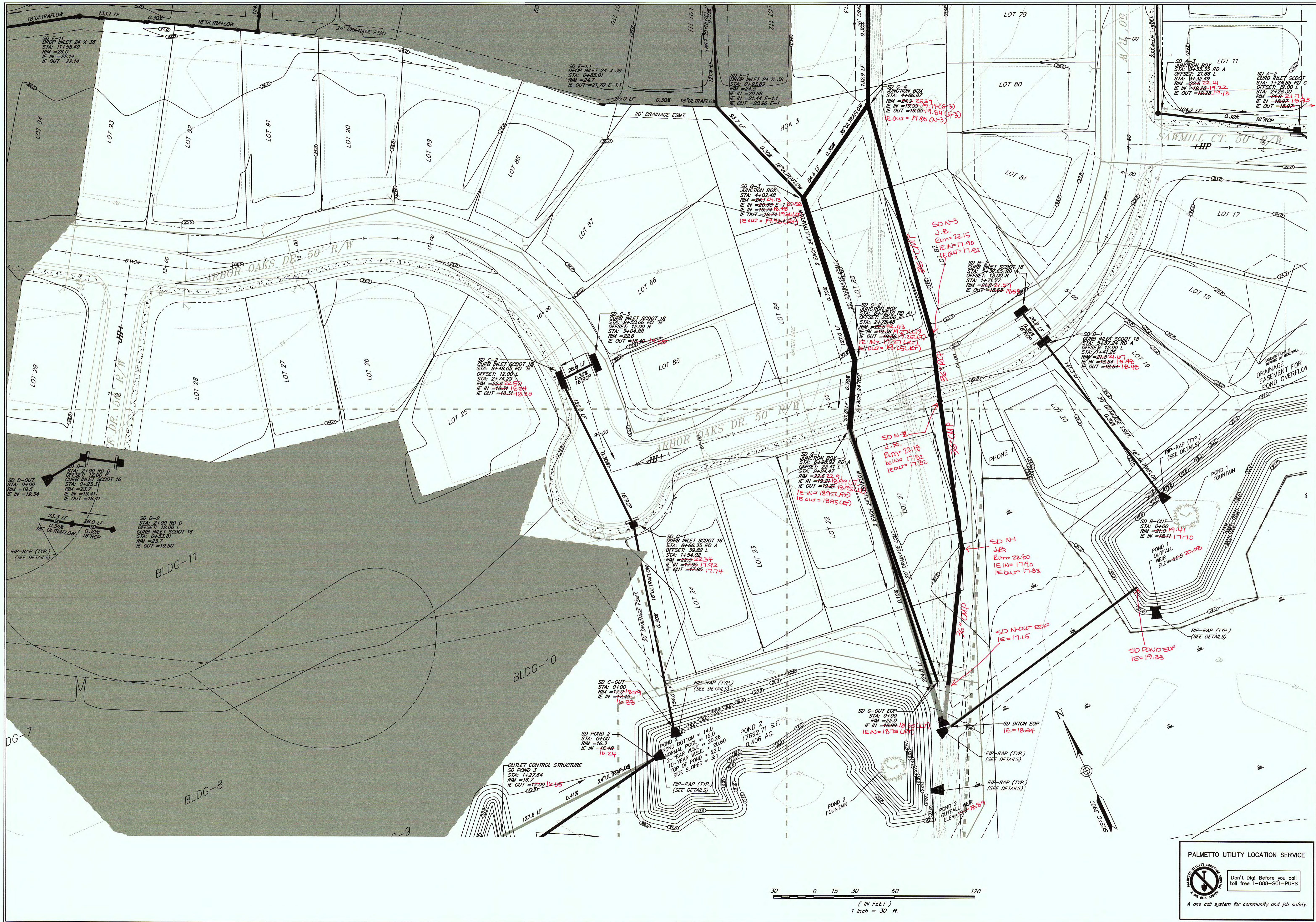


DESIGNED: MEZ
 DRAWN: ALPC
 CHECKED: CWS
 APPROVED: CWS
 SCALE: 1" = 30'
 DATE: 17 MAY 2004
 PROJECT NO.: 01-087
 SHEET 1 OF 4

PALMETTO UTILITY LOCATION SERVICE

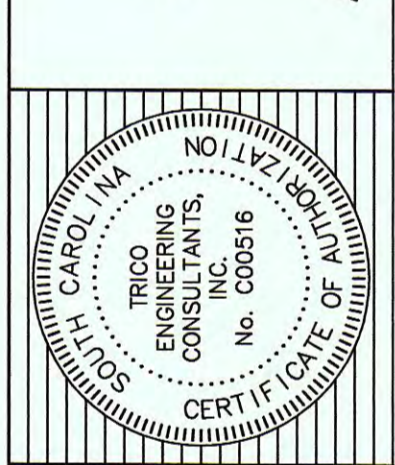
 Don't Dig! Before you call
 toll free 1-888-SC1-PUPS
 A one call system for community and job safety.





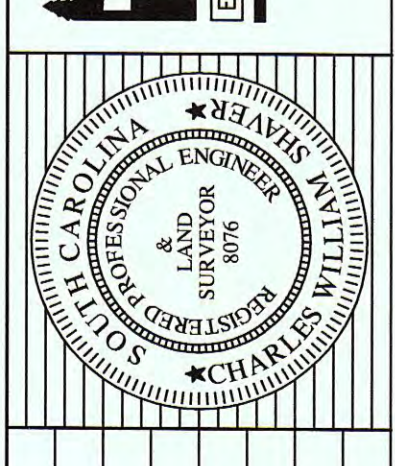
NO.	DATE	REVISIONS

TITLE
DRAINAGE AS-BUILT
 PHASE I OF ARBOR OAKS SUBDIVISION
 LOCATED IN
 THE TOWN OF SUMMERVILLE
 DORCHESTER COUNTY, SOUTH CAROLINA



4425 Belle Oak Drive
 South Carolina 29405
 Phone: (843) 740-7700
 Fax: (843) 740-7707
 info@tricoengineering.com

TRICO
 ENGINEERING CONSULTANTS, INC.
 CIVIL ENGINEERING - SURVEYING - LANDSCAPE ARCHITECTURE
 LAND PLANNING - WEIRAND CONSULTING - GPS SERVICES
 Visit us at <http://www.tricoengineering.com>

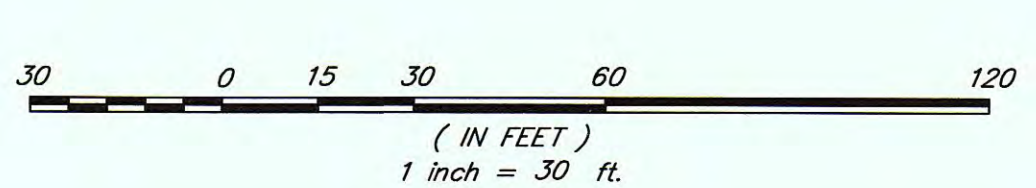


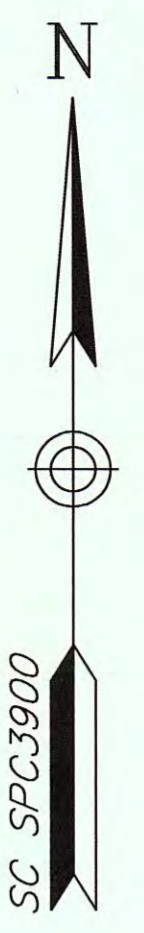
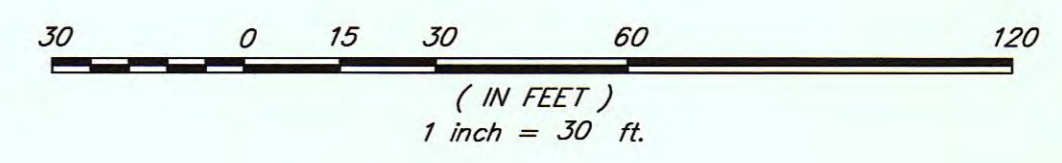
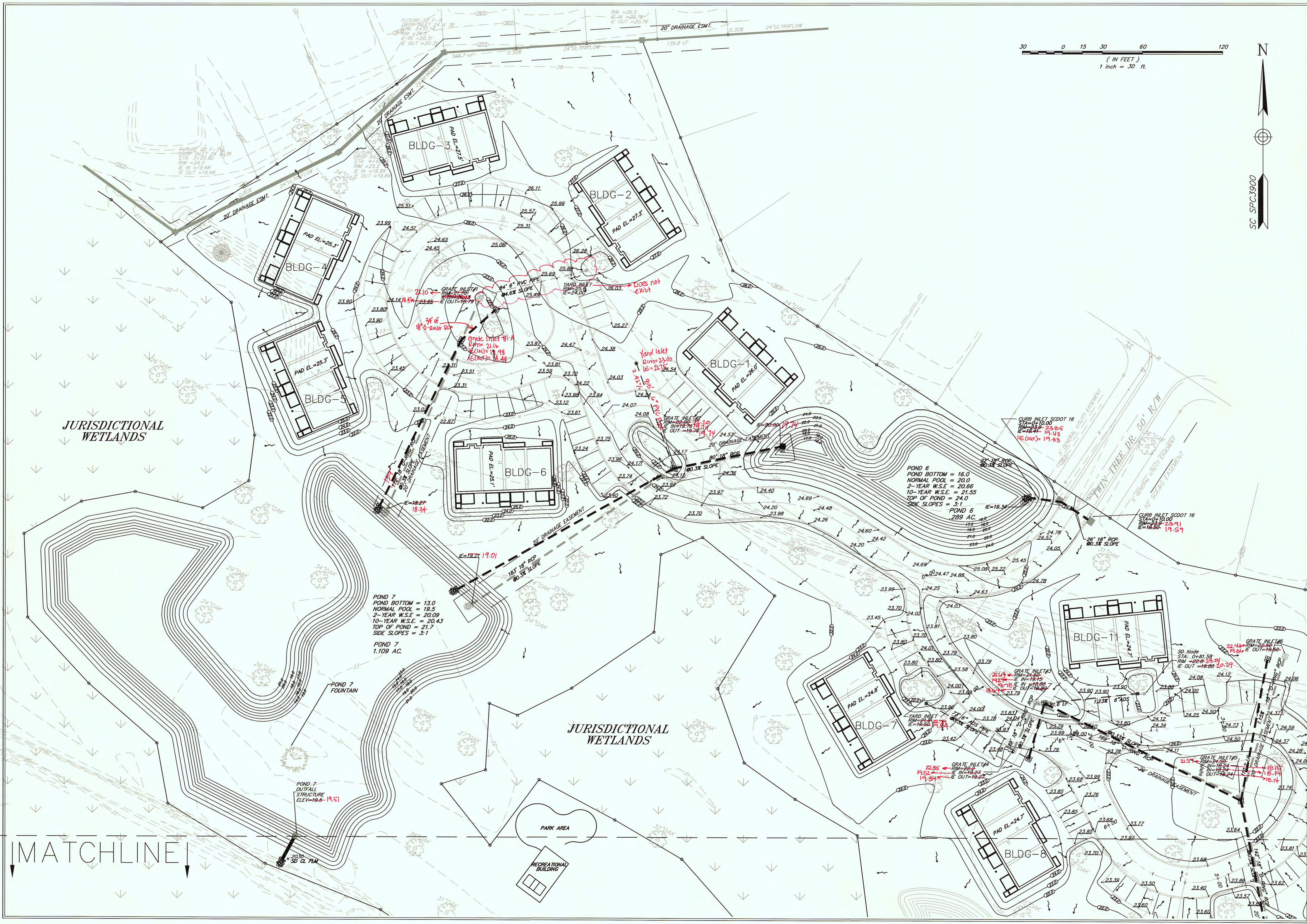
DESIGNED: MEZ
 DRAWN: KLPC
 CHECKED: CWS
 APPROVED: CWS
 SCALE: 1"=30'
 DATE: 17 MAY 2004
 PROJECT NO.: 01-087
 SHEET 2 of 4

PALMETTO UTILITY LOCATION SERVICE

Don't Dig! Before you call
 toll free 1-888-361-PUPS

A one call system for community and job safety.



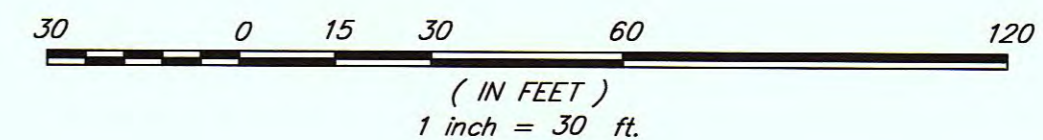
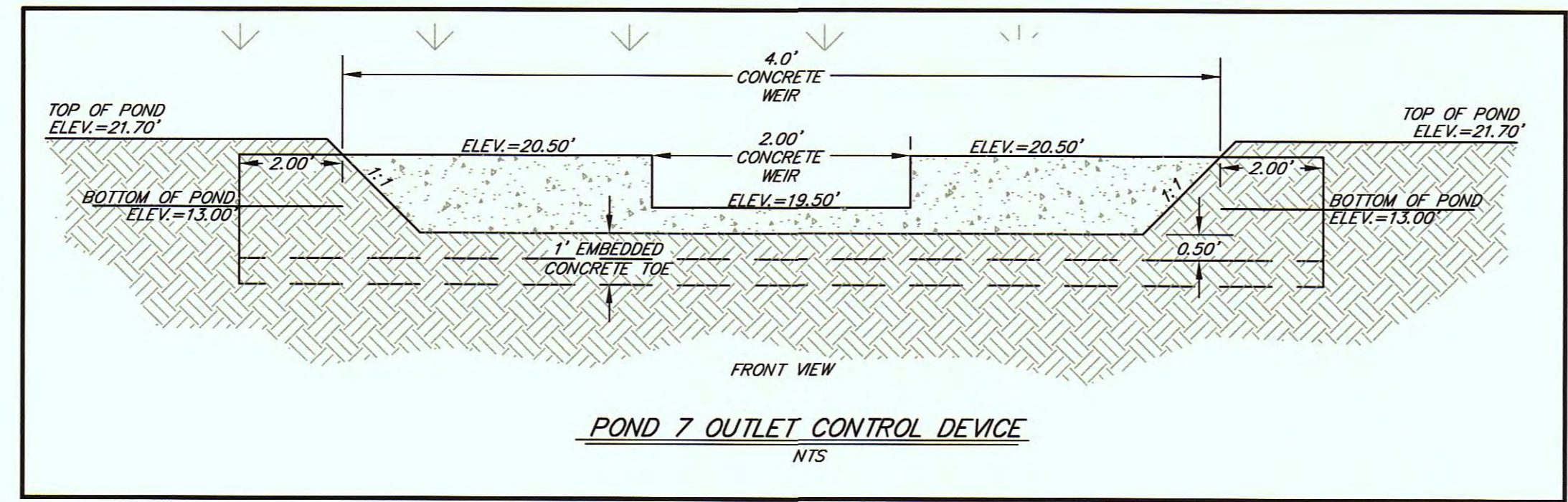
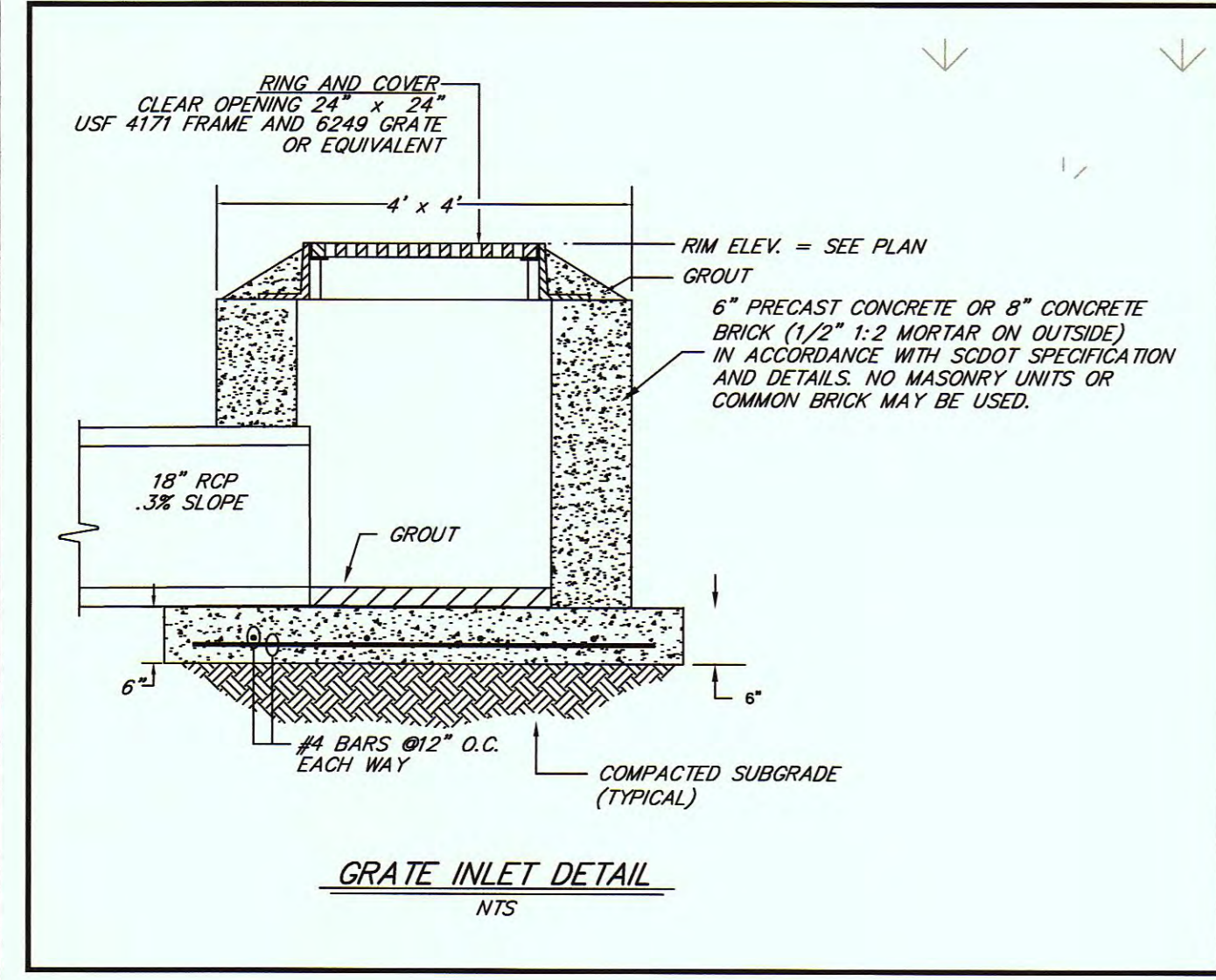
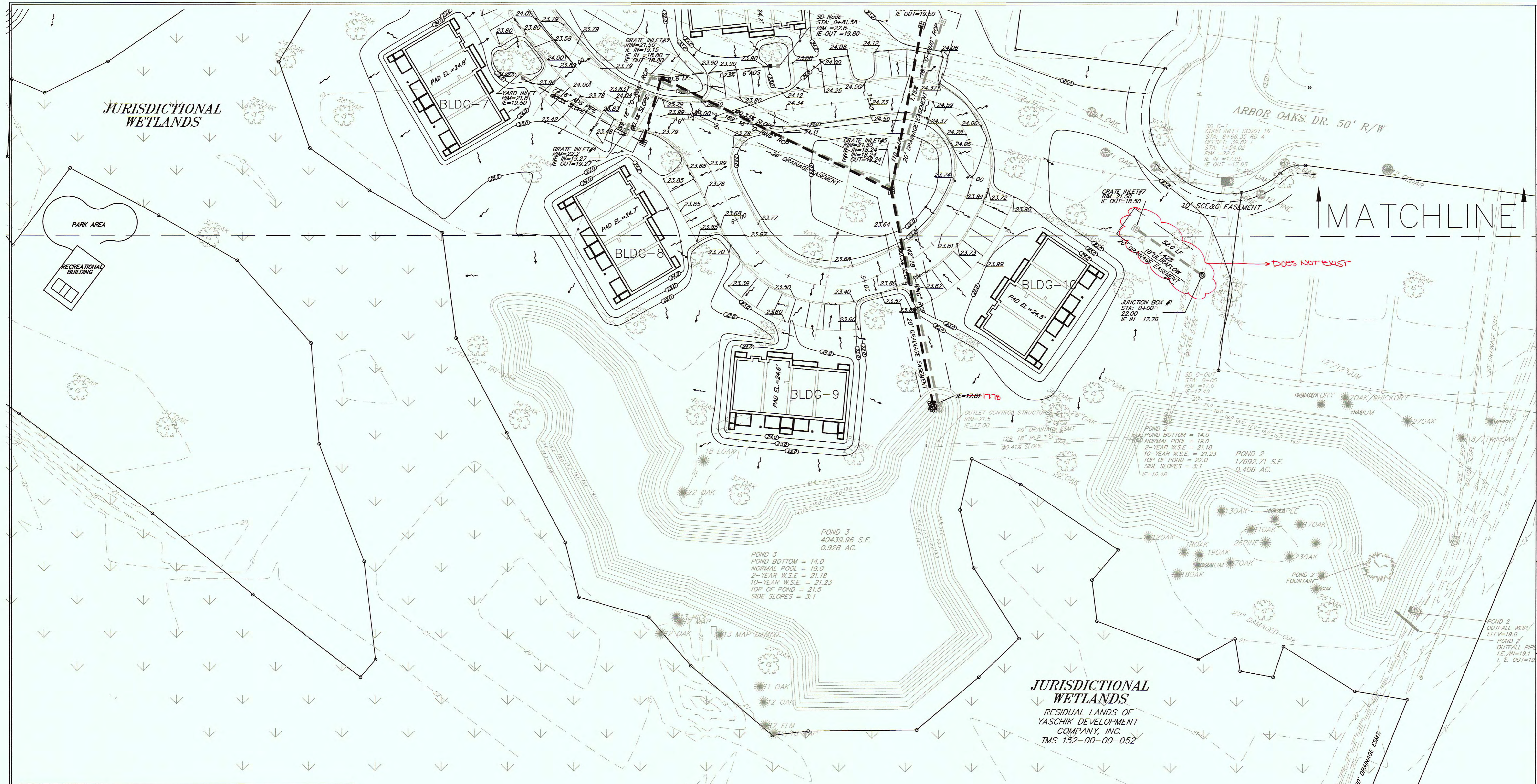


JURISDICTIONAL WETLANDS

JURISDICTIONAL WETLANDS

MATCHLINE

DESIGNED: MEZ	PROJECT NO.: 01-087
DRAWN: ALPC	SHEET 7 OF 2
CHECKED: CWS	DATE: 27 JANUARY 2004
APPROVED: CWS	SCALE: 1" = 30'
TITLE DRAINAGE AS-BUILT ARBOR OAKS TOWNHOMES LOCATED IN THE TOWN OF SUMMERVILLE DORCHESTER COUNTY, SOUTH CAROLINA	
4425 Belle Oak Drive North Charleston, SC 29405 Phone: (843) 740-7700 Fax: (843) 740-7707 info@tricroengineering.com www.tricroengineering.com	
Civil Engineering - Surveying - Landscape Architecture Land Planning - Wetland Consulting - GPS Services Visit us at http://www.tricroengineering.com	
REVISIONS NO. DATE	

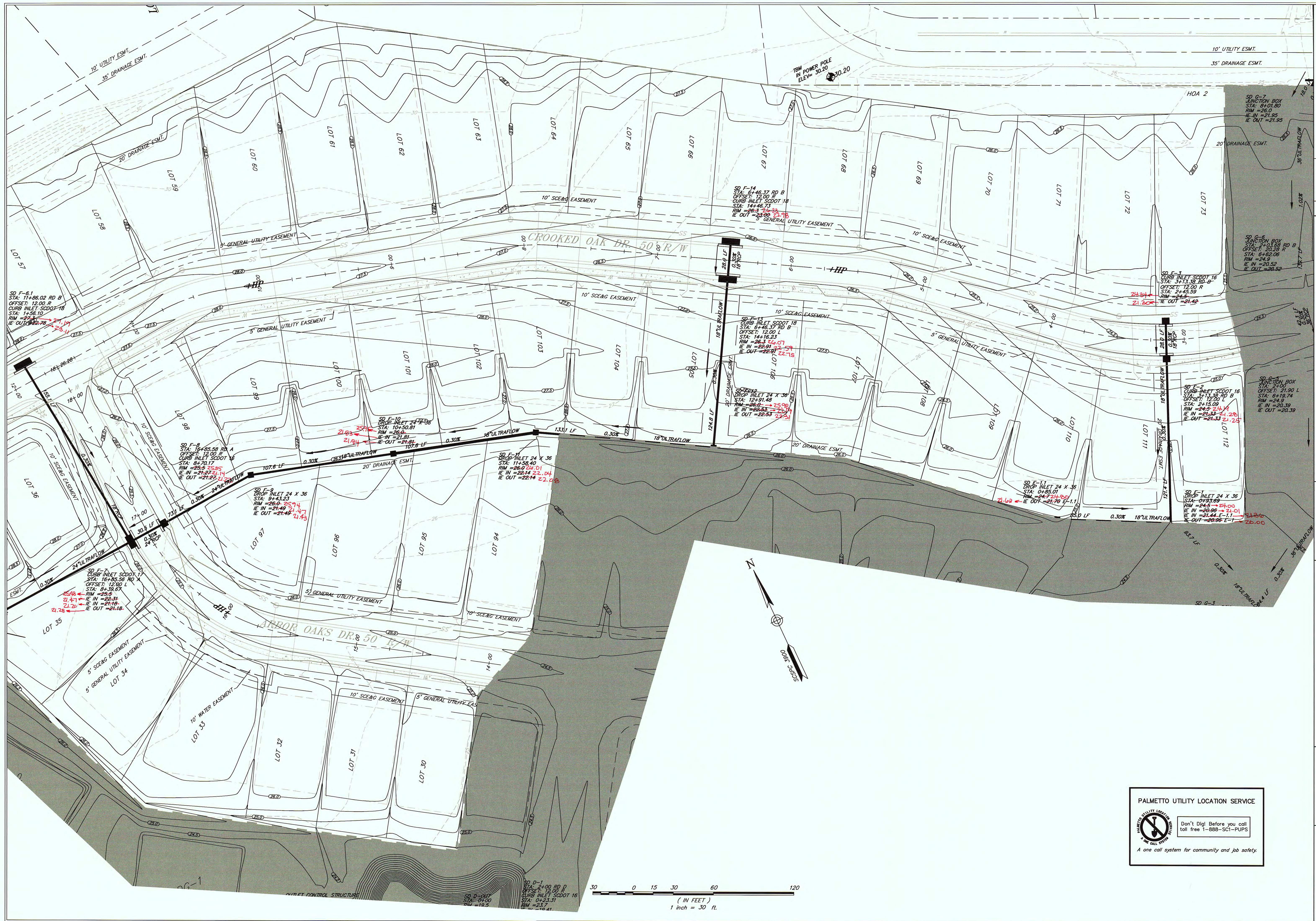


DESIGNED BY: MEL	DATE: 27 JANUARY 2004
DRAWN BY: KLPC	PROJECT NO.: 01-087
CHECKED BY: CWS	SHEET 2 OF 2
APPROVED BY: CWS	
SCALE: 1" = 30'	

4425 Belle Oak Drive
 North Charleston, SC 29405
 Phone: (843) 740-7700
 Fax: (843) 740-7707
 info@tricoengineering.com
TRICO
 ENGINEERING CONSULTANTS, INC.
 CIVIL ENGINEERING - SURVEYING - LANDSCAPE ARCHITECTURE
 LAND PLANNING - WETLAND CONSULTING - GIS SERVICES
 Visit us at <http://www.tricoengineering.com>

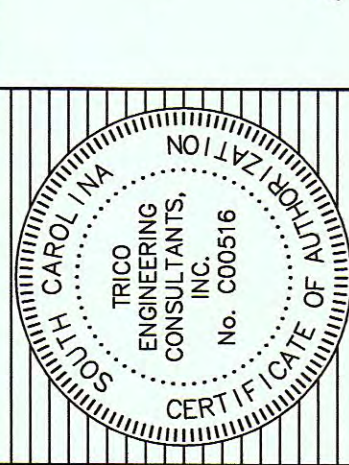
TITLE: DRAINAGE AS-BUILT
 ARBOR OAKS TOWNHOMES
 LOCATED IN THE TOWN OF SUMMERVILLE
 DORCHESTER COUNTY, SOUTH CAROLINA

NO.	DATE	REVISIONS



NO.	DATE	REVISIONS

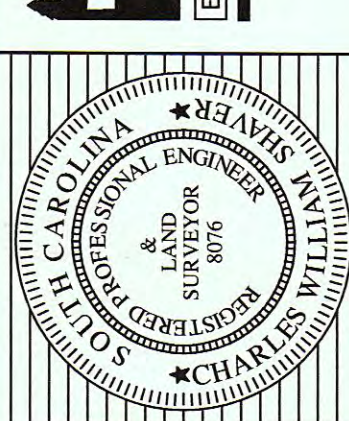
TITLE
DRAINAGE AS-BUILT
 PHASE II OF ARBOR OAKS SUBDIVISION
 LOCATED IN
 THE TOWN OF SUMMERVILLE
 DORCHESTER COUNTY, SOUTH CAROLINA



4425 Belle Oak Drive
 South Carolina 29405
 Phone: (843) 740-7700
 Fax: (843) 740-7707
 info@tricoengineering.com

TRICO
 ENGINEERING CONSULTANTS, INC.

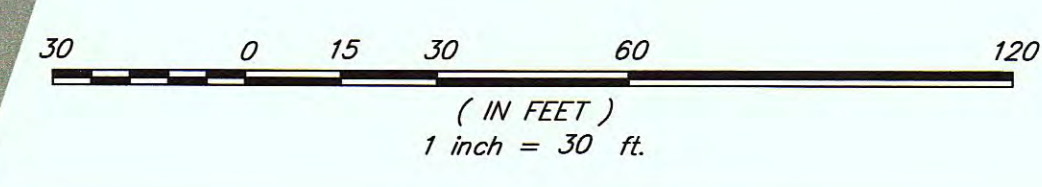
Civil Engineering - Surveying - Landscape Architecture
 Land Planning - Wetland Consulting - GPS Services
 Visit us at <http://www.tricoengineering.com>



PALMETTO UTILITY LOCATION SERVICE

Don't Dig! Before you call
 toll free 1-888-SCI-PUPS

A one call system for community and job safety.



DESIGNED : MEL
 DRAWN : KLPC
 CHECKED : CWS
 APPROVED : CWS

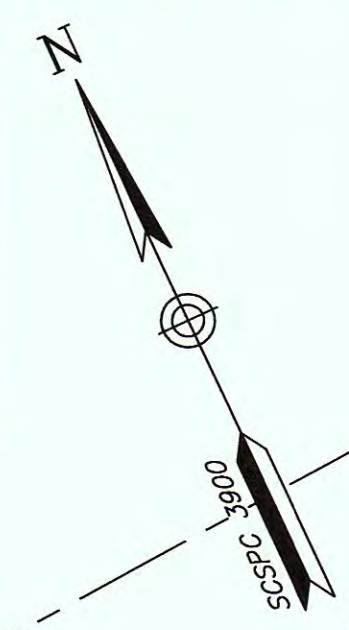
SCALE : 1" = 30'
 DATE : 27 JANUARY 2004
 PROJECT NO. : 01-087

SHEET 7 of 3

PALMETTO UTILITY LOCATION SERVICE

Don't Dig! Before you call
toll free 1-888-501-PUPS

A one call system for community and job safety.



TITLE
DRAINAGE AS-BUILT
PHASE II OF ARBOR OAKS SUBDIVISION
LOCATED IN
THE TOWN OF SUMMERVILLE
DORCHESTER COUNTY, SOUTH CAROLINA

NO. LIVE LOAD, UNIFORM, POINT LOAD, WIND, SEISMIC, ETC.
TRICO
ENGINEERING
CONSULTANTS,
INC.
CERT. F. C. 111
No. 000516

4425 Belle Oak Drive
Summerville, South Carolina 29405
Phone: (843) 740-7700
Fax: (843) 740-7707
info@tricoengineering.com

TRICO
ENGINEERING CONSULTANTS, INC.

Civil Engineering - Surveying - Landscape Architecture
Land Planning - Historical Consulting - GPS Services
Visit us at <http://www.tricoengineering.com>

DESIGNED BY: MEL
DRAWN BY: KLPC
CHECKED BY: CWS
APPROVED BY: CWS
SCALE: 1" = 30'
DATE: 27 JANUARY 2004
PROJECT NO.: 01-087
SHEET 2 OF 3

NO.	DATE	REVISIONS

