

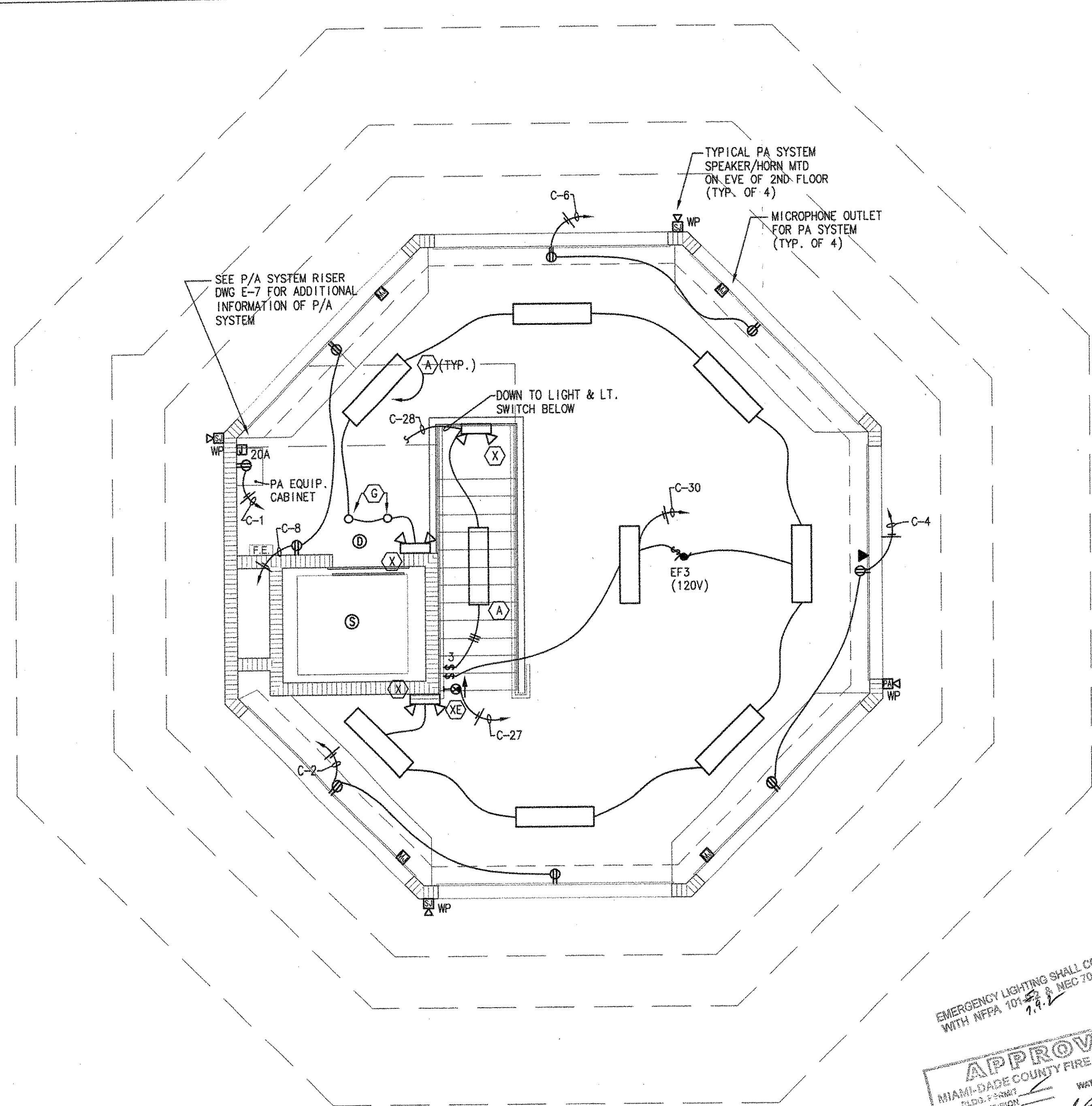
RECREATIONAL
DESIGN AND
CONSTRUCTION, INC.
3990 North Powerline Road
FL Lauderdale, FL 33309
Voice: 954.566.3885
Fax: 954.566.3335



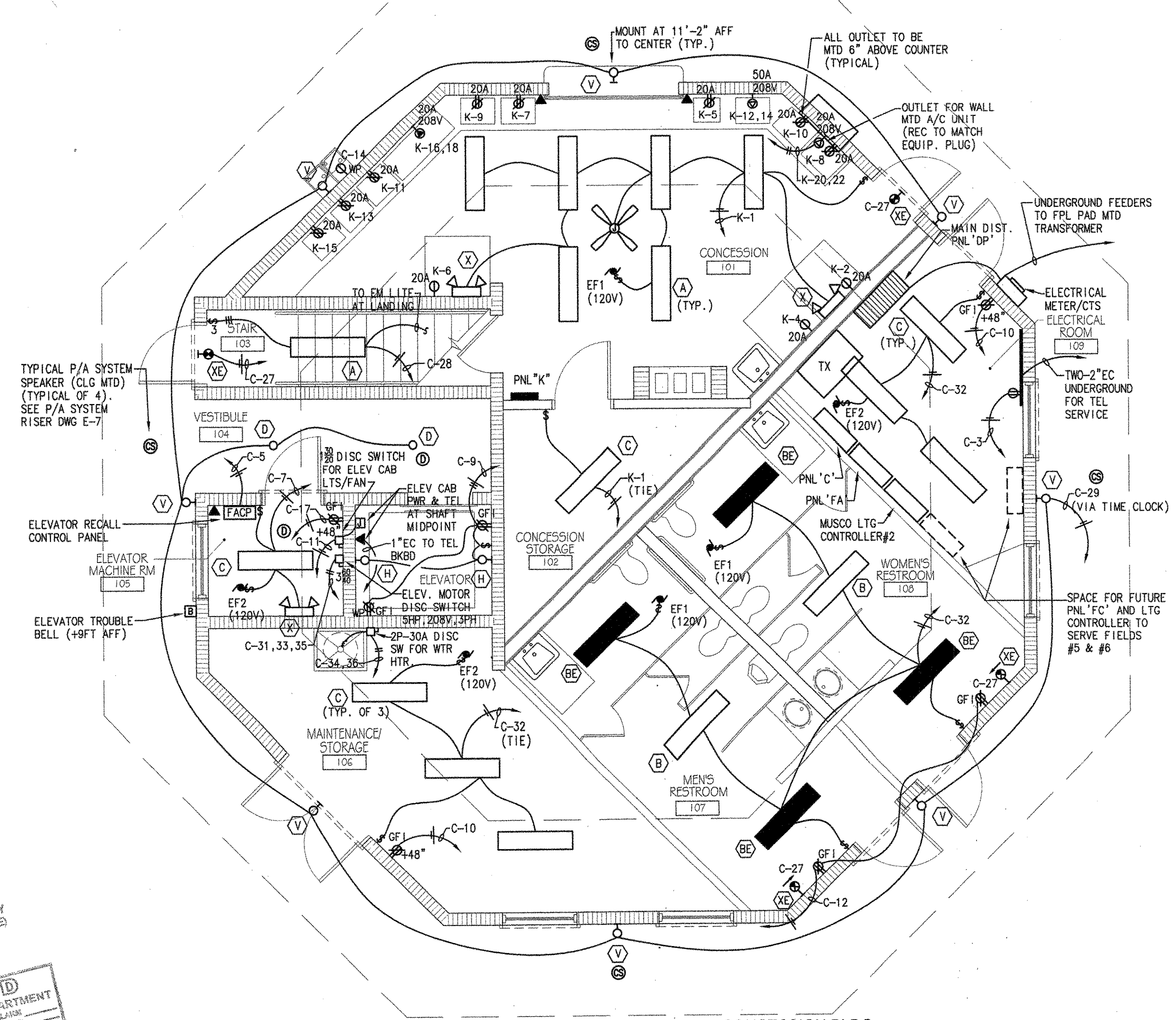
Bermello Ajamil & Partners, Inc.
Architecture Engineering Planning
Interior Design Landscape Architecture
2601 South Bayshore Drive 10th Floor
Miami, Florida 33133
(305) 859-2050 Fax (305) 860-3700

New Construction for:
PALMETTO BAY PARK
17535 SW 95th Avenue
Palmetto Bay, Florida 33157

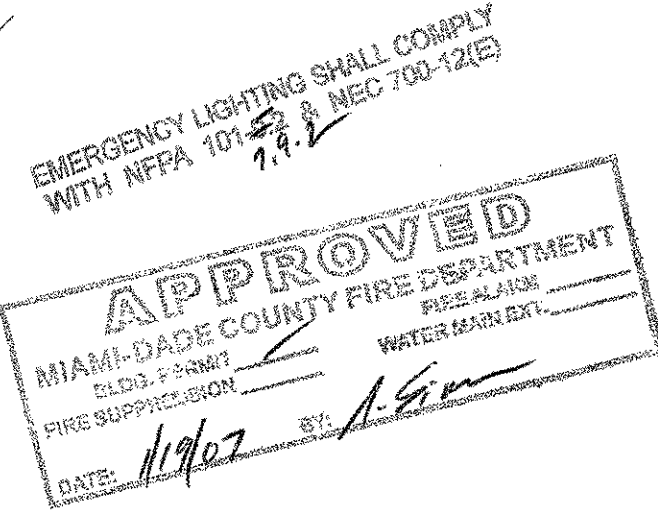
THIS DRAWING IS THE INTELLECTUAL PROPERTY OF RECREATIONAL DESIGN & CONSTRUCTION, INC. AND SHALL NOT BE REPRODUCED WITHOUT WRITTEN PERMISSION FROM A PRINCIPAL OF THE FIRM OR BE LIABLE FOR THE FULLEST LEGAL RECOURSE.



CONCESSION BLDG.
SECOND FLOOR ELECTRICAL PLAN
SCALE: 1/4" = 1'-0"

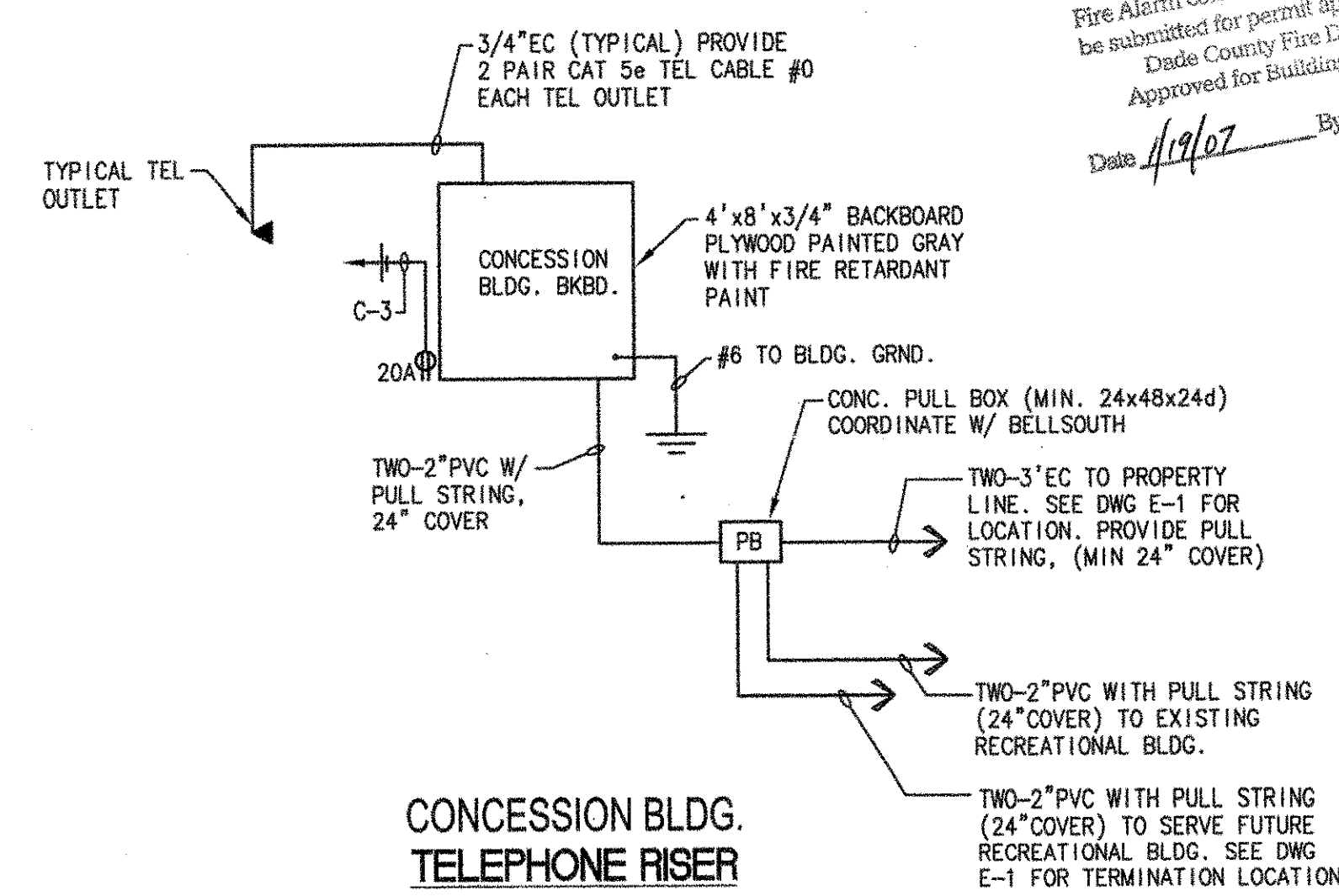


CONCESSION BLDG.
FIRST FLOOR ELECTRICAL PLAN
SCALE: 1/4" = 1'-0"



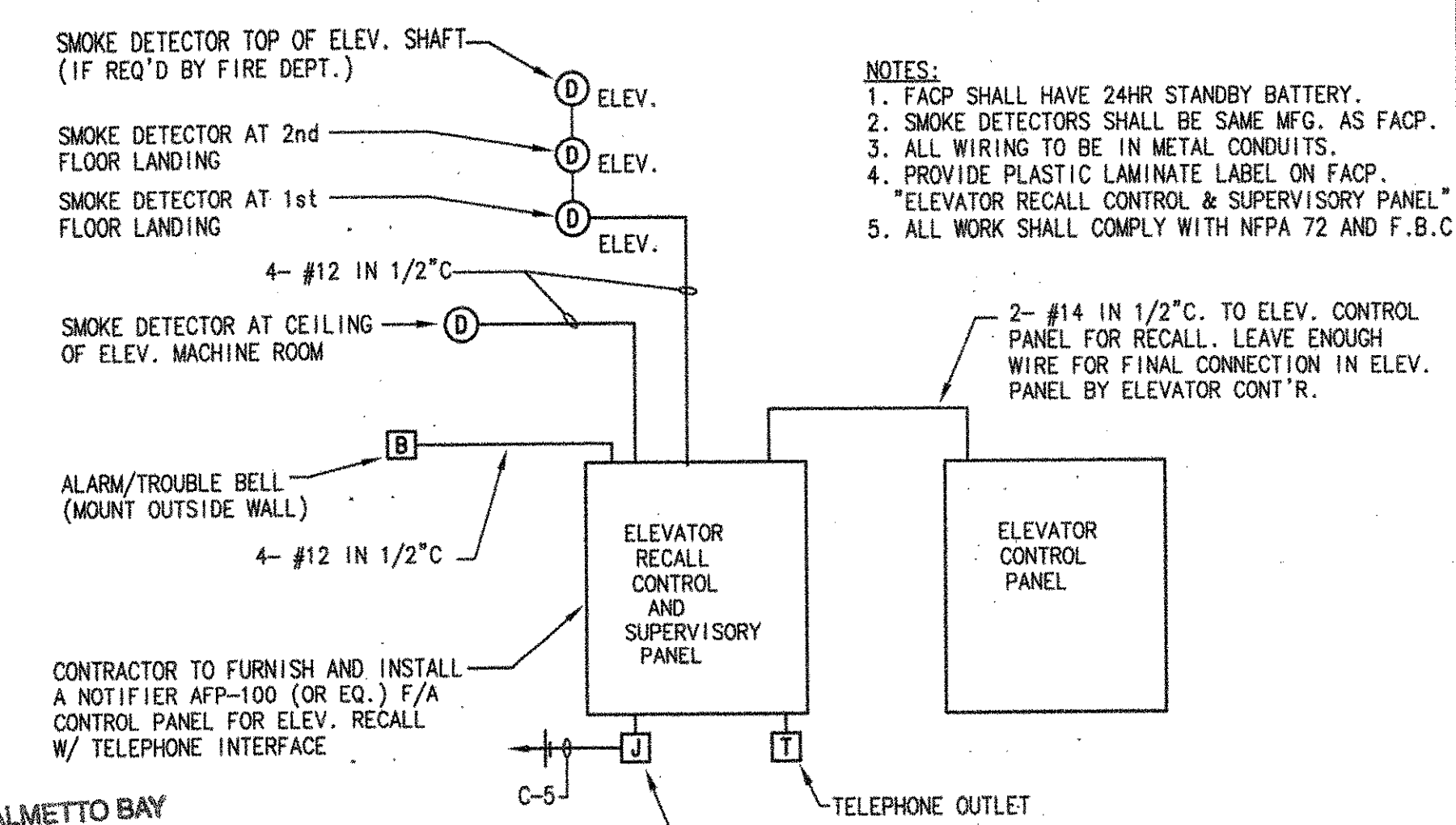
DO NOT INSTALL FIRE ALARM PER THIS DRAWING BEFORE INSTALLATION
Fire Alarm contractor's working plans shall be submitted for permit approval to Miami-Dade County Fire Department.
Approved for Building Permit only
Date 11/9/07 By [Signature]

LIGHTING FIXTURE SCHEDULE (CONCESSION BLDG)					
TYPE	DESCRIPTION	MOUNTING	LAMPS	VOLTS	REMARKS
A	COLUMBIA: 1x4 WRAPAROUND #MC4-232-ABB120	SURFACE (CEILING)	(2) F32 T8	120	
B	KENALL: 1x4, SURF. (HIGH ABUSE) #N1048232EB1120	SURFACE (CEILING)	(2) F32 T8	120	VANDAL RESISTANT
BE	KENALL: 1x4, SURF. (HIGH ABUSE) #XN1048-C-232EB-1-120 & B50 BODINE	SURFACE (CEILING)	(2) F32 T8	120	VANDAL RESISTANT W/ EMERGENCY BATTERY PACK (WIRED AS AN SWITCHABLE UNIT)
C	COLUMBIA: 4 FT. FL STRIP, WIRE GUARD CS4-232-EBB-120-CSWG4	SURFACE (CEILING)	(2) F32 T8	120	
D	KENALL MILLENIUM: MR13FL-PP-MW-42P1-120	SURFACE (CEILING)	42 W PLT	120	VANDAL RESISTANT (1 POSIGRIP SCREWDRIWER)
F	NOT USED				
G	PRESCOLITE: RECESSED D/L #TBXIC / T04S	RECESSED	(1) 26W TRI-TUBE	120	CLEAR ALZAK REFLECTOR, (INSULATED OLG.)
H	HUBBELL: VWX-151/VCG-15 ELEVATOR PIT LIGHT	SURFACE (WALL)	150 W	120	
V	KENALL MILLENIUM FREESTYLE: FS818R-2TB-PIA-MW-32P2-120	SURFACE (WALL)	(2) 32W PLT	120	VANDAL RESISTANT, (SEE DWGS FOR MTG. HGT)
W	NOT USED				
X	DUAL LITE # LZ2 EMERGENCY LT. FIXT. WITH BATTERY	SURFACE (WALL)	INCLUDED	120	CONNECT TO UNSWITCHED BRANCH CIRCUIT
XE	DUAL LITE # LYRW E EXIT LT. WITH BATTERY	SURFACE (WALL)	INCLUDED	120	



CONCESSION BLDG.
TELEPHONE RISER

NOTES:
1) COORDINATE ALL WORK WITH BELLSOUTH REPRESENTATIVE PRIOR TO COMMENCEMENT OF WORK



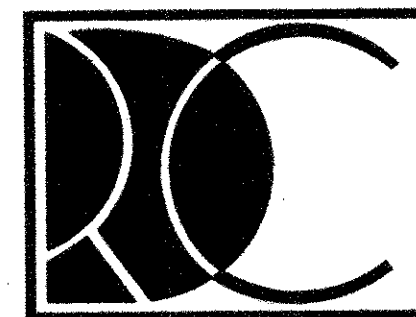
CONCESSION BLDG. ELEVATOR RECALL CONTROL RISER
(N.T.S.)

HN GS ENGINEERS
HUFSEY • NICOLAIDES • GARCIA • SUAREZ
CONSULTING ENGINEERS HWS # 05-0040
10020 SOUTH WEST 68 STREET SUITE B-201
MIAMI, FLORIDA 33165 (305) 270-9835 Fax (305) 270-2288
ENRIQUE J. SUAREZ, P.E. (MECHANICAL) FL REG. #0015794
CARLOS GARCIA, P.E. (ELECTRICAL) FL REG. #0014104

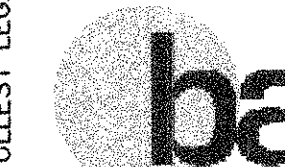
JOB NUMBER	06-287
FILE No. :	
DRAWN :	
REVIEWED :	
CHECKED :	
DATE :	11-21-06
ISSUE/REVISIONS:	



SHEET TITLE
CONCESSION BLDG
1st & 2nd FLOOR ELECTRICAL
PLAN, RISER DIAGRAMS &
LGT FIXTURE SCHEDULE
VOID
SHEET NUMBER

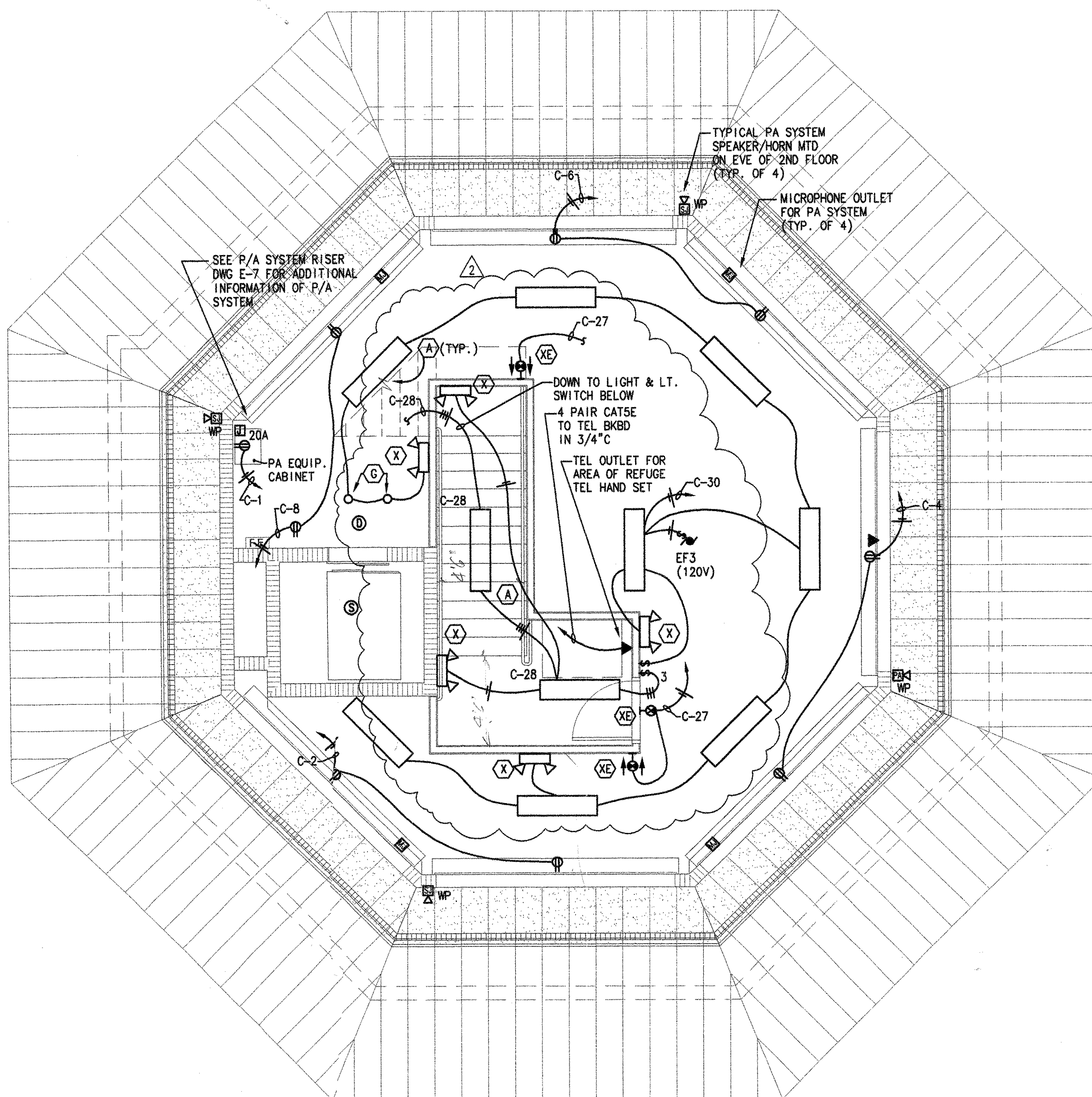


RECREATIONAL
DESIGN AND
CONSTRUCTION, INC.
3990 North Powerline Road
Ft. Lauderdale, FL 33309
Voice: 954.566.3885
Fax: 954.566.3335

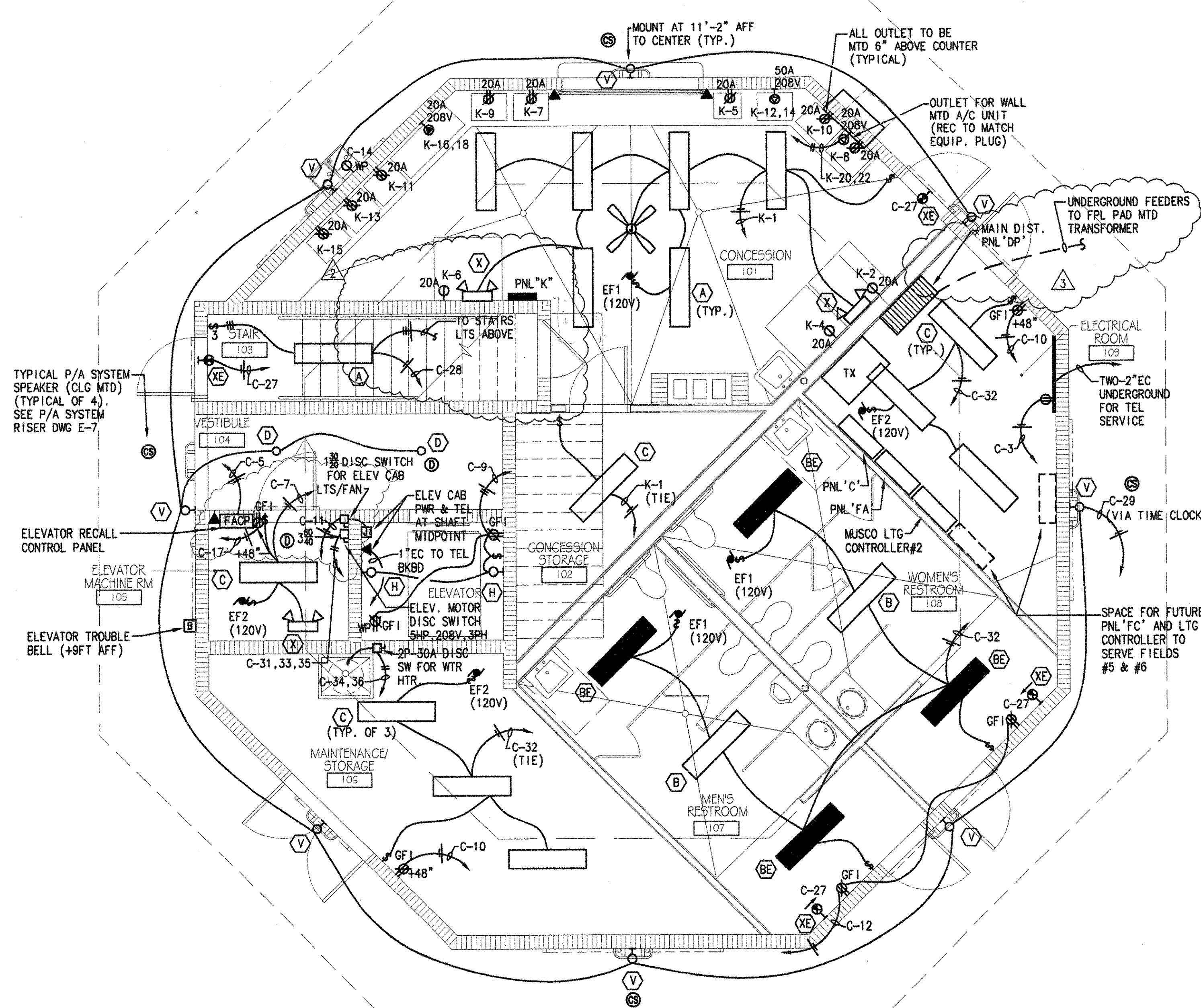


Bermello Ajamil & Partners, Inc.
Architecture Engineering Planning
Interior Design Landscape Architecture
2601 South Bayshore Drive 10th Floor
Miami, Florida 33133
(305) 859-2050 Fax (305) 860-3700

New Construction for:
PALMETTO BAY PARK
17535 SW 95th Avenue
Palmetto Bay, Florida 33157

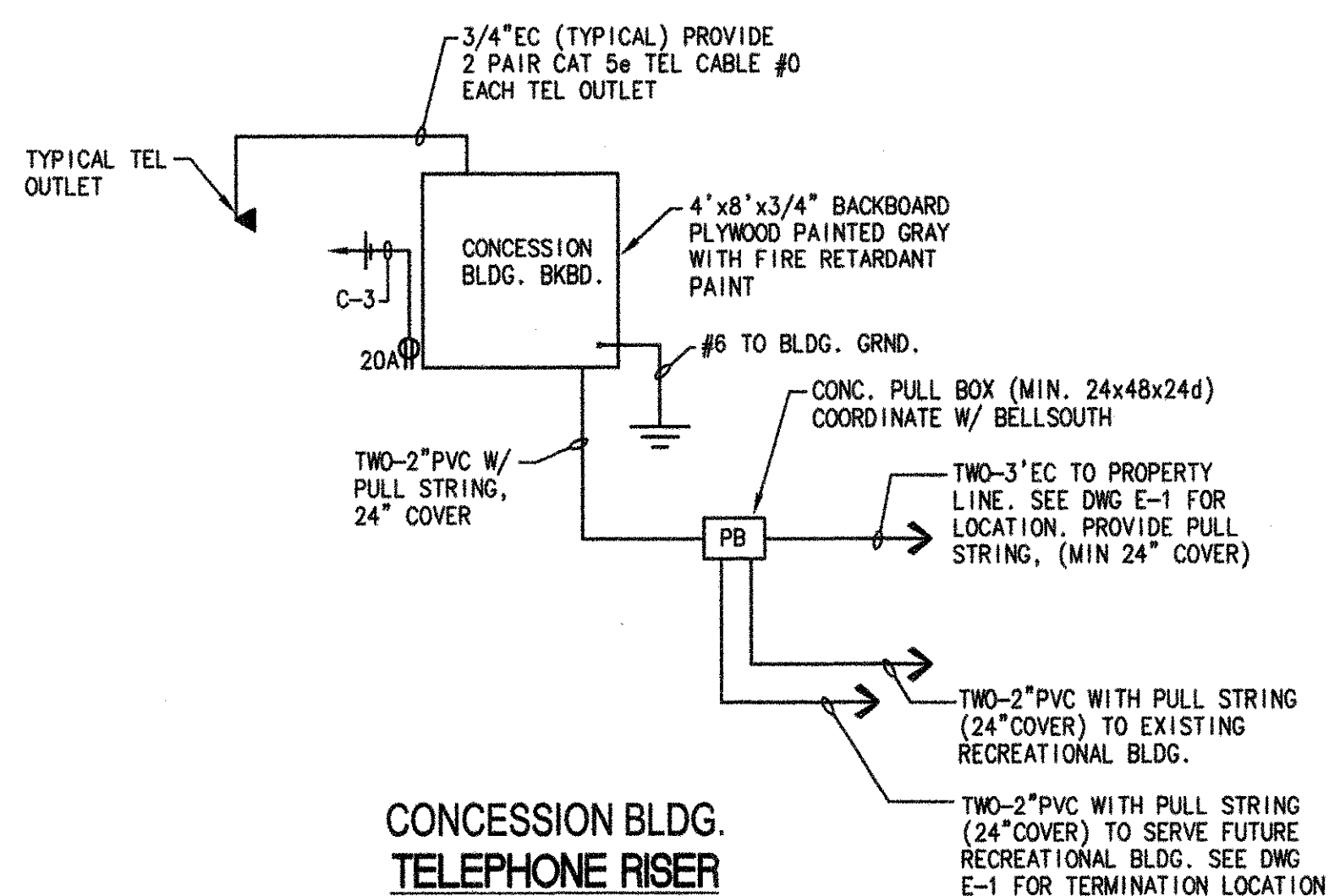


CONCESSION BLDG.
SECOND FLOOR ELECTRICAL PLAN
SCALE: 1/2" = 1'-0"

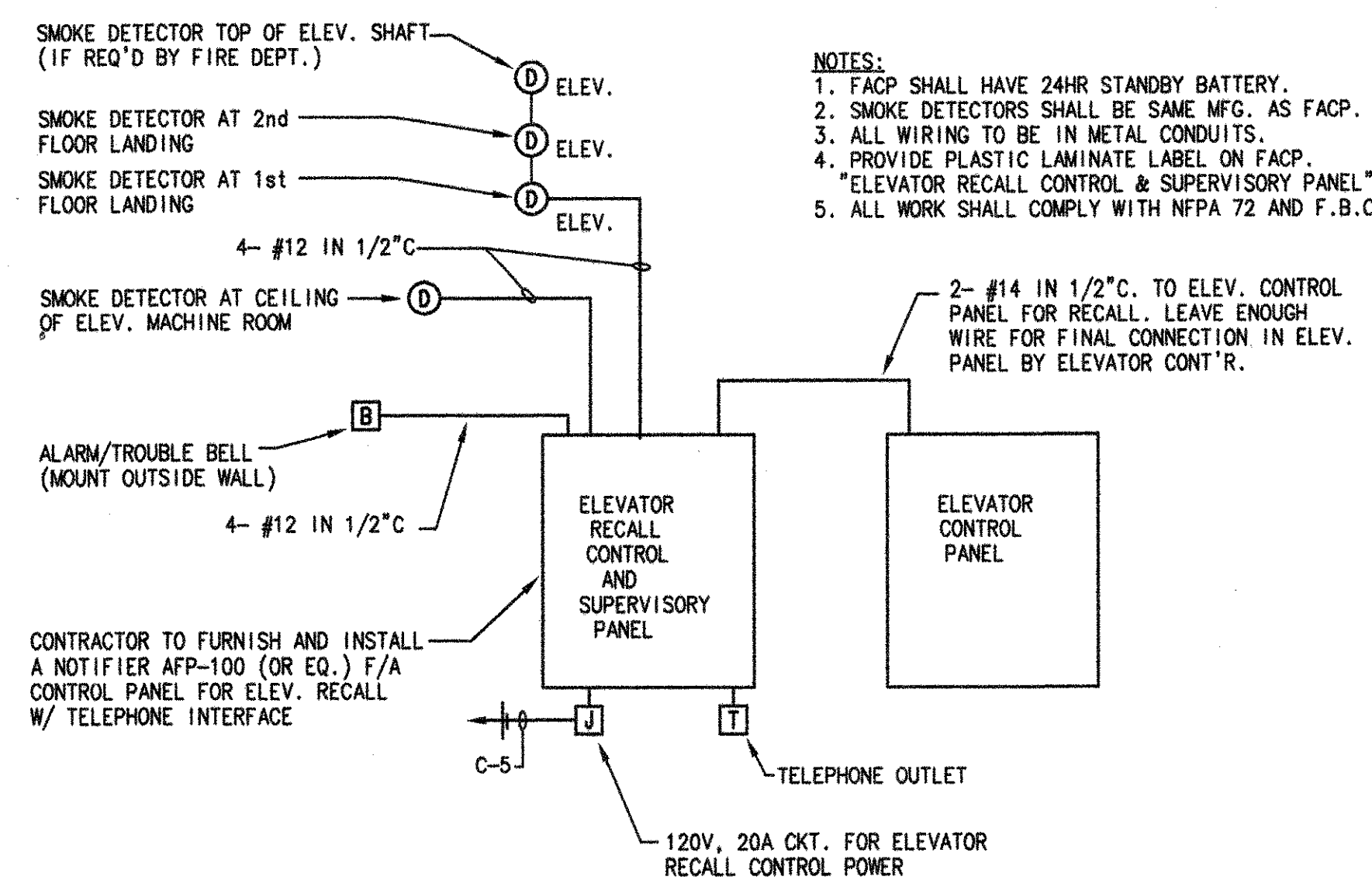


CONCESSION BLDG.
FIRST FLOOR ELECTRICAL PLAN
SCALE: 1/2" = 1'-0"

LIGHTING FIXTURE SCHEDULE (CONCESSION BLDG)					
TYPE	DESCRIPTION	MOUNTING	LAMPS	VOLTS	REMARKS
A	COLUMBIA: 1x4 WRAPAROUND #NCA-232-AB8120	SURFACE (CEILING)	(2) F32 TB	120	
B	KENALL: 1x4, SURF. (HIGH ABUSE) #N1048232EB1120	SURFACE (CEILING)	(2) F32 TB	120	VANDAL RESISTANT
BE	KENALL: 1x4, SURF. (HIGH ABUSE) #N1048-C-232EB-1-120 & B50 BCINE	SURFACE (CEILING)	(2) F32 TB	120	VANDAL RESISTANT W/ EMERGENCY BATTERY PACK (WIRED AS AN SWITCHABLE UNIT)
C	COLUMBIA: 4 FT. FL STRIP, WIRE YARD CS4-232-EBB-120-CSW4	SURFACE (CEILING)	(2) F32 TB	120	
D	KENALL MILLENIUM: MR13FL-PP-MM-42P1-120	SURFACE (CEILING)	42 W PLT	120	VANDAL RESISTANT (1 POSIGRIP SCREWDRIVER)
F	NOT USED				
G	PRESCOLITE: RECESSED D/L #TBX1C / T04S	RECESSED	(1) 26W TRI-TUBE	120	CLEAR ALZAK REFLECTOR, (INSULATED CLG.)
H	HUBBELL: VMX-151/VCG-15 ELEVATOR PIT LIGHT	SURFACE (WALL)	150 W	120	
V	KENALL MILLENIUM FREESTYLE: FS81BR-2TB-P1A-MM-32P2-120	SURFACE (WALL)	(2) 32W PLT	120	VANDAL RESISTANT, (SEE DWGS FOR MTC. HGT)
W	NOT USED				
X	DUAL LITE # L22 EMERGENCY LT. FIXT. WITH BATTERY	SURFACE (WALL)	INCLUDED	120	CONNECT TO UNSWITCHED BRANCH CIRCUIT
XE	DUAL LITE # LXURWE EXIT LT. WITH BATTERY	SURFACE (WALL)	INCLUDED	120	



CONCESSION BLDG.
TELEPHONE RISER
NOTES:
1) COORDINATE ALL WORK WITH BELLSOUTH REPRESENTATIVE PRIOR TO COMMENCEMENT OF WORK



CONCESSION BLDG. ELEVATOR RECALL CONTROL RISER (N.T.S.)

HNGS ENGINEERS
HUFSEY • NICOLAIDES • GARCIA • SUAREZ
CONSULTING ENGINEERS HNGS # 06-0040
10250 SOUTH WEST 65 STREET SUITE B-201
MIAMI, FLORIDA 33165 (305) 270-9935 Fax (305) 270-2286
CARLOS SUAREZ, P.E. (MECHANICAL) FL REG. #0015794
CARLOS GARCIA, P.E. (ELECTRICAL) FL REG. #0014104

THIS DRAWING IS THE INTELLECTUAL PROPERTY OF RECREATIONAL DESIGN & CONSTRUCTION, INC. AND SHALL NOT BE REPRODUCED WITHOUT WRITTEN PERMISSION FROM A PRINCIPAL OF THE FIRM OR BE LIABLE FOR THE FULLEST LEGAL RECOURSE.

JOB NUMBER
06-287
FILE No. :
DRAWN A.C.
REVIEWED A.O.
CHECKED C.G.
DATE 11-21-06
ISSUE/REVISIONS
01/22/07 BLDG. DEPT. COMM.
02/12/07 FIRE DEPT. COMM.
06-05-07 METER REV.

[Signature]
10/14/07

SHEET TITLE
CONCESSION BLDG
1st & 2nd FLOOR ELECTRICAL
PLAN, RISER DIAGRAMS &
LTG FIXTURE SCHEDULE

SHEET NUMBER
E-3 OF 12