

Loudon County Government Request for Proposal

Susan Huskey, CPPB, Purchasing Director
Matt Kleinschmidt, Buyer
100 River Road, Suite 110
Loudon, Tennessee 37774

huskeys@loudoncounty-tn.gov
kleinschmidtm@loudoncounty-tn.gov
Phone 865-458-4663
Fax 865-458-4871

November 8, 2018

Loudon County Government School Custodial Services Bid No. 2018-409

Opening Date: November 28, 2018 - 3:00 P.M.

Addendum 2

The items listed below shall be added to Bid 2018-409. Bidder's must sign and return this addendum with their proposal.

1. **No Contact Policy:** After the date the vendor receives this bid addendum, any contact initiated by any vendor with any Loudon County representative other than the Purchasing Division representatives listed herein, concerning this solicitation is prohibited. Any such unauthorized contact may cause the disqualification of the vendor from this procurement transaction. All Questions must be routed to the Loudon County Purchasing Office to Matt Kleinschmidt. Questions may be faxed to 865-458-4871 or emailed to kleinschmidtm@loudoncounty-tn.gov.
2. **Questions Cut off Date:** The last day for questions to be asked is November 20, 2018. Questions must be asked on or before this date.
3. Are your services provided through franchises? ___ Yes ___ No
4. **Building Square Footages:** A list of updated square footages for each school is attached to this addendum. This will replace the square footages listed in Addendum 1. Not all of the square feet for each building is cleanable space.
5. **Attachments:** Building layouts for each school, school populations, estimated school events and the current contract value of the current contract are attached.

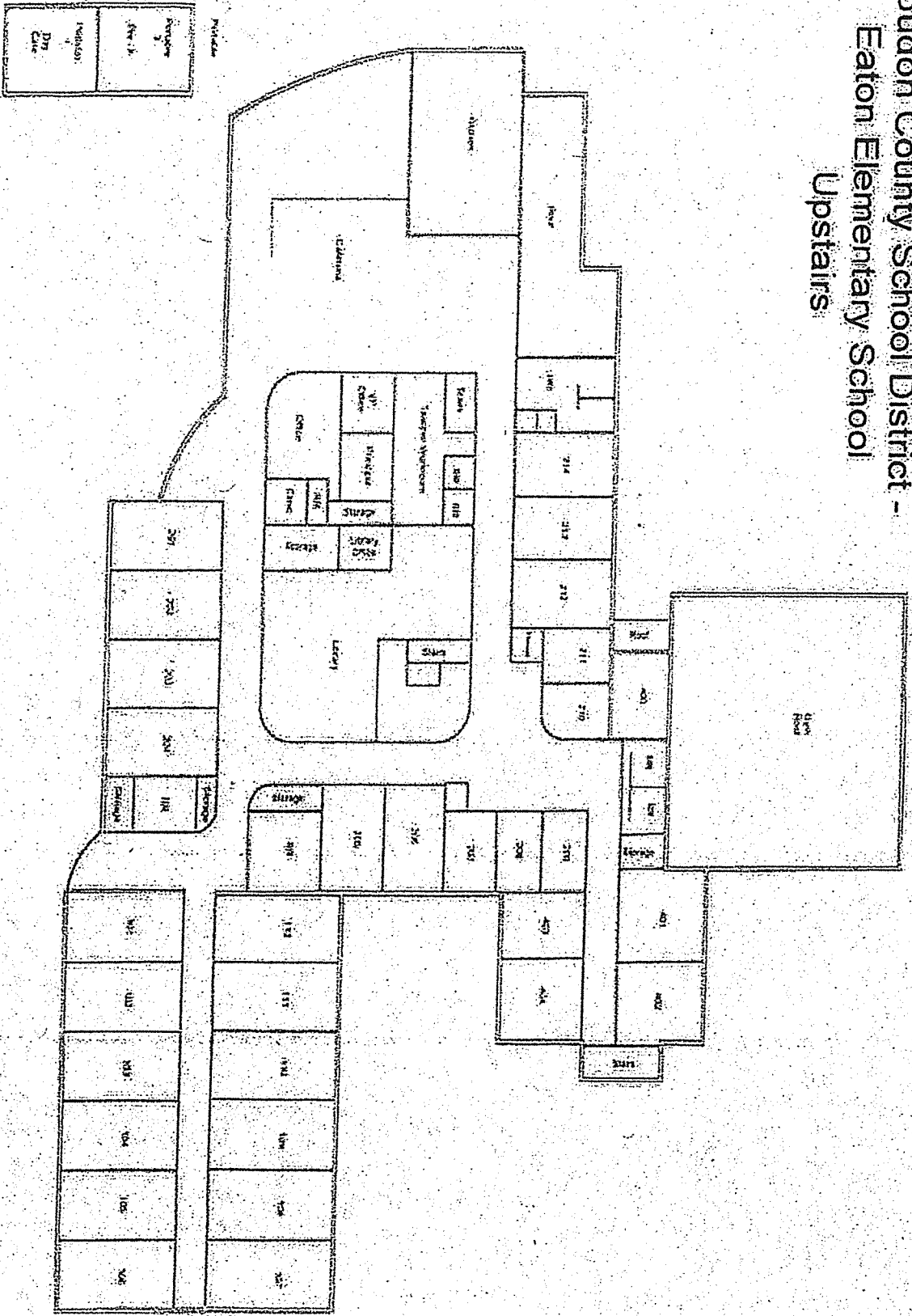
Company Name: _____

Authorized Person: _____

Authorizing Signature _____

Date: _____

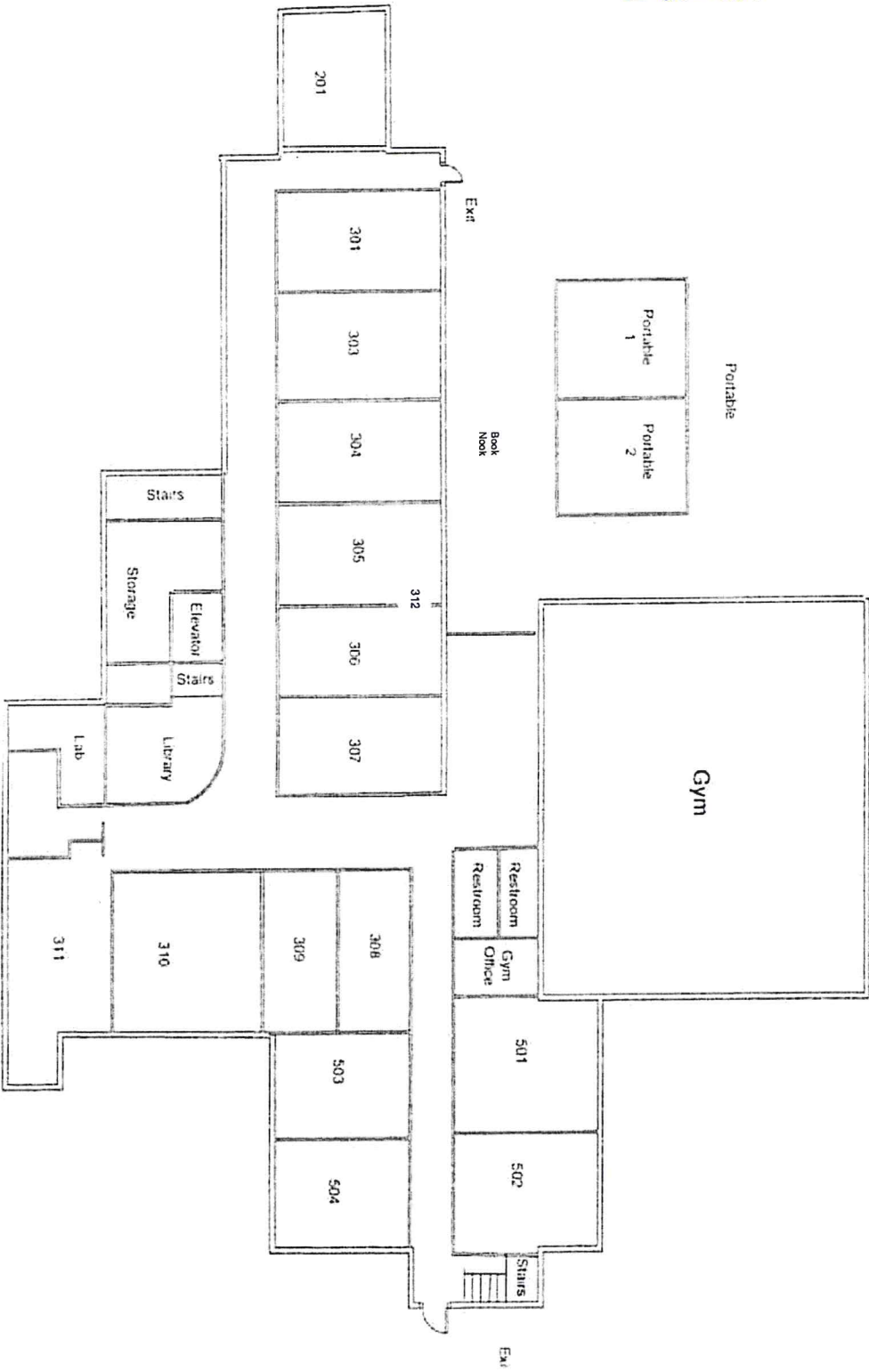
Loudon County School District - Eaton Elementary School Upstairs



Room	250	240	230	220	210	200
Room	190	180	170	160	150	140
Room	130	120	110	100	90	80

Lynnville Community School District - Lawn Elementary School
Downstairs (Page 2 of 2) - Current Configuration

Eaton



Fort Loudoun Middle School
Loudon County School District

Fire **E** Extinguisher Map

Ball Fields >

Front
Parking Lot

Bus
Pickup/
Drop Off

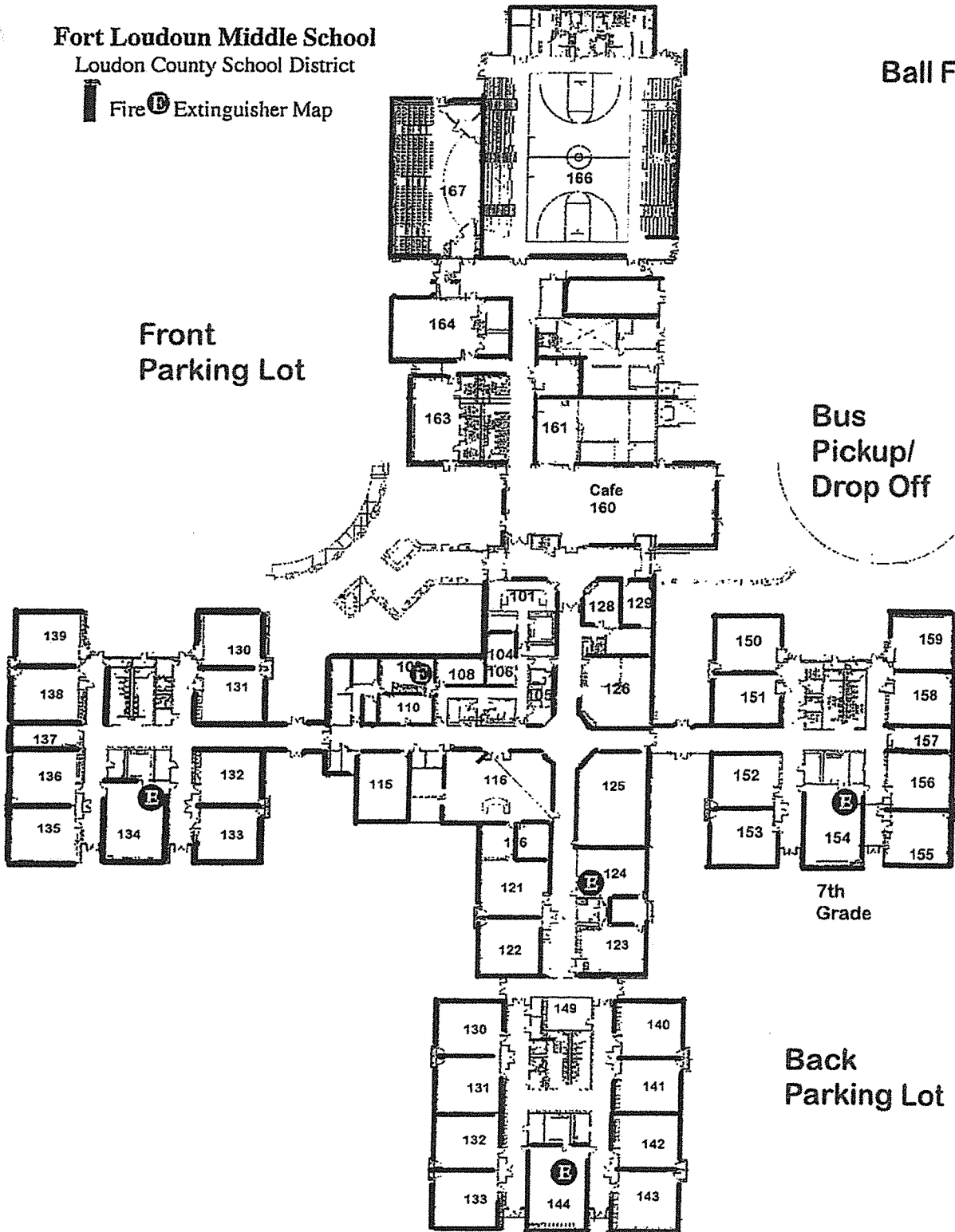
6th
Grade

7th
Grade

Back
Parking Lot

8th
Grade

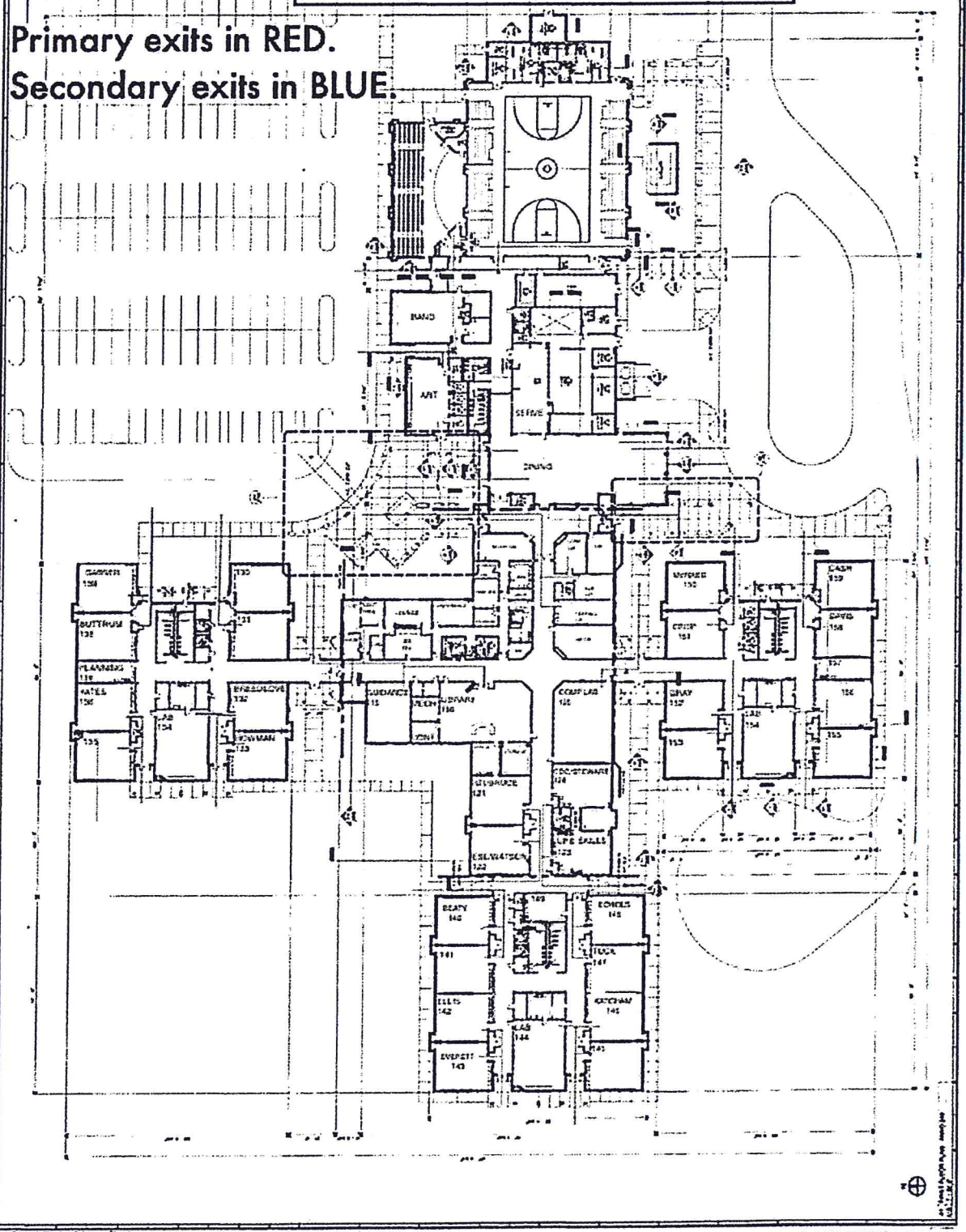
Loudon County Maintenance Department



FL Loudoun

FIRE ESCAPE ROUTES

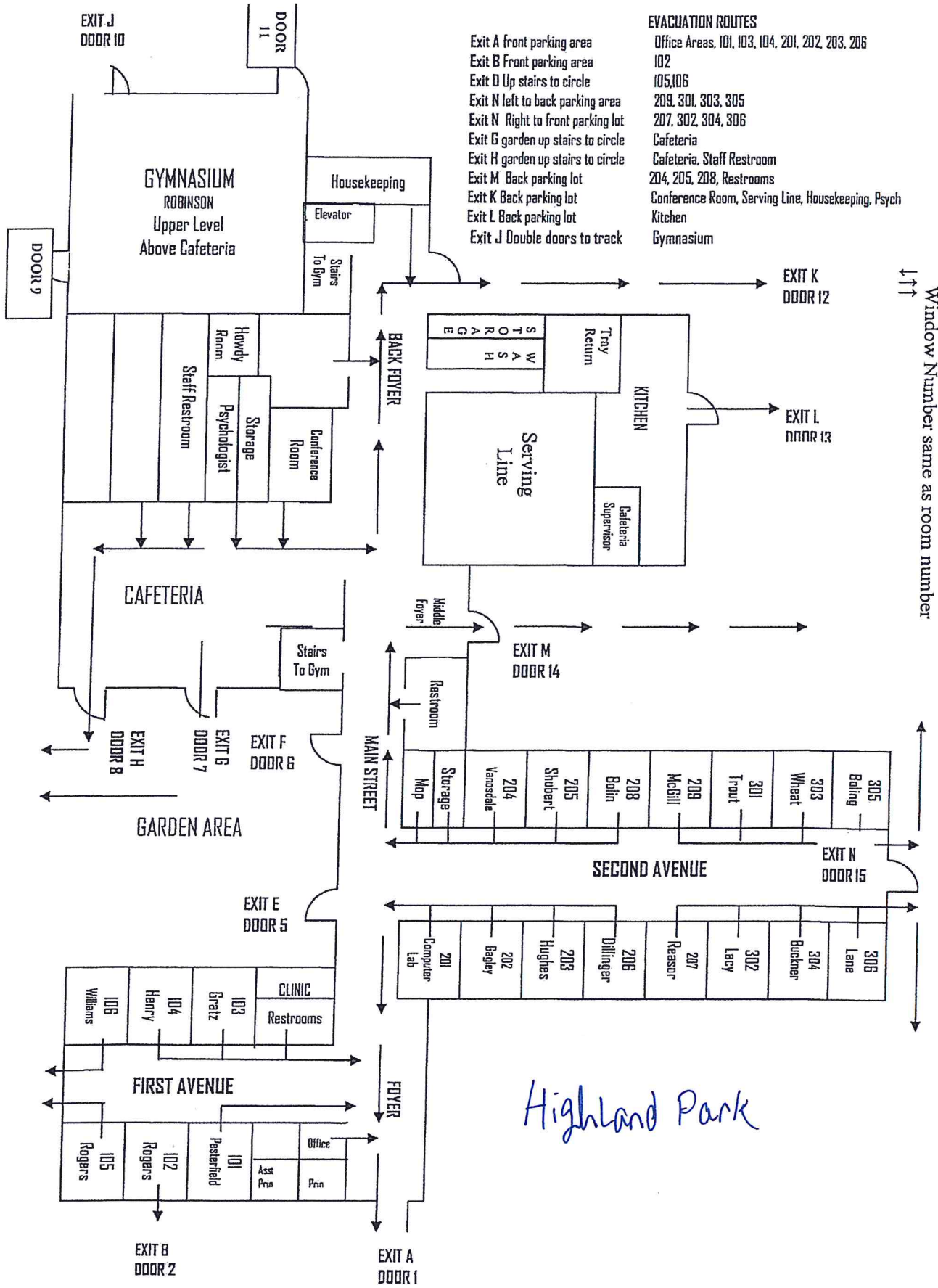
Primary exits in RED.
Secondary exits in BLUE.



EVACUATION ROUTES

- Office Areas, 101, 103, 104, 201, 202, 203, 206
- 102
- 105, 106
- 209, 301, 303, 305
- 207, 302, 304, 306
- Cafeteria
- Cafeteria, Staff Restroom
- 204, 205, 208, Restrooms
- Conference Room, Serving Line, Housekeeping, Psych
- Kitchen
- Gymnasium

- Exit A front parking area
- Exit B Front parking area
- Exit D Up stairs to circle
- Exit N left to back parking area
- Exit N Right to front parking lot
- Exit G garden up stairs to circle
- Exit H garden up stairs to circle
- Exit M Back parking lot
- Exit K Back parking lot
- Exit L Back parking lot
- Exit J Double doors to track



EXIT J
DOOR 10

DOOR
11

GYMNASIUM
ROBINSON
Upper Level
Above Cafeteria

Housekeeping

Elevator

Stairs
To Gym

DOOR
9

Howdy
Room

Staff Restroom

Psychologist

Storage

Conference
Room

BACK Foyer

STORAGE
WASH
Troy
Return

KITCHEN

Serving
Line

Cafeteria
Supervisor

EXIT K
DOOR 12

EXIT L
DOOR 13

CAFETERIA

Stairs
To Gym

Middle
Foyer

EXIT M
DOOR 14

Restroom

EXIT H
DOOR 8

EXIT G
DOOR 7

EXIT F
DOOR 6

GARDEN AREA

MAIN STREET

Storage

Map

Vansdale

204

Shubert

205

Bolin

208

McSill

209

Trout

301

Wheat

303

Boling

305

SECOND AVENUE

EXIT N
DOOR 15

Computer
Lab

201

Engley

202

Hughes

203

Dillinger

206

Reasor

207

Lacy

302

Buckner

304

Lane

306

FIRST AVENUE

FOYER

106
Williams

104
Henry

103
Grazz

CLINIC

Restrooms

101

Office

Pin

105
Rogers

102
Rogers

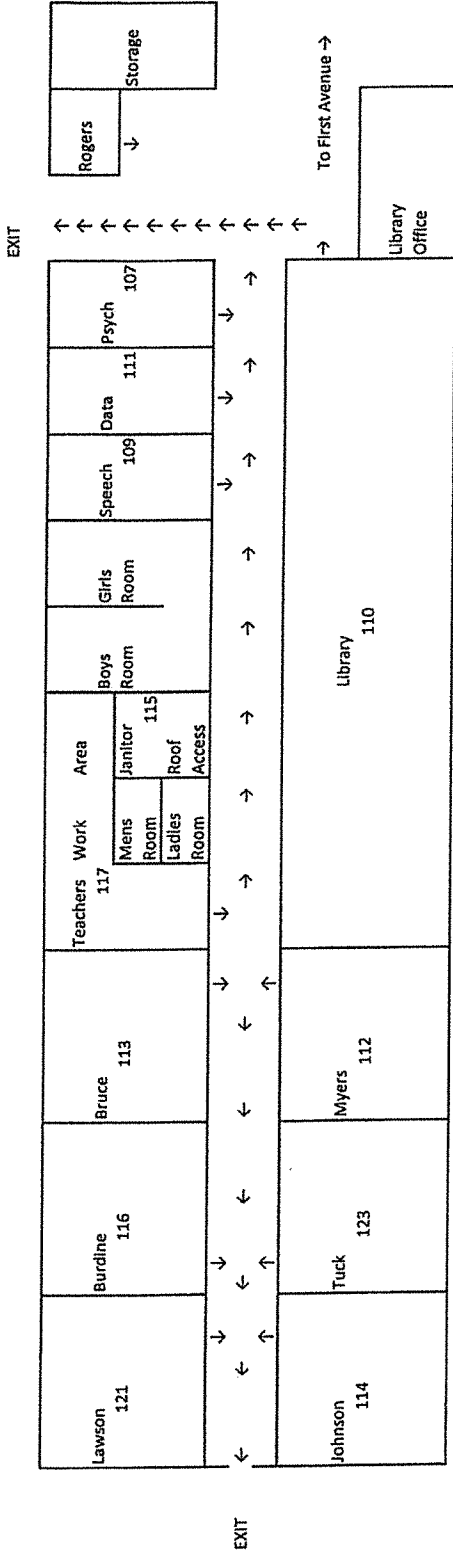
101
Pesterfield

Office

Pin

EXIT B
DOOR 2

EXIT A
DOOR 1



Rooms 121,116,113,114,123,112
 Rooms 117,115,109,111,107,110

Exit to Driveway

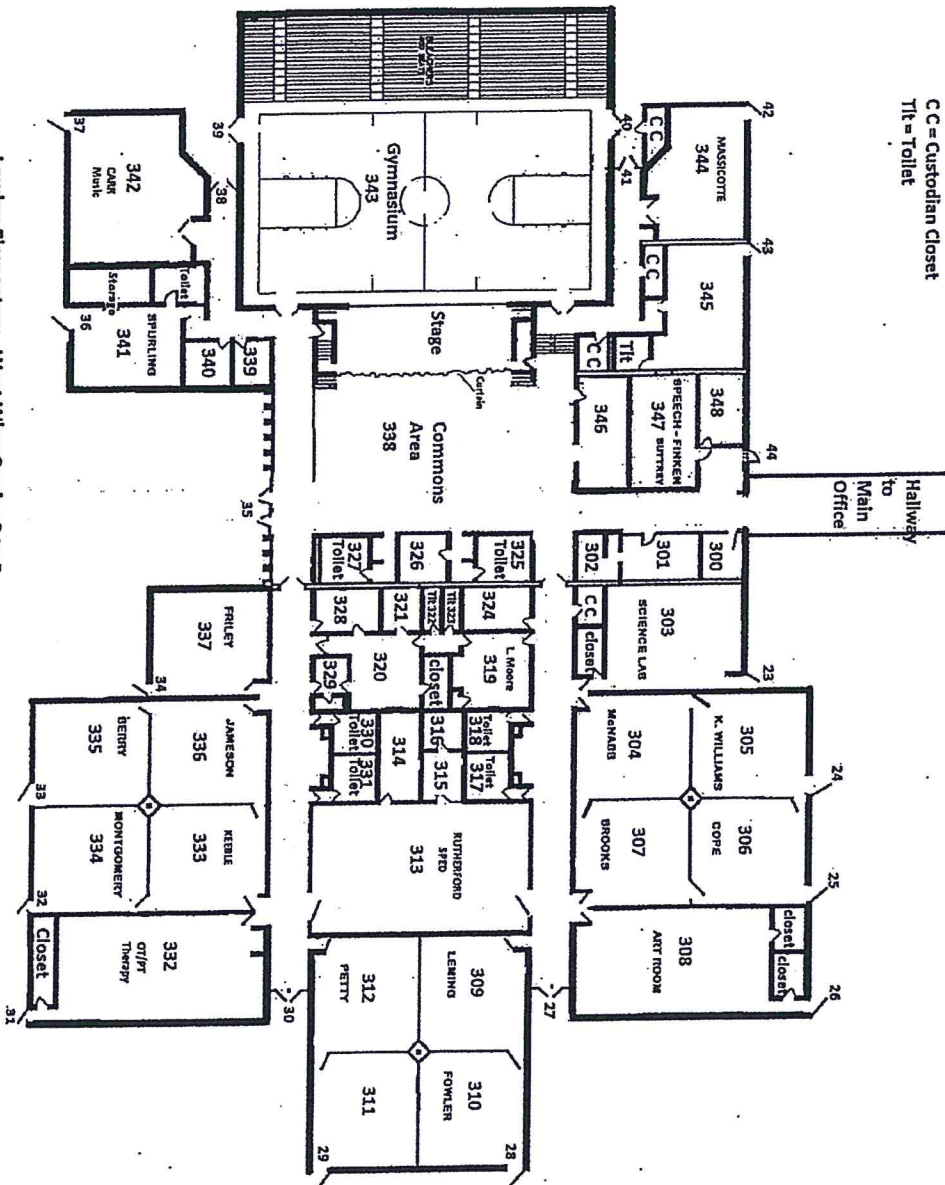
Exit Up Stairs to Circle

Highland Park

Loudon Elementary

LES 2018-2019 SCHOOL YEAR

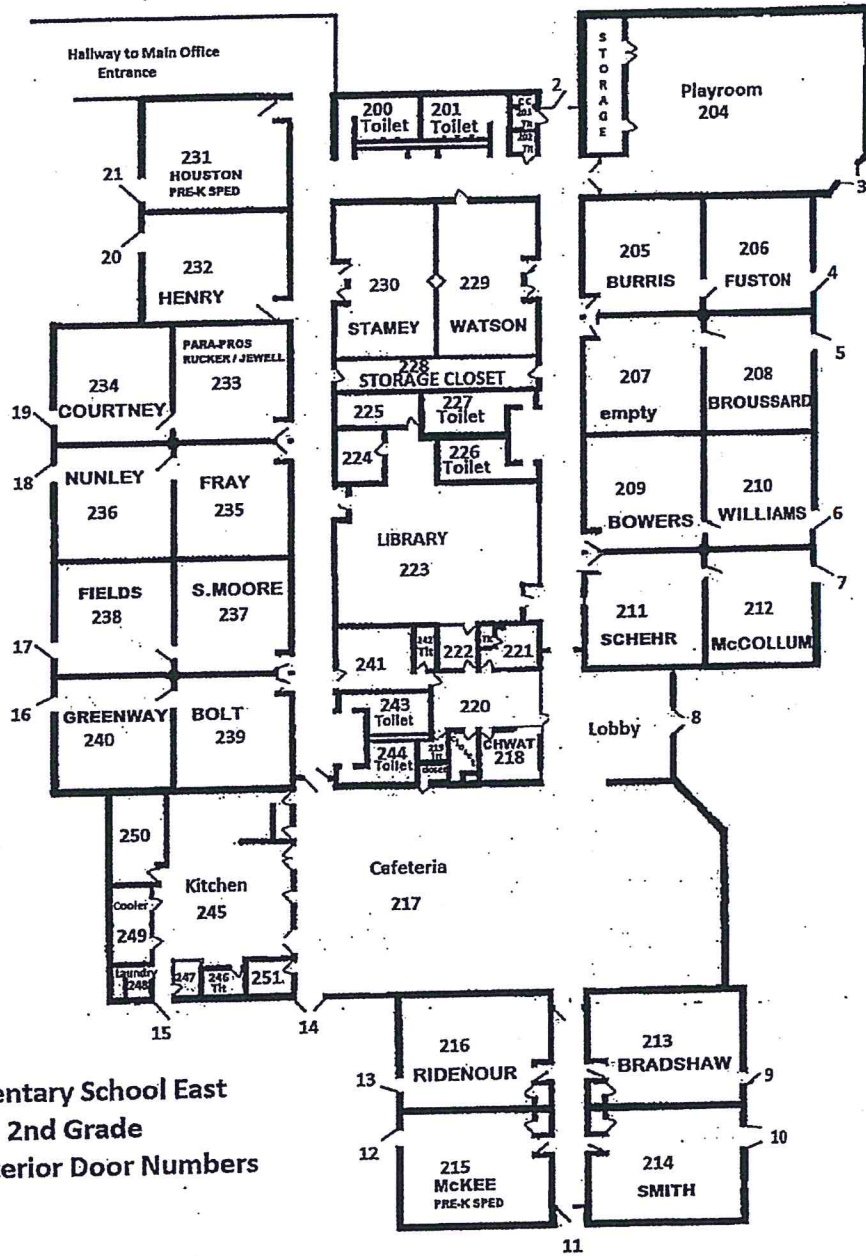
C C = Custodian Closet
Ttl = Toltet



Loudon Elementary - West Wing Grades 3 to 5
ROOM AND EXTERIOR DOOR NUMBERS

Loudon Elementary

LES 2018-2019 SCHOOL YEAR



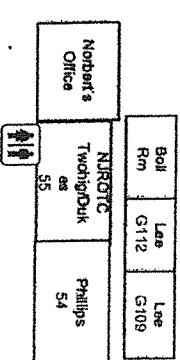
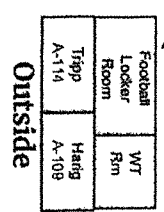
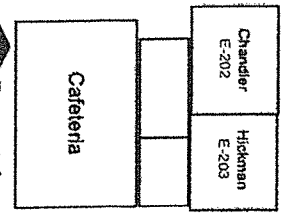
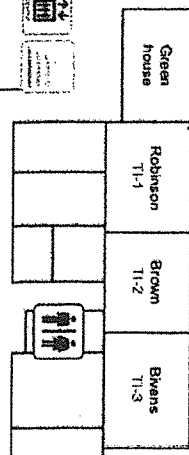
Loudon Elementary School East Wing Pre-K to 2nd Grade Room and Exterior Door Numbers



Loudon High School

2018-2019

Behind Practice Field

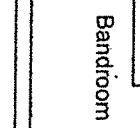
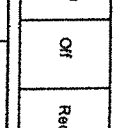
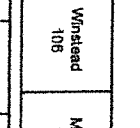
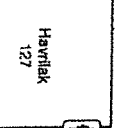
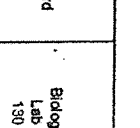
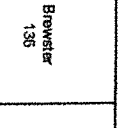
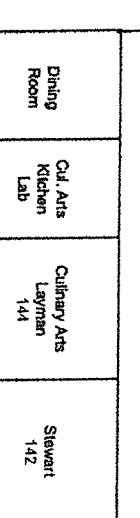
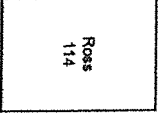
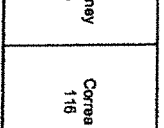
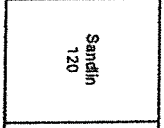
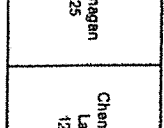
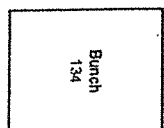
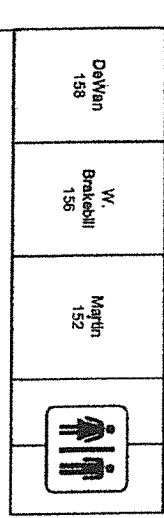
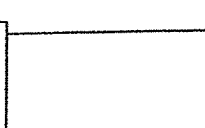
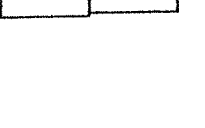
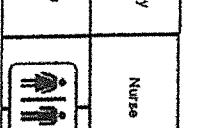
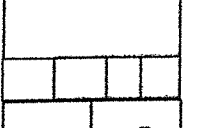
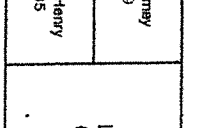
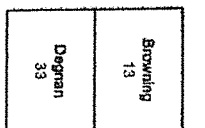
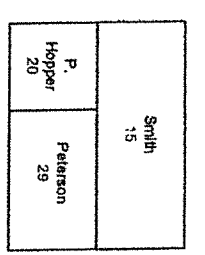
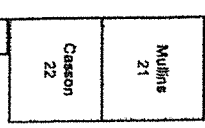
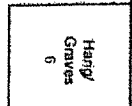
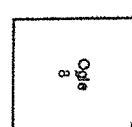
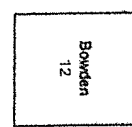
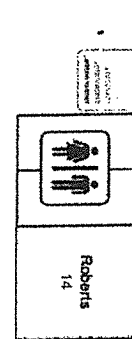
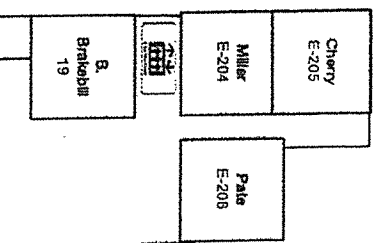


Downstairs

Outside

Downstairs

Guidance



Main Office

Philadelphia Elementary School

Academic Parent-Teacher Teams

Parent Conferences

4:00 – 4:15 Round Robin 1

4:20 – 4:35 Round Robin 2

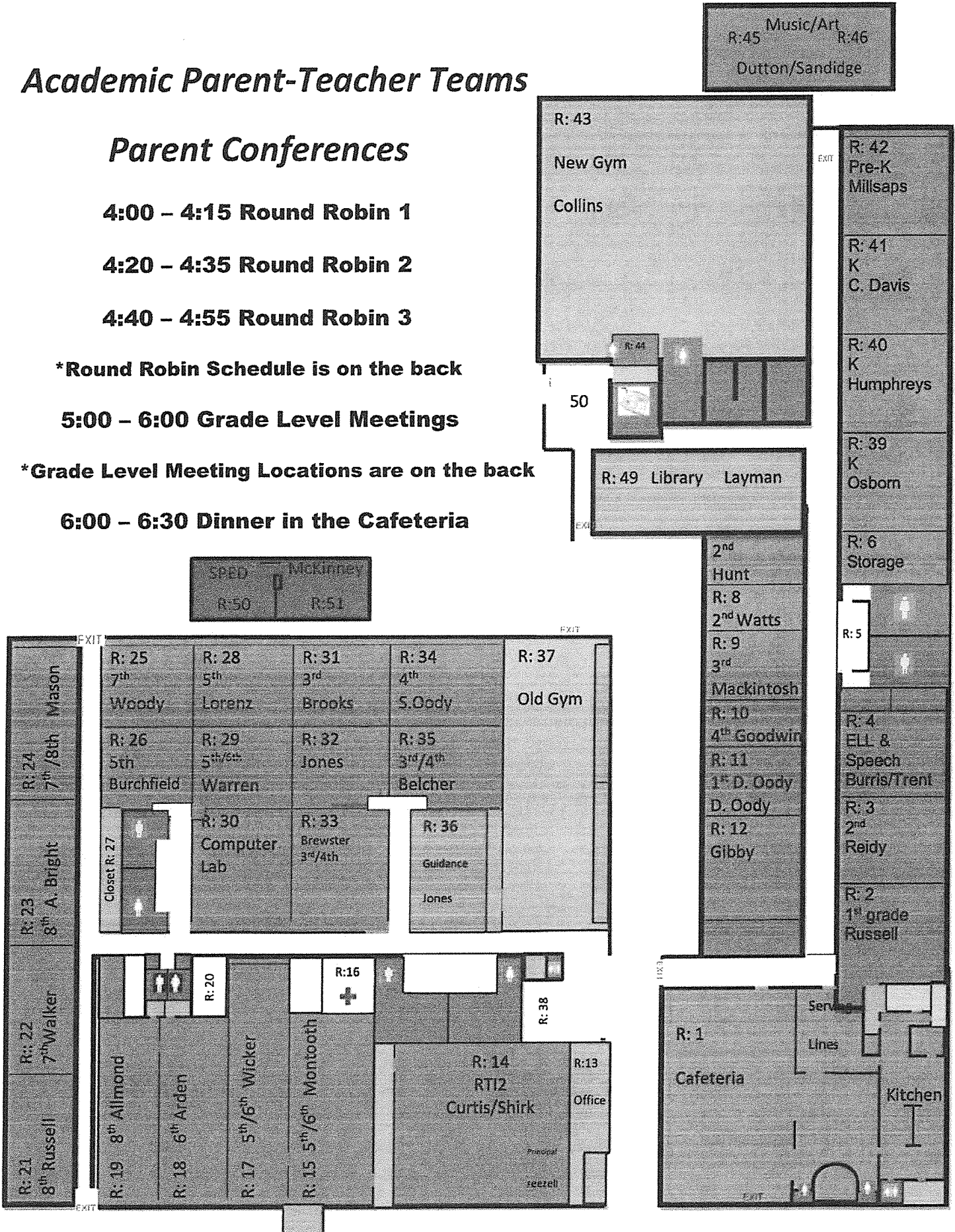
4:40 – 4:55 Round Robin 3

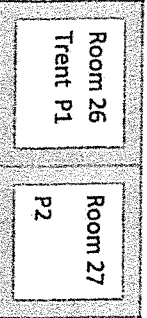
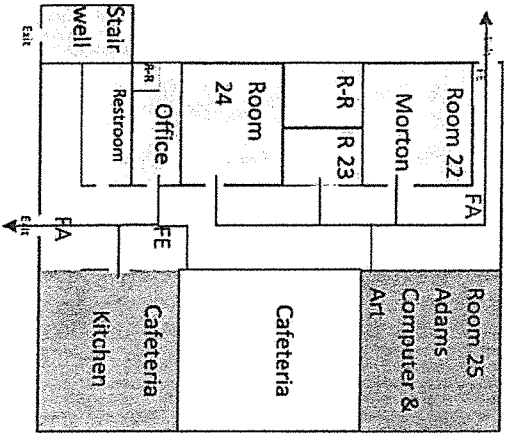
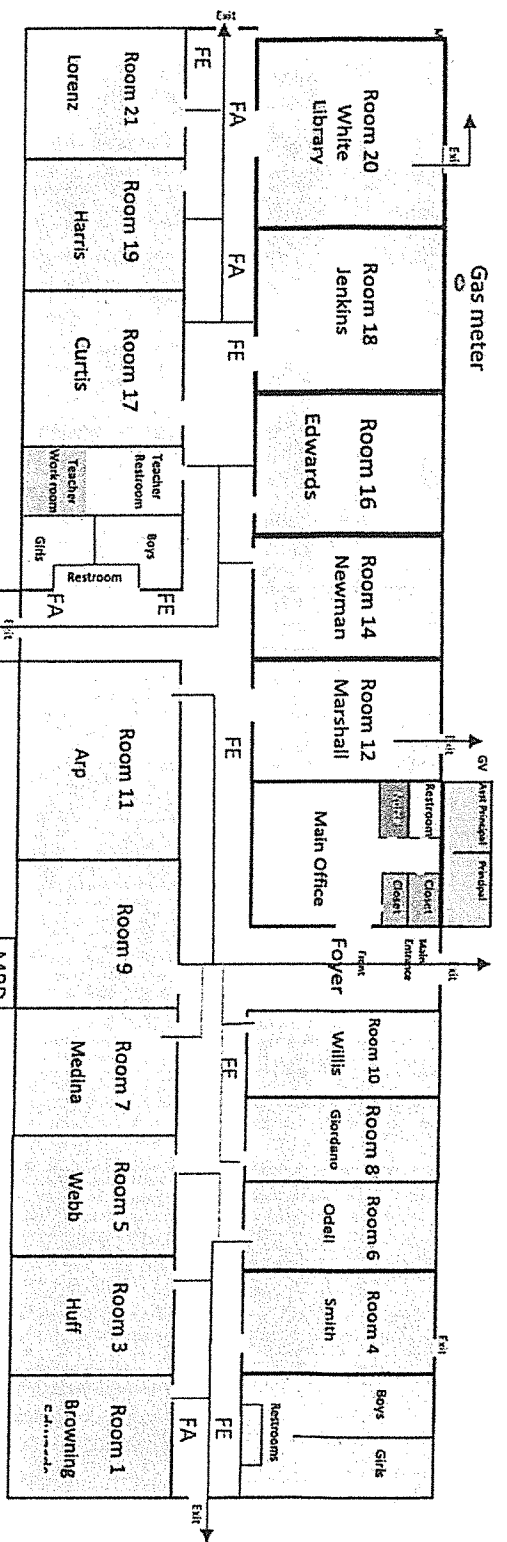
***Round Robin Schedule is on the back**

5:00 – 6:00 Grade Level Meetings

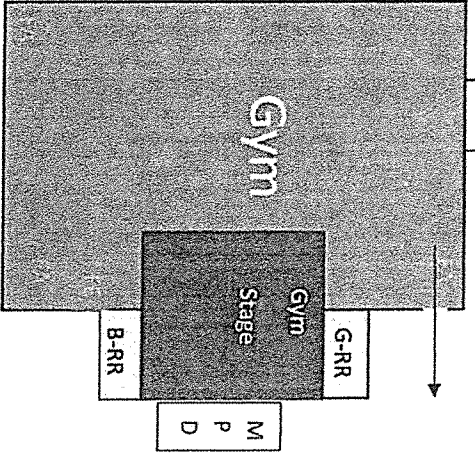
***Grade Level Meeting Locations are on the back**

6:00 – 6:30 Dinner in the Cafeteria





P1 & P2 will exit and go to the field by the Prek lot.



- == Restrooms
- == Classrooms
- FE == Fire Extinguisher
- FA == Fire Alarm
- MPD == Main Power
- == Disconnect

Steekee Elementary

Fire Exits

Loudon County Schools
Square Footage of School Buildings

These numbers are total square feet for our buildings as covered by insurance. This does not necessarily represent the amount of square feet that would be required for cleaning space.

Eaton Elementary:	76,273 sq. ft., 1 portable 1,500 sq. ft.
Ft. Loudoun Middle:	96,180 sq. ft.
Greenback School:	183,909 sq. ft., Field House 3,600 sq. ft.
Highland Park Elem.:	59,674 sq. ft.
Loudon Elementary:	86,280 sq. ft.
Loudon High:	155,230 sq. ft., includes CTE bldg. and Field House
Loudon Tech Center:	40,936 sq. ft.
North Middle:	92,710 sq. ft.
Philadelphia Elem:	73,909 sq. ft. 2 portables @ 1,500 sq. ft. each
Steekee Elem:	51,431 sq. ft., 1 portable @ 1,500 sq. ft.
Central Office:	21,558 sq. ft.

Student Population

Eaton Elementary	716
Ft. Loudoun Middle	351
Greenback School	676
Highland Park Elem.	409
Loudon Elementary	531
Loudon High	728
North Middle	754
Philadelphia Elem.	457
Steekee Elem.	243
Total:	4,863

Estimated Events per School per Year

Eaton Elementary	60
Ft. Loudoun Middle	35-40
Greenback School	50
Highland Park Elem.	35-40
Loudon Elementary	Fewer than 10
Loudon High	60-70
North Middle	45
Philadelphia Elem.	30
Steekee Elem.	40

Value of Current Contract

\$879,836 base contract

\$21,000 additional day porter

\$900,836 total