

ADDENDUM #2
ALLEN AVENUE SANITARY SEWER REPLACEMENT GP-1332 PART 1
14TH STREET WATERLINE REPLACEMENT PART 2
CITY OF CANTON

DATE OF ADDENDUM

Friday, February 11, 2022

BID OPENING

Thursday, February 17, 2022
at 2:00 P.M. local time

This Addendum shall become part of and modify the original Contract Documents for the above referenced project. The Bidder shall verify receipt of this Addendum, thereby acknowledging that the contractor is fully aware of the contents found herein.

This Addendum is being issued to provide additional clarification on the plan sheets, additional information related to the project including plan notes and details, and to respond to questions submitted by Bidder's during the written question's submittal period.

1.1 BIDDER'S QUESTION

- A. The sanitary manhole quantities on the general summary do not match the bid form quantities. Please advise. **The bid proposal form was adjusted and now matches the general summary.**
- B. On sheet #12 there are (2) proposed catch basins to be installed. How will the contractor be paid for these and what type of catch basin does the owner want? **The quantity for Item #35 has been adjusted. The type of catch basin will be dependent on the location. See Office of the City Engineer Standard Drawings included with this addendum.**
- C. The quantity for 10" conduit type "B" on sheet #26 is incorrect. The quantity needs adjusted accordingly on the general summary and the bid form. **Yes, the quantity was updated.**
- D. There are numerous locations throughout the project that will require existing 8" conduits to be reconnected. Will the contractor be paid for this work on the provided bid items? **Yes, the provided bid items include the quantities for reconnection.**
- E. On sheet #14 @ MH-5, the plans state to reconnect the existing 21" sanitary. Are we to include this work the manhole item? **The cost to reconnect the existing 21" sanitary shall be included in the provided bid items.**
- F. On sheet #15 there are (3) sanitary laterals to be reconnected at station 15+14, 15+15 and 15+42. Will these require a stack connection to meet the existing grade of the sewer? **Yes, lateral labels and stacks have been added and quantities revised.**
- G. On sheet #23 @ MH-24, are we required to reconnect the existing 8" north? **Yes.**
- H. On sheet #26 @ approximately station 10+20, it states to replace curb inlet and 10' of 54" storm sewer. Will the replacement of the 54" storm sewer really be required since it will be below the invert of the proposed sanitary? If so, can a bid item be added. **Replace curb inlet and make a structurally sound watertight connection to the existing 54" storm.**
- I. On sheet #27 @ MH-31, are we required to reconnect the existing 8" south? **Yes.**
- J. Since there is no bid item for 6" conduit abandoned / grouted, will this be required for the locations throughout the project? **Refer to Bid Item #26**

On sheet #11 (water plans) it shows a 6" water service on Willet Avenue. Is this a new service or a reconnection to existing? Will a valve be required? **This is the reconnection of an existing water**

ADDENDUM #2

1

service. We have added a valve for isolation, and it's reflected in the general summary and the bid proposal form.

- L. On sheet #9 (water plans), there appears (4) 8" 45 degree bends were unaccounted for. Yes, they have been added.
- M. On sheet #6 (water plans), there appears (1) 8"x6" cross and (1) 6" gate valve has been unaccounted for. An additional cross and 6" gate valve have been included in the bid proposal form and general summary.
- N. What is the requirement on bedding for water mains? Detail shows 703.11 but doesn't specify what type. All types of 703.11 are acceptable.
- O. There is no detail showing the composition of the existing pavement at each location, nor is there a pavement restoration detail provided for each street and alley. Can this be provided for bidders? Pavement shall be repaired per Office of the City Engineer Standard Drawings 31 & 32 and the Mill & Overlay Detail.
- P. Please clarify what reference #42 is to be used for? There is no detail that shows where this is to be used. Office of the City Engineer Canton Standard Drawing 32.
- Q. Reference #2 Subgrade Compaction quantity matches the 1-1/2" milling pay item. Can you please confirm where Subgrade Compaction will be required? The actual location and quantity of compaction will be determined during construction.
- R. Plan Sheets 10 & 11 show milling all the streets (asphalt, brick, concrete, and alleys), and placing 1-1/2" asphalt. Is this the intent? Yes, it is the intent to mill 1.5" of the existing streets shown on Plan Sheets 10 & 11.
- S. The trench replacement for the water portion of the project has a bid item for non reinforced concrete pavement. The existing pavement conditions according to the soil report, shows asphalt with a concrete base. Are we to bring the concrete flush with the existing pavement then mill and overlay under the sewer portion of the project? Please advise. Yes.
- T. The specs say that the City will do the testing. Does that include the 611 compaction testing? No. The City will not be performing the 611 compaction testing.
- U. What is the intention for testing the Sanitary Sewer? Air testing will not be required where active laterals are connected. Since there is a by-pass pumping item is the intent to Air test and then hook up the existing laterals? No
 - a. Are we hooking up the sanitary laterals and just doing tv & deflection testing? Sanitary laterals will be connected during the main line construction.
 - b. Specs say to also air test. Please advise. Air testing will not be required where active laterals are connected.
- V. Is the pavement/excavation removal SF or CY - Plan summary states one & proposal states another. This is in error. This is corrected on the revised plan sheet 5 of 46.

1.2 REPLACE THE FOLLOWING PAGES IN THE ORIGINAL INVITATION TO BID WITH THOSE ATTACHED TO ADDENDUM 2:

- 1. Bidder's Sheets
- 2. Sheets 5, 13, 15, 23, 26 & 38 for Part 1: GP-1332
- 3. Sheets 4, 9, 11, & 12 for Part 2: 14th Street Waterline

END OF ADDENDUM #2

ADDENDUM #2

2

ALLEN AVENUE SE AREA SANITARY SEWER AND WATERLINE PROJECT, G.P. 1332

Bidder's Sheet

We (I), the above signed hereby propose to furnish the following article(s) and/or service(s) at the price(s) and terms stated subject to all instructions, conditions, specifications, and all attachments hereto. We (I) have read all attachments including the specifications and fully understand what is required.

PART 1: ALLEN AVENUE SE SANITARY SEWER REPLACEMENT								
REF. NO.	ODOT ITEM NUMBER	ITEM DESCRIPTION	ESTIMATED QUANTITY	UNIT	UNIT MATERIAL PRICE \$	UNIT LABOR COST \$	UNIT COST \$	ITEM TOTAL PRICE \$
ROADWAY								
1	203	PAVEMENT REMOVAL/EXCAVATION	7,337	SY				
2	204	SUBGRADE COMPACTION	22,011	SY				
ROADWAY TOTAL =								
SANITARY								
3	611	30" CONDUIT, TYPE B (707.48), APP	3,256	LF				
4	611	18" CONDUIT, TYPE B, (707.48), APP	177	LF				
5	611	10" CONDUIT, TYPE B, (707.45), APP	1,593	LF				
6	611	8" CONDUIT, TYPE B, (707.45), APP	1,958	LF				
7	611	8" CONDUIT, TYPE B PVCO PIPE AND FITTINGS, AWWA C900, APP	840	LF				
8	611	10" CONDUIT, TYPE B PVCO PIPE AND FITTINGS, AWWA C900, APP	30	LF				
9	611	48" CASING PIPE, JACK AND BORED INCLUDING BORE & RECEIVING PITS, COMPLETE	465	LF				
10	611	48" DIA. MANHOLE, COMPLETE	23	EA				
11	611	60" DIA. MANHOLE, COMPLETE	15	EA				
12	611	72" DIA. MANHOLE, COMPLETE	2	EA				
13	611	8" CONDUIT, TYPE B, (707.45), OUTSIDE DROP PIPE CONNECTION, COMPLETE, APP	15	EA				
14	611	SANITARY LATERAL RECONNECTED (8"), COMPLETE, APP	80	LF				

ALLEN AVENUE SE AREA SANITARY SEWER AND WATERLINE PROJECT, G.P. 1332
Bidder's Sheet

15	611	SANITARY LATERAL RECONNECTED (10"), COMPLETE, APP	160	LF				
16	611	SANITARY LATERAL RECONNECTED (30"), COMPLETE, APP	190	LF				
17	611	SANITARY WYE (8"), COMPLETE, APP	12	EA				
18	611	SANITARY WYE (10"), COMPLETE, APP	18	EA				
19	611	SANITARY WYE (30"), COMPLETE, APP	10	EA				
20	611	SANITARY LATERAL STACK CONNECTION PIPE RECONNECTED, APP	213	LF				
21	611	8"x6" TEE FOR SANITARY STACK, APP	4	EA				
22	611	10"x6" TEE FOR SANITARY STACK, APP	14	EA				
23	611	30"x6 TEE FOR SANITARY STACK, APP	23	EA				
24	611	SANITARY SEWER BYPASS PUMPING (DIAMETER UP TO 12"), APP	1	LS				
25	611	SANITARY SEWER BYPASS PUMPING (DIAMETER LARGER THAN 12"), APP	1	LS				
26	202	PLUG 8" AND SMALLER EXISTING CONDUIT	31	EA				
27	202	ABANDON MISC,: SANITARY MANHOLE, APP	21	EA				
28	202	ABANDON MISC.: GROUT ABAND. 8" CONDUIT, APP	400	LF				
29	202	ABANDON MISC.: GROUT ABAND. 12" CONDUIT, APP	360	LF				
30	202	ABANDON MISC.: GROUT ABAND. 18" CONDUIT, APP	175	LF				
31	202	ABANDON MISC.: GROUT ABAND. 20" CONDUIT, APP	735	LF				
32	202	ABANDON MISC.: GROUT ABAND. 24" CONDUIT, APP	805	LF				
33	638	REBUILD HYDRANT ASSEMBLY	1	EA				
SANITARY TOTAL =								

ALLEN AVENUE SE AREA SANITARY SEWER AND WATERLINE PROJECT, G.P. 1332
Bidder's Sheet

DRAINAGE								
34	611	12" STORM SEWER CONDUIT, APP	85	LF				
35	611	CATCH BASIN, STORM MANHOLE, OR INLET REPLACEMENT, APP	7	EA				
36	611	12" STORM SEWER REPLACEMENT, APP	20	LF				
37	611	15" STORM SEWER REPLACEMENT, APP	110	LF				
38	611	18" STORM SEWER REPLACEMENT, APP	85	LF				
39	611	MANHOLE, CATCH BASIN, OR INLET RECONSTRUCTED TO GRADE (STORM), APP	1	EA				
40	611	MANHOLE, CATCH BASIN, OR INLET ADJUSTED TO GRADE, APP	1	LS				
DRAINAGE TOTAL =								
PAVEMENT								
41	611	6" AGGREGATE BASE, APP	1,098	CY				
42	301	4" ASPHALT CONCRETE BASE, APP	735	CY				
43	305	CONCRETE BASE, CLASS QC1 (FOR EXISTING CONCRETE STREETS), APP	1,378	CY				
44	407	TACK COAT AT 0.1 GAL/SY, APP	666	GAL				
45	441	1-1/2" ASPHALT CONCRETE INTERMEDIATE COURSE, TYPE 1, APP	283	CY				
46	441	1-1/2" OVERLAY OF ASPHALT CONCRETE SURFACE COURSE, TYPE 1, APP	917	CY				
47	441	1-1/2" MILL, APP	22,011	SY				
48	609	CONCRETE SIDEWALK ALLOWANCE, APP	1,000	SF				
49	609	CONCRETE CURB ODOT TYPE 6, APP	375	LF				
50	609	CURB RAMPS, TYP., COMPLETE	32	EA				
PAVEMENT TOTAL =								

ALLEN AVENUE SE AREA SANITARY SEWER AND WATERLINE PROJECT, G.P. 1332
Bidder's Sheet

INCIDENTALS								
51	SPEC.	PRECONSTRUCTION ABOVE GROUND VIDEOTAPING, COMPLETE	1	LS				
52	624	MOBILIZATION / DEMOBILIZATION	1	LS				
53	614	MAINTAINING TRAFFIC, COMPLETE	1	LS				
54	623	CONSTRUCTION LAYOUT STAKING & SURVEYING	1	LS				
55	832	STORMWATER POLLUTION PREVENTION PLAN	1	LS				
INCIDENTALS TOTAL =								
PART 1 TOTAL =								
PART 2: 14TH STREET WATERLINE PROJECT								
REF. NO.	ODOT ITEM NUMBER	ITEM DESCRIPTION	ESTIMATED QUANTITY	UNIT	UNIT MATERIAL PRICE \$	UNIT LABOR COST \$	UNIT COST \$	ITEM TOTAL PRICE \$
WATERWORKS								
56	638	REMOVE VALVE & VALVE BOX	2	EA				
57	638	ABANDON VALVE - TURN OFF VALVE & REMOVE VALVE BOX	3	EA				
58	638	FIRE HYDRANT AND GATE VALVE REMOVED, HYDRANT TEE PLUGGED	2	EA				
59	638	1" WATER SERVICE, COMPLETE - LONG SIDE	9	EA				
60	638	1" WATER SERVICE, COMPLETE - SHORT SIDE	24	EA				
61	638	2" WATER MAIN HDPE, DR-9	960	LF				
62	638	4" WATER MAIN DUCTILE IRON PIPE, CL 52	30	LF				
63	638	6" WATER MAIN DUCTILE IRON PIPE, CL 52	260	LF				
64	638	8" WATER MAIN DUCTILE IRON PIPE, CL 52	1,600	LF				
65	638	16" WATER MAIN DUCTILE IRON PIPE, CL 53	5	LF				

ALLEN AVENUE SE AREA SANITARY SEWER AND WATERLINE PROJECT, G.P. 1332
Bidder's Sheet

66	638	30" WATER MAIN DUCTILE IRON PIPE, CL 54	5	LF				
67	638	2" CURB STOP, COMPLETE	3	EA				
68	638	6" GATE VALVE AND VALVE BOX, COMPLETE	5	EA				
69	638	8" GATE VALVE AND VALVE BOX, COMPLETE	4	EA				
70	638	8"x8"x6" TEE	1	EA				
71	638	8"x6" CROSS	2	EA				
72	638	6"x4" REDUCER	2	EA				
73	638	30"x16" REDUCER	1	EA				
74	638	16"x8" REDUCER	1	EA				
75	638	8" 45 DEGREE BEND	24	EA				
76	638	8" 22.5 DEGREE BEND	1	EA				
77	638	6" 45 DEGREE BEND	2	EA				
78	638	4" 45 DEGREE BEND	2	EA				
79	638	6" PLUG	1	EA				
80	638	4" PLUG	2	EA				
81	638	2" PLUG	3	EA				
82	638	6" HYDRANT ASSEMBLY, TYPE A	5	EA				
83	638	BLOW-OFF ASSEMBLY	3	EA				
WATERWORKS TOTAL =								

ALLEN AVENUE SE AREA SANITARY SEWER AND WATERLINE PROJECT, G.P. 1332
Bidder's Sheet

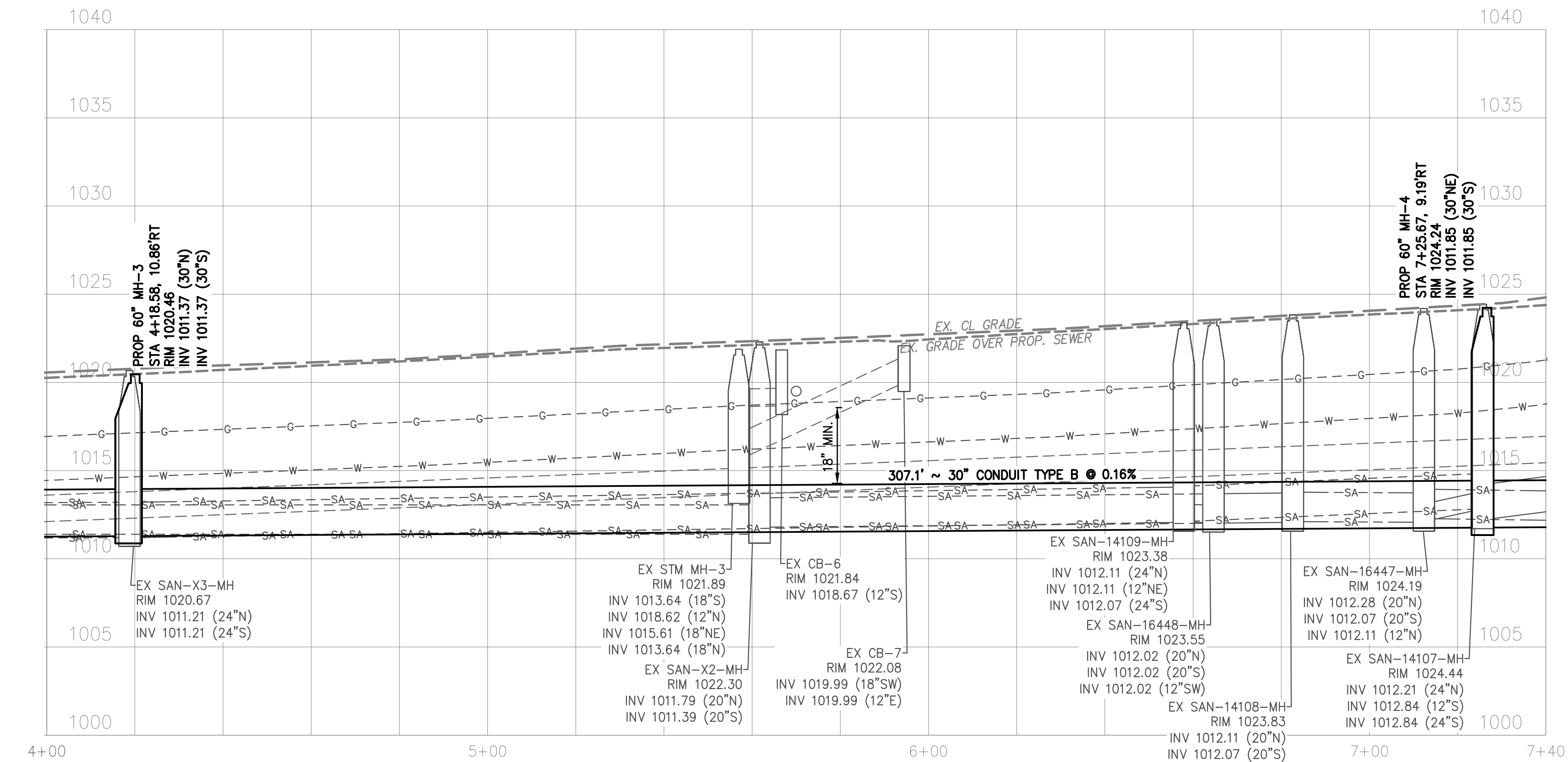
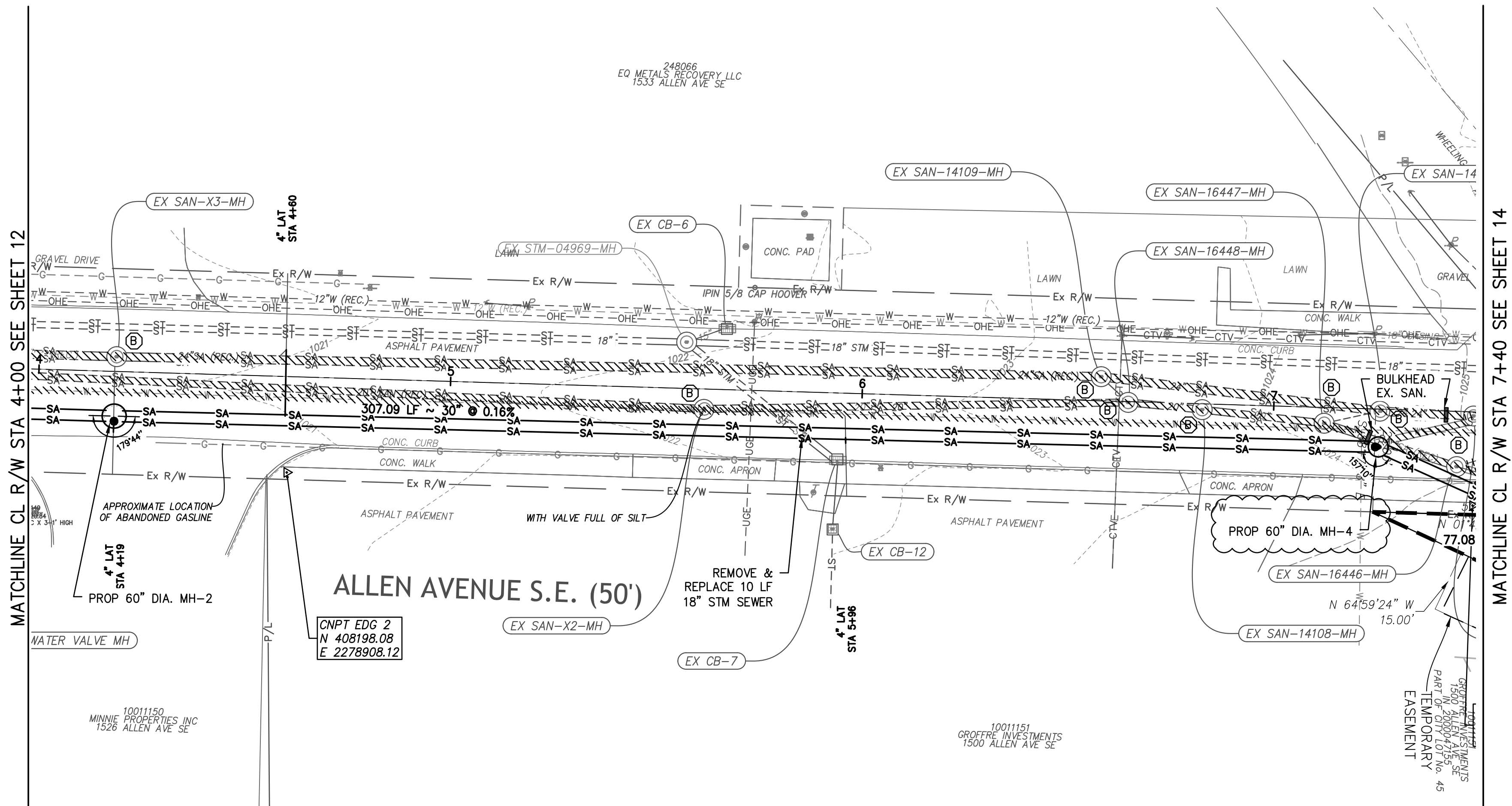
PAVEMENT								
84	452	7.5" NON-REINFORCED CONCRETE PAVEMENT, CLASS QC-1	1,265	SY				
85	609	CONCRETE CURB, ODOT TYPE 6	165	LF				
86	608	CONCRETE SIDEWALK	225	SF				
PAVEMENT TOTAL =								
INCIDENTALS								
87	623	CONSTRUCTION LAYOUT STAKING & SURVEYING	1	LS				
88	624	MOBILIZATION / DEMOBILIZATION	1	LS				
89	614	MAINTAINING TRAFFIC, COMPLETE	1	LS				
INCIDENTALS TOTAL =								
PART 2 TOTAL =								
TOTAL (PART 1 + PART 2) =								

Base Bid Price in Figures: _____

Base Bid Price in Words: _____

Base Bid Prices are for Informational Purposes Only.
Total Unit Prices will govern.

E:\CANTON\14-0250-030 ALLEN AVENUE TRUCK SEWER DESIGN\ADD 724.DWG 14-0250-030 - 02/10/2022 06:45:30 PM



LEGEND

- (A) CURB RAMP, SHEETS 39-42
- (B) MANHOLE ABANDONMENT, PER ITEM 202
- ABANDON SANITARY SEWER/WATERLINE -- FOR SANITARY SEWER ABANDONMENT REFER TO ITEM 202 IN THE GENERAL NOTES. FOR WATERLINE ABANDONMENT REFER TO NOTE 4 ON THIS SHEET

NOTES:

- CONTRACTOR SHALL LOCATE ALL EXISTING UTILITIES BEFORE THE START OF CONSTRUCTION.
- ACCESS TO ALL BUSINESSES SHALL BE MAINTAINED DURING CONSTRUCTION.
- COORDINATION WITH THE PROPERTY OWNERS SHALL BE PERFORMED PRIOR TO MAKING THE LATERAL CONNECTIONS.
- WHERE THE ABANDONED WATERLINE IS ENCOUNTERED DURING CONSTRUCTION, THE CONTRACTOR SHALL REMOVE AND DISPOSE OF THE PIPES AS PART OF THE EXCAVATION COST. ANY REMAINING PORTIONS OF WATERLINE TO REMAIN MUST BE PLUGGED WITH BRICK AND/OR CONCRETE MASONRY WITH A MINIMUM THICKNESS OF 12 INCHES.

ALLEN AVENUE SE SANITARY SEWER REPLACEMENT GP 1332 CITY OF CANTON

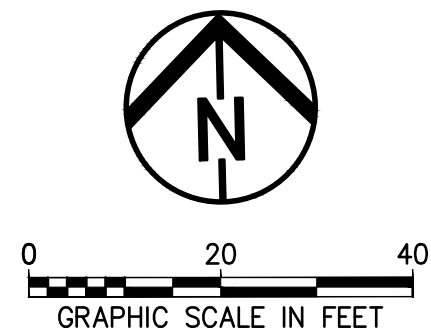
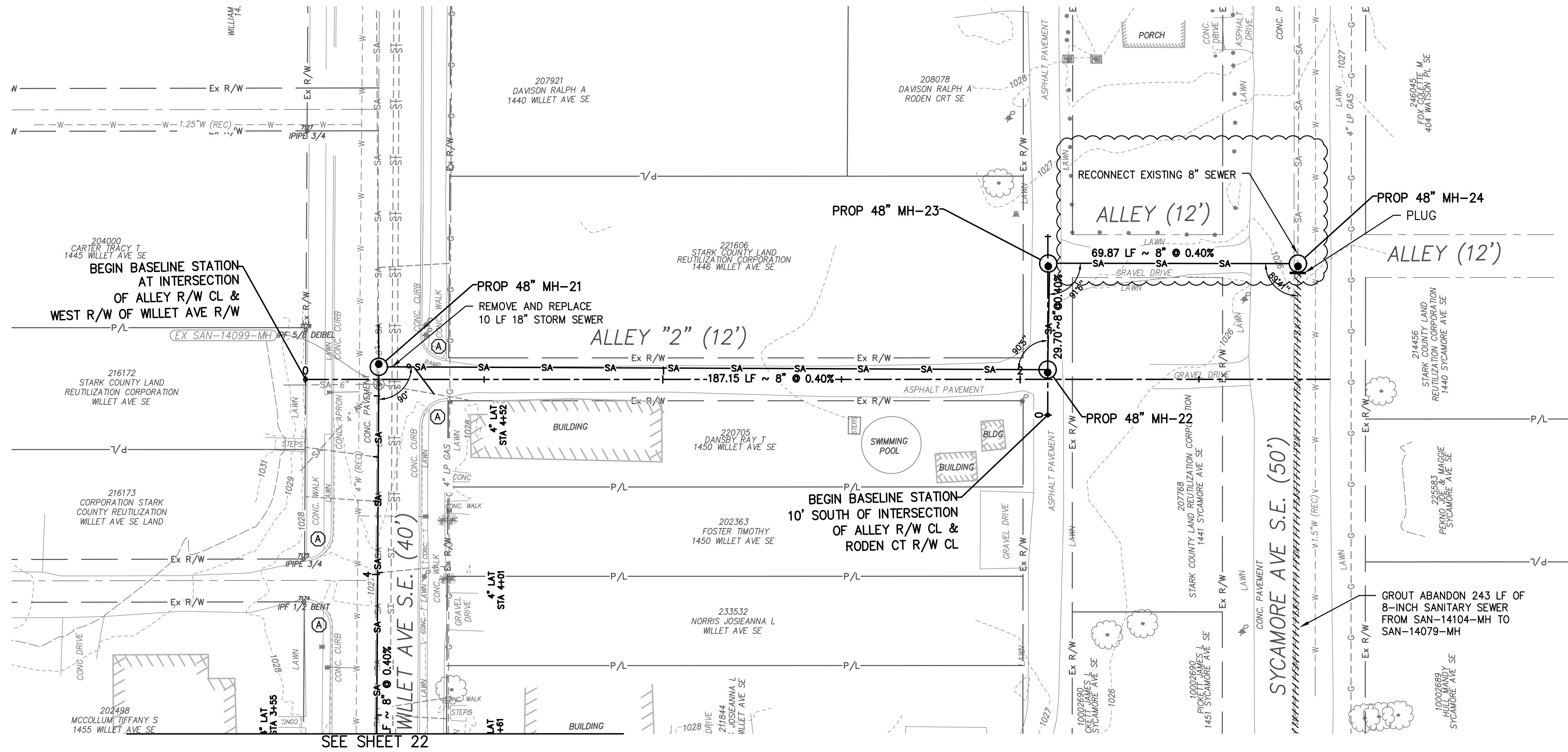
DATE: _____

REVISIONS		
Δ	DATE	DESCRIPTION
2	-	ADDENDUM #2
-	-	-
-	-	-
-	-	-
-	-	-
-	-	-
-	-	-

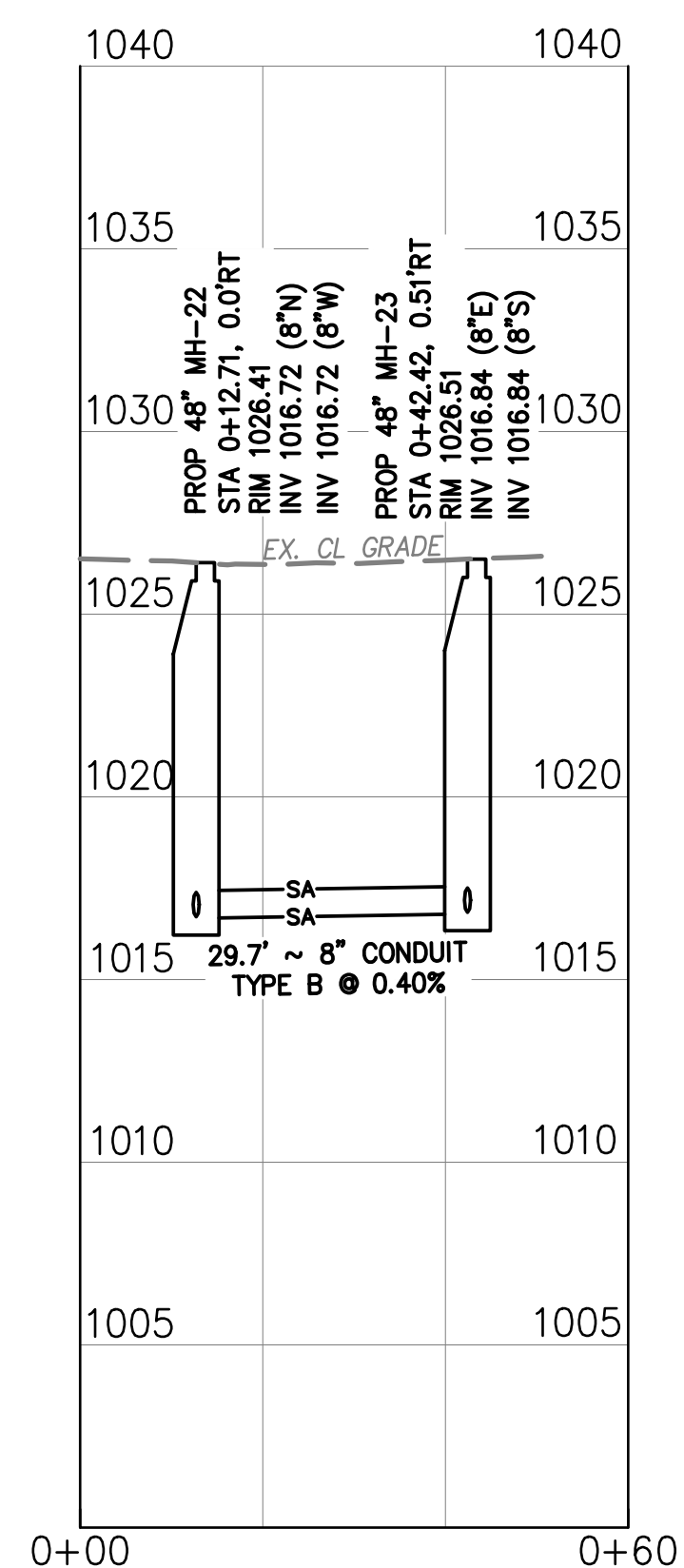
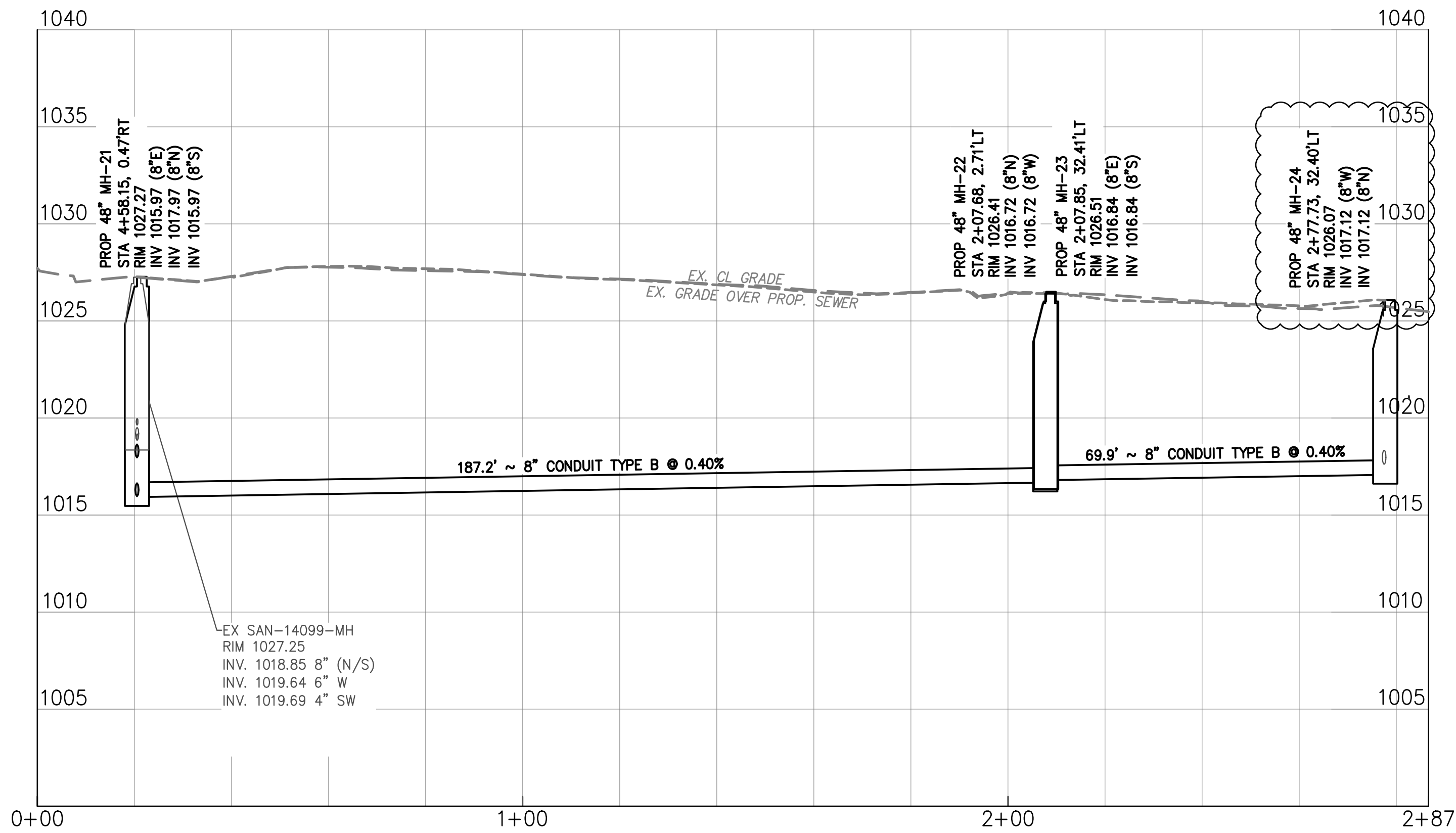
PROJECT NO.: ----
DRAWN BY: ----
CHECKED BY: ----
DATE ISSUED: YYYY/MM/DD

ALLEN AVE 4+00-7+40

E:\CANTON\19-0255-035 ALLEN AVENUE TRUCK SEWER DESIGN\ADD 274.PR 19-0255-035 - 02/10/2021 04:21:50 PM



**ALLEN AVENUE SE SANITARY
SEWER REPLACEMENT GP 1332
CITY OF CANTON**



LEGEND

- (A) CURB RAMP, SHEETS 39-42
- (B) MANHOLE ABANDONMENT, PER ITEM 202
- ABANDON SANITARY SEWER/WATERLINE - FOR SANITARY SEWER ABANDONMENT REFER TO ITEM 202 IN THE GENERAL NOTES. FOR WATERLINE ABANDONMENT REFER TO NOTE 4 ON THIS SHEET

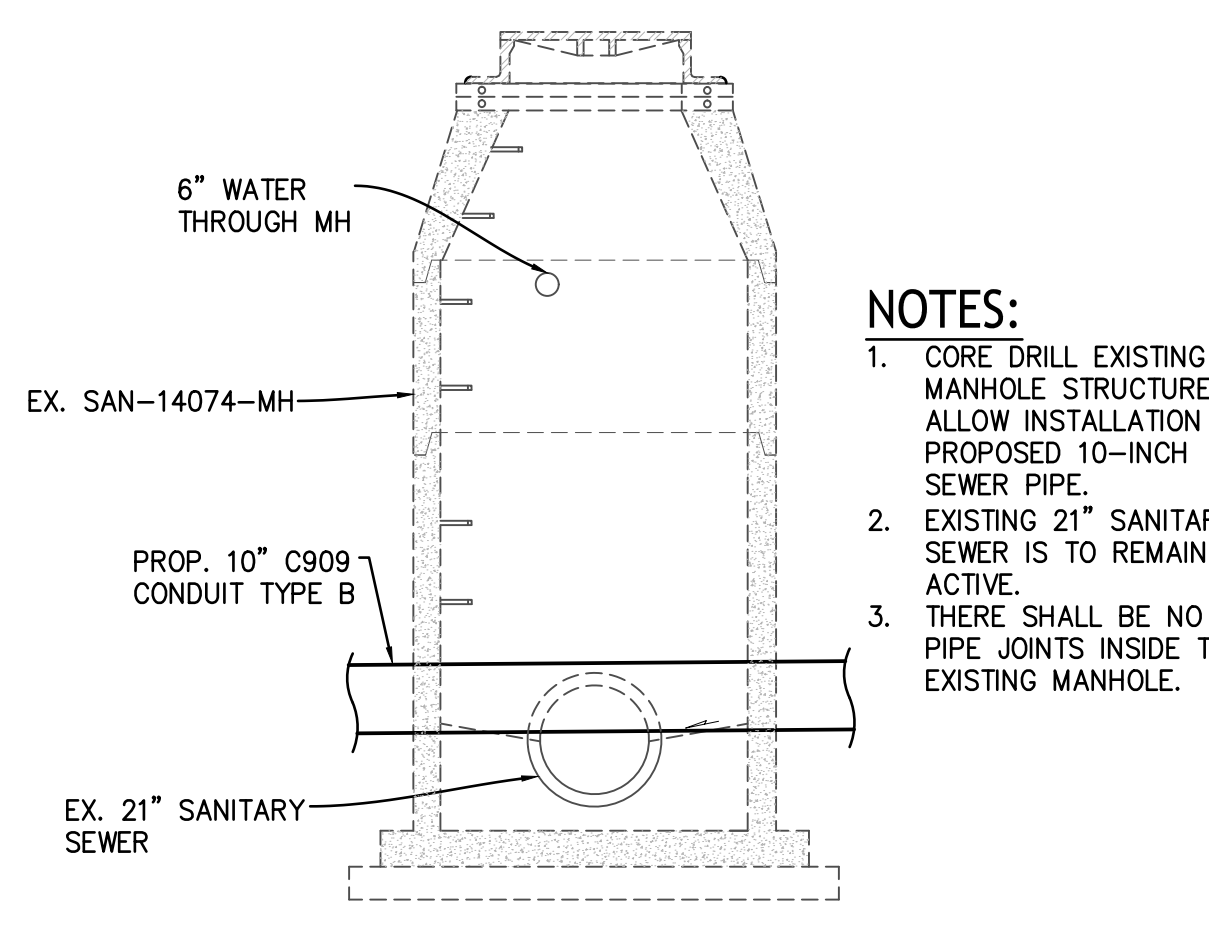
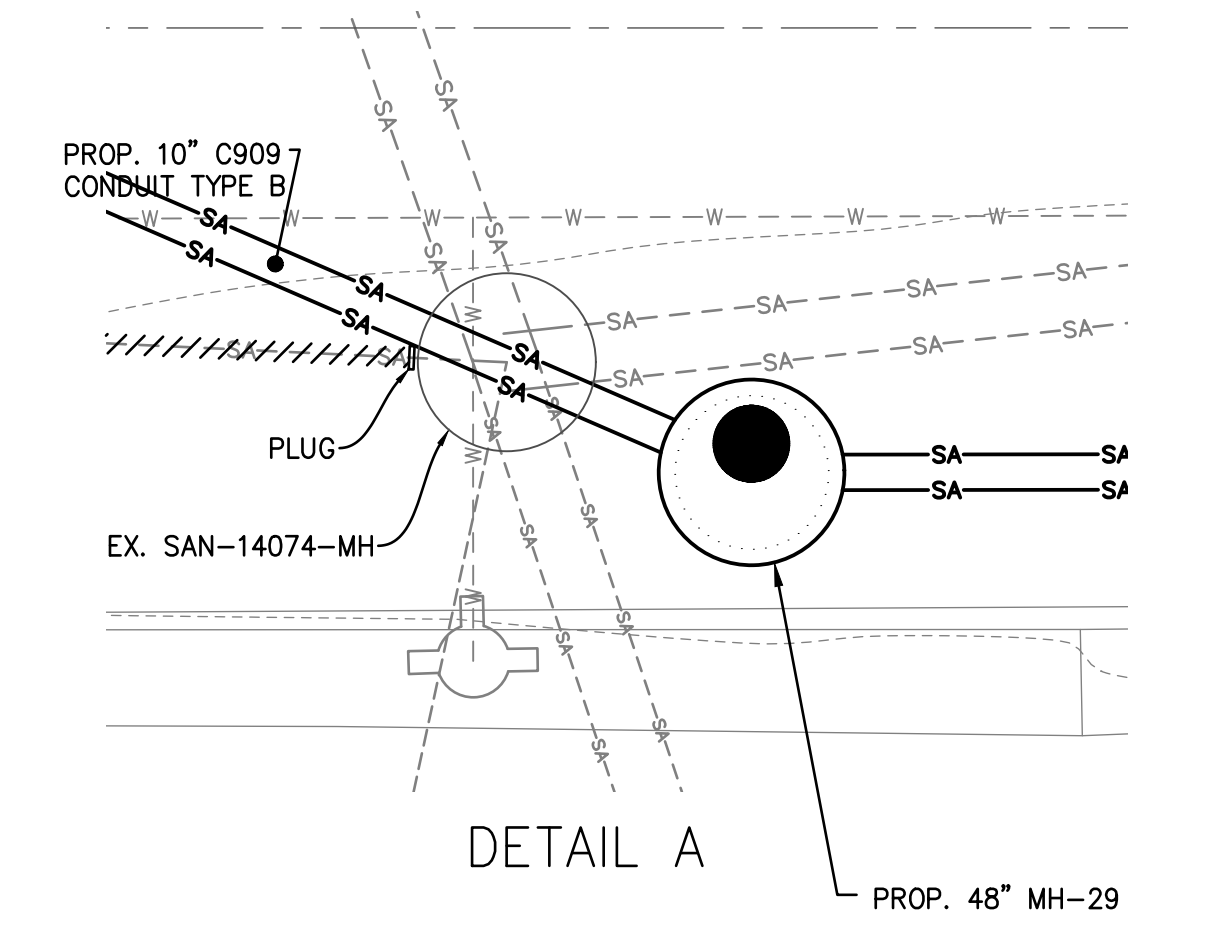
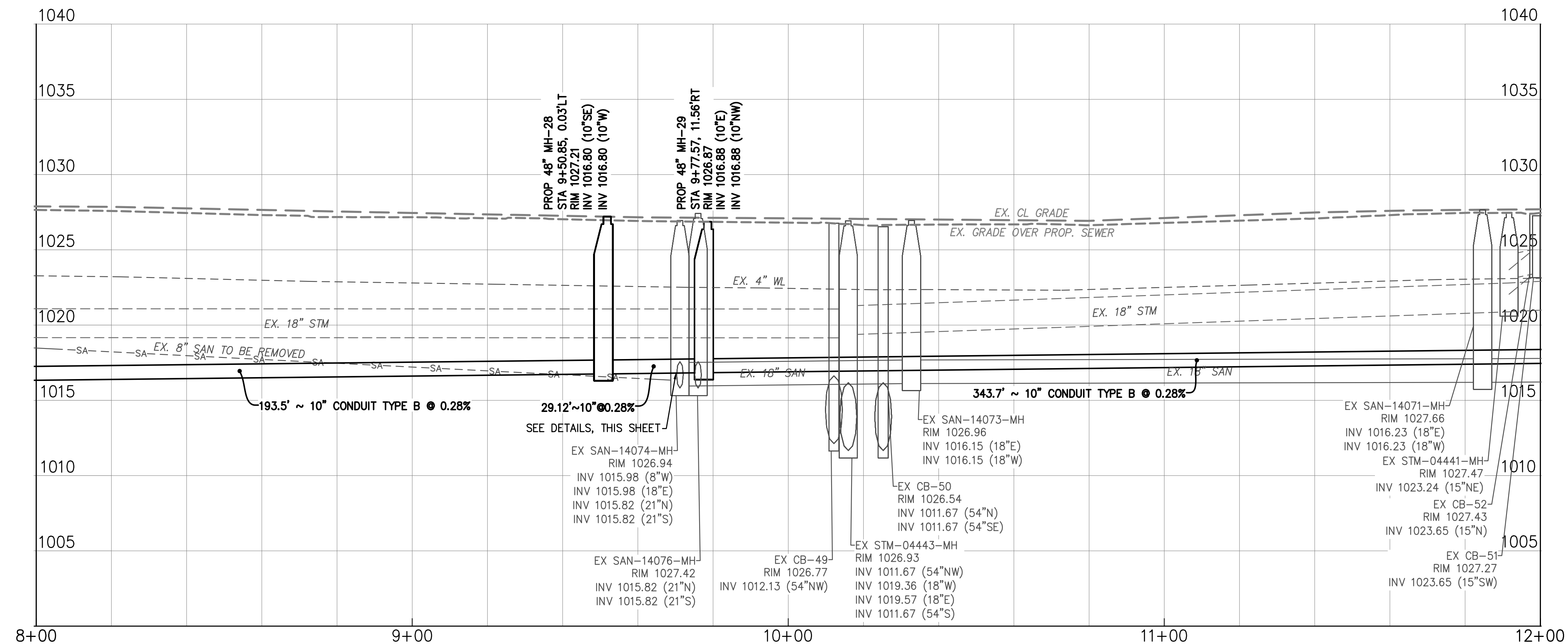
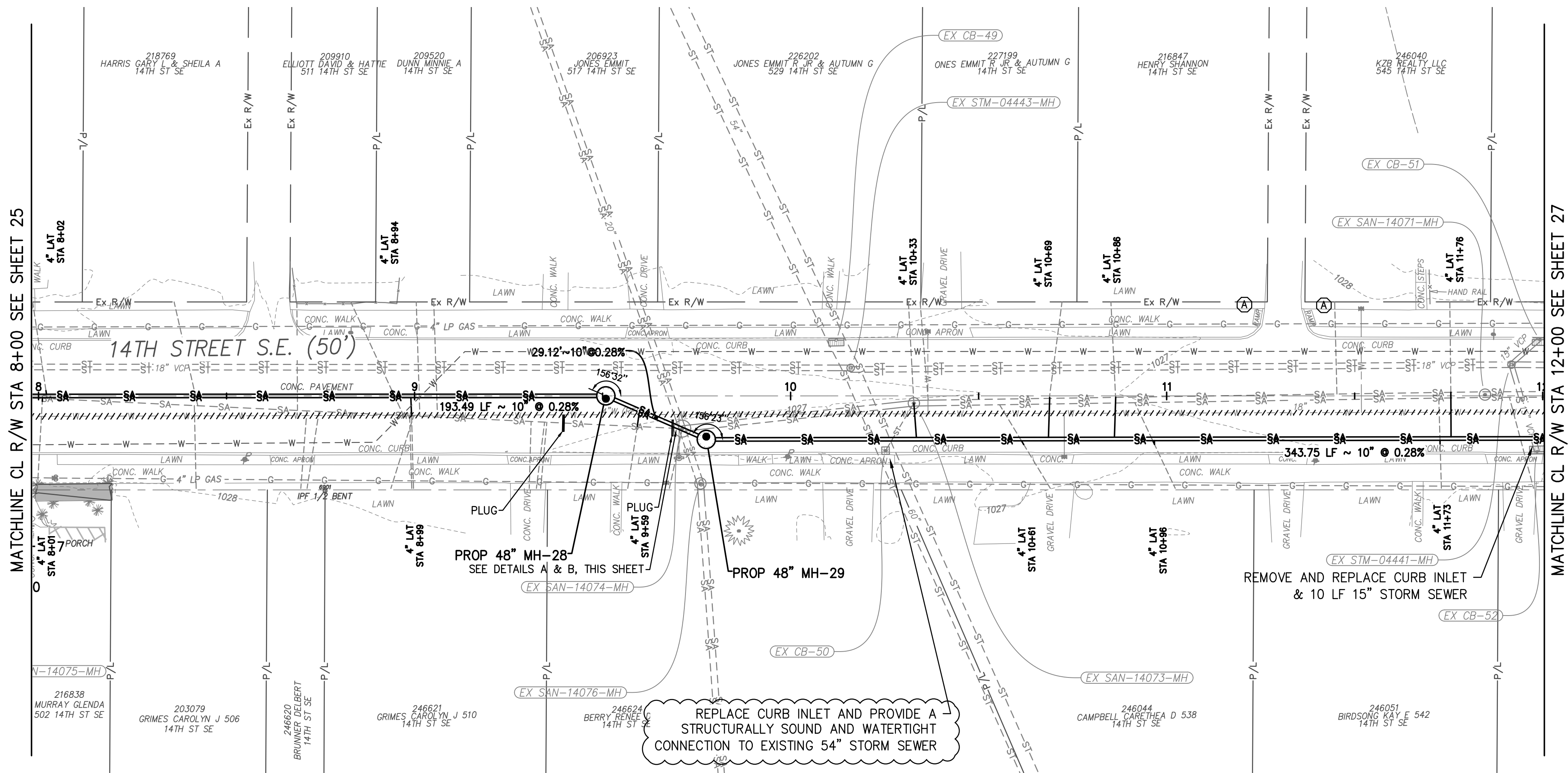
NOTES:

- CONTRACTOR SHALL LOCATE ALL EXISTING UTILITIES BEFORE THE START OF CONSTRUCTION.
- ACCESS TO ALL BUSINESSES SHALL BE MAINTAINED DURING CONSTRUCTION.
- COORDINATION WITH THE PROPERTY OWNERS SHALL BE PERFORMED PRIOR TO MAKING THE LATERAL CONNECTIONS.
- WHERE THE ABANDONED WATERLINE IS ENCOUNTERED DURING CONSTRUCTION, THE CONTRACTOR SHALL REMOVE AND DISPOSE OF THE PIPES AS PART OF THE EXCAVATION COST. ANY REMAINING PORTIONS OF WATERLINE TO REMAIN MUST BE PLUGGED WITH BRICK AND/OR CONCRETE MASONRY WITH A MINIMUM THICKNESS OF 12 INCHES.

DATE: _____		
REVISIONS		
Δ	DATE	DESCRIPTION
2	-	ADDENDUM #2
-	-	-
-	-	-
-	-	-
-	-	-
-	-	-
-	-	-
PROJECT NO.:		----
DRAWN BY:		----
CHECKED BY:		----
DATE ISSUED:		YYYY/MM/DD

ALLEY 2 0+00-2+87

E:\CANTON\14-00250-030 ALLEN AVENUE TRUCK SEWER DESIGN\ADD 7/24/20 14-00250-030 - 02/11/2022 09:52:54 AM



NOTES:

1. CORE DRILL EXISTING MANHOLE STRUCTURE TO ALLOW INSTALLATION OF PROPOSED 10-INCH SEWER PIPE.
2. EXISTING 21" SANITARY SEWER IS TO REMAIN ACTIVE.
3. THERE SHALL BE NO PIPE JOINTS INSIDE THE EXISTING MANHOLE.

NOTES:

1. CONTRACTOR SHALL LOCATE ALL EXISTING UTILITIES BEFORE THE START OF CONSTRUCTION.
2. ACCESS TO ALL BUSINESSES SHALL BE MAINTAINED DURING CONSTRUCTION.
3. COORDINATION WITH THE PROPERTY OWNERS SHALL BE PERFORMED PRIOR TO MAKING THE LATERAL CONNECTIONS.
4. WHERE THE ABANDONED WATERLINE IS ENCOUNTERED DURING CONSTRUCTION, THE CONTRACTOR SHALL REMOVE AND DISPOSE OF THE PIPES AS PART OF THE EXCAVATION COST. ANY REMAINING PORTIONS OF WATERLINE TO REMAIN MUST BE PLUGGED WITH BRICK AND/OR CONCRETE MASONRY WITH A MINIMUM THICKNESS OF 12 INCHES.
5. INSERT PLUG OUTSIDE OF TRENCH LIMITS WHERE NOTED.

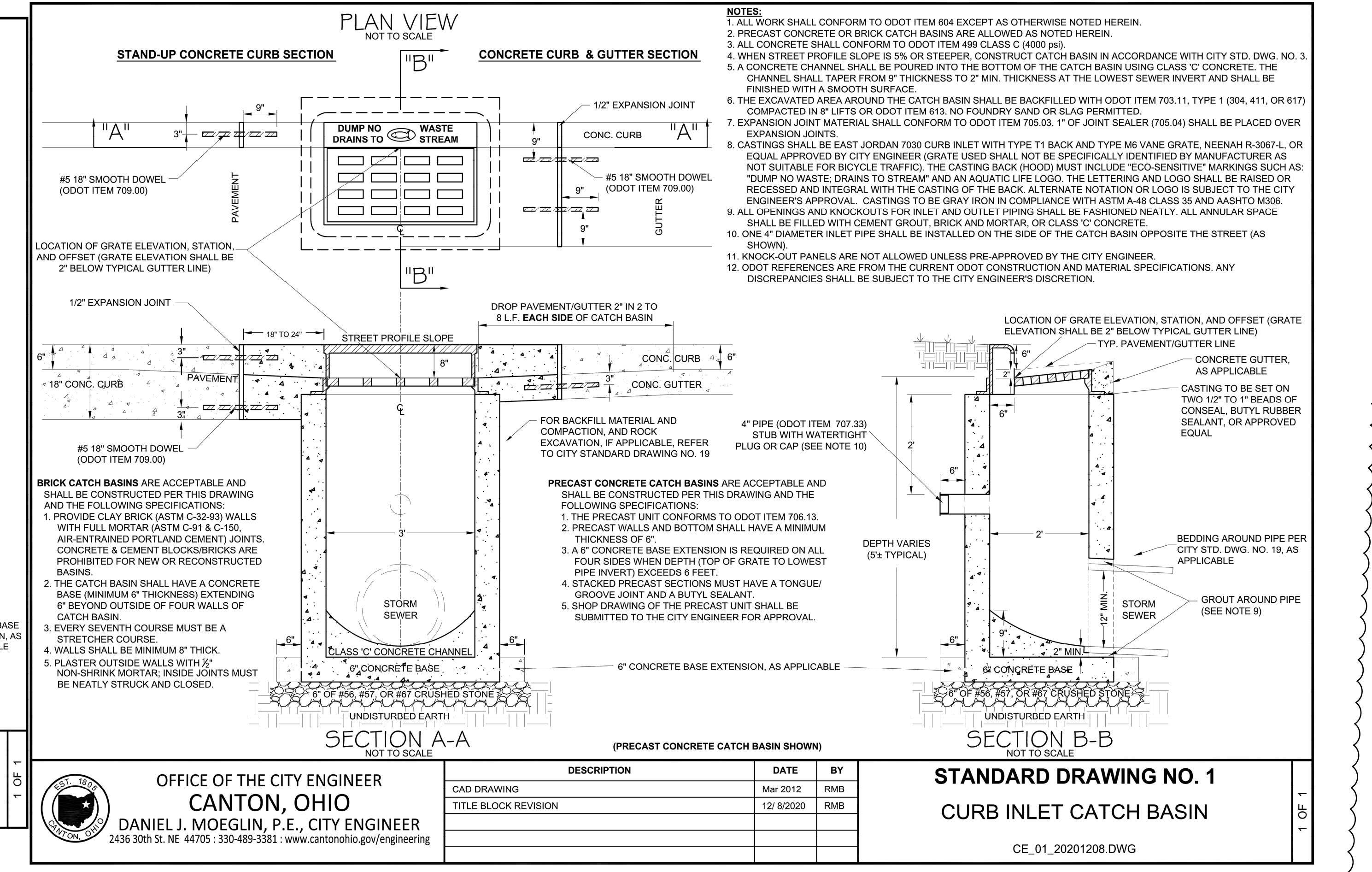
- LEGEND
- (A) CURB RAMP, SHEETS 39-42
 - (B) MANHOLE ABANDONMENT, PER ITEM 202
 - ABANDON SANITARY SEWER/WATERLINE - FOR SANITARY SEWER ABANDONMENT REFER TO ITEM 202 IN THE GENERAL NOTES. FOR WATERLINE ABANDONMENT REFER TO NOTE 4 ON THIS SHEET

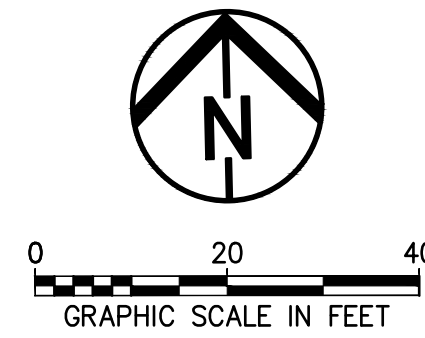
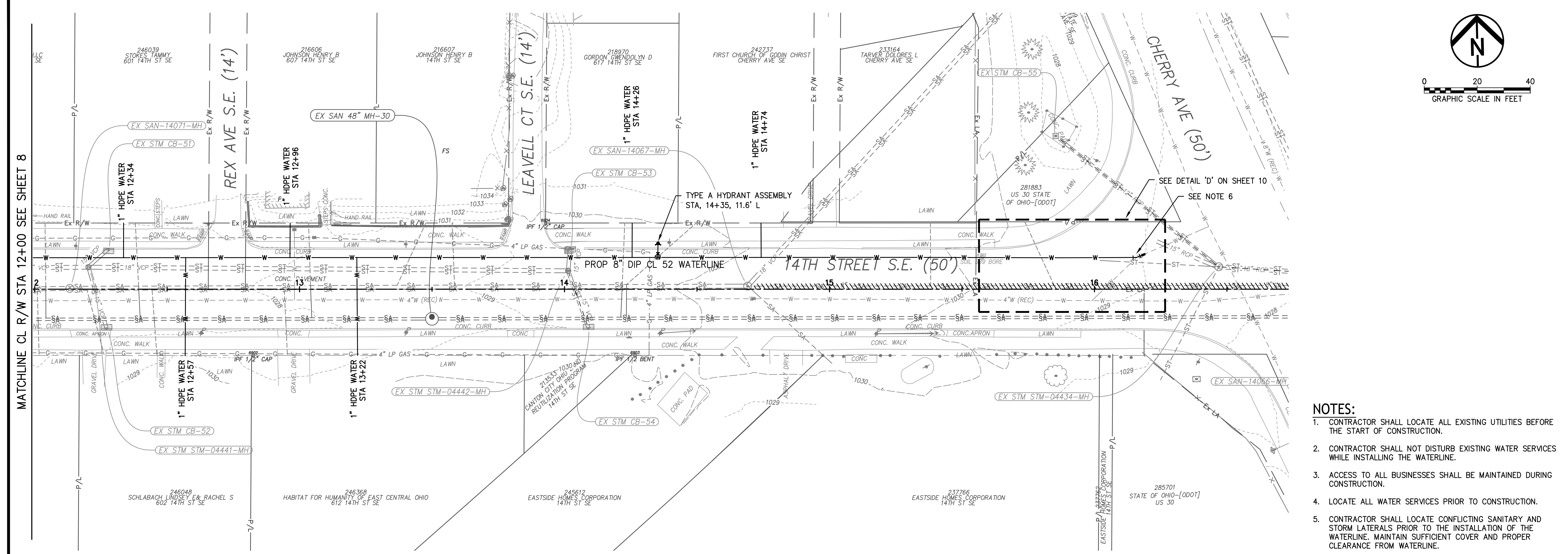
ALLEN AVENUE SE SANITARY
SEWER REPLACEMENT GP 1332
CITY OF CANTON

REVISIONS		
Δ	DATE	DESCRIPTION
2		ADDENDUM #2
-	-	-
-	-	-
-	-	-
-	-	-
-	-	-
-	-	-
-	-	-
-	-	-
PROJECT NO.: ----		
DRAWN BY: ----		
CHECKED BY: ----		
DATE ISSUED: YYYY/MM/DD		

14TH ST 8+00-12+00

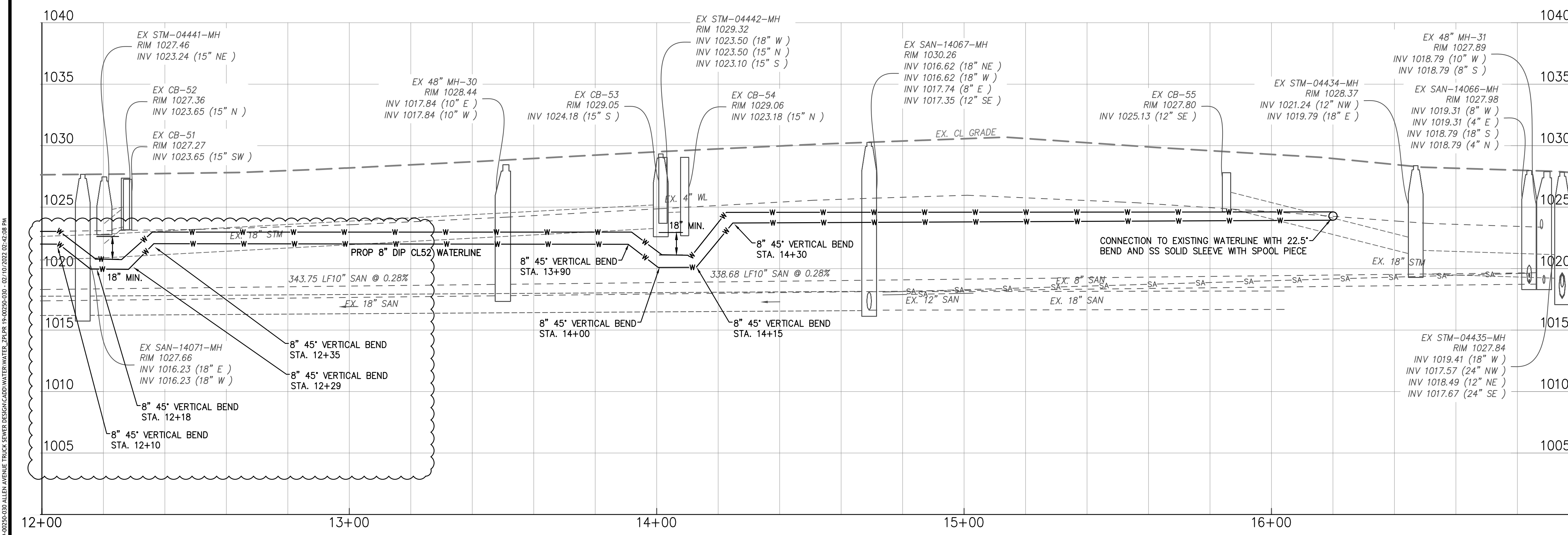
38 OF 46





**14TH STREET WATERLINE
REPLACEMENT
CITY OF CANTON**

- NOTES:**
1. CONTRACTOR SHALL LOCATE ALL EXISTING UTILITIES BEFORE THE START OF CONSTRUCTION.
 2. CONTRACTOR SHALL NOT DISTURB EXISTING WATER SERVICES WHILE INSTALLING THE WATERLINE.
 3. ACCESS TO ALL BUSINESSES SHALL BE MAINTAINED DURING CONSTRUCTION.
 4. LOCATE ALL WATER SERVICES PRIOR TO CONSTRUCTION.
 5. CONTRACTOR SHALL LOCATE CONFLICTING SANITARY AND STORM LATERALS PRIOR TO THE INSTALLATION OF THE WATERLINE. MAINTAIN SUFFICIENT COVER AND PROPER CLEARANCE FROM WATERLINE.
 6. CONTRACTOR TO COORDINATE EXACT TIE-IN LOCATION WITH THE CANTON WATER DEPARTMENT



DATE: _____

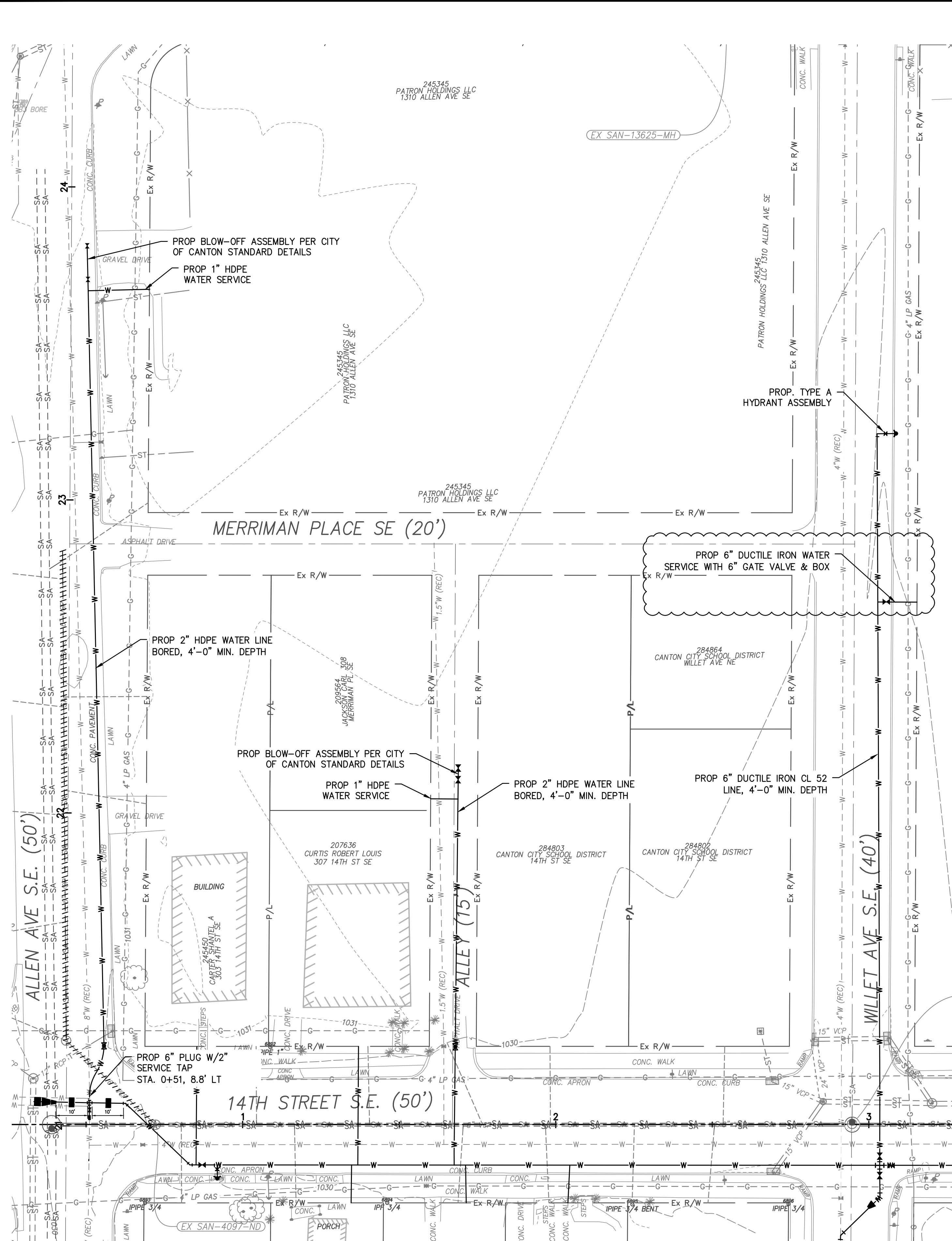
REVISIONS		
Δ	DATE	DESCRIPTION
2		ADDENDUM #2
-	-	-
-	-	-
-	-	-
-	-	-
-	-	-
-	-	-
-	-	-

PROJECT NO.: -----
DRAWN BY: NTB
CHECKED BY: GWS
DATE ISSUED: YYYY/MM/DD

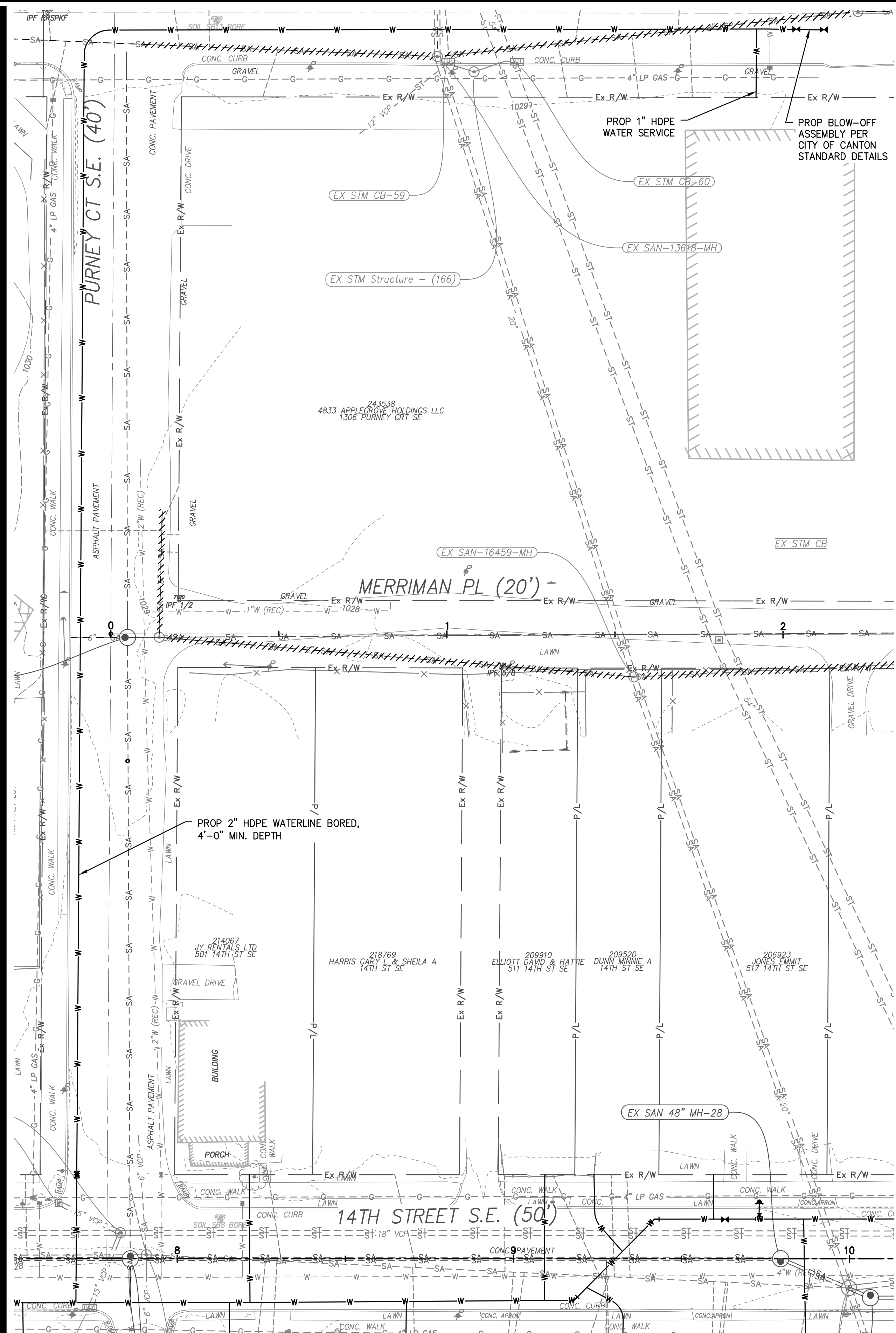
PLAN AND PROFILE -
4

E:\CANTON\14-0255-035 ALLEN AVENUE TRUCK SEWER DESIGN AND WATER WATER 241.PR 14-0255-035 07/10/2022 02:45:08 PM

E:\CANTON\19-0255-030 ALLEN AVENUE TRUCK SEWER DESIGN AND WATER INTERSECTION DETAILS 19-0255-030 ALLEN AVENUE - 02/10/2022 02:19:09 PM



ALLEN AVE. TO WILLET - SIDE STREET CONNECTIONS



PURNEY CT. CONNECTION

14TH STREET WATERLINE REPLACEMENT CITY OF CANTON

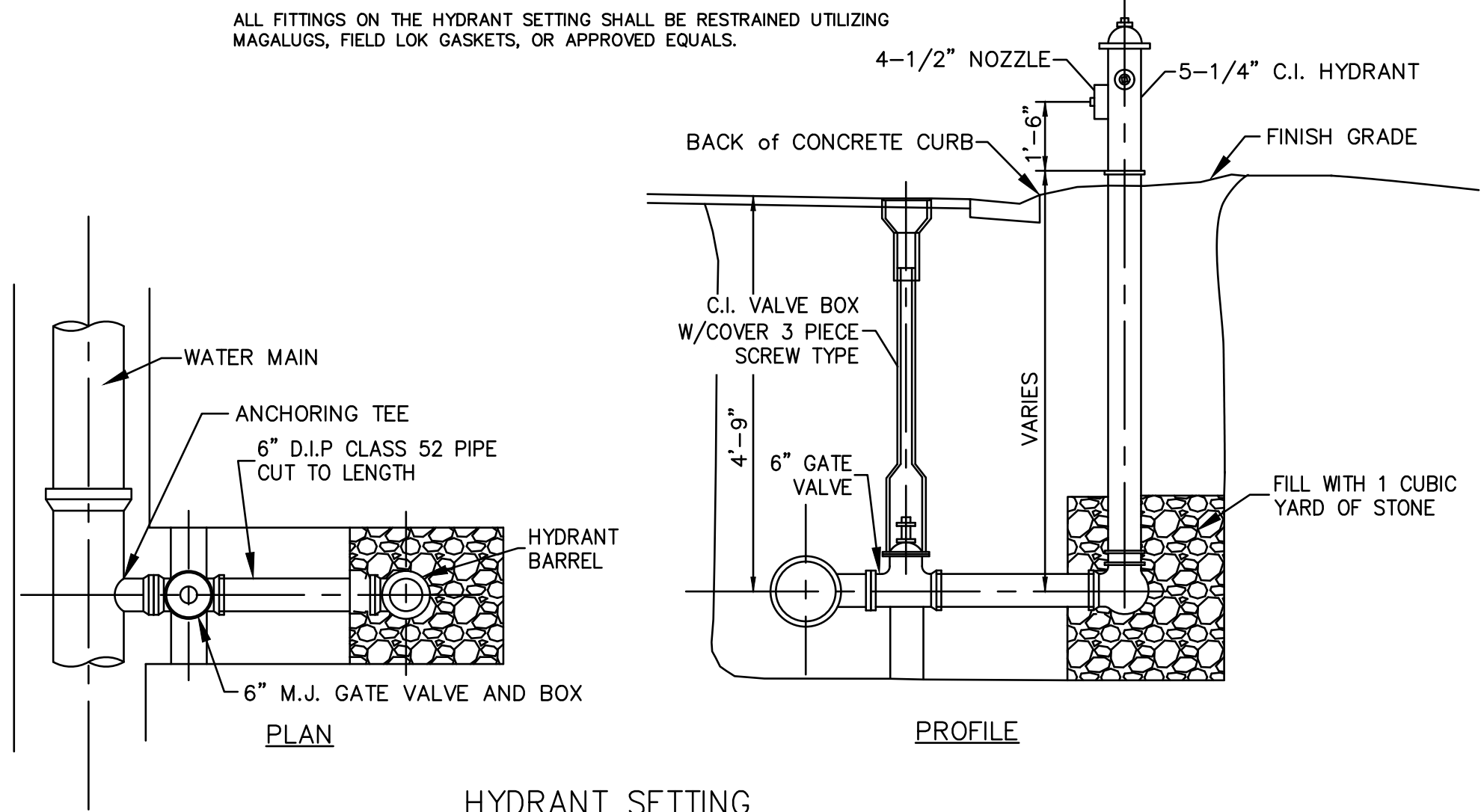
DATE: _____

REVISIONS		
Δ	DATE	DESCRIPTION
2		ADDENDUM #2

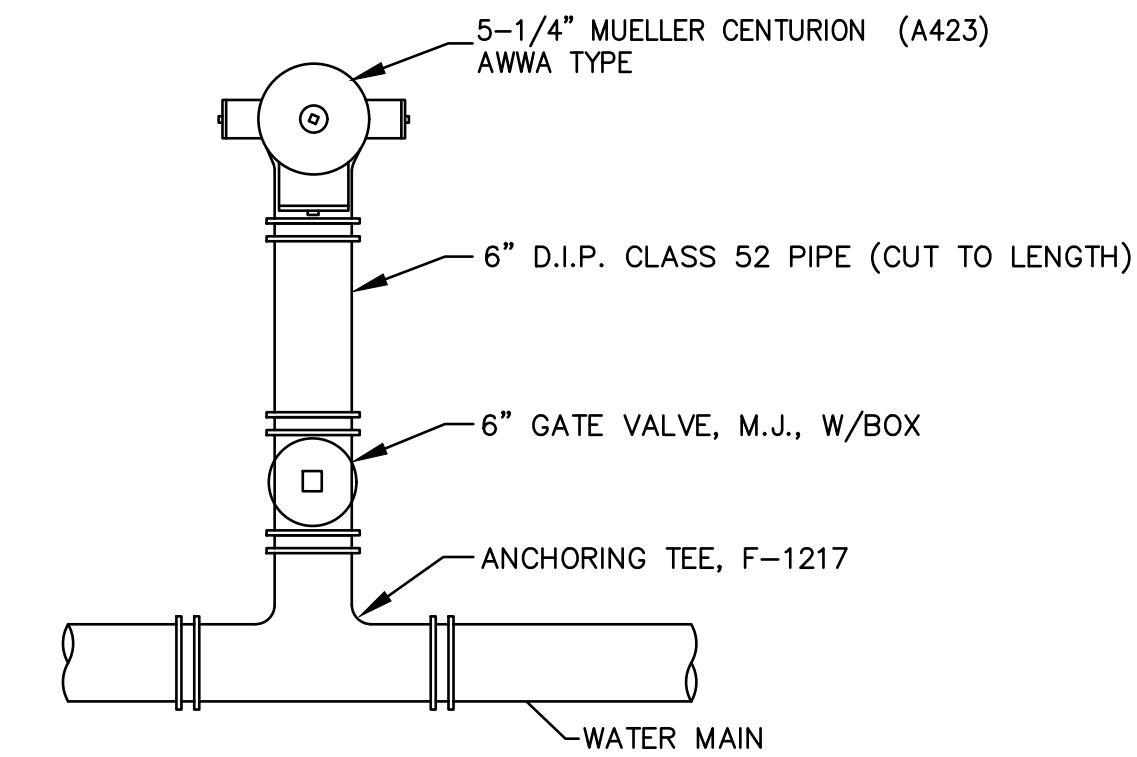
PROJECT NO.: _____
DRAWN BY: _____
CHECKED BY: _____
DATE ISSUED: _____

SIDE STREET CONNECTION

E:\CANTON\19-0255-035 ALLEN AVENUE TRUCK SEWER DESIGN\CAD\WATER MAIN\21071_19-0255-035_02/11/2022 12:55:11 PM



HYDRANT SETTING
(C71)
REV 4/6/1989



HYDRANT SETTINGS CONSIST OF HYDRANT, VALVE, VALVE BOX, FITTINGS AND MATERIALS SHOWN OR SPECIFIED WHICH ARE NEEDED FOR PROPER INSTALLATION.

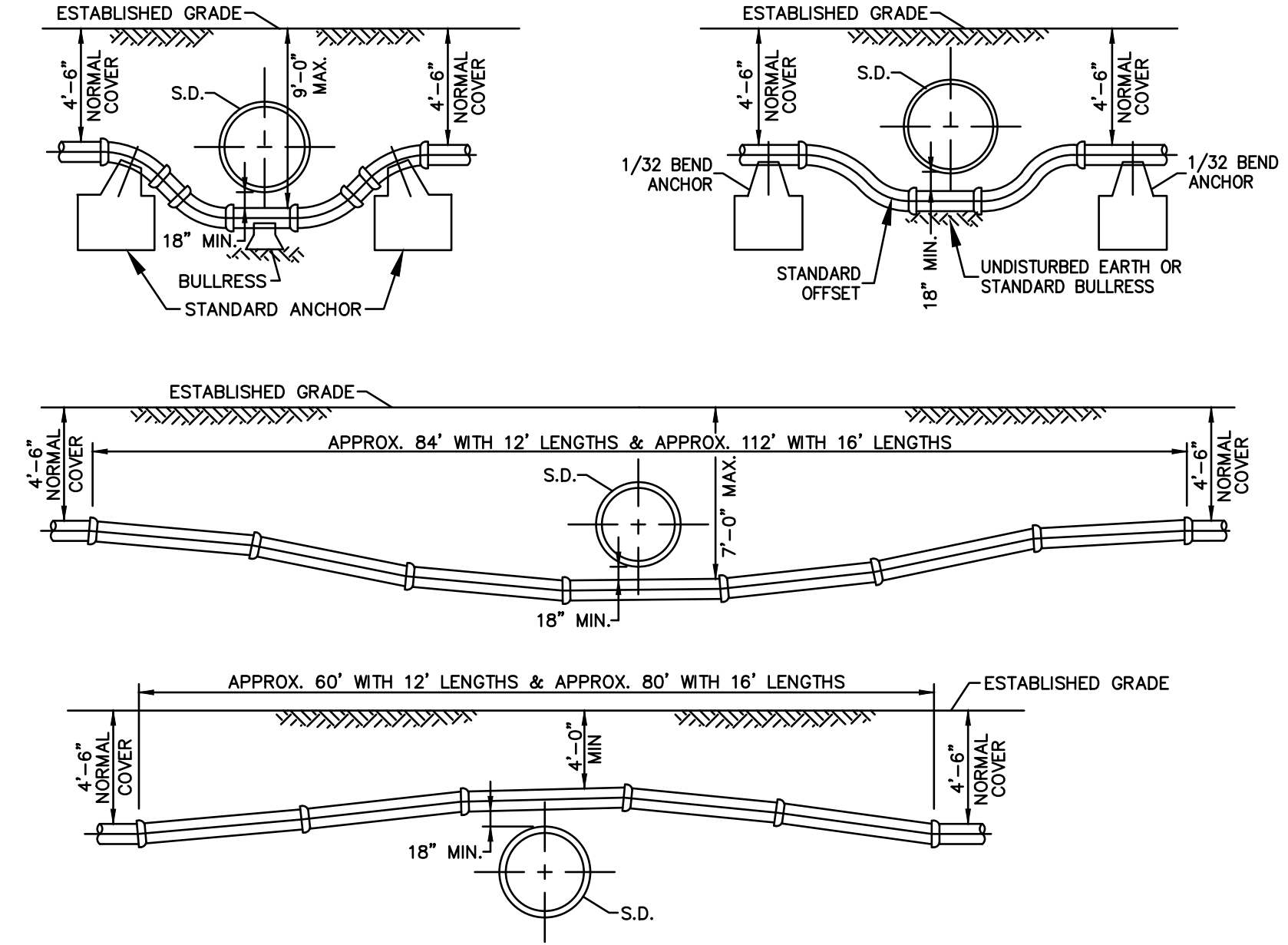
SEE SPECIFICATIONS FOR MORE INFORMATION ABOUT MATERIALS, SETTING HYDRANTS AND DRAINAGE REQUIREMENTS.

IF RESTRAINED JOINT FITTINGS CANNOT BE USED, (2) TIE RODS AND (4) EYE BOLTS WITH NUTS AND WASHERS MUST BE USED.

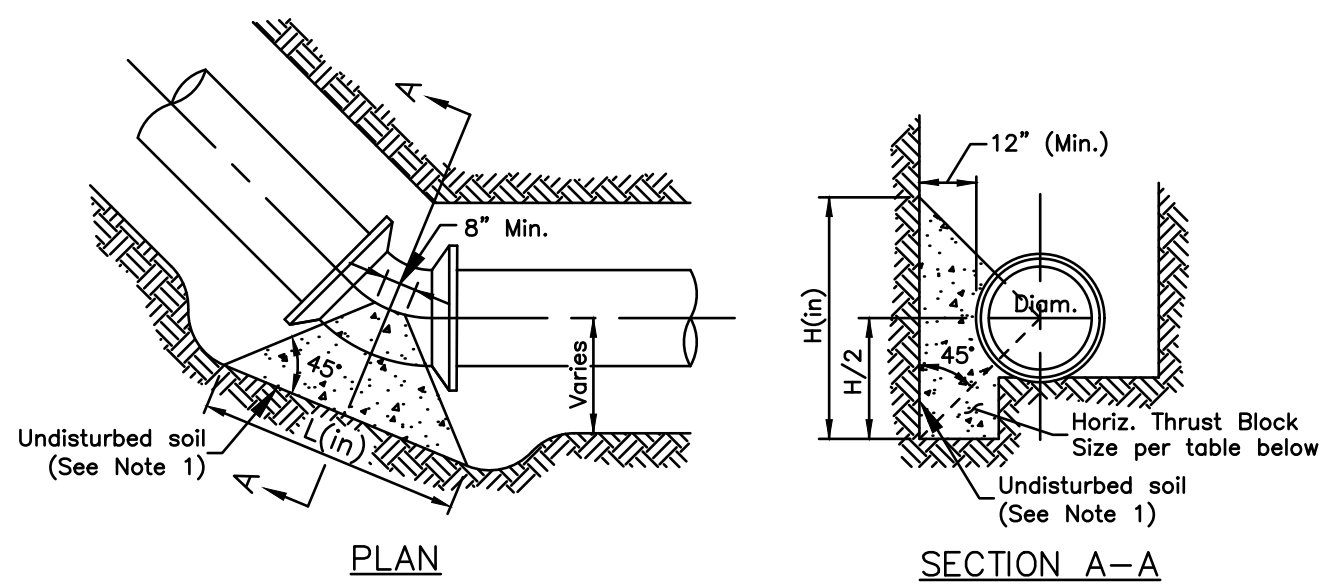
FIGURES SUCH AS F-1217 INDICATE CLOW CORPORATION STYLES. USE THIS BRAND OR APPROVED EQUAL.

ALL HYDRANTS ARE TO BE INSTALLED WITH THE PUMPER NOZZLE FACING THE STREET.

HYDRANT CONNECTION
(C70)
REV 4/5/1989



WATER MAIN CROSSING STORM DRAIN
(C187)
REV 10/22/2013

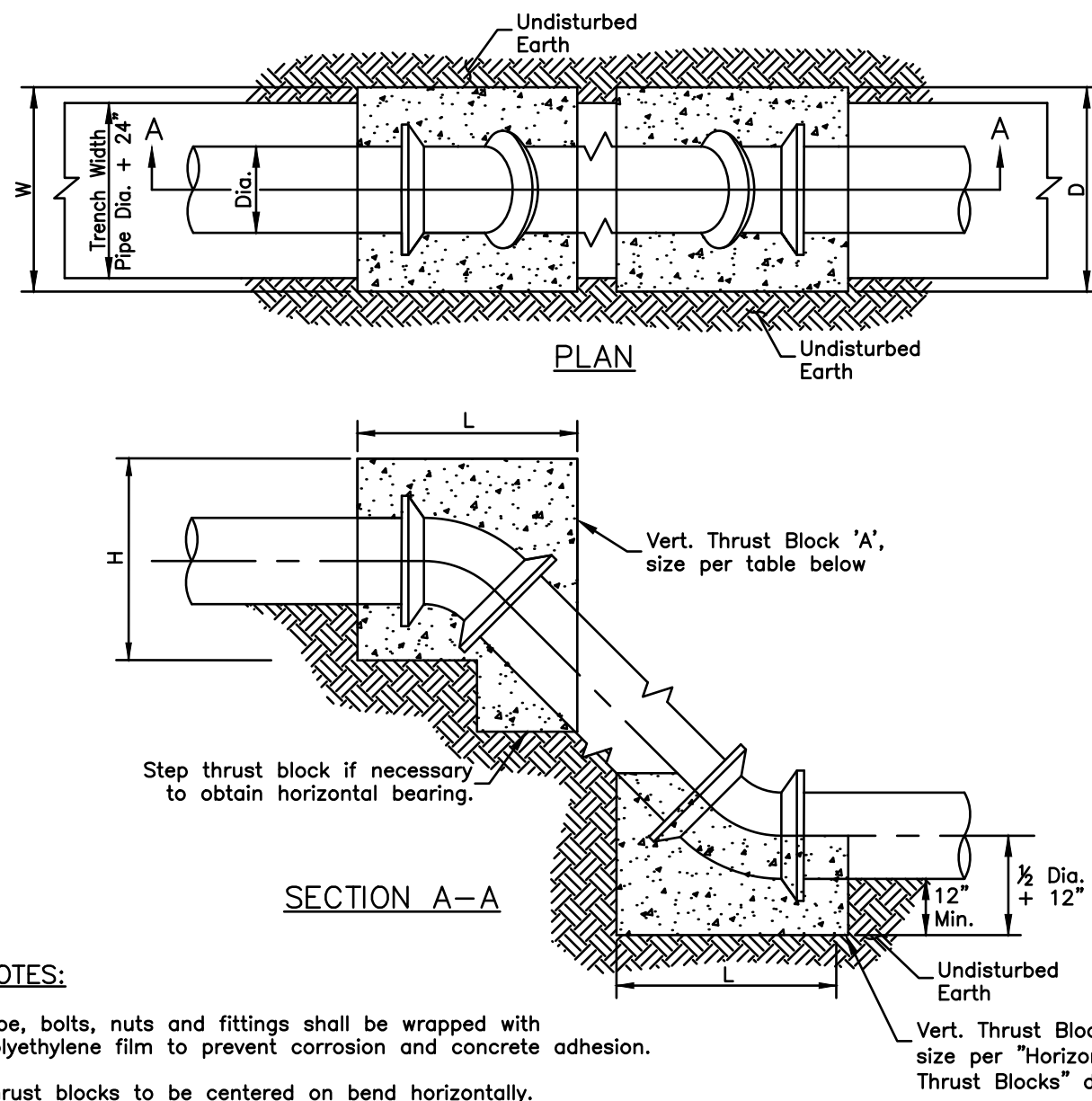


NOTES:

1. Thrust blocks shall be placed against undisturbed soil. Where it is not possible, the fill between the bearing surface and undisturbed soil must be compacted to at least 90% Standard Proctor density.
2. Pipe, bolts, nuts and fittings shall be wrapped with polyethylene film to prevent corrosion and concrete adhesion.
3. All joints to be Megalugged.

SIZE OF PIPE	DEGREE OF BEND							
	11 1/4°		22 1/2°		45°		90°	
	L	H	L	H	L	H	L	H
6"	16	8	16	10	24	14	32	18
8"	16	10	21	14	31	18	44	24
12"	21	16	32	20	48	26	66	36
16"	29	20	42	28	66	34	90	46
20"	37	24	50	36	73	48	107	60
24"	46	28	64	40	93	54	128	72

HORIZONTAL THRUST BLOCKS
(C130)
REV 3/7/2016



NOTES:

Pipe, bolts, nuts and fittings shall be wrapped with polyethylene film to prevent corrosion and concrete adhesion.

Thrust blocks to be centered on bend horizontally.

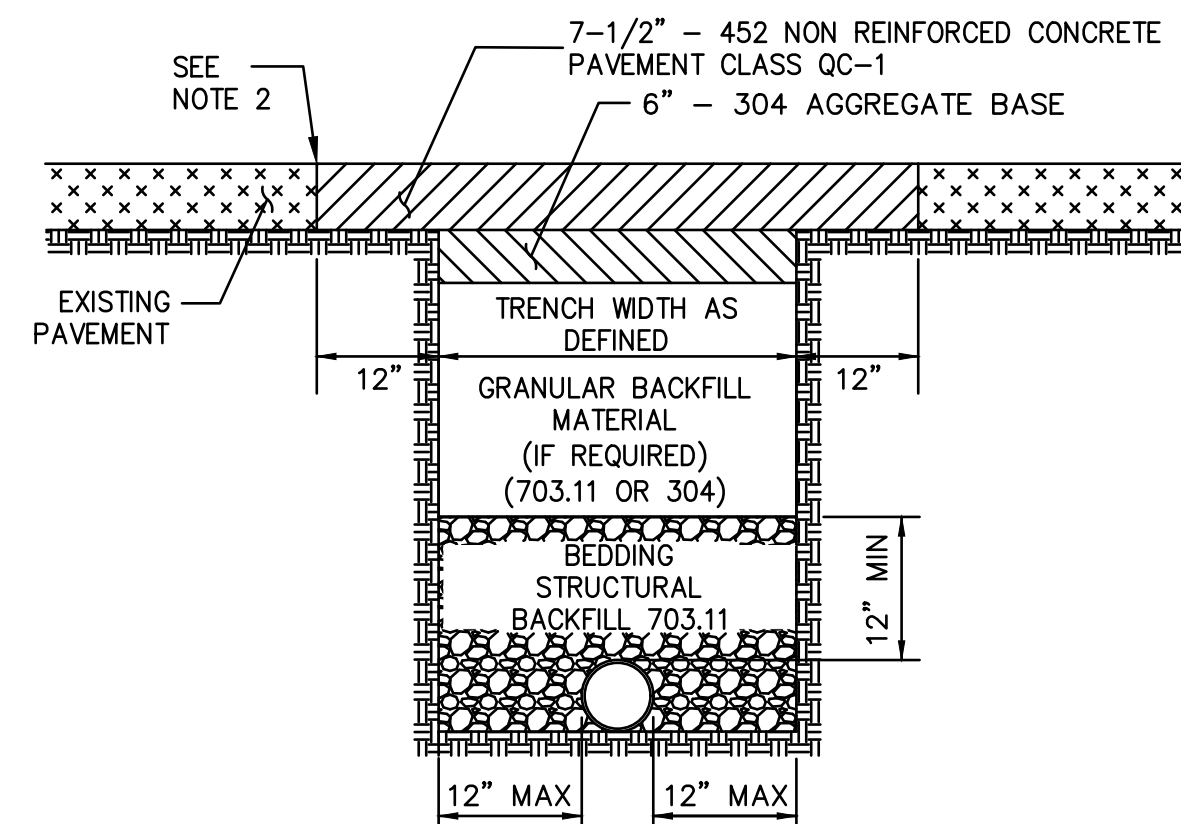
Thrust block 'A' shall be off centered on bend vertically to shift the majority of the block above the fitting.

All joints to be Megalugged.

Concrete thrust blocks to be placed on all vertical bends.

SIZE OF PIPE	DEGREE OF BEND											
	11 1/4°				22 1/2°				45°			
	L	W	H	V (cy)	L	W	H	V (cy)	L	W	H	V (cy)
6"	12	48	18	0.2	15	43	36	0.5	28	55	24	0.8
8"	12	63	24	0.4	18	57	34	0.7	36	57	33	1.4
12"	20	54	36	0.8	37	62	37	1.7	48	62	51	3.1
16"	31	65	38	1.6	55	65	39	3.0	65	65	65	5.6
20"	40	56	50	2.4	57	66	59	4.8	82	74	68	8.8
24"	48	60	60	3.5	67	72	66	6.9	91	72	72	12.7

CONCRETE THRUST BLOCKS FOR VERTICAL BENDS ON
WATER MAINS
(POURED IN PLACE, CLASS C)
(C147)
REV 4/22/2015



NOTES:

1. NO FOUNDRY SAND OR SLAG IS PERMITTED. ALTERNATE BACKFILL MATERIAL PERMITTED ONLY IF APPROVED BY CITY ENGINEER.
2. SAW CUT EXISTING PAVEMENT, SEAL JOINT PER ODOT ITEM 423 - CRACK SEALING, TYPE IV. INCLUDE COST IN BID PRICE FOR THE PROPOSED PAVEMENT.
3. IF ADJACENT PAVEMENT IS DAMAGED OR UNDERMINED DURING CONSTRUCTION, ADDITIONAL PAVEMENT SHALL BE SAW CUT AND REMOVED OR MILLED IN ORDER TO PROVIDE A SOUND PAVEMENT EDGE AT NO ADDITIONAL COST TO THE PROJECT.
4. IN THE EVENT THAT THE SAW CUT WOULD LIE WITHIN 3 FEET OF THE EDGE OF PAVEMENT OR FACE OF CURB, THE PAVEMENT REPLACEMENT SHALL EXTEND TO THE EDGE OF PAVEMENT OR FACE OF CURB.
5. ALL TYPES (1, 2, & 3) OF 703.11 BEDDING STRUCTURAL BACKFILL WILL BE ACCEPTED.

PAY LIMITS - TRENCH & ROADWAY DETAIL
FOR D.I.P.
(C175)
REV 9/30/2020

14TH STREET WATERLINE
REPLACEMENT
CITY OF CANTON

DATE: _____

REVISIONS		
Δ	DATE	DESCRIPTION
2	-	ADDENDUM #2
-	-	-
-	-	-
-	-	-
-	-	-
-	-	-
-	-	-

PROJECT NO.: _____

DRAWN BY: _____

CHECKED BY: _____

DATE ISSUED: _____

CONSTRUCTION
DETAILS