

**ADDENDUM ONE  
WQ BMP (LANDSCAPE) MAINTENANCE  
WARNER PARK  
CONTRACT NO. S-17-001  
CITY OF CHATTANOOGA, TENNESSEE**

The following changes shall be made to the Request For Proposals:

**Clarification**

The City of Chattanooga is soliciting Requests for Proposals (RFP) from qualified landscape vendors for the installation and tree care as well as one year of routine maintenance. This includes but is not limited to sourcing, delivery, installation, and regular repairs of all plant materials, mulch, and temporary matting, soil amendments, and pavers. The Vendor shall also include a twelve-month maintenance and warranty period for all plant materials, with the exception of seeded areas, for which the Vendor is responsible until specified seed mixes are established and in sound condition, even if such responsibility extends beyond one year from the project start date.

***Warner Park Narrative:***

The Warner Park Bioretention Demonstration project is intended to demonstrate different methods of bioretention planting design that vary in terms of cost versus labor priorities and design features & constraints. The project will serve as both a showcase for to inform the region's designers, as well as a living laboratory for the City's own assessment of the most cost-effective and low maintenance way to design vegetated stormwater management devices.

With this in mind, the plant palette (see attachments) is broad, and uses some species not previously used in stormwater basins, in an effort to find new resilient species for the design context. Given that sourcing some of these species may be difficult, City staff will make themselves available for inquiries regarding sourcing and supply of the plant materials. Additionally, all plant locations shall be approved by Landscape Architect prior to installation, and Landscape Architect requires that a pre-construction meeting occur before any work is done on site.

January 27, 2017

---

/s/ Justin C. Holland, Administrator  
City of Chattanooga  
Department of Public Works

**Contract Number S-17-001**  
**WQ BMP Maintenance (Landscape) Warner Park**  
**City of Chattanooga**

Item	Description	Approx. Quantity	Unit of Measure	Unit Price	Amount
<b>2810</b>	<b>Trees</b>				
	Acer rubrum'Brandywine', Brandywine Red Maple, 2" caliper B & B, compost complete-in-place	1	EA		
	Ilex cassine, Dahoon Holly, 1 gal container, compost complete-in-place	2	EA		
	Ilex vomitoria, Female Yaupon Holly, straight species, 4' min height, compost complete-in-place	2	EA		
	Ilex vomitoria, Male Yaupon Holly, straight species, 1 gal container, compost complete-in-place	2	EA		
	Liquidambar styraciflua 'Worplesdon', "Worplesdon" Sweetgum , 2" caliper B&B, compost complete-in-place	3	EA		
	Magnolia grandiflora 'Teddy Bear', Teddy Bear Magnolia, 4' min height , compost complete-in-place	3	EA		
	Nyssa sylvatica var. bicolor, Swamp Black Gum, 2" caliper B&B, compost complete-in-place	2	EA		
	Pinus taedus, Loblolly Pine, 4' min height , compost complete-in-place	2	EA		
	Pinus taedus, Loblolly Pine, 8' min height, B&B, compost, complete-in-place	2	EA		
	Platanus x 'Columbia', "Columbia" London Planetree, 2" caliper B&B, compost, complete-in-place	1	EA		
	Prunus caroliniana 'Monus', Carolina Laurel 'Bright n Tight', 6' min height , compost complete-in-place	4	EA		
	Prunus umbellata, Flatwoods Plum, 6' min height , compost complete-in-place	1	EA		
	Quercus lyrata, Overcup Oak, 2" caliper B & B, compost complete-in-place	2	EA		
	Quercus nigra, Water Oak, 2" caliper B & B, compost complete-in-place	1	EA		
	Quercus robur, English Oak, 2" caliper B & B, compost complete-in-place	1	EA		

Quercus phellos, Willow Oak, 2" caliper B & B, compost complete-in-place	1	EA	_____	_____
--	---	----	-------	-------

### **Shrubs**

Myrica cerifera var. pumila, Dwarf Wax Myrtle aka Candleberry, Bayberry, 5 gal, with compost, complete-in-place	4	EA	_____	_____
---	---	----	-------	-------

Rhus aromatica 'Grow-Low', "Grow-Low" Fragrant Sumac, 3 gal, with compost, complete-in-place	9	EA	_____	_____
--	---	----	-------	-------

Ilex verticillata 'Berry Poppins' (female), "Berry Poppins" Winterberry, 2 gal, with compost, complete-in-place	15	EA	_____	_____
---	----	----	-------	-------

Ilex verticillata 'Mr. Poppins' (male), "Mr. Poppins" Winterberry, 1 gal, with compost, complete-in-place	2	EA	_____	_____
---	---	----	-------	-------

Ilex verticillata 'Roberta Case', "Berry Heavy Gold" Winterberry, 2 gal, with compost, complete-in-place	6	EA	_____	_____
--	---	----	-------	-------

Ilex verticillata Jim Dandy, "Jim Dandy" Winterberry, 1 gal, with compost, complete-in-place	2	EA	_____	_____
--	---	----	-------	-------

Hypericum densiflorum, Bushy St. John's Wort, 2 gal, with compost, complete-in-place	3	EA	_____	_____
--	---	----	-------	-------

Ilex vomitoria 'Nana', Dwarf Yaupon Holly , 3 gal, with compost, complete-in-place	12	EA	_____	_____
--	----	----	-------	-------

Ilex glabra 'Chamzin' , Nordic Inkberry, (Male), 2 gal, with compost, complete-in-place	7	EA	_____	_____
---	---	----	-------	-------

Ilex glabra 'Shamrock', "Shamrock" Inkberry Holly (Female), 2 gal, with compost, complete-in-place	35	EA	_____	_____
--	----	----	-------	-------

Itea virginica 'Henry's Garnet', Henry's Garnet Virginia Sweetpire, 1 gal, with compost, complete-in-place	3	EA	_____	_____
--	---	----	-------	-------

Malus sargentii 'Tina', "Tina" Sargent Crabapple , 3 gal, with compost, complete-in-place	2	EA	_____	_____
---	---	----	-------	-------

### **Herbaceous Plugs**

Andropogon glomeratus, Bushy Broomsedge, 5" pot, complete-in-place	10	EA	_____	_____
--	----	----	-------	-------

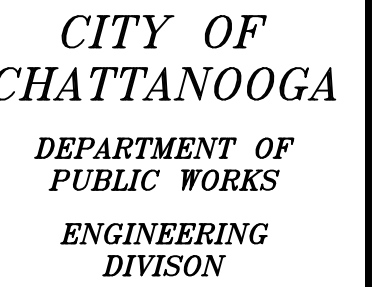
Asclepius tuberosa, Orange Butterfly Weed, 5" pot, complete-in-place	12	EA	_____	_____
--	----	----	-------	-------

Achillea millefolium , Yarrow, Straight spp, 5" pot, complete-in-place	45	EA	_____	_____
--	----	----	-------	-------

Achillea millefolium 'Apple Blossom', "Apple Blossom" Yarrow, 5" pot, complete-in-place	25	EA	<hr/>	<hr/>
Bouteloua gracilis, Blue grama, 2" pot/plug, complete-in-place	20	EA	<hr/>	<hr/>
Carex apalachia, Appalachian Sedge, 2" pot/plug, complete-in-place	10	EA	<hr/>	<hr/>
Carex cherokeensis, Cherokee Sedge, 2" pot/plug, complete-in-place	10	EA	<hr/>	<hr/>
Carex grayii, Grays Sedge, 2" pot/plug, complete-in-place	80	EA	<hr/>	<hr/>
Carex pensylvanica, Pennsylvania Sedge, 2" pot/plug, complete-in-place	10	EA	<hr/>	<hr/>
Carex vulpinoidea, Fox Sedge, 5" pot, complete-in-place	30	EA	<hr/>	<hr/>
Coreopsis lanceolata 'Sterntaler', Sterntaler Lanceleaf Coreopsis, 2" pot/plug, complete-in-place	90	EA	<hr/>	<hr/>
Dalea purpurea, Purple Prairie Clover, 5" pot, complete-in-place	10	EA	<hr/>	<hr/>
Dennstaedtia punctilobula, Hay-Scented Fern, 5" pot, complete-in-place	10	EA	<hr/>	<hr/>
Deschampsia flexuosa, Wavy Hairgrass, 2" pot/plug, complete-in-place	10	EA	<hr/>	<hr/>
Diarrhena americana, American Beak-grass, 2" pot/plug, complete-in-place	10	EA	<hr/>	<hr/>
Doellingeria umbellata, Flat-topped Aster, 2" pot/plug, complete-in-place	15	EA	<hr/>	<hr/>
Echinacea pallida, Pale Purple Coneflower, 5" pot, complete-in-place	20	EA	<hr/>	<hr/>
Elymus hystrix, Bottle Brush Grass, 5" pot, complete-in-place	12	EA	<hr/>	<hr/>
Eragrostis spectabilis, Purple Lovegrass, 2" pot/plug, complete-in-place	60	EA	<hr/>	<hr/>
Eupatorium hyssopifolium, Hyssop-leaf Thoroughwort, 2" pot/plug, complete-in-place	30	EA	<hr/>	<hr/>
Euthamia graminifolia, Flat-top Goldentop, 2" pot/plug, complete-in-place	25	EA	<hr/>	<hr/>

Juncus effusus, Soft Rush, 50-count/flat plug, complete-in-place	50	EA	<hr/>	<hr/>
Liatris spicata , Gayfeather, 2" pot/plug, complete-in-place	8	EA	<hr/>	<hr/>
Liatris spicata 'Alba', White Gayfeather, 2" pot/plug, complete-in-place	12	EA	<hr/>	<hr/>
Panicum clandestinum, Deertongue Grass, 5" pot, complete-in-place	12	EA	<hr/>	<hr/>
Panicum virgatum 'Shenandoah', "Shenandoah" Switchgrass, 32-count/flats plug, complete-in-place	410	EA	<hr/>	<hr/>
Parthenium integrifolium, Wild Quinine, 5" pot, complete-in-place	8	EA	<hr/>	<hr/>
Pycnanthemum flexuosum, Appalachian Mountain Mint, 32-count/flats plug, complete-in-place	100	EA	<hr/>	<hr/>
Ratibida pinnata, Gray-headed Coneflower, 5" pot, complete-in-place	60	EA	<hr/>	<hr/>
Rudbeckia triloba, Brown-eyed Susan, 2" pot/plug, complete-in-place	15	EA	<hr/>	<hr/>
Schizachyrium scoparium, Little Bluestem, 32-count/flats plug, complete-in-place	340	EA	<hr/>	<hr/>
Senna marilandica, Maryland Senna, 1 gal pot, complete-in-place	4	EA	<hr/>	<hr/>
Sorghastrum nutans, Indiangrass, 2" pot/plug, complete-in-place	80	EA	<hr/>	<hr/>
Sporobolus heterolepsis, Prairie Dropseed, 32-count flats/plug, complete-in-place	120	EA	<hr/>	<hr/>
Verbena hastata, Blue Vervain aka Swamp Verbena, 5" pot, complete-in-place	10	EA	<hr/>	<hr/>
Zizia Aurea, Golden Alexanders, 2" pot/plug, complete-in-place	15	EA	<hr/>	<hr/>
<b>Seed</b>				
Ernst Mix XERC00102, Xerces Mid-Atlantic Pollinator Mix @ 8 lbs/ac	190	SF	<hr/>	<hr/>
Ernst Mix 122, FACW Meadow Mix @ 20 lbs/ac	240	SF	<hr/>	<hr/>
Ernst Mix 180-2, Southeast Rain Garden Mix @ 20 lbs/ac	430	SF	<hr/>	<hr/>

Ernst Mix 510, GA Ridge & Valley UPL Meadow Mix @ 20 lbs/ac	190	SF	<hr/>	<hr/>
No-Mow Lawn Seed from Prairie Nursery @ 5 lbs/1000 sf	400	SF	<hr/>	<hr/>
Roundstone Mix 211, Southern Bioswale Short Seed Mix @ 16 lbs/ac	240	SF	<hr/>	<hr/>
Roundstone Mix 219, Southern Infiltration Basin Short Seed Mix @ 14lbs/ac	430	SF	<hr/>	<hr/>
Roundstone Mix 221, Southern Infiltration Basin Mix @ 14 lbs/ac	430	SF	<hr/>	<hr/>
Roundstone Mix 224, Southern Infiltration Basin Economy Mix @ 14 lbs/ac	430	SF	<hr/>	<hr/>
<b>Amendments</b>				
Compost (Aged - per RMG specs) complete-in-place	12	CY	<hr/>	<hr/>
Espoma Organic Soil Acidifier (Basin 2 per plans) complete-in-place	1400	SF	<hr/>	<hr/>
<b>Mulch &amp; Matting</b>				
Pine straw (complete-in-place)	105	CY	<hr/>	<hr/>
Shred Hardwood Mulch (complete-in-place)	145	CY	<hr/>	<hr/>
Straw Matting - Single Net (complete-in-place)	2700	SF	<hr/>	<hr/>
<b>Total</b>			<hr/>	



ADMINISTRATOR:	
JUSTIN HOLLAND	
TY ENGINEER:	
WILLIAM C. PAYNE, P.E.	

*City of Chattanooga  
Warner Park Bioretention  
Existing Conditions*

[illegible]

CONTRACT#	
SCALE:	X
DRAWN:	X
SIGN:	XXX
CHECKED:	XXX

**PRELIMINARY**  
**(SUBJECT TO**  
**CHANGE)**

HEET:	L-100
-------	-------




Z:\Miller, Wyn\Warner Park Bioretention Redesign\CAD files\Warner Park Bioretention.dwg Jan 26,2017 - 7:17am, wmliler



Z:\Miller, Wyn\Warner Park Bioretention Redesign\CAD files\Warner Park Bioretention.dwg Jan 25, 2017 - 3:33pm, wmliller





**CITY OF CHATTANOOGA**  
DEPARTMENT OF PUBLIC WORKS  
ENGINEERING DIVISION

ADMINISTRATOR: JUSTIN HOLLAND  
CITY ENGINEER: WILLIAM C. PAYNE, P.E.

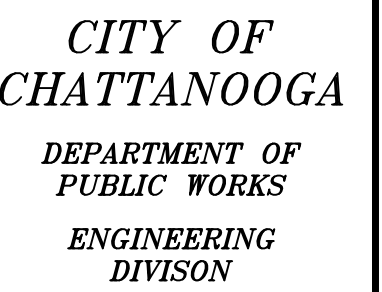
*City of Chattanooga  
Warner Park Bioretention Landscape  
Project Overview*

NO.	DATE	REVISION	SIG.
0	X	X	
X	X	X	
X	X	X	
X	X	X	
X	X	X	
X	X	X	
X	X	X	
X	X	X	
X	X	X	
X	X	X	
X	X	X	
X	X	X	
X	X	X	
X	X	X	
X	X	X	
CONTRACT#			
SCALE:		X	
DRAWN:		X	
DESIGN:		XXX	
CHECKED:		XXX	

**PRELIMINARY  
(SUBJECT TO CHANGE)**

SHEET: LT02





ADMINISTRATOR:	JUSTIN HOLLAND
TY ENGINEER:	WILLIAM C. PAYNE, P.E.

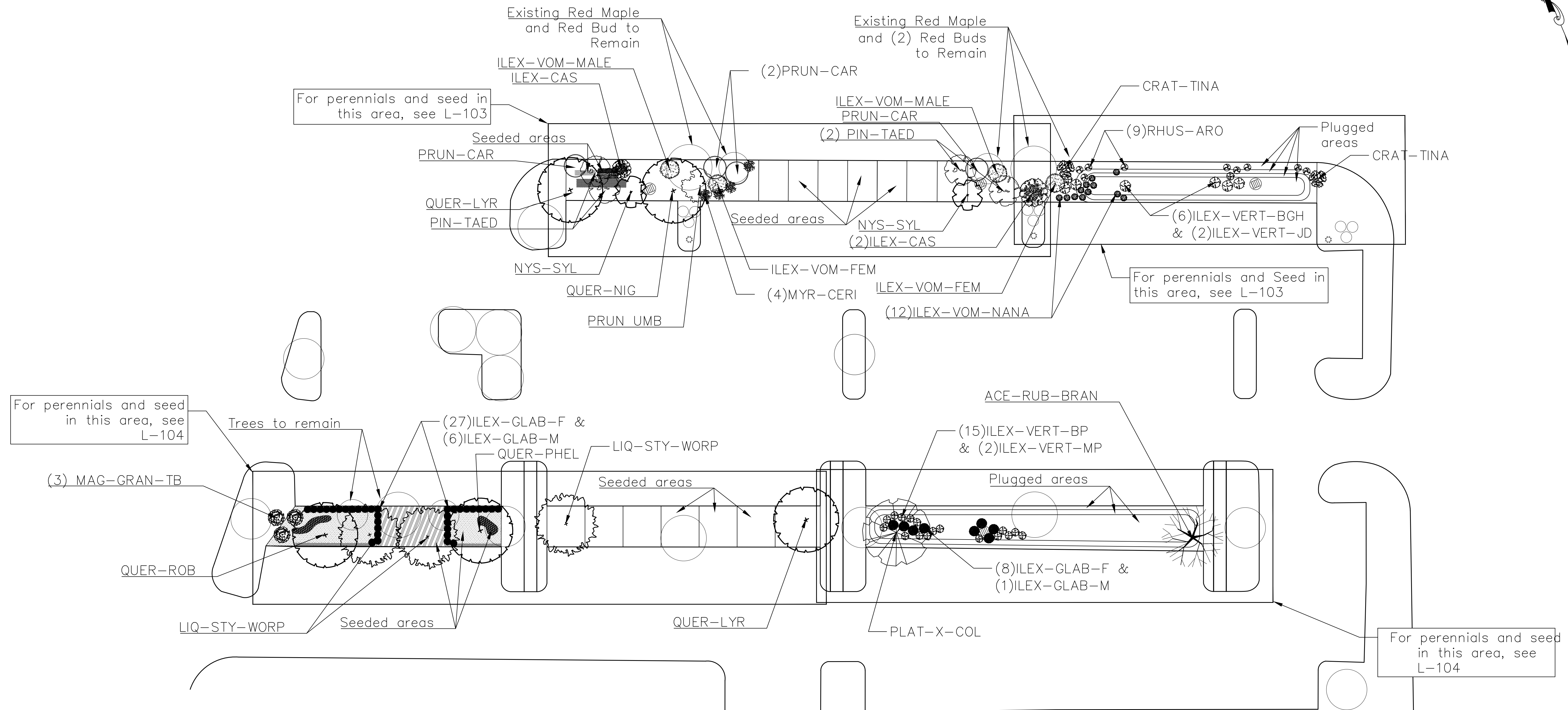
*City of Chattanooga  
Warner Park Bioretention Landscape  
Site Plan*

[illegible]

CONTRACT#	
SCALE:	1=20
DRAWN:	WM
DESIGN:	XXX
CHECKED:	XXX

**PRELIMINARY  
(SUBJECT TO  
CHANGE)**

SHEET:	L-102
--------	-------



BID SET









SHRUBS								
*Landscape Architect to Locate all Containerized Plants on Site								
Zone	Code	Quantity	Scientific Name	Common Name	Minimum Size	Type	Spacing	Remarks
	MYR-CERI	4	<i>Myrica cerifera</i> var. <i>pumila</i>	Dwarf Wax Myrtle aka Candleberry, Bayberry	5 gal	container	4' O.C.	Low, spreading, mounded form, with full, dense foliage, without die-off.
	RHUS-ARO	9	<i>Rhus aromatica</i> 'Grow-Low'	"Grow-Low" Fragrant Sumac	3 gal	container	5' O.C.	Low, spreading, mounded form, with full, dense foliage, without die-off.
	ILEX-VERT-BP-FEM	15	<i>Ilex verticillata</i> 'Berry Poppins' (female)	"Berry Poppins" Winterberry	2 gal	container	36" triangular	Upright, compact, symmetrical form.
	ILEX-VERT-MP- MALE	2	<i>Ilex verticillata</i> 'Mr. Poppins' (male)	"Mr. Poppins" Winterberry	1 gal	container	24" triangular	Upright, compact, symmetrical form. Male Winterberries should be placed in the center of a grouping of female plants.
	ILEX-VERT-BHG-FEM	6	<i>Ilex verticillata</i> 'Roberta Case'	"Berry Heavy Gold" Winterberry	2 gal	container	36" triangular	Upright, loose, spreading form.
	ILEX-VERT-JD- MALE	2	<i>Ilex verticillata</i> Jim Dandy	"Jim Dandy" Winterberry	1 gal	container	24" triangular	Upright, loose, spreading form. Male Winterberries should be placed in the center of a grouping of female plants.
	HYP-DENS	3	<i>Hypericum densiflorum</i>	Bushy St. John's Wort	2 gal	container	4' triangular	Rounded, low form. Full, dense crown.
	ILEX-VOM-NANA	12	<i>Ilex vomitoria</i> 'Nana'	Dwarf Yaupon Holly	3 gal	container	3.5' triangular	Loose mounding form.
	ILEX-GLAB-MALE	7	<i>Ilex glabra</i> 'Chamzin'	Nordic Inkberry, (Male)	2 gal	container	3' linear	Rounded, low form. Full, dense crown. <b>Matching specimens.</b> (Will be used in hedge with female Inkberry so matching size to female is preferred.)
	ILEX-GLAB-FEM	35	<i>Ilex glabra</i> 'Shamrock'	"Shamrock" Inkberry Holly (Female)	2 gal	container	3' linear	Rounded, low form. Full, dense crown. <b>Matching specimens.</b>
	ITEA-VIR	3	<i>Itea virginica</i> 'Henry's Garnet'	Henry's Garnet Virginia Sweetspire	1 gal	container	4' triangular	Full dense foliage, matching specimens.
	MAL-SARG	2	<i>Malus sargentii</i> 'Tina'	"Tina" Sargent Crabapple	3 gal	container	n/a	Shrub form. Spreading, broad form. Full, loose foliage.

SEEDING				
SEED				
	Code	Area of Coverage (sf)	Name, Supplier, & Description	Seeding Rate
	ERNST XER	190	Ernst Mix XERC00102, Xerces Mid-Atlantic Pollinator Mix	8 lbs/ac
	ERNST122	240	Ernst Mix 122, FACW Meadow Mix	20 lbs/ac
	ERNST180-2	430	Ernst Mix 180-2, Southeast Rain Garden Mix	20 lbs/ac
	ERNST510	190	Ernst Mix 510, GA Ridge & Valley UPL Meadow Mix	20 lbs/ac
	NO-MOW	430	No-Mow Lawn Seed from Prairie Nursery	5 lbs/1000 sf
	RS 211	240	Roundstone Mix 211, Southern Bioswale Short Seed Mix	16 lbs/ac
	RS 219	430	Roundstone Mix 219, Southern Infiltration Basin Short Seed Mix	14lbs/ac
	RS 221	430	Roundstone Mix 221, Southern Infiltration Basin Mix	14 lbs/ac
	RS 224	430	Roundstone Mix 224, Southern Infiltration Basin Economy Mix	14 lbs/ac

CITY OF  
CHATTANOOGA  
DEPARTMENT OF  
PUBLIC WORKS  
ENGINEERING  
DIVISION

*City of Chattanooga  
Warner Park Bioretention Landscape  
Plant Matrix*

**PRELIMINARY  
BID SET**