



Board of County Commissioners • Escambia County, Florida

Paul R. Nobles/Purchasing Manager
Office of Purchasing

August 6, 2018

To: All Known Prospective Bidders

ADDENDUM NUMBER 1:

Re: PD 17-18.067 Pensacola Beach Sign Frame Replacement

All:

Your firm recently received an Invitation to Bid for the above-mentioned specification.

This Addendum Number 1 provides an update regarding the ad-alternate bid of replacing the entire sign. Please review the attached specifications and drawing before submitting your bid.

This Addendum Number 1 is furnished to all known prospective bidders. Please sign and return one copy of this Addendum, with original signature, with your bid as an acknowledgement of your having received same, or acknowledge your receipt using the form included in the original solicitation. You may photo copy this form for your records.

Sincerely,

A handwritten signature in blue ink, appearing to read "Jeffrey Lovingood", is written over the word "Sincerely,".

Jeffrey Lovingood
Purchasing Specialist

Acknowledgement of Receipt of Addendum:

SIGNED: _____

COMPANY: _____

JDL



ESCAMBIA COUNTY PURCHASING

August 6, 2018

ADDENDUM #1

Changes to the Drawings:

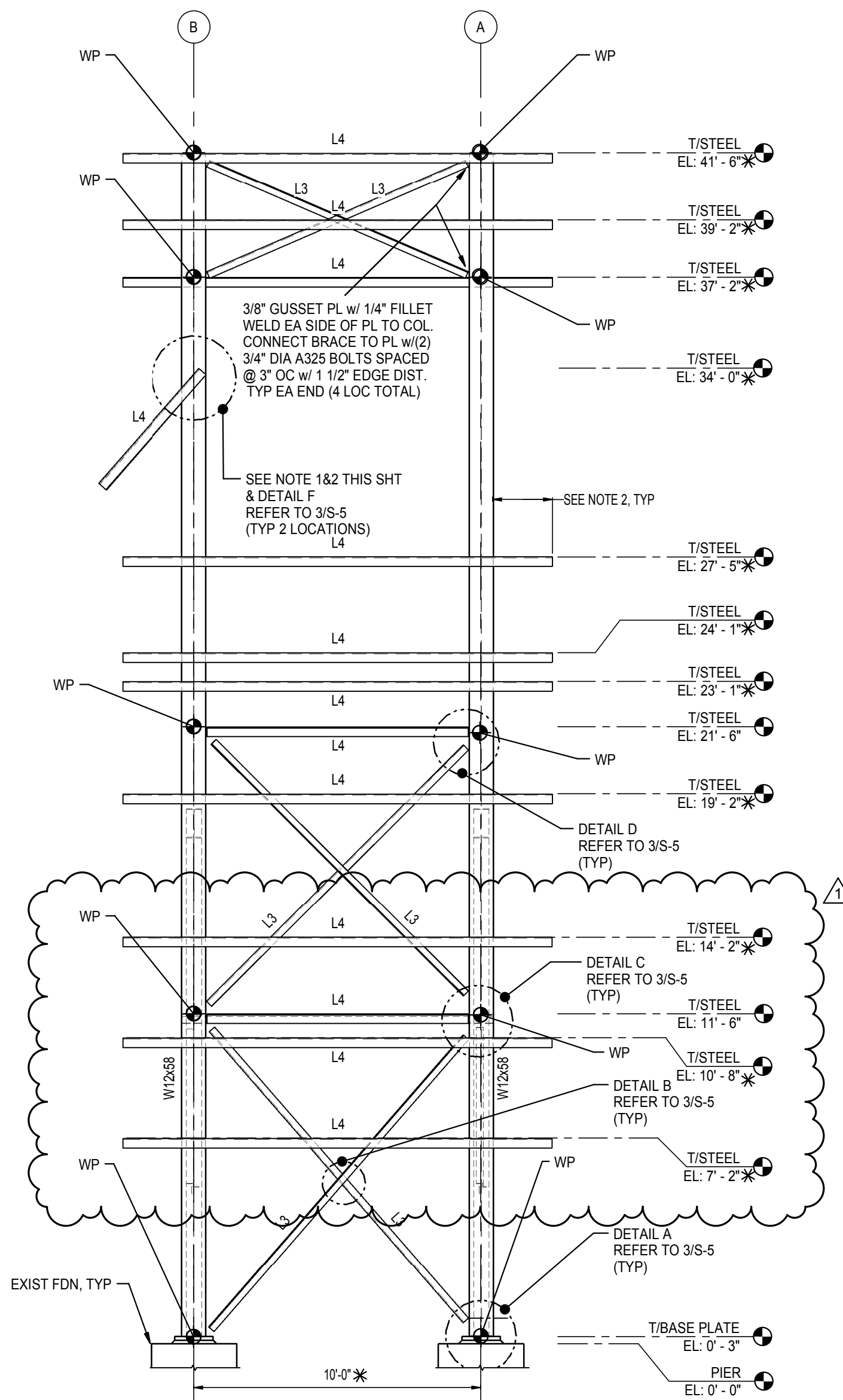
Drawing S-2: PROVIDE PRICING FOR A NEW SIGN ALTERNATIVE OPTION SHALL BE REVISED AS FOLLOWS:

1. The new sign shall meet the following requirements:
 - a. The appearance and functionality shall match that of the existing sign (size, color, lighting, display pattern, orientation, etc.)
 - b. Materials shall be corrosion resistant. Sign shall consist of polycarbonate panels with 5000 series aluminum casing. Provide an 1/8" rubber gasket between aluminum and carbon steel connections.
 - c. Provide at minimum the following sign-to-frame fasteners (5/8" dia 316 SS bolts)
 - i. Top Signs: (18) bolts each, (36) bolts total
 - ii. Middle Sign: (24) bolts
 - iii. Bottom Sign: (18) bolts
 - d. Lights shall use modern, efficient luminaires (LED) that produce the same visual appearance as the existing sign. Illumination shall be evenly distributed.
 - e. Controller shall be efficient and require minimal maintenance.
 - f. Electrical equipment shall be UL listed, comply with NFPA 70, and be rated for ambient environment.
 - g. Sign load design criteria shall meet or exceed the load design criteria for the frame as outlined on S-2.
 - h. Price shall reflect the furnished and installed cost of a new sign.
 - i. (10) year warranty shall be provided for sign panels and casings.
 - j. (5) year warrant shall be provided for electrical equipment.

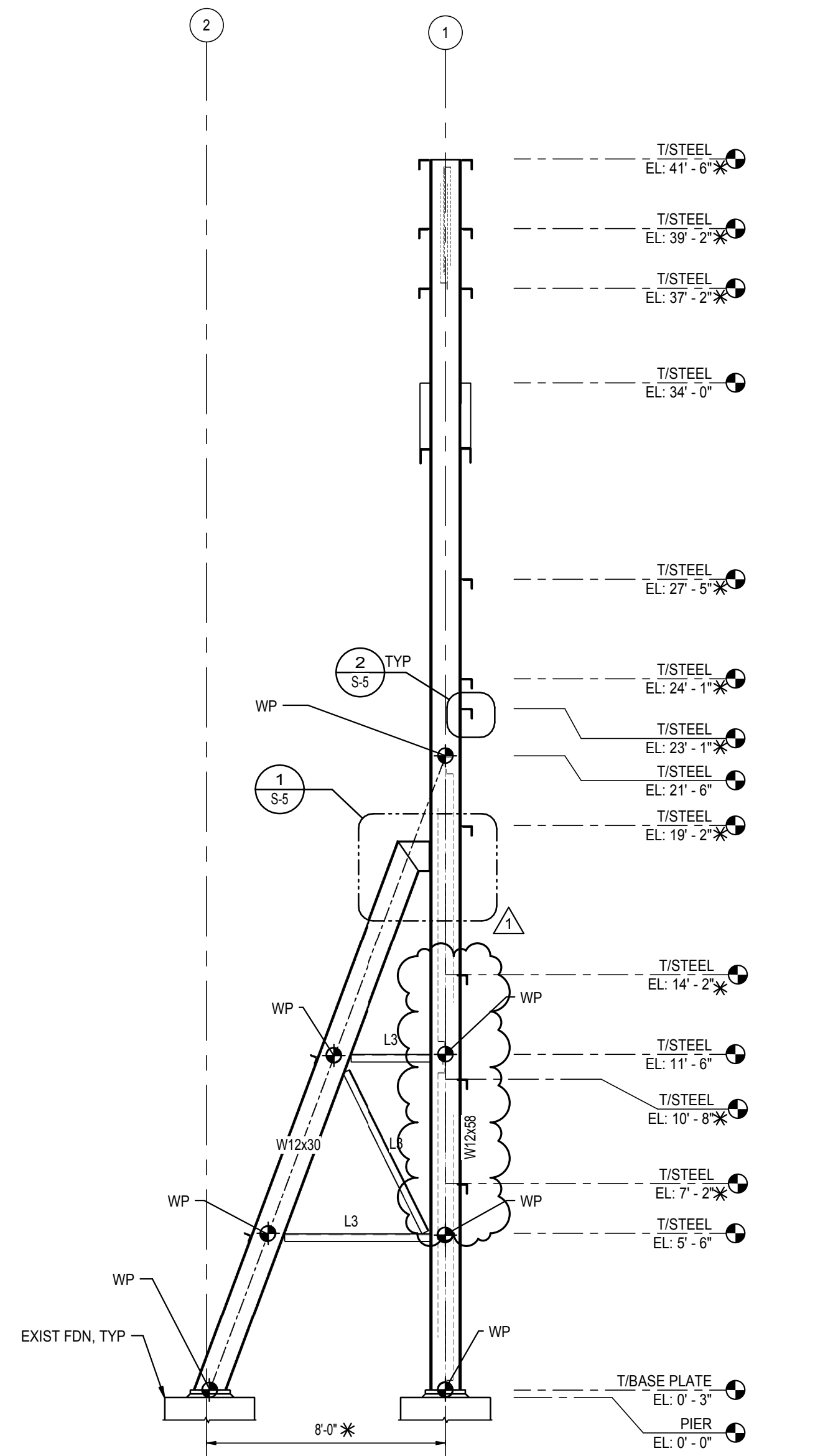
Drawing S-4: FRAMING ELEVATIONS, COLUMN LAYOUT, AND BASE PLATE DETAIL

1. Refer to the attached drawing S-4 for framing revision at bottom sign. Provide (3) L4x4x3/8 angles for bottom sign. Elevations and length shall be coordinated with new bottom sign and field measurements. Connections to match those proposed for middle and top signs and as shown on 2/S-5.

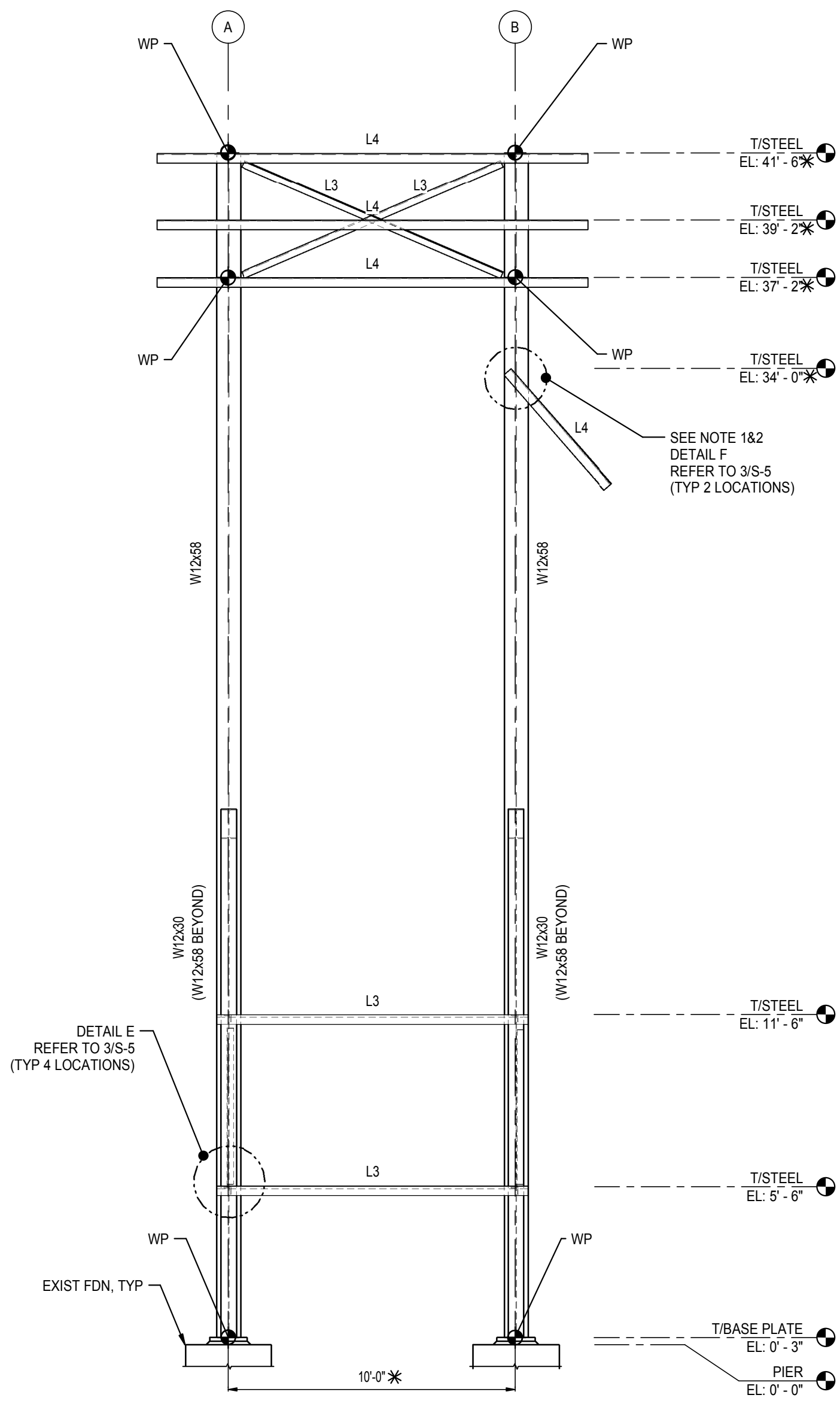
END OF ADDENDUM NO. 1



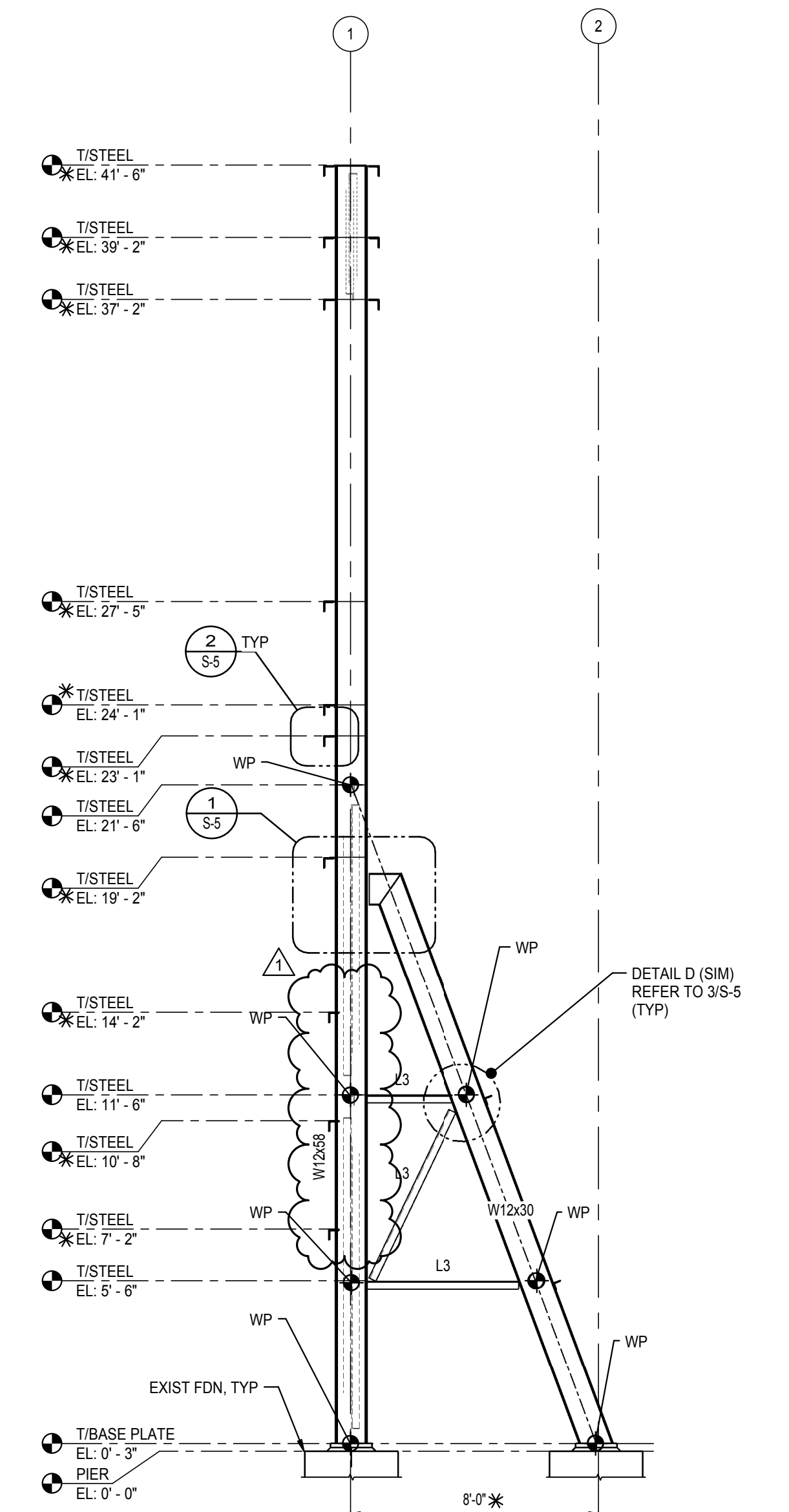
1 WEST ELEVATION
S-4 1/4" = 1'-0"



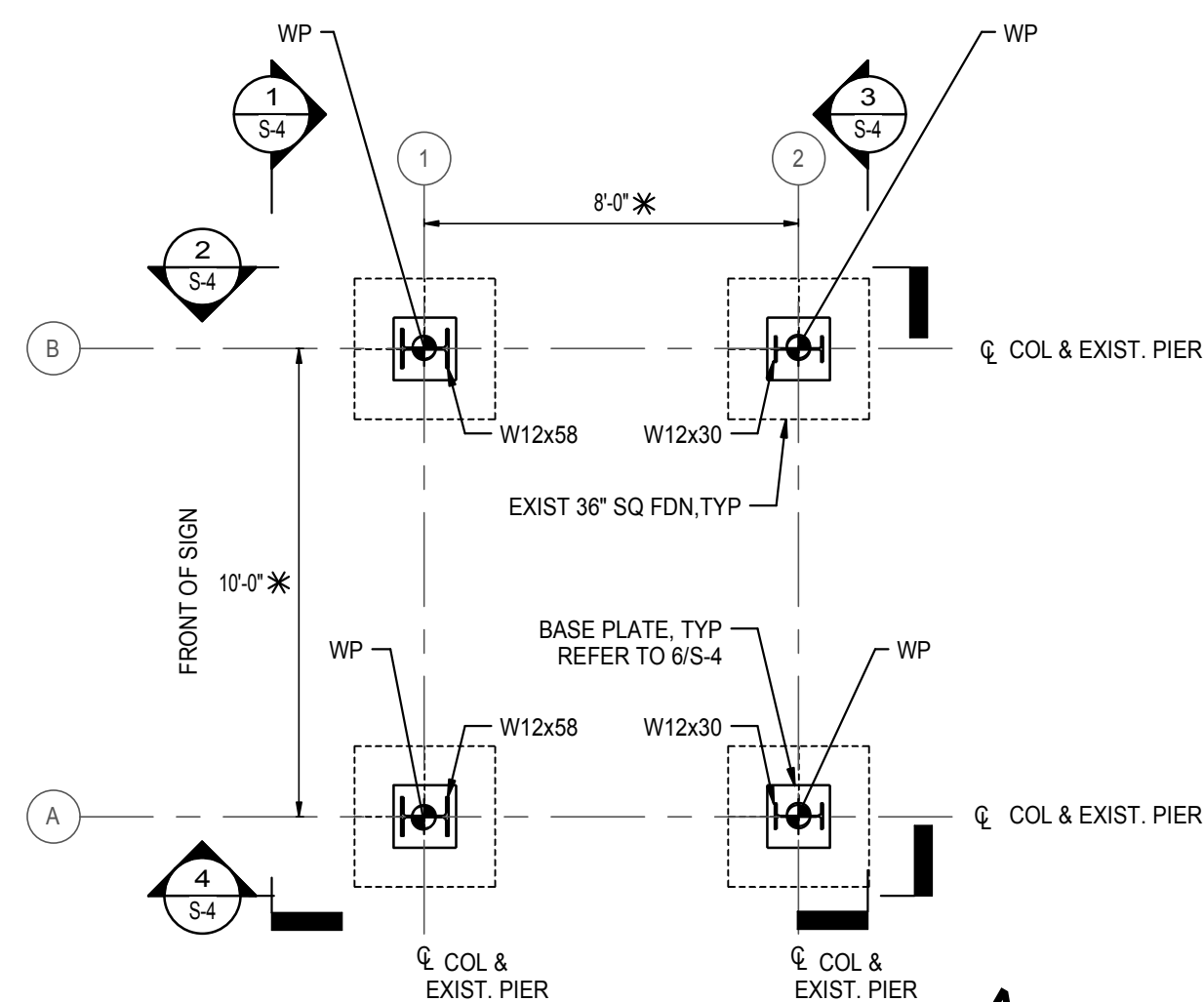
2 NORTH ELEVATION
S-4 1/4" = 1'-0"



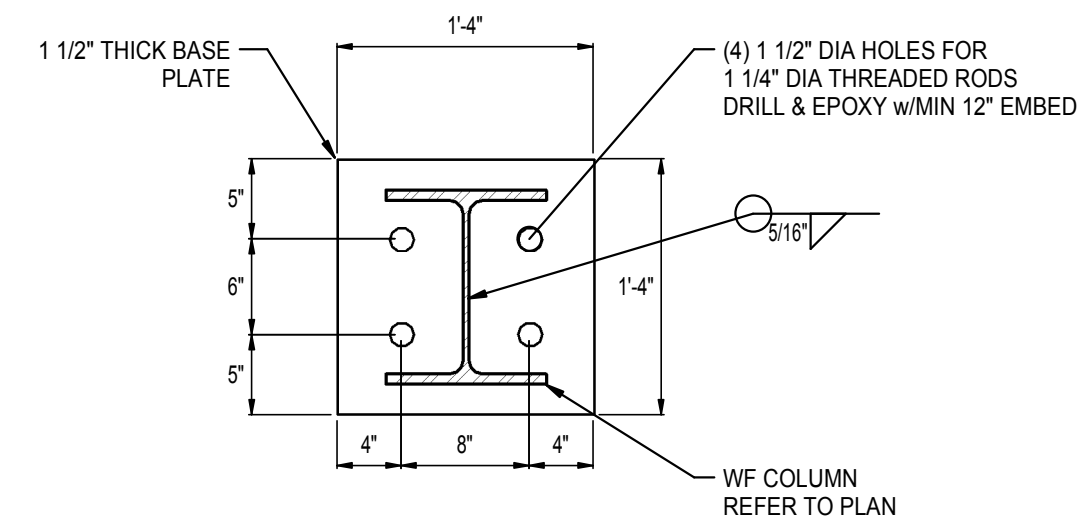
3 EAST ELEVATION
S-4 1/4" = 1'-0"



4 SOUTH ELEVATION
S-4 1/4" = 1'-0"



5 COLUMN LAYOUT
S-4 1/4" = 1'-0"



6 BASE PLATE DETAIL
S-4 1" = 1'-0"

NOTES:

1. CONTRACTOR SHALL FIELD VERIFY ELEVATIONS OF SIGN SUPPORT ANGLES BEFORE MATERIAL PROCUREMENT, FABRICATION AND ERECTION.
2. CONTRACTOR SHALL COORDINATE SIGN SUPPORT ANGLE LENGTHS AND OVERHANGS WITH SIGNS BEFORE FABRICATION AND ERECTION.
3. BASE PLATES SHALL BE GROUTED IMMEDIATELY AFTER FINAL ANCHOR BOLT TIGHTENING. REFER TO GENERAL NOTES FOR ADDITIONAL REQUIREMENTS.
4. DIMENSIONS AND ELEVATIONS BASED OFF TOP OF EXISTING PIER ELEVATION= 0'-0".

LEGEND:

- * CONTRACTOR TO VERIFY DIM/ ELEV
- WP WORK POINT
- L3 DENOTES L3x3x3/8
- L4 DENOTES L4x4x3/8

PENSACOLA BEACH SIGN FRAME REPLACEMENT
GULF BREEZE, FLORIDA

DATE	REV	DESCRIPTION
AUGUST 2018	0	ISSUED FOR BID
MJT	1	Revision 1
RC		
CEL		
MJT		
CEL		

ISSUED FOR BID
NOT FOR CONSTRUCTION
CHAD E. LYNER
FLORIDA - CERTIFICATION NUMBER
66277

SHEET TITLE:
FRAMING ELEVATIONS, COLUMN LAYOUT, AND BASE PLATE DETAIL

SHEET NUMBER:
S-4