



OFFICE OF PROCUREMENT SERVICES
335 FOUR MILE ROAD
CONWAY, SC 29526-6005

AMENDMENT/ADDENDUM No. 1

Posting Date: Monday, December 13, 2021

Solicitation Number: 2122-33VS

Description: Midland Elementary (ME) HVAC Renewal

ADDENDA: Addenda shall be issued prior to the bid opening date and time for the purposes of modifying or interpreting the Contract Documents through additions, deletions, clarifications or corrections. No addendum shall be issued later than four (4) days prior to the bid opening date except to a) withdraw the Invitation for Bids, or b) to postpone the bid opening date and time. When an addendum is issued for the purposes of postponing the bid opening date and time, the addendum shall establish the new bid opening date and time no earlier than five (5) days after the addendum issue date. Addenda shall be posted on the on-line bidding source(s) stated in the Invitation for Bids. A Bidder shall acknowledge receipt of all addenda issued by identifying the addendum number and the date of issuance with the Bidder's initials in the spaces provided on the Official Bid Form or the bid shall be found non-responsive in accordance with the District's Procurement Code. If this solicitation is amended, then all terms and conditions which are not modified remain unchanged.

INTERPRETATIONS AND CLARIFICATIONS: Requests for additional information or questions regarding error, omission or clarification of any portion of the Bid Documents or the Contract Documents or any addendum, shall be submitted in writing to the District Bid Contact Person stated in the Invitation for Bids by e-mail or facsimile no later than five (5) days prior to the bid opening date and time unless an earlier date is stated on the Invitation for Bids or as may be amended. Any interpretations, corrections, or changes to the Bid Documents or the Contract Documents made in any other manner than by a written addendum shall not be binding, and Bidders shall not rely upon them. Any information given a prospective Bidder concerning a solicitation will be furnished promptly to all other prospective bidders as an addendum to the solicitation, if that information is necessary for submitting offers of if the lack of it would be prejudicial to other prospective bidders. See clause entitled "Bidder Representations." We will not identify you in our answer to your question. The District seeks to permit maximum practicable competition. Bidders are urged to advise the Procurement Specialist – as soon as possible – regarding any aspect of this procurement, including any aspect of the solicitation that unnecessarily or inappropriately limits full and open competition.

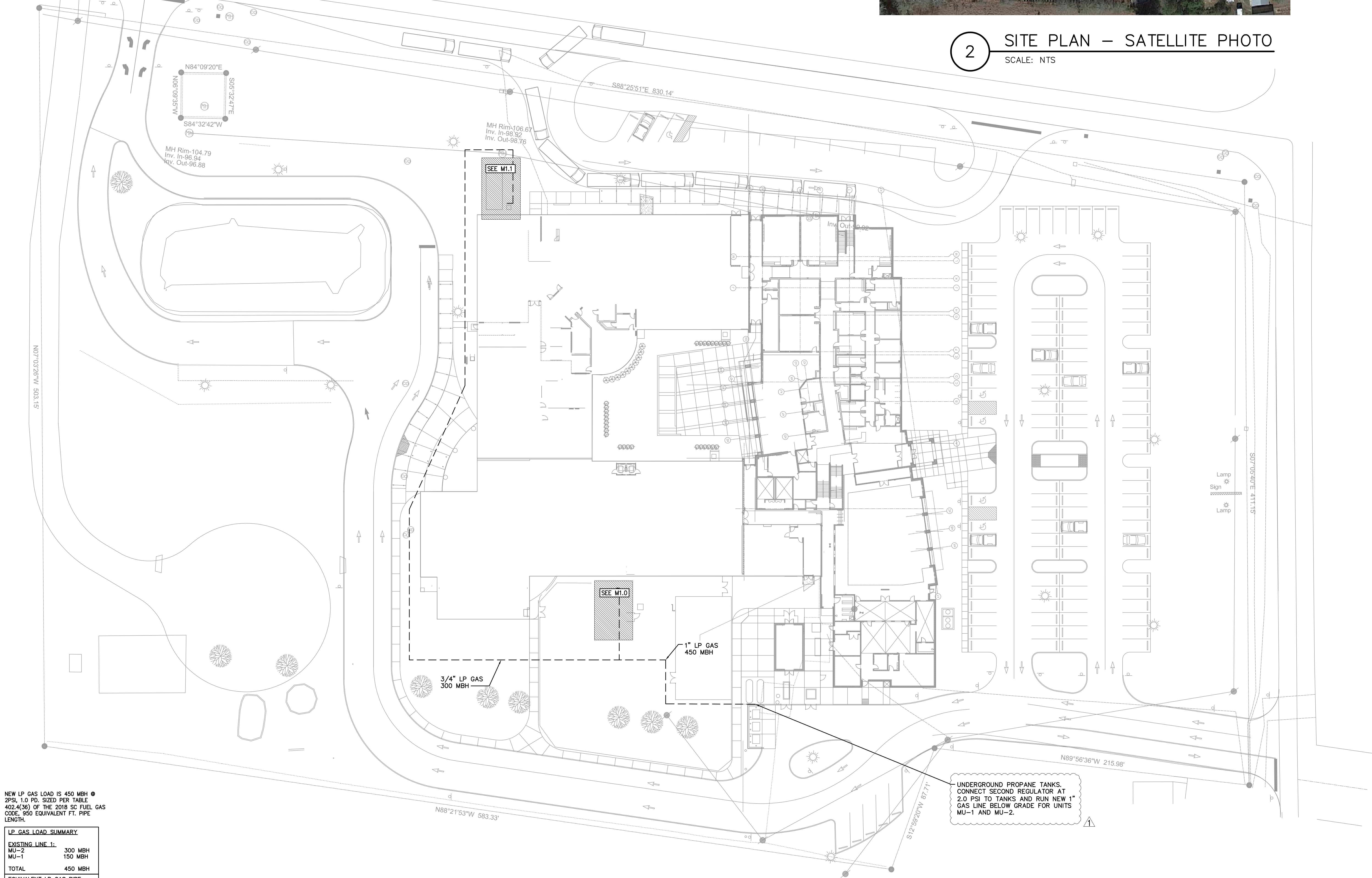
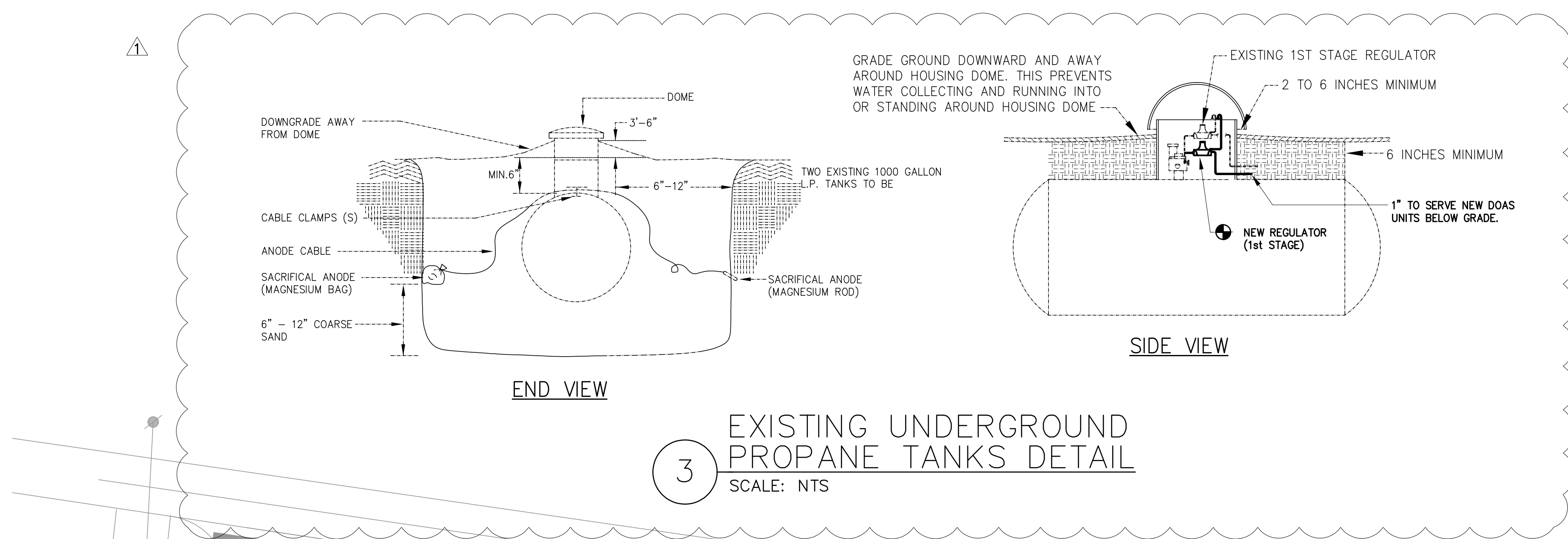
NOTE: The bid opening date has been moved from ~~12/16/2021~~ to **12/17/2021**. The time remains the same.

1. Test and balance shall be performed by Horry County Schools under a separate contract. The contractor shall coordinate with the TAB contractor to allow them to perform their scope of work.
2. Sheets M1.0 and M1.1. Provide carbon monoxide detectors in lieu of carbon dioxide detector in return duct from makeup air units. CO detector shall be integrated into the fire alarm system. Detectors shall be provided only under alternate 1, gas heating option.
3. Sheet M2.0. Packaged Energy Recovery Unit – Electric Heat.
 - a. Notes 22, 23 and 24. Provide a full five year parts and labor warranty on all components for the energy recovery units.
 - b. Notes 29 and 30. Under alternate 2, seacoast protective coatings shall be factory applied for the condenser, evaporator and hot gas reheat coil. Coating for the interior panels in contact with the air flow may be field applied at the manufacturer's/contractor's option.

4. Sheet M2.0. Alternate 1 - Packaged Energy Recovery Unit – Gas Heat.
 - a. Notes 23, 24 and 25. Provide a full five year parts and labor warranty on all components for the energy recovery units.
 - b. Notes 30 and 31. Under alternate 2, seacoast protective coatings shall be factory applied for the condenser, evaporator and hot gas reheat coil. Coating for the interior panels in contact with the air flow may be field applied at the manufacturer's/contractor's option.
5. Exposed PVC conduit is not allowed by the specifications.
6. Sheet M1.2. Existing propane tanks are below grade. Please refer to updated plan issued as part of the addendum for piping details.

Attachments:

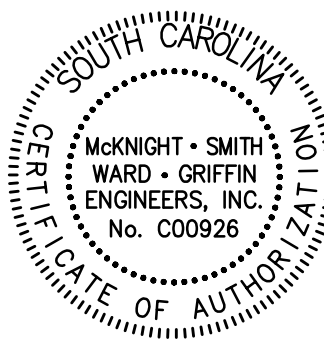
Sheet M1.2 (Mechanical Floor Plan Alt #1 – LP Gas Plan) – Revised 12/13/2021



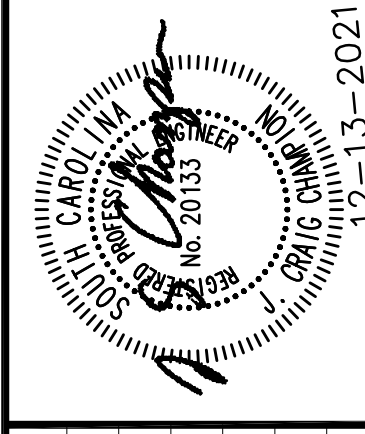
NEW LP GAS LOAD IS 450 MBH @ 2PSI, 1.0 PD. SIZED PER TABLE 402.4(36) OF THE 2018 SC FUEL GAS CODE, 950 EQUIVALENT FT. PIPE LENGTH.

LP GAS LOAD SUMMARY	
EXISTING LINE 1:	
MU-2	300 MBH
MU-1	150 MBH
TOTAL	450 MBH
EQUIVALENT LP GAS PIPE LENGTH TO UNIT	
MU-1	250 FT.
MU-2	950 FT.

UNDERGROUND PROPANE TANKS. CONNECT SECOND REGULATOR AT 2.0 PSI TO TANKS AND RUN NEW 1" GAS LINE BELOW GRADE FOR UNITS MU-1 AND MU-2.



**McKNIGHT • SMITH
WARD • GRIFFIN**
ENGINEERS, INCORPORATED
4223 South Boulevard
Charlotte, NC 28209
704/527-2112



JOB NUMBER	REVISION DATES	REVISION DESCRIPTION
21-098	12/13/2021	
DESIGN BY: JWC		
CHECKED BY: JWC		
DATE: 11/17/2021		

MIDLAND ELEMENTARY
3011 NICHOLS HWY
GALIVANTS FERRY, SC, 29544
HVAC RENEWAL

MECHANICAL FLOOR PLAN
ALT #1 - LP GAS PLAN