

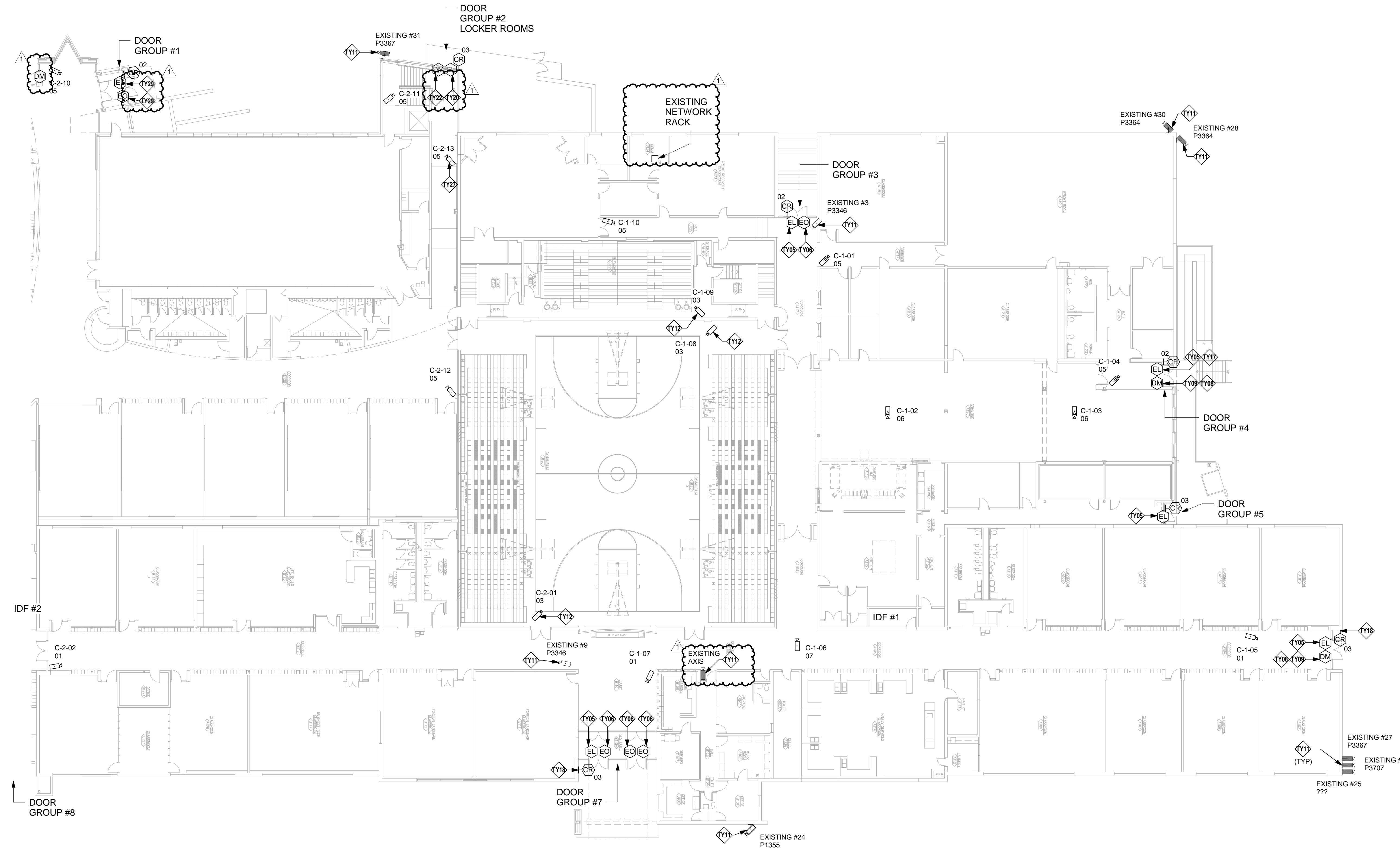
PLATTE COUNTY SCHOOL DISTRICT R-III
HIGH SCHOOL AND PAXTON SECURITY UPGRADES
1501/1601 BRANCH ST. PLATTE CITY, MO 64079

REVISION	DATE
1 Addendum 1	12/3/18

HEI JOB NO:	185001749
DATE:	11/6/18
DESIGNED BY:	RNM

SECURITY PLAN NOTES

- TY05 RETROFIT PANIC HARDWARE WITH QEL ELECTRONIC LATCHING MECHANISM. RETROFIT PANIC HARDWARE WITH REQUEST TO EXIT AND LATCH BOLT MONITOR. DOOR SHALL BE INDEPENDENTLY RELEASED BY VALID CREDENTIAL.
- TY06 RETROFIT PANIC HARDWARE WITH QEL ELECTRONIC LATCHING MECHANISM. RETROFIT PANIC HARDWARE WITH REQUEST TO EXIT AND LATCH BOLT MONITOR.
- TY08 RETROFIT WITH INTEGRAL REQUEST TO EXIT.
- TY09 RETROFIT WITH INTEGRAL LATCH BOLT MONITOR.
- TY11 EXISTING CAMERA. PROVIDE VMS LICENSE, PROGRAM INTO MAPS, AND INTEGRATE/ASSOCIATE WITH RESPECTIVE DOOR.
- TY12 CONTRACTOR TO DETERMINE EXACT LOCATION OF CAMERA. CAMERA SHALL CAPTURE ALL SEATING IN FIELD OF VIEW. PROVIDE PENDANT OR WALL MOUNTING HARDWARE AS REQUIRED.
- TY17 REPLACE ARMORED CORD ASSEMBLY
- TY18 REPLACE CARD READER BOX WITH ONE OF APPROPRIATE SIZE.
- TY20 REPLACE DOOR HARDWARE SET WITH VON DUPRIN 98 SERIES WITH QEL, INTEGRAL REQUEST TO EXIT AND LATCH BOLT MONITOR.
- TY22 REPLACE DOOR HARDWARE SET WITH VON DUPRIN 98 SERIES WITH INTEGRAL REQUEST TO EXIT AND LATCH BOLT MONITOR.
- TY27 INSTALL CAMERA ON LOWER/BASEMENT LEVEL WATCHING LOCKER ROOM HALL.
- TY29 EXISTING YALE RIM DEVICE. RETROFIT OR IF POSSIBLE WITH ELECTRIFIED LATCH, INTEGRAL REQUEST TO EXIT, AND LATCH BOLT MONITOR. ADD DOOR MONITORS. IF REPLACING, USE VON DUPRIN 35A SERIES AND EXISTING CYLINDER BLOCKING PLATES IF POSSIBLE.



1 HIGH SCHOOL SECURITY PLAN - AREA B
1/16" = 1'-0"

NOTE:

THESE DRAWINGS ARE SCHEMATIC IN NATURE. EXISTING CONDITIONS ARE FROM GENERAL OBSERVATIONS AND ARE NOT EXHAUSTIVE OF ALL FIELD CONDITIONS.

THE LOCATIONS AND DEVICES DEPICTED ON DRAWINGS ARE REPRESENTATIVE. THE CONTRACTOR SHALL SURVEY SITE AND PROVIDE A COMPLETE AND FUNCTIONING SYSTEM MEETING THE MINIMUM REQUIREMENTS THE DISTRICT STANDARDS AND SECURITY DRAWINGS.

INSTALLATIONS SHALL COMPLY WITH ALL LOCAL BUILDING, FIRE, AND ELECTRICAL CODES. ALL INSTALLATIONS MUST SATISFY THE AUTHORITY HAVING JURISDICTION.