

REVISIONS	DATE
1. Addendum 1	12/3/18

PLATTE COUNTY SCHOOL DISTRICT R-III
HIGH SCHOOL AND PAXTON SECURITY UPGRADES
1501/1601 BRANCH ST. PLATTE CITY, MO 64079

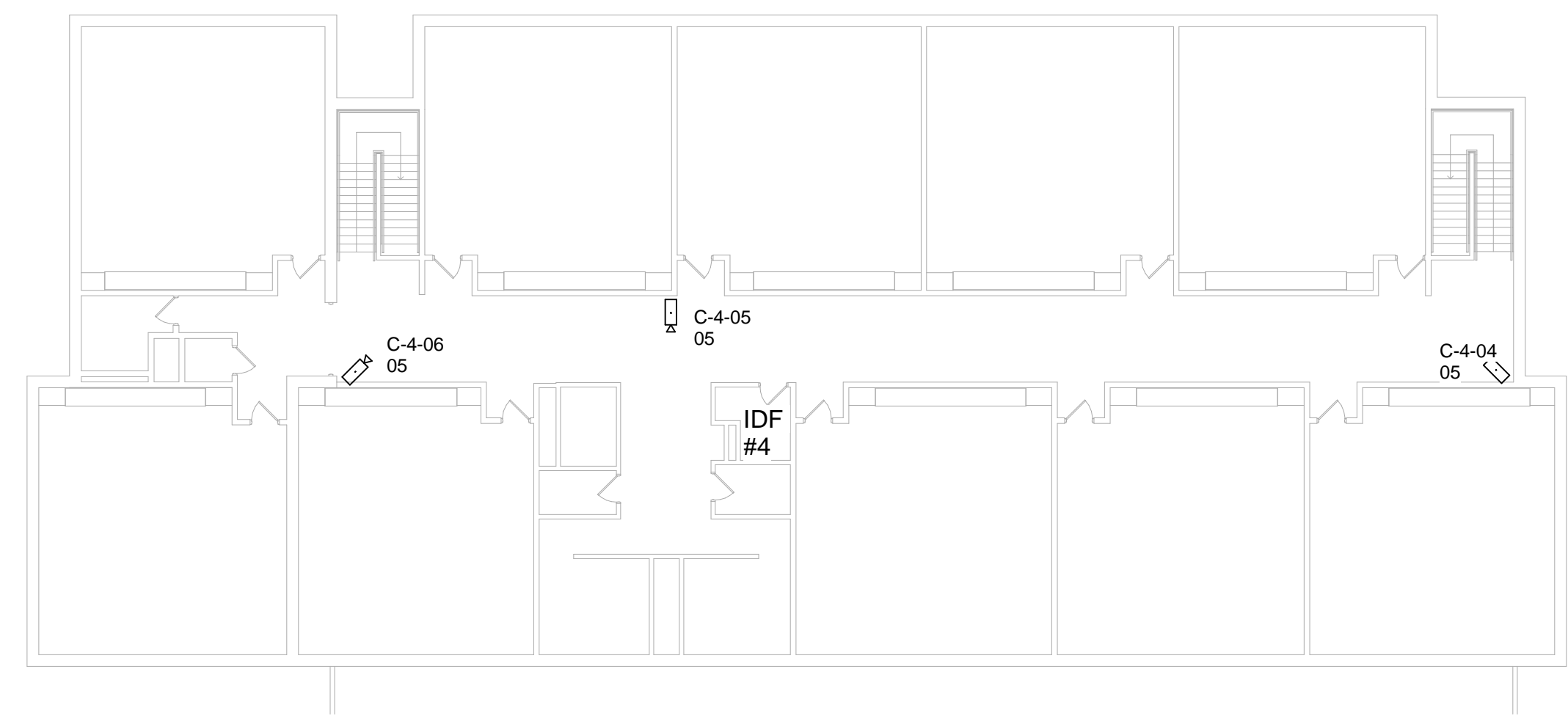
REVISION	DATE
1 Addendum 1	12/3/18

HEI JOB NO:	1850001749
DATE:	11/6/18
DESIGNED BY:	RNM

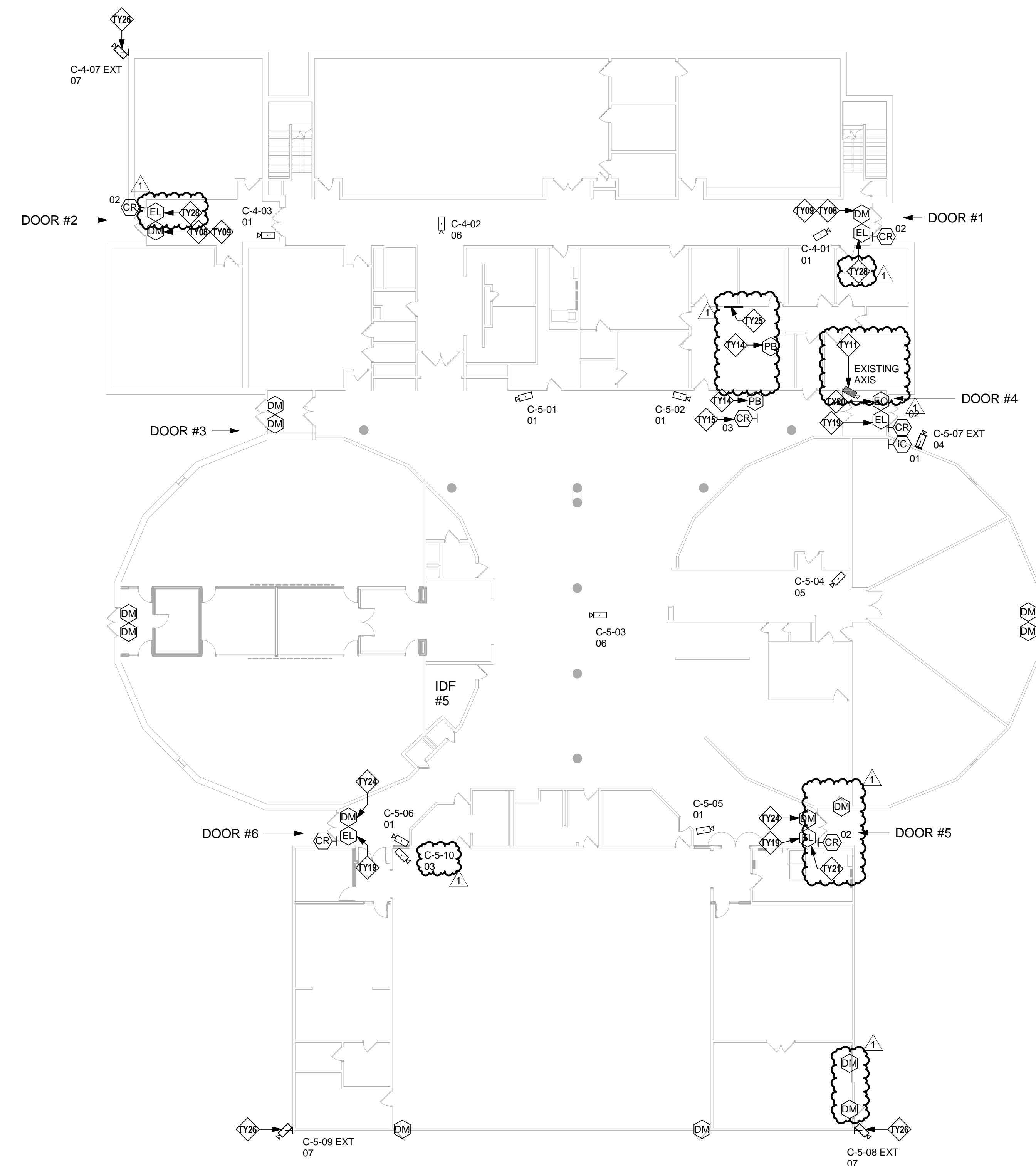
SHEET NO.
TY103

SECURITY PLAN NOTES

- TY08 RETROFIT WITH INTEGRAL REQUEST TO EXIT.
- TY09 RETROFIT WITH INTEGRAL LATCH BOLT MONITOR.
- TY11 EXISTING CAMERA. PROVIDE VMS LICENSE, PROGRAM INTO MAPS, AND INTEGRATE/ASSOCIATE WITH RESPECTIVE DOOR.
- TY14 COORDINATE PLACEMENT OF PANIC BUTTONS WITH OWNER.
- TY15 CARD READER AT DESK TO ALLOW REMOTE ENTRY RELEASE AND ENROLLMENT OF CREDENTIALS. COORDINATE EXACT PLACEMENT WITH OWNER.
- TY19 REPLACE DOOR HARDWARE SET WITH VON DUPRIN 98 SERIES WITH QEL. INTEGRAL REQUEST TO EXIT AND LATCH BOLT MONITOR. DOOR SHALL BE INDEPENDENTLY RELEASED BY VALID CREDENTIAL.
- TY20 REPLACE DOOR HARDWARE SET WITH VON DUPRIN 98 SERIES WITH QEL. INTEGRAL REQUEST TO EXIT AND LATCH BOLT MONITOR.
- TY21 REPLACE AND REPAIR MULLION WITH NEW KEYED MULLION.
- TY24 REPLACE WITH VON DUPRIN HARDWARE WITH INTEGRAL REQUEST TO EXIT AND LATCH BOLT MONITOR.
- TY25 PROVIDE 55" VMS DISPLAY. PROVIDE NEW POWER, PATHWAY, ARTICULATING MOUNT, AND AV CABLE FOR CONNECTION TO OWNER PROVIDED CLIENT WORKSTATION. COORDINATE EXACT LOCATION WITH OWNER.
- TY26 PROVIDE WALL ARM AND CORNER MOUNT BRACKET.
- TY28 EXISTING VON DUPRIN QEL ELECTRIFIED LATCH. RETROFIT WITH REQUEST TO EXIT AND LATCH BOLT MONITOR. ADD DOOR MONITOR.



2 PAXTON SECURITY LEVEL 2 PLAN
1/16" = 1'-0"



1 PAXTON SECURITY LEVEL 1 PLAN
1/16" = 1'-0"

NOTE:

THESE DRAWINGS ARE SCHEMATIC IN NATURE. EXISTING CONDITIONS ARE FROM GENERAL OBSERVATIONS AND ARE NOT EXHAUSTIVE OF ALL FIELD CONDITIONS.

THE LOCATIONS AND DEVICES DEPICTED ON DRAWINGS ARE REPRESENTATIVE. THE CONTRACTOR SHALL SURVEY SITE AND PROVIDE A COMPLETE AND FUNCTIONING SYSTEM MEETING THE MINIMUM REQUIREMENTS THE DISTRICT STANDARDS AND SECURITY DRAWINGS.

INSTALLATIONS SHALL COMPLY WITH ALL LOCAL BUILDING, FIRE, AND ELECTRICAL CODES. ALL INSTALLATIONS MUST SATISFY THE AUTHORITY HAVING JURISDICTION.