



City of Chattanooga

Mayor Andy Berke

August 21, 2018

Citywide Right-Of-Way Concrete Contract T-18-008-201 - **Addendum #2**

The optional pre-bid meeting was held on Tuesday, August 7th 2018 at 10:00am.

Questions from RFI email by Seth Williams; responses are as follows:

1) *Misc – F Segmental Retaining Wall. => The description calls for modular units... Is this considered a stacked “Redi Rock” wall? Or is this a CMU retaining wall?*

– Neither. This refers to a 16” x 6” Basic Retaining Wall Block, similar the attached image and specifications.

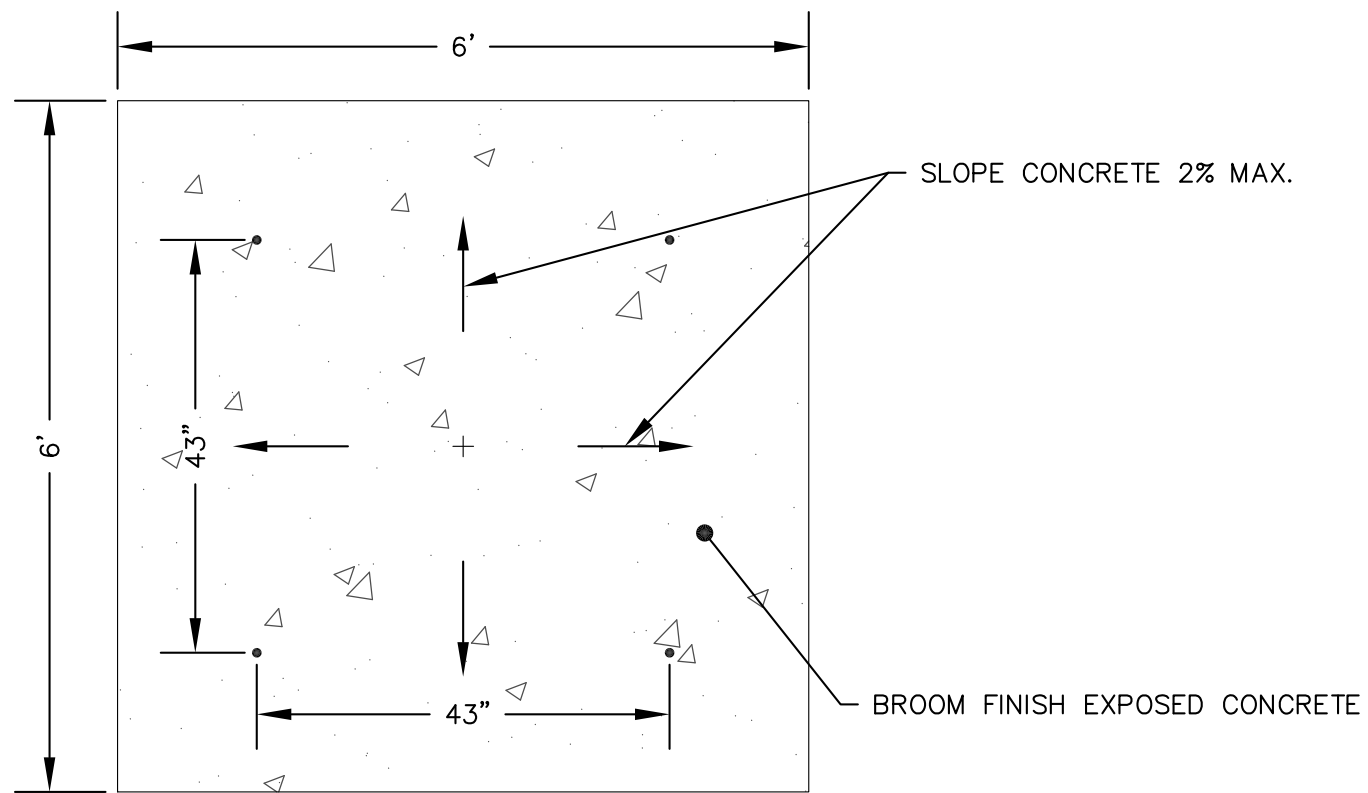
2) *Misc – G Materials Not Otherwise Listed, 15% Markup => What does this line item cover? Is this for rebar, pedestrian light spread footings, or change in integral color for concrete?*

– Per Addenda # 1 this item has been removed.

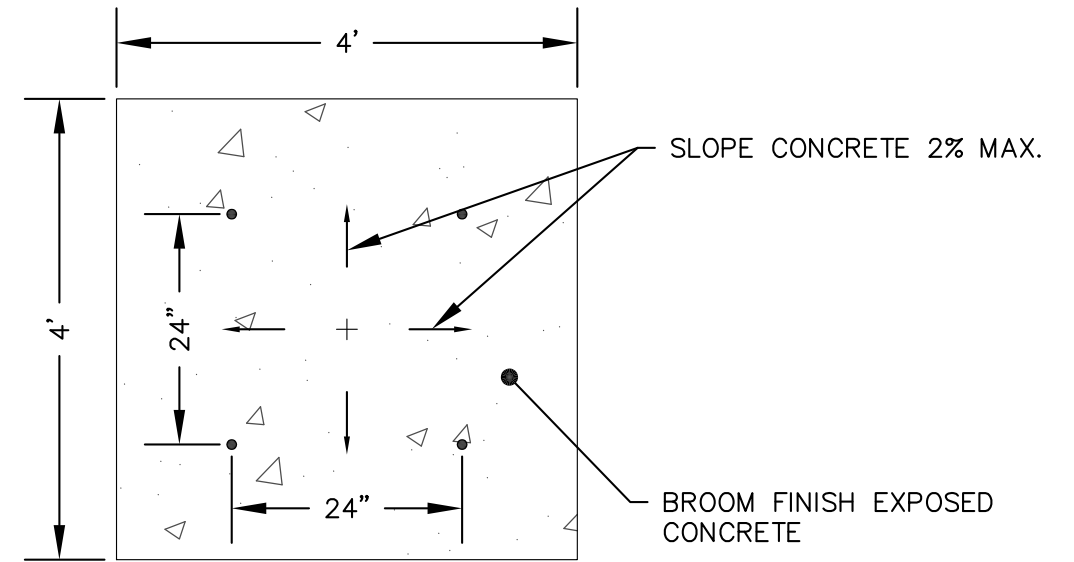
3) *Typical Handrail Section & Typical Stairs Section contradict which type of handrail to use. Typical Stair Sections calls for a “Nominal 1.5” Galvanized Steel Handrail”. Typical Handrail calls for “2” Dia. Tube Steel primered and painted black. Which handrail is going to be used?*

– The discrepancies have been revised on the attached revised Appendix C. Typical handrail will be a double rail 1.5” diameter tube steel primed and painted either RAL9005 (Jet Black) or RAL6005 (Moss Green).

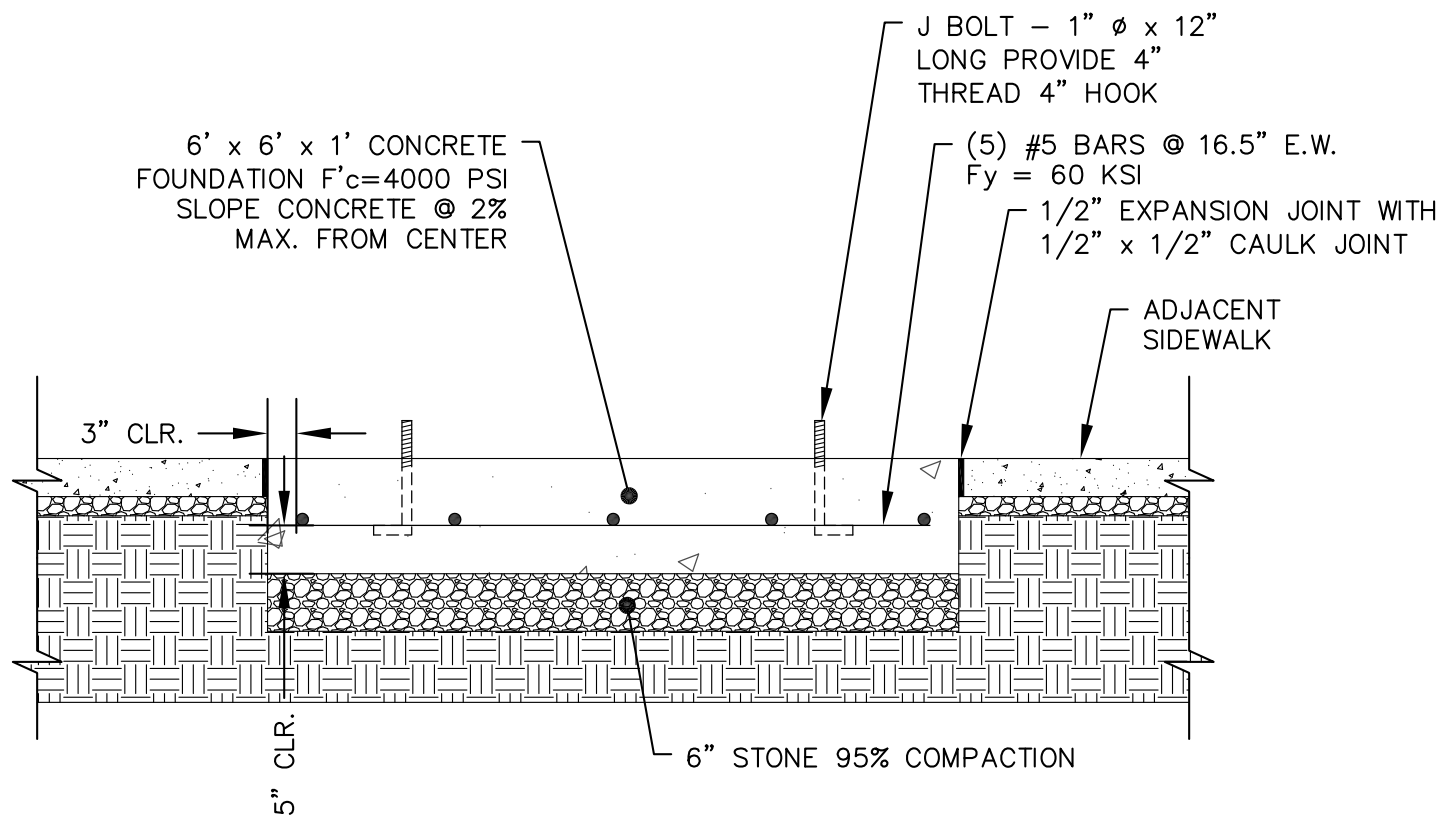
Appendix C



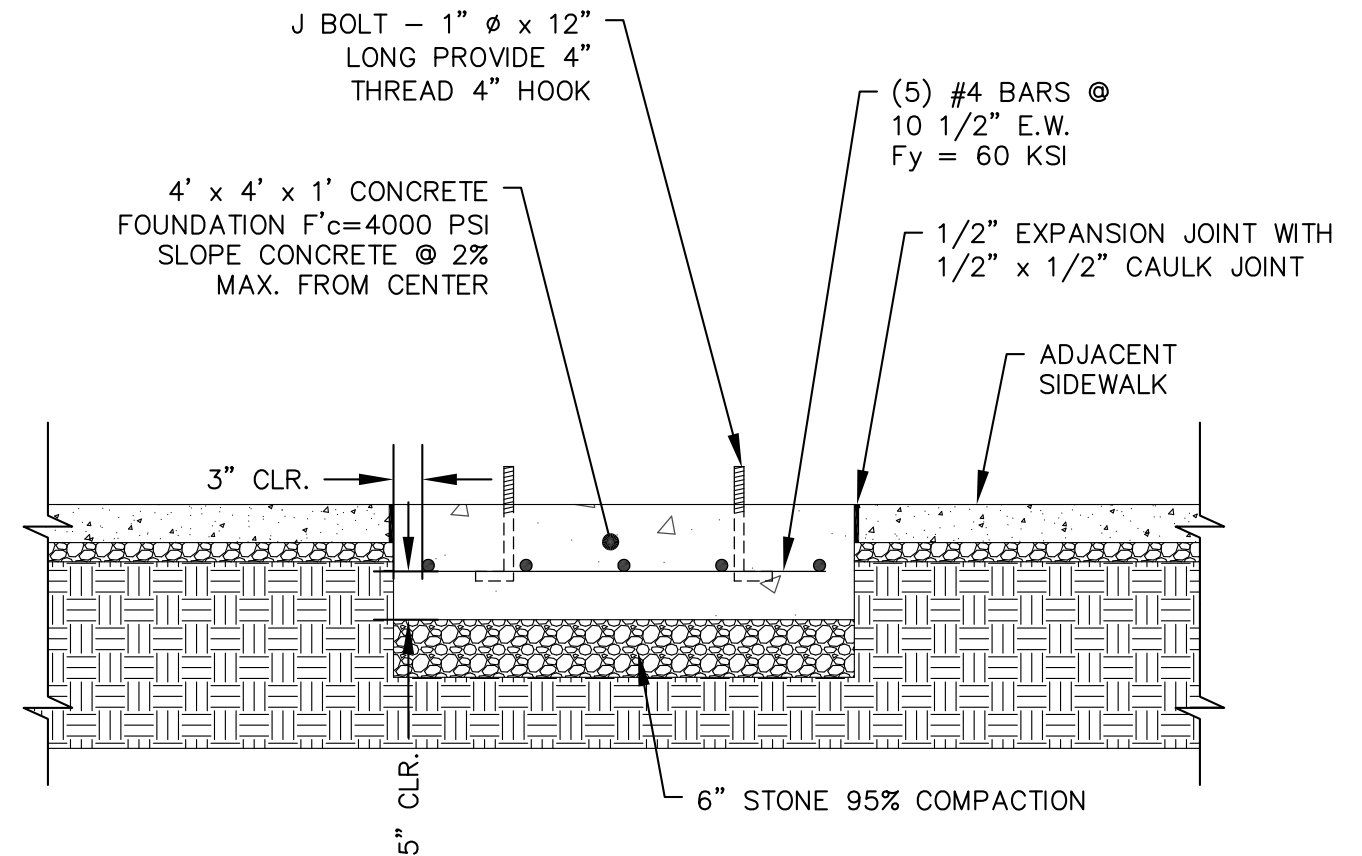
43" x 43" BOLT PATTERN
N.T.S.



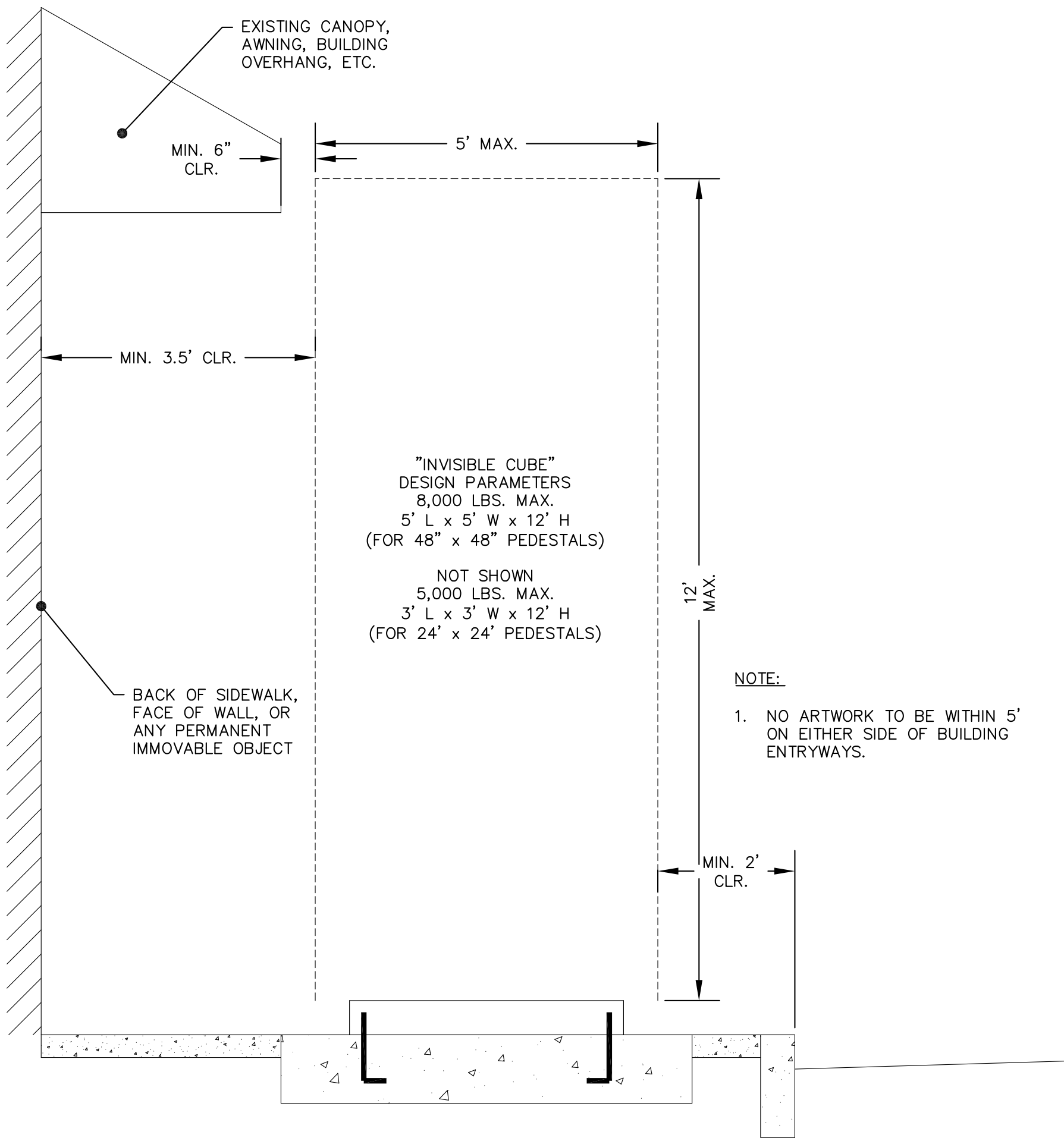
24" x 24" BOLT PATTERN
N.T.S.



FOUNDATION TYPICAL SECTION
(FOR 43" x 43" BOLT PATTERN FOUNDATION)
N.T.S.

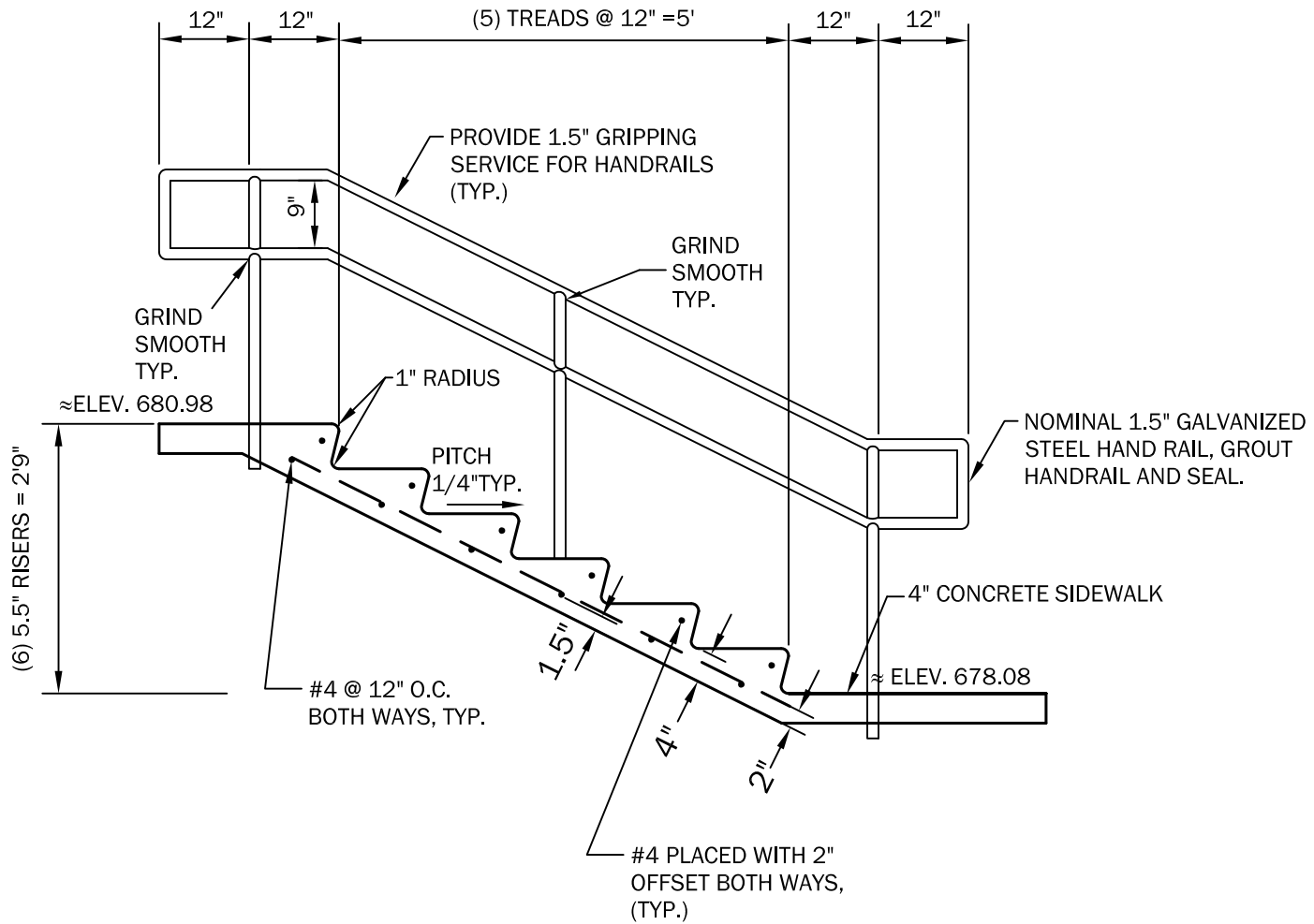


FOUNDATION TYPICAL SECTION
(FOR 24" x 24" BOLT PATTERN FOUNDATION)
N.T.S.



ARTWORK PARAMETERS

N.T.S.



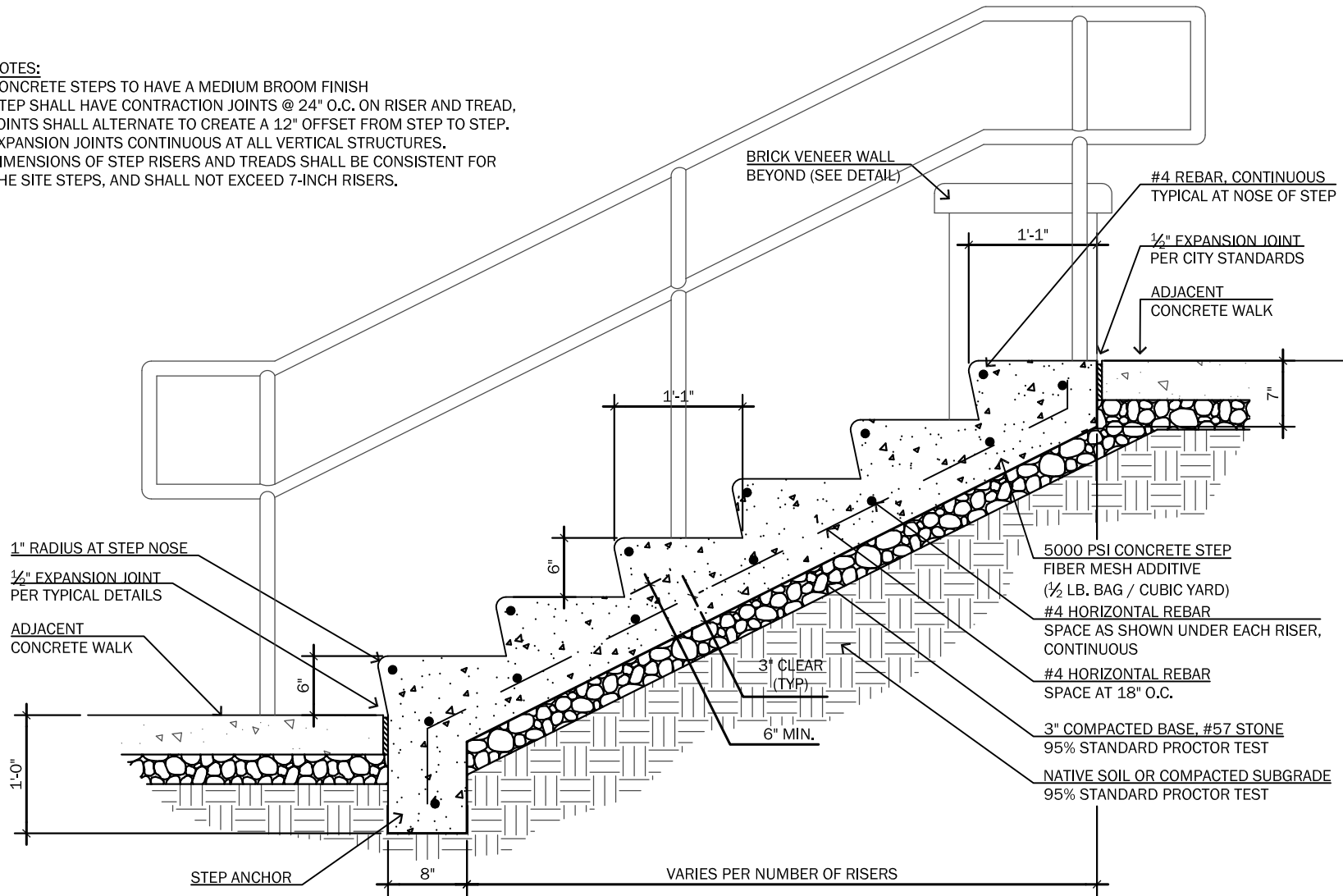
STAIRS TYPICAL SECTION

(SEE PLAN FOR LOCATION)

NTS

NOTES:

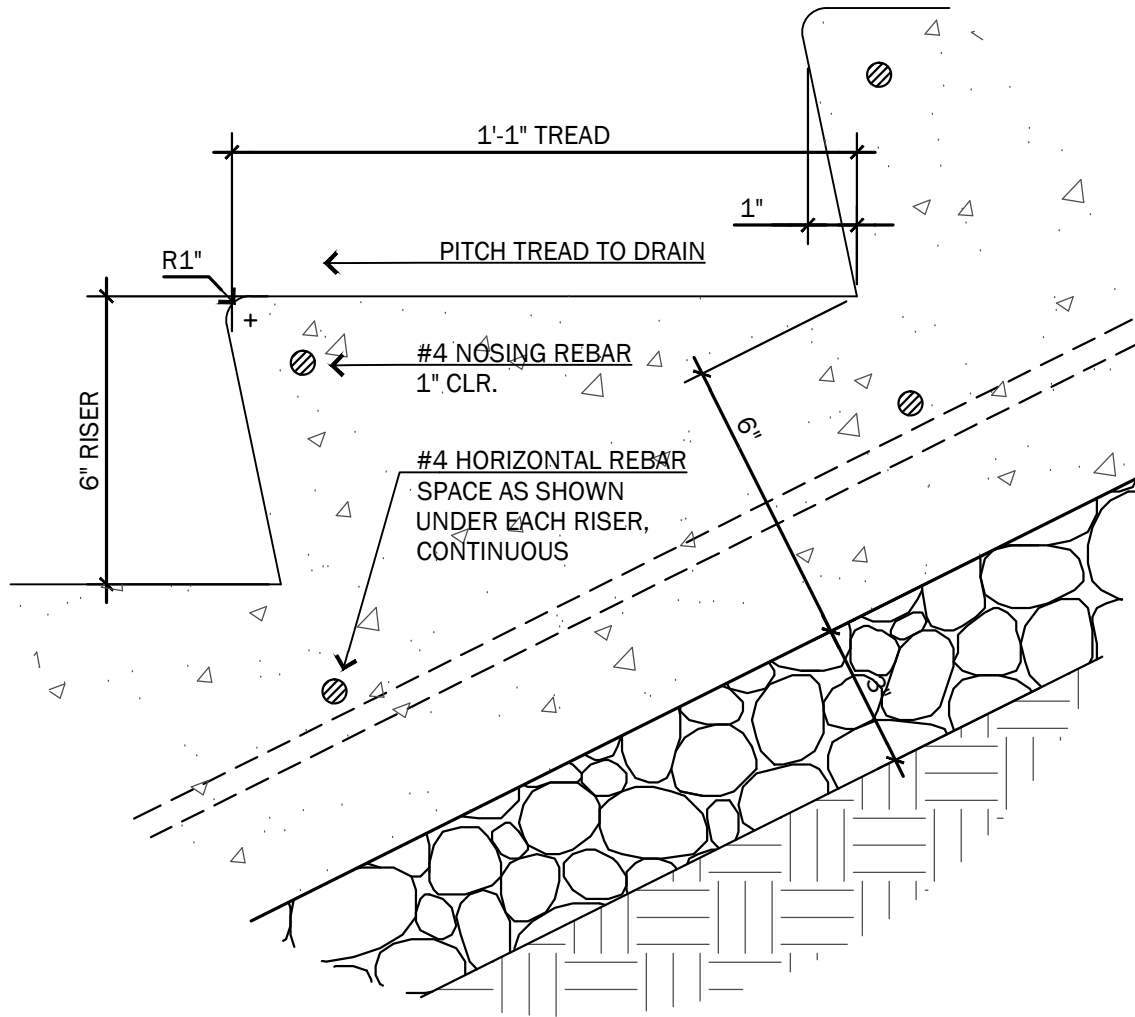
1. CONCRETE STEPS TO HAVE A MEDIUM BROOM FINISH
2. STEP SHALL HAVE CONTRACTION JOINTS @ 24" O.C. ON RISER AND TREAD, JOINTS SHALL ALTERNATE TO CREATE A 12" OFFSET FROM STEP TO STEP.
3. EXPANSION JOINTS CONTINUOUS AT ALL VERTICAL STRUCTURES.
4. DIMENSIONS OF STEP RISERS AND TREADS SHALL BE CONSISTENT FOR THE SITE STEPS, AND SHALL NOT EXCEED 7-INCH RISERS.



CONCRETE STEPS

3/4" = 1'-0"

DETAIL SHOWN FOR BIDDING REFERENCE ONLY. FINAL INSTALLATION DETAILS MAY VARY BUT WILL BE SIMILAR TO INFORMATION ILLUSTRATED HEREIN.



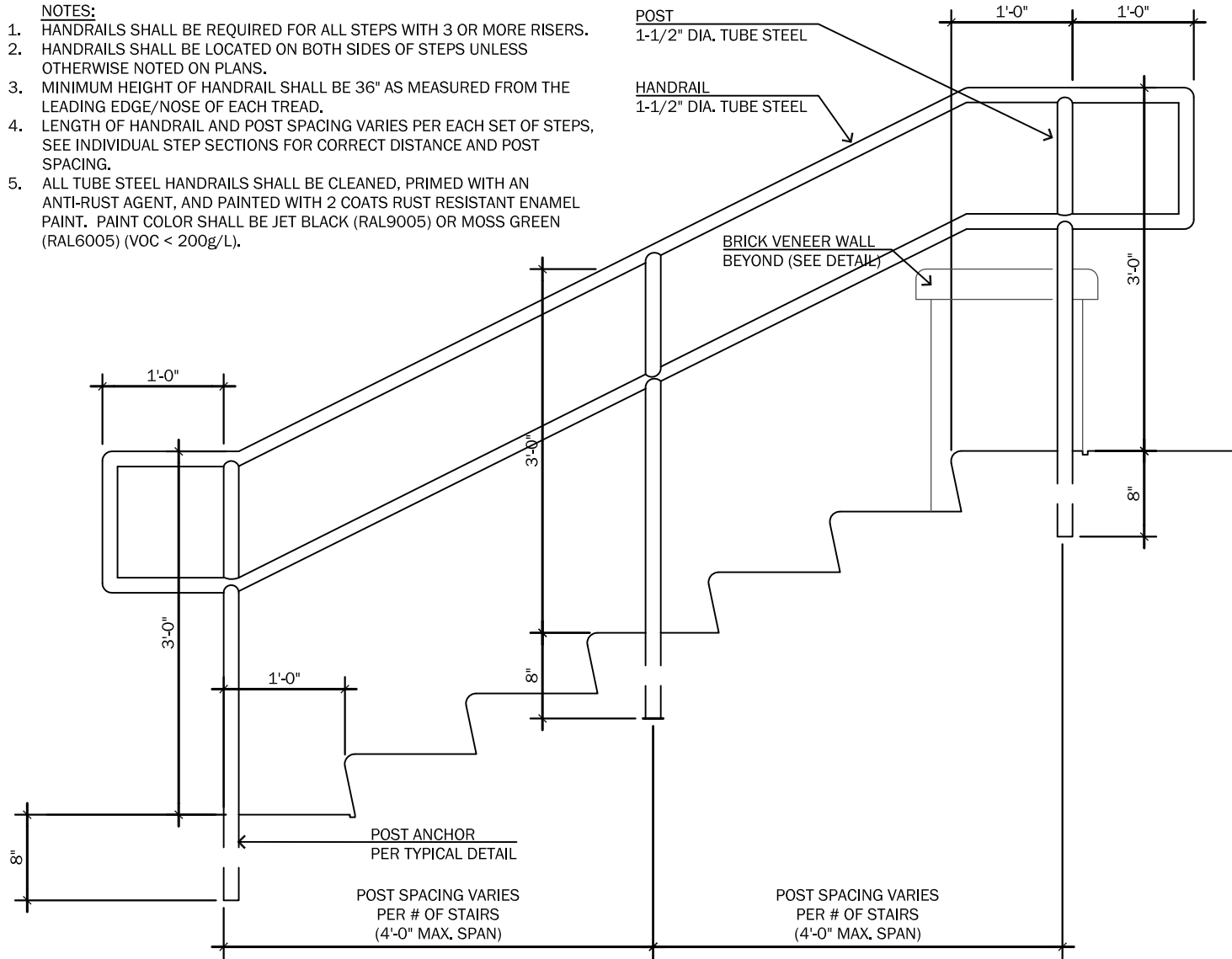
TYPICAL STEP DETAIL

3" = 1'-0"

DETAIL SHOWN FOR BIDDING REFERENCE ONLY.
FINAL INSTALLATION DETAILS MAY VARY BUT WILL
BE SIMILAR TO INFORMATION ILLUSTRATED HEREIN.

NOTES:

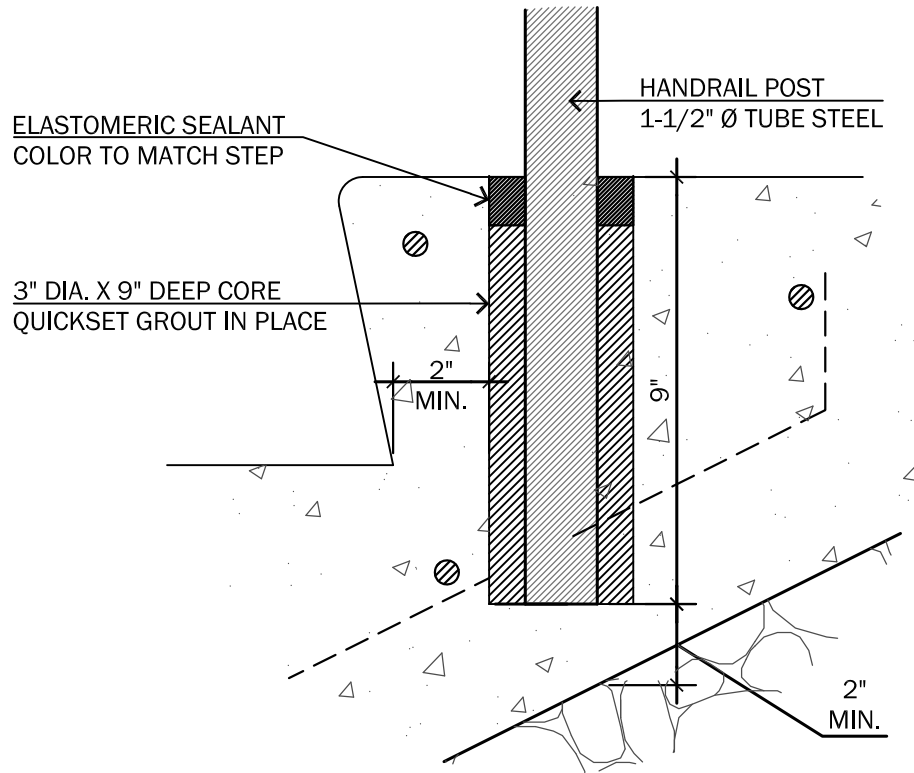
1. HANDRAILS SHALL BE REQUIRED FOR ALL STEPS WITH 3 OR MORE RISERS.
2. HANDRAILS SHALL BE LOCATED ON BOTH SIDES OF STEPS UNLESS OTHERWISE NOTED ON PLANS.
3. MINIMUM HEIGHT OF HANDRAIL SHALL BE 36" AS MEASURED FROM THE LEADING EDGE/NOSE OF EACH TREAD.
4. LENGTH OF HANDRAIL AND POST SPACING VARIES PER EACH SET OF STEPS, SEE INDIVIDUAL STEP SECTIONS FOR CORRECT DISTANCE AND POST SPACING.
5. ALL TUBE STEEL HANDRAILS SHALL BE CLEANED, PRIMED WITH AN ANTI-RUST AGENT, AND PAINTED WITH 2 COATS RUST RESISTANT ENAMEL PAINT. PAINT COLOR SHALL BE JET BLACK (RAL9005) OR MOSS GREEN (RAL6005) (VOC < 200g/L).



TYPICAL HANDRAIL

3/4" = 1'-0"

DETAIL SHOWN FOR BIDDING REFERENCE ONLY.
FINAL INSTALLATION DETAILS MAY VARY BUT WILL
BE SIMILAR TO INFORMATION ILLUSTRATED HEREIN.



HANDRAIL MOUNTING DETAIL

3" = 1'-0"

DETAIL SHOWN FOR BIDDING REFERENCE ONLY.
FINAL INSTALLATION DETAILS MAY VARY BUT WILL
BE SIMILAR TO INFORMATION ILLUSTRATED HEREIN.