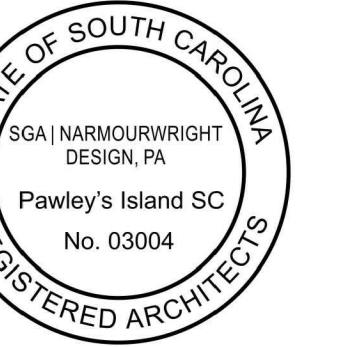


THESE DOCUMENTS PROVIDED BY SGA/NARMOURWRIGHT DESIGN ARE SUBJECT TO THE ARCHITECTURAL WORKS COPYRIGHT PROTECTION ACT AS INTELLECTUAL PROPERTY. SIMILAR PROTECTION IS ALSO APPLICABLE TO ELECTRONIC INFORMATION IN ANY FORM. THE USE OF THESE DOCUMENTS OF THE ELECTRONIC INFORMATION THAT PROVIDED HEREIN IS PROHIBITED UNLESS OTHERWISE PROVIDED IN WRITING BY ANEL COMPENSATION TO THE ARCHITECT.



WAVERLY PARK
AT
WACCAMAW ELEMENTARY SCHOOL
1364 WAVERLY RD.
PAWLEY'S ISLAND, SC 29585

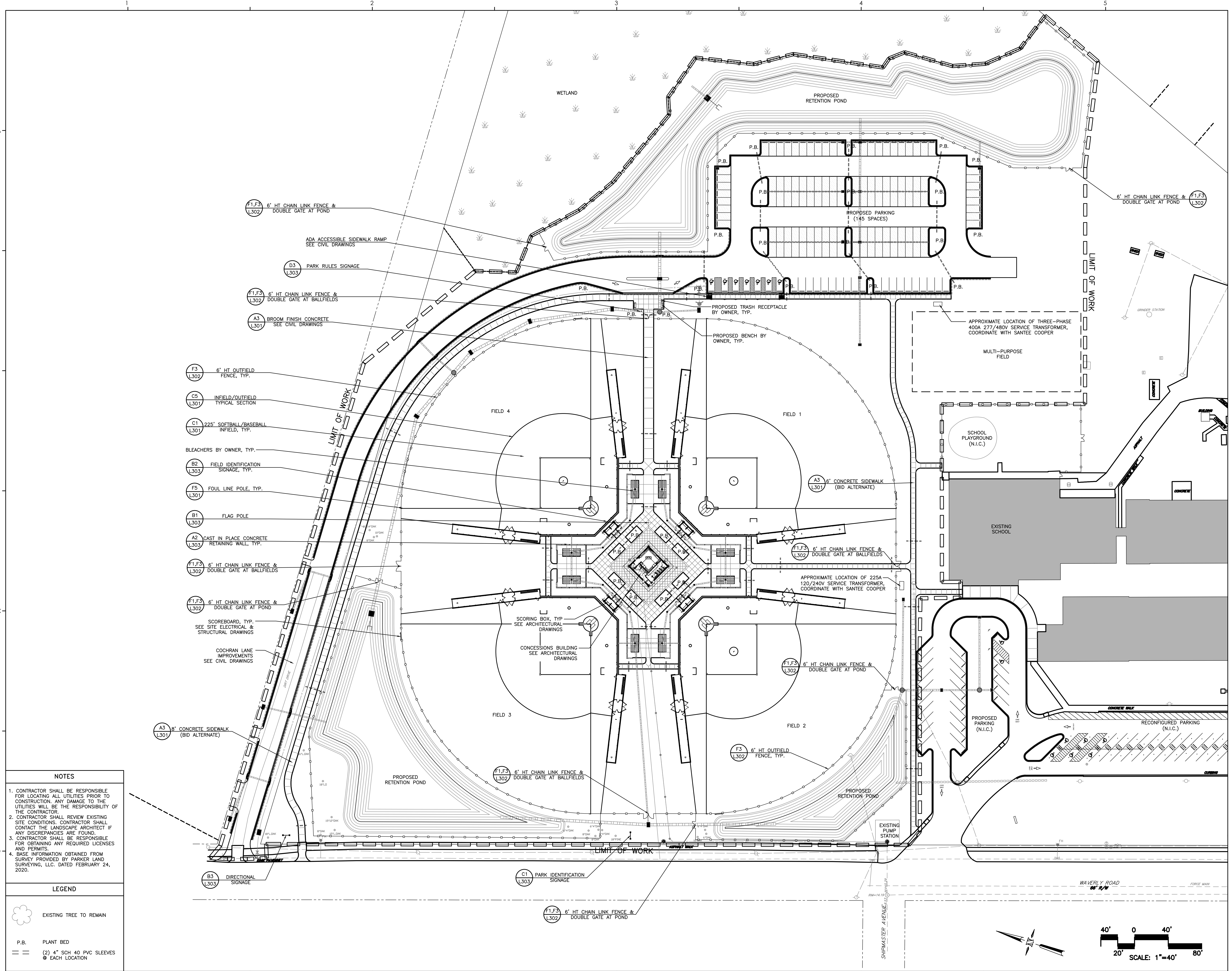
PROJECT NUMBER:
19-004-04
ISSUE DATE:
4/13/2021
DRAWN BY: PW / JW
CHECKED BY: PW / JW / MR

Bid Set

Revision Schedule		
#	Description	Date
1	OSF Comments	5/11/2021

KEY PLAN

L101



- NOTES**
- CONTRACTOR SHALL BE RESPONSIBLE FOR LOCATING ALL UTILITIES PRIOR TO CONSTRUCTION. ANY DAMAGE TO THE UTILITIES WILL BE THE RESPONSIBILITY OF THE CONTRACTOR.
 - CONTRACTOR SHALL REVIEW EXISTING SITE CONDITIONS. CONTRACTOR SHALL CONTACT THE LANDSCAPE ARCHITECT IF ANY DISCREPANCIES ARE FOUND.
 - CONTRACTOR SHALL BE RESPONSIBLE FOR OBTAINING ANY REQUIRED LICENSES AND PERMITS.
 - BASE INFORMATION OBTAINED FROM SURVEY PROVIDED BY PARKER LAND SURVEYING, LLC, DATED FEBRUARY 24, 2020.

- LEGEND**
- EXISTING TREE TO REMAIN
 - P.B. PLANT BED
 - == (2) 4" SCH 40 PVC SLEEVES EACH LOCATION

- F1.F3 6' HT CHAIN LINK FENCE & DOUBLE GATE AT POND
- ADA ACCESSIBLE SIDEWALK RAMP SEE CIVIL DRAWINGS
- D3 PARK RULES SIGNAGE
- F1.F3 6' HT CHAIN LINK FENCE & DOUBLE GATE AT BALLFIELDS
- A3 BROOM FINISH CONCRETE SEE CIVIL DRAWINGS
- F3 6' HT OUTFIELD FENCE, TYP.
- C5 INFIELD/OUTFIELD TYPICAL SECTION
- C1 225' SOFTBALL/BASEBALL INFIELD, TYP.
- BLEACHERS BY OWNER, TYP.
- B2 FIELD IDENTIFICATION SIGNAGE, TYP.
- F5 FOUL LINE POLE, TYP.
- B1 FLAG POLE
- A2 CAST IN PLACE CONCRETE RETAINING WALL, TYP.
- F1.F3 6' HT CHAIN LINK FENCE & DOUBLE GATE AT BALLFIELDS
- F1.F3 6' HT CHAIN LINK FENCE & DOUBLE GATE AT POND
- SCOREBOARD, TYP. SEE SITE ELECTRICAL & STRUCTURAL DRAWINGS
- COCHRAN LANE IMPROVEMENTS SEE CIVIL DRAWINGS
- A3 6' CONCRETE SIDEWALK (BID ALTERNATE)
- B3 DIRECTIONAL SIGNAGE
- C1 PARK IDENTIFICATION SIGNAGE
- F1.F3 6' HT CHAIN LINK FENCE & DOUBLE GATE AT POND

Pole	x-loc	y-loc	height	Elite N	Elite M	Elite W	Elite EW	Total	kw
A1	30	-62	60ft	1	1	2		4	3.9
A2	-62	30	60ft	1	1	2		4	3.9
B1	230	-10	70ft	1	6		1	8	7.7
B2	-10	230	70ft	1	6		1	8	7.7
Total				4	14	4	2	24	23.2

225' Baseball
119 points (25 infield, 94 outfield) at z=3, sp 20ft by 20ft
HORIZONTAL FOOTCANDLES

	Outfield	Infield
Average	33	55
Maximum	39	63
Minimum	26	49
AvgMin	1.29	1.13
MaxMin	1.50	1.29
Coef Var	0.10	0.07
UnifGrad	1.28	1.20

Elite EW
GeoSport Elite LED 1000W
Light Loss Factor = 0.950
Watts per luminaire = 970
Number luminaires used = 2
kw these luminaires = 1.9

Elite W
GeoSport Elite LED 1000W
Light Loss Factor = 0.950
Watts per luminaire = 976
Number luminaires used = 4
kw these luminaires = 3.9

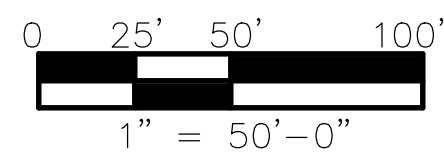
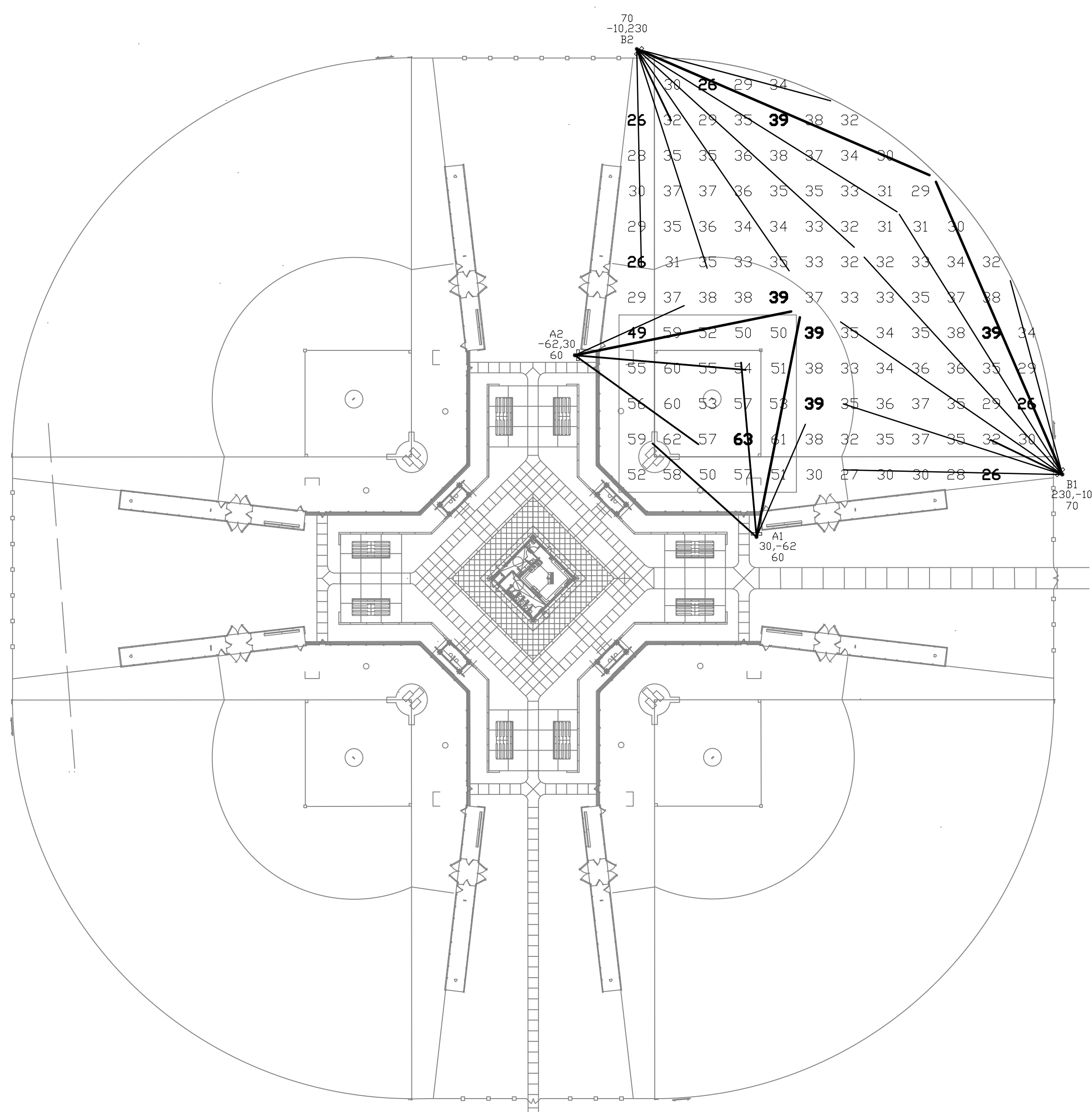
Elite M
GeoSport Elite LED 1000W
Light Loss Factor = 0.950
Watts per luminaire = 965
Number luminaires used = 14
kw these luminaires = 13.5

Elite N
GeoSport Elite LED 1000W
Light Loss Factor = 0.950
Watts per luminaire = 957
Number luminaires used = 4
kw these luminaires = 3.8

ELECTRICAL NOTES

1. LIGHTING OF FIELD MUST MEET MINIMUM OF INDICATED PHOTOMETRICS FOR EACH FIELD. PHOTOMETRICS ARE BASED ON GEOSPOT LED LIGHTING FIXTURES. SIMILAR LIGHTING FIXTURES MANUFACTURED BY HUBBLE OR MUSCO MEETING EQUAL PHOTOMETRICS WOULD BE CONSIDERED AS EQUALS.

TYPICAL OF ALL 4 FIELDS



WAVERLY PARK
AT
WACCAMAW ELEMENTARY SCHOOL
1364 WAVERLY RD.
PAWLEYS ISLAND, SC 29585

PROJECT NUMBER:
2028
ISSUE DATE:
5/10/2021
DRAWN BY: HARVEY
CHECKED BY: DEDEN

Permit Drawings

Revision Schedule		
#	Description	Date
1	EMERGENCY LIGHTING	5/24/2021



PHOTOMETRIC
PLAN

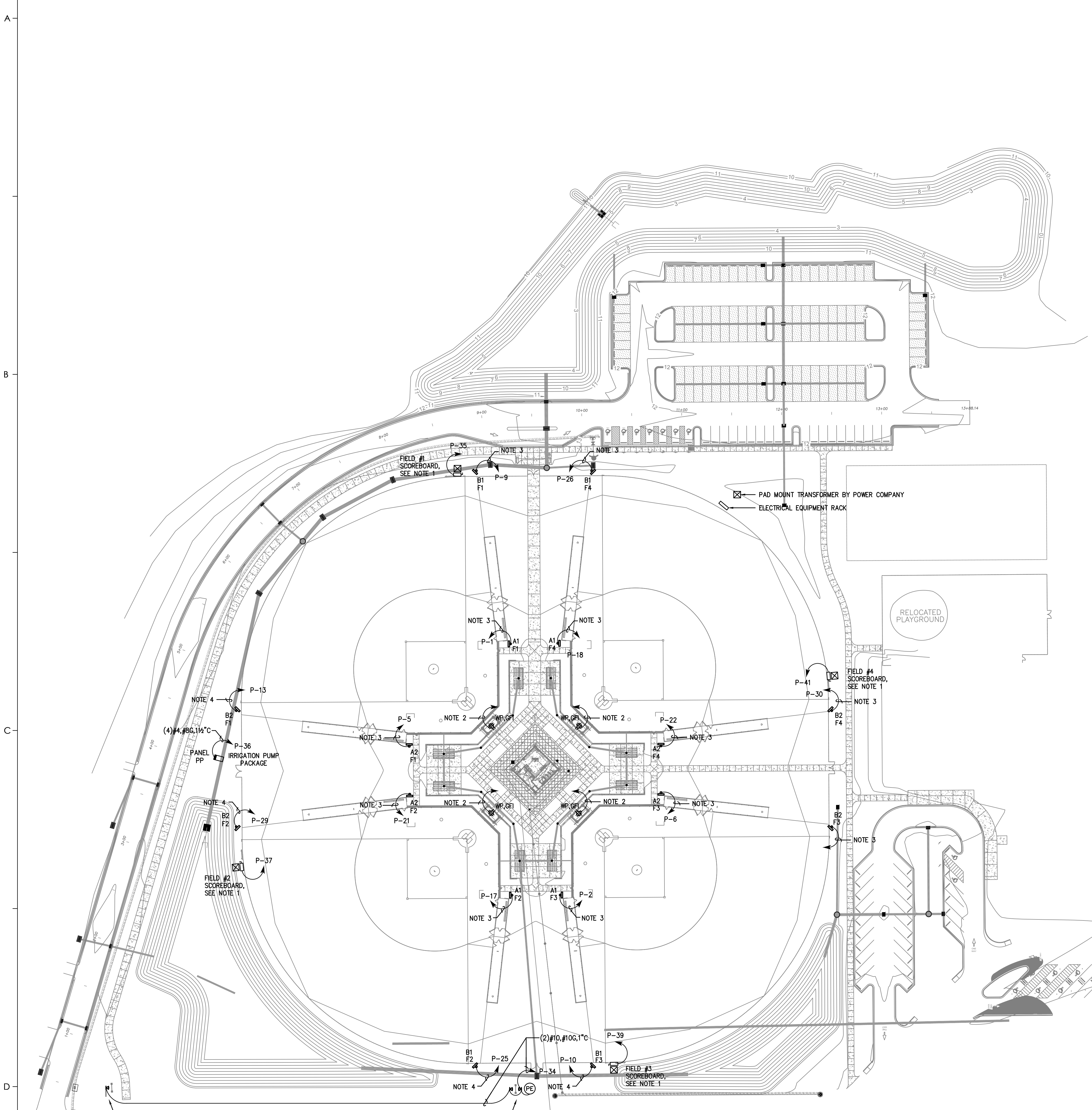
ES000

ELECTRICAL NOTES

1. PROVIDE 2 KVA, NEMA 4X, 277 - 120 VOLT TRANSFORMER MOUNTED ON BACK OF SCOREBOARD. PROVIDE NEMA 3R, SINGLE POLE, 30 AMP DISCONNECT SWITCH AHEAD OF TRANSFORMER AND HOMERUN (2) #10 GROUND IN 1 1/2" CONDUIT TO PANEL P. CONNECT SCOREBOARD PER MANUFACTURER'S RECOMMENDATIONS. DATA TO SCOREBOARD IS WIRELESS.
2. PROVIDE GFI, WEATHERPROOF CONVENIENCE QUAD RECEPTACLE AT BACKSTOP FOR SCOREBOARD CONTROLLER. HOMERUN WITH (2) #10, #10 GROUND IN 1" CONDUIT TO SINGLE POLE 20 AMP CIRCUIT BREAKER IN 120/240 VOLT PANEL LOCATED IN CONCESSION BUILDING. EXACT LOCATION TO BE DETERMINED BY ARCHITECT.
3. HOMERUN WITH (2) #10, #10 GROUND IN 1 1/2" CONDUIT.
4. HOMERUN WITH (2) #8, #10 GROUND IN 1 1/2" CONDUIT.
5. PROVIDE SCOREBOARD. SCOREBOARD SHALL BE BY ELECTRO-MECH SCOREBOARD COMPANY MODEL LX1050 (6'X3') WITH BUILT-IN ID PANEL & SL-400 WIRELESS CONTROL SYSTEM. MOUNT SCOREBOARD PER MANUFACTURER'S RECOMMENDATIONS. SALES REP CONTACT IS JOHN BRAECKELAERE, (800)-445-7846
6. PROVIDE CONTROL WIRING FROM CONTROL PANEL TO 4 SWITCHES (ONE FOR EACH FIELD) TO BE LOCATED IN CONCESSION BUILDING. PROVIDE LABEL FOR EACH SWITCH.
7. FIELD LIGHTS SHALL BE MOUNTED ON 70' (POLE A) AND 80' (POLE B) WOOD POLES SET 10' IN GROUND. PROVIDE ALTERNATE BID FOR CONCRETE POLES.

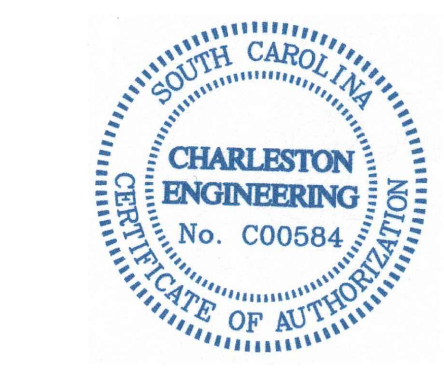
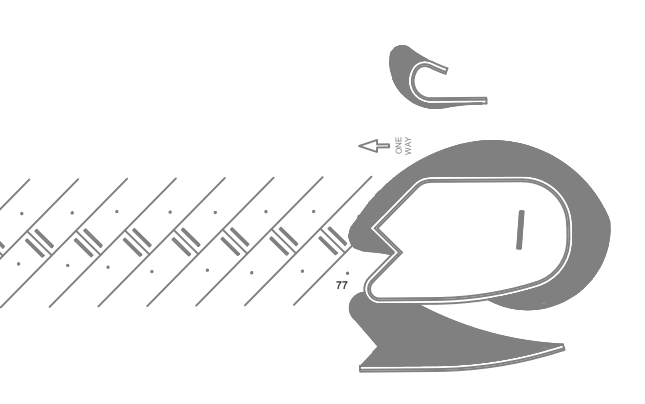
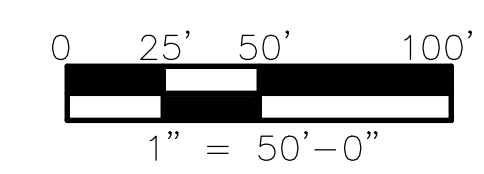
EMERGENCY LIGHTING FOR BLEACHERS

1. PROVIDE A FLOODLIGHT EQUAL TO ORACLE LIGHTING MODEL OFL-302-LED ON EACH OF THE EIGHT TYPE A LIGHTING POLES. MOUNT FLOODLIGHTS AT 20' AFG AND AIM AT BLEACHERS.
2. CONNECT ALL EIGHT FLOODLIGHTS TOGETHER WITH (2) #10, #10 GROUND IN 1" CONDUIT. HOMERUN CONDUIT TO PANEL P VIA EMERGENCY LIGHTING INVERTER MOUNTED NEXT TO PANEL. CONNECT INVERTER TO CIRCUIT P-42.
3. INVERTER SHALL BE EQUAL TO IOTA MODEL ISC 1000 277IN 277OUT. MOUNT IN NEMA 4 ENCLOSURE WITH FAN VENTILATION.
4. EMERGENCY FLOOD LIGHT WILL REMAIN OFF AT ALL TIMES EXCEPT FOR THE LOSE OF POWER AT PANEL P.



PROVIDE (1) GROUND MOUNTED FLOODLIGHT TO LIGHT SIGN. LIGHT SHALL BE EQUAL TO WILLIAMS MODEL VFI L35/740 HF SR BLK PC DIM UNV.

PROVIDE (2) GROUND MOUNTED FLOODLIGHTS TO LIGHT SIGN.



WAVERLY PARK
AT
WACCAMAW ELEMENTARY SCHOOL
1364 WAVERLY RD.
PAWLEYS ISLAND, SC 29585

PROJECT NUMBER:
2028
ISSUE DATE:
5/10/2021
DRAWN BY: HARVEY
CHECKED BY: DEDEN

Permit Drawings

Revision Schedule		
#	Description	Date
1	EMERGENCY LIGHTING	5/24/2021

ELECTRICAL SITE PLAN

ES100

ELECTRICAL SPECIFICATIONS

PART 1 - GENERAL

- 1.01 SCOPE:
 A. FURNISH AND INSTALL A COMPLETELY WIRED AND OPERATIONAL ELECTRICAL SYSTEM AS SHOWN ON THE DRAWINGS AND SPECIFIED HEREIN, INCLUDING BUT NOT LIMITED TO THESE MAJOR ITEMS:
 1. LIGHTING FIXTURES AS INDICATED AND SPECIFIED ON PLANS.
 2. ELECTRICAL PANELS, CONTROLS, SERVICE, DISCONNECTS, CONDUIT, WIRING, ETC., FOR ALL OUTLETS AND EQUIPMENT.
- 1.02 CODES, REGULATIONS AND STANDARDS:
 A. THE INSTALLATION SHALL COMPLY WITH APPLICABLE LOCAL AND STATE CODES AND ORDINANCES, INCLUDING THE REGULATIONS OF THE FOLLOWING:
 1. AMERICANS WITH DISABILITIES ACT -- 1990 W/ 2008 AMENDMENT
 2. INTERNATIONAL BUILDING CODE -- 2018
 3. NATIONAL ELECTRIC CODE -- 2017
 4. LOCAL BUILDING CODES AND ORDINANCES
 B. THE FOLLOWING INDUSTRY STANDARDS, SPECIFICATIONS ARE ALSO MINIMUM REQUIREMENTS:
 1. THE NATIONAL ELECTRICAL MANUFACTURER'S ASSOCIATION STANDARDS (NEMA).
 2. THE MANUFACTURER'S RECOMMENDATION.
 3. UNDERWRITER LABORATORIES INCORPORATED STANDARDS (UL).
 4. AMERICAN NATIONAL STANDARDS INSTITUTE (ANSI).
- 1.03 PERMITS
 A. OBTAIN AND PAY FOR ALL REQUIRED PERMITS AND INSPECTION FEES.
- 1.04 INSPECTION OF SITE:
 A. PRIOR TO SUBMITTING A BID, VISIT THE SITE OF THE PROPOSED CONSTRUCTION TO BECOME THOROUGHLY ACQUAINTED WITH EXISTING UTILITIES, WORKING CONDITIONS, ETC. ALLOWANCE WILL NOT BE MADE FOR NONCOMPLIANCE WITH THIS CONDITION AFTER BIDDING.
- 1.05 CLEAN-UP:
 A. KEEP THE PREMISES FREE FROM ACCUMULATION OF WASTE MATERIAL, OR RUBBISH CAUSED BY EMPLOYEES OR WORK UNDER THIS DIVISION OF THE SPECIFICATION. AT THE COMPLETION OF THE WORK, REMOVE ALL SURPLUS MATERIALS, TOOLS, ETC., AND LEAVE THE PREMISES "BROOM-CLEAN". REMOVE ALL TEMPORARY WIRING UPON PROJECT COMPLETION.
- 1.06 DRAWINGS:
 THE DRAWINGS INDICATE THE GENERAL ARRANGEMENT AND LOCATIONS OF THE ELECTRICAL WORK. DATA PRESENTED ON THESE DRAWINGS ARE AS ACCURATE AS PLANNING CAN DETERMINE, BUT FIELD VERIFICATION OF ALL DIMENSIONS, LOCATIONS, LEVELS, ETC., TO SUIT FIELD CONDITIONS IS REQUIRED. REVIEW ALL ARCHITECTURAL, STRUCTURAL AND MECHANICAL DRAWINGS AND ADJUST ALL WORK TO MEET THE REQUIREMENTS OF CONDITIONS SHOWN. THE ARCHITECTURAL DRAWINGS SHALL TAKE PRECEDENCE OVER ALL OTHER DRAWINGS. DISCREPANCIES BETWEEN DIFFERENT PLANS, OR BETWEEN DRAWINGS AND SPECIFICATIONS, OR REGULATIONS AND CODES GOVERNING THE INSTALLATION SHALL BE BROUGHT TO THE ATTENTION OF THE ARCHITECT IN WRITING BEFORE THE DATE OF BID OPENING. IF DISCREPANCIES ARE NOT REPORTED, ID THE GREATER QUANTITY OR BETTER QUALITY, AND APPROPRIATE ADJUSTMENTS WILL BE MADE AFTER CONTRACT AWARD.
- 1.07 COORDINATION WITH OTHER TRADES:
 A. COOPERATE WITH OTHER TRADES SO THAT INSTALLATION OF ELECTRICAL OUTLETS AND EQUIPMENT WILL BE PROPERLY COORDINATED. CHECK CONDUIT, FIXTURE, AND OTHER EQUIPMENT LOCATIONS WITH THE OTHER TRADES TO AVOID CONFLICT.
- 1.08 UTILITY COMPANIES
 A. COORDINATE ALL INCOMING SERVICES WITH RESPECTIVE UTILITY COMPANIES. INCLUDE ALL CHARGES IN BID.

PART 2 - PRODUCTS AND EXECUTION

- 2.01 MATERIALS:
 A. ALL MATERIAL SHALL BE NEW AND OF QUALITY AS SPECIFIED ON THE PLANS OR SPECIFICATIONS AND MUST CARRY THE UNDERWRITER'S LABORATORIES APPROVAL COVERING THE PURPOSE FOR WHICH THEY ARE USED, IN ADDITION TO MEETING ALL REQUIREMENTS OF THE CURRENT APPLICABLE CODES AND REGULATIONS.
- 2.02 CONDUIT:
 A. USE SCHEDULE 80 PVC WHERE EXPOSED AND TO 24" BELOW GRADE. CONDUIT BELOW 24" MAY BE SCHEDULE 40 PVC.
 B. ALL EMPTY CONDUIT SYSTEMS SHALL HAVE 200 LB. TEST PULL CORD TO FACILITATE INSTALLATION OF FUTURE WIRE..
- 2.03 CONDUCTORS:
 A. UNLESS OTHERWISE SPECIFIED, ALL WIRE SHALL BE TYPE THW, THWN OR XHHW COPPER. THE WIRES SHALL BE COLOR CODED INDICATING PHASE & VOLTAGE. UNLESS OTHERWISE REQUIRED BY LOCAL ORDINANCES, GROUND WIRES SHALL BE GREEN, NEUTRAL WIRES WRES SHALL BE WHITE. CONDUCTORS SHALL BE #12 AWG, UNLESS OTHERWISE INDICATED.
 B. DO NOT INSTALL CONDUCTORS UNTIL CONDUIT SYSTEM IS COMPLETE. USE MINERALAC #100 OR EQUIVALENT AS A LUBRICANT TO FACILITATE THE INSTALLATION OF THE CONDUCTORS IN THE CONDUIT SYSTEM.
 C. ALL BRANCH CIRCUITS SHALL CONTAIN A GROUND CONDUCTOR. ALL 3 PH BRANCH CIRCUITS SHALL CONSIST OF 3 PHASE CONDUCTORS AND GROUND CONDUCTOR. WHEN TWO OR THREE SINGLE PHASE CIRCUITS ARE SHOWN TO BE COMBINED, THESE CIRCUITS MAY SHARE A SINGLE NEUTRAL.
- 2.04 WIRING DEVICES:
 A. 20A, 125 VOLT, IVORY COLOR. SPECIFICATION GRADE.
- 2.05 PANELBOARDS:
 A. PROVIDE BRANCH CIRCUIT PANELBOARD(S) AS SHOWN ON DRAWINGS AND AS SPECIFIED HEREIN. PROVIDE TIN-PLATED ALUMINUM BUS BARS. MULTIPLE POLE BREAKERS SHALL HAVE HANDLE TIES SO ALL POLES ACT SIMULTANEOUSLY. MAIN BREAKER SHALL BE CENTER MOUNTED. EQUIPMENT RATINGS SHALL EXCEED AVAILABLE FAULT CURRENT (PANELS MAY BE SERIES FAULT RATED). PROVIDE TYPED CIRCUIT DIRECTORY UNDER PLASTIC COVER IN EACH PANEL DOOR. CIRCUIT BREAKERS SHALL BE SWITCH RATED BOLT-ON TYPE. BALANCE FINAL LOADS WITHIN 10% OF ALL THREE PHASES. MOUNT PANELS 6'-6" TO TOP.
- 2.06 LIGHTING FIXTURES:
 A. PROVIDE LIGHTING FIXTURES, COORDINATE PROCUREMENT OF THESE FIXTURES WITH OWNER'S REPRESENTATIVE IN A TIMELY MANNER TO MEET JOB SCHEDULES. RECEIVE, UNCRATE, INSPECT, STORE AND PROTECT ALL MATERIAL. INSTALL AND LAMP FIXTURES AS NOTED ON DRAWINGS.
 B. SUBMIT ALL LIGHTING FIXTURES TO OWNER FOR APPROVAL.
- 2.08 LABELING
 A. PROVIDE NAMEPLATES TO IDENTIFY PANELBOARDS, DISCONNECT SWITCHES, STARTERS, AND OTHER MAJOR EQUIPMENT.
- 2.09 GUARANTEE
 A. GUARANTEE ALL MATERIAL FURNISHED AND ALL WORKMANSHIP PERFORMED FOR A PERIOD OF ONE YEAR FROM THE DATE OF FINAL ACCEPTANCE OF THE WORK. ANY DEFECTS DEVELOPING WITHIN THIS PERIOD, TRACEABLE TO MATERIAL FURNISHED AS PART OF THIS SECTION OR WORKMANSHIP PERFORMED HEREUNDER, SHALL BE CORRECTED AT NO EXPENSE TO THE OWNER.
- 2.10 CONDITIONS PRECEDENT TO FINAL ACCEPTANCE:
 A. UPON COMPLETION OF PROJECT, PREPARE AND SUBMIT ONE COMPLETE SET OF ELECTRICAL RECORD DRAWING OF "AS-BUILT" CONDITIONS SHOWING ALL WIRING AS ACTUALLY INSTALLED. PRINTS SHALL ALSO SHOW, AS INDICATED BY MARKED-UP NOTATIONS, ALL DEVIATIONS AND CHANGES OF WIRING AND CIRCUIT NUMBER FROM THE ORIGINAL CONTRACT DRAWINGS.

PANEL SCHEDULE P

277480 VOLT, 3 PHASE, 4 WIRE, 22,000 AIC, 200 A MAIN CIRCUIT BREAKER

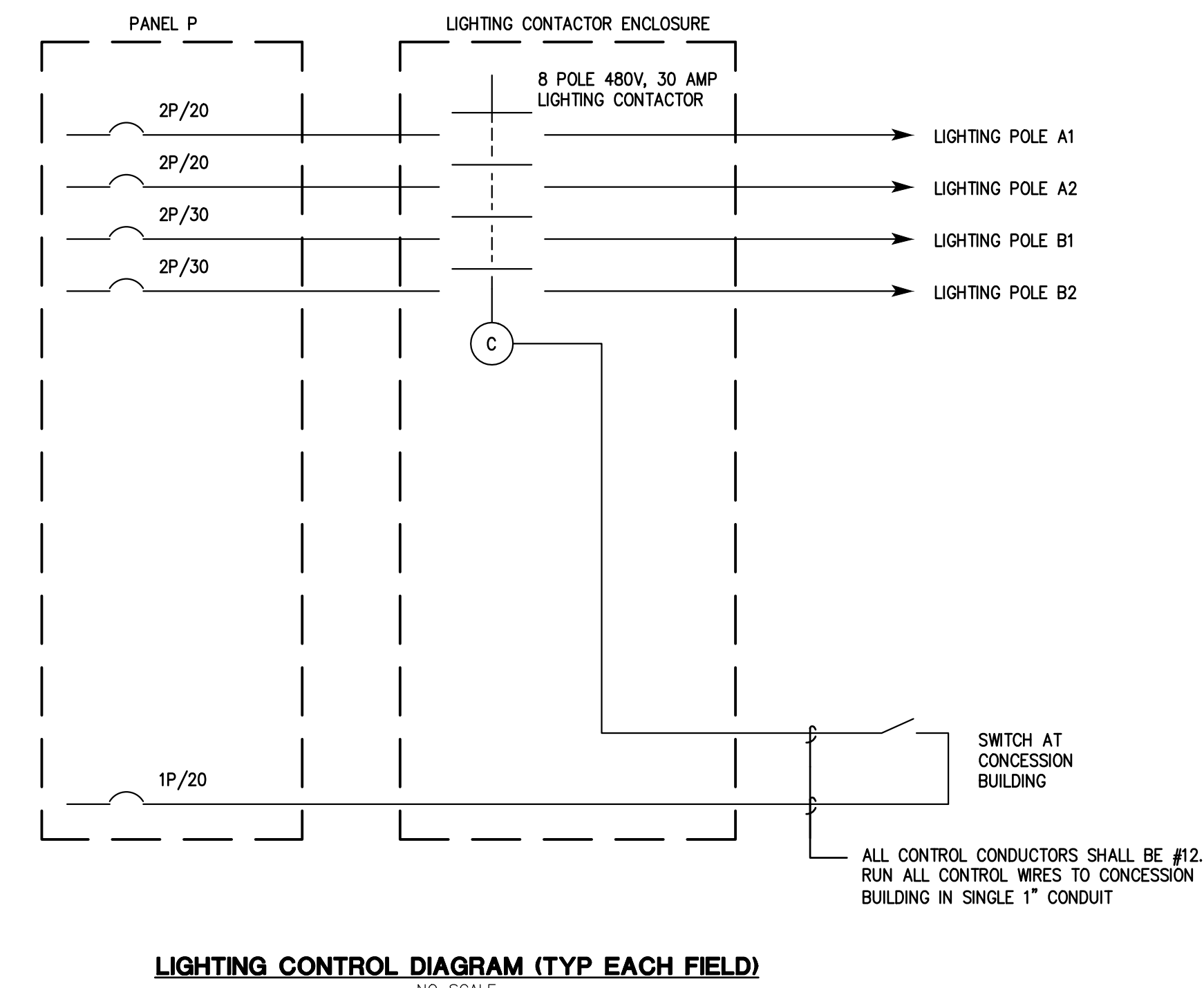
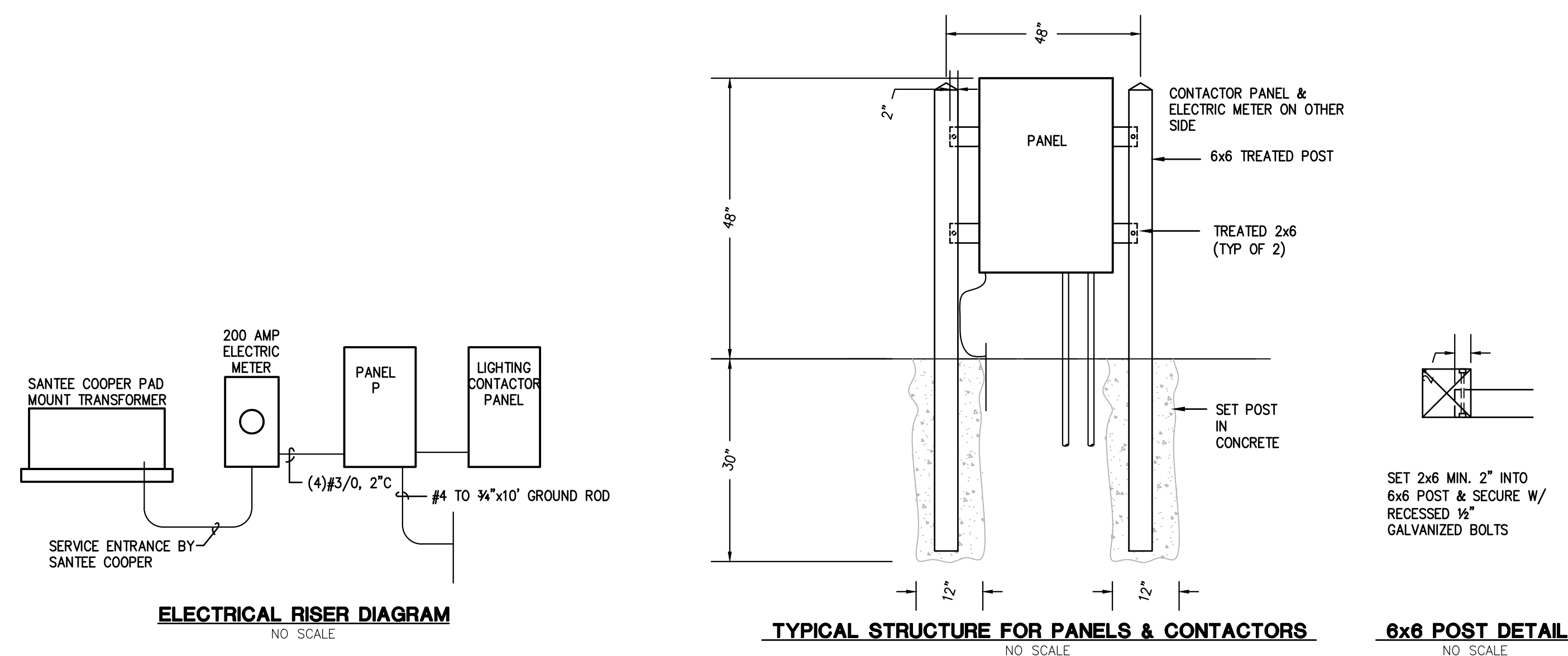
CKT	DESCRIPTION	VA	TRIP	KVA			TRIP	VA	DESCRIPTION	CKT	
				A	B	C					
1	FIELD #1 POLE A1	1950	20/2	3.90			20/2	1950	FIELD #3 POLE A1	2	
3	--	1950	--		3.90		--	1950	--	4	
5	FIELD #1 POLE A2	1950	20/2			3.90	20/2	1950	FIELD #3 POLE A2	6	
7	--	1950	--	3.90			--	1950	--	8	
9	FIELD #1 POLE B1	3850	30/2		7.70		30/2	3850	FIELD #3 POLE B1	10	
11	--	3850	--			7.70	--	3850	--	12	
13	FIELD #1 POLE B2	3850	30/2	7.70			30/2	3850	FIELD #3 POLE B2	14	
15	--	3850	--		7.70		--	3850	--	16	
17	FIELD #2 POLE A1	1950	20/2			3.90	20/2	1950	FIELD #4 POLE A1	18	
19	--	1950	--	3.90			--	1950	--	20	
21	FIELD #2 POLE A2	1950	20/2		3.90		20/2	1950	FIELD #4 POLE A2	22	
23	--	1950	--			3.90	--	1950	--	24	
25	FIELD #2 POLE B1	3850	30/2	7.70			30/2	3850	FIELD #4 POLE B1	26	
27	--	3850	--		7.70		--	3850	--	28	
29	FIELD #2 POLE B2	3850	30/2			7.70	30/2	3850	FIELD #4 POLE B2	30	
31	--	3850	--	7.70			--	3850	--	32	
33	CONTROL POWER	100	15/1		0.20		20/1	100	SIGN FLOOD LIGHT	34	
35	FIELD #1 SCORE BOARD	100	15/1			1.77		50/3	1666	PANEL PP	36
37	FIELD #2 SCORE BOARD	100	15/1		1.77				1666	--	38
39	FIELD #3 SCORE BOARD	100	15/1			1.77			1666	--	40
41	FIELD #4 SCORE BOARD	100	15/1				0.10	20/1	700	EMERGENCY LIGHTING	42
TOTAL CONNECTED KVA				98							
TOTAL CONNECTED AMPS				118							

PANEL SCHEDULE PP

277480 VOLT, 3 PHASE, 4 WIRE, 22,000 AIC, 60 A MAIN LUGS ONLY

CKT	DESCRIPTION	VA	TRIP	KVA			TRIP	VA	DESCRIPTION	CKT	
				A	B	C					
1	IRRIGATION PUMP	1950	15/3	3.90			15/3	1950	WELL PUMP	2	
3	--	1950	--		3.90		--	1950	--	4	
5	--	1950	--			3.90	--	1950	--	6	
7	SPACE								SPACE	8	
9	SPACE								SPACE	10	
11	SPACE								SPACE	12	
TOTAL CONNECTED KVA				12							
TOTAL CONNECTED AMPS				14							

VERIFY CIRCUIT BREAKERS WITH IRRIGATION PUMP SUPPLIER.

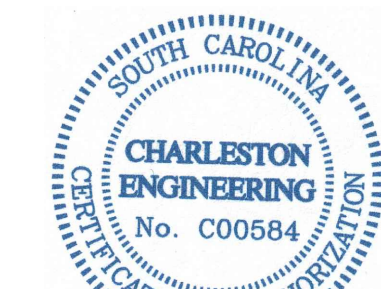


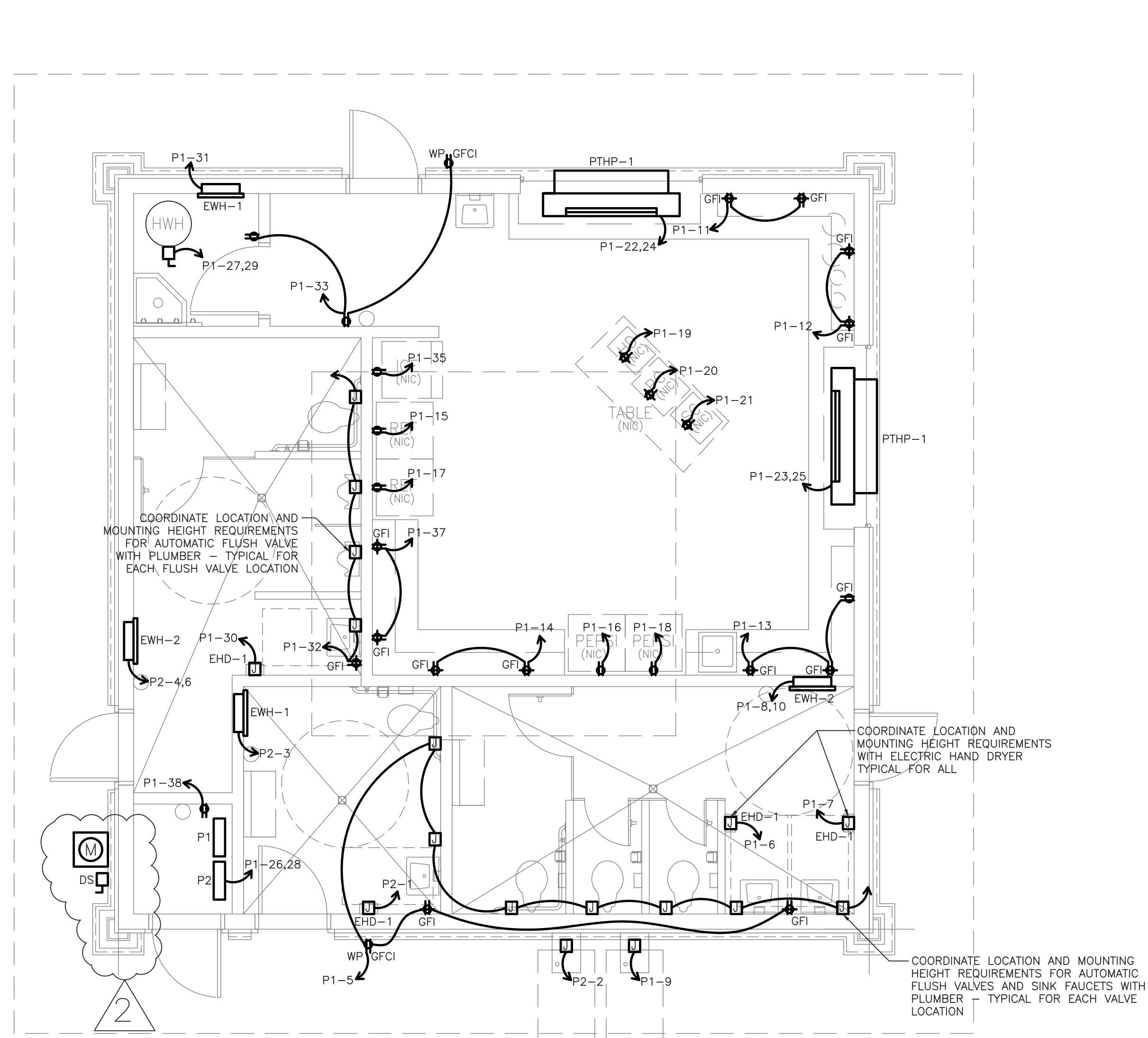
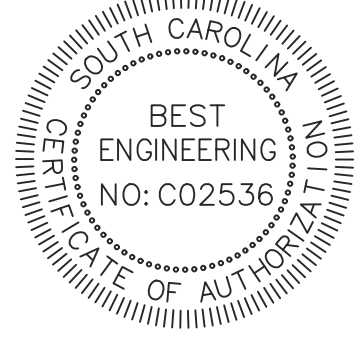
PROJECT NUMBER:
2026
ISSUE DATE:
5/10/2021
DRAWN BY: HARVEY
CHECKED BY: DEDEN

Permit Drawings

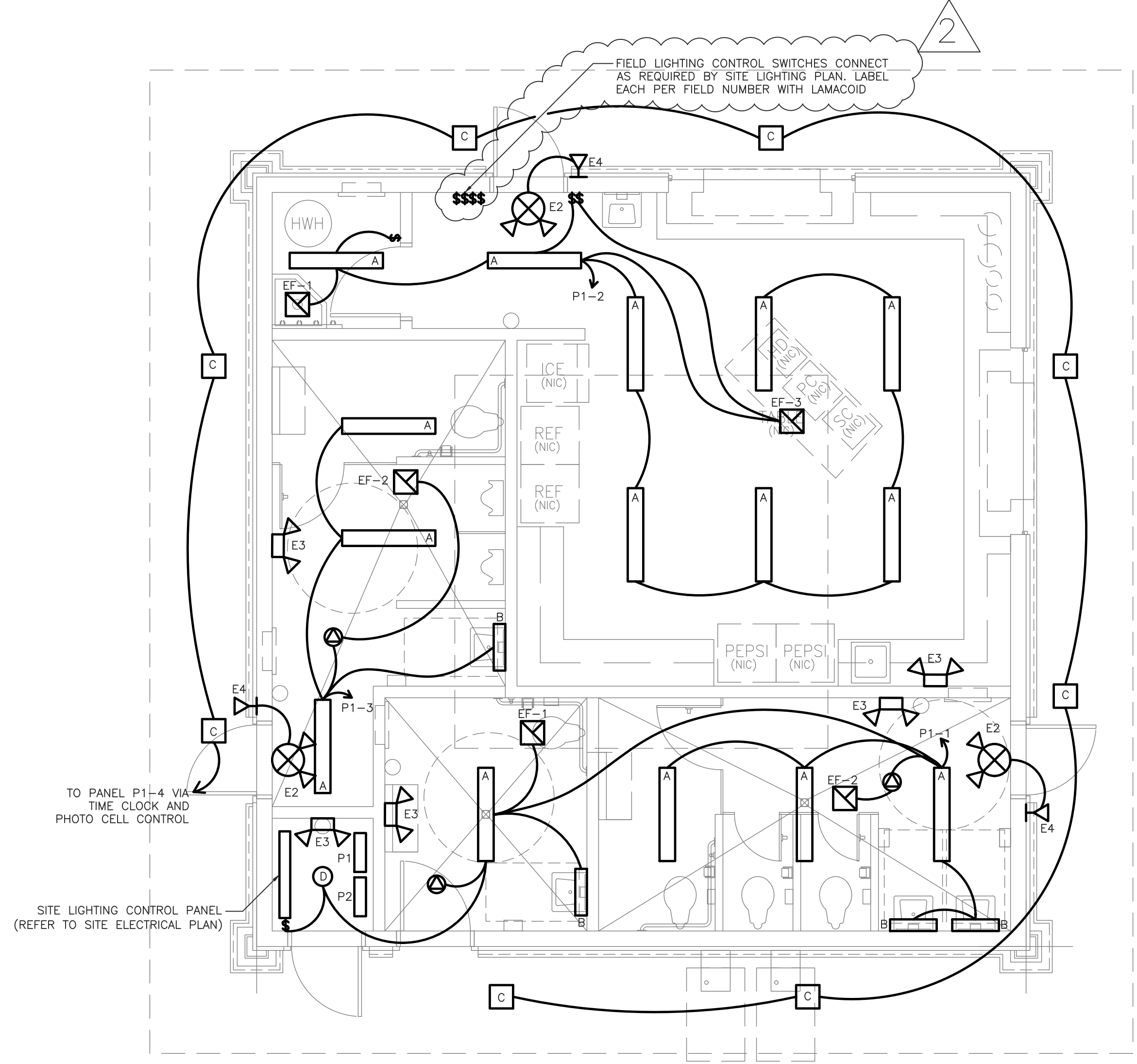
Revision Schedule		
#	Description	Date
1	EMERGENCY LIGHTING	5/24/2021

ELECTRICAL
SPECS. &
SCHEDS.





PLAN A ELECTRICAL PLAN
 SCALE: 1/4" = 1' - 0"



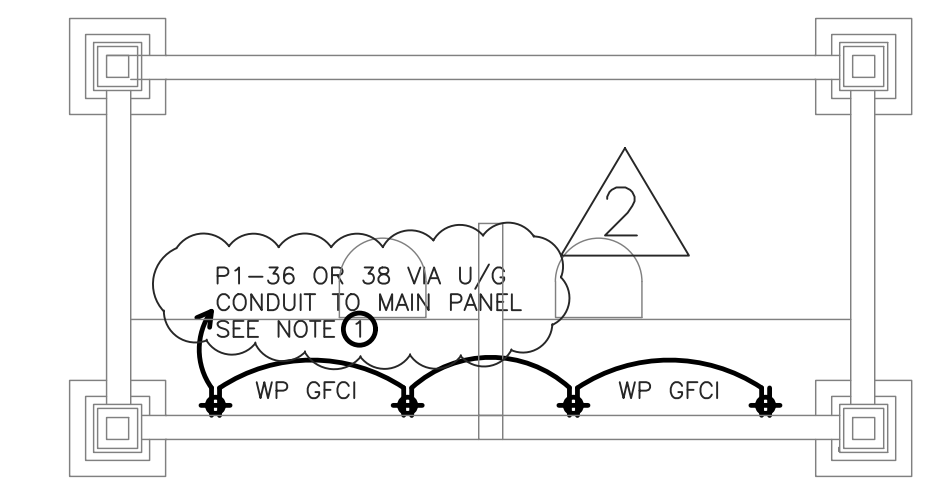
PLAN B LIGHTING PLAN
 SCALE: 1/4" = 1' - 0"

PLAN NOTES

1. VERIFY FINAL LOCATIONS AND MOUNTING DEPTH OF ALL BOXES WITH OWNER, FURNITURE SUPPLIER, GENERAL CONTRACTOR AND ARCHITECT BEFORE ROUGH IN.

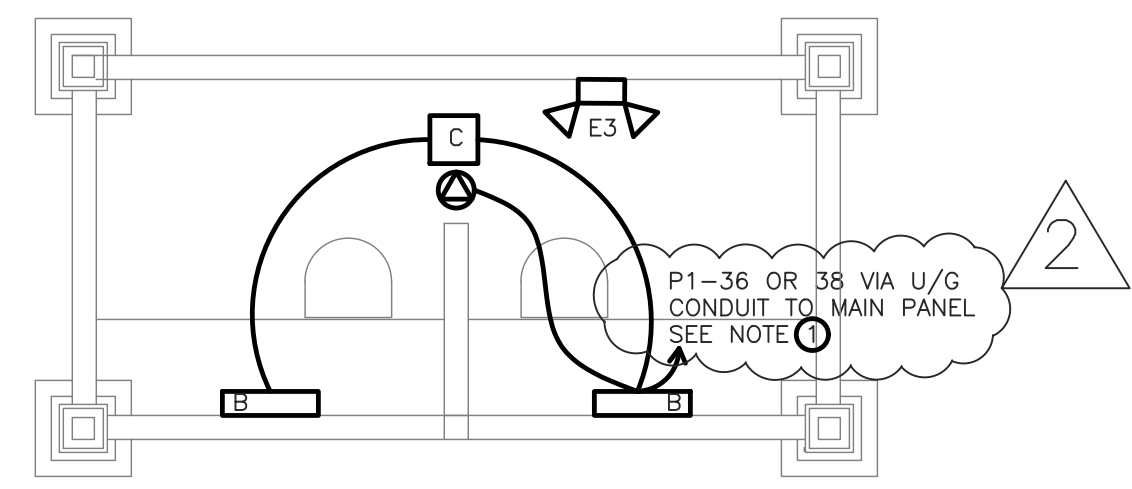
ELECTRICAL LEGEND

- ⊙ DUPLEX RECEPTACLE COMMERCIAL GRADE 15A
- ⊙ GFI WP GFI DUPLEX RECEPTACLE, COMMERCIAL GRADE 15A GFI OR WATERPROOF AS REQUIRED
- ⊕ COUNTER HEIGHT DUPLEX RECEPTACLE 44" AFF - SEE ABOVE FOR TYPE AND MODEL # GFI OR WP AS NOTED
- HOME RUN TO PANEL 2 #12 W/ GND. U.N.O. OR AS REQUIRED BY LOAD
- ⌒ BRANCH CIRCUIT WIRING 2 #12 IN 1/2" C. OR AS REQUIRED BY LOAD
- ⊠ JUNCTION BOX
- Ⓜ ELECTRICAL PANEL
- Ⓜ EXHAUST FAN AND DUCT BY MC WIRING BY EC
- Ⓜ DISCONNECT SWITCH SIZE PER EQUIPMENT REQUIREMENT
- Ⓢ SINGLE POLE WALL SWITCH COMMERCIAL GRADE 15A
- Ⓢ₃ THREE-WAY WALL SWITCH COMMERCIAL GRADE 15A
- Ⓢ₄ OCCUPANCY SENSOR WALL SWITCH COMMERCIAL GRADE 15A WATTSTOPPER DW-100
- Ⓢ₅ OCCUPANCY SENSOR CEILING MOUNTED WATTSTOPPER DT-300
- Ⓢ₆ LIGHT FIXTURES - LETTER INDICATES TYPE - SEE SCHEDULE FOR MORE INFO
- Ⓢ₇ EMERGENCY LIGHT PER LIGHT SCHEDULE
- Ⓢ₈ EXIT LIGHT - COLOR SECTION INDICATES FACE SEE SCHEDULE FOR MORE INFORMATION
- Ⓢ₉ REMOTE HEAD EMERGENCY LIGHT
- EHD ELECTRIC HAND DRYER
- EW H ELECTRIC WALL HEATER



PLAN C SCORE TOWERS ELECTRICAL PLAN
 SCALE: 1/4" = 1' - 0"

KEY NOTES:
 ○ CONNECT TWO SCORE TOWERS LIGHTING & RECEPTACLES TO CIRCUIT 36 AND TWO TO CIRCUIT 38.



PLAN D SCORE TOWERS LIGHTING PLAN
 SCALE: 1/4" = 1' - 0"

KEY NOTES:
 ○ CONNECT TWO SCORE TOWERS LIGHTING & RECEPTACLES TO CIRCUIT 36 AND TWO TO CIRCUIT 38.

WAVERLY PARK
 AT
WACCAMAW ELEMENTARY SCHOOL
 1364 WAVERLY RD.
 PAWLEYS ISLAND, SC 29585

PROJECT NUMBER:
 19-004-04
 ISSUE DATE:
 05/29/2020

DRAWN BY: BES
 CHECKED BY: BES

CONSTRUCTION DOCUMENTS

Revision Schedule		
#	Description	Date
1	OSF Comments	1.22.21
2	Coordination Comments	5.24.21

ELECTRICAL PLANS & LEGEND

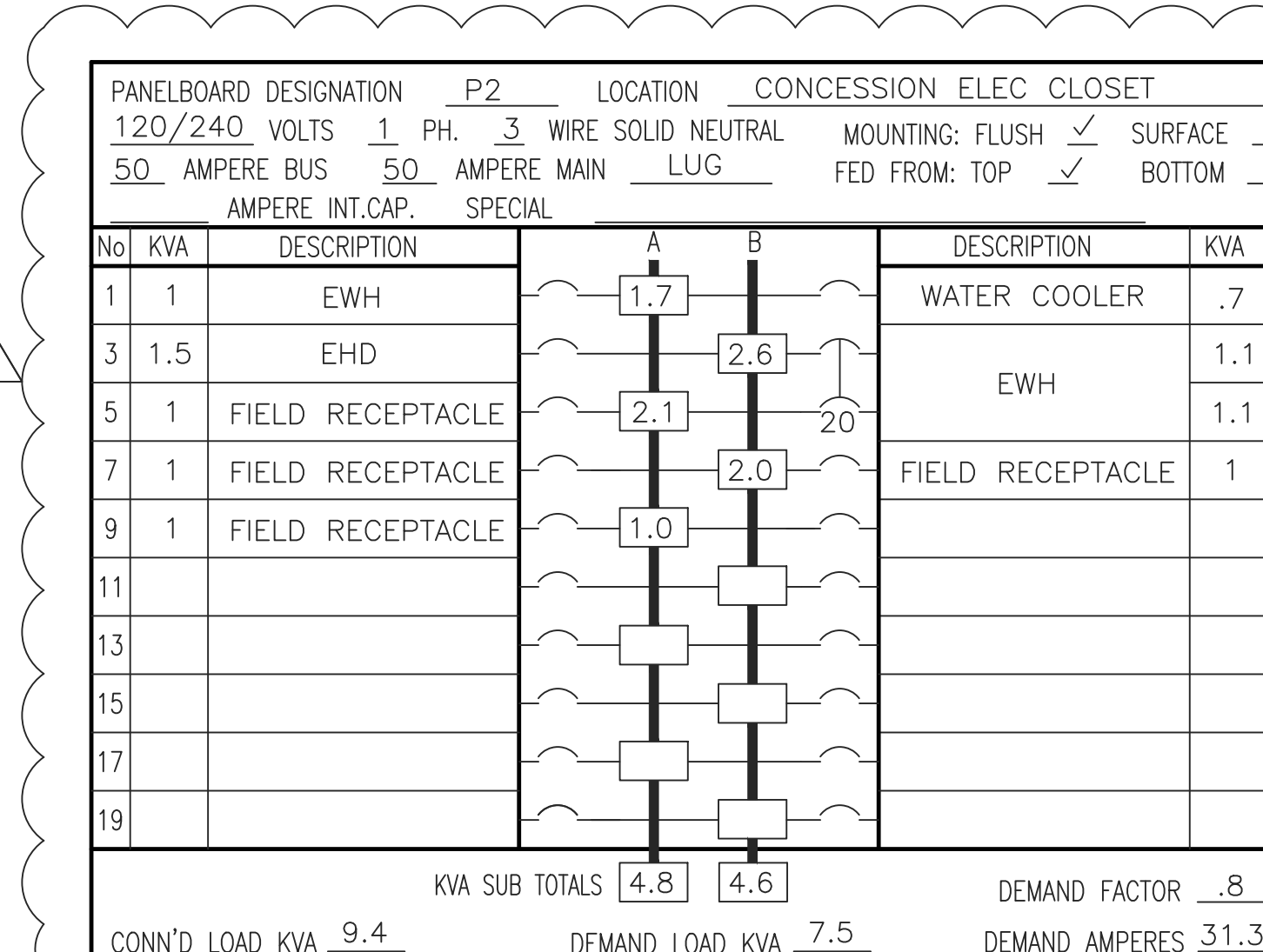
E100

GENERAL ELECTRICAL NOTES

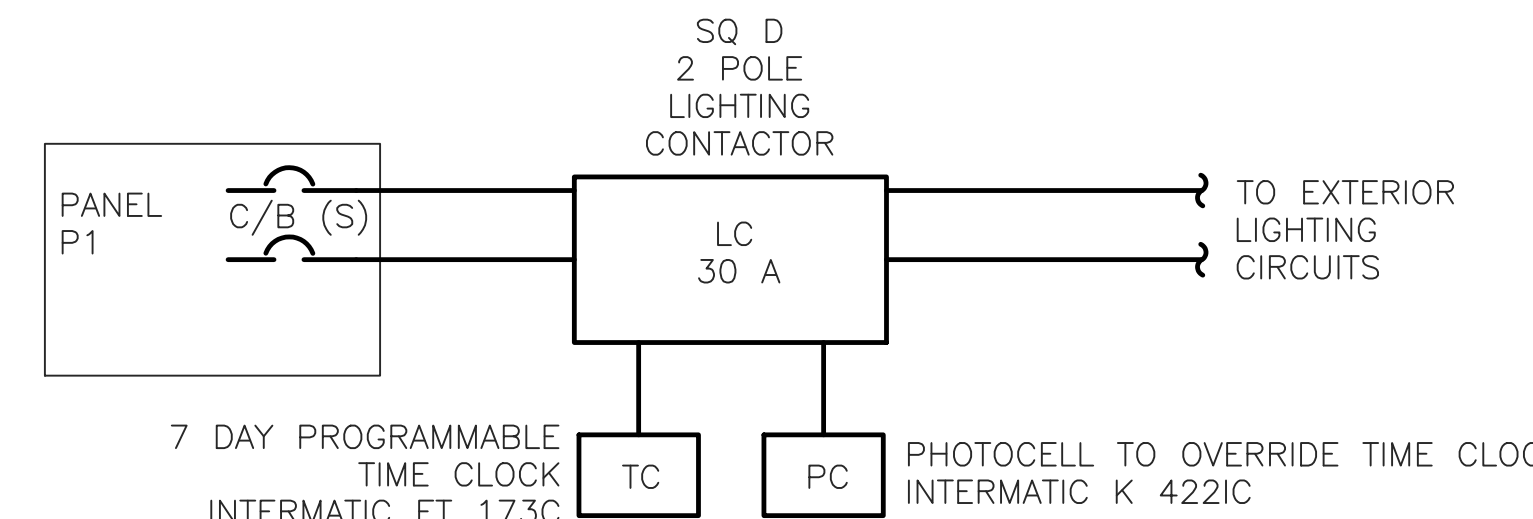
- INSTALL ALL MATERIAL AND EQUIPMENT IN A NEAT AND WORKMAN LIKE WAY. INSTALLATIONS SHALL COMPLY WITH THE CURRENT EDITION OF THE NATIONAL ELECTRIC CODE (NEC), THE NATIONAL ELECTRICAL CONTRACTORS ASSOCIATION (NECA), AND ANY OTHER LOCAL CODE HAVING JURISDICTION
- PROVIDE ALL LABOR, MATERIALS, AND SUPERVISION NECESSARY TO ACCOMPLISH THE WORK AS SHOWN AND NOTED ON THE DRAWINGS. ANY DEVIATION FROM THE DRAWINGS SHALL BE APPROVED BY THE OWNER OR ENGINEER.
- ALL WORK SHALL BE COORDINATED WITH THE OTHER TRADES.
- CONTRACTOR SHALL BE RESPONSIBLE FOR OBTAINING ALL PERMITS AND INSPECTIONS.
- THE CONTRACTOR IS RESPONSIBLE FOR THE REMOVAL OF ALL HIS TOOLS, DEBRIS, AND GENERAL CLEANUP FROM HIS WORK.
- THE ELECTRICAL CONTRACTOR SHALL DO ALL CUTTING AND PATCHING OF BUILDING MATERIALS REQUIRED FOR THE INSTALLATION HIS WORK.
- ALL RACEWAYS SHALL BE RUN CONCEALED IN CEILING, WALLS OR FLOOR SLABS
- IN GENERAL, CONDUIT RUNS BETWEEN PULL BOXES SHALL NOT EXCEED THE EQUIVALENT OF TWO 90 DEGREE BENDS AND IN NO CASE EXCEED THREE EQUIVALENT 90 DEGREE BENDS. IN LONG STRAIGHT CONDUIT RUNS LOCATE PULL BOXES AT 100 FOOT INTERVALS. INSTALL ELECTRICAL BOXES AS SHOWN ON DRAWINGS, AND AS REQUIRED FOR SPLICES, TAPS, WIRE PULLING, EQUIPMENT CONNECTIONS, AND REGULATORY REQUIREMENTS. USE CAST BOXES IN MANHOLE AND IN OUTSIDE LOCATIONS.
- ALL CONDUCTORS TO BE SOFT DRAWN COPPER WITH 600 VOLT INSULATION MINIMUM SIZE TO BE #12 AWG. WIRE SIZED #10 AWG AND SMALLER SHALL BE SOLID COPPER WITH TYPE "THWN" OR "THHN" INSULATION. CABLE SIZED #8 AND LARGER SHALL BE STRANDED COPPER WITH TYPE "THWN" OR "XHHW" INSULATION EXCEPT WHERE NOTED OTHERWISE. ALL WIRING SHALL BE INSTALLED IN PVC CONDUIT. COMPLETELY SWAB RACEWAYS BEFORE INSTALLING CONDUCTORS.
- PROVIDE CONNECTIONS TO ALL EQUIPMENT, MOTORS, ETC. FURNISHED BY OTHERS TO MAKE A COMPLETE, WORKING INSTALLATION.
- INSTALL WIRE MARKERS ON EACH CONDUCTOR IN PANELBOARD GUTTERS. PULL BOXES, OUTLET, AND JUNCTION BOXES, AND AT LOAD CONNECTIONS:
 - USE BRANCH CIRCUIT OR FEEDER NUMBER TO IDENTIFY POWER AND LIGHTING CIRCUITS.
 - USE CONTROL WIRE NUMBER AS INDICATED ON SCHEMATIC AND INTERCONNECTION DIAGRAMS TO IDENTIFY CONTROL WIRING.
- PROVIDE A TYPEWRITTEN PANEL SCHEDULE FOR EACH PANEL USED IN THIS PROJECT.
- CONNECT EMERGENCY LIGHTING TO LOCAL LIGHTING CIRCUITS, AHEAD OF ANY SWITCHES. DO NOT CONNECT TO LIGHTING CIRCUITS THAT ARE SWITCHED AT THE PANEL.
- WHEN INSTALLING RECESSED LIGHT FIXTURES IN AN INSULATED CEILING, PROVIDE A WIRE CAGE OVER THE FIXTURE TO KEEP INSTALLATION 6" OFF THE FIXTURE.
- MAKE ALL NECESSARY TESTS TO INSURE THAT THE ENTIRE INSTALLATION IS FREE FROM IMPROPER GROUNDS AND FROM SHORTED AND/OR OPEN CIRCUITS. VOLTAGE AND CURRENT TESTS SHALL BE MADE BEFORE ANY CIRCUITS ARE PLACED IN OPERATION.
- IT IS THE INTENT OF THIS SPECIFICATION FOR THE CONTRACTOR TO PROVIDE A COMPLETE AND OPERABLE ELECTRICAL SYSTEM WITHOUT ANY EXCEPTIONS. IN THE UNLIKELY CASE WHERE THESE PLANS AND SPECIFICATIONS SHOW OTHERWISE DUE TO ERRORS OR OMISSIONS THE CONTRACTOR SHALL PROVIDE A LIST OF EXCEPTIONS WITH HIS BID. OTHERWISE, EXTRAS DURING CONSTRUCTION WILL NOT BE ALLOWED IN ORDER TO PROVIDE A COMPLETE AND OPERABLE ELECTRICAL SYSTEM.

LIGHTING FIXTURE SCHEDULE

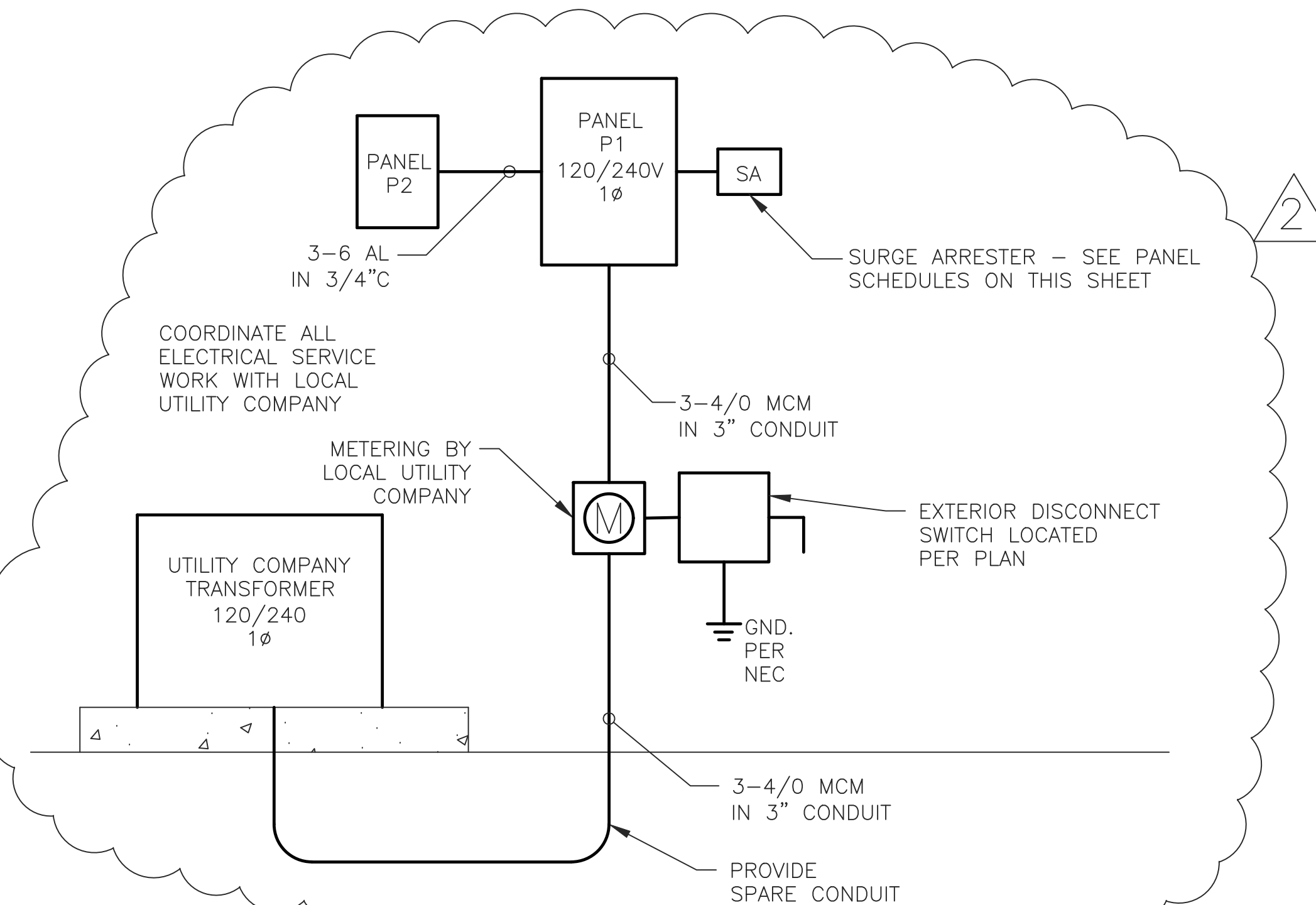
TAG	FIXTURE TYPE	DIFFUSER	COLOR	MTG	LAMP			VOLTS	MANUFACTURE & MODEL	LOCATION/REMARKS
					NO.	TYPE	WATTS			
A	4' LED LIGHT FIXTURE	POLYCARBONATE	WHITE	SURFACE	1	LED	45	120	KENALL N1048-P-1-45L35K-DCC-1-120	
B	2' LED LIGHT FIXTURE	POLYCARBONATE	WHITE	WALL	1	LED	25	120	KENALL R524-1-25L35K-DCC-1-120-WL	WET LOCATION RATED
C	12" SQUARE	POLYCARBONATE	DARK BRONZE	SURFACE	1	LED	25	120	KENALL H1212FM-PP-DB-25L35K-120	WET LOCATION RATED
D	ROUND UTILITY	POLYCARBONATE	WHITE	SURFACE	1	LED	12	120	BROWNLEE 2050-11-WH-B12-WHP	
E1	EXIT	POLYCARBONATE	WHITE	SURFACE	-	LED	4.5	120	KENALL METSU-MW-R-DT-EL	
E2	EMERGENCY EXIT COMBO	POLYCARBONATE	WHITE	SURFACE	2	LED	6.5	120	KENALL METEC-40N-MW-R-4-6.5L-120	
E3	EMERGENCY	POLYCARBONATE	WHITE	SURFACE	2	LED	6.5	120	KENALL METELHC-40N-MW-4-6.5L-120	
E4	EMERGENCY REMOTE HEAD	POLYCARBONATE	WHITE	SURFACE	1	LED	6.5	120	KENALL METER-MW-2-6.5L-12VAC/DC	



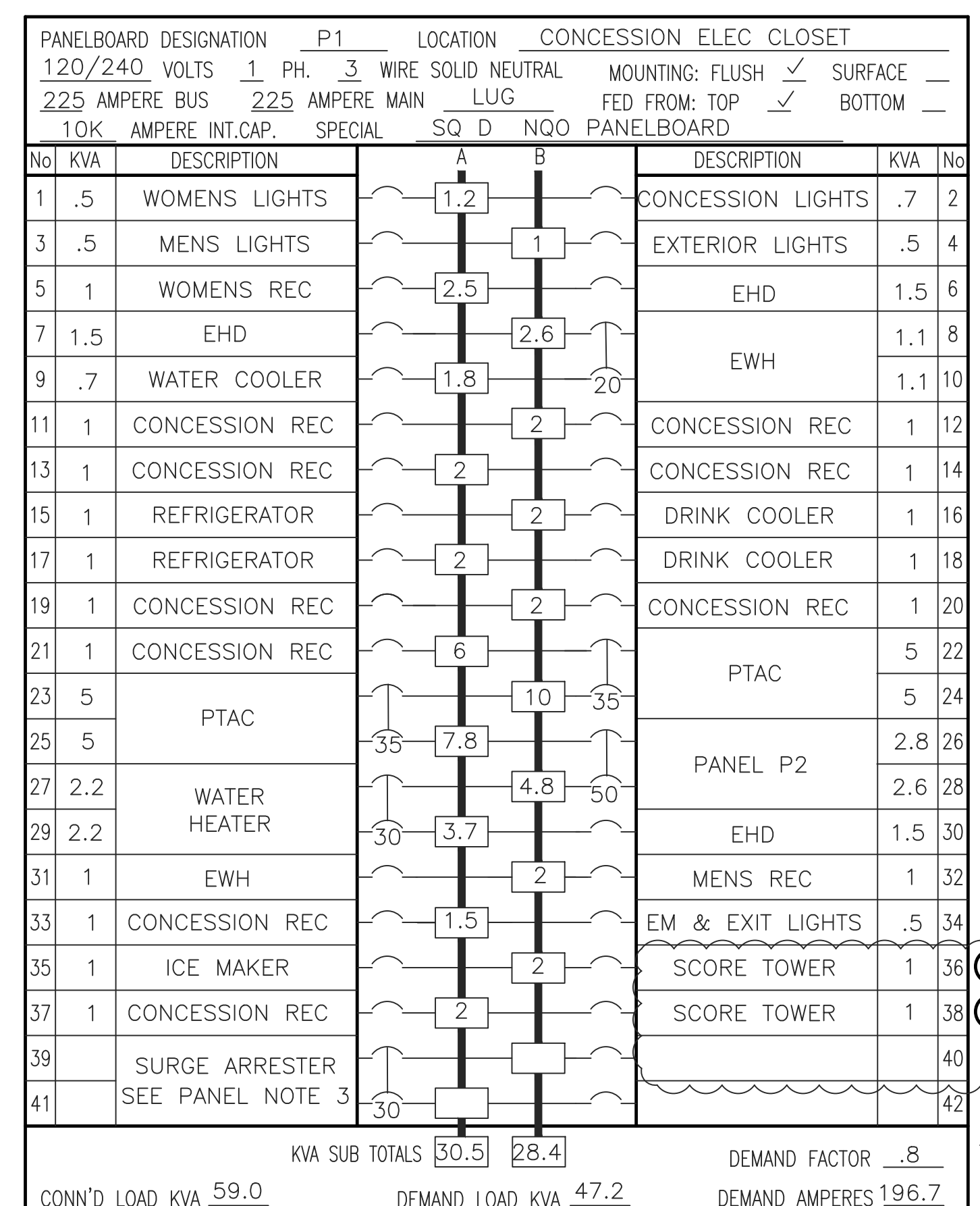
- PANEL NOTES
- ALL BREAKERS SHALL BE 1P 20A U.N.O. UN LESS OTHER WISE NOTED.
 - ALL BREAKERS SHALL BE BOLT ON TYPE.



DET 1
E2005
EXTERIOR LIGHTING CONTROL WIRING
SCALE: NOT TO SCALE



DET 1
E2005
ELECTRICAL ONE-LINE RISER DIAGRAM
SCALE: NOT TO SCALE



- PANEL NOTES
- ALL BREAKERS SHALL BE 1P 20A U.N.O. UN LESS OTHER WISE NOTED.
 - ALL BREAKERS SHALL BE BOLT ON TYPE.
 - PROVIDE WITH SQUARE D SURGE PROTECTOR.
 - FOR ALL TWO SCORE TOWERS AND LIGHTING.

ITEM	MOUNTING HEIGHT
SWITCHES	46" A.F.F. TO CENTER
RECEPTACLES	16" A.F.F. TO CENTER
COUNTER HEIGHT RECEPTACLES	48" A.F.F. TO CENTER
EXTERIOR W.P. G.F.I. RECEPTACLES	30" A.F.F. TO CENTER
CATV, PHONE & DATA JACKS	16" A.F.F. TO CENTER
EMERGENCY LIGHTS	84" A.F.F. TO TOP
EXIT LIGHTS - CEILING MOUNTED	MOUNT IN CEILING
EXIT LIGHTS - WALL MOUNTED	84" TO CENTER OR OVER DOOR
TYPICAL VANITY LIGHT	82" A.F.F. TO CENTER
CATV AND PHONE PANELS	36" A.F.F. TO CENTER
ELECTRICAL PANELS	72" A.F.F. TO TOP

- NOTES:
- UNLESS NOTED ELSEWHERE ON THE CONTRACT DOCUMENTS, THIS LIST REPRESENTS THE TYPICAL MOUNTING HEIGHTS REQUIRED FOR THE DEVICES SHOWN.
 - THE HEIGHTS INDICATED SHALL BE NOMINAL TO THE CENTER OF THE BOX, REQUIRING ONLY ONE BLOCK CUT FOR FLUSH MOUNTED DEVICES. MAINTAIN HEIGHT CONSISTENCY BETWEEN SURFACE AND FLUSH MOUNTED DEVICES.
 - CONTRACTOR TO VERIFY FINAL LOCATIONS AND MOUNTING DEPTH OF ALL BOXES WITH OWNER, FURNITURE SUPPLIER, GENERAL CONTRACTOR AND ARCHITECT BEFORE ROUGH IN.

BEST Engineering, LLC
MECHANICAL & ELECTRICAL CONSULTING ENGINEERS
24 Bobcat Dr
Pawleys Island, SC 29585
843.235.8280
brian@bestengineering.us

SGA | NarmourWright
DESIGN
8263 Ocean Highway
Pawleys Island, SC 29585
p 843.237.3421
www.sganwdesign.com

THESE DOCUMENTS PROVIDED BY SGA | NARMOURWRIGHT DESIGN ARE SUBJECT TO THE ARCHITECTURAL WORKS COPYRIGHT PROTECTION ACT AS INTELLECTUAL PROPERTY. SIMILAR PROTECTION IS ALSO APPLICABLE TO ELECTRONIC INFORMATION IN ANY FORM. THE USE OF THESE DOCUMENTS OF THE ELECTRONIC INFORMATION THAT PRODUCED FROM AND PROVIDED UNLESS OTHERWISE PROVIDED BY WRITING IS AND CONSENTATION TO THE ARCHITECT.



WAVERLY PARK
AT
WACCAMAW ELEMENTARY SCHOOL
1364 WAVERLY RD.
PAWLEYS ISLAND, SC 29585

PROJECT NUMBER: 19-004-04
ISSUE DATE: 05/29/2020
DRAWN BY: BES
CHECKED BY: BES

CONSTRUCTION DOCUMENTS

#	Description	Date
1	OSF Comments	1.22.21
2	Coordination Comments	5.24.21

ELECTRICAL NOTES, DETAILS & SCHEDULES
E200