

Transit Stop Accessibility

Contract Number: T-15-019-201

Chattanooga Department of Transportation

• **Question 1:** On sheet 2.3 reference is made to “Bus Shelters – by others” will the anchor bolts for these units be provided by others or does the contractor need to provide? If we need to provide please supply the requirements for the anchor bolts.

• **Response 1:** For clarification; The bus shelter is “[manufactured] by others” but shall be installed by the contractor, and any required assembly shall be completed by the contractor (per Bid Schedule line item ‘MISC-A’). The shelter manufacturer shall provide exact mounting specifications and also information on the included hardware. **Attached** is an anchor bolt detail for a Brasco, Monumental Series MN408 as an example. (Line item ‘MISC-A’ specifies Brasco, Monumental Series MN408 or **approved equal**).

• **Question 2:** On sheet 2.3 reference is made to “electrical conduit and fiber conduit to be routed to bus shelter structure. Allow for conduit penetrations in slab, typical” will the sleeves or conduits for these penetrations be supplied by others for installation into the slab and will the sweeps to outside the plan footprint of the slab be required by the contractor? If required, to what distance past the edge of the shelter slab? If the conduit is not provided, what dimensions will the penetrations need to be for these penetrations?

• **Response 2:** Sheet 2.3 has been revised (see **attached**). Conduit shall be supplied by the contractor.

• **Question 3:** In the pre-bid meeting it was indicated that the desired schedule for the project would be included we have been unable to locate any schedule information relative to overall project duration. Will a project schedule be published or should the contractor just submit the proposed schedule with our proposals?

• **Response 3:** The construction schedule is only dictated by Article VII on the first page of the contract (S00500-1) that was included in the bid documents; see that section for details.

T:\Projects\T-15-019 Transit Stop Accessibility\Drawings\Design\Transit Stop\Access.dwg Tab: DETAILS (2.3) Jun 06, 2019 - 2:41pm, ghurst



CITY OF CHATTANOOGA
DEPARTMENT OF TRANSPORTATION

ADMINISTRATOR:
BLYTHE BAILEY

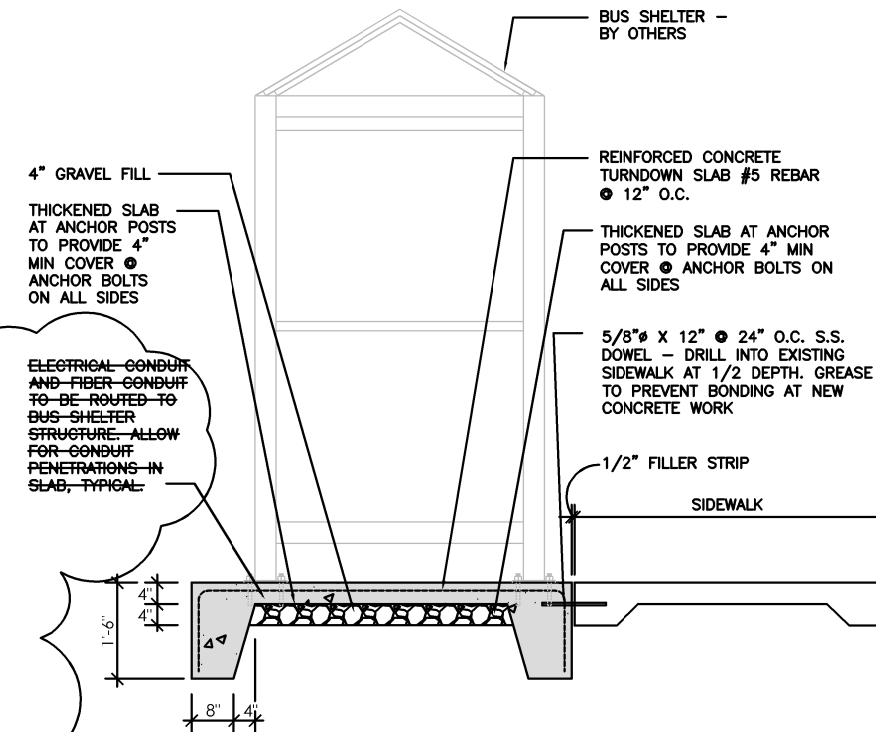
CITY TRANSPORTATION ENGINEER:
MARK HEINZER, P.E.

#	DATE	REVISIONS	SIG.
1	6/6/19	REVISED CONDUIT LAYOUT	GH

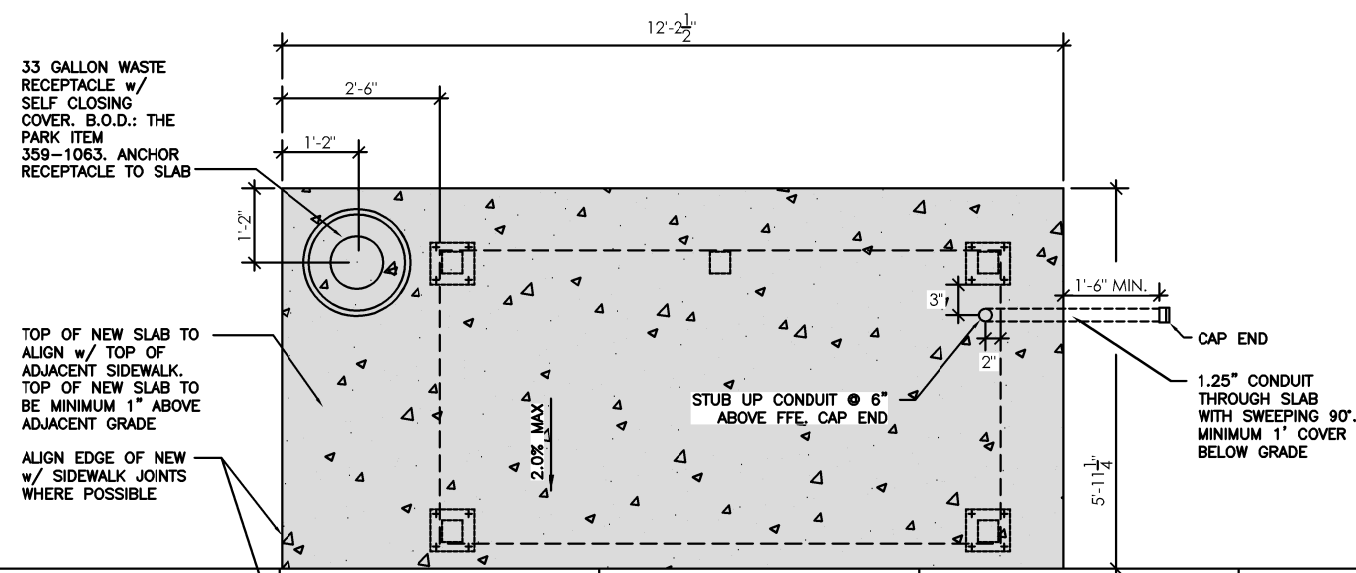
DATE:	3/25/2019
CONTRACT#	
SCALE:	
DRAWN:	GMH
DESIGN:	CHATT.
CHECKED:	CHATT.

DETAILS

SHEET: 2.3

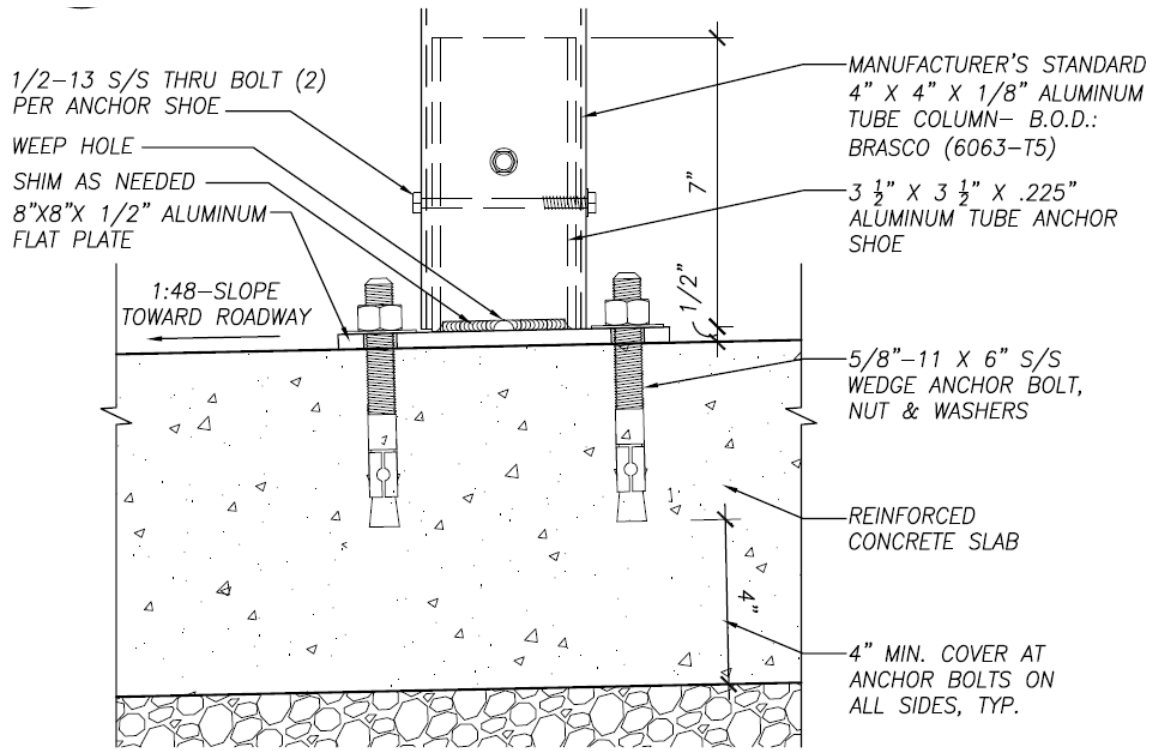


ELEVATION VIEW



PLAN VIEW

A TYPICAL CARTA BUS SHELTER SLAB
2.3 N.T.S.



Bus Shelter Anchor Detail for Brasco Monumental Series MN408.