

SECTION 096519 - RESILIENT TILE FLOORING

PART 1 - GENERAL

1.1 RELATED DOCUMENTS

- A. Drawings and general provisions of the Contract, including General and Supplementary Conditions and Division 01 Specification Sections, apply to this Section.

1.2 SUMMARY

- A. Section Includes:
 - 1. Quartz composition floor tile.
 - 2. Luxury vinyl tile

1.3 ACTION SUBMITTALS

- A. Product Data: For each type of product.
- B. Shop Drawings: For each type of resilient floor tile.
 - 1. Include floor tile layouts, edges, columns, doorways, enclosing partitions, built-in furniture, cabinets, and cutouts.
 - 2. Show details of special patterns.
- C. Samples: Full-size units of each color, texture, and pattern of floor tile required.
- D. Product Schedule: For floor tile. Use same designations indicated on Drawings.

1.4 INFORMATIONAL SUBMITTALS

- A. Qualification Data: For Installer.

1.5 CLOSEOUT SUBMITTALS

- A. Maintenance Data: For each type of floor tile to include in maintenance manuals.

1.6 MAINTENANCE MATERIAL SUBMITTALS

- A. Furnish extra materials, from the same product run, that match products installed and that are packaged with protective covering for storage and identified with labels describing contents.

1. Floor Tile: Furnish one box for every 50 boxes or fraction thereof, of each type, color, and pattern of floor tile installed.

1.7 QUALITY ASSURANCE

- A. Installer Qualifications: An entity that employs installers and supervisors who are competent in techniques required by manufacturer for floor tile installation and seaming method indicated.
 1. Engage an installer who employs workers for this Project who are trained or certified by floor tile manufacturer for installation techniques required.

1.8 DELIVERY, STORAGE, AND HANDLING

- A. Store floor tile and installation materials in dry spaces protected from the weather, with ambient temperatures maintained within range recommended by manufacturer, but not less than **50 deg F (10 deg C)** or more than **90 deg F (32 deg C)**. Store floor tiles on flat surfaces.

1.9 FIELD CONDITIONS

- A. Maintain ambient temperatures within range recommended by manufacturer, but not less than **70 deg F (21 deg C)** or more than **95 deg F (35 deg C)**, in spaces to receive floor tile during the following periods:
 1. 48 hours before installation.
 2. During installation.
 3. 48 hours after installation.
- B. After installation and until Substantial Completion, maintain ambient temperatures within range recommended by manufacturer, but not less than **55 deg F (13 deg C)** or more than **95 deg F (35 deg C)**.
- C. Close spaces to traffic during floor tile installation.
- D. Close spaces to traffic for 48 hours after floor tile installation.
- E. Install floor tile after other finishing operations, including painting, have been completed.

PART 2 - PRODUCTS

2.1 PERFORMANCE REQUIREMENTS

- A. Fire-Test-Response Characteristics: For resilient floor tile, as determined by testing identical products according to ASTM E648 or NFPA 253 by a qualified testing agency.
 1. Critical Radiant Flux Classification: Class I, not less than 0.45 W/sq. cm.

2.2 LUXURY VINYL TILE (LVT)

- A. Basis-of-Design Product: Subject to compliance with requirements, provide product indicated on Drawings or comparable product by one of the following:
 - 1. ShawContract.
 - 2. Johnsonite; a Tarkett company
 - 3. Armstrong.
- B. Tile Standard: ASTM F1700, Class III, Type B, embossed surface.
- C. Wearing Surface: 20 mil embossed.
- D. Thickness: **0.100 inch (2.5 mm)**.
- E. Size: 12" X 18".
- F. Colors and Patterns: Spacia Stone, Ceramic Dark SS5S3566.

2.3 INSTALLATION MATERIALS

- A. Trowelable Leveling and Patching Compounds: Latex-modified, portland-cement-based or blended hydraulic-cement-based formulation provided or approved by floor tile manufacturer for applications indicated.
- B. Adhesives: Water-resistant type recommended by floor tile and adhesive manufacturers to suit floor tile and substrate conditions indicated.
 - 1. Basis of Design: Amtico High Pressure Sensitive, Full Spread Adhesive for LVT suitable for RH 90%, MVER 8, pH5-9.
 - 2. Basis of Design: UPO Premium PSA Adhesive for QT
- C. Floor Polish: Provide protective, liquid floor-polish products recommended by floor tile manufacturer.

PART 3 - EXECUTION

3.1 EXAMINATION

- A. Examine substrates, with Installer present, for compliance with requirements for maximum moisture content and other conditions affecting performance of the Work.
 - 1. Verify that finishes of substrates comply with tolerances and other requirements specified in other Sections and that substrates are free of cracks, ridges, depressions, scale, and foreign deposits that might interfere with adhesion of floor tile.
- B. Proceed with installation only after unsatisfactory conditions have been corrected.

3.2 PREPARATION

- A. Prepare substrates according to floor tile manufacturer's written instructions to ensure adhesion of resilient products.
- B. Concrete Substrates: Prepare according to ASTM F710.
 - 1. Verify that substrates are dry and free of curing compounds, sealers, and hardeners.
 - 2. Remove substrate coatings and other substances that are incompatible with adhesives and that contain soap, wax, oil, or silicone, using mechanical methods recommended by floor tile manufacturer. Do not use solvents.
 - 3. Alkalinity and Adhesion Testing: Perform tests recommended by floor tile manufacturer. Proceed with installation only after substrate alkalinity falls within range on pH scale recommended by manufacturer in writing, but not less than 5 or more than 9 pH.
 - 4. Moisture Testing: Perform tests so that each test area does not exceed **200 sq. ft. (18.6 sq. m)**, and perform no fewer than three tests in each installation area and with test areas evenly spaced in installation areas.
 - a. Anhydrous Calcium Chloride Test: ASTM F1869. Proceed with installation only after substrates have maximum moisture-vapor-emission rate of **3 lb of water/1000 sq. ft. (1.36 kg of water/92.9 sq. m)** in 24 hours.
 - b. Relative Humidity Test: Using in-situ probes, ASTM F2170. Proceed with installation only after substrates have a maximum 75 percent relative humidity level measurement.
- C. Fill cracks, holes, and depressions in substrates with trowelable leveling and patching compound; remove bumps and ridges to produce a uniform and smooth substrate.
- D. Do not install floor tiles until materials are the same temperature as space where they are to be installed.
 - 1. At least 48 hours in advance of installation, move resilient floor tile and installation materials into spaces where they will be installed.
- E. Immediately before installation, sweep and vacuum clean substrates to be covered by resilient floor tile.

3.3 FLOOR TILE INSTALLATION

- A. Comply with manufacturer's written instructions for installing floor tile.
- B. Lay out floor tiles from center marks established with principal walls, discounting minor offsets, so tiles at opposite edges of room are of equal width. Adjust as necessary to avoid using cut widths that equal less than one-half tile at perimeter.
 - 1. Lay tiles square with room axis.

- C. Match floor tiles for color and pattern by selecting tiles from cartons in the same sequence as manufactured and packaged, if so numbered. Discard broken, cracked, chipped, or deformed tiles.
 - 1. Lay tiles with grain direction alternating in adjacent tiles (basket-weave pattern).
- D. Scribe, cut, and fit floor tiles to butt neatly and tightly to vertical surfaces and permanent fixtures including built-in furniture, cabinets, pipes, outlets, and door frames.
- E. Extend floor tiles into toe spaces, door reveals, closets, and similar openings. Extend floor tiles to center of door openings.
- F. Maintain reference markers, holes, and openings that are in place or marked for future cutting by repeating on floor tiles as marked on substrates. Use chalk or other nonpermanent marking device.
- G. Install floor tiles on covers for telephone and electrical ducts, building expansion-joint covers, and similar items in installation areas. Maintain overall continuity of color and pattern between pieces of tile installed on covers and adjoining tiles. Tightly adhere tile edges to substrates that abut covers and to cover perimeters.
- H. Adhere floor tiles to substrates using a full spread of adhesive applied to substrate to produce a completed installation without open cracks, voids, raising and puckering at joints, telegraphing of adhesive spreader marks, and other surface imperfections.

3.4 CLEANING AND PROTECTION

- A. Comply with manufacturer's written instructions for cleaning and protecting floor tile.
- B. Perform the following operations immediately after completing floor tile installation:
 - 1. Remove adhesive and other blemishes from surfaces.
 - 2. Sweep and vacuum surfaces thoroughly.
 - 3. Damp-mop surfaces to remove marks and soil.
- C. Protect floor tile from mars, marks, indentations, and other damage from construction operations and placement of equipment and fixtures during remainder of construction period.
- D. Floor Polish: Remove soil, adhesive, and blemishes from floor tile surfaces before applying liquid floor polish.
 - 1. Apply two coat(s).
- E. Cover floor tile until Substantial Completion.

END OF SECTION 096519



WACCAMAW ELEMENTARY SCHOOL
INTERIOR RENOVATIONS
Horry County School District
251 CLARBY RD. CONWAY, SC

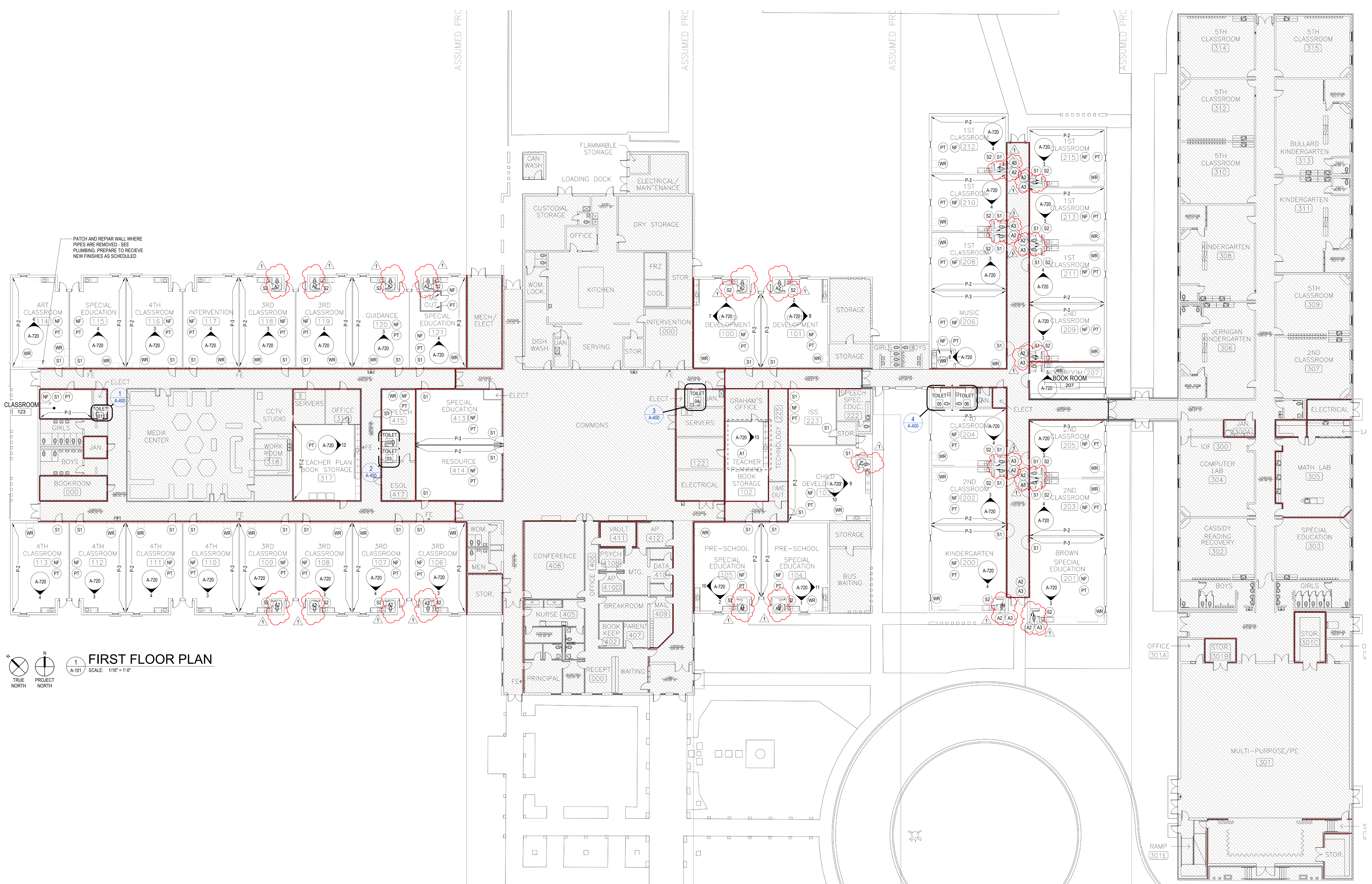
CONDITIONS OF USE:
THIS DRAWING AND THE DESIGN THEREON ARE THE PROPERTY OF QUACKENBUSH ARCHITECTS + PLANNERS.
THE REPRODUCTION, COPYING, OR USE OF THIS DRAWING WITHOUT WRITTEN CONSENT OF QUACKENBUSH ARCHITECTS + PLANNERS IS PROHIBITED AND ANY IMPROVEMENT WILL BE SUBJECT TO LEGAL ACTION.
COPYRIGHT © 2024 QUACKENBUSH ARCHITECTS + PLANNERS

PHASE
CONSTRUCTION DOCUMENTS
ISSUE DATE 1.13.23
PROJECT NO. 21.293.00

REVISION DATE
1 ADDENDUM 1 3.3.2023

TITLE
FLOOR PLAN

SHEET NO
A-101



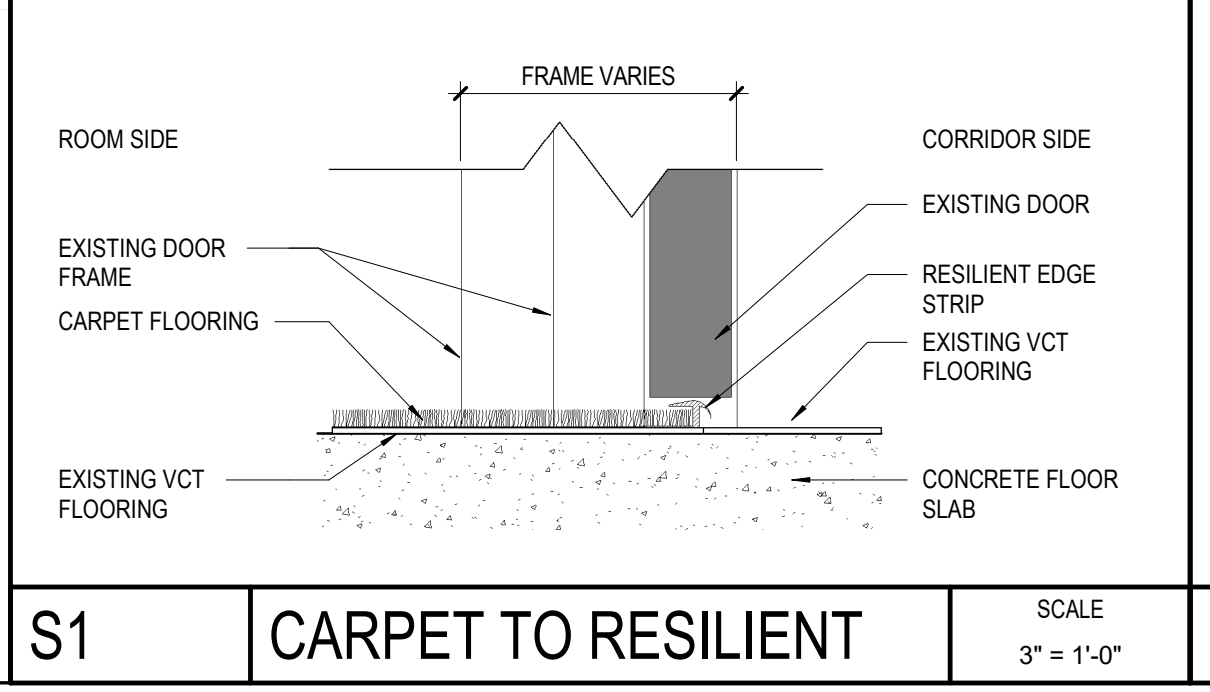
FIRST FLOOR PLAN
SCALE: 1/16" = 1'-0"
TRUE NORTH PROJECT NORTH

FLOOR PLAN NOTES

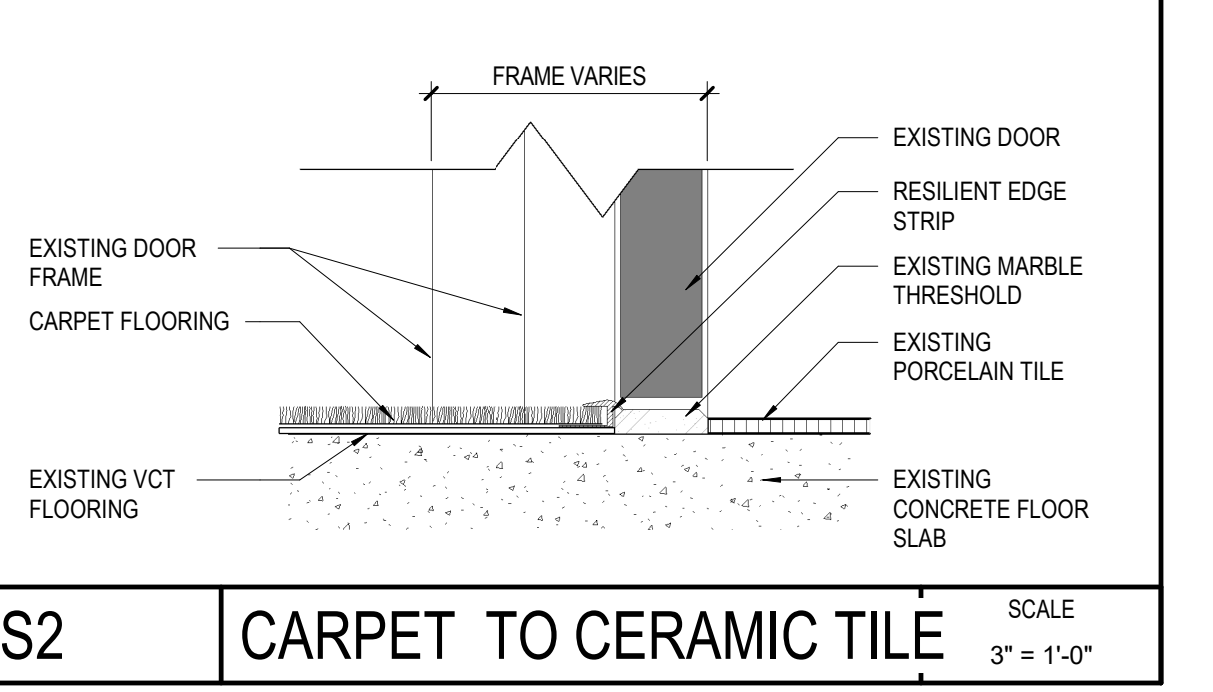
- PT INDICATES ROOM TO BE REPAINTED. INCLUDE HOLLOW METAL FRAMES.
- NF INDICATES LOCATIONS FOR NEW WALL BASE, AND CARPET FLOORING. REPLACE BROKEN, DAMAGED OR LOOSE TILES AND REMOVE ALL WAXES AND SIMILAR FINISHES BEFORE APPLYING ADHESIVE.
- WR WHERE CABINET IS REMOVED, PATCH AND REPAIR WALLS AND FLOORING AS REQUIRED TO RECEIVE NEW FINISHES.
- S1 DOOR SILL TRANSITION
- S2 DOOR SILL TRANSITION
- A1 ALTERNATE #1 - REPLACE CASEWORK AS INDICATED
- A2 ALTERNATE #2 - PAINT ENTIRE ROOM P-1
- A3 ALTERNATE #3 - REPLACE FLOORING AND WALL BASE IN CLASSROOM TOILET WITH LVT-1 AND RB-1

GENERAL FLOOR PLAN NOTES

- A. REFERENCE CASEWORK REPLACEMENT TYPES ON SHEET A-720 MILLWORK ELEVATIONS & DETAILS.
- B. PATCH FLOORING UNDER ALL ACCESSIBLE SINK LOCATIONS AND WHERE CASEWORK WAS REMOVED FOR SMOOTH EVEN FINISH. INSTALL FINISHES AS SCHEDULED.
- C. INSTALL WALL BASE ON THE KICK OF NEW CASEWORK TO MATCH WALL BASE IN ROOM U. O. N.



S1 CARPET TO RESILIENT SCALE 3" = 1'-0"



S2 CARPET TO CERAMIC TILE SCALE 3" = 1'-0"



WACCAW ELEMENTARY SCHOOL
INTERIOR RENOVATIONS
Horry County School District
251 CLARBY RD. CONWAY, SC

CONDITIONS OF USE
THIS DRAWING AND THE DESIGN THEREON ARE THE PROPERTY OF QUACKENBUSH ARCHITECTS + PLANNERS. THE REPRODUCTION, COPYING, OR USE OF THIS DRAWING WITHOUT WRITTEN CONSENT OF QUACKENBUSH ARCHITECTS + PLANNERS IS PROHIBITED AND AN INFRAVIOLATION WILL BE SUBJECT TO LEGAL ACTION.
COPYRIGHT © 2023 QUACKENBUSH ARCHITECTS + PLANNERS

PHASE
CONSTRUCTION DOCUMENTS

ISSUE DATE 1.13.23
PROJECT NO. 21.293.00

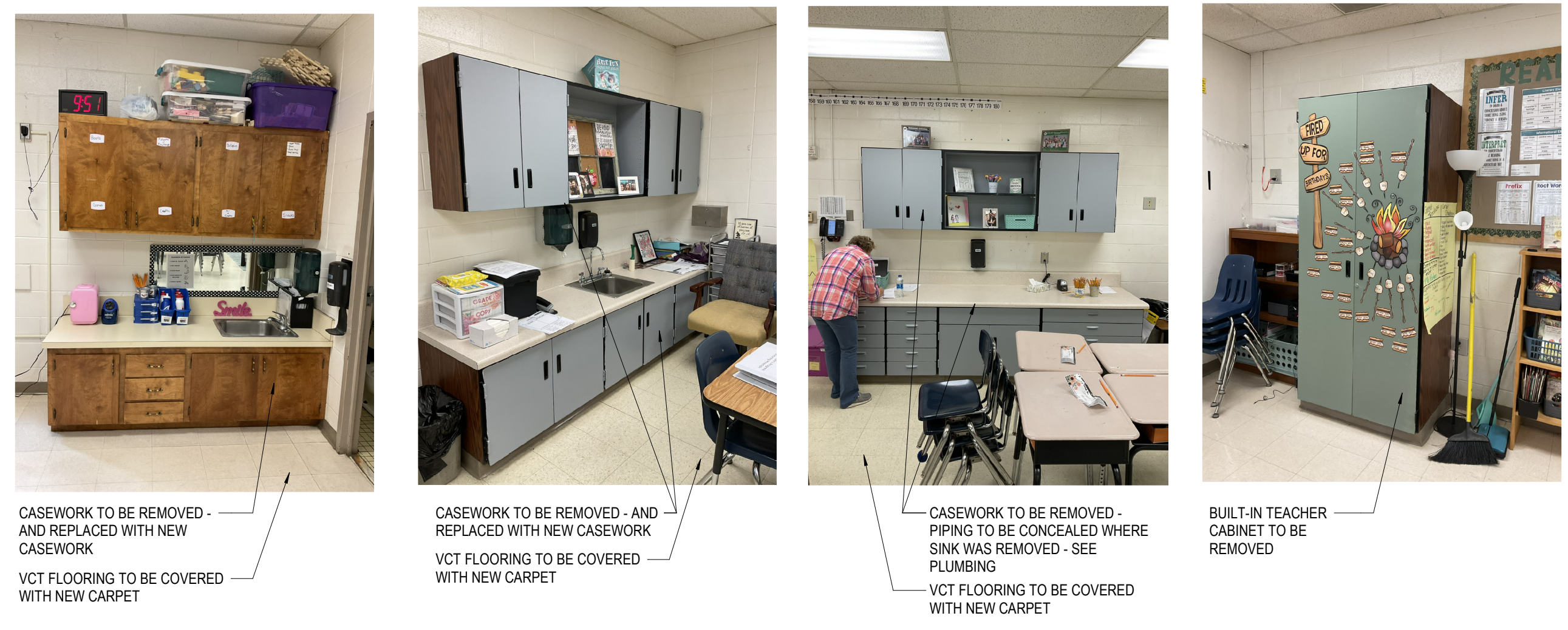
REVISION DATE
1 ADDENDUM 1 3.3.2023



1 AD-101 SCALE: 1/16" = 1'-0"

DEMOLITION PLAN NOTES TO SHEET

- AD2 REMOVE EXISTING SHEET VINYL AND WALL BASE AND PREPARE FLOOR AND WALLS TO RECEIVE NEW FINISH AS SCHEDULED - ALTERNATE #2
- DF1 REMOVE EXISTING WALL BASE IN ITS ENTIRETY INCLUDING ALL ASSOCIATED MASTIC. REMOVE TO INCLUDE ANY WALL BASE OR FIXED ELEMENTS - CASEWORK, ETC THAT WILL NOT BE REMOVED. PATCH AND PREPARE EXISTING WALLS TO RECEIVE NEW WALL BASE AS SCHEDULED.
- DF2 REMOVE EXISTING SHEET VINYL AND PREPARE FLOOR SLAB TO RECEIVE NEW FINISH AS SCHEDULED
- DM1 REMOVE EXISTING WALL, CABINETS, BASE CABINETS, COUNTER AND SINK (INCLUDING ASSOCIATED PIPING) IN THEIR ENTIRETY. PATCH WALLS AND SLABS TO MATCH EXISTING AND PREPARE TO RECEIVE NEW FINISHES AS SCHEDULED
- DM2 REMOVE EXISTING TALL CABINETS IN THEIR ENTIRETY. PATCH WALLS AND SLABS TO MATCH EXISTING AND PREPARE TO RECEIVE NEW FINISHES AS SCHEDULED
- DM3 REMOVE EXISTING HAND WASHING (AND TOILET ACCESSORIES WHERE APPLICABLE) AND PROTECT FOR REINSTALLATION. PATCH WALLS TO MATCH EXISTING WHERE ACCESSORIES ARE NOT REINSTALLED IN SAME LOCATION.
- DM4 REMOVE EXISTING WALL CABINETS, BASE CABINETS, AND COUNTER IN THEIR ENTIRETY. PATCH WALLS AND SLABS TO MATCH EXISTING AND PREPARE TO RECEIVE NEW FINISHES AS SCHEDULED
- DP1 CAP PIPING FROM EXISTING PLUMBING AT WALL - SEE PLUMBING
- DP3 REMOVE EXISTING SINK IN ITS ENTIRETY. CAP PIPING AT WALL - SEE PLUMBING



DEMOLITION LEGEND

- - - EXISTING CASEWORK TO BE REMOVED
- ▨ AREA NOT INCLUDED IN SCOPE

TITLE
FIRST FLOOR
DEMOLITION PLAN

SHEET NO. AD-101