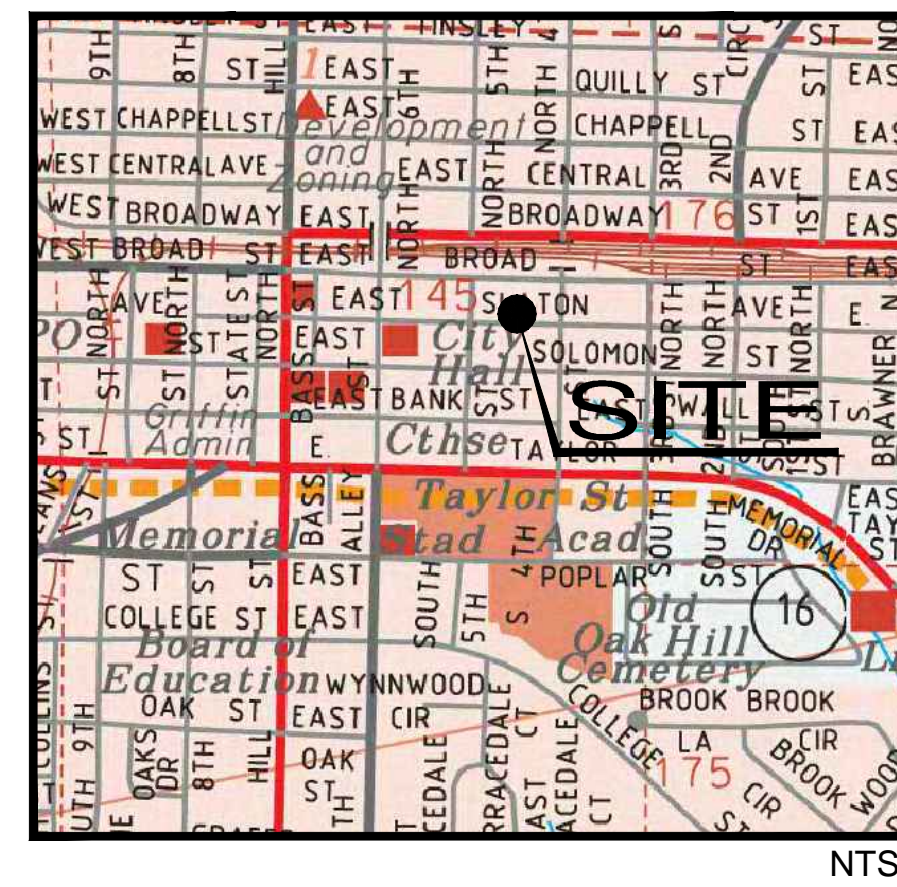


LOCATION MAP



NTS

UTILITY IMPROVEMENTS FOR FOR CITY OF GRIFFIN SOLOMON PARK

LOCATED AT
SOLOMON AND FIFTH STREET
GRIFFIN, GEORGIA
FEBRUARY 2018

PREPARED BY
PARAGON CONSULTING GROUP

118 NORTH EXPRESSWAY GRIFFIN, GA. 30223
PH. (770) 412-7700 FAX (770) 412-7744

24 HOUR CONTACT:
DANNY PRYOR
PH: (678) 873 - 6083
100 SOUTH HILL STREET
GRIFFIN, GEORGIA 30224



PRINT PRIMARY PERMITTEE NAME	24 HOUR CONTACT NUMBER
SIGNATURE PRIMARY PERMITTEE NAME	DATE
PRINT SECONDARY PERMITTEE NAME	24 HOUR CONTACT NUMBER
SIGNATURE SECONDARY PERMITTEE NAME	DATE
PRINT SECONDARY PERMITTEE NAME	24 HOUR CONTACT NUMBER
SIGNATURE SECONDARY PERMITTEE NAME	DATE



118 n. expressway griffin, georgia 30223
phone (770) 412-7700 fax (770) 412-7744

UTILITY IMPROVEMENTS FOR
CITY OF GRIFFIN
SOLOMON PARK

LOCATED IN LANDLOT 145 OF THE 2nd DISTRICT, SPALDING COUNTY

The client acknowledges that these documents are the work papers of Paragon Consulting Group, Inc. and are their instruments of professional service. These documents shall not be reused or modified in any way without the prior written authorization of Paragon Consulting Group, Inc.

SHEET:
COVER

LICS #: PEF004167



GSWCC LEVEL II CERT. # 0000010472

Project No. 17106.00	Issue Date: FEB 2018
Drawn By: DMG	Checked By: CNP

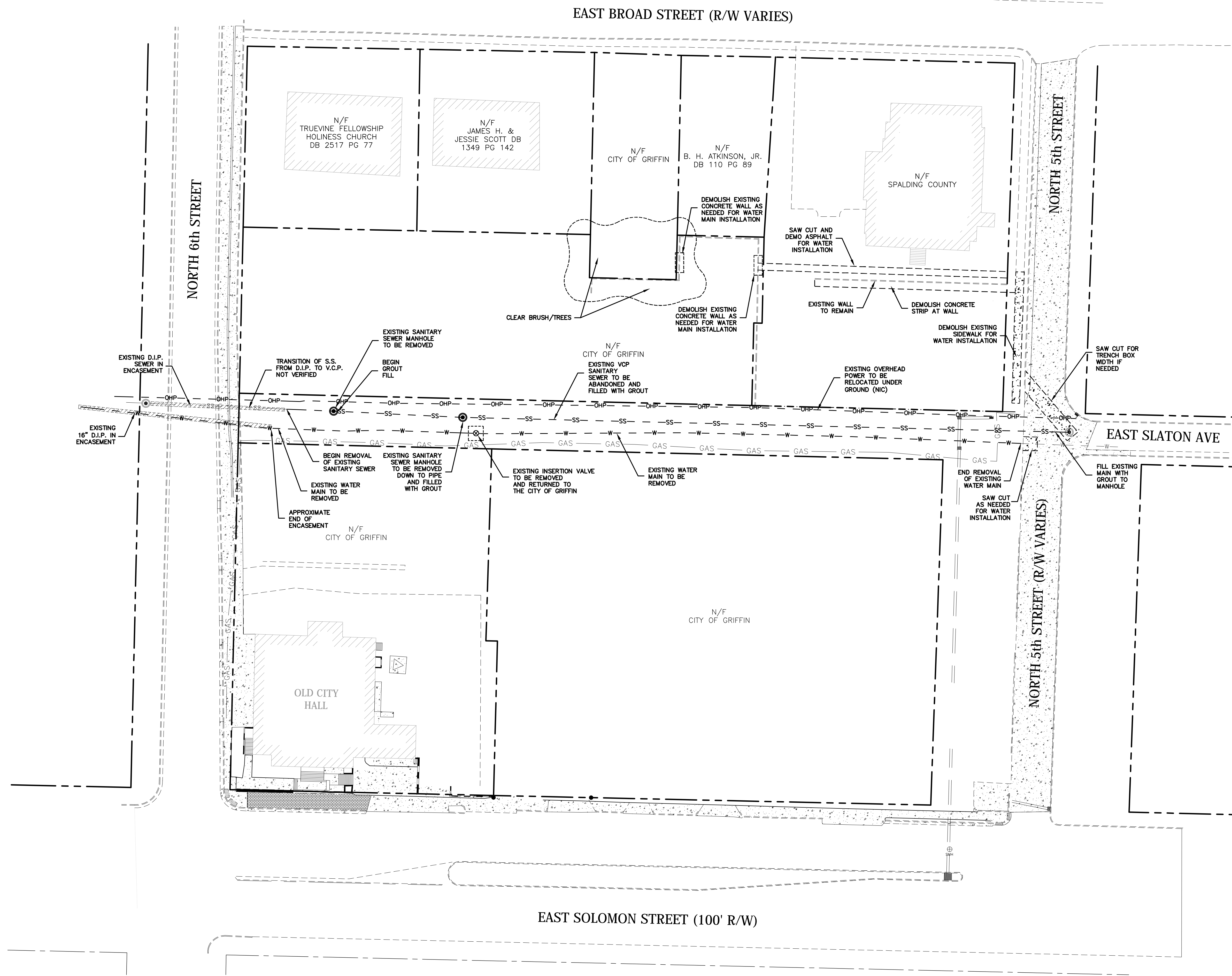
DRAWING LIST

- 1- Cover
- 2- Existing Conditions/Demo Plan
- 3- Utility Plan
- 4- Sanitary Profile
- 5- Construction Details
- 6- Construction Details

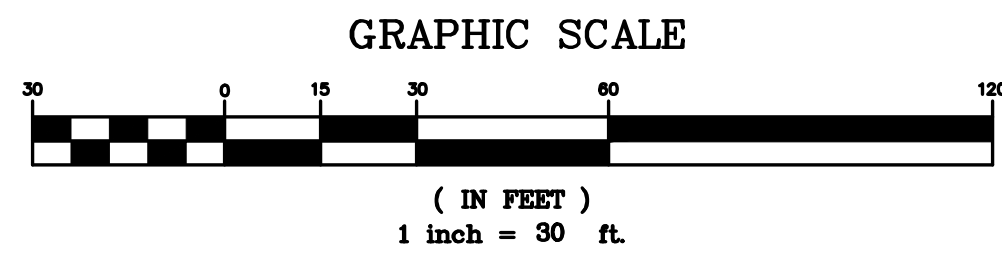
No.	Revisions:	Date
1.	Re-Issue for Addendum #3	4/11/2018

1

SHEET 1 OF 6



EXISTING CONDITIONS/DEMO PLAN



No.	Revisions:	Date
1.	Re-Issue for Addendum #3	4/11/2018

PARAGON
CONSULTING GROUP

118 n. expressway griffin, georgia 30223
phone (770) 412-7700 fax (770) 412-7744

UTILITY IMPROVEMENTS FOR
**CITY OF GRIFFIN
SOLOMON PARK**

LOCATED IN LANDLOT 145 OF THE 2nd DISTRICT, SPALDING COUNTY

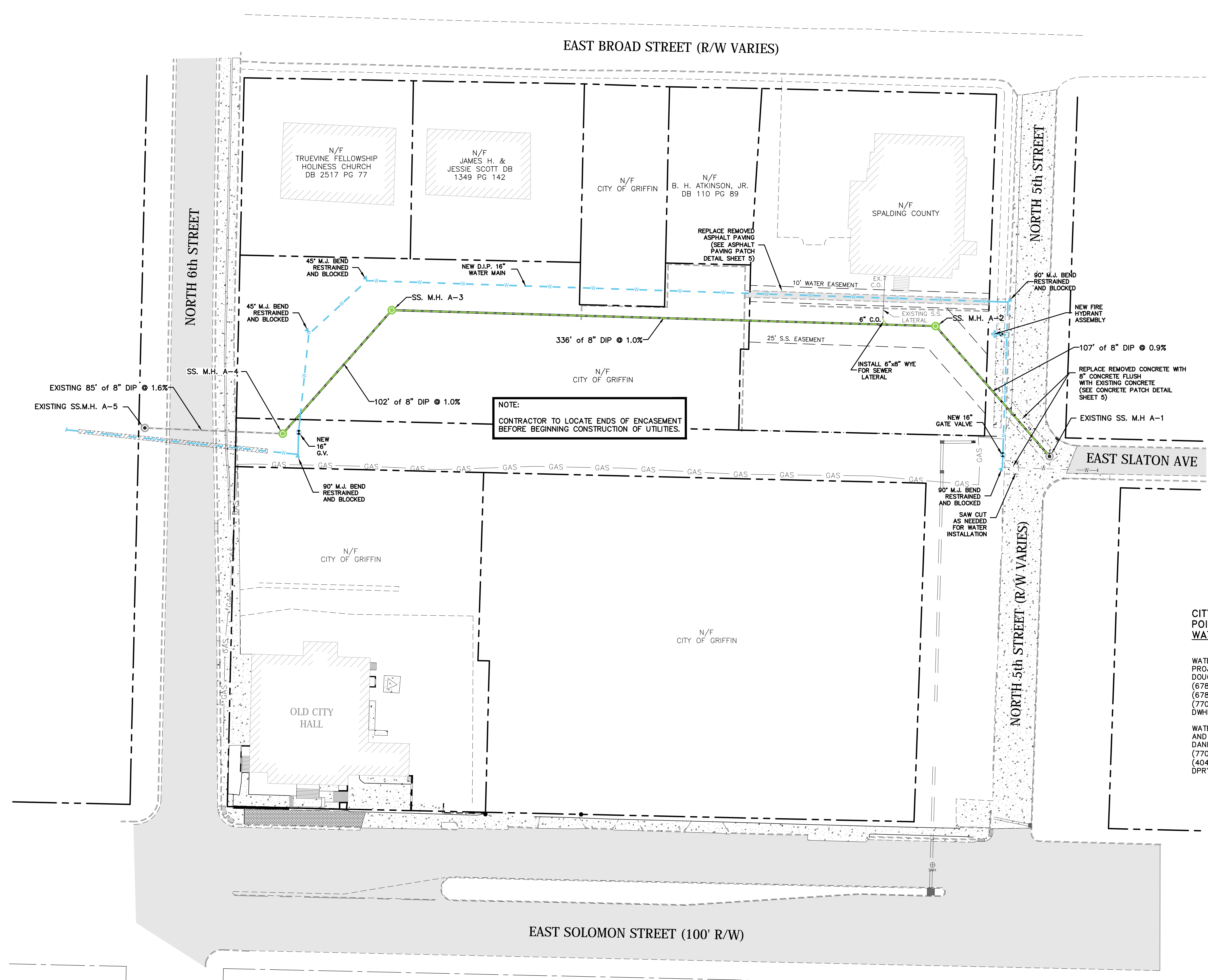
The client acknowledges that these documents are the work papers of Paragon Consulting Group, Inc. and are their instruments of professional service. These documents shall not be reused or modified in any way without the prior written authorization of Paragon Consulting Group, Inc.

SHEET: EXISTING
CONDITIONS/DEMO
PLAN

LICS #: PEF004167



Project No. 17106.00	Issue Date: FEB 2018
Drawn By: DMG	Checked By: CNP



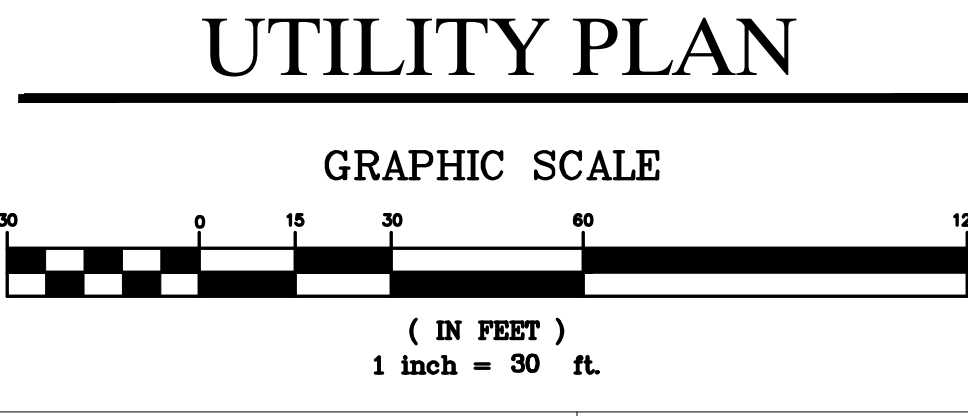
- UTILITY NOTES**
- STANDARD SPECIFICATIONS AND DETAILS SHALL GOVERN ALL WATER AND SANITARY SEWER MAIN CONSTRUCTION.
 - THE BUILDING CONTRACTOR IS RESPONSIBLE FOR LOCATION, SIZE AND SPECIFICATIONS OF ALL ELECTRICAL TRANSFORMER PADS FROM THE LOCAL POWER COMPANY AND PROVIDING SERVICE FROM THE TRANSFORMER TO THE BUILDING.
 - CONTRACTOR SHALL COORDINATE ANY DISRUPTIONS TO EXISTING UTILITY SERVICES WITH ADJACENT PROPERTY OWNERS AND IS RESPONSIBLE FOR REPAIRS OF DAMAGE TO ANY EXISTING UTILITIES DURING CONSTRUCTION AT NO EXTRA COST TO THE OWNER.
 - CONTRACTOR SHALL COMPLY TO THE FULLEST EXTENT WITH THE LATEST STANDARDS OR OSHA DIRECTIVES OR ANY OTHER AGENCY HAVING JURISDICTION FOR EXCAVATION AND TRENCHING PROCEDURES. THE CONTRACTOR SHALL SUPPORT SYSTEMS, SLOPING, BENCHING AND OTHER MEANS OF PROTECTION. THIS SHALL INCLUDE, BUT NOT BE LIMITED TO, ACCESS AND EGRESS FROM ALL EXCAVATION AND TRENCHING. CONTRACTOR IS RESPONSIBLE TO COMPLY WITH PERFORMANCE CRITERIA FOR OSHA.
 - ALL 6" AND LARGER SANITARY SEWER LINES ARE TO BE LOCATABLE, INCLUDING LATERALS.
 - ALL MANHOLES REQUIRE KOR-SEAL OR EQUAL RUBBER BOOTS.
 - THE TOP ELEVATION OF MANHOLES CONSTRUCTED IN PAVED AREAS SHALL MATCH FINISH GRADE, AND SHALL HAVE TRAFFIC BEARING LIDS. THE TOP ELEVATION OF MANHOLES CONSTRUCTED IN GRASSED AREAS MUST MATCH FINISHED GRADE (UNLESS OTHERWISE NOTED). ALL EXISTING MANHOLES AND UTILITY BOXES SHALL BE ADJUSTED AS NECESSARY TO MATCH PROPOSED GRADING.
 - ALL WATER PIPE 4" DIAMETER AND LARGER SHALL BE CLASS 350 PVC WATER PIPE WITH 150 PSI PRESSURE RATING CONFORMING TO AWWA, AND UNBELL PLASTIC PIPE STANDARD SPECIFICATIONS. FITTINGS 4" AND LARGER SHALL BE CAST IRON OR DUCTILE IRON CONFORM WITH WMA STANDARD SPECIFICATIONS.
 - ALL WATER PIPE 3" AND SMALLER SHALL BE TYPE K COPPER.
 - CONTRACTOR SHALL MAINTAIN A MINIMUM OF 4' OVER ALL WATER LINES.
 - CONTRACTOR SHALL COORDINATE INSTALLATION OF WATER SERVICE WITH WATER DEPARTMENT. CONTRACTOR SHALL BE RESPONSIBLE FOR INSTALLATION, PURCHASE, AND/OR FEES ASSOCIATED WITH ALL APPARATUS INCLUDING WATER METERS, BACK FLOW PREVENTERS, POST INDICATOR VALVES, AND ENCLOSURES.
 - THE MINIMUM HORIZONTAL SEPARATION BETWEEN THE CLOSEST TWO POINTS OF WATER AND SEWER LINE IS TEN FEET (10'). THE MINIMUM VERTICAL SEPARATION BETWEEN THE CLOSEST TWO POINTS OF THE WATER AND SEWER LINES IS EIGHTEEN INCHES (18").
 - ALL FIRE HYDRANTS SHALL CONFORM TO LOCAL REQUIREMENTS.
 - ALL DOMESTIC WATER LEADS SHALL HAVE REDUCED PRESSURE VALVES AS DIRECTED BY THE OWNERS ARCHITECT/ENGINEER.
 - EXISTING UTILITIES LOCATIONS ARE APPROXIMATE AND SHOULD BE VERIFIED FOR LOCATION AND NUMBER BY THE CONTRACTOR.
 - ALL ELECTRIC, TELEPHONE AND GAS LINES, INCLUDING SERVICE LINES, ARE TO BE CONSTRUCTED IN ACCORDANCE WITH THE APPROPRIATE UTILITY COMPANIES SPECIFICATIONS.
 - CONTRACTOR TO COORDINATE INSTALLATION OF ALL UTILITIES BY OTHERS WITH HIS WORK.
 - PRIMARY ELECTRIC SERVICE IS PROVIDED BY THE POWER COMPANY. THIS INCLUDES THE TRANSFORMER, TRENCHING, AND BACKFILL. TRANSFORMER PAD AND FINAL CONNECTION OF THE TRENCH IS THE RESPONSIBILITY OF THE CONTRACTOR. CONTRACTOR IS RESPONSIBLE FOR COORDINATION AND FEES ASSOCIATED WITH POWER SERVICE AS WELL AS SECONDARY SERVICE.
 - GAS LINES ARE INDICATED FOR COORDINATION ONLY. CONTRACTOR IS RESPONSIBLE FOR COORDINATION AND FEES ASSOCIATED WITH GAS SERVICE.
 - GAS AND UNDERGROUND ELECTRIC LINES ARE SHOWN FOR COORDINATION ONLY. EXACT LOCATION WILL BE FIELD DETERMINED DURING CONSTRUCTION.

NOTE:
CONTRACTOR TO LOCATE ENDS OF ENCASEMENT BEFORE BEGINNING CONSTRUCTION OF UTILITIES.

**CITY OF GRIFFIN
POINTS OF CONTACT LIST
WATER & WASTEWATER DEPARTMENT**

WATER & WASTEWATER CONSTRUCTION PROJECT MANAGER DOUGLAS WHITE (678) 692-0404 OFFICE (678) 435-1772 (770) 233-9275 FAX DWHITE@CITYOFGRIFFIN.COM	ASST. SUPERINTENDENT WASTEWATER NEIL MONROE (770) 229-6420 OFFICE (404) 391-4769 24 HOUR NMONROE@CITYOFGRIFFIN.COM
WATER & WASTEWATER CONSTRUCTION AND MAINTENANCE SUPERINTENDENT DANNY PRYOR (770) 229-6420 OFFICE (404) 873-6038 DPYOR@CITYOFGRIFFIN.COM	ASST. SUPERINTENDENT WATER SHANE ANDREWS (770) 229-6420 OFFICE (678) 233-4360 24 HOUR SANDREWS@CITYOFGRIFFIN.COM

- PROJECT NOTES**
- FIRE HYDRANT TO BE FIELD LOCATED PER ENGINEERS DIRECTION.
 - ALL M.J. FITTINGS ARE TO BE RETAINED WITH MEGA LUG SERIES 1100 AND CONCRETE BLOCKING.
 - ALL 16" DIP PUSH ON JOINTS TO HAVE GRIP TYPE FIELD LOC 350 GASKETS.
 - EXISTING VCP SEWER IS TO BE GROUDED IN PLACE. EXISTING MANHOLE MAY BE REMOVED TO 2'-0" ABOVE PIPE AND FILLED WITH GROUT AS PART OF THE LUMP SUM GROUDED ITEM.



PARAGON
CONSULTING GROUP

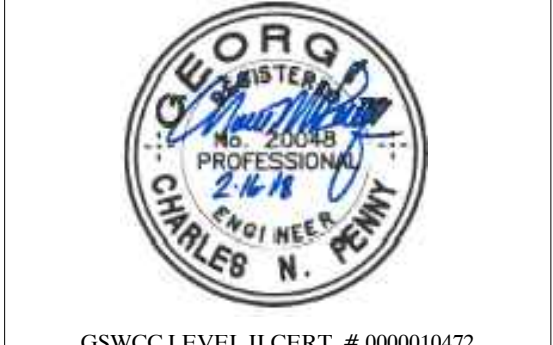
118 n. expressway griffin, georgia 30223
phone (770) 412-7700 fax (770) 412-7744

UTILITY IMPROVEMENTS FOR
**CITY OF GRIFFIN
SOLOMON PARK**
LOCATED IN LANDLOT 145 OF THE 2nd DISTRICT, SPALDING COUNTY

The client acknowledges that these documents are the work papers of Paragon Consulting Group, Inc. and are their instruments of professional service. These documents shall not be reused or modified in any way without the prior written authorization of Paragon Consulting Group, Inc.

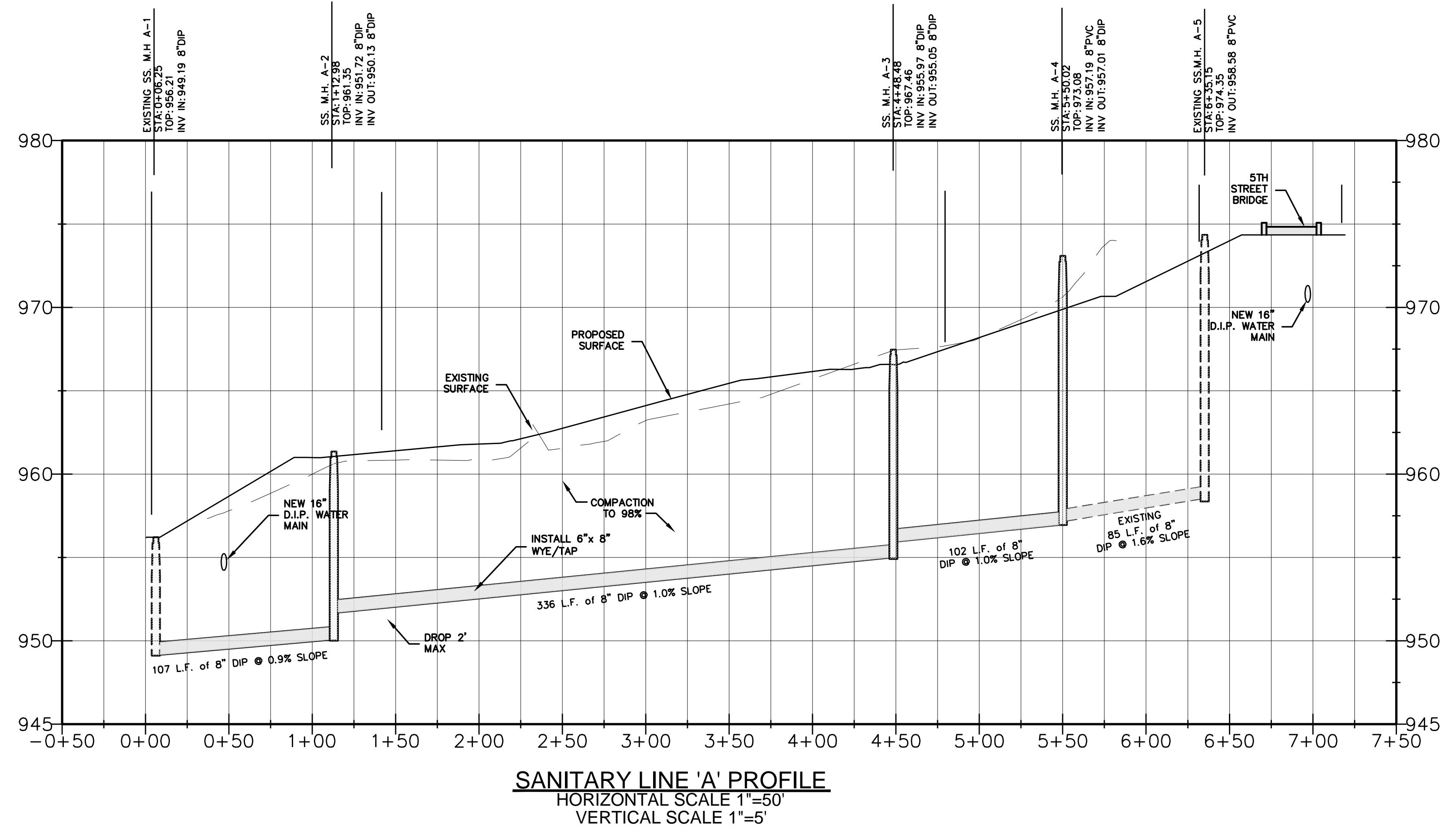
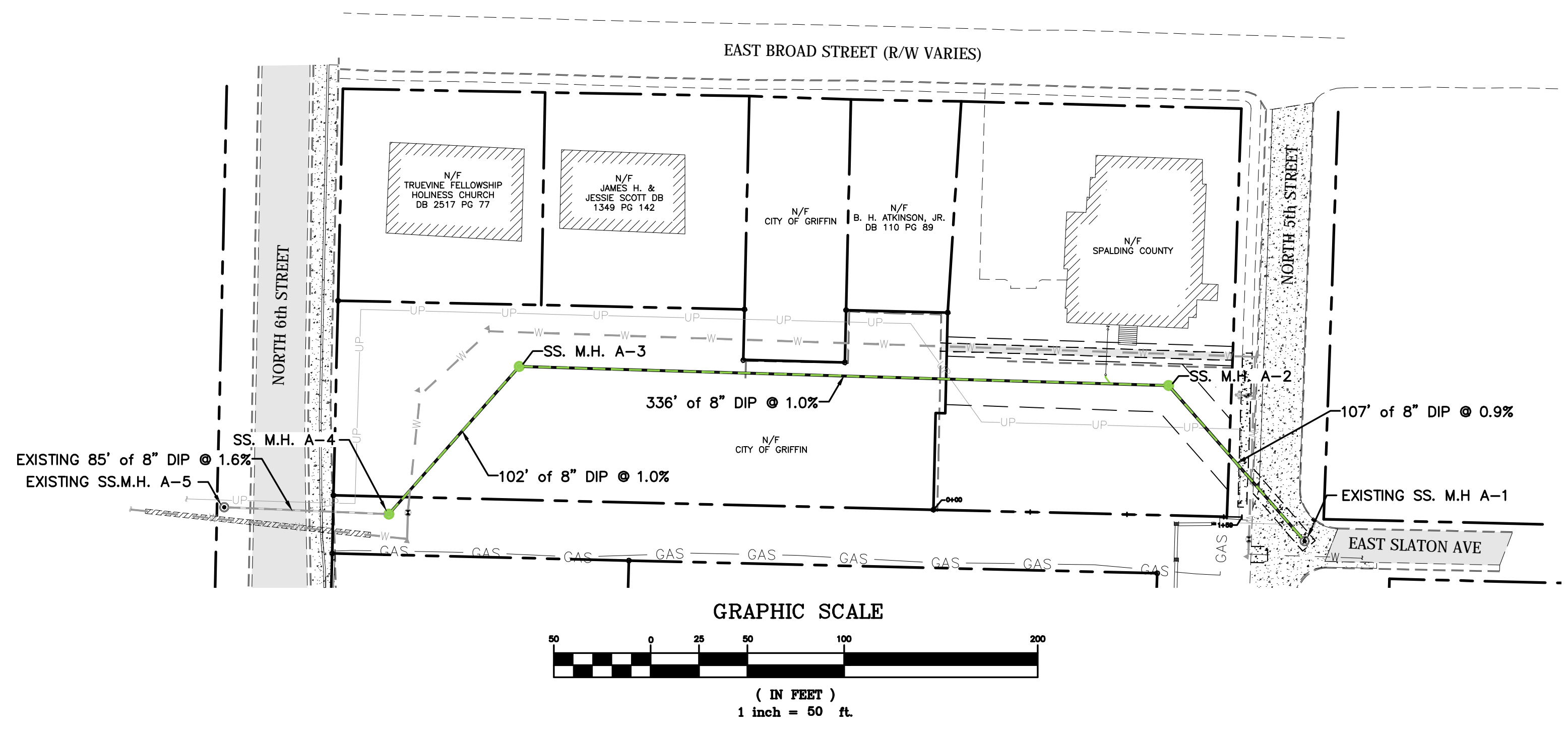
SHEET:
UTILITY PLAN

LICS #: PEF004167



Project No. 17106.00	Issue Date: FEB 2018
Drawn By: DMG	Checked By: CNP

No.	Revisions:	Date
1.	Re-Issue for Addendum #3	4/11/2018



SANITARY LINE 'A' PROFILE
 HORIZONTAL SCALE 1"=50'
 VERTICAL SCALE 1"=5'

PARAGON
 CONSULTING GROUP

118 n. expressway griffin, georgia 30223
 phone (770) 412-7700 fax (770) 412-7744

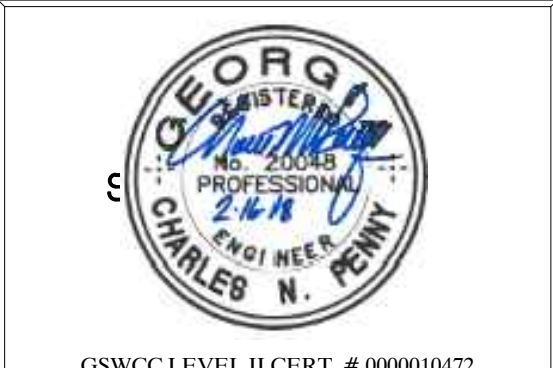
UTILITY IMPROVEMENTS FOR
CITY OF GRIFFIN
SOLOMON PARK

LOCATED IN LANDLOT 145 OF THE 2ND DISTRICT, SPALDING COUNTY

The client acknowledges that these documents are the work papers of Paragon Consulting Group, Inc. and are their instruments of professional service. These documents shall not be reused or modified in any way without the prior written authorization of Paragon Consulting Group, Inc.

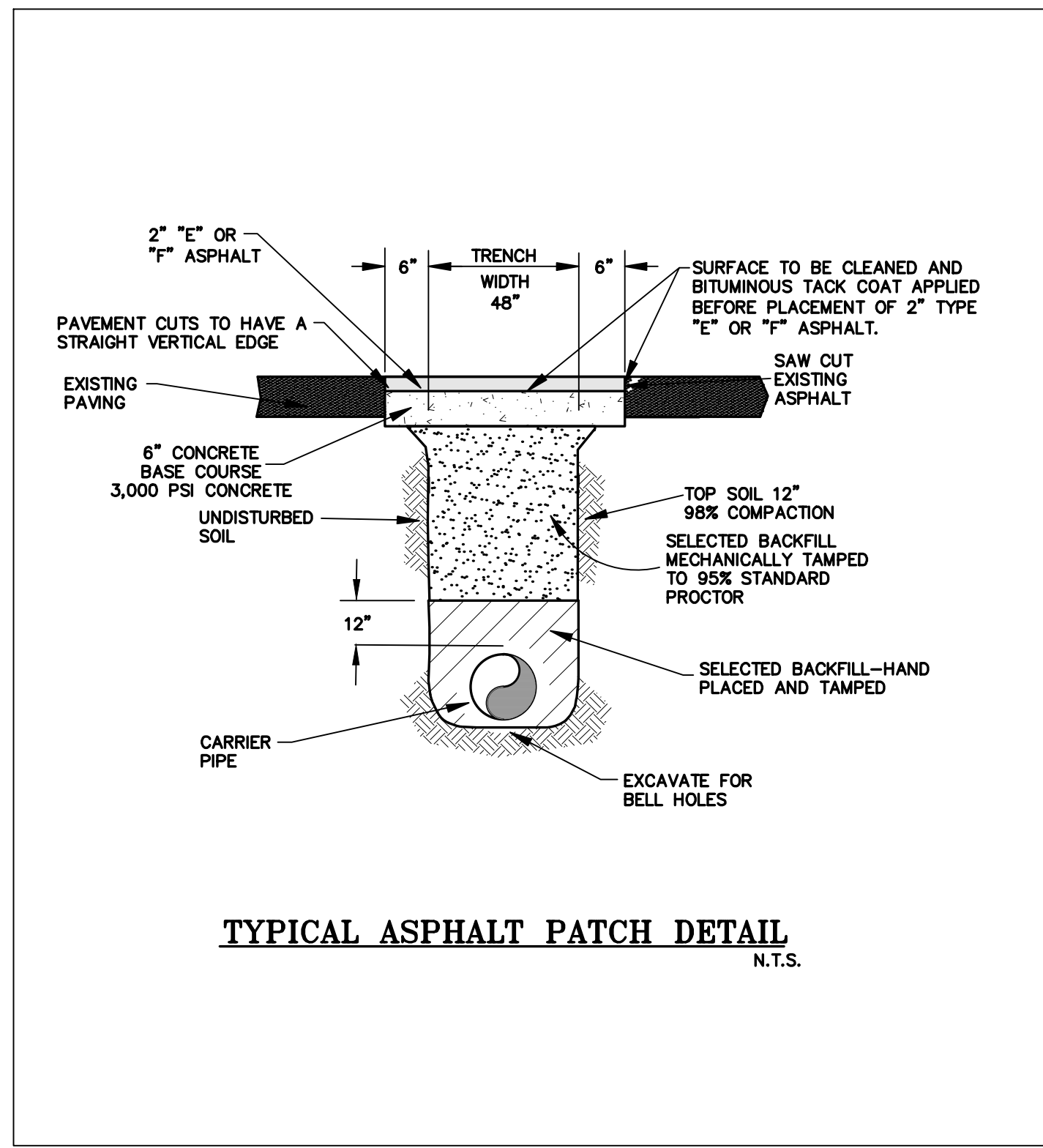
SHEET:
 SANITARY PROFILE

LICS #: PEF004167

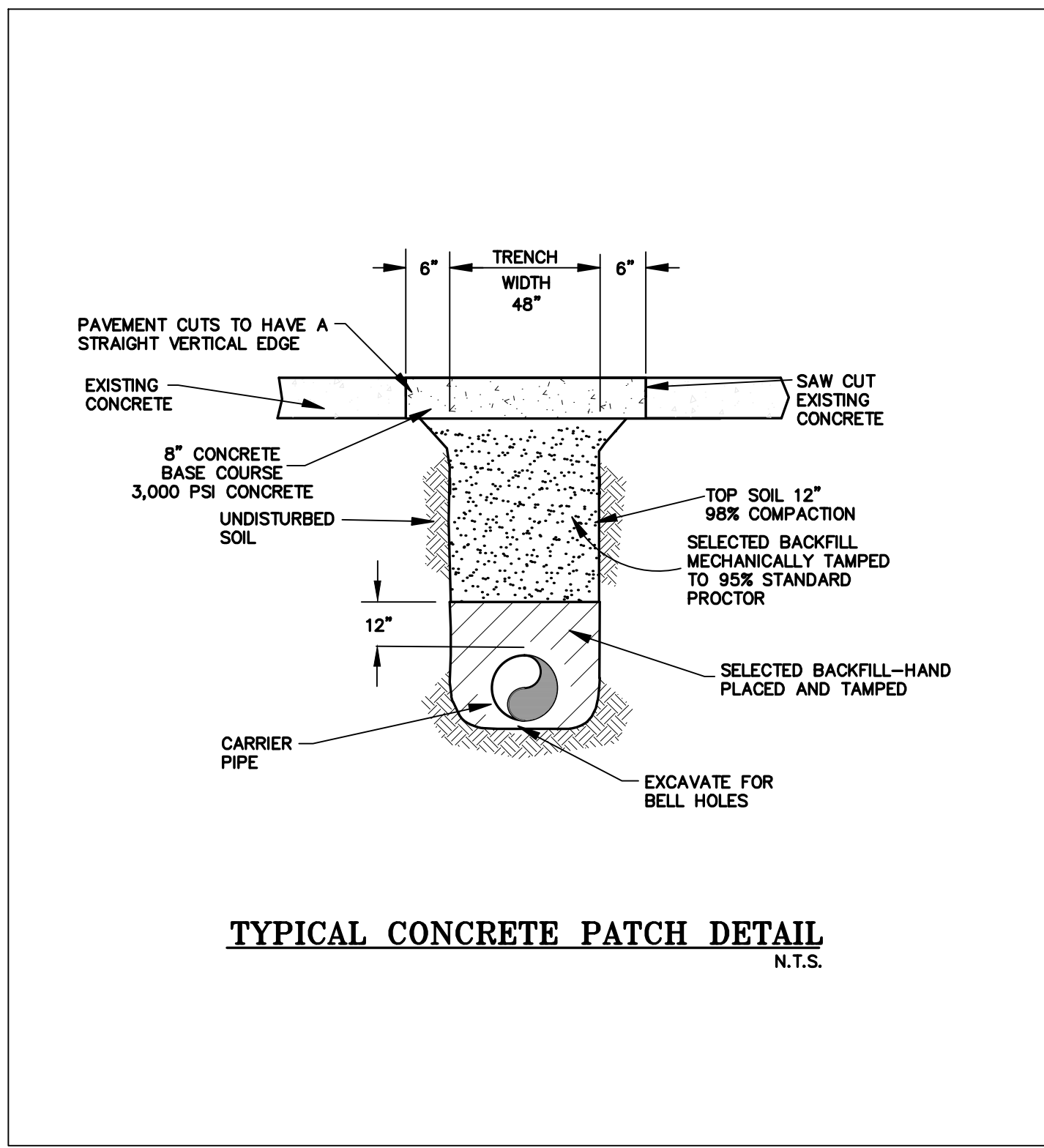


Project No. 17106.00	Issue Date: FEB 2018
Drawn By: DMG	Checked By: CNP

No.	Revisions:	Date
1.	Re-Issue for Addendum #3	4/11/2018



TYPICAL ASPHALT PATCH DETAIL
N.T.S.



TYPICAL CONCRETE PATCH DETAIL
N.T.S.

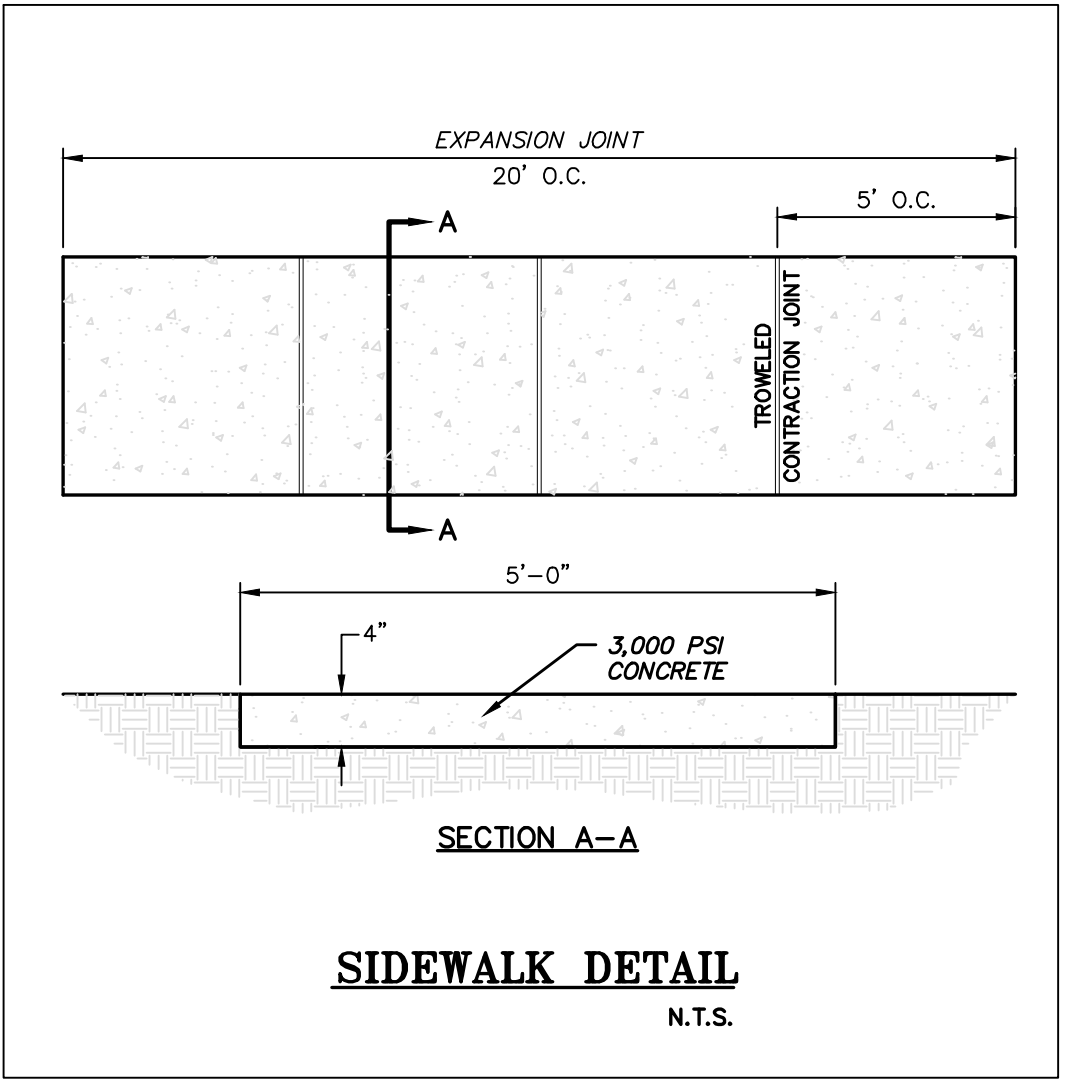
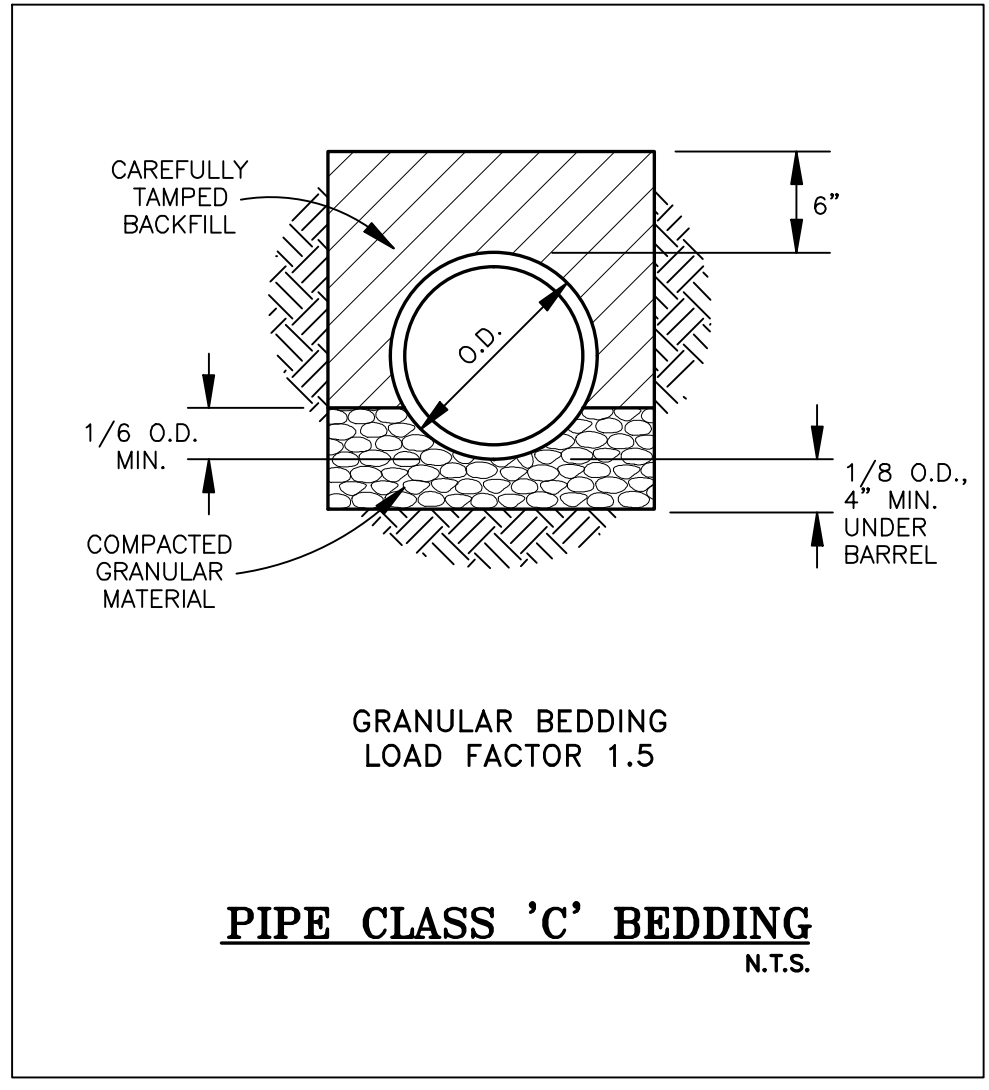
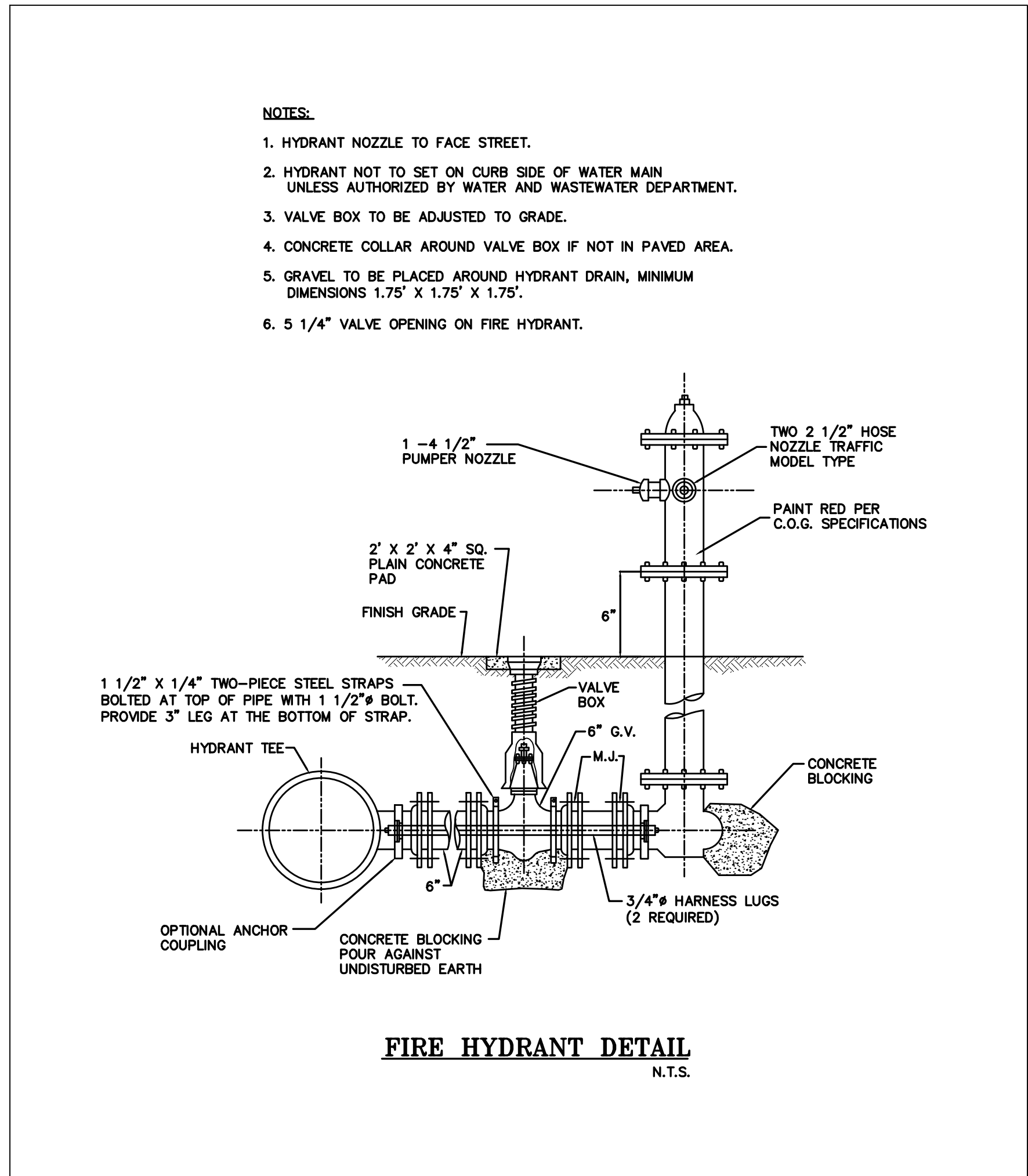
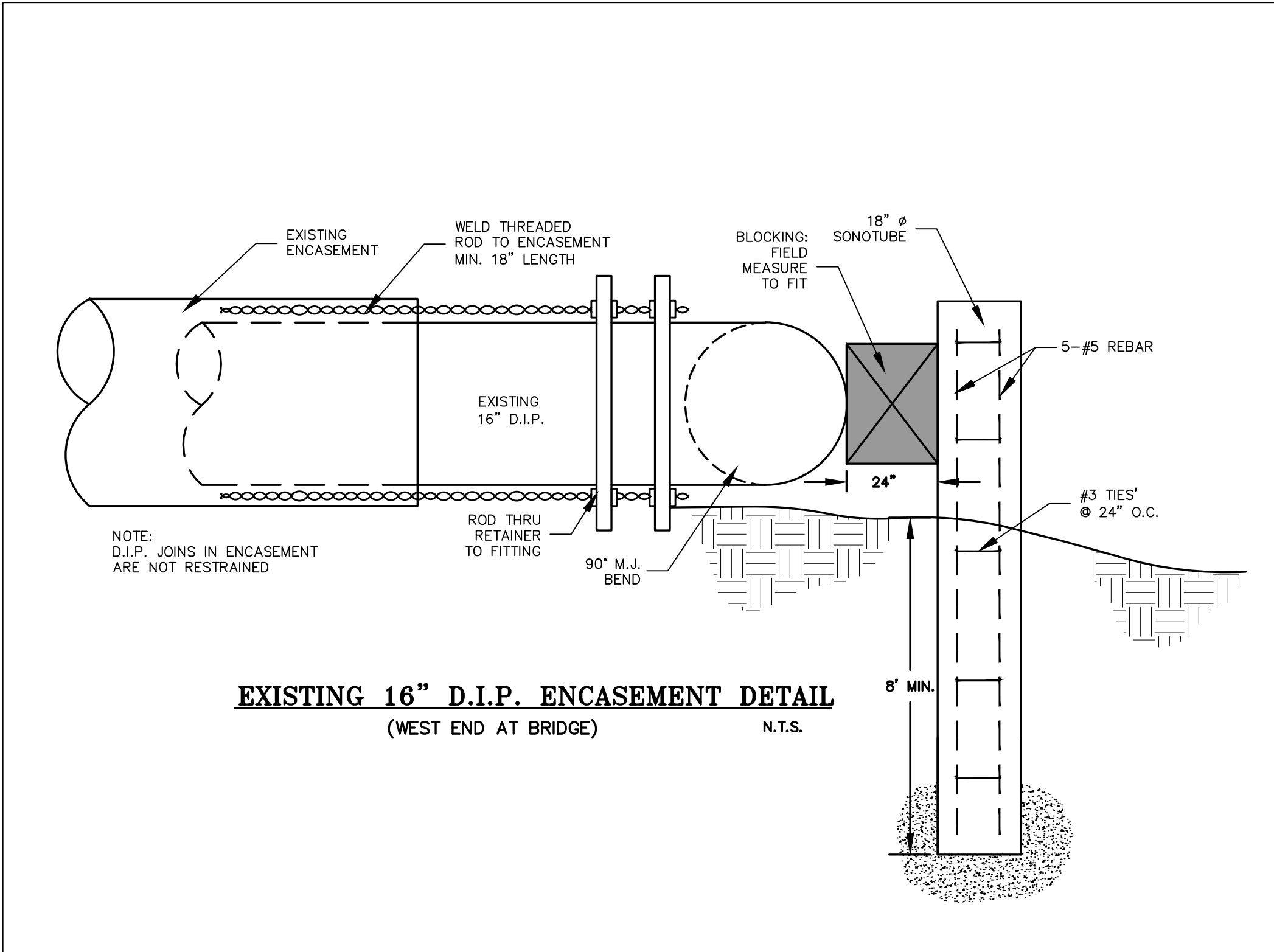
MINIMUM DIMENSIONS IN FEET FOR CONCRETE BLOCKING

BEND	SIZE	A (FT.)	B (FT.)	C (IN.)	D (FT.)	VOLUME (CU YDS) APPROX.	THRUST (LBS.)
11 1/4"	6"	1.0	2.0	6	1.0	0.04	1,365
	8"	1.0	2.0	7	1.0	0.05	1,825
	10"	1.0	2.0	8	1.0	0.07	2,550
	12"	1.0	2.0	11	2.0	0.24	3,825
	14"	1.0	2.0	13	2.0	0.26	3,960
22 1/2"	6"	2.0	3.5	12	3.0	0.48	5,400
	8"	2.0	3.5	15	4.0	0.74	8,100
	10"	2.0	3.5	18	5.0	1.17	12,600
	12"	2.0	3.5	21	6.0	1.74	18,900
45°	6"	1.0	2.0	6	1.5	0.06	3,415
	8"	1.0	2.0	7	2.0	0.10	3,825
	10"	1.0	2.0	9	2.5	0.17	4,950
	12"	1.0	2.0	11	3.0	0.27	6,750
90°	6"	1.0	2.0	6	3.0	0.12	4,950
	8"	1.0	2.0	7	4.0	0.16	6,750
	10"	1.0	2.0	9	5.0	0.24	9,900
	12"	1.0	2.0	11	6.0	0.36	14,850
TEES AND PLUGS	6"	1.0	2.5	12	1.5	0.13	4,950
	8"	1.0	2.5	14	2.0	0.18	6,750
	10"	1.0	2.5	16	2.5	0.27	9,900
	12"	1.0	2.5	18	3.0	0.41	14,850

NOTES:
1. SOIL CONDITIONS SHALL BE VERIFIED BY THE ENGINEER BEFORE THRUST BLOCK DESIGN IS IMPLEMENTED.
DESIGN DATA
1. DIMENSION OF THRUST BLOCK IN FEET BASED ON 2000 POUNDS PER SQUARE FOOT SOIL BEARING PRESSURE. ACTUAL INSIDE DIA. OF D.I.P., CLASS 31,250 P.S.I. TEST PRESSURE.
2. CONCRETE SHALL BE CLASS A, 3000 P.S.I.
3. UNDER ADVERSE CONSTRUCTION CONDITIONS, CONCRETE SHALL BE "HIGH EARLY" TYPE.

THRUST RESTRAINT:
HORIZONTAL BLOCK

THURST CONCRETE BLOCKING
N.T.S.



No.	Revisions:	Date
1.	Re-Issue for Addendum #3	4/11/2018

PARAGON
CONSULTING GROUP

118 n. expressway griffin, georgia 30223
phone (770) 412-7700 fax (770) 412-7744

UTILITY IMPROVEMENTS FOR
CITY OF GRIFFIN
SOLOMON PARK

LOCATED IN LANDLOT 145 OF THE 2ND DISTRICT, SPALDING COUNTY

The client acknowledges that these documents are the work papers of Paragon Consulting Group, Inc. and are their instruments of professional service. These documents shall not be reused or modified in any way without the prior written authorization of Paragon Consulting Group, Inc.

SHEET:
CONSTRUCTION
DETAILS

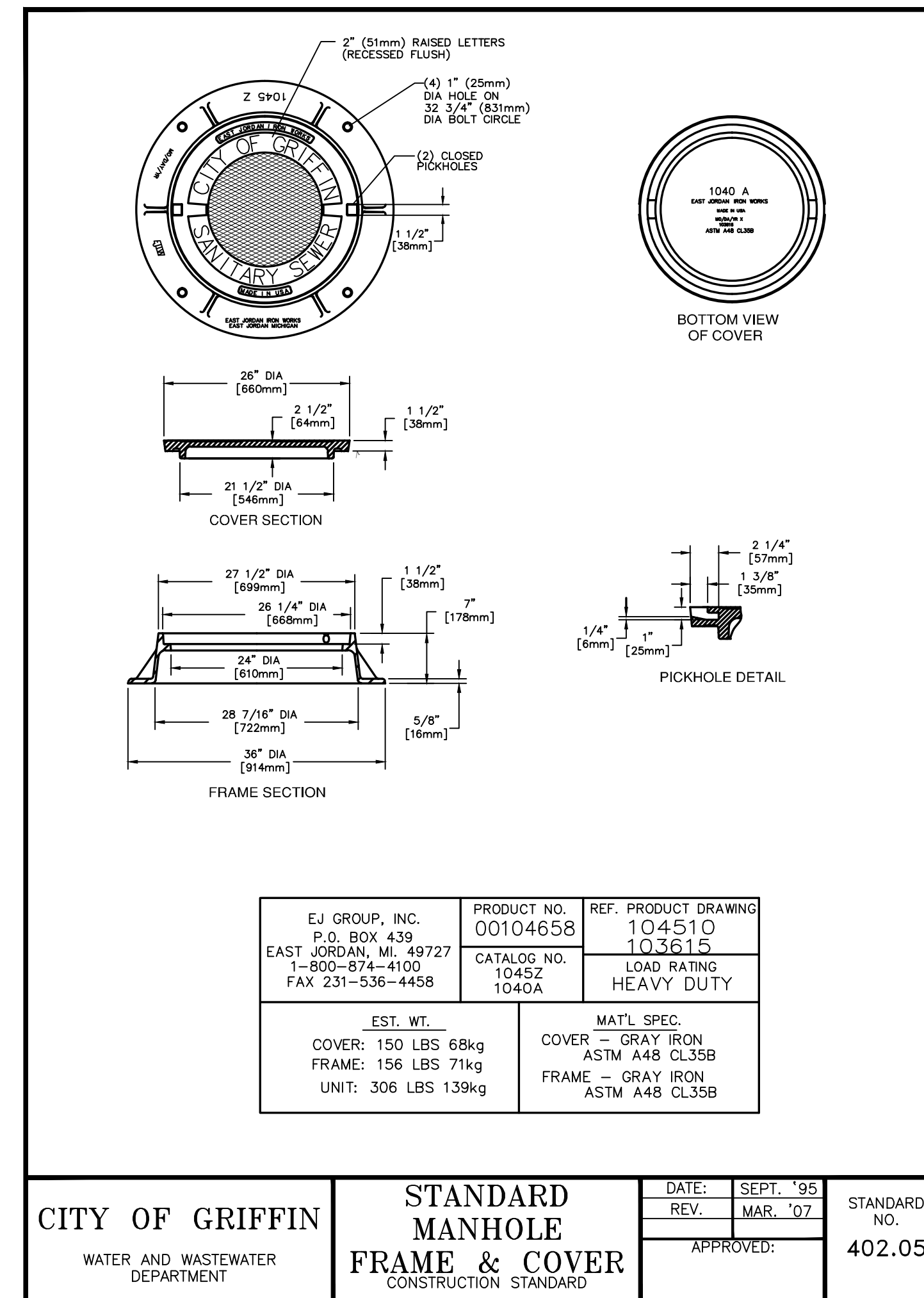
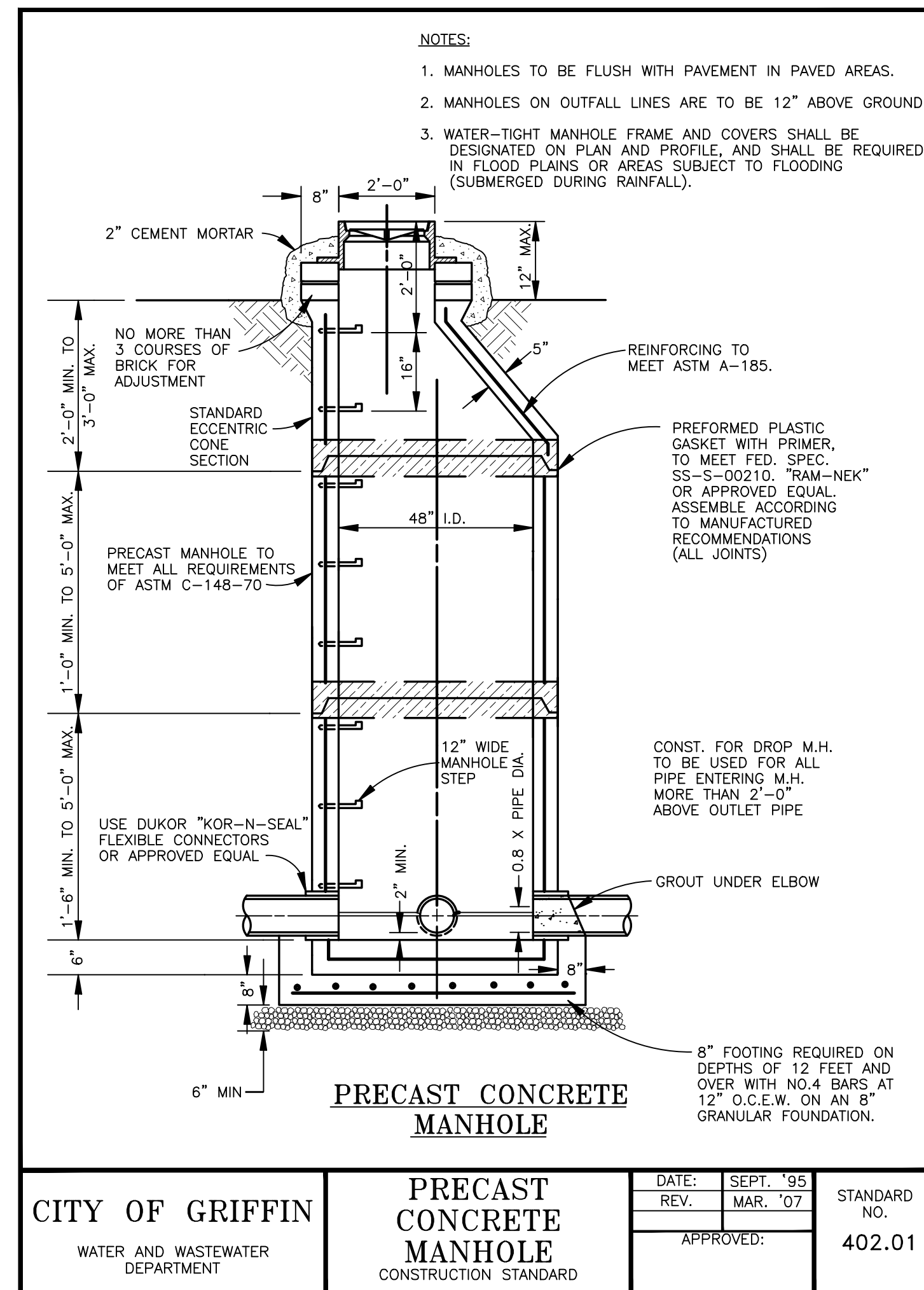
LICS #: PEF004167

GSWCC LEVEL II CERT. # 0000010472

Project No. 17106.00 Issue Date: FEB 2018
Drawn By: DMG Checked By: CNP

5
SHEET 5 OF 6

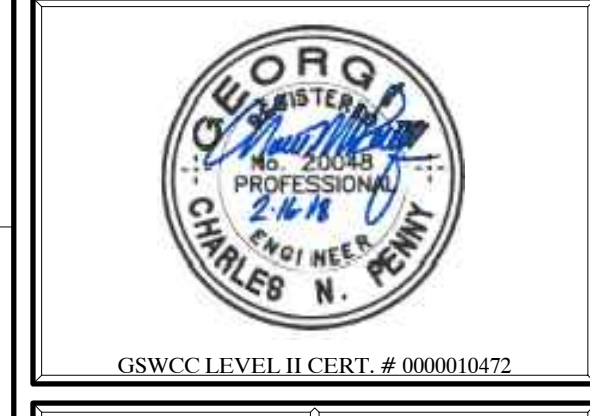
GEORGIA811
Utilities Protection Center, Inc.
Know what's below.
Call before you dig.



The client acknowledges that these documents are the work papers of Paragon Consulting Group, Inc. and are their instruments of professional service. These documents shall not be reused or modified in any way without the prior written authorization of Paragon Consulting Group, Inc.

SHEET:
CONSTRUCTION DETAILS

LICS #: PEF004167



Project No. 17106.00	Issue Date: FEB 2018
Drawn By: DMG	Checked By: CNP

No.	Revisions:	Date
1.	Re-Issue for Addendum #3	4/11/2018