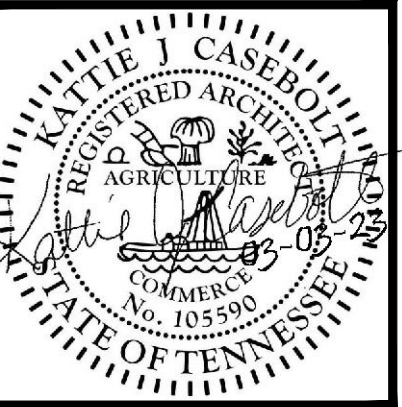




HOLSTON
ENGINEERING
INC.

301
Montgomery St.
Suite #4
Johnson City,
Tennessee
37604
(423)926-5991V
(423)926-9119F
holsteng@usit.net

This Document is an
Instrument of Service
and remains the
copyrighted property
of HOLSTON
ENGINEERING, INC.
This document shall
not be used or
copied/reproduced
without express
written permission
by HOLSTON
ENGINEERING, INC.



HVAC UPDATES/REPLACEMENTS FOR:
BLUFF CITY ELEMENTARY SCHOOL
282 J. FORREST THOMAS ST.
BLUFF CITY, TN 37618

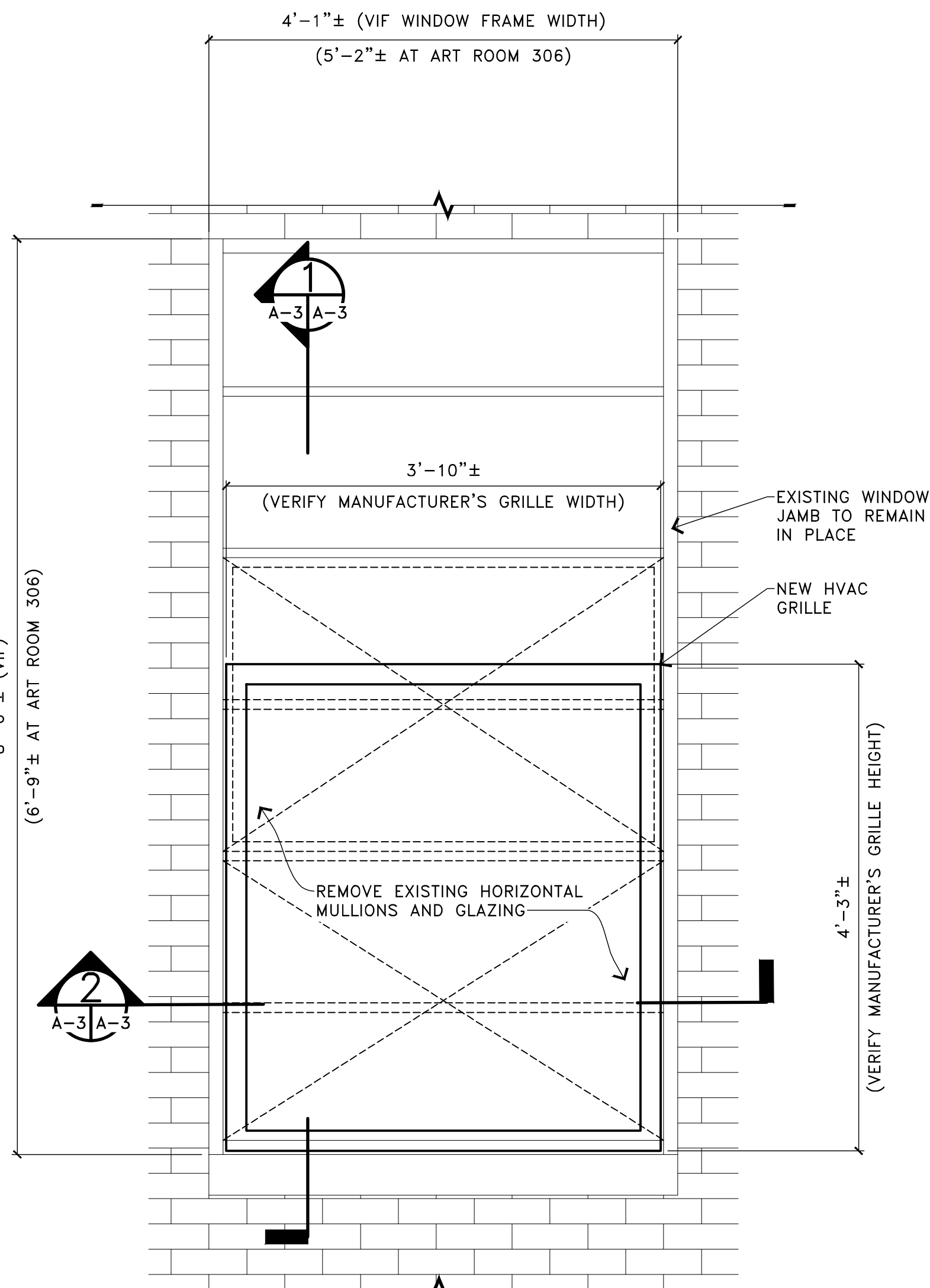
Pr. No. 22-030/23-014
Dr. by SC
Ck. by KC

A-3
3 of 3
PLOT DATE: 3/3/2023

COLLECTIVE
ARCHITECTURE COMPANY

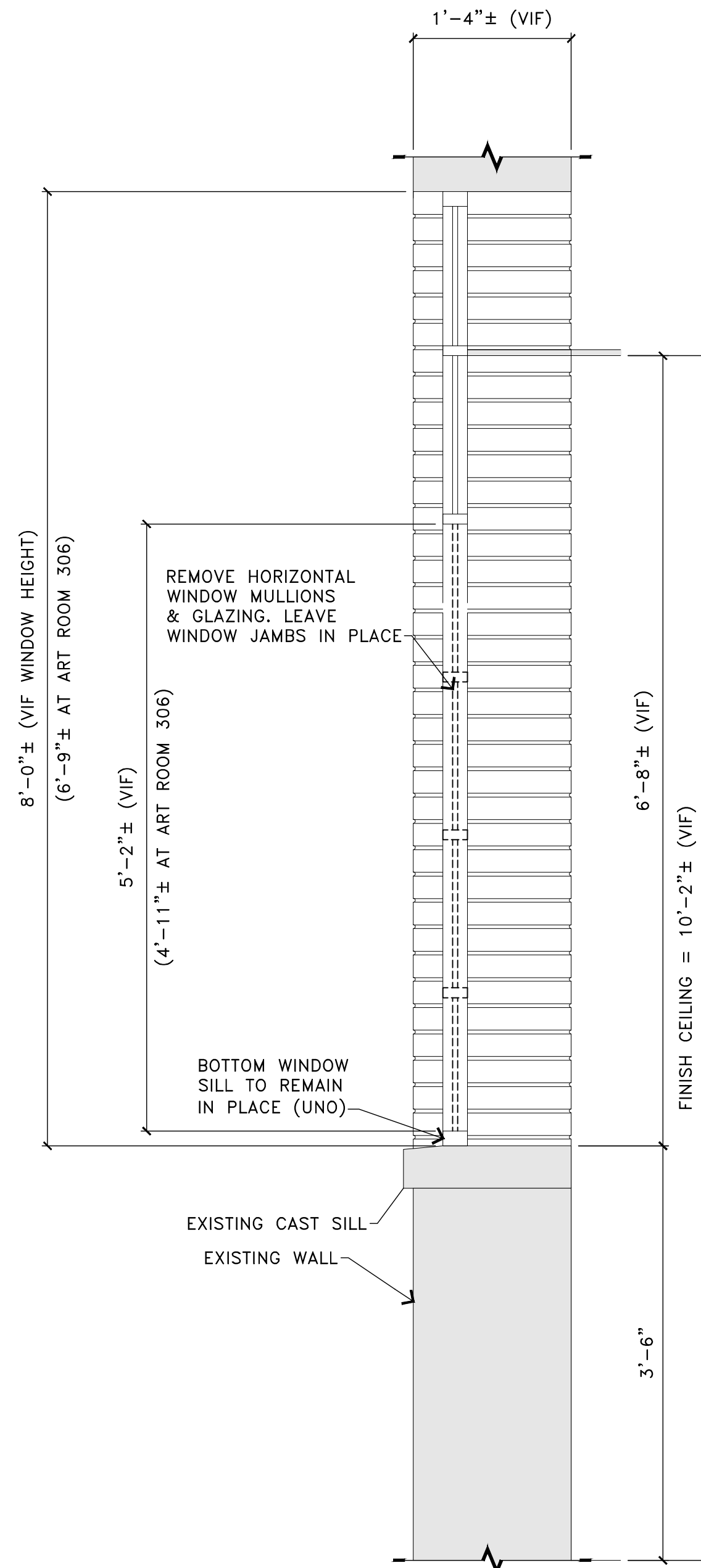
236 E. MARKET STREET
KINGSPORT, TN 37660
PH: 423.398.6200

MAR 30, 2023



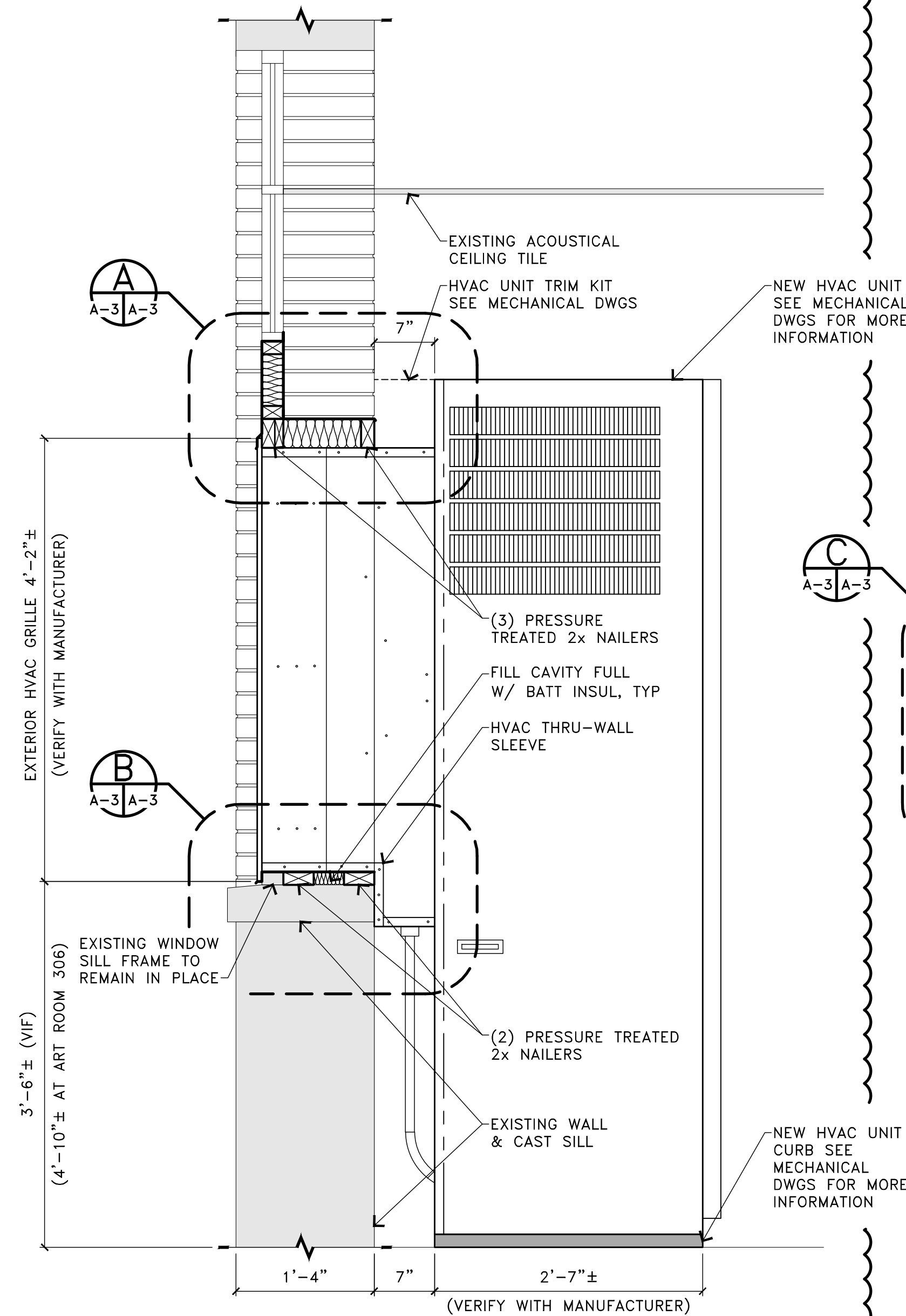
EXTERIOR WINDOW ELEVATION

SCALE: 1"=1'-0"



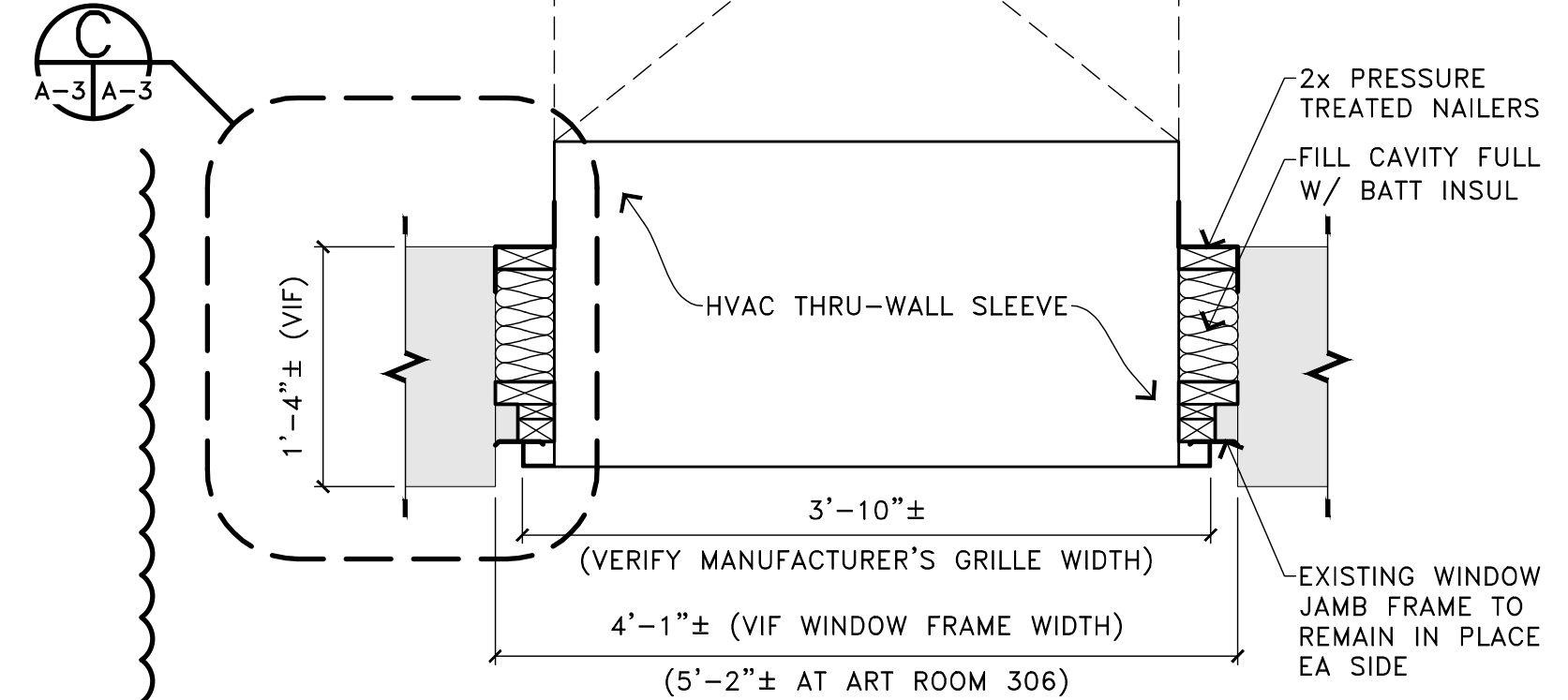
PARTIAL WINDOW DEMOLITION

SCALE: 1"=1'-0"



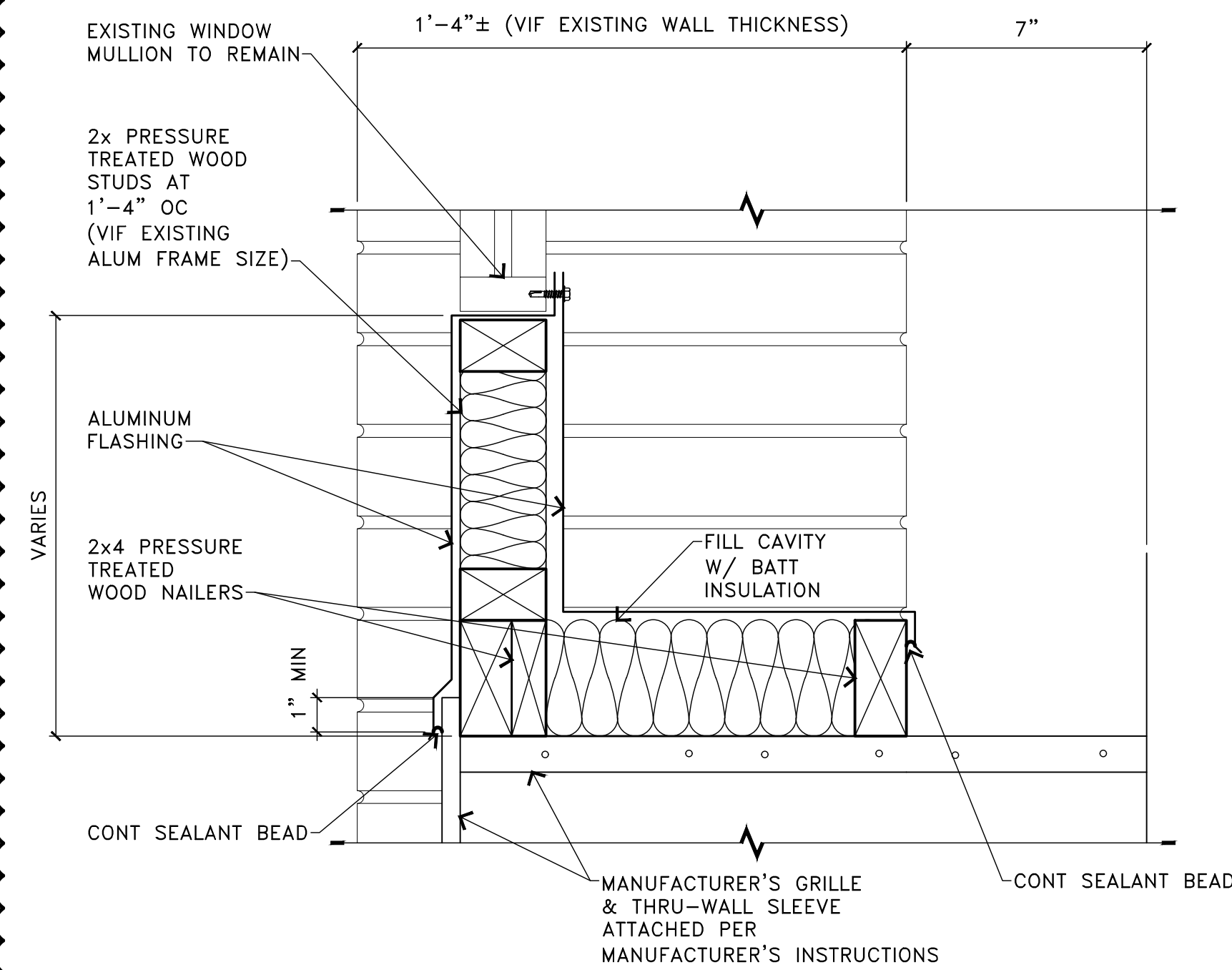
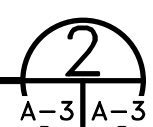
SECTION 1

SCALE: 1"=1'-0"



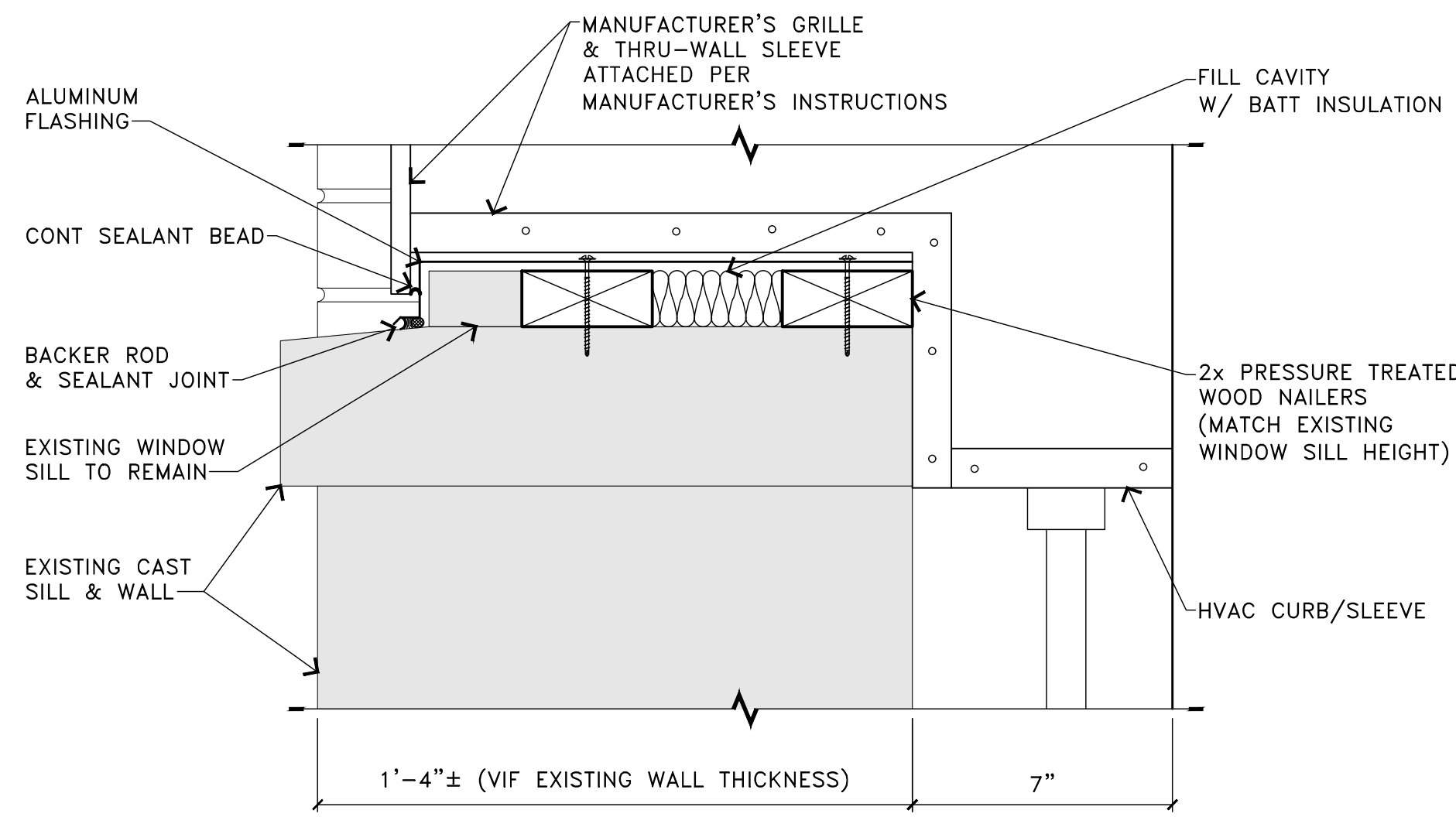
SECTION 2

SCALE: 1"=1'-0"



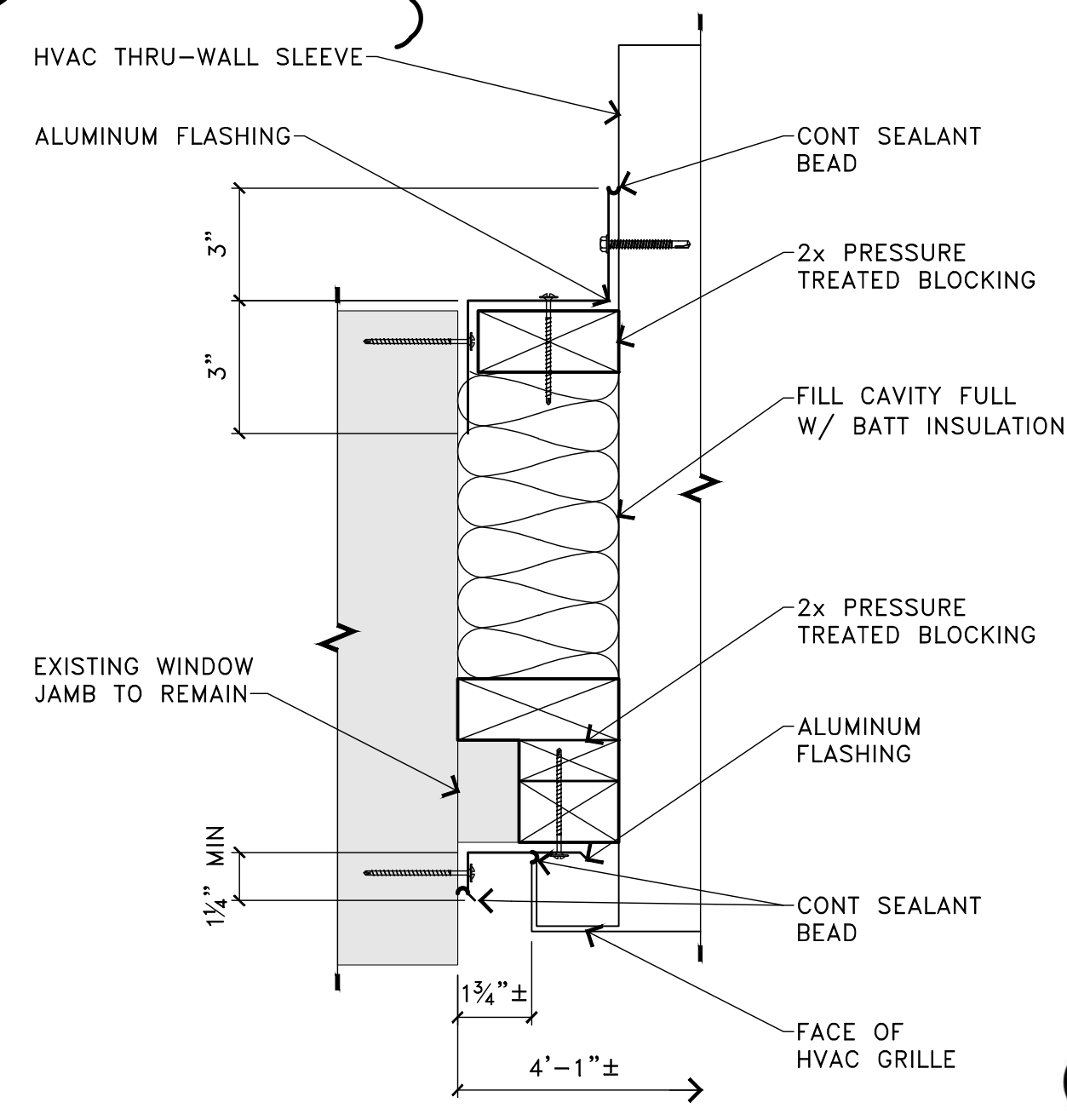
ENLARGED DETAIL A

SCALE: 3"=1'-0"



ENLARGED DETAIL B

SCALE: 3"=1'-0"



ENLARGED DETAIL C

SCALE: 3"=1'-0"

0 6" 1' 2'
SCALE: 1" = 1'-0"
0 2" 4" 8"
SCALE: 3" = 1'-0"