

## WWTP Walk-Thru Questions

1) *When will the projects around the WWTP be complete?*

The Southwest Crestview Bypass project is schedule to be completed in Sumer 2025. The WWTP Solids Handling project is scheduled to be completed in May 2024.

2) *What is included in the Solids Handing Project?*

The WWTP Solids Handing Project layout sheet is attached. (attachment 1)

3) *There were various different WWTP detail and permit questions.*

The Plant was built in 1994 and the current permit is attached. (attachment 2)

4) *How does the collection system connect to the WWTP?*

There are four lift stations that pump into the headworks. They are LS 6, 28, 69, and 76. A map of their locations are attached. Of the 83 lift stations in the collection system, only LS#28 (Lloyd St) is maintained by the operator of the WWTP. (attachment 3)

5) *What Scada is used in the City?*

The 83 lift stations in the city use Crystal Ball, Guarddog, and Panhandle alarm. The WWTP uses Panhandle alarm.

6) *Does the WWTP have seasonal DO issues?*

During the winter we are struggled with fecal counts. The current Solids Handling project should help alleviate this issue.

7) *What type of Land Application is used?*

Currently there are 176 acres of sprayfeild broken into 14 zones. There are five RIBs. We are in the design and pre-permitting process to add 14 acres of treatment wetlands.

8) *How many tons of solids are hauled each month?*

The plant generates about 38 tons of solids a month for a total of 454.84 in 2023 and are taken by Greensouth to their site in Alabama.

9) *How many digestors are there?*

Currently there are two operational digestors and two that have been built as part of the Solids Handing project. There will be four digestors and 2 belt presses when the project is complete.

10) *Do we have any reuse customers? What is our reused plan?*

Currently we have no reuse, however we are permitted for it. We have 90% plans for a reuse line along the Southwest Crestview Bypass to connect to Blackwater Golf Course.

11) How many monitoring wells are there? Where are they located?

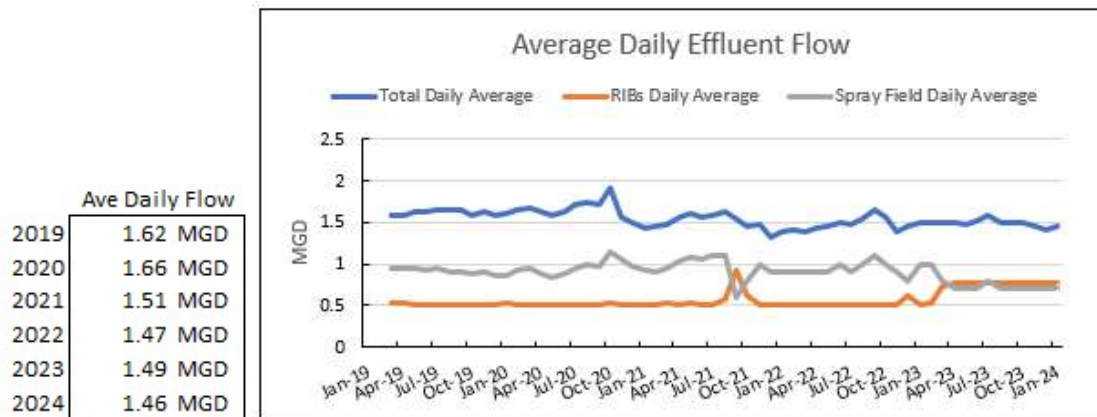
A map of the monitoring wells and surface water sites is attached. (attachment 4)

12) Who is responsible for baling hale?

The operator of the WWTP has had contracts with local farmers to do the cutting and baling. Currently the operator is doing the work and owns the baling equipment. The City does not own the equipment required.

13) What is the average daily flow to the plant?

The last five years of averages are shown below.



14) How is LS#28 at Llyod St maintained?

The site is used as a layout down for City equipment and materials. The property is maintained by the City and the triplex station is maintained by the WWTP operator. The station has three connected wetwells and three 100HP pumps. They pump into a 20” forcemain that rans along Lloyd and Arena to the WWTP.

## **Attachment 1: Solids Handling Project Overview**

# CRESTVIEW WWTP SOLIDS HANDLING IMPROVEMENTS



Prepared for the  
City of Crestview  
Crestview, Florida

Volume 3 of 3  
Drawings

For information regarding  
this project, contact:  
SCOTT JERNIGAN  
25 WEST CEDAR STREET,  
SUITE 350  
PENSACOLA, FL 32502  
PHONE: 850-941-7282

# Jacobs

Project No. D3403200

FEBRUARY 2021

90% DESIGN DOCUMENTS





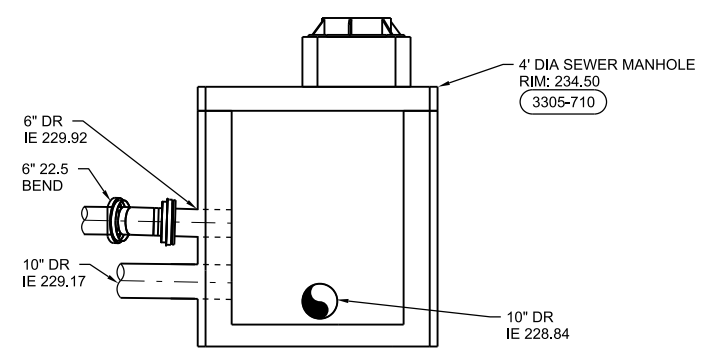


**GENERAL NOTES**

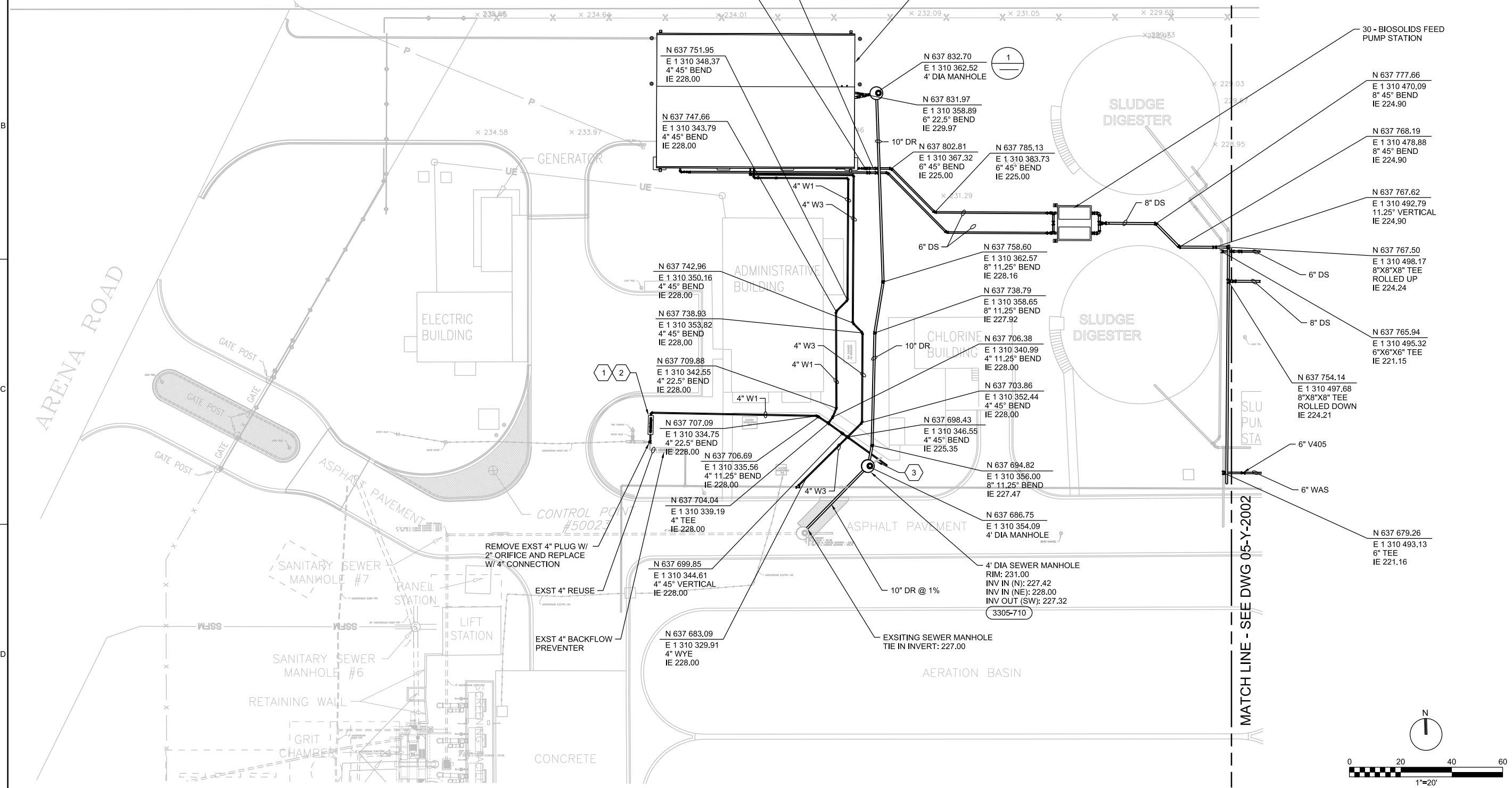
- UNLESS OTHERWISE NOTED, SEE PROCESS MECHANICAL FACILITY DRAWINGS FOR CONTINUATION OF PIPING.
- EXISTING PIPES ARE SHOWN BASED ON BEST AVAILABLE INFORMATION. FIELD VERIFY LOCATIONS AND DEPTHS OF THE EXISTING PIPES WHERE THE WORK OF THIS PROJECT TIES IN OR IS IMPACTED BY PRIOR TO ORDERING MATERIALS. ADJUST PIPING AND TIE-IN LOCATIONS AS NEEDED FOR PROPER INSTALLATION IN ACCORDANCE WITH THE SPECIFICATIONS.

**SHEET KEYNOTES**

- DEMOLISH EXISTING 2" W1 PIPING AND BACKFLOW AND REPLACE WITH A 4" W1 AND BACKFLOW ASSEMBLY.
- 4" V640 BACKFLOW PREVENTER WITH 4" V500 VALVES ON EACH SIDE OF THE BACKFLOW. INSTALL THE BACKFLOW ASSEMBLY WITHIN AN ENVIRONMENTAL ENCLOSURE.
- INTERCEPT THE EXISTING 4" DRAIN AND TIE INTO NEW MANHOLE, DEMOLISH THE REST OF THE 4" PIPE THAT EXTENDS TO THE EXISTING MANHOLE IN THE STREET.



**1 SECTION**  
1/2"=1'-0"



NO.	DATE	DSGN	DR	CHK	APVD
			STATMAN	KL DIAZ	R BOE

25 W CEDAR STREET, SUITE 350  
PENSACOLA, FLORIDA 32502  
EB25861

CRESTVIEW WWTP  
SOLIDS HANDLING IMPROVEMENTS  
CITY OF CRESTVIEW  
CRESTVIEW, FL

**JACOBS**

YARD PIPING  
**ENLARGED  
YARD PIPING PLAN**

VERIFY SCALE	BAR IS ONE INCH ON ORIGINAL DRAWING.
DATE	FEBRUARY 2020
PROJ	D3403200
DWG	05-Y-2001
SHEET	of

90% DESIGN DOCUMENTS





## Attachment 2: WWTP Permit

Application #	Project Name	Permit Type / Subtype	Application Action	Agency Action Date	Expiration Date
<a href="#">FLA010193-013-DW1R</a>	SUB MOD RERATE RIBS 2.65 MGD	<a href="#">DW1R RA</a>	MODIFICATION	12/9/2022	5/25/2025
<a href="#">FLA010193-012-DW1</a>	BIOSOLIDS IMPROVEMENTS	<a href="#">DW1 MR</a>	MODIFICATION	6/21/2021	5/25/2025
<a href="#">FLA010193-011-DWF</a>	SPRAYFIELD REDUCTION	<a href="#">DWF MM</a>	MODIFICATION	3/5/2021	3/4/2026
<a href="#">FLA010193-010-DW1P</a>	RNEW 2.75MGD WWTP PRT2+4 NEW 3	<a href="#">DW1P NRL</a>	RENEWAL	2/27/2015	5/25/2025

### Attachment 3: Major LS Map



## **Attachment 4: WWTP Monitoring Well Locations**

OMI CRESTVIEW SPRAYFIELD		
CV MW-1		N30 43.863 W86 35.876
CV MW-2		N30 43.463 W86 36.149
CV MW-3		N30 43.707 W86 35.732
CV MW-4		N30 43.456 W86 35.686
CV MW-5		N30 44.088 W86 35.813
CV MW-6		N30 43.400 W86 35.950
CV MW-7		N30 43.784 W86 36.151
CV MW-8		N30 44.078 W86 35.617
CV MW-9		N30 43.251 W86 36.118
CV MW-10		N30 43.384 W86 36.431
CV MW-11		N30 43.726 W86 36.111
CV MW-12		N30 43.803 W86 35.629
CV SW-1		N30 43.376 W86 36.264
CV SW-2		N30 43.377 W86 36.532
CV SW-3		N30 43.559 W86 35.661
CV SW-7		N30 44.527 W86 34.754
CV-SW-4		N30 43.142 W86 36.219
CV-SW-5		N30 43.452 W86 35.615
CV-SW-6		N30 43.560 W86 34.635

TOP OF CASING

171.62

140.92

191.04

138.60

232.55

224.03

171.99

229.45

145.09

138.73

NA

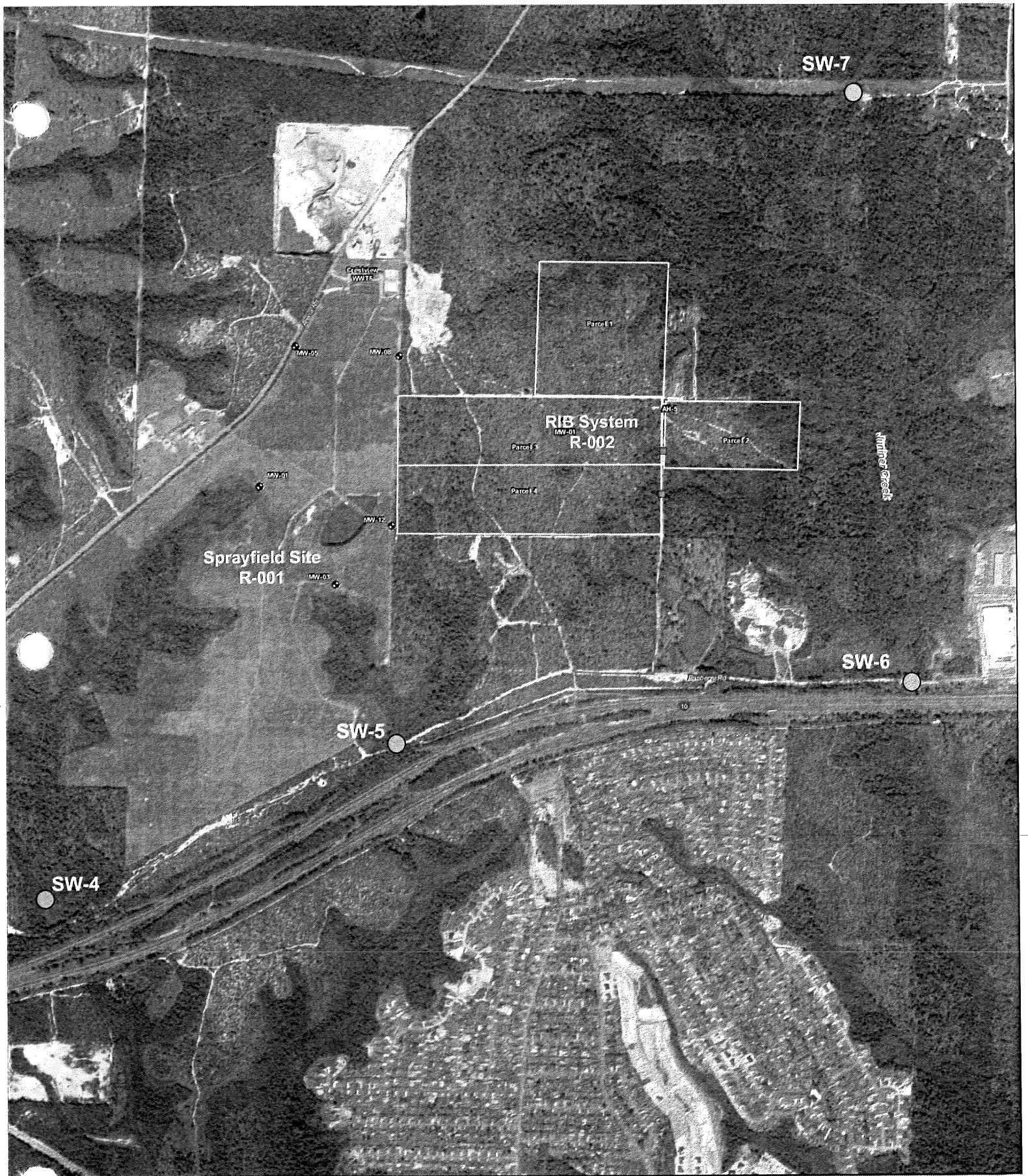
172.73







NOT in use 2014

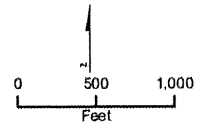
NOT in use 2014

NOT in use 2014

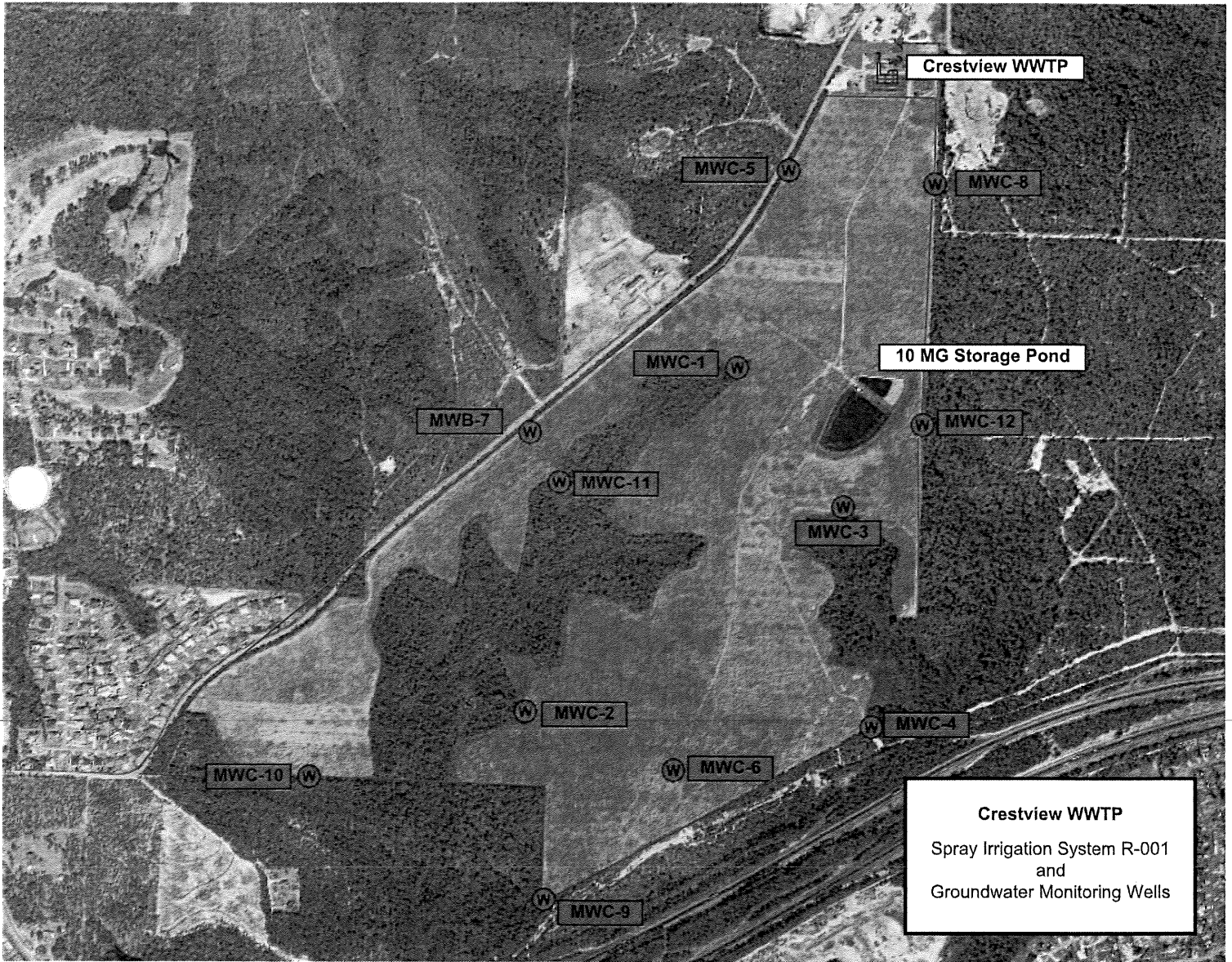




-  MW - Monitoring Well
-  Surface Water Sample
-  Culvert
-  Approximate Parcel Boundaries
-  Stream
-  Waterbody



**Figure 4**  
 Surface Water Sample Locations  
 RIB Site Investigation  
 City of Crestview, FL



Crestview WWTP

MWC-5

MWC-8

10 MG Storage Pond

MWC-1

MWB-7

MWC-12

MWC-11

MWC-3

MWC-2

MWC-4

MWC-10

MWC-6

**Crestview WWTP**  
Spray Irrigation System R-001  
and  
Groundwater Monitoring Wells

MWC-9