


ADDENDUM NO. 2

DATE: November 15, 2018
TO: All Proposers
FROM: Julie Smith Maxwell, Procurement Specialist
SUBJECT: Addendum No. 2 – Browser Based Transit Bus Fuel and Fluids Management System
PROPOSALS DUE: November 29, 2018, at 11:00:00 a.m. Eastern Time



This addendum is being published to respond to questions asked by potential proposers regarding the above-referenced Request for Proposals. This addendum becomes a part of the Contract Document and modifies the original specifications as noted.

Question 1: What is the size and the distance of the conduit from building to building?

Response: One unused 2 ½ inch (OD) underground conduit exists between the maintenance shop and service building. Length of this conduit from daylight end to daylight end is approximately 146 feet.

Question 2: Does the City want to host in the cloud?

Response: The City has no preference for location of the host server. It may be either on premises or in the cloud. If self-hosted, provide within the proposal server specifications (OS, memory, disk space, database, etc.).

Question 3: Is there a Veeder Root report we can print?

Response: See attached report.

Question 4: Are there drawings that show what reels will be included and which are not?

Response: See attached drawings. Five hose reel stations exist within the maintenance shop. Each station contains up to seven hoses with hand dispensers, three of which are for antifreeze, motor oil and transmission fluid. These hose reel stations are located overhead in bays 2, 4, 8 and 10 plus one station within the bay 11 below ground pit. The proposed control console installed within the center of the shop shall enable mechanics to activate hose reels for specific products (antifreeze, motor oil and transmission fluid) and track how much product is dispensed from each station. The system shall also track which mechanic activated hose reel products by utilizing existing employee ID badges and shall allow for simultaneous dispensing

from multiple hose reel stations. No other products other than antifreeze, motor oil and transmission fluid are to be controlled or tracked by the fuel management system.

Question 5: What is the implementation timeline for this project?

Response: The project shall be completed within 120 days following issuance of purchase order unless otherwise agreed upon by both parties.

Additional information:

1. Each of the two Veedor-Root consoles within shop office have had Ethernet IP communication cards (TC/IP cards) installed to allow for future connectivity to the City network.
2. The City will provide internet connection.
3. The City requests that all proposals include a drawing illustrating where proposers plan to install equipment, as well as, the power and network requirements.
4. Vendor shall be responsible for the removal and disposal of old Gasboy equipment.

END OF ADDENDUM NO. 2

Bugs Lot Vendor-Root Print Report

SYSTEM SETUP

NOV 13. 2018 2:28 PM

SYSTEM UNITS

U.S.
SYSTEM LANGUAGE
ENGLISH
SYSTEM DATE/TIME FORMAT
MON DD YYYY HH:MM:SS xM

KATTRANS WASH FAC
1222 5TH AVE
KNOXVILLE TN 37914
865-215-7385

SHIFT TIME 1 : 7:00 AM
SHIFT TIME 2 : 3:00 PM
SHIFT TIME 3 : 11:00 PM
SHIFT TIME 4 : DISABLED

TANK PER TST NEEDED WRN
DISABLED
TANK ANN TST NEEDED WRN
DISABLED

LINE RE-ENABLE METHOD
PASS LINE TEST

LINE PER TST NEEDED WRN
DISABLED
LINE ANN TST NEEDED WRN
DISABLED

PRINT TC VOLUMES
ENABLED

TEMP COMPENSATION
VALUE (DEG F): 60.0
STICK HEIGHT OFFSET
DISABLED
ULLAGE: 90%
DAYLIGHT SAVING TIME
ENABLED
START DATE
MAR WEEK 2 SUN
START TIME
2:00 AM
END DATE
NOV WEEK 1 SUN
END TIME
2:00 AM

SYSTEM SECURITY

CODE : 000000

TANK CHART SECURITY
DISABLED

CUSTOM ALARMS
DISABLED

SERVICE NOTICE
DISABLED

SYSTEM BEEPER
DISABLED

ISO 3166 COUNTRY
CODE:

MASS/DENSITY
DISABLED

FISCAL HEIGHT SECURITY
DISABLED

INVENTORY ALARMS UNITS

CONFIG: STANDARD
MAX OR LABEL: VOLUME
HIGH PRODUCT: % MAX
OVERFILL : % MAX
DELIV NEEDED: % MAX
LOW PRODUCT : VOLUME

ALARM REDUCTION
ENABLED

COMMUNICATIONS SETUP

PORT SETTINGS:

NONE FOUND

RS-232 END OF MESSAGE
DISABLED

IN-TANK SETUP

T 1:ATF
PRODUCT CODE : 1
THERMAL COEFF : .000470
TANK DIAMETER : 48.00
TANK PROFILE : 4 PTS
FULL VOL : 971
36.0 INCH VOL : 789
24.0 INCH VOL : 486
12.0 INCH VOL : 183

FLOAT SIZE: 3.0 IN.
WATER MINIMUM : 0.000

WATER WARNING : 2.5
HIGH WATER LIMIT: 2.5
WATER ALARM FILTER: LOW

MAX OR LABEL
VOLUME : 971

HIGH PRODUCT
% MAX : 95.0
(GALLONS) : 922

OVERFILL LIMIT
% MAX : 90.0
(GALLONS) : 874

DELIVERY LIMIT
% MAX : 15.0
(GALLONS) : 146

LOW PRODUCT
VOLUME : 150

LEAK ALARM LIMIT: 99
SUDDEN LOSS LIMIT: 99
TANK TILT : 0.00
PROBE OFFSET : 0.00

SIPHON MANIFOLDED TANKS
T#: NONE
LINE MANIFOLDED TANKS
T#: NONE

LEAK MIN PERIODIC: 0%
: 0

LEAK MIN ANNUAL : 0%
: 0

PERIODIC TEST TYPE
STANDARD

ANNUAL TEST FAIL
ALARM DISABLED

PERIODIC TEST FAIL
ALARM DISABLED

GROSS TEST FAIL
ALARM DISABLED

ANN TEST AVERAGING: OFF
PER TEST AVERAGING: OFF

TANK TEST NOTIFY: OFF

TNK TST SIPHON BREAK:OFF

DELIVERY DELAY : 5 MIN
PUMP THRESHOLD : 10.00%

T 2:MOTOR OIL2
PRODUCT CODE : 2
THERMAL COEFF : .000470
TANK DIAMETER : 71.25
TANK PROFILE : 4 PTS
FULL VOL : 3917
53.4 INCH VOL : 3151
35.6 INCH VOL : 1956
17.8 INCH VOL : 762

FLOAT SIZE: 4.0 IN.
WATER MINIMUM : 0.000

WATER WARNING : 2.5
HIGH WATER LIMIT: 2.5
WATER ALARM FILTER: LOW

MAX OR LABEL
VOLUME : 3917

HIGH PRODUCT
% MAX : 95.0
(GALLONS) : 3721

OVERFILL LIMIT
% MAX : 90.0
(GALLONS) : 3525

DELIVERY LIMIT
% MAX : 15.0
(GALLONS) : 588

LOW PRODUCT
VOLUME : 1000

LEAK ALARM LIMIT: 99
SUDDEN LOSS LIMIT: 99
TANK TILT : 0.00
PROBE OFFSET : -1.29

SIPHON MANIFOLDED TANKS
T#: NONE
LINE MANIFOLDED TANKS
T#: NONE

LEAK MIN PERIODIC: 0%
: 0

LEAK MIN ANNUAL : 0%
: 0

PERIODIC TEST TYPE
STANDARD

ANNUAL TEST FAIL
ALARM DISABLED

PERIODIC TEST FAIL
ALARM DISABLED

GROSS TEST FAIL
ALARM DISABLED

ANN TEST AVERAGING: OFF
PER TEST AVERAGING: OFF

TANK TEST NOTIFY: OFF

TNK TST SIPHON BREAK:OFF

DELIVERY DELAY : 5 MIN
PUMP THRESHOLD : 10.00%

T 3:MOTOR OIL
PRODUCT CODE : 3
THERMAL COEFF : .000470
TANK DIAMETER : 71.00
TANK PROFILE : 4 PTS
FULL VOL : 3914
53.3 INCH VOL : 3151
35.5 INCH VOL : 1947
17.8 INCH VOL : 762

FLOAT SIZE: 4.0 IN.
WATER MINIMUM : 0.000

WATER WARNING : 2.5
HIGH WATER LIMIT: 2.5
WATER ALARM FILTER: LOW

MAX OR LABEL
VOLUME : 3914

HIGH PRODUCT
% MAX : 95.0
(GALLONS) : 3718

OVERFILL LIMIT
% MAX : 90.0
(GALLONS) : 3523

DELIVERY LIMIT
% MAX : 15.0
(GALLONS) : 587

LOW PRODUCT
VOLUME : 900

LEAK ALARM LIMIT: 99
SUDDEN LOSS LIMIT: 99
TANK TILT : 0.00
PROBE OFFSET : 0.00

SIPHON MANIFOLDED TANKS
T#: NONE
LINE MANIFOLDED TANKS
T#: NONE

LEAK MIN PERIODIC: 0%
: 0

PERIODIC TEST TYPE
STANDARD

PERIODIC TEST FAIL
ALARM DISABLED

GROSS TEST FAIL
ALARM DISABLED

PER TEST AVERAGING: OFF

TANK TEST NOTIFY: OFF

TNK TST SIPHON BREAK:OFF

DELIVERY DELAY : 5 MIN
PUMP THRESHOLD : 10.00%

T 4:UNLEADED
PRODUCT CODE : 4
THERMAL COEFF : .000700
TANK DIAMETER : 92.00
TANK PROFILE : 4 PTS
FULL VOL : 5929
69.0 INCH VOL : 4854
46.0 INCH VOL : 2965
23.0 INCH VOL : 1076

T 5:DIESEL
PRODUCT CODE : 5
THERMAL COEFF : .000450
TANK DIAMETER : 119.50
TANK PROFILE : 4 PTS
FULL VOL : 20168
89.6 INCH VOL : 16370
59.8 INCH VOL : 10115
29.9 INCH VOL : 3832

T 6:DIESEL
PRODUCT CODE : 6
THERMAL COEFF : .000450
TANK DIAMETER : 119.50
TANK PROFILE : 4 PTS
FULL VOL : 20168
89.6 INCH VOL : 16370
59.8 INCH VOL : 10115
29.9 INCH VOL : 3832

FLOAT SIZE: 4.0 IN.
WATER MINIMUM : 0.000

FLOAT SIZE: 4.0 IN.
WATER MINIMUM : 0.000

FLOAT SIZE: 4.0 IN.
WATER MINIMUM : 0.000

WATER WARNING : 2.0
HIGH WATER LIMIT: 2.5
WATER ALARM FILTER: LOW

WATER WARNING : 2.0
HIGH WATER LIMIT: 2.5
WATER ALARM FILTER: LOW

WATER WARNING : 2.0
HIGH WATER LIMIT: 2.5
WATER ALARM FILTER: LOW

MAX OR LABEL
VOLUME : 5929

MAX OR LABEL
VOLUME : 20168

MAX OR LABEL
VOLUME : 20168

HIGH PRODUCT
% MAX : 95.0
(GALLONS) : 5633

HIGH PRODUCT
% MAX : 95.0
(GALLONS) : 19160

HIGH PRODUCT
% MAX : 95.0
(GALLONS) : 19160

OVERFILL LIMIT
% MAX : 90.0
(GALLONS) : 5336

OVERFILL LIMIT
% MAX : 90.0
(GALLONS) : 18151

OVERFILL LIMIT
% MAX : 90.0
(GALLONS) : 18151

DELIVERY LIMIT
% MAX : 15.0
(GALLONS) : 889

DELIVERY LIMIT
% MAX : 15.0
(GALLONS) : 3025

DELIVERY LIMIT
% MAX : 15.0
(GALLONS) : 3025

LOW PRODUCT
VOLUME : 900

LOW PRODUCT
VOLUME : 3000

LOW PRODUCT
VOLUME : 3000

LEAK ALARM LIMIT: 99
SUDDEN LOSS LIMIT: 99
TANK TILT : 0.00
PROBE OFFSET : -0.80

LEAK ALARM LIMIT: 99
SUDDEN LOSS LIMIT: 99
TANK TILT : 0.00
PROBE OFFSET : -1.05

LEAK ALARM LIMIT: 99
SUDDEN LOSS LIMIT: 99
TANK TILT : 0.00
PROBE OFFSET : 0.00

SIPHON MANIFOLDED TANKS
T#: NONE
LINE MANIFOLDED TANKS
T#: NONE

SIPHON MANIFOLDED TANKS
T#: NONE
LINE MANIFOLDED TANKS
T#: NONE

SIPHON MANIFOLDED TANKS
T#: NONE
LINE MANIFOLDED TANKS
T#: NONE

LEAK MIN PERIODIC: 0%
: 0

LEAK MIN PERIODIC: 0%
: 0

LEAK MIN PERIODIC: 0%
: 0

LEAK MIN ANNUAL : 0%
: 0

LEAK MIN ANNUAL : 0%
: 0

LEAK MIN ANNUAL : 0%
: 0

PERIODIC TEST TYPE
STANDARD

PERIODIC TEST TYPE
STANDARD

PERIODIC TEST TYPE
STANDARD

ANNUAL TEST FAIL
ALARM DISABLED

ANNUAL TEST FAIL
ALARM DISABLED

ANNUAL TEST FAIL
ALARM DISABLED

PERIODIC TEST FAIL
ALARM DISABLED

PERIODIC TEST FAIL
ALARM DISABLED

PERIODIC TEST FAIL
ALARM DISABLED

GROSS TEST FAIL
ALARM DISABLED

GROSS TEST FAIL
ALARM DISABLED

GROSS TEST FAIL
ALARM DISABLED

ANN TEST AVERAGING: OFF
PER TEST AVERAGING: OFF

ANN TEST AVERAGING: OFF
PER TEST AVERAGING: OFF

ANN TEST AVERAGING: OFF
PER TEST AVERAGING: OFF

TANK TEST NOTIFY: OFF

TANK TEST NOTIFY: OFF

TANK TEST NOTIFY: OFF

TNK TST SIPHON BREAK:OFF

TNK TST SIPHON BREAK:OFF

TNK TST SIPHON BREAK:OFF

DELIVERY DELAY : 5 MIN
PUMP THRESHOLD : 10.00%

DELIVERY DELAY : 5 MIN
PUMP THRESHOLD : 10.00%

DELIVERY DELAY : 5 MIN
PUMP THRESHOLD : 10.00%

T 7:DIESEL
PRODUCT CODE : 7
THERMAL COEFF : .000450
TANK DIAMETER : 119.50
TANK PROFILE : 4 PTS
FULL VOL : 20168
89.6 INCH VOL : 16370
59.8 INCH VOL : 10115
29.9 INCH VOL : 3832

FLOAT SIZE: 4.0 IN.
WATER MINIMUM : 0.000

WATER WARNING : 2.0
HIGH WATER LIMIT: 2.5
WATER ALARM FILTER: LOW

MAX OR LABEL
VOLUME : 20168

HIGH PRODUCT
% MAX : 95.0
(GALLONS) : 19160

OVERFILL LIMIT
% MAX : 90.0
(GALLONS) : 18151

DELIVERY LIMIT
% MAX : 15.0
(GALLONS) : 3025

LOW PRODUCT
VOLUME : 3000

LEAK ALARM LIMIT: 99
SUDDEN LOSS LIMIT: 99
TANK TILT : 0.00
PROBE OFFSET : -0.77

SIPHON MANIFOLDED TANKS
T#: NONE
LINE MANIFOLDED TANKS
T#: NONE

LEAK MIN PERIODIC: 0%
: 0

LEAK MIN ANNUAL : 0%
: 0

PERIODIC TEST TYPE
STANDARD

ANNUAL TEST FAIL
ALARM DISABLED

PERIODIC TEST FAIL
ALARM DISABLED

GROSS TEST FAIL
ALARM DISABLED

ANN TEST AVERAGING: OFF
PER TEST AVERAGING: OFF

TANK TEST NOTIFY: OFF

TNK TST SIPHON BREAK:OFF

DELIVERY DELAY : 5 MIN
PUMP THRESHOLD : 10.00%

LEAK TEST METHOD

TEST CSLD : ALL TANK
Pd = 95%
CLIMATE FACTOR:MODERATE

REPORT ONLY:
DISABLED

TST EARLY STOP:DISABLED

LEAK TEST REPORT FORMAT
NORMAL

LIQUID SENSOR SETUP

L 1:ATF
TRI-STATE (SINGLE FLOAT)
CATEGORY : ANNULAR SPACE

L 2:ANTIFREEZE
TRI-STATE (SINGLE FLOAT)
CATEGORY : ANNULAR SPACE

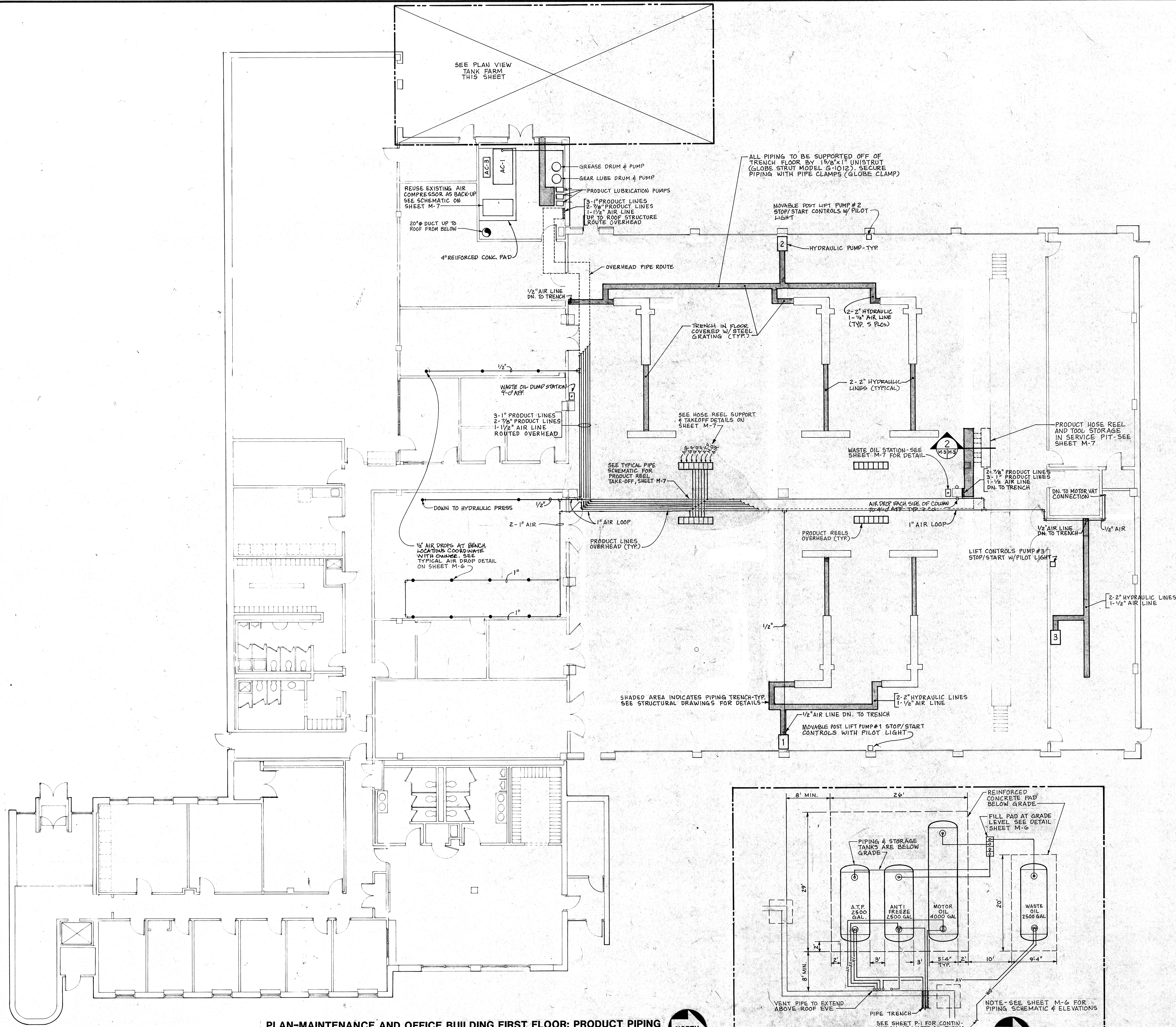
L 3:MOTOR OIL
TRI-STATE (SINGLE FLOAT)
CATEGORY : ANNULAR SPACE

L 4:UNLEADED
TRI-STATE (SINGLE FLOAT)
CATEGORY : ANNULAR SPACE

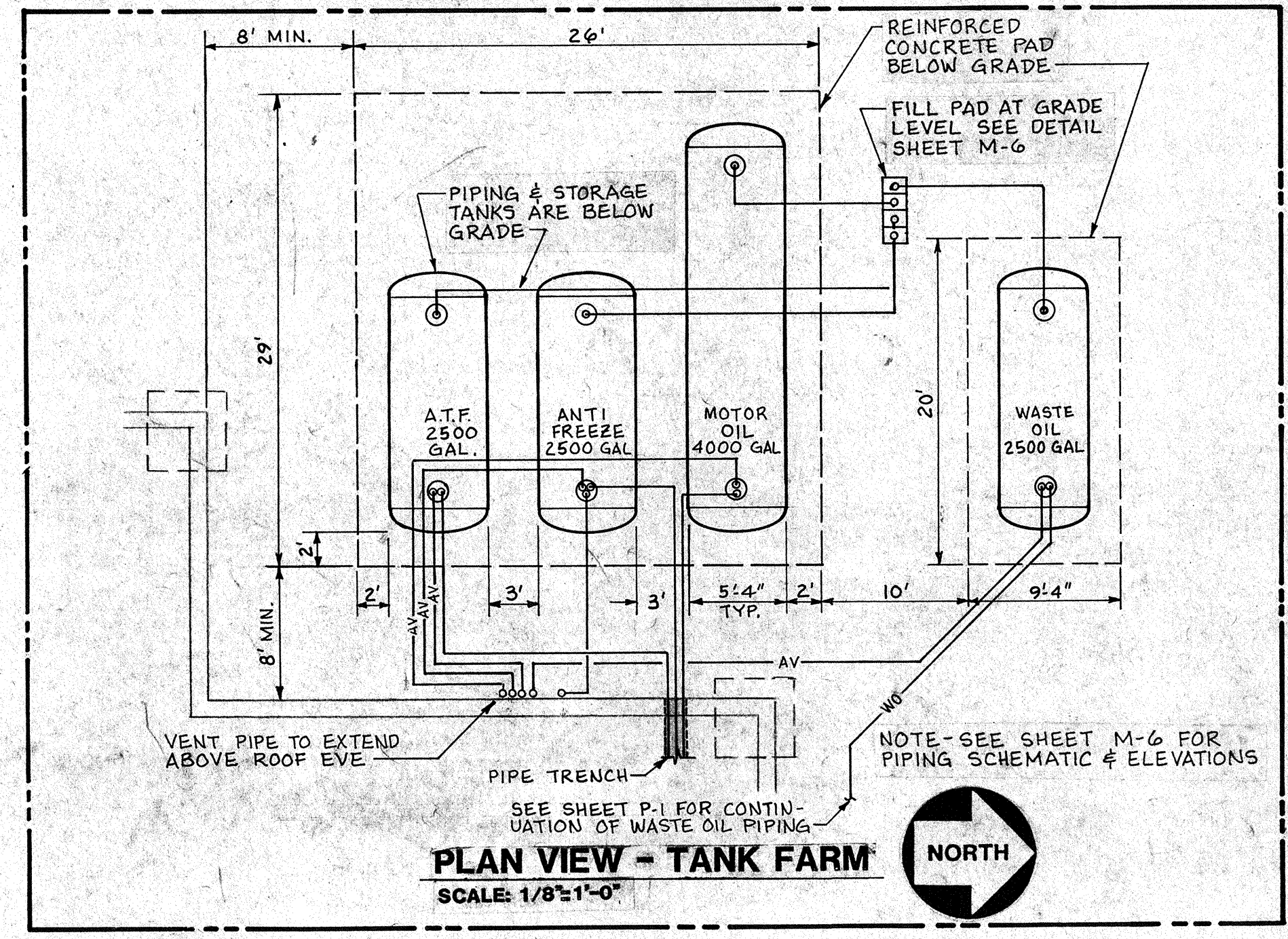
L 5:DIESEL NO.5
TRI-STATE (SINGLE FLOAT)
CATEGORY : ANNULAR SPACE

L 6:DIESEL NO.6
TRI-STATE (SINGLE FLOAT)
CATEGORY : ANNULAR SPACE

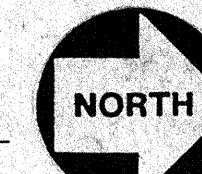
L 7:DIESEL NO.7
TRI-STATE (SINGLE FLOAT)
CATEGORY : ANNULAR SPACE



PLAN-MAINTENANCE AND OFFICE BUILDING FIRST FLOOR: PRODUCT PIPING
 SCALE: 1/8" = 1'-0"



PLAN VIEW - TANK FARM
 SCALE: 1/8" = 1'-0"



Barge Waggoner Summer and Cannon
 Engineers, Architects, Planners, Landscape Architects and Surveyors

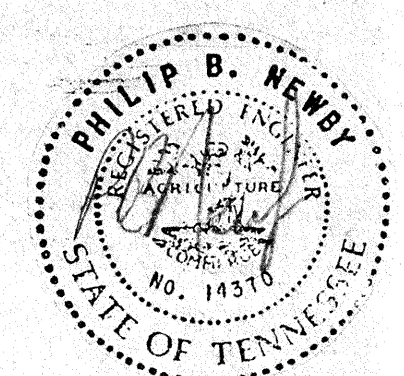
Duchschetter Oberst Design, P.C.
 2320 Elmwood Avenue
 Buffalo, N.Y. 14217
 716-873-9334

PLAN-MAINTENANCE & OFFICE BLDG.: PRODUCT PIPING

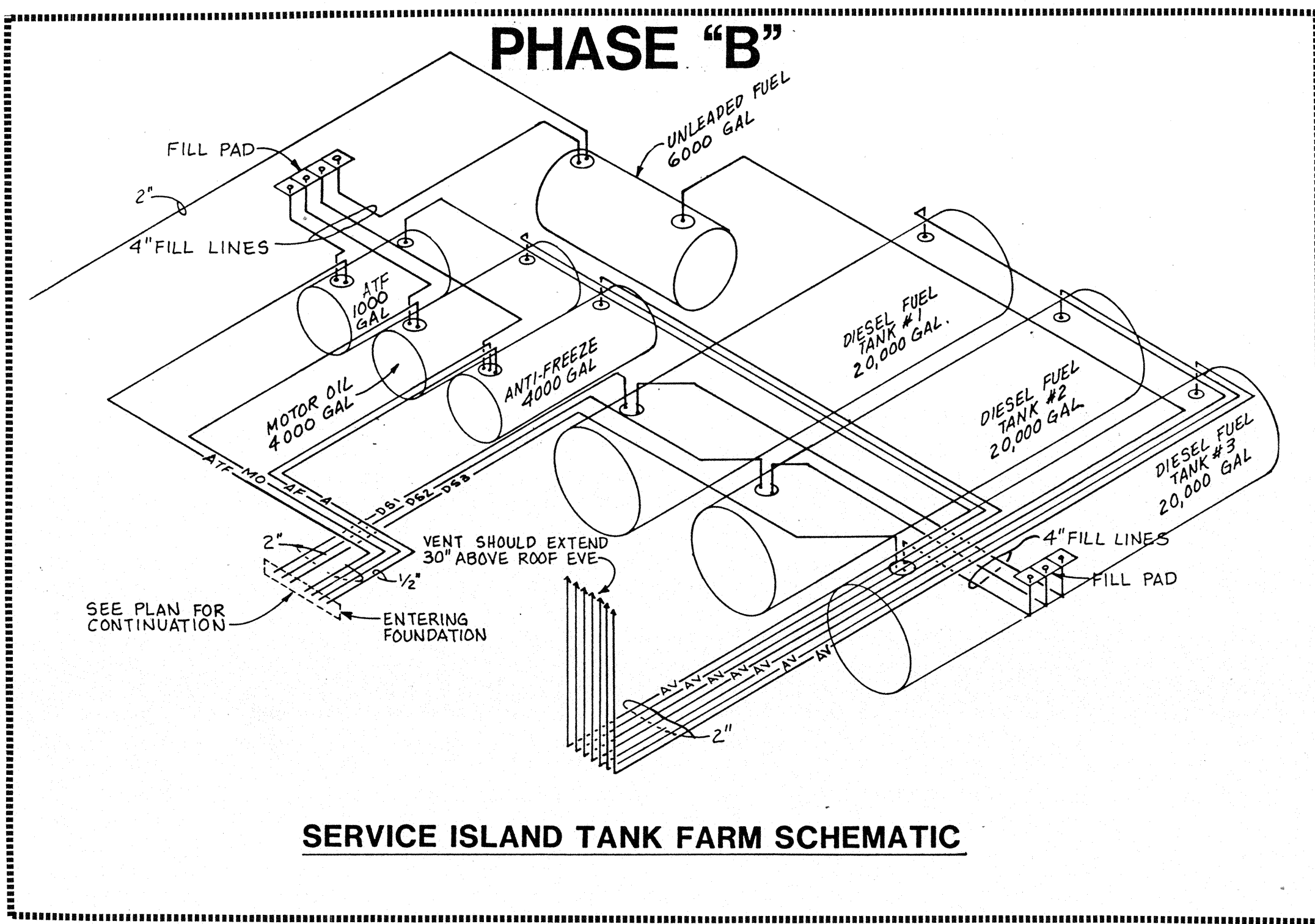
K-TRANS MAINTENANCE AND OFFICE FACILITY
 1135 MAGNOLIA AVENUE
 KNOXVILLE, TENNESSEE

DR	CHK	DATE	DESCRIPTION
DAT	PBN	10/14/87	ORIGINAL ISSUE
DAT	PBN	10/28/87	REISSUED FOR BID

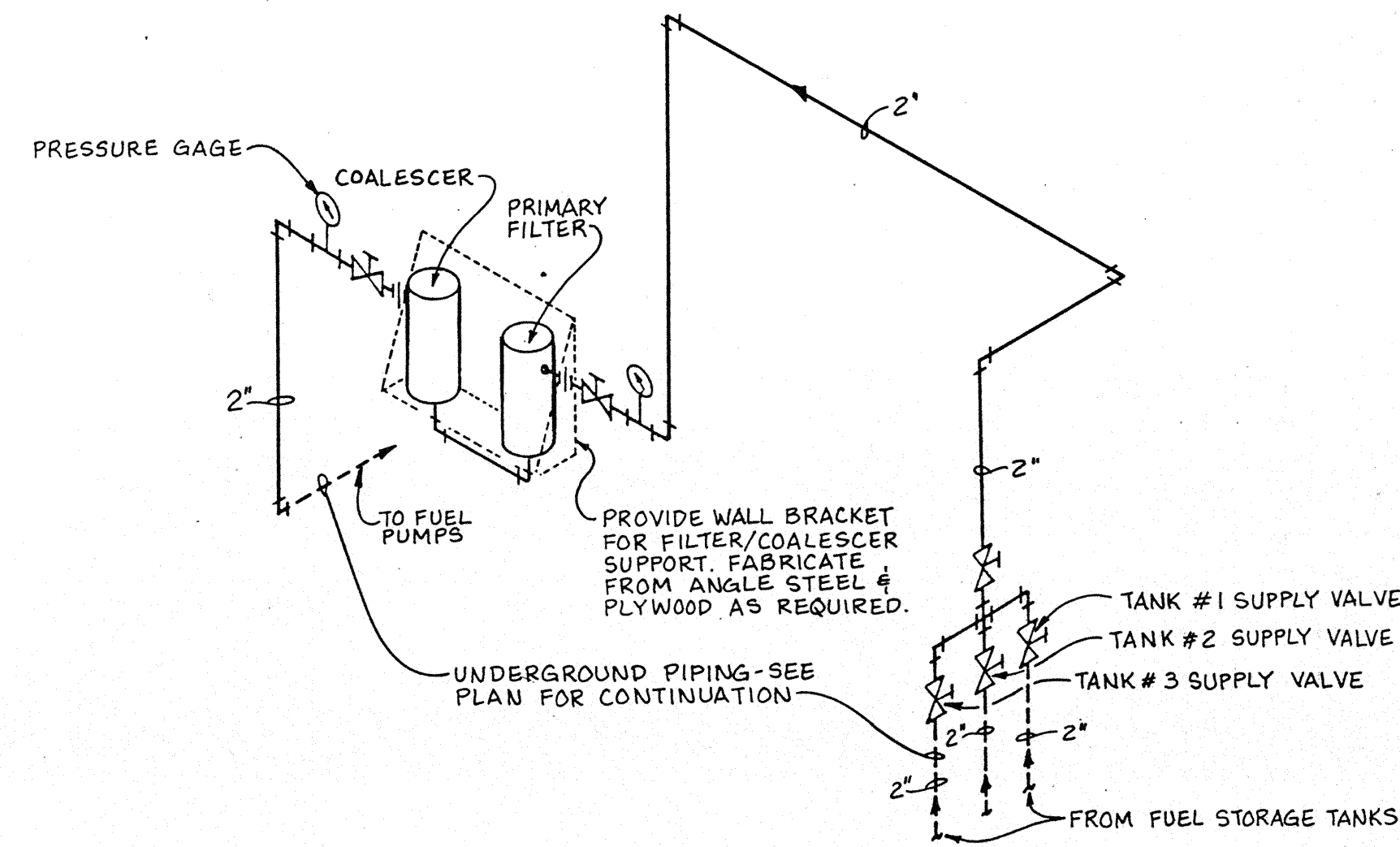
M-3
 FILE NO 10195-15



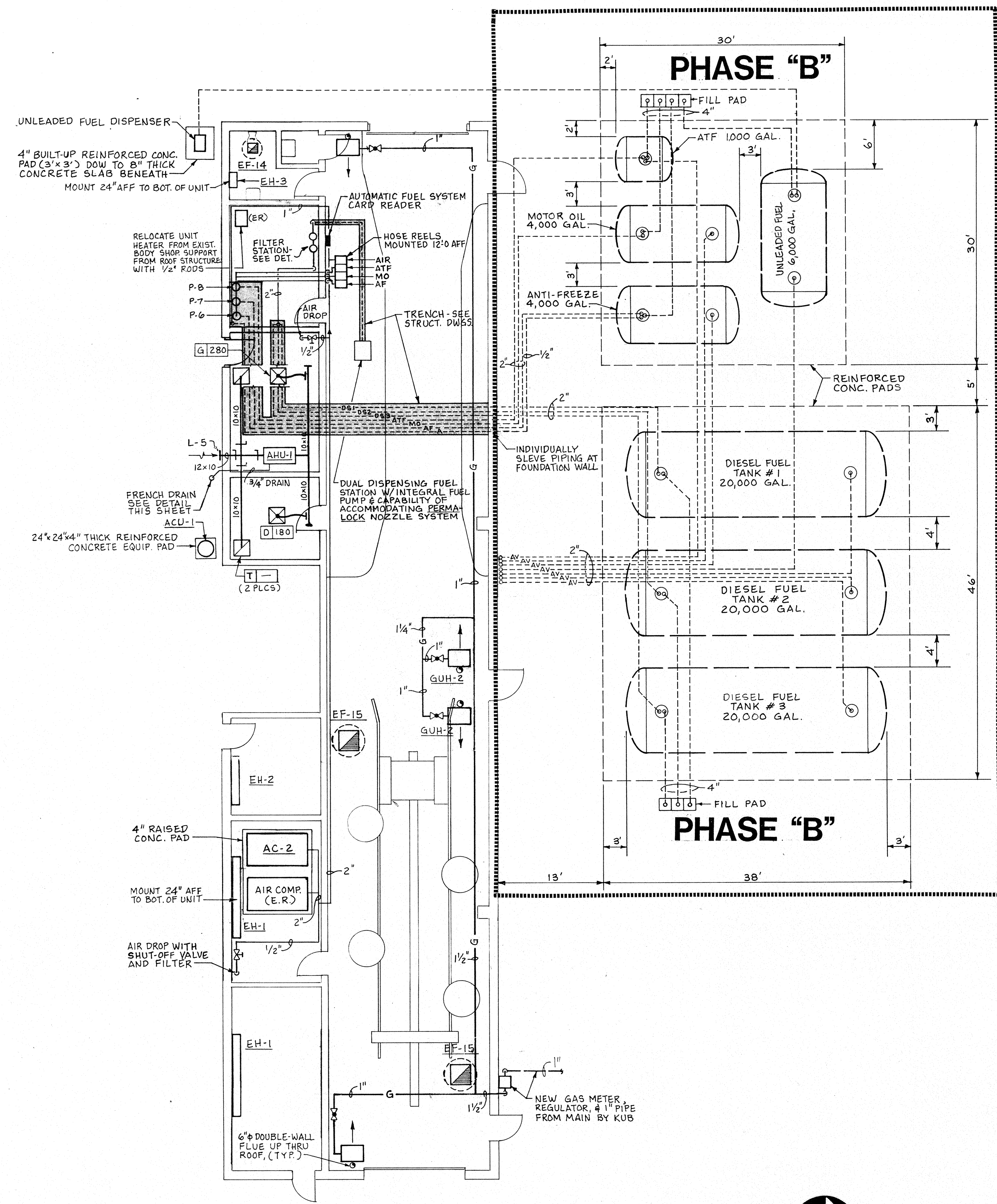
10/17/87



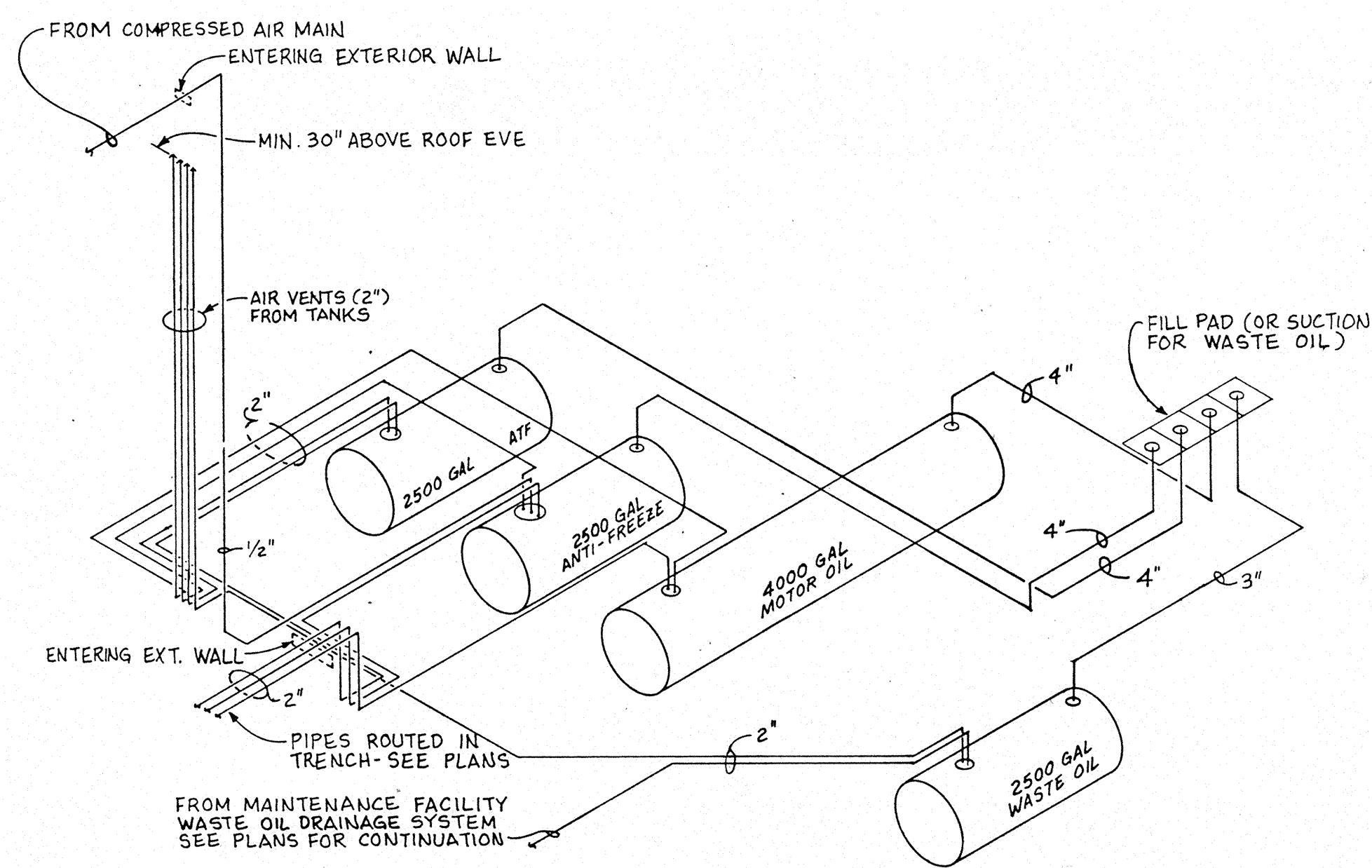
SERVICE ISLAND TANK FARM SCHEMATIC



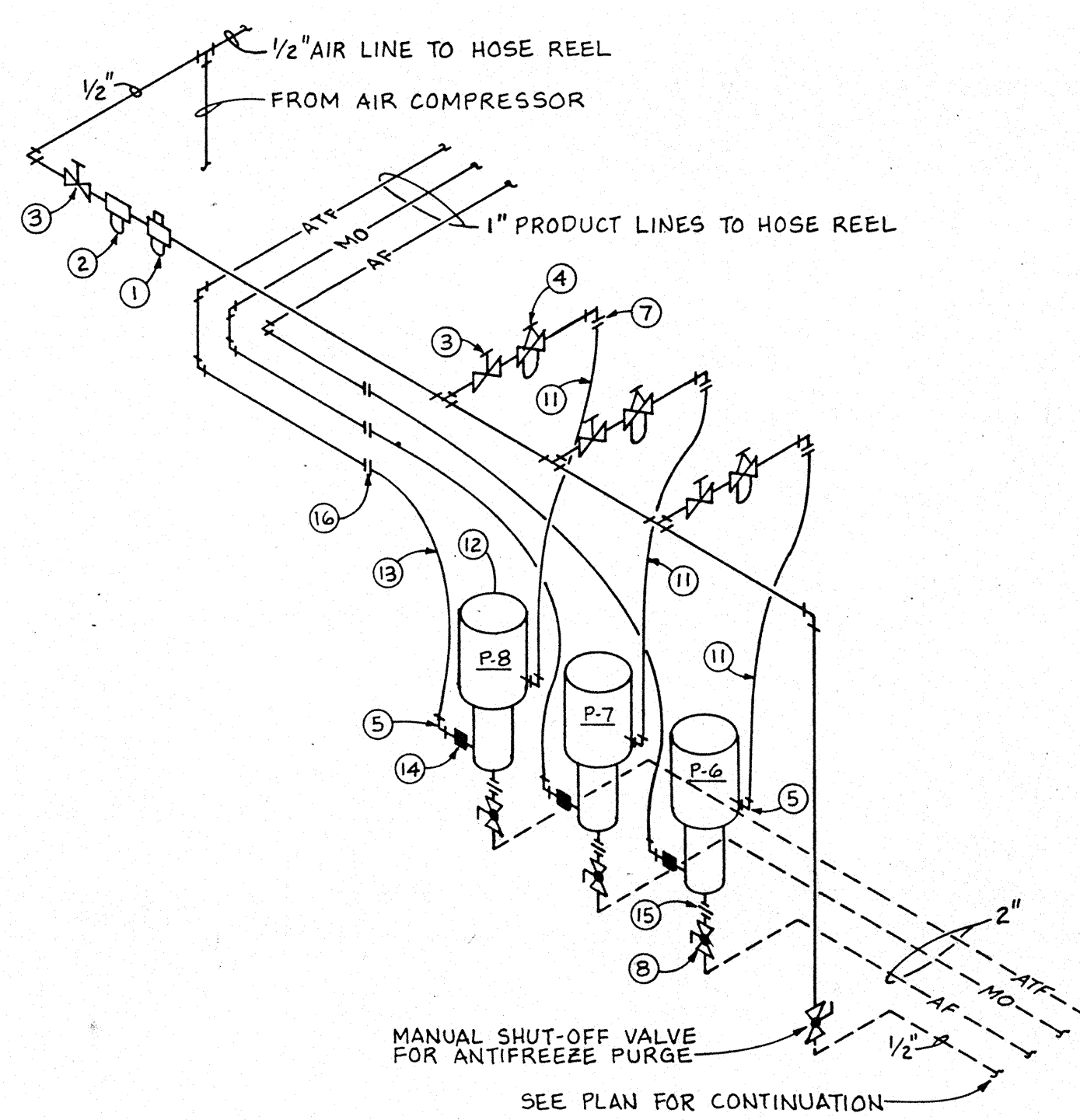
FUEL FILTERING STATION SCHEMATIC



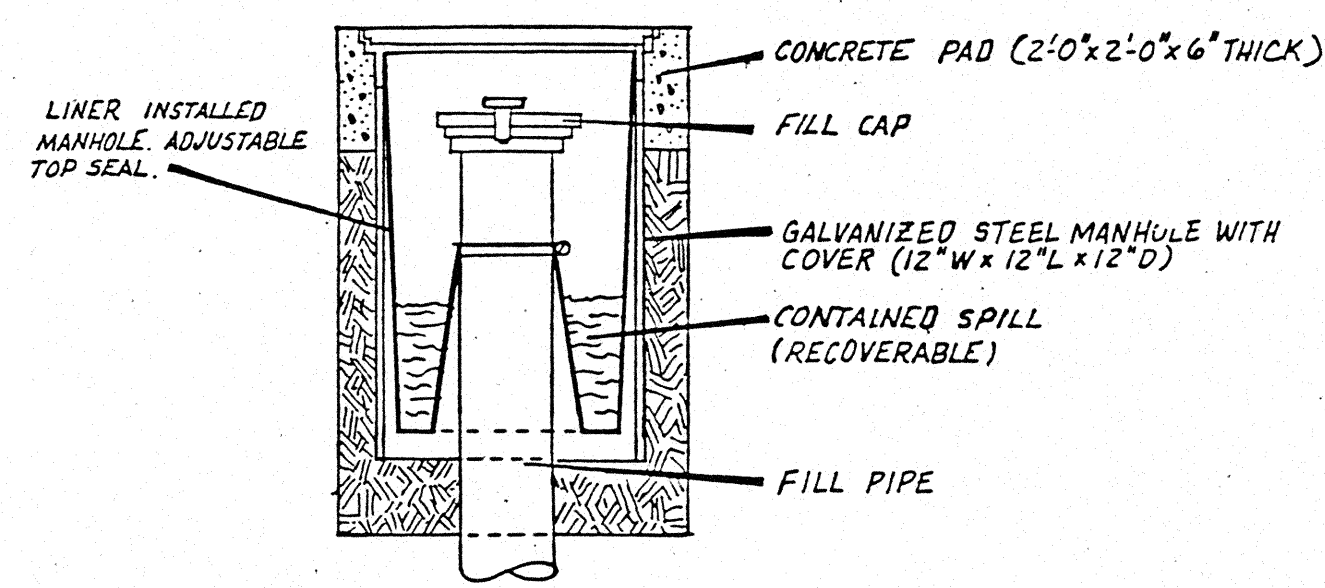
PLAN-SERVICE BUILDING: PRODUCT PIPING AND HVAC
SCALE: 1/8" = 1'-0"



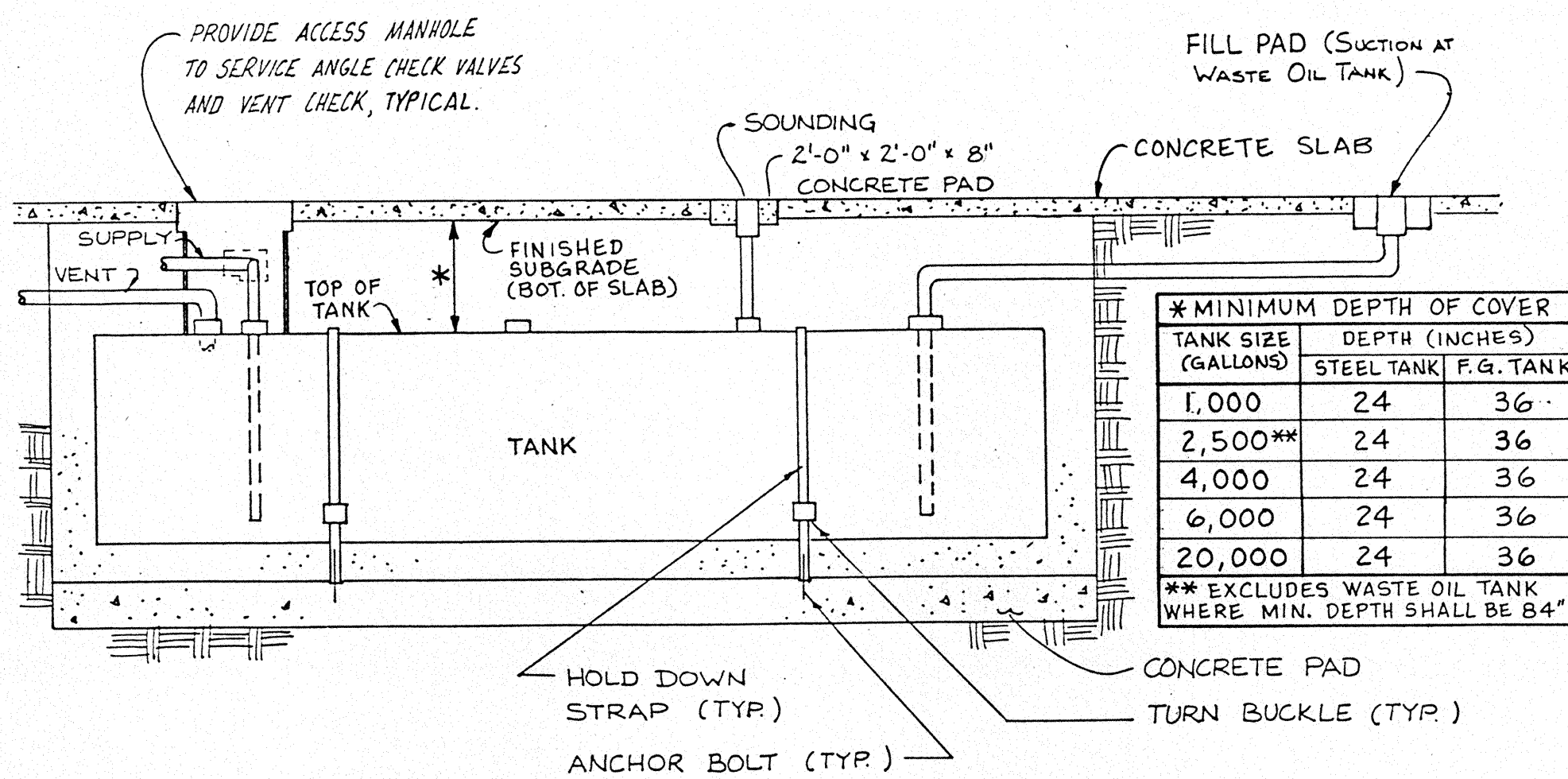
MAINTENANCE FACILITY TANK FARM - PIPING SCHEMATIC



SERVICE ISLAND PUMP ROOM ELEVATION
NTS



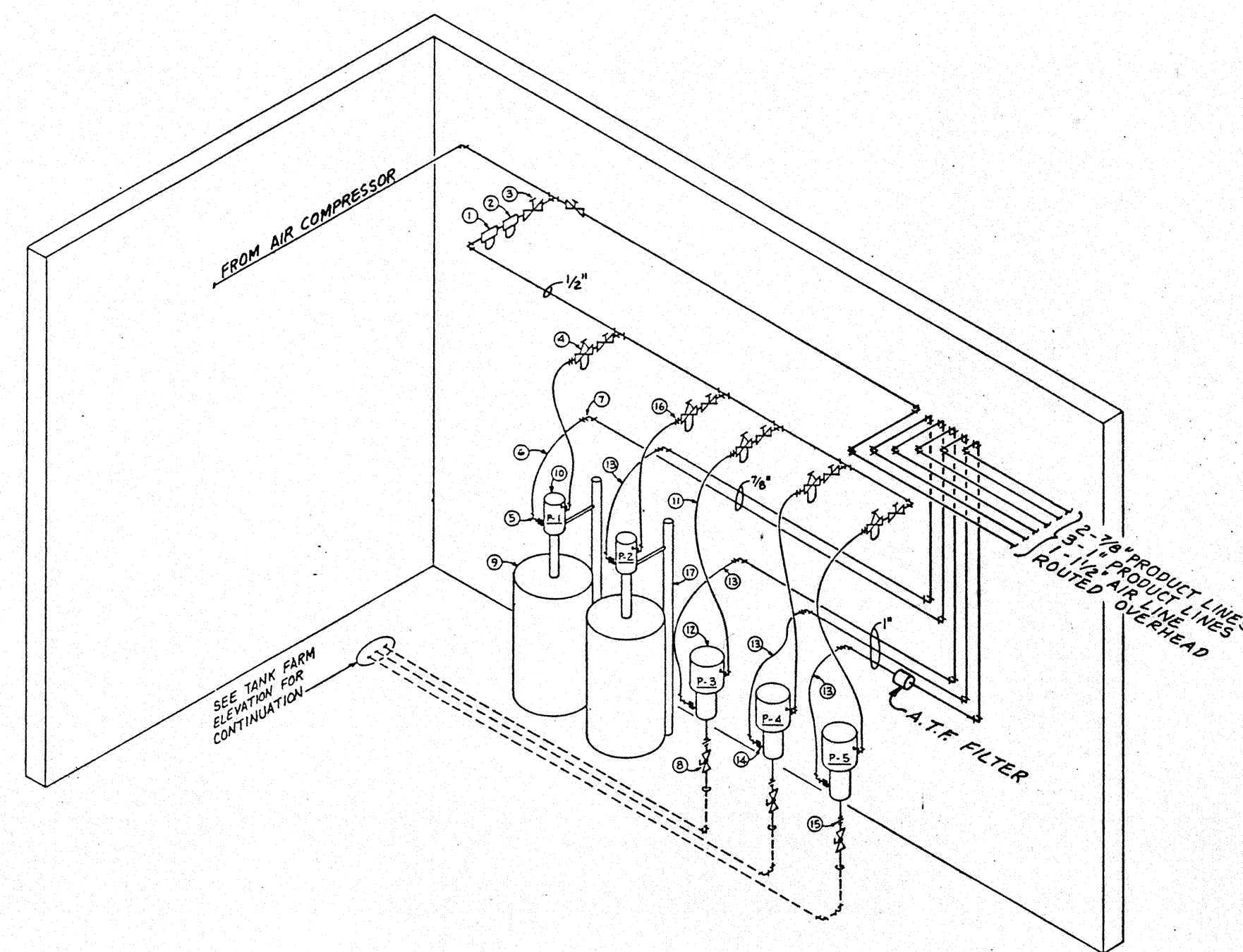
TYPICAL FILL PAD WITH SPILL CONTAINMENT
NTS



TYPICAL UNDERGROUND STORAGE TANK
NTS

TANK SIZE (GALLONS)	MINIMUM DEPTH OF COVER (INCHES)	DEPTH (INCHES)	STEEL TANK P.G. TANK
1,000	24	36	
2,500**	24	36	
4,000	24	36	
6,000	24	36	
20,000	24	36	

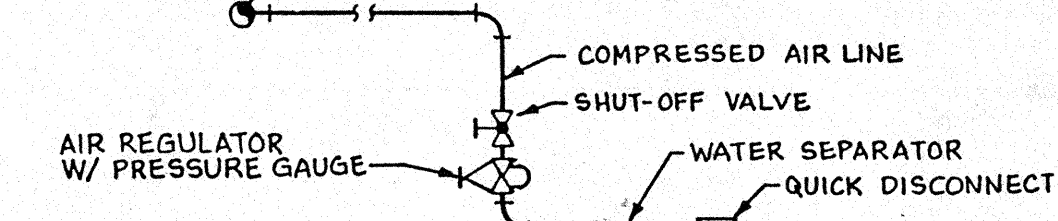
** EXCLUDES WASTE OIL TANK WHERE MIN. DEPTH SHALL BE 84"



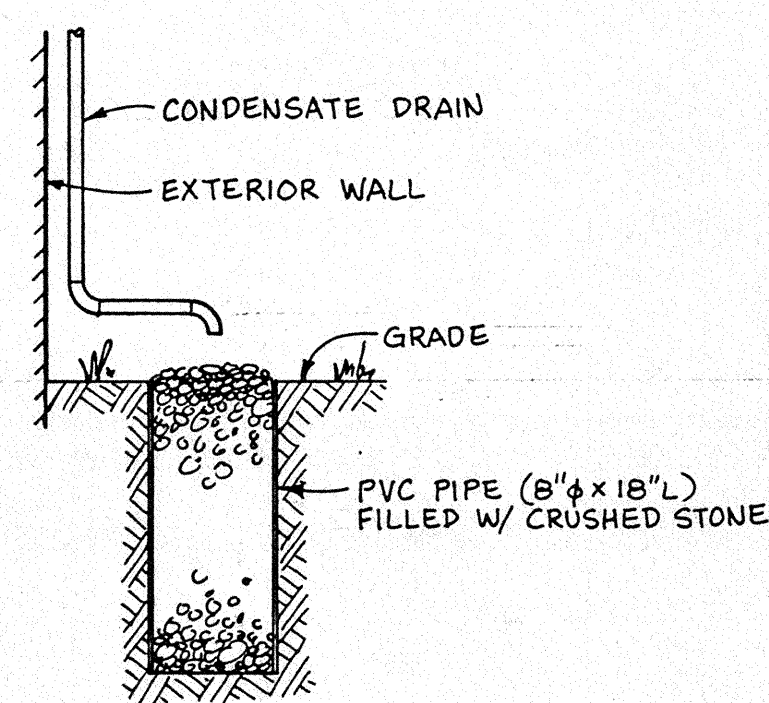
MAINTENANCE FACILITY PUMP ROOM - EAST ELEVATION
NTS

PUMP CONNECTION LEGEND

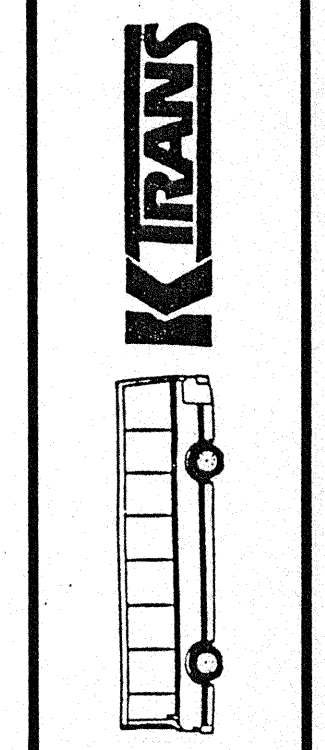
- 1 AIR LUBRICATOR
- 2 AIR LINE FILTER
- 3 GATE VALVE
- 4 AIR REGULATOR WITH PRESSURE GAUGE
- 5 90 SWIVEL ELBOW
- 6 HIGH - PRESSURE 1/2" HOSE
- 7 TUBE ELBOW
- 8 2" BALL VALVE
- 9 55 GALLON DRUM
- 10 DRUM PUMP WITH HOIST AND FOLLOWER
- 11 LOW PRESSURE AIR HOSE
- 12 STAND PIPE PUMP
- 13 MEDIUM PRESSURE 1/2" HOSE
- 14 QUICK DISCONNECT TUBE CONNECTOR
- 15 UNION
- 16 HOSE ADAPTER



AIR DROP DETAIL
NTS



TYPICAL FRENCH DRAIN DETAIL
NTS



SERVICE BLDG.: PRODUCT PIPING & HVAC, PLAN & DETAILS

DR. CHK. DATE	DESCRIPTION
DR. PBN 12-8-87	ORIGINAL ISSUE
DR. PBN 12-8-87	REISSUED FOR BID

