

ADDENDUM NO. 3

Friars Branch Pump Station Improvements Contract No. W-12-027-201

City of Chattanooga, Tennessee

The following revisions shall apply to the Contract Documents and Specifications for the Friars Branch Pump Station Improvements project as prepared by Arcadis.

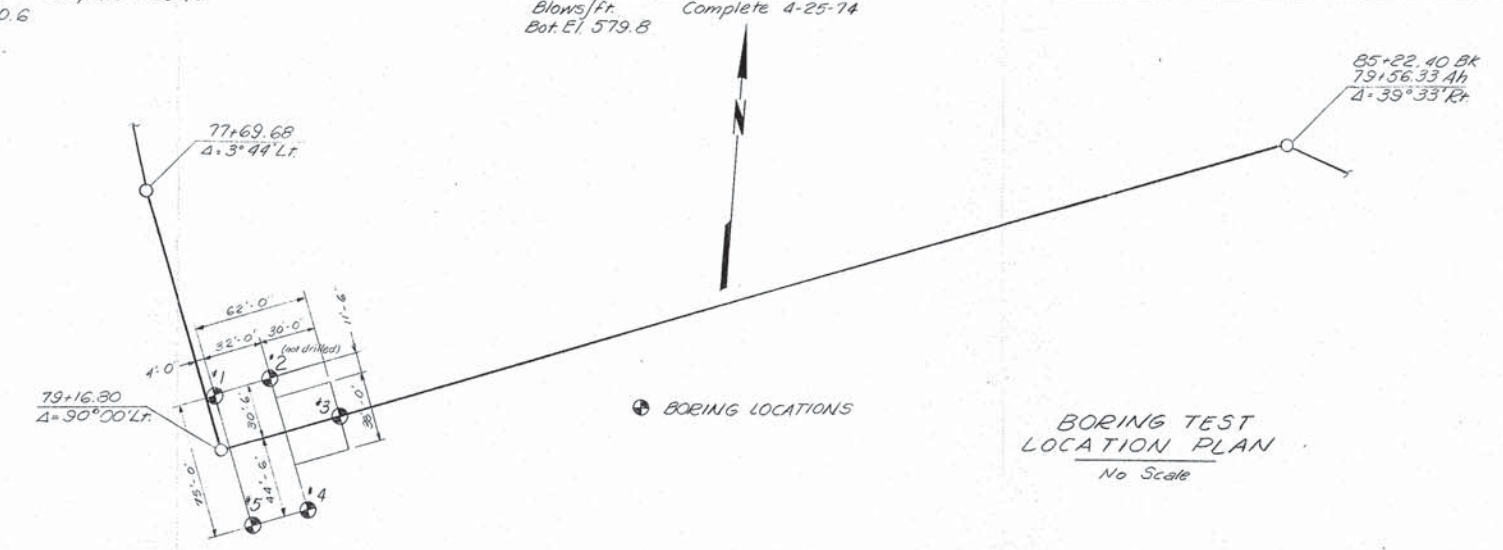
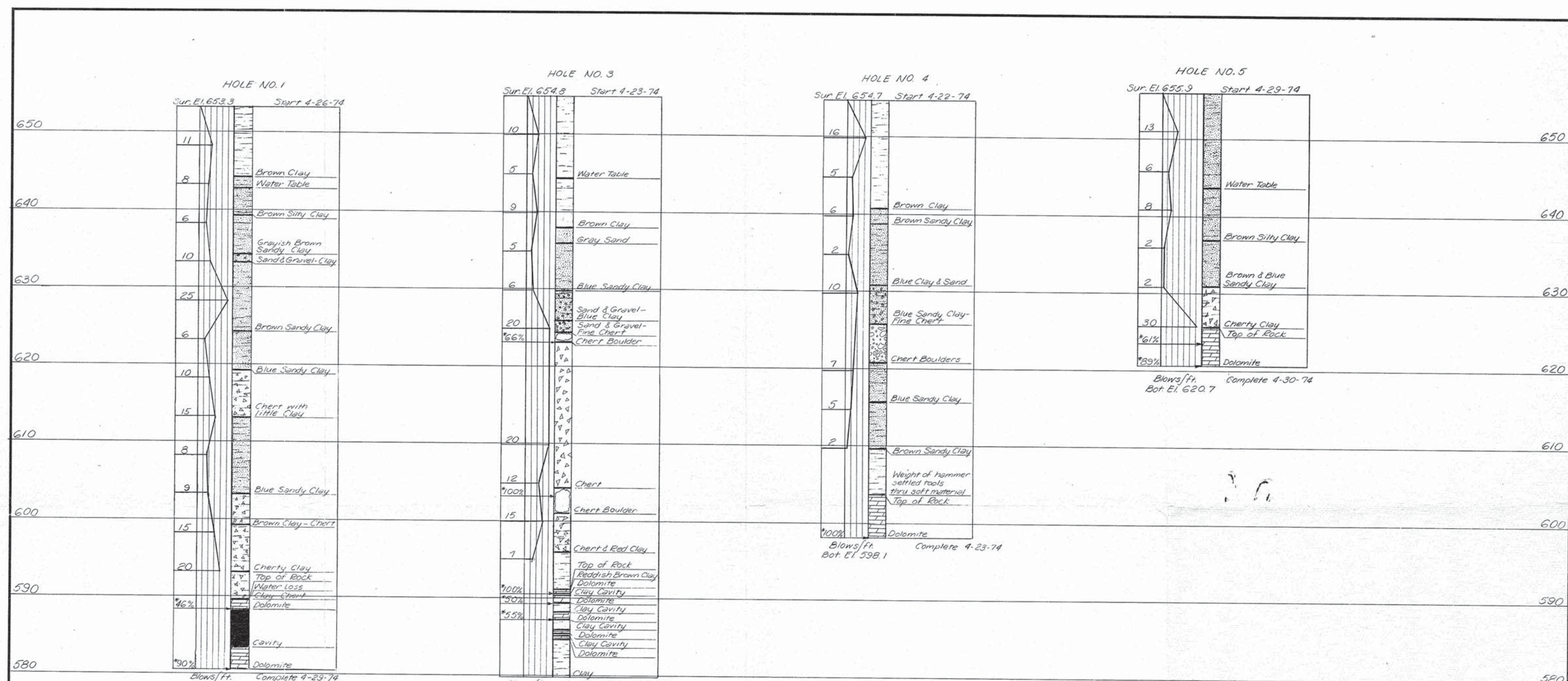
1. The Bid Opening has been rescheduled for Thursday, September 22, 2016 at 2:00 p.m. local time.
2. Historical geotechnical information, Logs of Borings, drawing number 5099J-1.0 is attached.
3. Available Record Drawings are attached.

End of Addendum No. 3

September 13, 2016

Date:

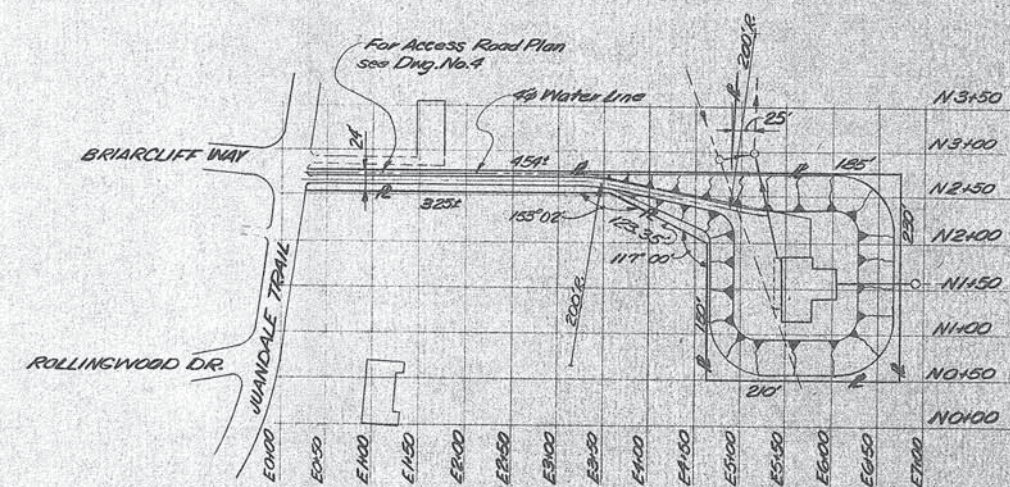
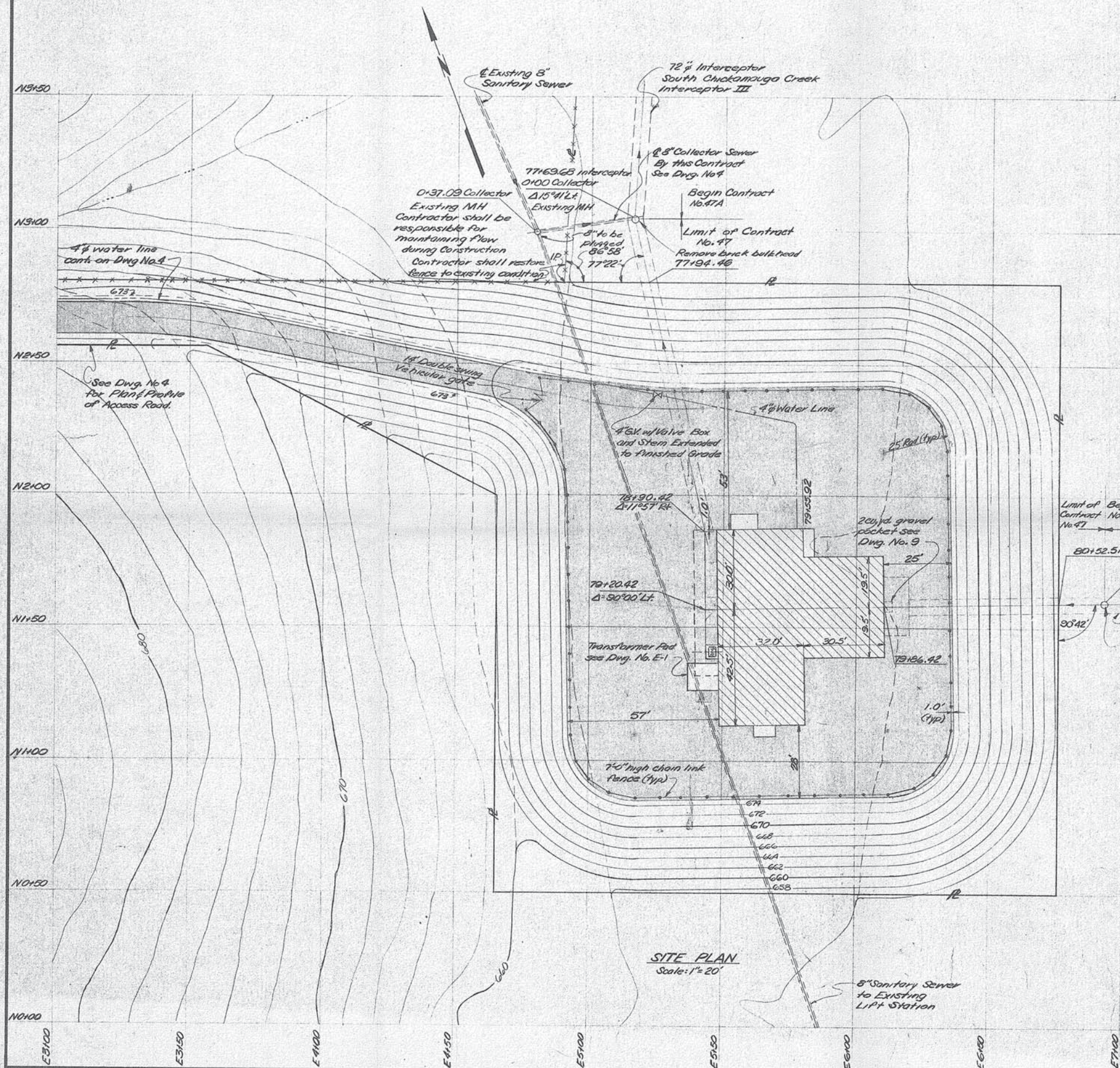
/s/ Justin C. Holland
Deputy Administrator, Public Works
City of Chattanooga



NOTES:

- The blows shown in these logs are the number required to drive a Standard BX Sampler one foot using a 140 lb. hammer falling 30 inches.
- * Indicates percentage of core recovery.

REV.	BY	DATE	DESCRIPTION
FRIAR BRANCH PUMPING STATION			
LOGS OF BORINGS			
CITY OF CHATTANOOGA, TENNESSEE			
DRWN. P.E.M.	HENSLEY-SCHMIDT, INC.		DRAWING NO.
CHKD. L.F.G., J.E.H.	CONSULTING ENGINEERS		5099J-10
DATE MAY 1974	CHATTANOOGA, TENNESSEE		
SCALE AS NOTED	ATLANTA, GEORGIA		



SITE PLAN
Scale: 1" = 100'

LEGEND

LEGEND

Existing and Finished contour	_____
Changed Contour	_____
Bituminous Penetration Pavement	_____
Existing Fences	* * * * *

Notes:
1. For General Notes see Dwg. #21

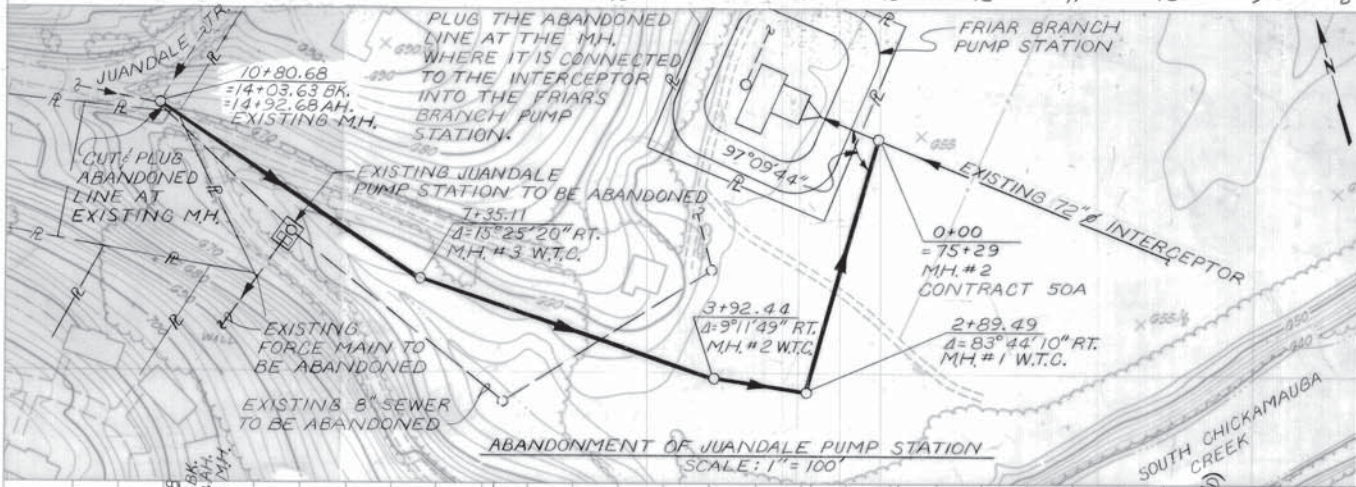
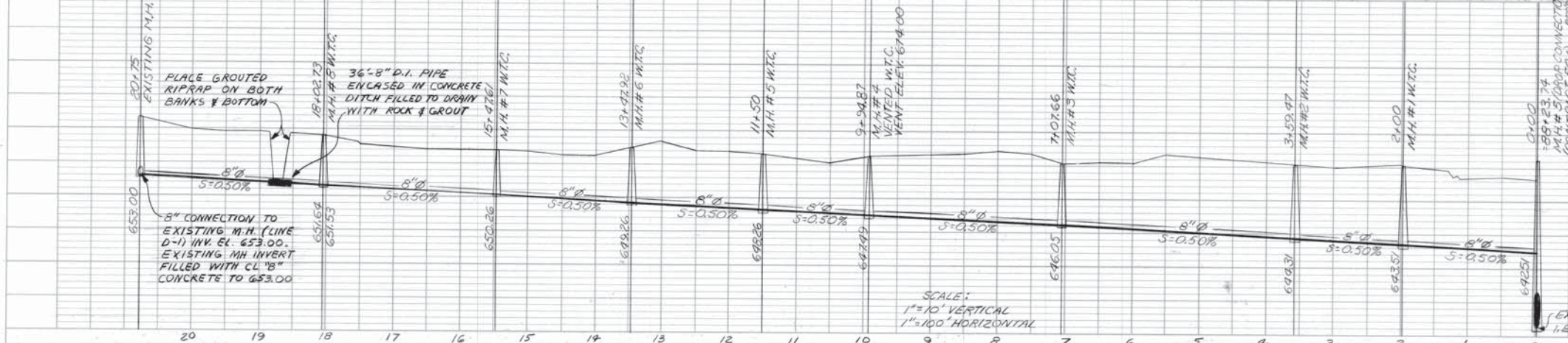
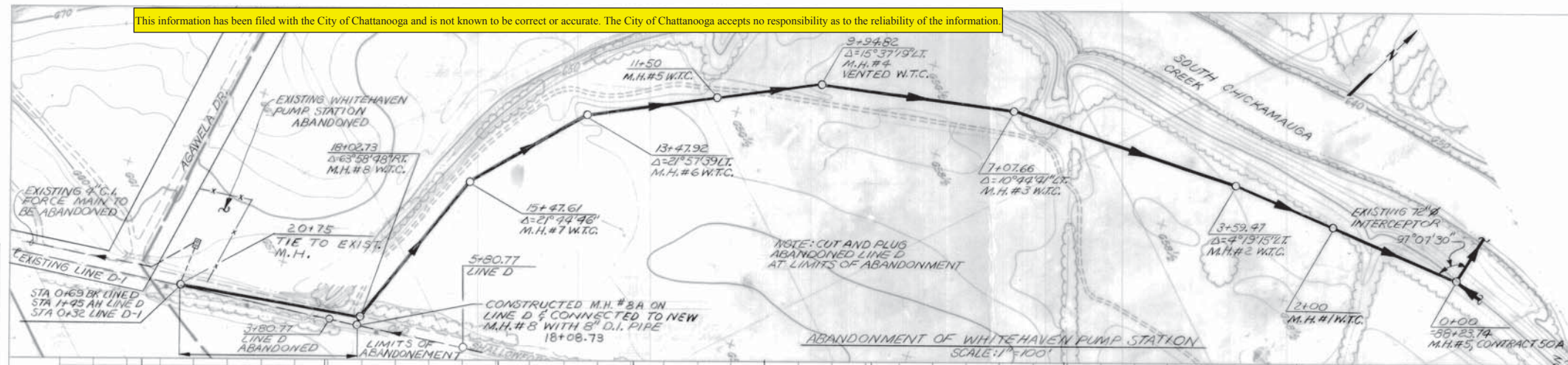
RECEIVED SEP 14

REV.	BY	DATE	DESCRIPTION
			FRIAR BRANCH PUMPING STATION
SITE PLAN			
CITY OF CHATTANOOGA, TENNESSEE			
DRWN. J.W.C. CHKD. E.A.S. DATE MAY 1974 SCALE AS NOTED		HENSLEY-SCHMIDT, INC. CONSULTING ENGINEERS CHATTANOOGA, TENNESSEE ATLANTA, GEORGIA	
		DRAWING NO. 5099-47 3.0	

This information has been filed with the City of Chattanooga and is not known to be correct or accurate. The City of Chattanooga accepts no responsibility as to the reliability of the information.

PLAN	DATE	BY	CHKD
NOTE BOOK	NO. 1	DATE	BY
NO.			

PROFILE	DATE	BY	CHKD
NOTE BOOK	NO. 1	DATE	BY
NO.			



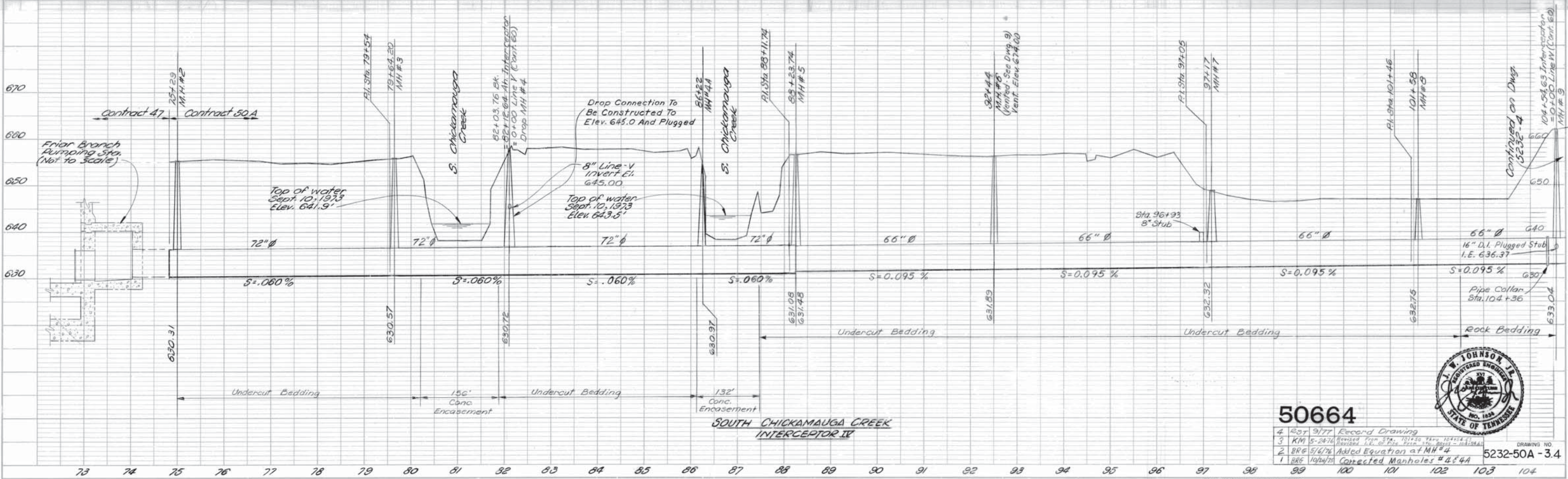
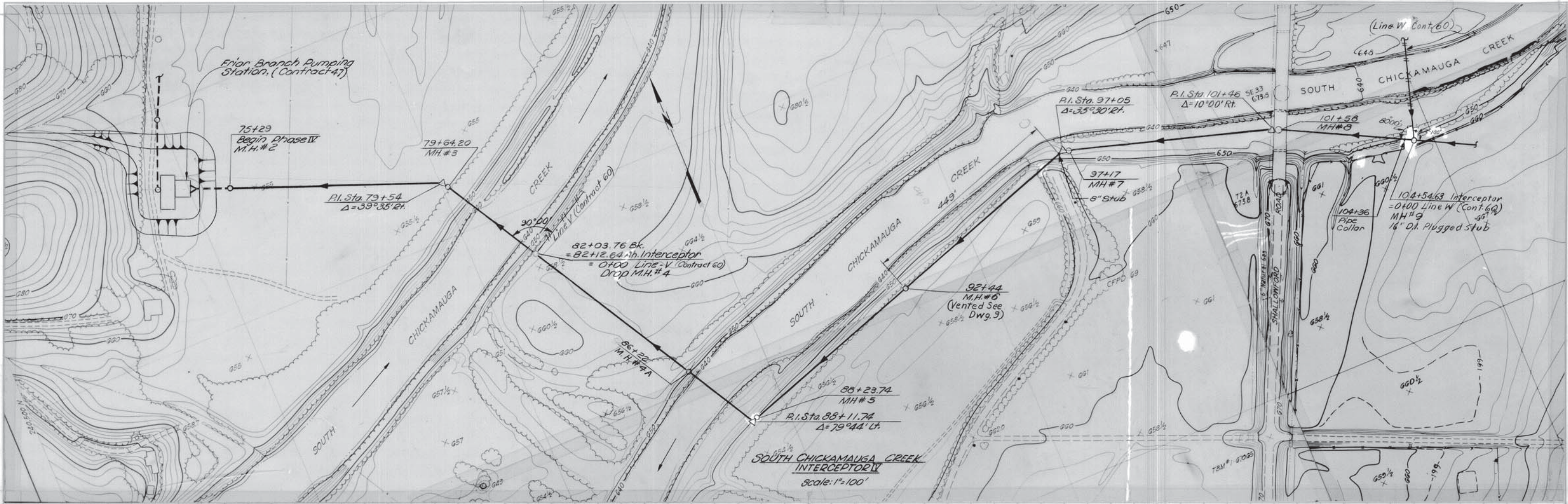
50229

No.	DATE	UNIT	DESCRIPTION
1	2-82	TW	Record Drawing

Dr. DEN 4-108	CL
HENSLEY-SCHMIDT, INC.	CONSULTING ENGINEERS
ATLANTA-CHATTANOOGA-JACKSON	CHARLOTTE-KNOXVILLE-NASHVILLE
PLAN SCALE	1"=100'
5234-550-33.1	

LINE NO.	BOOK NO.	PAGE NO.	DATE
50664	2688	11	5/1/74
DATE	BY	SCALE	NOTE BOOK
			NO. OF WAY DISC.

LINE NO.	BOOK NO.	PAGE NO.	DATE
50664	2688	11	5/1/74
DATE	BY	SCALE	NOTE BOOK
			NO. OF WAY DISC.



50664

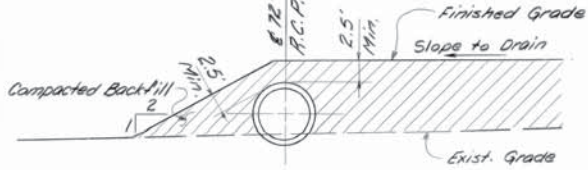
- 4 Rev 9/77 Record Drawing
- 3 KM 5-2476 Revised from Sta. 101+30 to Sta. 104+54.63
- 2 BRF 5/6/74 Added Elevation at MH #4
- 1 BRF 10/24/74 Corrected Manholes #4 & 4A

DRAWING NO.
5232-50A-3.4

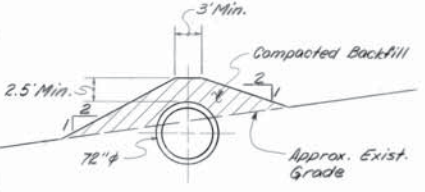


This information has been filed with the City of Chattanooga and is not known to be correct or accurate. The City of Chattanooga accepts no responsibility as to the reliability of the information.

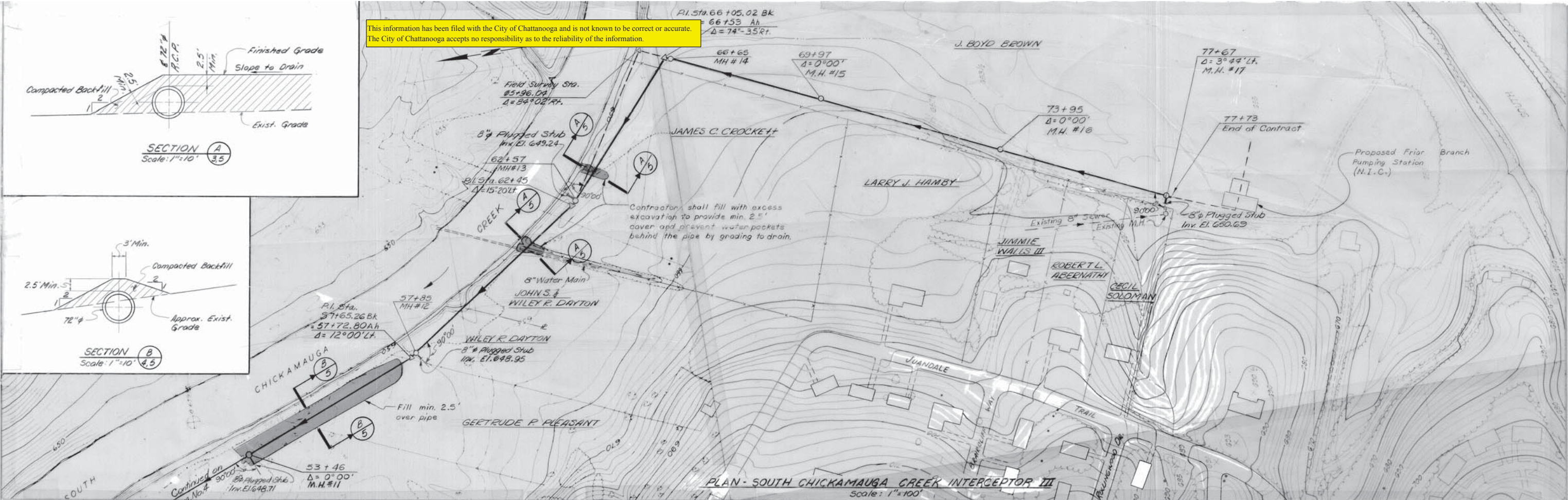
Book	Page	Date	PLAN
2681	2-3	July 1973	NOTE BOOK
2704	5-6	Sept 1973	NOTE BOOK
2749	29	Feb 1974	NOTE BOOK



SECTION A
Scale: 1"=10'

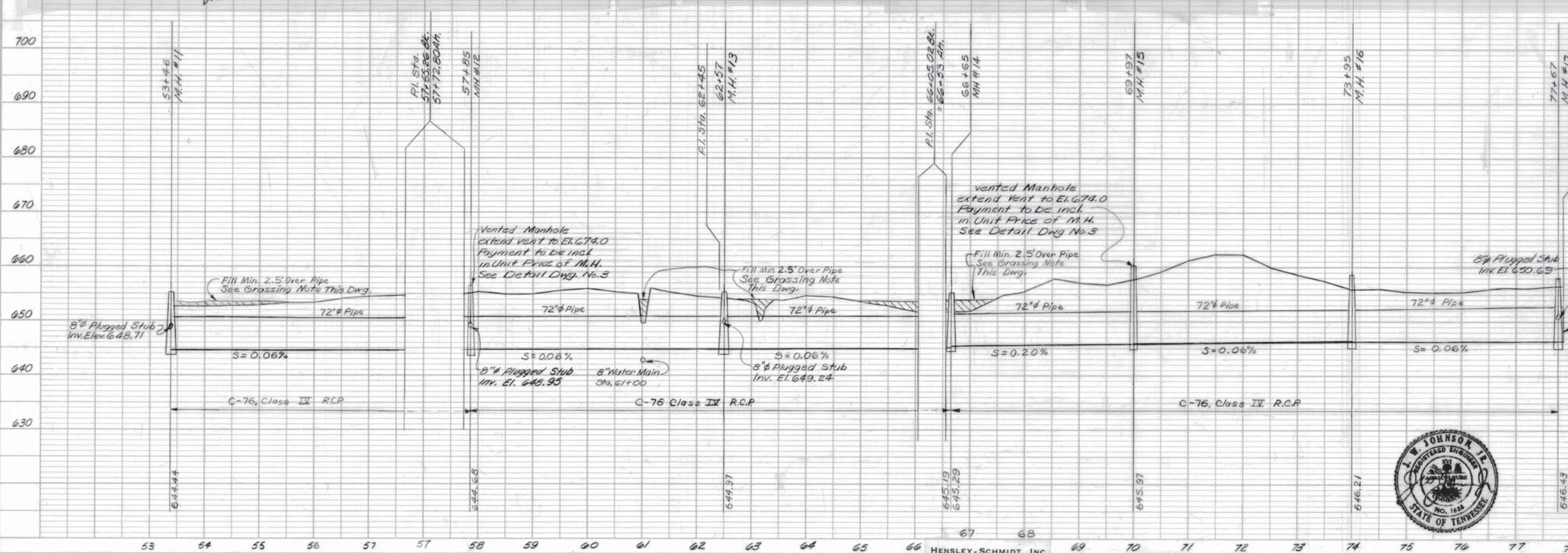


SECTION B
Scale: 1"=10'



PLAN - SOUTH CHICKAMAUGA CREEK INTERCEPTOR III
Scale: 1"=100'

Book	Page	Date	PROFILE
2680	10-12/15/16	July 1973	NOTE BOOK
2704	5-6	Sept 1973	NOTE BOOK
2749	29	Feb 1974	NOTE BOOK



Notes:
1. All Manholes on this dwg. below Elev. 673 shall have watertight covers. See Item 6 of Specifications.
2. All Manholes on this dwg. below Elev. 673 shall extend 18" above finished grade.

GRASSING NOTE
All area, such as fill around Manholes, minimum pipe cover, and etc., shall be grassed. Grass seed mixture shall be 50% Kentucky 31 Fescue, 25% English Ryegrass, 25% Orchard Grass, 5% Alsike Clover, and 2% Dutch Clover, and shall be sowed at a rate of 3 1/2 lbs. per 1000 sq. ft. No additional payment will be made for grassing, cost shall be included in unit cost of appropriate bid item.
Provide Brick Bulkhead Payment to be included in unit price of Manhole.



50734	
Rev.	By Date Description
1	2/8/74 Record Drawing
2	7/1/74 Added Field Survey Data & Book
3	7/1/74 Added 8" Plugged Stub