



# CITY OF QUINCY

Department of Utilities & Engineering

Jeffrey Conte, P.E.  
Director of Utilities & Engineering

City Hall - 730 Maine Street  
Quincy, Illinois 62301-4048  
(217) 228-4527

October 30, 2019

To: Prospective Bidders

**Subject: Addendum No. 1 to the South Quincy Lift Station Rehabilitation Project**

This Addendum forms a part of the bidding contract documents and modifies the original bidding documents dated October 11, 2019. The bid opening date does not change.

## BIDDING DOCUMENTS

1. Sheet A102 is revised, a copy of which is enclosed.
2. Sheet E501 is revised, a copy of which is enclosed.
3. Section 26 32 13, paragraph 2.2 insert the following revision:
  - E. Generator Enclosure
    1. Generator shall be furnished with a weatherproof enclosure for outdoor installation.
4. Section 33 31 23, paragraph 2.2A is hereby revised as follows:
  - A. Knife Gate Valves
    1. Valves shall have a ductile iron ~~cast 316 stainless steel~~ body, triple o-ring stem seals, 316 stainless steel gate, PTFE packing, EPDM sleeve seat, 18-8 stainless steel body bolting, and cast iron handwheel.
    2. Valves bodies shall be lug style, drilled for ASME Class 150 flange through-bolting.
    3. Valves shall be Red Valve Series D ~~DeZurik model KGN-RSB~~ or approved equal.
    4. Valves shall be provided with 4:1 bevel gear and handwheel.
5. Section 33 32 11, delete paragraphs 2.4(C)(3)(a) through (e).
6. Section 33 32 11, paragraph 2.4(E) is hereby revised as follows:
  - E. Pump Station Discharge Flow Meter
    1. Station discharge flow meter shall be an electromagnetic flow tube with remote mounted signal converter.
      - a. Flow tube shall be Krohne Optiflux 2000 with remote signal converter, or approved equal.
        - i. Flow tube shall be suitable for mounting in a Class I, Division 2 ~~1~~ hazardous location.

- ii. Flow tube shall be shipped loose for field installation by the Contractor as shown on the Plans.
- b. Flow signal converter shall be Krohne IFC300.
  - i. Signal converter shall be wall mount style with NEMA 4X enclosure ~~rack-mounted housing style (28 TE)~~.
  - ii. Signal converter shall be shipped loose and wall-mounted by the Contractor ~~through the aluminum swing-out panel~~.
- c. Analog output (4-20 mA) from the signal converter shall be wired to terminal blocks for field connection to the wireless telemetry unit.

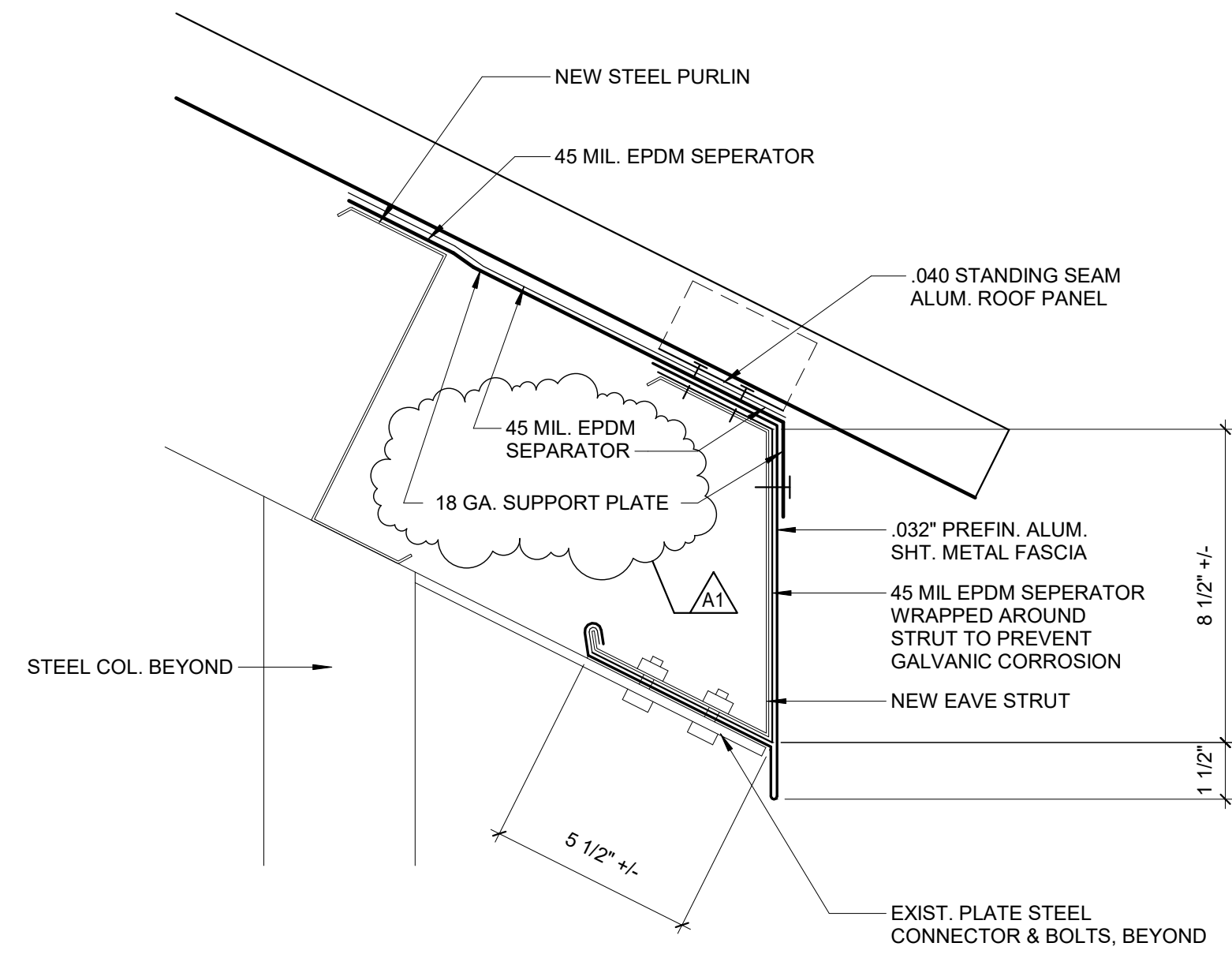
#### CLARIFICATIONS

1. Coordination with the Owner is essential for pump station service interruptions during the construction process. In general, the pump station may not be taken off-line for more than six (6) consecutive hours. Service interruption longer than this will likely require bypass pumping. Bypass pumping shall be the sole responsibility of the Contractor. For sizing purposes, the Contractor can assume a flow rate of up to 1,200 gallons per minute coming from the North Sewer and 750 gallons per minute coming from the South Sewer.

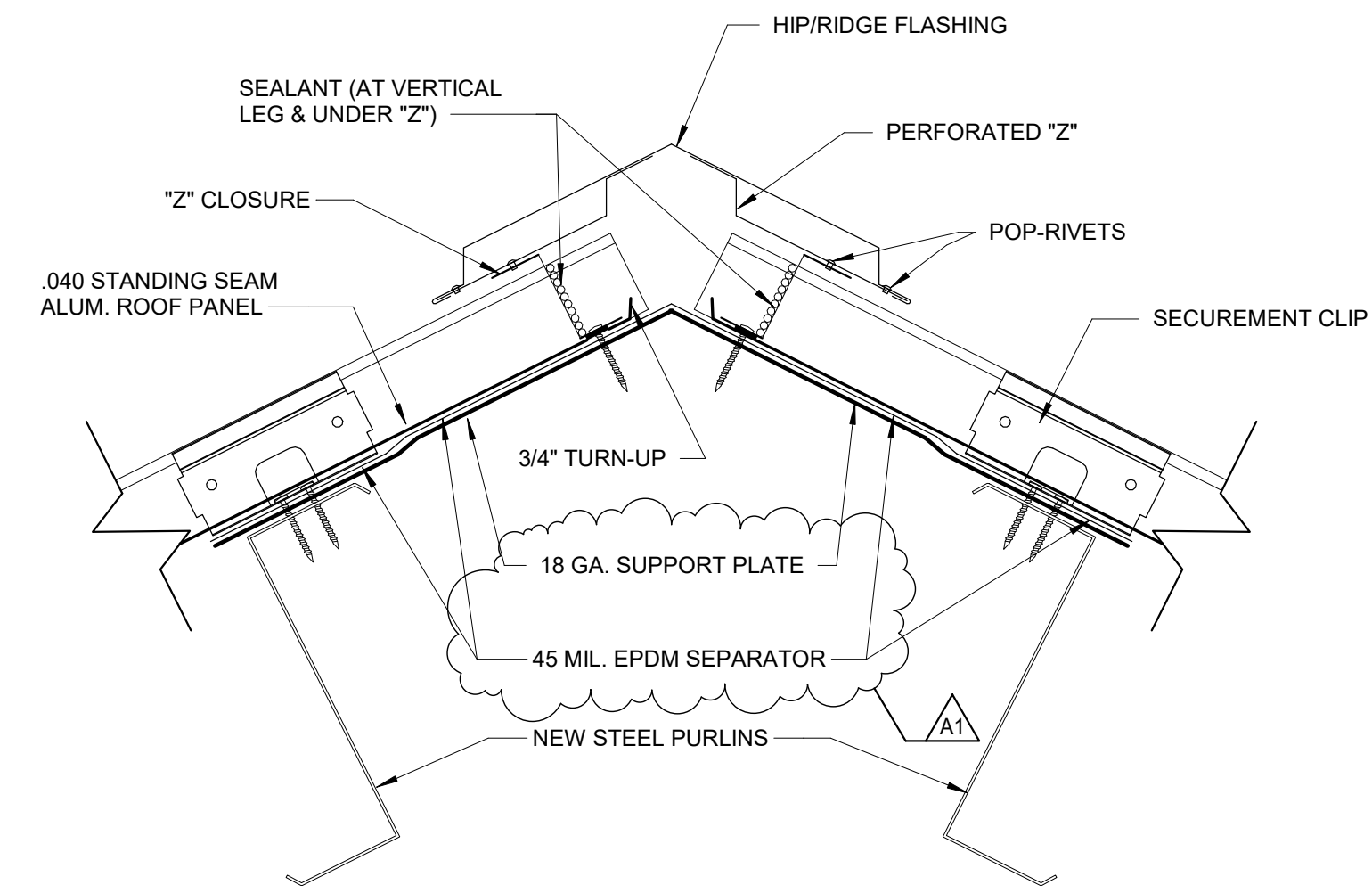
If you have any questions about this addendum, please contact me at 217-228-4527.

Sincerely,

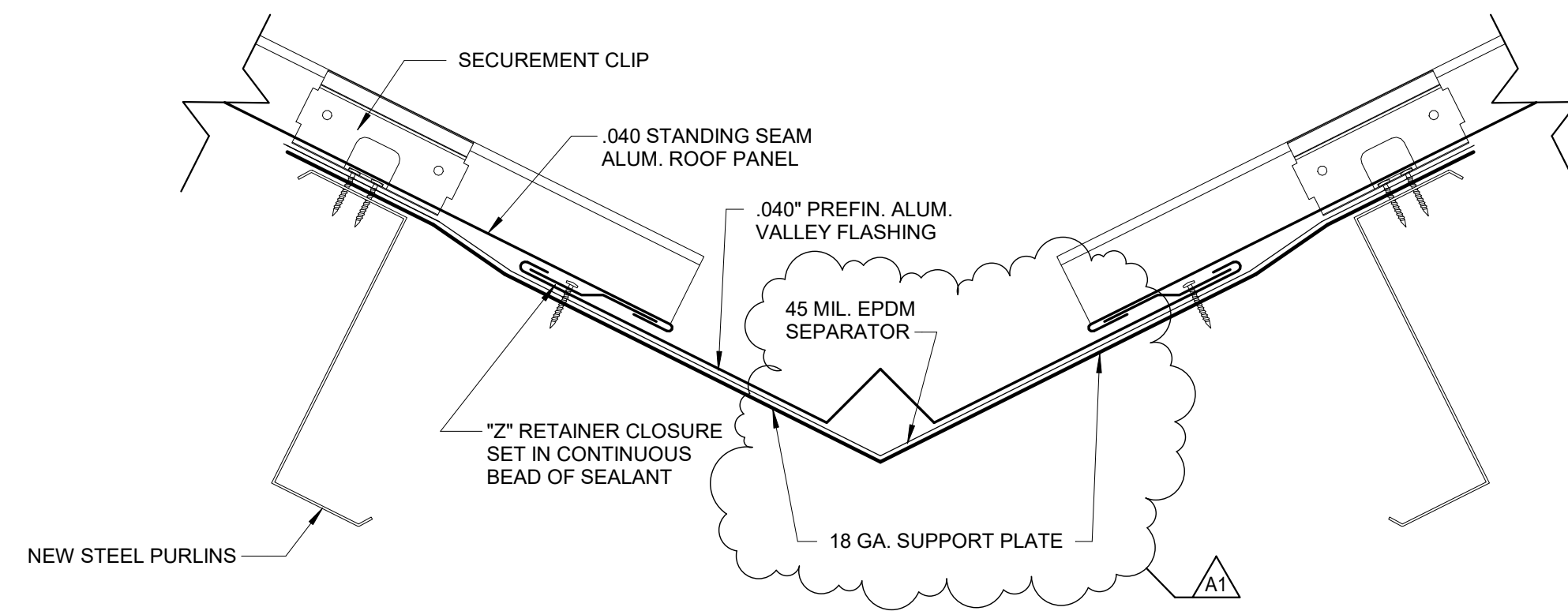
Jeffrey Conte, P.E.



1 DETAIL - FLASHING  
3" = 1'-0"



2 DETAIL - VENTED RIDGE & HIP FLASHING  
3" = 1'-0"



3 Valley Detail  
3" = 1'-0"

© 2019 KLINGNER & ASSOCIATES P.C.  
This document shall not be used for any purpose or project for which it is not intended. Kingner & Associates P.C. and the Division shall be indemnified by the client and held harmless from all claims, damages, liabilities, losses and expenses, including attorneys fees and costs arising out of such misuse or reuse of this document. In addition, unauthorized reproduction of this document, in part or as a whole, is prohibited.

REVISION HISTORY			
NO.	DESCRIPTION	DATE	APPR.
A1	ADDENDUM 1	10/22/2019	

SOUTH QUINCY LIFT STATION  
REHABILITATION  
CITY OF QUINCY  
730 MAINE STREET  
QUINCY, ILLINOIS

Non-Reduced Sheet Size 22" x 34"  
Full sized plans have been prepared using standard scales.  
Reduced sized plans may not conform to standard scales.

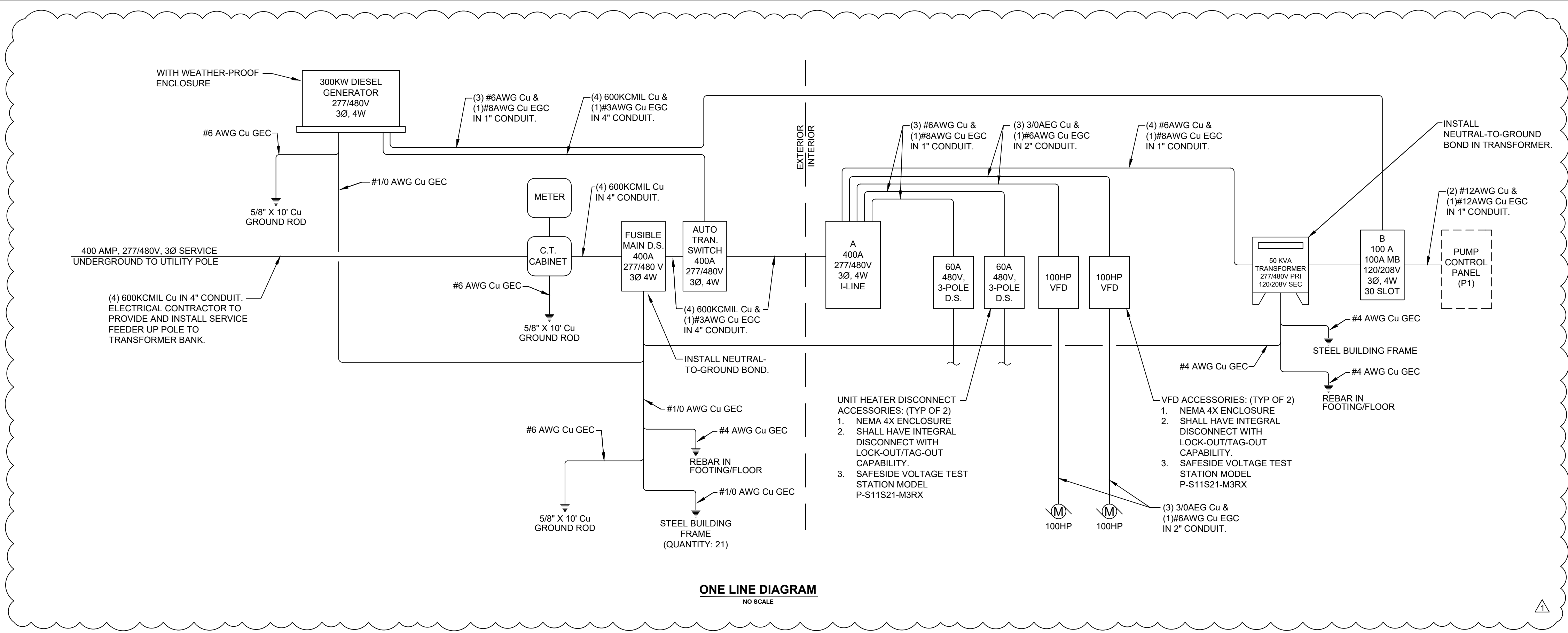
DESIGNED	DRAWN
Designer	Author
FIELD	FIELD BOOK
CHECKED	CHECK DATE
Checker	

SHEET TITLE

ROOF DETAILS

PROJECT NO.  
19-0192  
DRAWING ISSUED DATE:  
09/10/19  
SHEET

A102



**LIGHTING SCHEDULE**

ID	Manufact.	Model	Lamp Type	Voltage	Watts	Mounting	Notes
V	Metalux	Vaportite LED	4' Linear LED	120	55	Chain	Provide SS latches
X	Crouse-Hinds	Champ MLL	4' Linear LED	120	72	Ceiling	Hazardous location rated
L	Lumark	XTOR Crosstour	Area/Site LED	120	38	Wall	Photocell control

**ELECTRICAL PANEL: A**

Location: EXTERIOR SURFACE 400 A 277/480 V 3 Ph 4 Wire Fault Rating: 65,000A

Area Served: LIFT STATION

No.	Description	Brkr. Amps	Load						Brkr. Amps	Description	No.	
			A	B	C	C	B	A				
1	VFD1 - PUMP #1	200	34364	34364				10000	10000	60	TRANSFORMER T1	2
3												4
5					34364		10000					6
7			34364						831			8
9	VFD2 - PUMP #2	200		34364						20	EXHAUST FAN EF-1	10
11												12
13			10000									14
15	UNIT HEATER UH-1	50		10000					443			16
17					10000		443					18
13			10000									14
15	UNIT HEATER UH-2	50		10000								16
17					10000							18
Totals			78728	78728	78728	11274	11274	11274				
Totals			90002	90002	90002	270006				332554		

**ELECTRICAL PANEL: B**

Location: EXTERIOR SURFACE 100 A 277/480 V 3 Ph 4 Wire Fault Rating: 42,000

Area Served: LIGHTS AND RECEPTACLES

WITH 100A MAIN BREAKER NEMA 4X ENCLOSURE

No.	Description	Brkr. Amps	Load						Brkr. Amps	Description	No.
			A	B	C	C	B	A			
1	LIGHTS - MAIN LEVEL	20	296					540		2	RECEPTACLES
3	LIGHTS - PUMP ROOM LOWER LEVEL	20		420				2500		4	GENERATOR
5	LIGHTS - INCOMING ROOM - LOWER	20			140	2500				6	
7	REMOTE TELIMITRY UNIT	20	500							8	SPARE
9	PUMP CONTROL PANEL P1	20		500						10	SPARE
11	SPARE	20								12	SPARE
13	SPACE									14	SPACE
15	SPACE									16	SPACE
17	SPACE									18	SPACE
19	SPACE									20	SPACE
21	SPACE									22	SPACE
23	SPACE									24	SPACE
25	SPACE									26	SPACE
27	SPACE									28	SPACE
29	SPACE									30	SPACE
Totals			796	920	140	2500	2500	540			
Totals			1336	3420	2640	7396			83138		

**KLINGNER & ASSOCIATES, P.C.**  
Engineers • Architects • Surveyors

Quincy, Illinois  
616 North 24th Street  
217.223.3670

www.klingner.com  
Galesburg, IL Burlington, IA  
Pella, IA Hannibal, MO Columbia, MO

© 2019 KLINGNER & ASSOCIATES P.C.  
This document shall not be used for any purpose or project for which it is not intended. Klingner & Associates P.C. and their Divisions shall be indemnified by the client and held harmless from all claims, damages, liabilities, losses and expenses, including attorney's fees and costs arising out of such misuse or reuse of this document. In addition, unauthorized reproduction of this document, in part or in a whole, is prohibited.

**REVISION HISTORY**

MARK	DESCRIPTION	DATE	APPR
△	ADDENDUM #1	10/28/2019	JAK

**SOUTH QUINCY LIFT STATION  
REHABILITATION**  
CITY OF QUINCY  
730 MAINE STREET  
QUINCY, ILLINOIS

Non-Reduced Sheet Size: 22" x 34"  
Full sized plans have been prepared using standard scales. Reduced size plans may not conform to standard scales.

DESIGNED: JAK DRAWN: JAK  
FIELD: FIELD BOOK  
CHECKED: CHECK DATE

SHEET TITLE  
**ELECTRICAL  
ONE LINE DIAGRAM  
AND PANEL  
SCHEDULES**

PROJECT NO.  
19-0192  
DRAWING ISSUED DATE:  
08/05/2019

SHEET  
**E501**