



St. Johns River

Water Management District

Ann B. Shortelle, Ph.D., Executive Director

525 Community College Parkway S.E. • Palm Bay, FL 32909 • 321-984-4940
On the internet at www.sjrwmd.com.

DATE: February 5, 2019
TO: Prospective Respondents
FROM: Amy Lucey, Procurement Specialist
SUBJECT: Addendum #3 to IFB # 34093, C40 Plugs Enhancements

As a result of inquiries, the following clarifications/changes are provided for your information. Please make all appropriate changes to your bid documents.

- Q1: We have reviewed the plans and specifications for IFB 34093 C-40 Plugs Enhancements and would like to request Golden Harvest, Inc. be named by addendum for the slide gate shown on drawing S3. We have attached a typical drawing and specification for your review. Golden Harvest meets or exceeds the specification.
- A1: Attached is a gate detail from our Lake Apopka project that utilized a spigot back. A flange connection is an acceptable alternative but would require that a flange be welded to the end of the culvert. The Golden Harvest gate with a welded flange on the end of the culvert will be considered an approved equal to the AC-41 spigot back gate manufactured by Waterman Industries. Contractors may use the option for either the spigot back or flange connection with a welded flange on the end of the culvert in their preparation.
- Q2: Please confirm when this bid will be awarded.
- A2: In order to give the Contractor more time to complete the project, the award has been moved from the April to the March Board Meeting.

NOTE: The Bid Due Date remains 2:00 p.m., Wednesday, February 20, 2019

Attachments:
Drawing – Slide Gate detail with spigot back

Please acknowledge receipt of this Addendum on the BID FORM provided in the bid package.

If you have any questions, please e-mail me at alucey@sjrwmd.com.

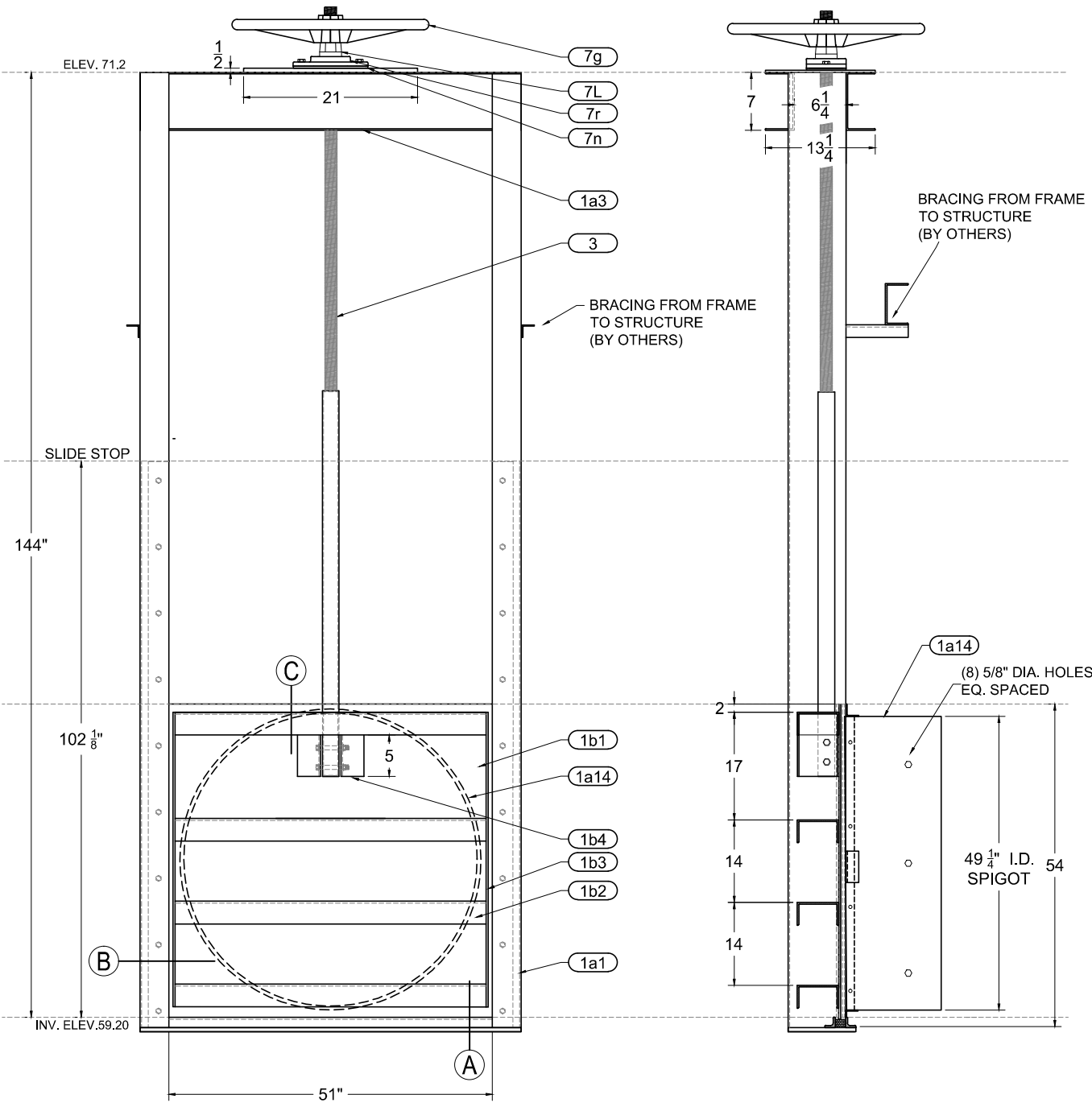
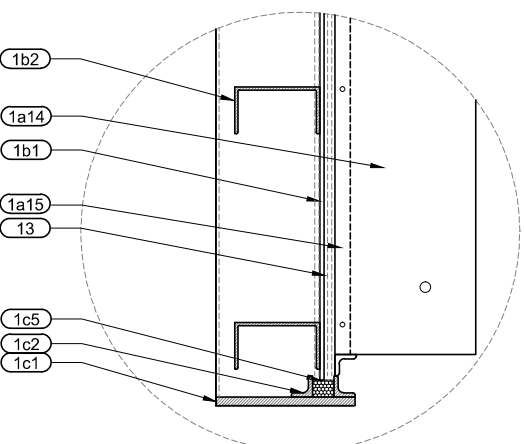
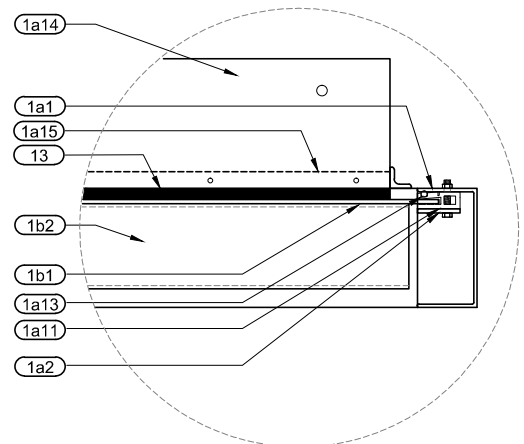
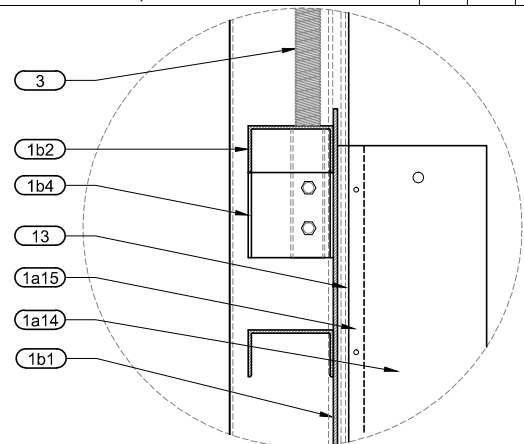
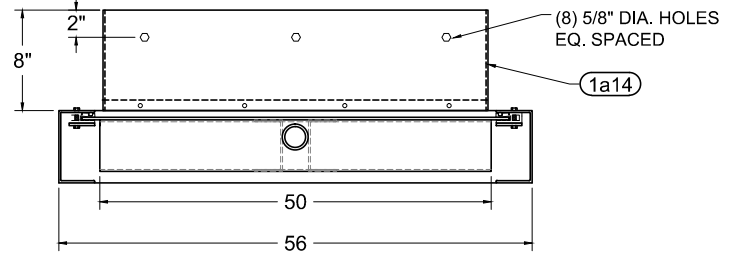
SHOULD ANY OF THE SEALINGS SURFACES, SLIDE, OR SLIDE GUIDE SURFACES COME IN CONTACT WITH GROUT UPON INSTALLATION AND THESE SURFACES ARE NOT COMPLETELY CLEANED AND GROUT FREE BEFORE GATE IS ACTUATED WARRANTY WILL BE VOID. SHOULD YOU HAVE ANY QUESTIONS REGARDING OUR PRODUCT OR ITS INSTALLATION, PLEASE DO NOT HESITATE TO CONTACT OUR OFFICE AT 954-917-6161

SUPPLEMENTAL FABRICATION SHEET ATTACHED (FOR U.S. CUSTOM FABRICATION, INC. SHOP USE ONLY)

Y N

MATERIAL KEY

FINISH KEY



MATERIAL KEY		FINISH KEY	
1. CAST IRON: ASTM A-126 CL. B	37. M.S. STEEL HDW.: ASTM A-449	1. AS CAST	
6. STRUCTURAL STEEL: ASTM A-36	38. POLYETHYLENE U.H.M.W.	2. MILL	
9A. STN. STEEL: ASTM A-276 TY.304	39. MYLAR	3. MACHINED	
9B. STN. STEEL: ASTM A-276 TY.316	40. CLEAR POLYCARBONATE PIPE	4. GALVANIZE-ASTM A-123	
9C. STN. STEEL: ASTM A-276 TY.304L	41. PVC PIPE	5. GALVANIZE-ASTM A-153	
12. COMMERCIAL BRONZE		6. SEE PAINT KEY	
12A. MANGANESE BRONZE: ASTM B584 UNS-C8650		7. ZINC PLATED	
13. NEOPRENE RUBBER: ASTM D-2000		PAINT KEY	
15A. STN. STL. HDW.: ASTM F-593 & 594 TYPE 304 (GRADE 8 & B8)		6A STANDARD SHOPCOAT	
17. ALUMINUM: ALLOY 6061-T6		RUST OLEUM	

ITEM DESCRIPTION	MATERIAL KEY	FINISH KEY	PART NO. OR SIZE	QTY/ GATE	TOTAL QTY
1. SLIDE GATE ASSEMBLY					
a) FRAME WELDMENT					
1) GUIDE RAIL	17		7" X 3.5" X .210" CHANNEL	2	
2) COVER GUIDE	17		2 1/2" X 1/4" PLATE	2	
3) HEAD RAIL	17		7" X 3.5" X .210" CHANNEL	2	
4) HEAD RAIL PLATE	17		13 1/2" X 21" X 1/2" PLATE	1	
8) FRAME GUSSET	N/A		-	-	
11) EXTRUDED POLY SEAL (T1-SIDE)	38		UHMW PE	2	
13) ROPE SEAL	13		NEOPRENE	A/R	
14) SPIGOT	17		1/4" PLATE	1	
15) SEAL RETAINER	9A		1/8" PLATE	1	
b) SLIDE WELDMENT					
1) SLIDE PLATE	17		1/4" PLATE	1	
2) STRONG RIB (INVERTED)	17		5" X 2.75" X .190" CHANNEL	4	
3) VERTICAL RIB (STIFFENER)	17		4" X 1/4" FLAT BAR	2	
4) NUT POCKET FLAT	17		5" X 2.75" X .190" CHANNEL	1	
c) FLUSH BOTTOM BOX					
1) FLUSH BOTTOM SEAL FLAT	17		1/2" FLAT PLATE	1	
2) FLUSH BOTTOM SEAL ANGLE	17		1 1/4" X 1 1/4" X 1/4" ANGLE	1	
5) FLUSH BOTTOM SEAL	13		1-1/4" STANDARD EXTRUSION	1	
3. STEM					
	9A		1 1/2" DOUBLE LEAD LEFT ROLLED	1	
			4 T.P.I. ACME THREAD		
7. LARGE BEARING LIFT ASSEMBLY					
g) HANDWHEEL	1		24" HANDWHEEL	1	
L) LIFT NUT / OPERATING NUT	12A		B584 BRONZE	1	
n) BASE PLATE	17		1/4" PLATE	1	
r) POLY BEARING ASSEMBLY	38		POLY BEARINGS	2	
8. ANCHOR BOLTS					
	9A		1/2" X 8" ALL THREAD ROD	A/R	
9. BOLTS, NUTS & WASHERS					
a) HEX HD. BOLT & NUT COVER GUIDE	9A		1/2" HEX	A/R	
d) C/S BOLT & NUT SEAL TYPE 2 T/B	9A		5/16" F.H. SOCKET	A/R	
e) HEX HD. BOLT & NUT STEM HANGER	9A		5/8" X 3 1/2" HEX	2	
h) HEX HD BOLT & NUT LIFT ASSY.	9A		1/2" HEX	2	

NOTES:
 1. MAXIMUM ON SEATING HEAD PRESSURE - 10 FT., MAXIMUM OFF SEATING HEAD PRESSURE - 10 FT.
 2. LIFT CAPACITY @ 40LB. PULL = 5920 lbs
 3. NON-SHRINK EPOXY GROUT, SEALANT AND/OR GASKET TO BE SUPPLIED BY OTHERS
 4. SLIDE DESIGN DEFLECTION = 1/360
 5. YOKE DESIGN DEFLECTION = 1/360

CONTRACTOR NOTE
 IT IS YOUR RESPONSIBILITY TO REVIEW EACH DRAWING AND MAKE ANY CORRECTIONS THAT ARE REQUIRED. WHEN THE DOCUMENT IS SIGNED YOU ARE APPROVING U.S. CUSTOM FABRICATION, INC. TO MOVE FORWARD INTO PRODUCTION WITH THE GATE AS SHOWN. U.S. CUSTOM FABRICATION, INC. WILL ASSUME NO RESPONSIBILITY FOR ERRORS, CORRECTIONS, OR REVISIONS AFTER SIGNED DATE.
 SIGNED: _____ DATE: _____

CUSTOMER:
 SHENANDOAH CONSTRUCTION
 1888 NW 22nd STREET
 POMPANO BEACH, FL. 33069

GATE DESCRIPTION:
 48" x 54"
 FABRICATED SLIDE GATE

PROJECT:
 ST. JOHNS RIVER



REV. NO.	DATE	BY	CONFORMATION NO.	JOB NO.
1	01/04/18	LC		-
REV. NO.	DATE	BY	QUOTE ITEM NUMBER:	DRAWN BY:
-	-	-	9207	-
REV. NO.	DATE	BY	CHECKED BY:	PAGE NO.:
-	-	-	L. CAMPBELL	1 OF 1
REV. NO.	DATE	BY	SCALE:	DATE:
-	-	-	N.T.S.	12/20/17
REV. NO.	DATE	BY	DRAWING NO.	
-	-	-		

U.S. CUSTOM FABRICATION ~ 1858 NW 21ST. STREET ~ POMPANO BEACH, FL 33064 ~ 954-917-6161

C:\Users\Lyn\Dropbox\CUSTOMER SHOP DRAWINGS\SHENANDOAH CONSTRUCTION\ Jan 4, 2018 - 1:14:43 PM Lyn