

Addendum 1

City of Canton, Ohio
Purchasing Department
218 Cleveland Ave. SW, 4th floor
Canton, Ohio 44702

Edgefield Area Phase 1 Water Main Replacement - TAG 576

Item/Project

Water Department

Responsible Department

Tuesday, October 5, 2021 at 2:00 PM local time

Bids Due

Bid Proposal Submitted By:

Company Name

Street Address

City

State

Zip

Contact Person

Phone No.

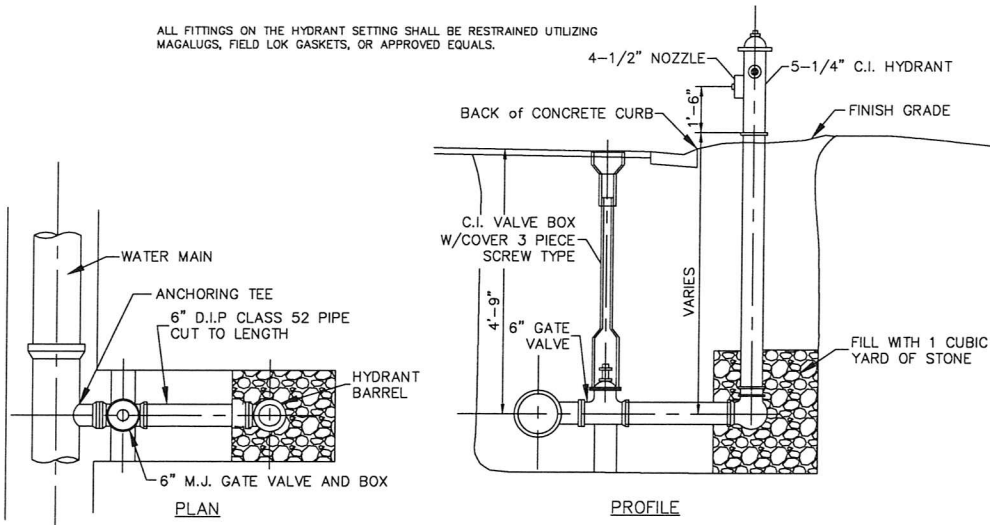
Email Address

Edgefield Area Phase 1 Water Main Replacement - TAG 576
Water Department

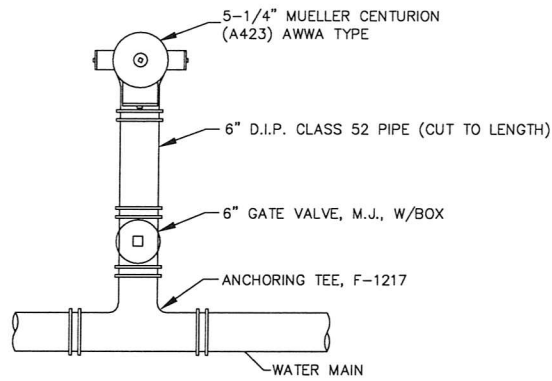
Notification:

This addendum is to notify all potential bidders that Sheet 29 of the project plans included in the original bid posting for the Edgefield Area Phase 1 Water Main Replacement - TAG 576 will be replaced with the attached Sheet 29.

ALL FITTINGS ON THE HYDRANT SETTING SHALL BE RESTRAINED UTILIZING MAGALUGS, FIELD LOK GASKETS, OR APPROVED EQUALS.



HYDRANT SETTING (C71)



HYDRANT SETTINGS CONSIST OF HYDRANT, VALVE, VALVE BOX, FITTINGS AND MATERIALS SHOWN OR SPECIFIED WHICH ARE NEEDED FOR PROPER INSTALLATION.

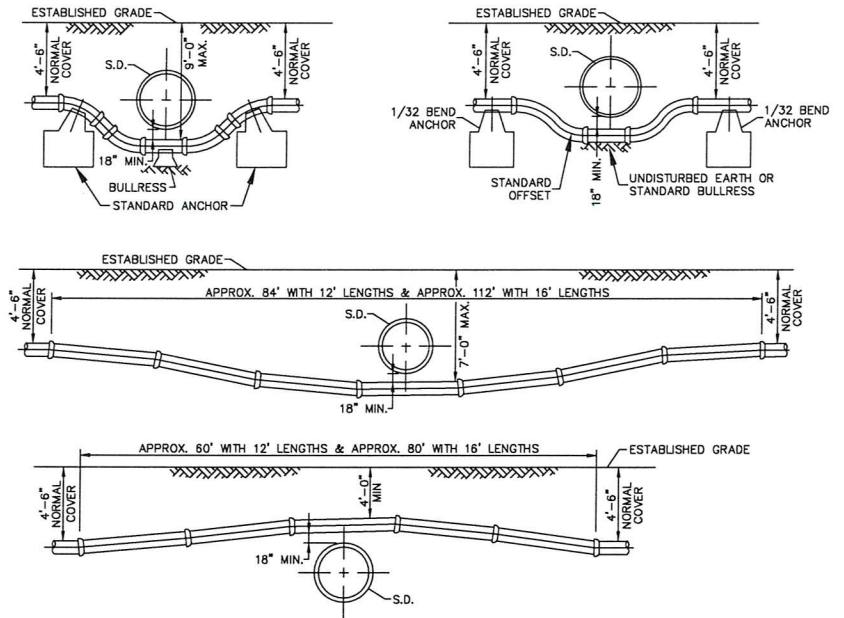
SEE SPECIFICATIONS FOR MORE INFORMATION ABOUT MATERIALS, SETTING HYDRANTS AND DRAINAGE REQUIREMENTS.

IF RESTRAINED JOINT FITTINGS CANNOT BE USED, (2) TIE RODS AND (4) EYE BOLTS WITH NUTS AND WASHERS MUST BE USED.

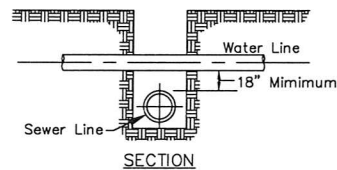
FIGURES SUCH AS F-1217 INDICATE CLOW CORPORATION STYLES. USE THIS BRAND OR APPROVED EQUAL.

ALL HYDRANTS ARE TO BE INSTALLED WITH THE PUMPER NOZZLE FACING THE STREET.

HYDRANT CONNECTION (C70)

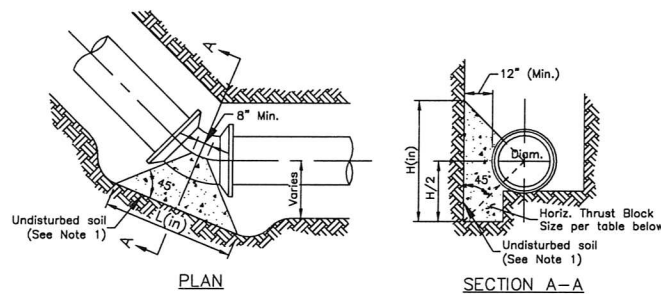


WATER MAIN CROSSING STORM DRAIN (C187)
REV 10/22/2013



- NOTES:
- If joint on water main is within limits of sewer trench, install mechanical bell joint clamp.
 - If clearance is less than 18":
 - For Storm sewers, concrete encase the storm sewer pipe, 6 ft. on each side of water main.
 - For Sanitary sewers, replace the sanitary sewer pipe with PVC C900 pipe, 10 ft. on each side of water main. Approved couplings shall be used to tie onto the existing sewer. Cost for the above shall be included in the unit prices bid for all items in the proposal.
 - In no case shall the sewer pipe contact any water main, service line or appurtenance.

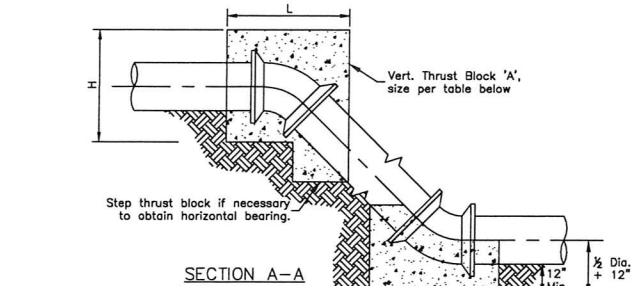
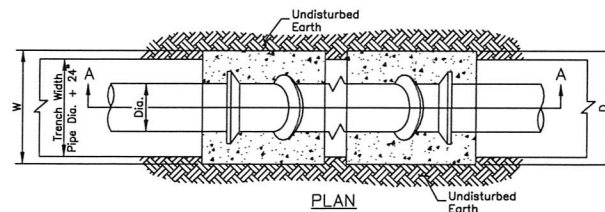
VERTICAL WATER MAIN CLEARANCE (C186)



- NOTES:
- Thrust blocks shall be placed against undisturbed soil. Where it is not possible, the fill between the bearing surface and undisturbed soil must be compacted to at least 90% Standard Proctor density.
 - Pipe, bolts, nuts and fittings shall be wrapped with polyethylene film to prevent corrosion and concrete adhesion.
 - All joints to be Megalugged.

SIZE OF PIPE	DEGREE OF BEND						
	11 1/4°		22 1/2°		45°		
	L	H	L	H	L	H	
6"	16	8	16	10	24	14	32
8"	16	10	21	14	31	18	44
12"	21	16	32	20	48	26	66
16"	29	20	42	28	66	34	90
20"	37	24	50	36	73	48	107
24"	46	28	64	40	93	54	128

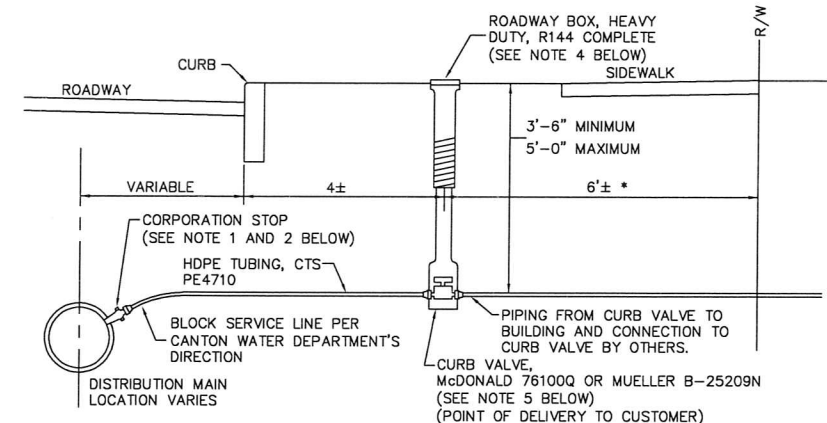
HORIZONTAL THRUST BLOCKS (C130)



- NOTES:
- Pipe, bolts, nuts and fittings shall be wrapped with polyethylene film to prevent corrosion and concrete adhesion.
- Thrust blocks to be centered on bend horizontally.
- Thrust block 'A' shall be off centered on bend vertically to shift the majority of the block above the fitting.
- All joints to be Megalugged.
- Concrete thrust blocks to be placed on all vertical bends.

SIZE OF PIPE	DEGREE OF BEND											
	11 1/4°				22 1/2°				45°			
	L	W	H	V (cy)	L	W	H	V (cy)	L	W	H	V (cy)
6"	12	48	18	0.2	15	43	36	0.5	28	55	24	0.8
8"	12	63	24	0.4	18	57	34	0.7	36	57	33	1.4
12"	20	84	36	0.8	27	76	37	1.7	48	62	51	3.1
16"	31	105	48	1.6	39	97	39	3.0	65	65	65	5.6
20"	40	126	60	2.4	51	118	41	4.8	82	74	68	8.8
24"	48	147	72	3.5	63	139	43	7.2	99	81	72	12.7

CONCRETE THRUST BLOCKS FOR VERTICAL BENDS ON WATER MAINS (POURED IN PLACE, CLASS C) (C147)



- NOTES:
- A 1" SERVICE ON A 6" OR 8" MAIN SHALL CONSIST OF A 3/4" TAP WITH A 3/4" X 1" CORP.
 - CORPORATION STOP AND ASSEMBLY SHALL BE AS FOLLOWS:
 - 3/4" X 1" CORP. STOP ON DIP (6" AND 8" MAINS): INSTALL AT THE 2:00 POSITION, A MUELLER B-25008 CORPORATION STOP WITH A COMPRESSION CONNECTION.
 - 3/4" X 1" CORP. STOP ON PVC C909 (6" AND 8" MAINS): INSTALL AT THE 2:00 POSITION, A MUELLER B-25008 CORPORATION STOP WITH A COMPRESSION CONNECTION AND A FORD, STAINLESS STEEL, EPOXY COATED TAPPING SADDLE (FC202 STYLE).
 - 1" CORP. STOP ON DIP (MAINS 12" AND UP): INSTALL AT THE 2:00 POSITION, A MUELLER B-25008 CORPORATION STOP WITH A COMPRESSION CONNECTION.
 - 1" CORP. STOP ON PVC C909 (MAINS 12" AND UP): INSTALL AT THE 2:00 POSITION, A MUELLER B-25008 CORPORATION STOP WITH A COMPRESSION CONNECTION AND A FORD, STAINLESS STEEL, EPOXY COATED TAPPING SADDLE (FC202 STYLE).
 - 1 1/2" CORP. STOP (ALL MAIN SIZES): INSTALL AT THE 2:00 POSITION, A MUELLER B-25008 CORPORATION STOP WITH A COMPRESSION CONNECTION AND A FORD, STAINLESS STEEL, EPOXY COATED TAPPING SADDLE (FC202 STYLE).
 - 1 1/2" X 2" CORP. STOP (ALL MAIN SIZES): INSTALL AT THE 2:00 POSITION, A MUELLER B-25008 CORPORATION STOP WITH A COMPRESSION CONNECTION AND A FORD, STAINLESS STEEL, EPOXY COATED TAPPING SADDLE (FC202 STYLE).
 - A SERVICE CLAMP MUST BE USED WHEN THE MAIN SIZE IS 2 INCH OR SMALLER.
 - HEAVY DUTY VALVE BOXES, COMPLETE, MUST BE USED IN PLACE OF ROADWAY BOXES WHEN THE CURB VALVE IS LOCATED IN ROADWAYS OR ASPHALT DRIVES.
 - WHEN CONNECTING A NEW 1" SERVICE TO AN EXISTING 3/4" SERVICE, THE CURB VALVE SIZE SHALL BE A 1" X 3/4" REDUCING CURB VALVE.
 - BRASS REDUCING BUSHINGS OR SWIVEL ELLS WILL NOT BE ALLOWED.
 - APPROVED EQUALS MAY BE USED IN PLACE OF SPECIFIED ITEMS.

TYPICAL WATER SERVICE (C94)
REV 4/12/2021

MISCELLANEOUS DETAILS

EDGEFIELD AVE NW AREA WATER MAIN REPLACEMENT PHASE 1

Printed By: The City of Canton Water Department
2664 Harrisburg Rd. N.E. • Canton, Ohio 44705
(330) 469-3310