

**Addendum Six**  
**Focused SSES and Rehabilitation South**  
**Chickamauga Creek 1 – Phase 2**  
**CONTRACT NUMBER W-17-021-201**  
**Revision to Environmental Features and Construction Limits**

Revision to Drawing Sheet No. 7 of 14 (attached figure). Revisions include:

- Addition of wetland area (outside Construction Limits) between STA 44+00 and STA 46+00.
- Addition of wetland area (outside Construction Limits) between STA 35+00 and STA 39+00. Wetland area crosses through Access Limits shown on Drawings between STA 37+00 and STA 38+00.
- Addition of existing stream near STA 40+00.
- Construction Limits revised at existing stream crossing. Contractor will not be permitted to impact existing stream.

**Contract Documents**

**The bid opening is being extended until August 13, 2019. Same location and time.**

August 2, 2019

---

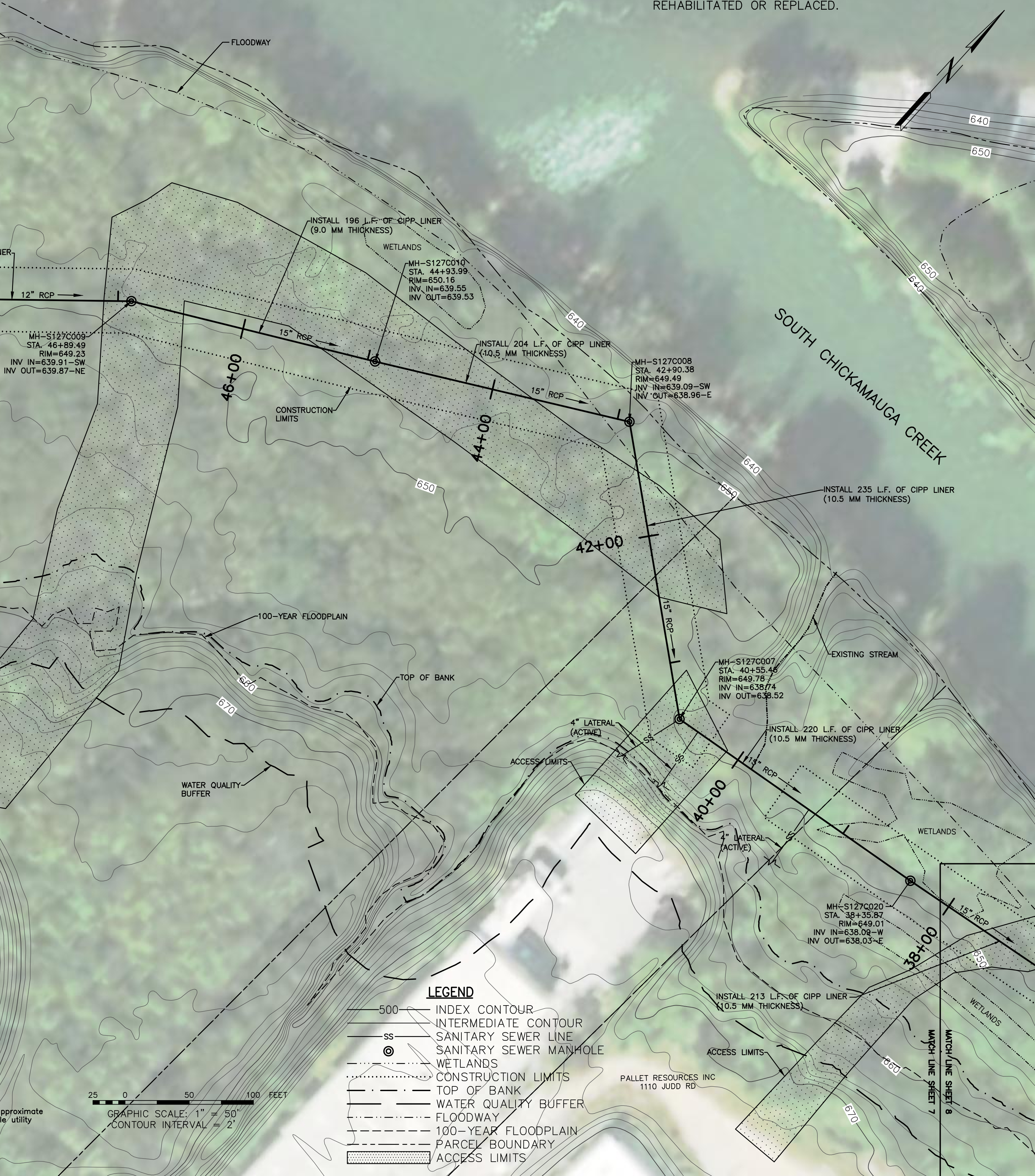
/s/ Justin C. Holland, Administrator  
City of Chattanooga  
Department of Public Works



TENNESSEE RIVER

**MANHOLE NOTE:**

ALL MANHOLES ON LINE 'A' ARE TO BE REHABILITATED OR REPLACED. REFER TO MANHOLE SUMMARY TABLE IN THE GENERAL NOTES FOR IMPROVEMENT TYPE. CONTRACTOR SHALL INSTALL A NEW WATER TIGHT FRAME AND COVER (IN ACCORDANCE WITH CITY OF CHATTANOOGA STANDARD DRAWING NO. SD-301.03) ON ALL MANHOLES TO BE REHABILITATED OR REPLACED.



**LEGEND**

- 500 — INDEX CONTOUR
- INTERMEDIATE CONTOUR
- SS — SANITARY SEWER LINE
- ⊙ SANITARY SEWER MANHOLE
- WETLANDS
- CONSTRUCTION LIMITS
- TOP OF BANK
- WATER QUALITY BUFFER
- FLOODWAY
- 100-YEAR FLOODPLAIN
- PARCEL BOUNDARY
- ACCESS LIMITS

25 0 50 100 FEET

GRAPHIC SCALE: 1" = 50'  
CONTOUR INTERVAL = 2'

Approximate utility

PALLET RESOURCES INC  
1110 JUDD RD

MATCH LINE SHEET 7  
MATCH LINE SHEET 8