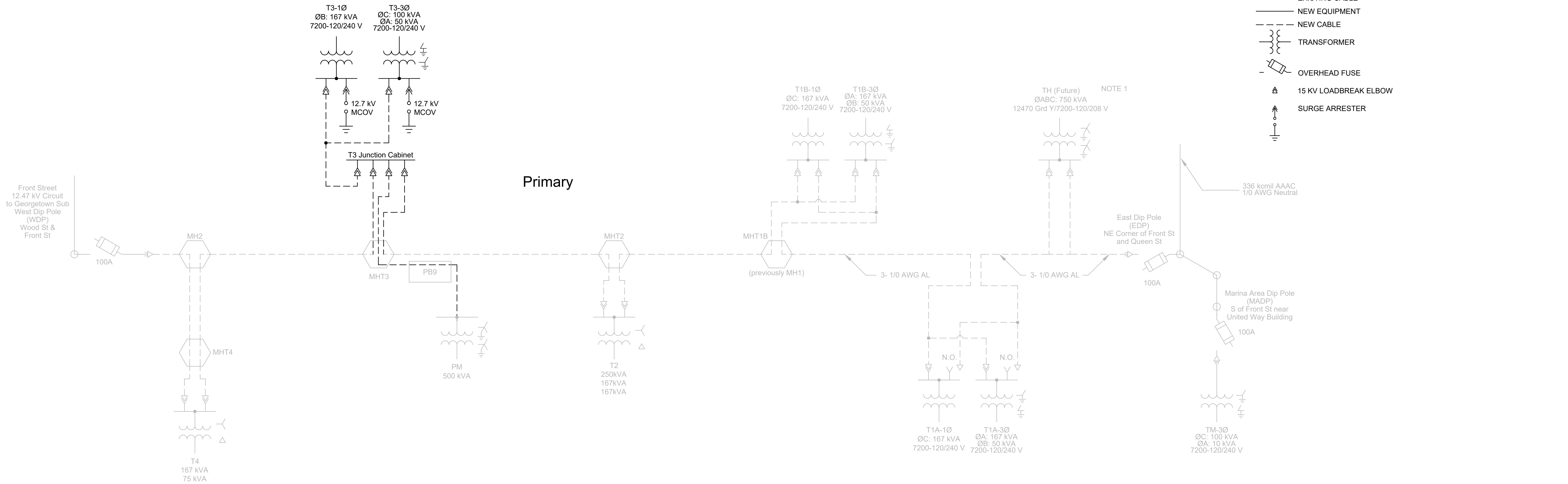


NOTES:

1. TRANSFORMER TO BE INSTALLED LATER BY OWNER. PRIMARY CONDUCTORS ARE IN TEMPORARY ELBOW JUNCTION CABINET.
2. 3Ø CIRCUIT TO 601 FRONT STREET NOT IN USE. CONDUCTORS ARE DEAD-ENDED IN SECONDARY PEDESTAL AT BASE OF OVERHEAD 1Ø SERVICE DIP POLE.

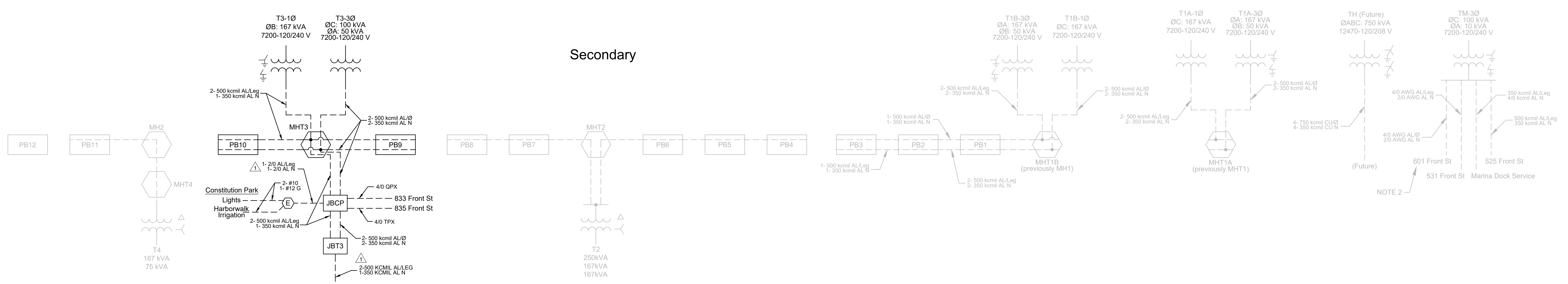
LEGEND:

- EXISTING EQUIPMENT
- - - EXISTING CABLE
- NEW EQUIPMENT
- - - NEW CABLE
- TRANSFORMER
- OVERHEAD FUSE
- ▲ 15 KV LOADBREAK ELBOW
- ⬆ SURGE ARRESTER



Primary

Secondary



<p>PRELIMINARY NOT TO BE USED FOR CONSTRUCTION</p> <p>REVISION 12/13/22</p>		<p>CITY OF GEORGETOWN GEORGETOWN, SC FRONT ST ELECTRIC UPGRADE - PH. 2 ONE-LINE DIAGRAM NEW</p>	
<p>UTEC UTILITY TECHNOLOGY ENGINEERS - CONSULTANTS, PLLC P.O. Box 2629 • Asheboro, North Carolina • 27204</p>		<p>DWG. NO. E2100-2 SCALE: NONE JOB NO. 220901 SHEET NO. 2 OF 2</p>	
NO.	REVISIONS	DATE	
1	ADDENDUM 1	12/15/22	
0	BID ISSUE	12/01/22	

Dec 14, 2022, 2:59pm X:\Georgetown\Phase 2\2100-2_121322\One-Line New Rev.dwg Layout: E2100-2