

**HIGHLANDS COUNTY BOARD OF COUNTY
COMMISSIONERS (HCBCC)
PURCHASING DIVISION
600 S. Commerce Ave
Sebring, FL 33870
(863) 402-6500**

DATE: September 13, 2022

Quote NO. FWQ 22-042 ADDENDUM No. 1

Project.: Lawn Care, Landscaping and Maintenance, Irrigation for Placid Lakes Special Benefit District

The following represents clarification, additions, deletions, and/or modifications to the above referenced solicitation. This addendum shall hereafter be regarded as part of the solicitation. Items not referenced herein remain unchanged. Words, phrases or sentences with a strikethrough represent deletions to the original solicitation. Underlined words and bolded, phrases or sentences represent additions to the original solicitation, as applicable.

Revision of Appendix A.

By this Addendum the County is revising Appendix A as follows:

- **Removing** the Appendix A Service Map-~~Sun N Lakes of Lake Placid~~ Special Benefit District and
- **Adding** Appendix A Service Maps **Placid Lakes Special Benefit District** attached here in

Questions and Answers

Q1 Would it be possible to receive a copy of the bid tabulation for the last time 22-042-LKD: Lawn Care, Landscaping and Maintenance Irrigation for Placid Lakes Special Benefit District was open for bidding?

A1 See attached FWQ 22-001-Award Tabulation

Attachments: **FWQ 22-001-Award Tabulation**

REVISED "APPENDIX A"

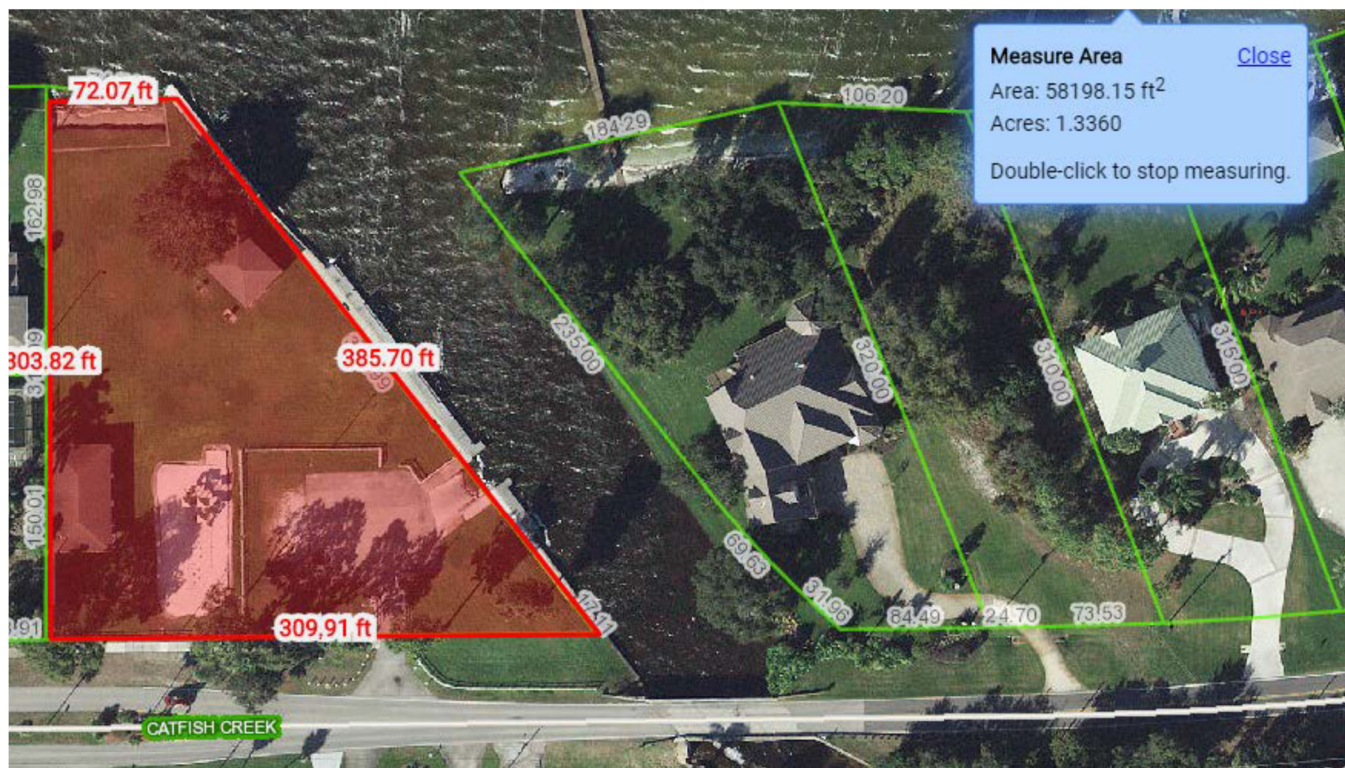
Service Maps Placid Lakes Special Benefit District

Placid Lakes Community Center to include side lot from the south side of convenience store parking lot South to Washington Boulevard everything within the street boundaries where the white fence exists.

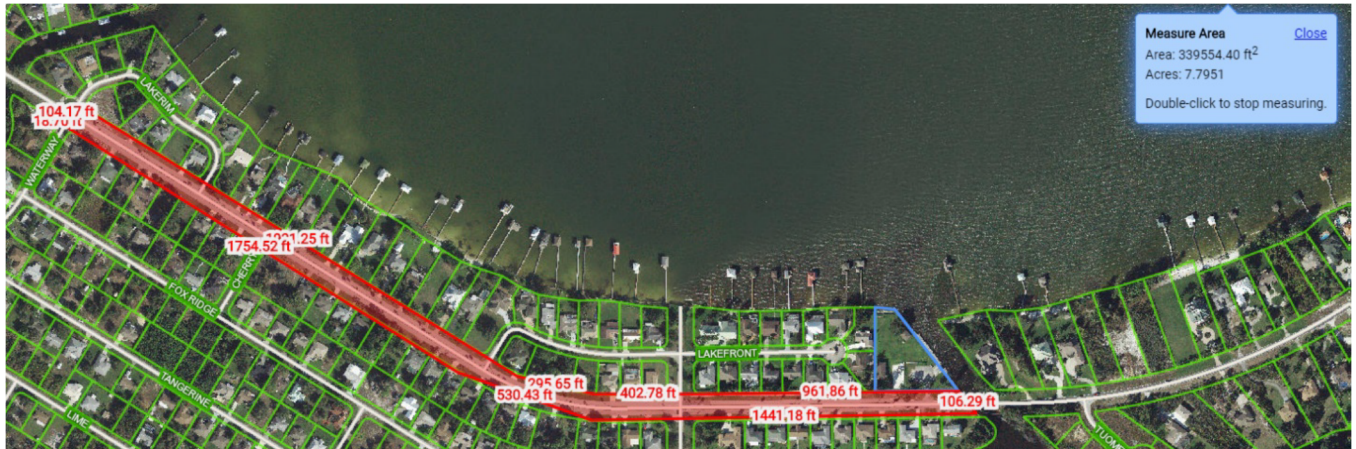


Tobler Park and Boat Ramp; from fence on west side of pavilion to canal and from street North to the lake water, mow grass and edge sidewalks. (285 ft. long X 234 ft.)

Mowing of Shoreline at Tobler Park. Area between mowed surface and water's edge should be maintained with weed eater type equipment at a height not to exceed 10-12 inches.



Catfish Creek Road ROW to include median Strip from bridge to end of median (0.4 mile); approximately 2.7 acres of mowing area.



Placid Lakes Boulevard to include from Catfish Creek Road to Island Parkway (1.7 miles) Approximately 40' on either side of road; approximately 16 acres of mowing area.

Mow one width wide around the four benches where the grass and weeds exist.

Mow the west side and the east side of this area where necessary (home owners usually mow the east

side in front of their home).



Island Parkway to include the median between the Island Parkway Streets from Placid Lakes Boulevard

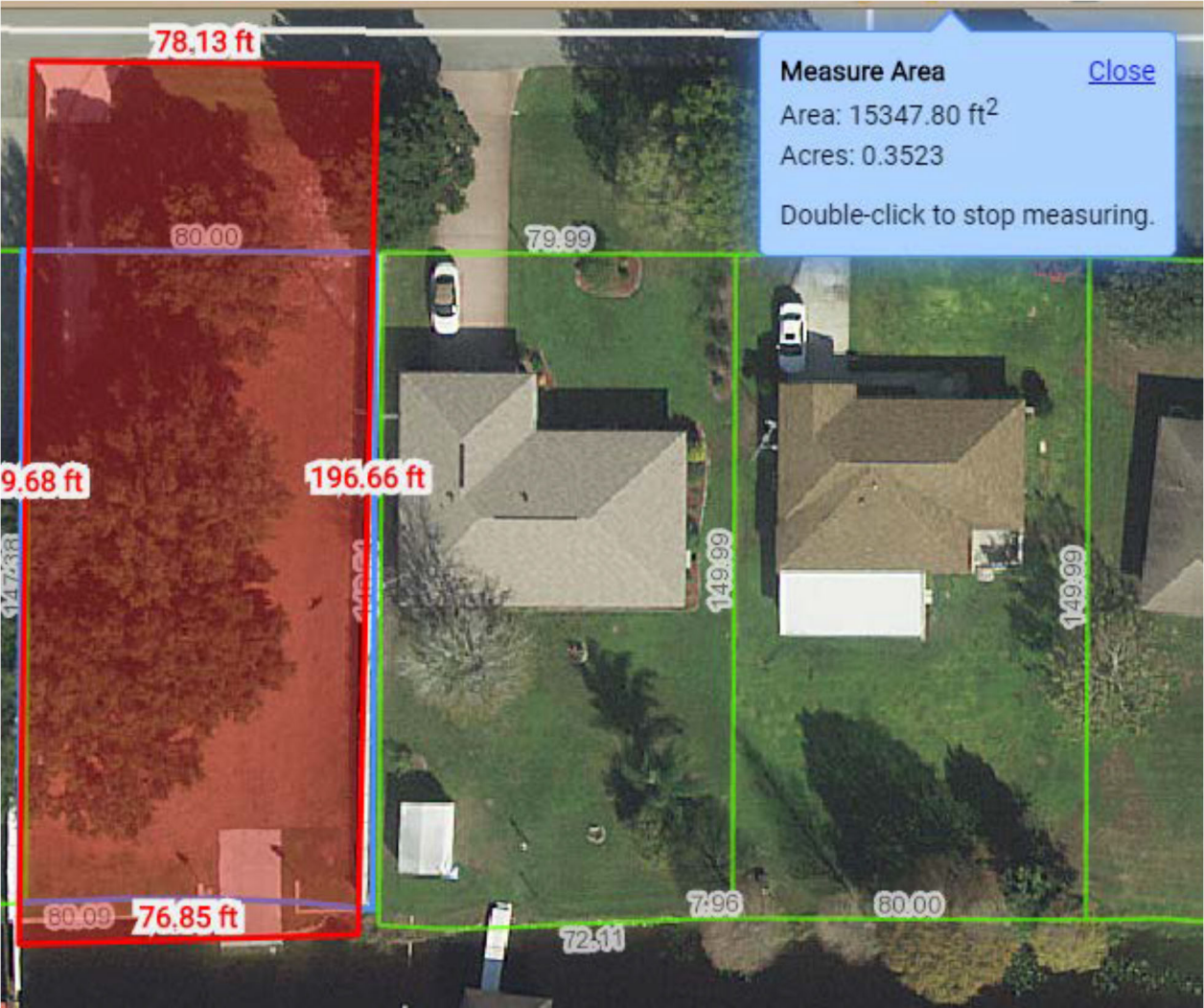
east to the crossover (64 ft X 1,150 ft)



All the Right Of Way (ROW) of vacant lot across from Island Parkway sign.



Lake August Boat Ramp at 1634 WASHINGTON Boulevard (LOT 35 BLOCK 100). Area between mowed surface and water's edge should be maintained with weed eater type equipment at a height not to exceed 10-12 inches.



Measure Area [Close](#)

Area: 5973.91 ft²
Acres: 0.1371

Double-click to stop measuring.

ROW along vacant lot next to median on Washington Blvd.





HIGHLANDS COUNTY
BOARD OF COUNTY COMMISSIONERS
Purchasing Division

TABULATION OF FORMAL WRITTEN QUOTES (FWQ)

FWQ 22-001
Lawn Care for Placid Lakes, SBD

October 7th 2021

Vendor	Price per mo. Lawn Service	Price per mo. Flowerbed Service	Hourly Rate for repair	Responsive Y/N	WMOB Y/N	LOCAL PREFERENCE Y/N
The Cutting Edge LLC	\$2500	\$500	\$50	Y	N	Y
TWQ LLC	\$4000	\$525	\$65	Y	N	Y

Recommended Award:

The Cutting Edge LLC

Project Manager will contact the recommended Vendor for the County approved start date.

Brandon Gunn
Purchasing Agent