

CITY OF BATTLE CREEK

ADDENDUM 1

IFB# 2017-036B

TITLE: AOMF Drainage Improvements

ADDENDUM ISSUED: December 16, 2016

The following changes, additions and deletions have been provided:

Please see attached Addendum 1.

Due date and time remains the same.

THIS ADDENDUM MUST BE ACKNOWLEDGED ON THE OFFER TO CONTRACT FORM IN THE SOLICITATION OR YOUR BID MAY BE DEEMED NON-RESPONSIVE.



Addendum #1

| | |
|-------------------------------------------------|-----------------------------------------------|
| Project name: <u>AOMF Drainage Improvements</u> | Client: <u>W. K. Kellogg Airport</u> |
| Project location: <u>Battle Creek, Michigan</u> | Client representative: <u>Miles Weaver</u> |
| Project number: <u>0228800-155970.01</u> | Mead & Hunt, Inc. manager: <u>Kevin Kunde</u> |
| Date: <u>December 16, 2016</u> | Mead & Hunt Inc. phone: <u>608-273-6380</u> |

TO ALL BIDDERS: You are requested to make all changes and/or additions contained in this Addendum to the Bidding Documents. Failure to acknowledge this Addendum in Proposal shall result in rejection of bid.

I. GENERAL

- A. Bids will be received until 2:00 p.m. local time on December 21, 2016.
- B. The sign-in sheet listing those who attended the Pre-Bid Conference on December 12, 2016 is attached.
- C. The following file drawings from original construction are attached for reference at Contractor's risk. These may not fully reflect actual current conditions and do not necessarily reflect actual final location, depth or extent of underground utilities and feeders. Field verify actual conditions before and during demolitions and excavation as applicable to the work.
 - a. Drawing C-121: Site Utilities and Storm Sewer Plan
 - b. Drawing P-1: Underground Plumbing Plan
 - c. Drawing P-3: Administration Plumbing Plan
 - d. Drawing E-002: Overall Site Lighting Plan
- D. Completion Date Exceptions:
 - a. For the bid option to complete the work by March 3, 2017, it will be acceptable to postpone the following work until weather permits, but no later than April 21, 2017 without prior approval by the airport, provided all other work is complete and fully usable by the specified completion date:
 - i. Installation of the permanent bituminous paving repair (temporary gravel surfacing will be required by the specified completion date).
 - ii. Installation of plantings that are dependent on the weather.

II. DRAWINGS

- A. Drawing C-101:
 - a. Add Keyed Note 40: "Provide cleanout per Detail 11/C301".
 - b. Add a keyed note reference mark "40" to denote cleanouts in the new sub-drain piping (Keyed Note 33) in the following locations:
 - i. North end (near Door 139A), in sidewalk.
 - ii. South end, in sidewalk.
 - iii. West end (near Door 100B), in sidewalk.

- c. Add a keyed note reference mark "40" to denote a cleanout in the new drain trench piping (Keyed Note 38) in the following location:
 - i. North end of new drain trench piping, in landscaping adjacent to sidewalk.
- d. Keyed Note 34: Change to read: "Remove and replace existing curb/gutter and paving as necessary. Curb/gutter shall be saw-cut and removed to the nearest existing joint. Paving shall be saw-cut to provide a constant width patch with square edges abutting new paving. Re-cut and remove additional pavement to a constant width just prior to placement of permanent pavement patch as needed to remove any edges or pavement that are damaged or cracked since the original cut.

B. Drawing C-301:

- a. Detail 10: Move the '18" MIN.' dimension shown under the sidewalk to the right to indicate the filter fabric extending a minimum 18" below the new base course material.
- b. Details 9 & 10: Delete the perforation mark at the top of the perforated drain pipe. Perforations will be in the bottom half of the pipe (i.e. 'holes down' as noted).
- c. Detail 11: Provide a cleanout plug, and frost sleeve with cleanout frame and lid on the vertical leg of the cleanout pipe, as shown on the attached detail "3/C-303: Yard Cleanout (YCO)".

III. SPECIFICATIONS

A. Section 334600 – Subdrainage System

- a. Paragraph 2.1, B., 3., a.: Change "SDR 35 max." to "SDR 26 max."

Attachments:

Drawing C-121: Site Utilities and Storm Sewer Plan

Drawing P-1: Underground Plumbing Plan

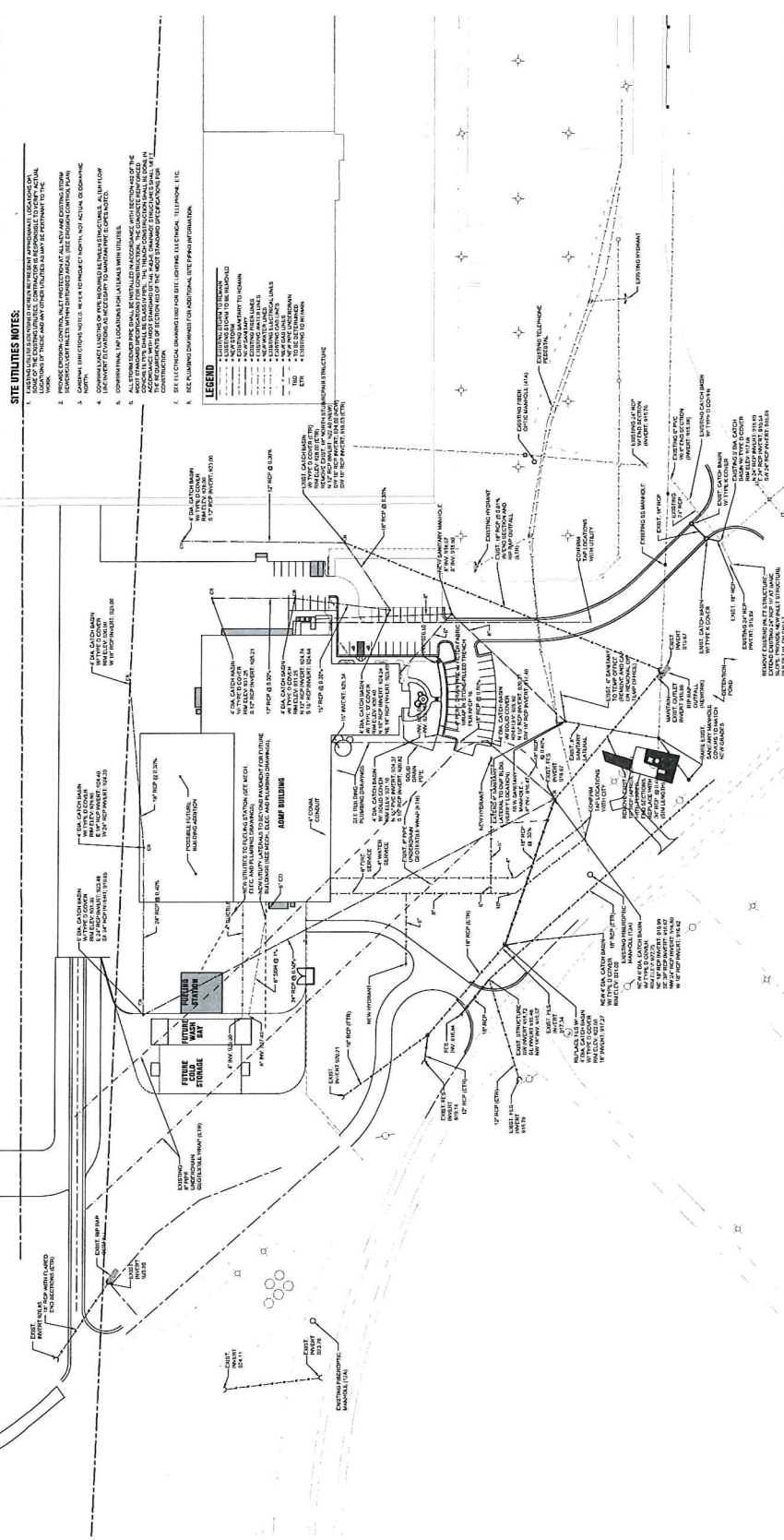
Drawing P-3: Administration Plumbing Plan

Drawing E-002: Overall Site Lighting Plan

Detail 3/C-303: Yard Cleanout (YCO)

Pre-Bid Conference sign-in sheet

END OF ADDENDUM



CAUTION: THE DRAWING IS PREPARED FOR GENERAL REFERENCE ONLY. IT IS NOT TO BE USED FOR CONSTRUCTION OR AS A BASIS FOR ANY OTHER DESIGN OR ACTION. THE USER SHALL BE RESPONSIBLE FOR VERIFYING THE ACCURACY OF THE INFORMATION SHOWN ON THIS DRAWING. THE USER SHALL BE RESPONSIBLE FOR OBTAINING ALL NECESSARY PERMITS AND APPROVALS FROM THE APPROPRIATE AGENCIES.



SITE UTILITIES AND STORM SEWER PLAN

DATE: 07/26/2017

TIME: 10:00 AM

DRAWN BY: JACOB

CHECKED BY: JACOB

SCALE: AS SHOWN

PROJECT NO: 17-0000

DATE: 07/26/2017

TIME: 10:00 AM

DRAWN BY: JACOB

CHECKED BY: JACOB

SCALE: AS SHOWN

PROJECT NO: 17-0000

DATE: 07/26/2017

TIME: 10:00 AM

DRAWN BY: JACOB

CHECKED BY: JACOB

SCALE: AS SHOWN

PROJECT NO: 17-0000



MEAD & HUNT, INC.
 15551 SOUTH AIRPORT ROAD
 BATTLE CREEK, MI 49315
 (517) 685-1100
 www.mh-engineers.com



Professional Engineer
 State of Michigan
 License No. 28000
 Date of Issue: 12/31/2014
 Expiration Date: 12/31/2018

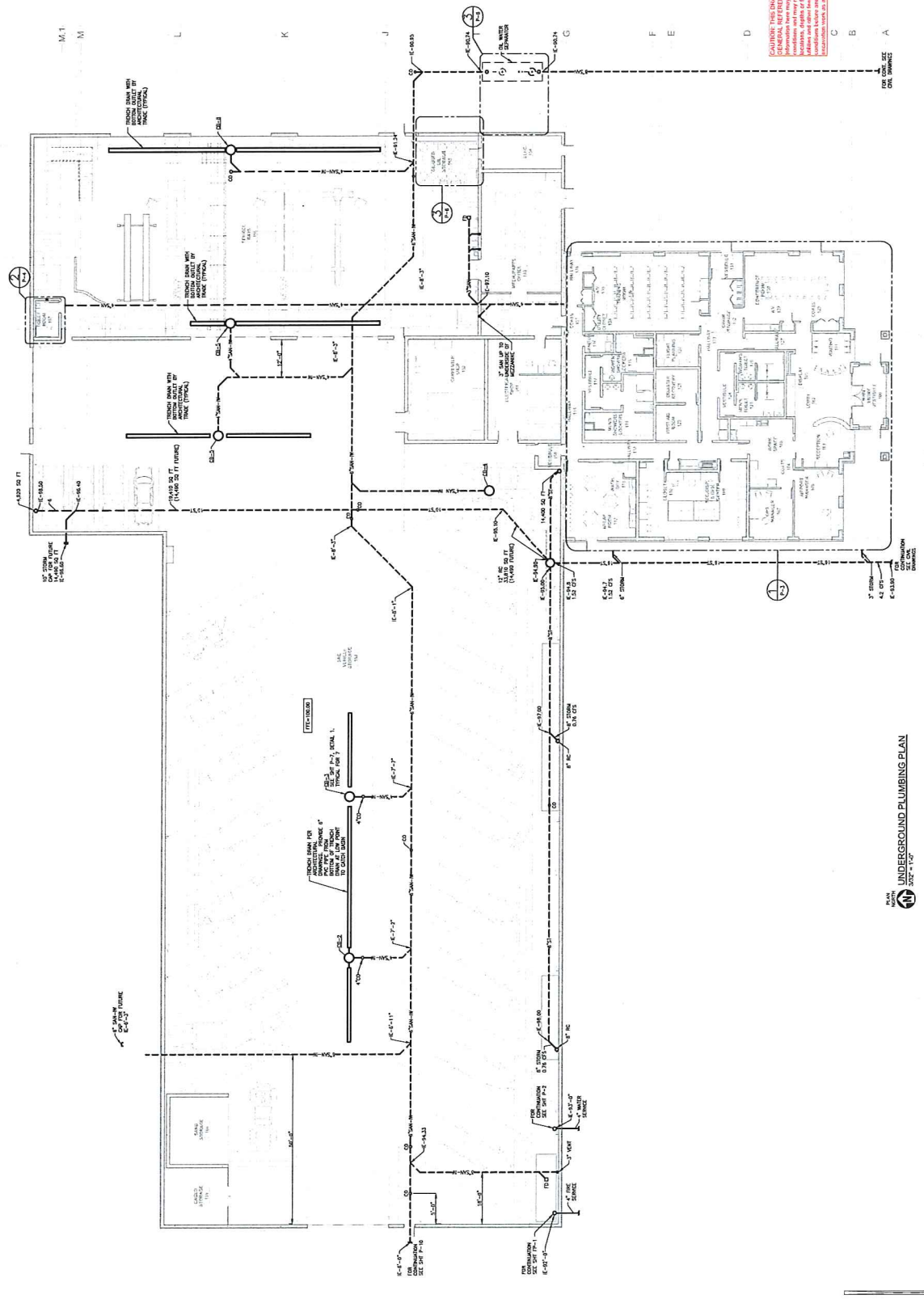
W.K. KELLOGG AIRPORT
 ADMINISTRATION, OPERATIONS & MAINTENANCE FACILITY
 15551 SOUTH AIRPORT ROAD
 BATTLE CREEK, MI 49315

DATE: 03/08/2018
 TIME: 10:54 AM
 DRAWN BY: CDE
 CHECKED BY: CDE

UNDERGROUND
 PLUMBING PLAN

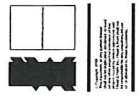
P-1

WARNING: THE DRAWING PROVIDED FOR RECORD PURPOSES ONLY. IT IS NOT TO BE USED FOR CONSTRUCTION. ANY INFORMATION FROM THIS DRAWING SHOULD BE VERIFIED AGAINST THE ORIGINAL DRAWING. ANY CHANGES TO THIS DRAWING SHOULD BE APPROVED BY THE ORIGINAL DESIGNER.



1 2 2.1 3 4 4.9 5 6

UNDERGROUND PLUMBING PLAN
 1/8" = 1'-0"



**W.K. KELLOGG AIRPORT
ADMINISTRATION, OPERATIONS & MAINTENANCE FACILITY**
1524 SOUTH AIRPORT ROAD
BATTLE CREEK, MI 49315

**RECORD
DRAWINGS**

DATE: 06/11/2008
BY: JAMES D. DAVIS
PROJECT NO.: 08010
DRAWING NO.: 08010-0010

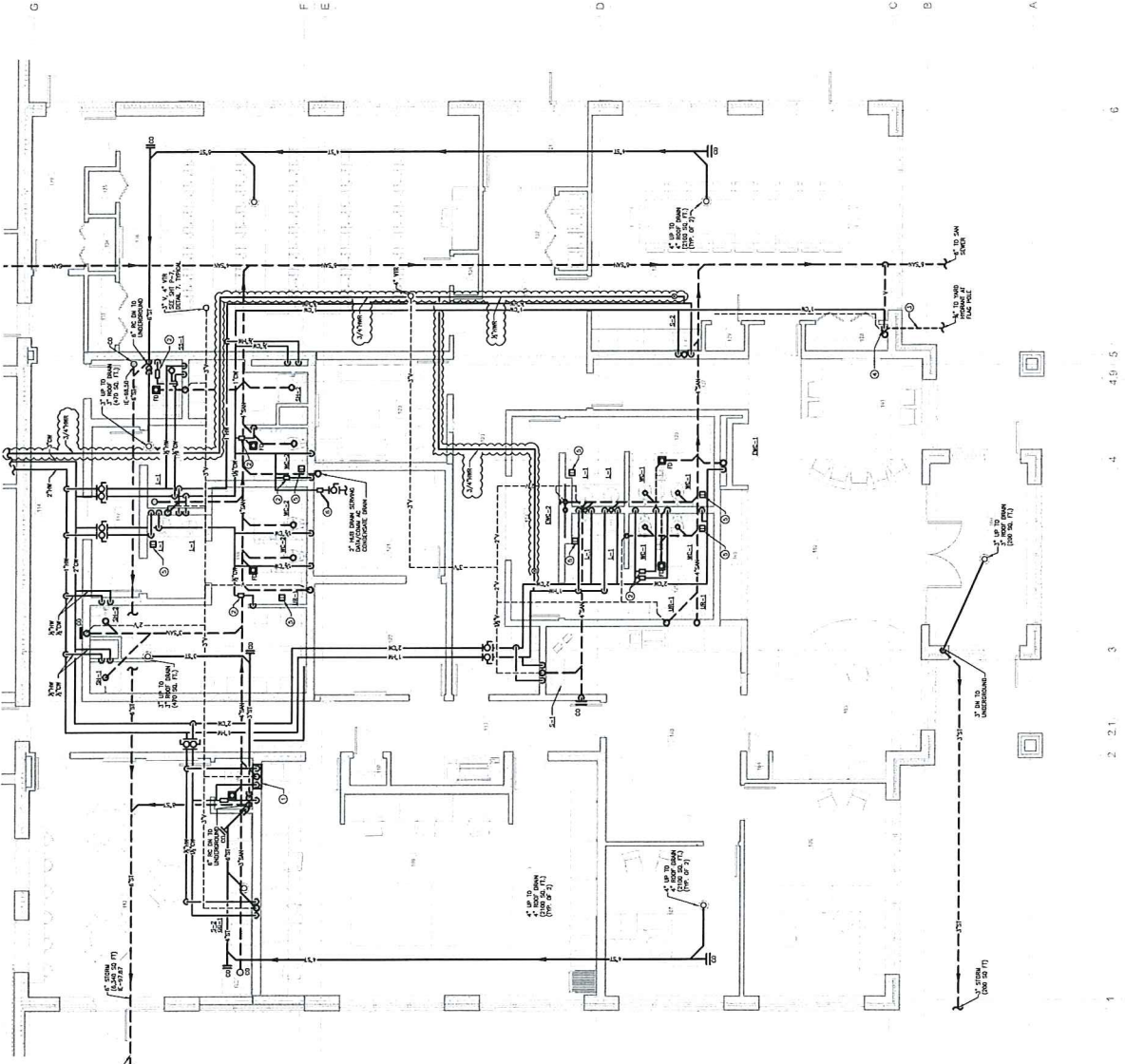
**ADMINISTRATION
PLUMBING PLAN**

ROOM LEGEND

| | |
|-----|------------|
| 100 | RESTROOM |
| 101 | RESTROOM |
| 102 | LABORATORY |
| 103 | RECEPTION |
| 104 | OFFICE |
| 105 | OFFICE |
| 106 | OFFICE |
| 107 | OFFICE |
| 108 | OFFICE |
| 109 | OFFICE |
| 110 | OFFICE |
| 111 | OFFICE |
| 112 | OFFICE |
| 113 | OFFICE |
| 114 | OFFICE |
| 115 | OFFICE |
| 116 | OFFICE |
| 117 | OFFICE |
| 118 | OFFICE |
| 119 | OFFICE |
| 120 | OFFICE |
| 121 | OFFICE |
| 122 | OFFICE |
| 123 | OFFICE |
| 124 | OFFICE |
| 125 | OFFICE |
| 126 | OFFICE |
| 127 | OFFICE |
| 128 | OFFICE |
| 129 | OFFICE |
| 130 | OFFICE |
| 131 | OFFICE |
| 132 | OFFICE |
| 133 | OFFICE |
| 134 | OFFICE |
| 135 | OFFICE |
| 136 | OFFICE |
| 137 | OFFICE |
| 138 | OFFICE |
| 139 | OFFICE |
| 140 | OFFICE |
| 141 | OFFICE |
| 142 | OFFICE |
| 143 | OFFICE |
| 144 | OFFICE |
| 145 | OFFICE |
| 146 | OFFICE |
| 147 | OFFICE |
| 148 | OFFICE |
| 149 | OFFICE |
| 150 | OFFICE |
| 151 | OFFICE |
| 152 | OFFICE |
| 153 | OFFICE |
| 154 | OFFICE |
| 155 | OFFICE |
| 156 | OFFICE |
| 157 | OFFICE |
| 158 | OFFICE |
| 159 | OFFICE |
| 160 | OFFICE |
| 161 | OFFICE |
| 162 | OFFICE |
| 163 | OFFICE |
| 164 | OFFICE |
| 165 | OFFICE |
| 166 | OFFICE |
| 167 | OFFICE |
| 168 | OFFICE |
| 169 | OFFICE |
| 170 | OFFICE |
| 171 | OFFICE |
| 172 | OFFICE |
| 173 | OFFICE |
| 174 | OFFICE |
| 175 | OFFICE |
| 176 | OFFICE |
| 177 | OFFICE |
| 178 | OFFICE |
| 179 | OFFICE |
| 180 | OFFICE |
| 181 | OFFICE |
| 182 | OFFICE |
| 183 | OFFICE |
| 184 | OFFICE |
| 185 | OFFICE |
| 186 | OFFICE |
| 187 | OFFICE |
| 188 | OFFICE |
| 189 | OFFICE |
| 190 | OFFICE |
| 191 | OFFICE |
| 192 | OFFICE |
| 193 | OFFICE |
| 194 | OFFICE |
| 195 | OFFICE |
| 196 | OFFICE |
| 197 | OFFICE |
| 198 | OFFICE |
| 199 | OFFICE |
| 200 | OFFICE |

- KEYED NOTES**
NOTES THAT ARE NOT RECORDED ON THIS SHEET:
- 1. 1/2" DIA. UP TO 20' HUB
 - 2. 1/2" DIA. UP TO 10' HUB
 - 3. 1/2" DIA. UP TO 5' HUB
 - 4. 1/2" DIA. UP TO 2' HUB
 - 5. 1/2" DIA. UP TO 1' HUB
 - 6. 1/2" DIA. UP TO 6" HUB
 - 7. 1/2" DIA. UP TO 4" HUB
 - 8. 1/2" DIA. UP TO 3" HUB
 - 9. 1/2" DIA. UP TO 2" HUB
 - 10. 1/2" DIA. UP TO 1" HUB
 - 11. 1/2" DIA. UP TO 1/2" HUB
 - 12. 1/2" DIA. UP TO 3/4" HUB
 - 13. 1/2" DIA. UP TO 5/8" HUB
 - 14. 1/2" DIA. UP TO 1/2" HUB
 - 15. 1/2" DIA. UP TO 3/8" HUB
 - 16. 1/2" DIA. UP TO 1/4" HUB
 - 17. 1/2" DIA. UP TO 1/8" HUB
 - 18. 1/2" DIA. UP TO 1/16" HUB
 - 19. 1/2" DIA. UP TO 1/32" HUB
 - 20. 1/2" DIA. UP TO 1/64" HUB

CAUTION: THE DRAWING PROVIDED FOR GENERAL INFORMATION ONLY AND DOES NOT REFLECT EXISTING CONDITIONS AND ANY INFORMATION HEREON MAY BE SUBJECT TO CHANGE WITHOUT NOTICE. THE CONTRACTOR SHALL VERIFY ALL CONDITIONS PRIOR TO CONSTRUCTION. THE CONTRACTOR SHALL BE RESPONSIBLE FOR OBTAINING ALL NECESSARY PERMITS AND APPROVALS PRIOR TO CONSTRUCTION. THE CONTRACTOR SHALL BE RESPONSIBLE FOR OBTAINING ALL NECESSARY PERMITS AND APPROVALS PRIOR TO CONSTRUCTION.



ENLARGED OPERATIONS PLUMBING PLAN



1 2 3 4 5 6

NOT TO SCALE
 ALL DIMENSIONS ARE APPROXIMATE
 ALL CONSTRUCTION SHALL BE IN ACCORDANCE WITH THE LATEST EDITIONS OF THE IBC AND ALL APPLICABLE LOCAL ORDINANCES
 ALL MATERIALS SHALL BE AS SHOWN OR APPROVED BY THE ARCHITECT
 ALL WORK SHALL BE SUBJECT TO THE APPROVAL OF THE LOCAL PERMITS DEPARTMENT

**W.K. KELLOGG AIRPORT
 ADMINISTRATION, OPERATIONS & MAINTENANCE FACILITY**

15551 SOUTH AIRPORT ROAD
 BATTLE CREEK, MI 49015

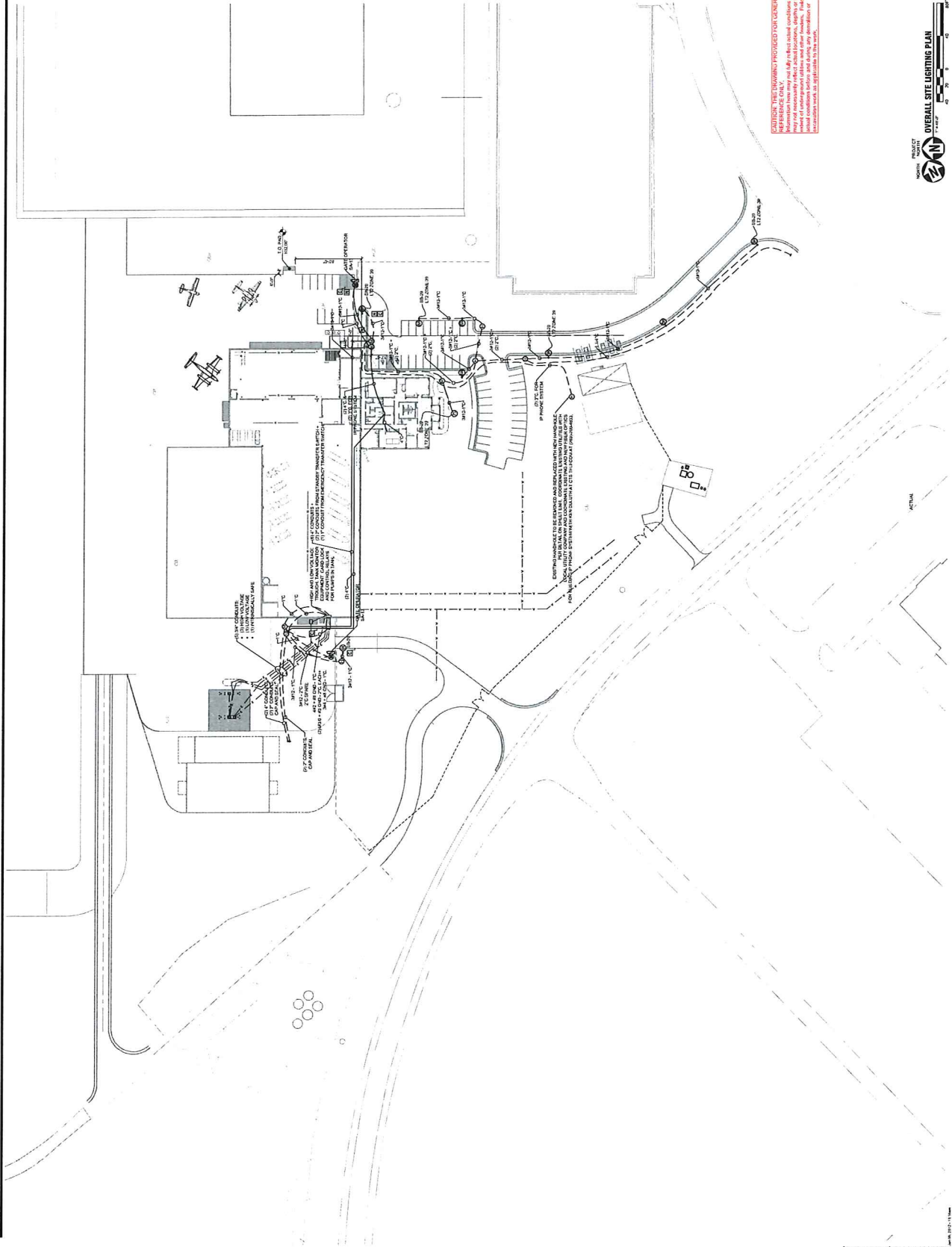
**RECORD
 DRAWINGS**

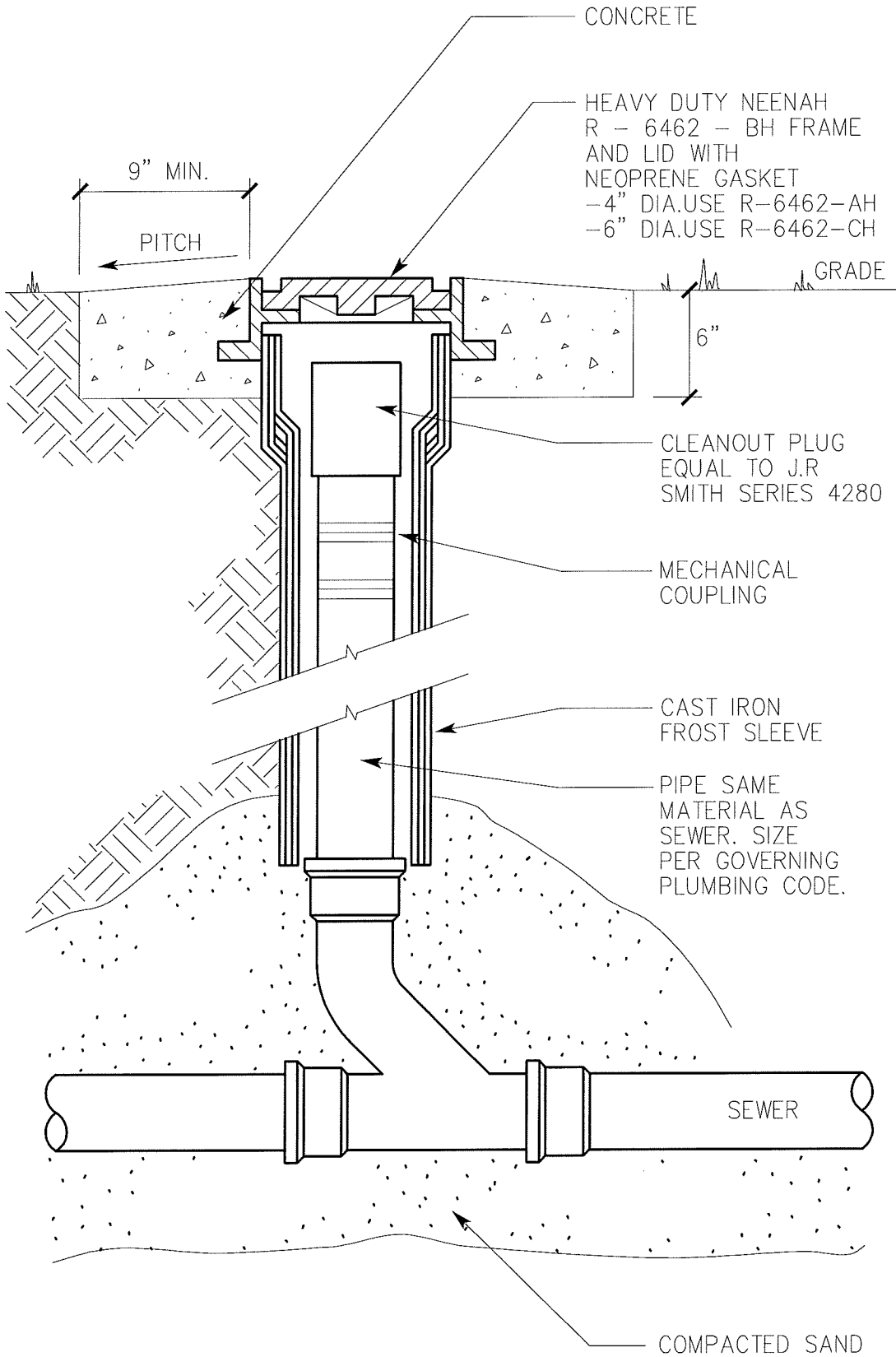
EXISTING AND PROPOSED LIGHTING FIXTURES AND LUMINAIRE DATA SHALL BE PROVIDED FOR THE ARCHITECT'S REVIEW AND APPROVAL. THE ARCHITECT SHALL BE RESPONSIBLE FOR THE ACCURACY OF THE LIGHTING FIXTURE AND LUMINAIRE DATA. THE ARCHITECT SHALL BE RESPONSIBLE FOR THE ACCURACY OF THE LIGHTING FIXTURE AND LUMINAIRE DATA. THE ARCHITECT SHALL BE RESPONSIBLE FOR THE ACCURACY OF THE LIGHTING FIXTURE AND LUMINAIRE DATA.

DATE: 02/28/2018
 TIME: 10:00 AM
 PROJECT: W.K. KELLOGG AIRPORT
 DRAWING: E002

OVERALL SITE LIGHTING PLAN

E002





3
C-303

YARD CLEANOUT (YCO)

NO SCALE



Subject: **AOMF Drainage Improvements: Pre-Bid Conference – 1pm**

Date: **12/12/2016**

| Name | Organization | Phone # | Email Address | Signature |
|--------------|---------------------------------------------|--------------|-----------------------------|------------|
| Miles Weaver | WK Kellogg Airport, City of Battle Creek | 269-966-3470 | mhweaver@battlecreekmi.gov | |
| Caleb Hamlin | HPD | 269-214-7908 | Chamlin@hanteprell.com | |
| DAVE BELL | Hoffman Bros. | 269-209-0412 | davebellhoffmanbrosinc.com | |
| Chris Huff | Purchasing | 269-966-1644 | chuff@battlecreekmi.gov | |
| Megan Murray | WK Kellogg Airport City of Battle Creek | 906-202-3221 | murray@battlecreekmi.gov | |
| Kevin Kunde | Meat & Hunt | 608-443-0511 | kevin.kunde@meatandhunt.com | via phone. |
| | | | | |
| | | | | |
| | | | | |
| | | | | |
| | | | | |
| | | | | |
| | | | | |
| | | | | |
| | | | | |