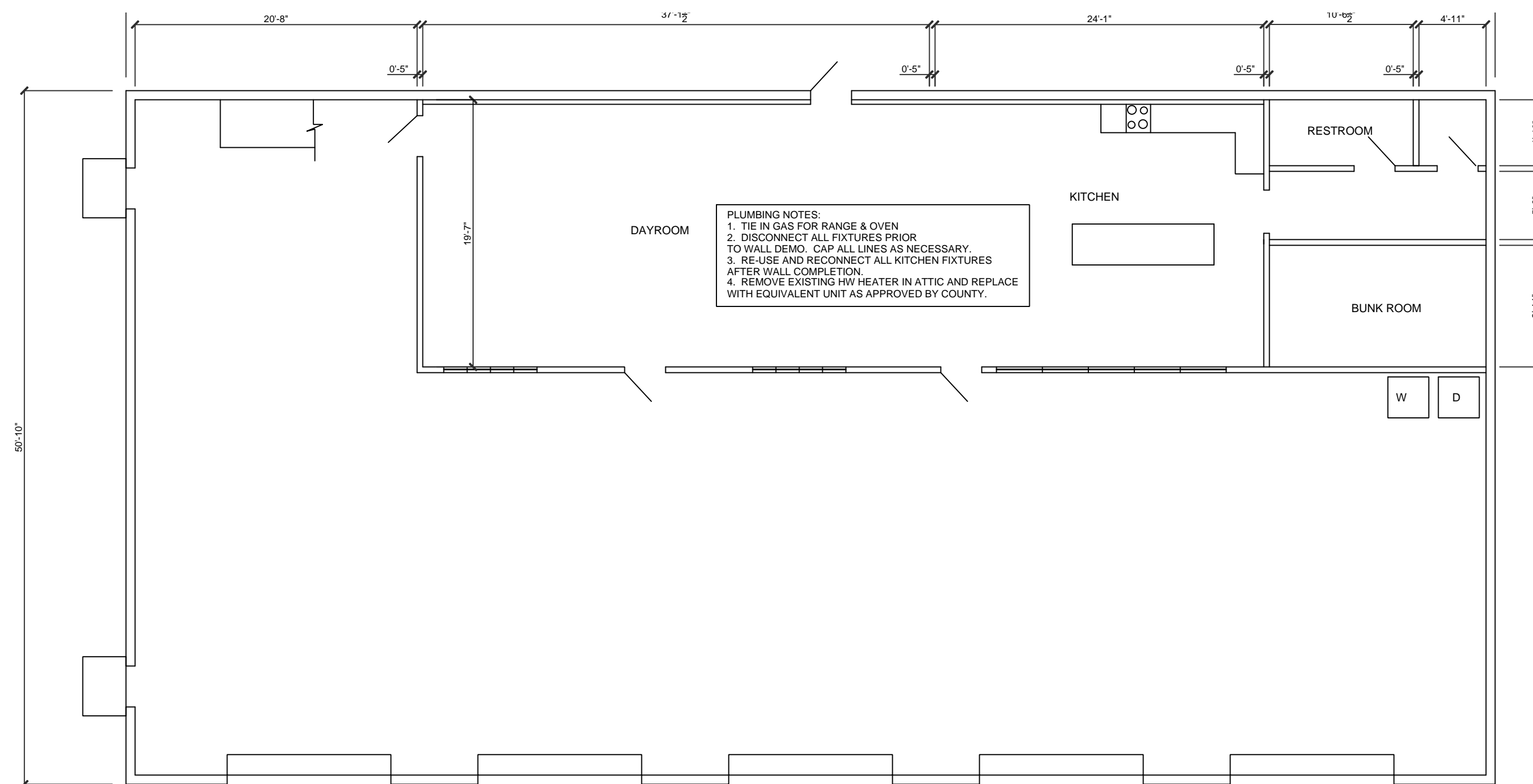


**MECHANICAL NOTES**

SYSTEM SHALL BE A 36,000 BTU MINI-SPLIT UNIT WITH (3) HEADS BY MITSUBISHI OR EQUIVALENT  
ALL HEAD UNITS SHALL BE MOUNTED ON AN EXTERIOR WALL

- 1 - 12,000 BTU HEAD UNIT
- 2 - 9,000 BTU HEAD UNIT

1  
M1.0 HVAC PLAN  
SCALE 1/8" = 1'-0"



2  
M1.0 PLUMBING PLAN  
SCALE 1/8" = 1'-0"

CLIENT:  
OCONEE COUNTY  
PROJECT:  
FIRE STATION #7 RENOVATION

DRAWN BY:  
MM

ISSUE:  
11.06.14

SHEET TITLE:

MECHANICAL & PLUMBING

SHEET NO.

**M1.0**