



**Location**

Oconee County Courthouse

**Address/Description**

23 N Main St, Watkinsville, GA

**Maintenance Intervals**

March 1st - October 31st: No less than twice a month or as required if weather conditions are conducive to the rate of growth.

November 1st - February 28th: Maintenance can be reduced to once a month, but shall include leaf/debris removal from grounds and parking areas.

The information used in these applications were derived from digital databases in the Oconee County GIS. Although we strive to provide the best data we can, we sometimes use data developed by sources outside Oconee County. Therefore, Oconee County cannot accept any responsibility for any errors, omissions, or positional accuracy, and therefore, there are no warranties which accompany this product. Although information from Land Surveys may have been used in the creation of this product, in no way does this product represent or constitute a Land Survey. Users of the information displayed in this map are strongly cautioned to verify all information before making any decisions.

This map was created on Friday, September 11, 2020 by the Oconee County GIS Department. Source project files can be found by searching 'Lawn Care Maintenance RFP Map' in the OCGIS databases.







**Location**

Elections Office

**Address/Description**

10 Court Street, Watkinsville, GA

**Maintenance Intervals**

March 1st - October 31st: No less than twice a month or as required if weather conditions are conducive to the rate of growth.

November 1st - February 28th: Maintenance can be reduced to once a month, but shall include leaf/debris removal from grounds and parking areas.

The information used in these applications were derived from digital databases in the Oconee County GIS. Although we strive to provide the best data we can, we sometimes use data developed by sources outside Oconee County. Therefore, Oconee County cannot accept any responsibility for any errors, omissions, or positional accuracy, and therefore, there are no warranties which accompany this product. Although information from Land Surveys may have been used in the creation of this product, in no way does this product represent or constitute a Land Survey. Users of the information displayed in this map are strongly cautioned to verify all information before making any decisions.

This map was created on Friday, September 11, 2020 by the Oconee County GIS Department. Source project files can be found by searching 'Lawn Care Maintenance RFP Map' in the OCGIS databases.







**Location**

Ward Building

**Address/Description**

3 North 3rd Street, Watkinsville, GA

**Maintenance Intervals**

March 1st - October 31st: No less than twice a month or as required if weather conditions are conducive to the rate of growth.

November 1st - February 28th: Maintenance can be reduced to once a month, but shall include leaf/debris removal from grounds and parking areas.

The information used in these applications were derived from digital databases in the Oconee County GIS. Although we strive to provide the best data we can, we sometimes use data developed by sources outside Oconee County. Therefore, Oconee County cannot accept any responsibility for any errors, omissions, or positional accuracy, and therefore, there are no warranties which accompany this product. Although information from Land Surveys may have been used in the creation of this product, in no way does this product represent or constitute a Land Survey. Users of the information displayed in this map are strongly cautioned to verify all information before making any decisions.

This map was created on Friday, September 11, 2020 by the Oconee County GIS Department. Source project files can be found by searching 'Lawn Care Maintenance RFP Map' in the OCGIS databases.







**Location**

Eagle Tavern

**Address/Description**

26 North Main Street, Watkinsville, GA

**Maintenance Intervals**

March 1st - October 31st: No less than twice a month or as required if weather conditions are conducive to the rate of growth.

November 1st - February 28th: Maintenance can be reduced to once a month, but shall include leaf/debris removal from grounds and parking areas.

The information used in these applications were derived from digital databases in the Oconee County GIS. Although we strive to provide the best data we can, we sometimes use data developed by sources outside Oconee County. Therefore, Oconee County cannot accept any responsibility for any errors, omissions, or positional accuracy, and therefore, there are no warranties which accompany this product. Although information from Land Surveys may have been used in the creation of this product, in no way does this product represent or constitute a Land Survey. Users of the information displayed in this map are strongly cautioned to verify all information before making any decisions.

This map was created on Friday, September 11, 2020 by the Oconee County GIS Department. Source project files can be found by searching 'Lawn Care Maintenance RFP Map' in the OCGIS databases.







**Location**

Oconee County Government Annex

**Address/Description**

1291 Greensboro Highway, Watkinsville, GA

**Maintenance Intervals**

March 1st - October 31st: No less than twice a month or as required if weather conditions are conducive to the rate of growth.

November 1st - February 28th: Maintenance can be reduced to once a month, but shall include leaf/debris removal from grounds and parking areas.

The information used in these applications were derived from digital databases in the Oconee County GIS. Although we strive to provide the best data we can, we sometimes use data developed by sources outside Oconee County. Therefore, Oconee County cannot accept any responsibility for any errors, omissions, or positional accuracy, and therefore, there are no warranties which accompany this product. Although information from Land Surveys may have been used in the creation of this product, in no way does this product represent or constitute a Land Survey. Users of the information displayed in this map are strongly cautioned to verify all information before making any decisions.

This map was created on Friday, September 11, 2020 by the Oconee County GIS Department. Source project files can be found by searching 'Lawn Care Maintenance RFP Map' in the OCGIS databases.







**Location**

Oconee County Health Department

**Address/Description**

1060 Experiment Station Road,  
Watkinsville, GA

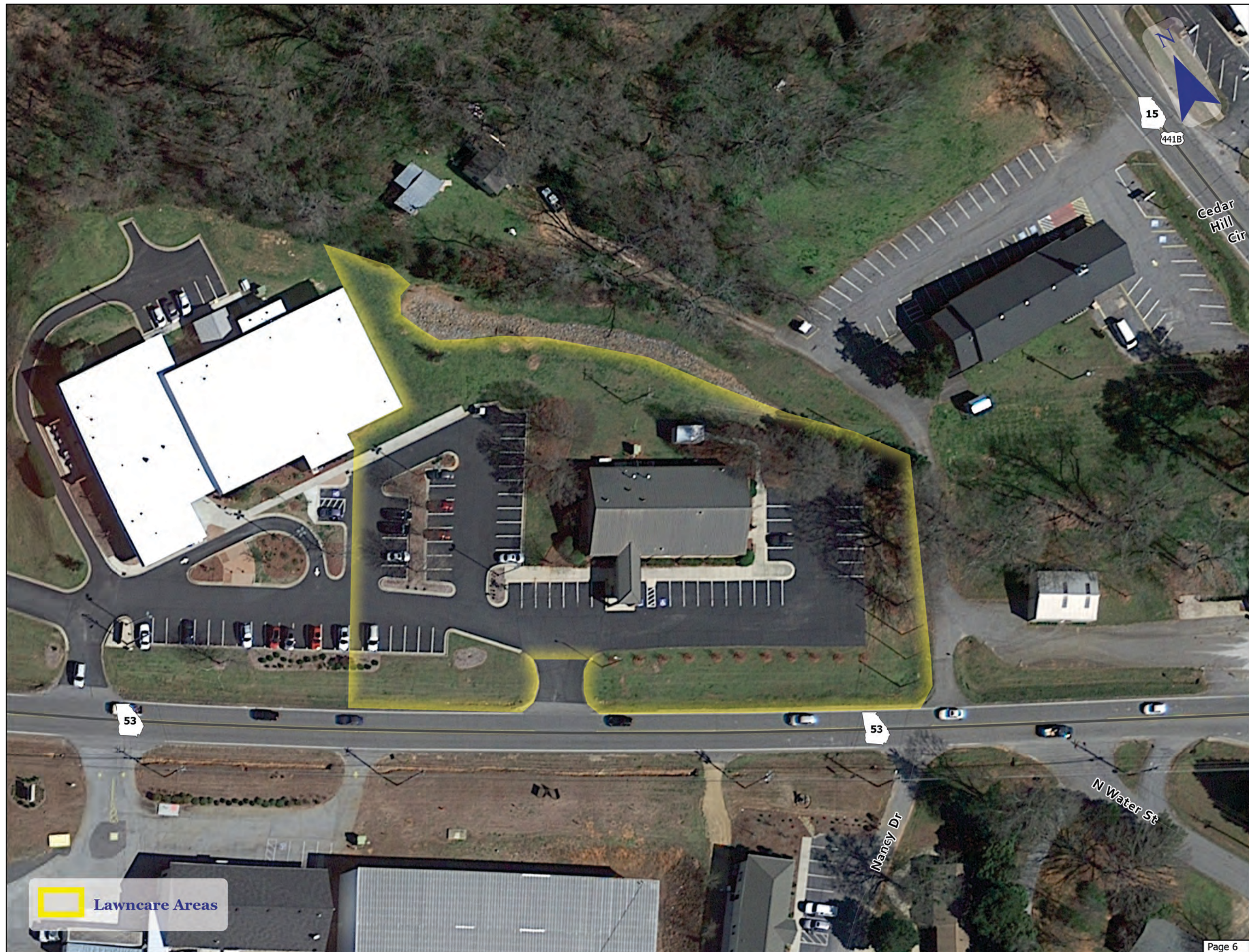
**Maintenance Intervals**

March 1st - October 31st: No less than twice a month or as required if weather conditions are conducive to the rate of growth.

November 1st - February 28th: Maintenance can be reduced to once a month, but shall include leaf/debris removal from grounds and parking areas.

The information used in these applications were derived from digital databases in the Oconee County GIS. Although we strive to provide the best data we can, we sometimes use data developed by sources outside Oconee County. Therefore, Oconee County cannot accept any responsibility for any errors, omissions, or positional accuracy, and therefore, there are no warranties which accompany this product. Although information from Land Surveys may have been used in the creation of this product, in no way does this product represent or constitute a Land Survey. Users of the information displayed in this map are strongly cautioned to verify all information before making any decisions.

This map was created on Friday, September 11, 2020 by the Oconee County GIS Department. Source project files can be found by searching 'Lawn Care Maintenance RFP Map' in the OCGIS databases.







**Location**

Oconee County Library

**Address/Description**

1080 Experiment Station Road,  
Watkinsville, GA

**Maintenance Intervals**

March 1st - October 31st: No less than twice a month or as required if weather conditions are conducive to the rate of growth.

November 1st - February 28th: Maintenance can be reduced to once a month, but shall include leaf/debris removal from grounds and parking areas.

The information used in these applications were derived from digital databases in the Oconee County GIS. Although we strive to provide the best data we can, we sometimes use data developed by sources outside Oconee County. Therefore, Oconee County cannot accept any responsibility for any errors, omissions, or positional accuracy, and therefore, there are no warranties which accompany this product. Although information from Land Surveys may have been used in the creation of this product, in no way does this product represent or constitute a Land Survey. Users of the information displayed in this map are strongly cautioned to verify all information before making any decisions.

This map was created on Friday, September 11, 2020 by the Oconee County GIS Department. Source project files can be found by searching 'Lawn Care Maintenance RFP Map' in the OCGIS databases.







**Location**

Oconee County Jail Campus

**Address/Description**

1140 Experiment Station Road

**Maintenance Intervals**

March 1st - October 31st: No less than twice a month or as required if weather conditions are conducive to the rate of growth.

November 1st - February 28th: Maintenance can be reduced to once a month, but shall include leaf/debris removal from grounds and parking areas.

The information used in these applications were derived from digital databases in the Oconee County GIS. Although we strive to provide the best data we can, we sometimes use data developed by sources outside Oconee County. Therefore, Oconee County cannot accept any responsibility for any errors, omissions, or positional accuracy, and therefore, there are no warranties which accompany this product. Although information from Land Surveys may have been used in the creation of this product, in no way does this product represent or constitute a Land Survey. Users of the information displayed in this map are strongly cautioned to verify all information before making any decisions.

This map was created on Friday, September 11, 2020 by the Oconee County GIS Department. Source project files can be found by searching 'Lawn Care Maintenance RFP Map' in the OCGIS databases.







**Location**

Oconee County Civic Center

**Address/Description**

2661 Hog Mountain Rd, Watkinsville, GA

**Maintenance Intervals**

March 1st - October 31st: No less than twice a month or as required if weather conditions are conducive to the rate of growth.

November 1st - February 28th: Maintenance can be reduced to once a month, but shall include leaf/debris removal from grounds and parking areas.

The information used in these applications were derived from digital databases in the Oconee County GIS. Although we strive to provide the best data we can, we sometimes use data developed by sources outside Oconee County. Therefore, Oconee County cannot accept any responsibility for any errors, omissions, or positional accuracy, and therefore, there are no warranties which accompany this product. Although information from Land Surveys may have been used in the creation of this product, in no way does this product represent or constitute a Land Survey. Users of the information displayed in this map are strongly cautioned to verify all information before making any decisions.

This map was created on Friday, September 11, 2020 by the Oconee County GIS Department. Source project files can be found by searching 'Lawn Care Maintenance RFP Map' in the OCGIS databases.







**Location**

William Daniell House

**Address/Description**

1070 Founders Grove, Watkinsville, GA

**Maintenance Intervals**

March 1st - October 31st: No less than twice a month or as required if weather conditions are conducive to the rate of growth.

November 1st - February 28th: Maintenance can be reduced to once a month, but shall include leaf/debris removal from grounds and parking areas.

The information used in these applications were derived from digital databases in the Oconee County GIS. Although we strive to provide the best data we can, we sometimes use data developed by sources outside Oconee County. Therefore, Oconee County cannot accept any responsibility for any errors, omissions, or positional accuracy, and therefore, there are no warranties which accompany this product. Although information from Land Surveys may have been used in the creation of this product, in no way does this product represent or constitute a Land Survey. Users of the information displayed in this map are strongly cautioned to verify all information before making any decisions.

This map was created on Friday, September 11, 2020 by the Oconee County GIS Department. Source project files can be found by searching 'Lawn Care Maintenance RFP Map' in the OCGIS databases.







**Location**

Oconee County Animal Services

**Address/Description**

1171 Branch Road, Bishop, GA

**Maintenance Intervals**

March 1st - October 31st: No less than twice a month or as required if weather conditions are conducive to the rate of growth.

November 1st - February 28th: Maintenance can be reduced to once a month, but shall include leaf/debris removal from grounds and parking areas.

The information used in these applications were derived from digital databases in the Oconee County GIS. Although we strive to provide the best data we can, we sometimes use data developed by sources outside Oconee County. Therefore, Oconee County cannot accept any responsibility for any errors, omissions, or positional accuracy, and therefore, there are no warranties which accompany this product. Although information from Land Surveys may have been used in the creation of this product, in no way does this product represent or constitute a Land Survey. Users of the information displayed in this map are strongly cautioned to verify all information before making any decisions.

This map was created on Friday, September 11, 2020 by the Oconee County GIS Department. Source project files can be found by searching 'Lawn Care Maintenance RFP Map' in the OCGIS databases.







**Location**

Fire Station 1

**Address/Description**

7580 Macon Highway, Watkinsville, GA

**Maintenance Intervals**


March 1st - October 31st: Maintenance shall occur no less than twice a month.

November 1st - February 28th: Maintenance can be reduced to once a month.

The information used in these applications were derived from digital databases in the Oconee County GIS. Although we strive to provide the best data we can, we sometimes use data developed by sources outside Oconee County. Therefore, Oconee County cannot accept any responsibility for any errors, omissions, or positional accuracy, and therefore, there are no warranties which accompany this product. Although information from Land Surveys may have been used in the creation of this product, in no way does this product represent or constitute a Land Survey. Users of the information displayed in this map are strongly cautioned to verify all information before making any decisions.

This map was created on Friday, September 11, 2020 by the Oconee County GIS Department. Source project files can be found by searching 'Lawn Care Maintenance RFP Map' in the OCGIS databases.



 **Lawn Care Areas**





**Location**

Fire Station 2

**Address/Description**

2590 Old Farmington Road, Watkinsville, GA

**Maintenance Intervals**

March 1st - October 31st: Maintenance shall occur no less than twice a month.

November 1st - February 28th: Maintenance can be reduced to once a month.

The information used in these applications were derived from digital databases in the Oconee County GIS. Although we strive to provide the best data we can, we sometimes use data developed by sources outside Oconee County. Therefore, Oconee County cannot accept any responsibility for any errors, omissions, or positional accuracy, and therefore, there are no warranties which accompany this product. Although information from Land Surveys may have been used in the creation of this product, in no way does this product represent or constitute a Land Survey. Users of the information displayed in this map are strongly cautioned to verify all information before making any decisions.

This map was created on Friday, September 11, 2020 by the Oconee County GIS Department. Source project files can be found by searching 'Lawn Care Maintenance RFP Map' in the OCGIS databases.







**Location**

Fire Station 4

**Address/Description**

7620 Hog Mountain Road, Statham, GA

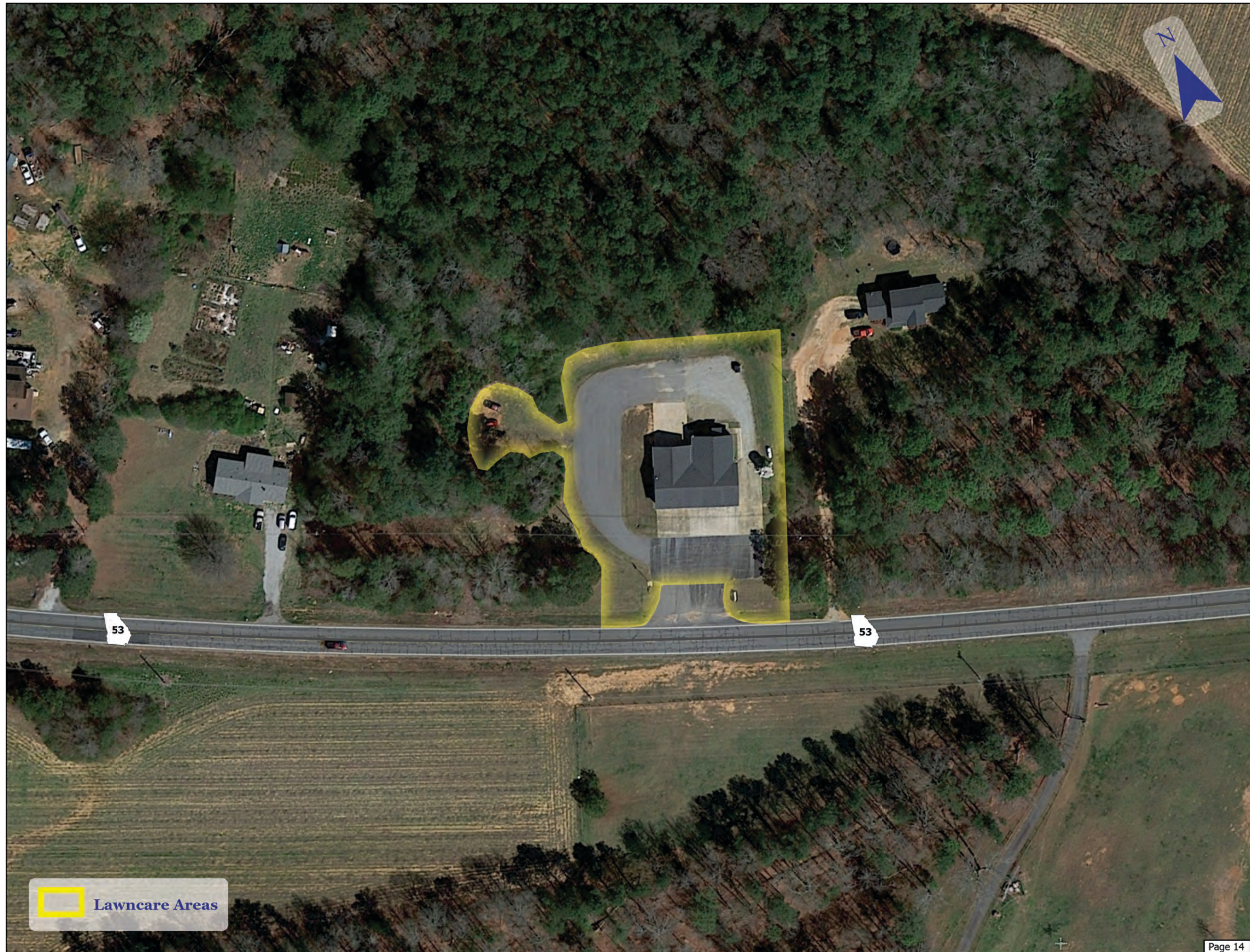
**Maintenance Intervals**

March 1st - October 31st: Maintenance shall occur no less than twice a month.

November 1st - February 28th: Maintenance can be reduced to once a month.

The information used in these applications were derived from digital databases in the Oconee County GIS. Although we strive to provide the best data we can, we sometimes use data developed by sources outside Oconee County. Therefore, Oconee County cannot accept any responsibility for any errors, omissions, or positional accuracy, and therefore, there are no warranties which accompany this product. Although information from Land Surveys may have been used in the creation of this product, in no way does this product represent or constitute a Land Survey. Users of the information displayed in this map are strongly cautioned to verify all information before making any decisions.

This map was created on Friday, September 11, 2020 by the Oconee County GIS Department. Source project files can be found by searching 'Lawn Care Maintenance RFP Map' in the OCGIS databases.







**Location**

Fire Station 5

**Address/Description**

4931 Greensboro Highway, Watkinsville,  
GA

**Maintenance Intervals**

March 1st - October 31st: Maintenance shall occur no less than twice a month.

November 1st - February 28th: Maintenance can be reduced to once a month.

The information used in these applications were derived from digital databases in the Oconee County GIS. Although we strive to provide the best data we can, we sometimes use data developed by sources outside Oconee County. Therefore, Oconee County cannot accept any responsibility for any errors, omissions, or positional accuracy, and therefore, there are no warranties which accompany this product. Although information from Land Surveys may have been used in the creation of this product, in no way does this product represent or constitute a Land Survey. Users of the information displayed in this map are strongly cautioned to verify all information before making any decisions.

This map was created on Friday, September 11, 2020 by the Oconee County GIS Department. Source project files can be found by searching 'Lawn Care Maintenance RFP Map' in the OCGIS databases.







**Location**

Fire Station 6

**Address/Description**

200 Hillsboro Road, High Shoals, GA

**Maintenance Intervals**

March 1st - October 31st: Maintenance shall occur no less than twice a month.

November 1st - February 28th: Maintenance can be reduced to once a month.

The information used in these applications were derived from digital databases in the Oconee County GIS. Although we strive to provide the best data we can, we sometimes use data developed by sources outside Oconee County. Therefore, Oconee County cannot accept any responsibility for any errors, omissions, or positional accuracy, and therefore, there are no warranties which accompany this product. Although information from Land Surveys may have been used in the creation of this product, in no way does this product represent or constitute a Land Survey. Users of the information displayed in this map are strongly cautioned to verify all information before making any decisions.

This map was created on Friday, September 11, 2020 by the Oconee County GIS Department. Source project files can be found by searching 'Lawn Care Maintenance RFP Map' in the OCGIS databases.







**Location**

Fire Station 7

**Address/Description**

1931 McNutt Creek Road, Bogart, GA

**Maintenance Intervals**

March 1st - October 31st: Maintenance shall occur no less than twice a month.

November 1st - February 28th: Maintenance can be reduced to once a month.

The information used in these applications were derived from digital databases in the Oconee County GIS. Although we strive to provide the best data we can, we sometimes use data developed by sources outside Oconee County. Therefore, Oconee County cannot accept any responsibility for any errors, omissions, or positional accuracy, and therefore, there are no warranties which accompany this product. Although information from Land Surveys may have been used in the creation of this product, in no way does this product represent or constitute a Land Survey. Users of the information displayed in this map are strongly cautioned to verify all information before making any decisions.

This map was created on Friday, September 11, 2020 by the Oconee County GIS Department. Source project files can be found by searching 'Lawn Care Maintenance RFP Map' in the OCGIS databases.







**Location**

Fire Station 8

**Address/Description**

1600 Virgil Langford Rd, Watkinsville, GA Note: Aerial imagery is from prior to construction of Station 8

**Maintenance Intervals**

March 1st - October 31st: Maintenance shall occur no less than twice a month.

November 1st - February 28th: Maintenance can be reduced to once a month.

The information used in these applications were derived from digital databases in the Oconee County GIS. Although we strive to provide the best data we can, we sometimes use data developed by sources outside Oconee County. Therefore, Oconee County cannot accept any responsibility for any errors, omissions, or positional accuracy, and therefore, there are no warranties which accompany this product. Although information from Land Surveys may have been used in the creation of this product, in no way does this product represent or constitute a Land Survey. Users of the information displayed in this map are strongly cautioned to verify all information before making any decisions.

This map was created on Friday, September 11, 2020 by the Oconee County GIS Department. Source project files can be found by searching 'Lawn Care Maintenance RFP Map' in the OCGIS databases.







**Location**

Oconee County Fleet Maintenance

**Address/Description**

2121 Rays Church Road, Bishop GA

**Maintenance Intervals**

April 1st - October 31st: Mowing shall occur every other week.

November 1st - March 31st: Mowing shall occur once a month.

The information used in these applications were derived from digital databases in the Oconee County GIS. Although we strive to provide the best data we can, we sometimes use data developed by sources outside Oconee County. Therefore, Oconee County cannot accept any responsibility for any errors, omissions, or positional accuracy, and therefore, there are no warranties which accompany this product. Although information from Land Surveys may have been used in the creation of this product, in no way does this product represent or constitute a Land Survey. Users of the information displayed in this map are strongly cautioned to verify all information before making any decisions.

This map was created on Friday, September 11, 2020 by the Oconee County GIS Department. Source project files can be found by searching 'Lawn Care Maintenance RFP Map' in the OCGIS databases.







**Location**

Highway 15 Collection Site

**Address/Description**

Intersection of Greene Ferry Rd & Old Greensboro Highway

**Maintenance Intervals**

April 1st - October 31st: Mowing shall occur every other week.

November 1st - March 31st: Mowing shall occur once a month.

The information used in these applications were derived from digital databases in the Oconee County GIS. Although we strive to provide the best data we can, we sometimes use data developed by sources outside Oconee County. Therefore, Oconee County cannot accept any responsibility for any errors, omissions, or positional accuracy, and therefore, there are no warranties which accompany this product. Although information from Land Surveys may have been used in the creation of this product, in no way does this product represent or constitute a Land Survey. Users of the information displayed in this map are strongly cautioned to verify all information before making any decisions.

This map was created on Friday, September 11, 2020 by the Oconee County GIS Department. Source project files can be found by searching 'Lawn Care Maintenance RFP Map' in the OCGIS databases.







---

**Location**

Mars Hill Collection Site

**Address/Description**

Jimmy Daniell Road between Vend Drive  
& Hwy 316

---

**Maintenance Intervals**

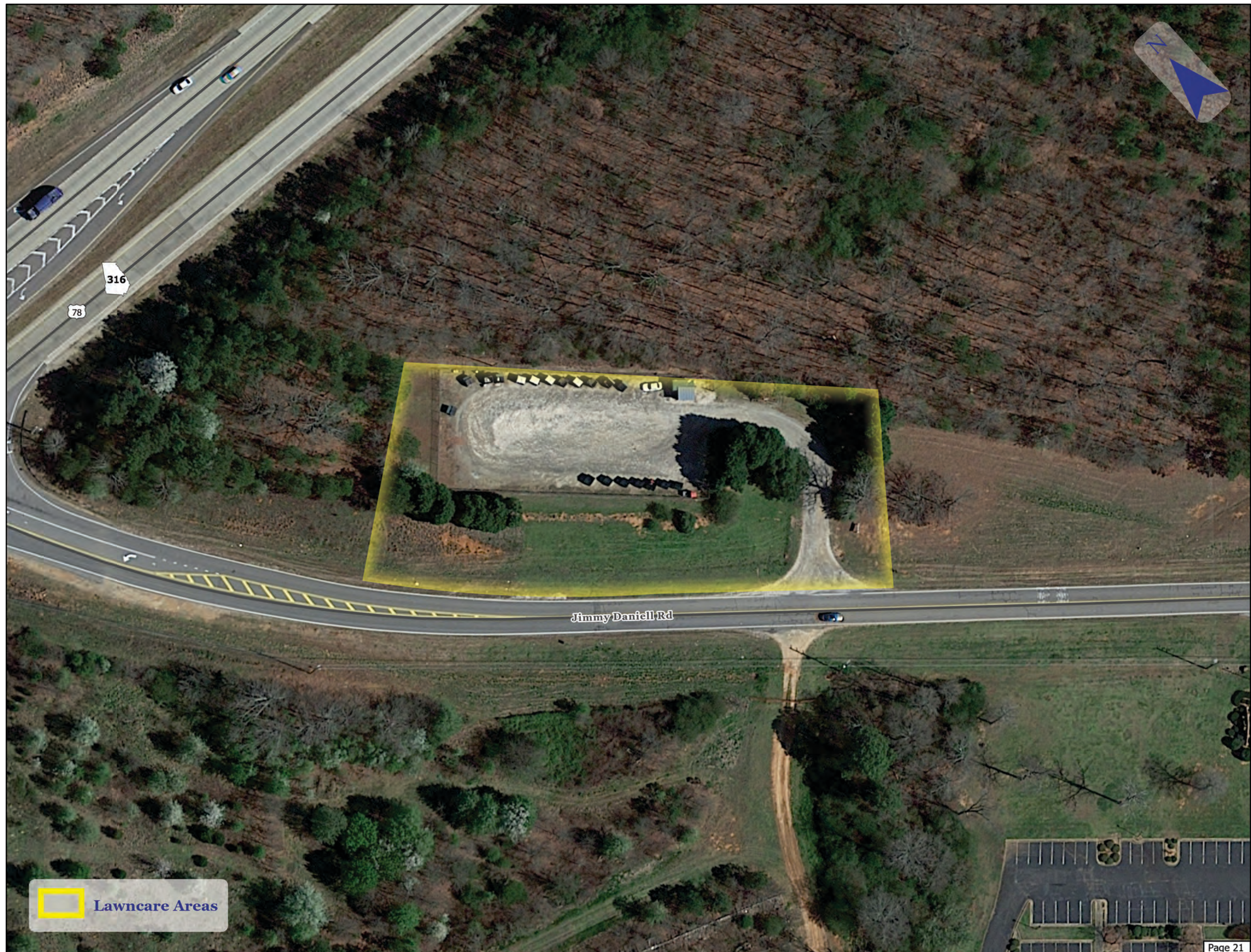
April 1st - October 31st: Mowing shall  
occur every other week.

November 1st - March 31st: Mowing  
shall occur once a month.

---

The information used in these applications were derived from digital databases in the Oconee County GIS. Although we strive to provide the best data we can, we sometimes use data developed by sources outside Oconee County. Therefore, Oconee County cannot accept any responsibility for any errors, omissions, or positional accuracy, and therefore, there are no warranties which accompany this product. Although information from Land Surveys may have been used in the creation of this product, in no way does this product represent or constitute a Land Survey. Users of the information displayed in this map are strongly cautioned to verify all information before making any decisions.

This map was created on Friday, September 11, 2020 by the Oconee County GIS Department. Source project files can be found by searching 'Lawn Care Maintenance RFP Map' in the OCGIS databases.







**Location**

Rankin Road Collection Site

**Address/Description**

1030 Rankin Rd, Watkinsville, GA

**Maintenance Intervals**


April 1st - October 31st: Mowing shall occur every other week.

November 1st - March 31st: Mowing shall occur once a month.

The information used in these applications were derived from digital databases in the Oconee County GIS. Although we strive to provide the best data we can, we sometimes use data developed by sources outside Oconee County. Therefore, Oconee County cannot accept any responsibility for any errors, omissions, or positional accuracy, and therefore, there are no warranties which accompany this product. Although information from Land Surveys may have been used in the creation of this product, in no way does this product represent or constitute a Land Survey. Users of the information displayed in this map are strongly cautioned to verify all information before making any decisions.

This map was created on Friday, September 11, 2020 by the Oconee County GIS Department. Source project files can be found by searching 'Lawn Care Maintenance RFP Map' in the OCGIS databases.



 **Lawncare Areas**

Rankin Rd

Timber Mill Dr





**Location**

Oconee County Landfill

**Address/Description**

2721 Macon Hwy, Watkinsville, GA

**Maintenance Intervals**

April 1st - October 31st: Mowing shall occur every other week.

November 1st - March 31st: Mowing shall occur once a month.

The information used in these applications were derived from digital databases in the Oconee County GIS. Although we strive to provide the best data we can, we sometimes use data developed by sources outside Oconee County. Therefore, Oconee County cannot accept any responsibility for any errors, omissions, or positional accuracy, and therefore, there are no warranties which accompany this product. Although information from Land Surveys may have been used in the creation of this product, in no way does this product represent or constitute a Land Survey. Users of the information displayed in this map are strongly cautioned to verify all information before making any decisions.

This map was created on Friday, September 11, 2020 by the Oconee County GIS Department. Source project files can be found by searching 'Lawn Care Maintenance RFP Map' in the OCGIS databases.







**Location**

Highway 53 Collection Site

**Address/Description**

Intersection of Hog Mountain Road & Carrithers School Rd

**Maintenance Intervals**

April 1st - October 31st: Mowing shall occur every other week.

November 1st - March 31st: Mowing shall occur once a month.

The information used in these applications were derived from digital databases in the Oconee County GIS. Although we strive to provide the best data we can, we sometimes use data developed by sources outside Oconee County. Therefore, Oconee County cannot accept any responsibility for any errors, omissions, or positional accuracy, and therefore, there are no warranties which accompany this product. Although information from Land Surveys may have been used in the creation of this product, in no way does this product represent or constitute a Land Survey. Users of the information displayed in this map are strongly cautioned to verify all information before making any decisions.

This map was created on Friday, September 11, 2020 by the Oconee County GIS Department. Source project files can be found by searching 'Lawn Care Maintenance RFP Map' in the OCGIS databases.







**Location**

Mars Hill Rd Right of Way

**Address/Description**

Butler's Crossing to Oconee Connector  
Note: All roads and subdivisions entering Mars Hill should be maintained back to where the high back curb ends.

**Maintenance Intervals**

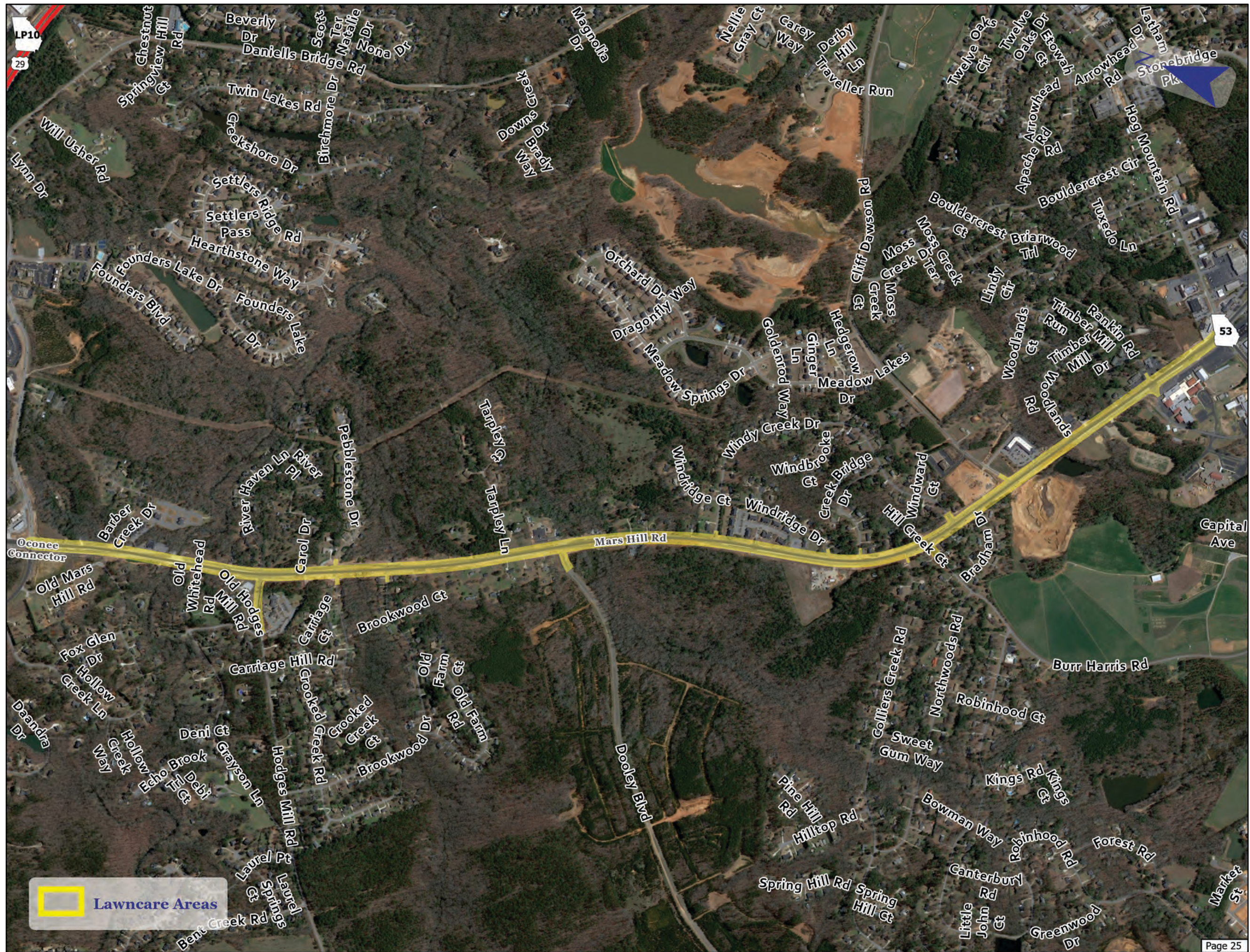
April 1st - October 31st: Maintenance shall occur no less than twice a month.

November and March: Maintenance shall occur once a month.

December 1st - February 28th: Litter and Debris removal shall be performed in all areas.

The information used in these applications were derived from digital databases in the Oconee County GIS. Although we strive to provide the best data we can, we sometimes use data developed by sources outside Oconee County. Therefore, Oconee County cannot accept any responsibility for any errors, omissions, or positional accuracy, and therefore, there are no warranties which accompany this product. Although information from Land Surveys may have been used in the creation of this product, in no way does this product represent or constitute a Land Survey. Users of the information displayed in this map are strongly cautioned to verify all information before making any decisions.

This map was created on Friday, September 11, 2020 by the Oconee County GIS Department. Source project files can be found by searching 'Lawn Care Maintenance RFP Map' in the OCGIS databases.







**Location**

Epps Parkway Right of Way

**Address/Description**

Athens-Clarke County Line to Hwy 316

**Maintenance Intervals**

April 1st - October 31st: Maintenance shall occur no less than twice a month.

November and March: Maintenance shall occur once a month.

December 1st - February 28th: Litter and Debris removal shall be performed in all areas.

The information used in these applications were derived from digital databases in the Oconee County GIS. Although we strive to provide the best data we can, we sometimes use data developed by sources outside Oconee County. Therefore, Oconee County cannot accept any responsibility for any errors, omissions, or positional accuracy, and therefore, there are no warranties which accompany this product. Although information from Land Surveys may have been used in the creation of this product, in no way does this product represent or constitute a Land Survey. Users of the information displayed in this map are strongly cautioned to verify all information before making any decisions.

This map was created on Friday, September 11, 2020 by the Oconee County GIS Department. Source project files can be found by searching 'Lawn Care Maintenance RFP Map' in the OCGIS databases.



 Lawncare Areas





**Location**

Oconee Connector Right of Way

**Address/Description**

Oconee Connector from Mars Hill Road to road in front of Home Depot

**Maintenance Intervals**

April 1st - October 31st: Maintenance shall occur no less than twice a month.

November and March: Maintenance shall occur once a month.

December 1st - February 28th: Litter and Debris removal shall be performed in all areas.

The information used in these applications were derived from digital databases in the Oconee County GIS. Although we strive to provide the best data we can, we sometimes use data developed by sources outside Oconee County. Therefore, Oconee County cannot accept any responsibility for any errors, omissions, or positional accuracy, and therefore, there are no warranties which accompany this product. Although information from Land Surveys may have been used in the creation of this product, in no way does this product represent or constitute a Land Survey. Users of the information displayed in this map are strongly cautioned to verify all information before making any decisions.

This map was created on Friday, September 11, 2020 by the Oconee County GIS Department. Source project files can be found by searching 'Lawn Care Maintenance RFP Map' in the OCGIS databases.







**Location**

Plaza Pkwy Right of Way

**Address/Description**

Plaza Parkway from Oconee Connector to Jennings Mill

**Maintenance Intervals**

April 1st - October 31st: Maintenance shall occur no less than twice a month.

November and March: Maintenance shall occur once a month.

December 1st - February 28th: Litter and Debris removal shall be performed in all areas.

The information used in these applications were derived from digital databases in the Oconee County GIS. Although we strive to provide the best data we can, we sometimes use data developed by sources outside Oconee County. Therefore, Oconee County cannot accept any responsibility for any errors, omissions, or positional accuracy, and therefore, there are no warranties which accompany this product. Although information from Land Surveys may have been used in the creation of this product, in no way does this product represent or constitute a Land Survey. Users of the information displayed in this map are strongly cautioned to verify all information before making any decisions.

This map was created on Friday, September 11, 2020 by the Oconee County GIS Department. Source project files can be found by searching 'Lawn Care Maintenance RFP Map' in the OCGIS databases.







**Location**

Virgil Langford Road Sidewalks

**Address/Description**

All areas along Virgil Langford Road with sidewalks

**Maintenance Intervals**

April 1st - October 31st: Maintenance shall occur no less than twice a month.

November and March: Maintenance shall occur once a month.

December 1st - February 28th: Litter and Debris removal shall be performed in all areas.

The information used in these applications were derived from digital databases in the Oconee County GIS. Although we strive to provide the best data we can, we sometimes use data developed by sources outside Oconee County. Therefore, Oconee County cannot accept any responsibility for any errors, omissions, or positional accuracy, and therefore, there are no warranties which accompany this product. Although information from Land Surveys may have been used in the creation of this product, in no way does this product represent or constitute a Land Survey. Users of the information displayed in this map are strongly cautioned to verify all information before making any decisions.

This map was created on Friday, September 11, 2020 by the Oconee County GIS Department. Source project files can be found by searching 'Lawn Care Maintenance RFP Map' in the OCGIS databases.







**Location**

Jennings Mill Road Right of Way

**Address/Description**

From Athens-Clarke County to Intersection with Virgil Langford Rd

**Maintenance Intervals**

April 1st - October 31st: Maintenance shall occur no less than twice a month.

November and March: Maintenance shall occur once a month.

December 1st - February 28th: Litter and Debris removal shall be performed in all areas.

The information used in these applications were derived from digital databases in the Oconee County GIS. Although we strive to provide the best data we can, we sometimes use data developed by sources outside Oconee County. Therefore, Oconee County cannot accept any responsibility for any errors, omissions, or positional accuracy, and therefore, there are no warranties which accompany this product. Although information from Land Surveys may have been used in the creation of this product, in no way does this product represent or constitute a Land Survey. Users of the information displayed in this map are strongly cautioned to verify all information before making any decisions.

This map was created on Friday, September 11, 2020 by the Oconee County GIS Department. Source project files can be found by searching 'Lawn Care Maintenance RFP Map' in the OCGIS databases.







**Location**

Highway 53 Right of Way

**Address/Description**

From Publix to the Civic Center and including the Jamestown Blvd entry median

**Maintenance Intervals**

April 1st - October 31st: Maintenance shall occur no less than twice a month.

November and March: Maintenance shall occur once a month.

December 1st - February 28th: Litter and Debris removal shall be performed in all areas.

The information used in these applications were derived from digital databases in the Oconee County GIS. Although we strive to provide the best data we can, we sometimes use data developed by sources outside Oconee County. Therefore, Oconee County cannot accept any responsibility for any errors, omissions, or positional accuracy, and therefore, there are no warranties which accompany this product. Although information from Land Surveys may have been used in the creation of this product, in no way does this product represent or constitute a Land Survey. Users of the information displayed in this map are strongly cautioned to verify all information before making any decisions.

This map was created on Friday, September 11, 2020 by the Oconee County GIS Department. Source project files can be found by searching 'Lawn Care Maintenance RFP Map' in the OCGIS databases.







**Location**

Parkway Blvd Right of Way

**Address/Description**

Oconee Connector to Epps Bridge Pkwy

**Maintenance Intervals**

April 1st - October 31st: Maintenance shall occur no less than twice a month.

November and March: Maintenance shall occur once a month.

December 1st - February 28th: Litter and Debris removal shall be performed in all areas.

The information used in these applications were derived from digital databases in the Oconee County GIS. Although we strive to provide the best data we can, we sometimes use data developed by sources outside Oconee County. Therefore, Oconee County cannot accept any responsibility for any errors, omissions, or positional accuracy, and therefore, there are no warranties which accompany this product. Although information from Land Surveys may have been used in the creation of this product, in no way does this product represent or constitute a Land Survey. Users of the information displayed in this map are strongly cautioned to verify all information before making any decisions.

This map was created on Friday, September 11, 2020 by the Oconee County GIS Department. Source project files can be found by searching 'Lawn Care Maintenance RFP Map' in the OCGIS databases.







**Location**

US 441 Right of Way

**Address/Description**

From the intersection with Hog Mountain Road to the Athens-Clarke County line

**Maintenance Intervals**

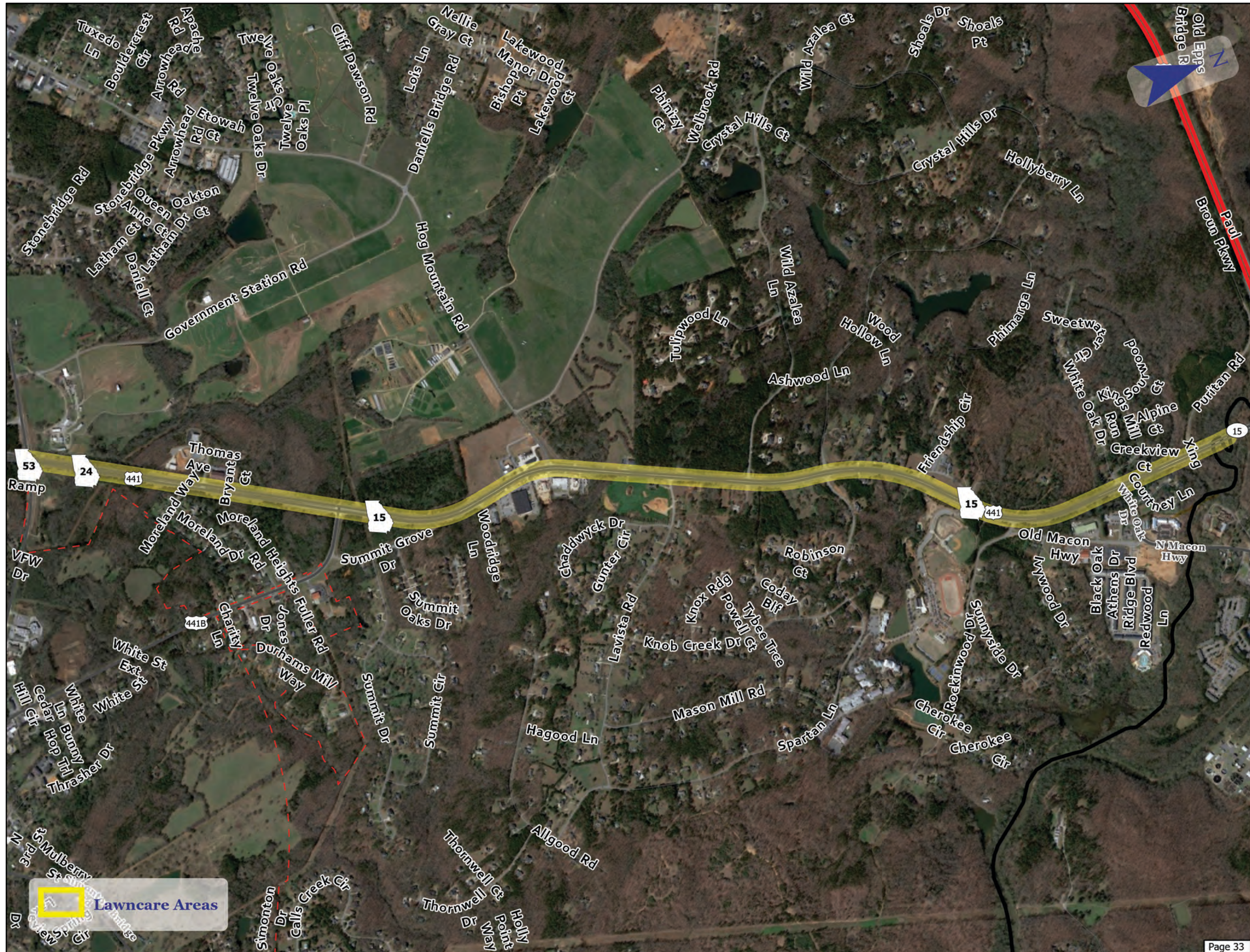
April 1st - October 31st: Maintenance shall occur no less than twice a month.

November and March: Maintenance shall occur once a month.

December 1st - February 28th: Litter and Debris removal shall be performed in all areas.

The information used in these applications were derived from digital databases in the Oconee County GIS. Although we strive to provide the best data we can, we sometimes use data developed by sources outside Oconee County. Therefore, Oconee County cannot accept any responsibility for any errors, omissions, or positional accuracy, and therefore, there are no warranties which accompany this product. Although information from Land Surveys may have been used in the creation of this product, in no way does this product represent or constitute a Land Survey. Users of the information displayed in this map are strongly cautioned to verify all information before making any decisions.

This map was created on Friday, September 11, 2020 by the Oconee County GIS Department. Source project files can be found by searching 'Lawn Care Maintenance RFP Map' in the OCGIS databases.







**Location**

Epps Bridge Pkwy

**Address/Description**

GA 316 & GA 10 Interchange

**Maintenance Intervals**

April 1st - October 31st: Maintenance shall occur no less than twice a month.

November and March: Maintenance shall occur once a month.

December 1st - February 28th: Litter and Debris removal shall be performed in all areas.

The information used in these applications were derived from digital databases in the Oconee County GIS. Although we strive to provide the best data we can, we sometimes use data developed by sources outside Oconee County. Therefore, Oconee County cannot accept any responsibility for any errors, omissions, or positional accuracy, and therefore, there are no warranties which accompany this product. Although information from Land Surveys may have been used in the creation of this product, in no way does this product represent or constitute a Land Survey. Users of the information displayed in this map are strongly cautioned to verify all information before making any decisions.

This map was created on Friday, September 11, 2020 by the Oconee County GIS Department. Source project files can be found by searching 'Lawn Care Maintenance RFP Map' in the OCGIS databases.







**Location**

Malcom Bridge - Mars Hill Roundabout

**Address/Description**

Note: Imagery is outdated. Intersection is now a roundabout.

**Maintenance Intervals**

April 1st - October 31st: Maintenance shall occur no less than twice a month.

November and March: Maintenance shall occur once a month.

December 1st - February 28th: Litter and Debris removal shall be performed in all areas.

The information used in these applications were derived from digital databases in the Oconee County GIS. Although we strive to provide the best data we can, we sometimes use data developed by sources outside Oconee County. Therefore, Oconee County cannot accept any responsibility for any errors, omissions, or positional accuracy, and therefore, there are no warranties which accompany this product. Although information from Land Surveys may have been used in the creation of this product, in no way does this product represent or constitute a Land Survey. Users of the information displayed in this map are strongly cautioned to verify all information before making any decisions.

This map was created on Friday, September 11, 2020 by the Oconee County GIS Department. Source project files can be found by searching 'Lawn Care Maintenance RFP Map' in the OCGIS databases.







**Location**

Malcom Bridge Middle School  
Roundabout

**Address/Description**

Note: Imagery is outdated. Intersection  
is now a roundabout.

**Maintenance Intervals**

April 1st - October 31st: Maintenance  
shall occur no less than twice a month.

November and March: Maintenance shall  
occur once a month.

December 1st - February 28th: Litter  
and Debris removal shall be performed  
in all areas.

The information used in these applications were  
derived from digital databases in the Oconee  
County GIS. Although we strive to provide the best  
data we can, we sometimes use data developed  
by sources outside Oconee County. Therefore,  
Oconee County cannot accept any responsibility  
for any errors, omissions, or positional accuracy,  
and therefore, there are no warranties which  
accompany this product. Although information  
from Land Surveys may have been used in the  
creation of this product, in no way does this  
product represent or constitute a Land Survey.  
Users of the information displayed in this map are  
strongly cautioned to verify all information before  
making any decisions.

This map was created on Friday, September 11,  
2020 by the Oconee County GIS Department.  
Source project files can be found by searching  
'Lawn Care Maintenance RFP Map' in the OCGIS  
databases.



 **Lawncare Areas**  
Arlington Pl





**Location**

Mars Hill Rd

**Address/Description**

Intersection of Rocky Branch Rd, Virgil Langford Rd, and Mars Hill Rd

**Maintenance Intervals**

April 1st - October 31st: Maintenance shall occur no less than twice a month.

November and March: Maintenance shall occur once a month.

December 1st - February 28th: Litter and Debris removal shall be performed in all areas.

The information used in these applications were derived from digital databases in the Oconee County GIS. Although we strive to provide the best data we can, we sometimes use data developed by sources outside Oconee County. Therefore, Oconee County cannot accept any responsibility for any errors, omissions, or positional accuracy, and therefore, there are no warranties which accompany this product. Although information from Land Surveys may have been used in the creation of this product, in no way does this product represent or constitute a Land Survey. Users of the information displayed in this map are strongly cautioned to verify all information before making any decisions.

This map was created on Friday, September 11, 2020 by the Oconee County GIS Department. Source project files can be found by searching 'Lawn Care Maintenance RFP Map' in the OCGIS databases.

