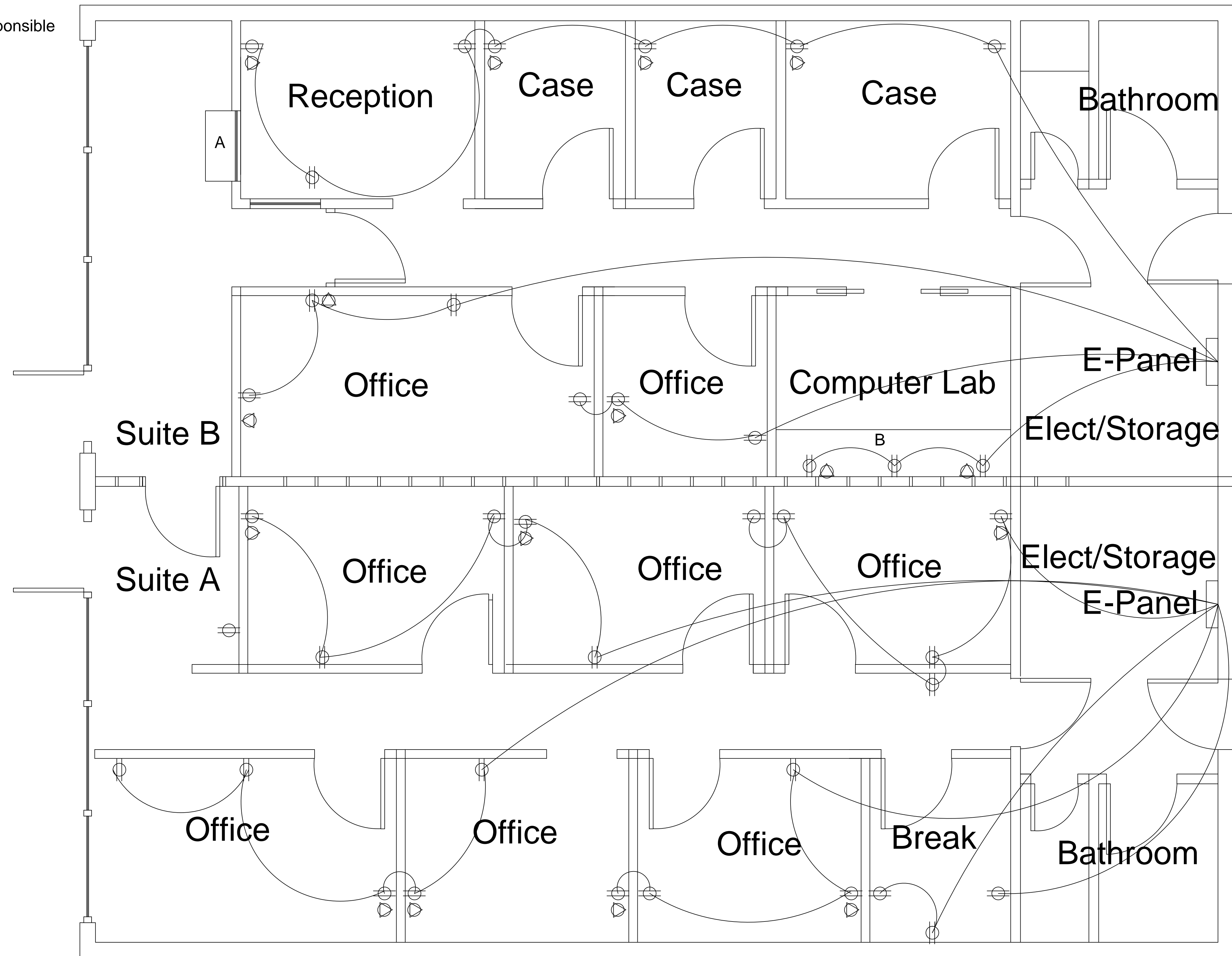


Notes

1. Electrical Panels are on the existing back wall. The panel has enough spare for the circuitry shown on drawings. Existing circuit are already present and will be addressed on site .
2. Electrical layout is for reference and the electrical contractor will be responsible for electrical layout to prevent overload.



Drawn By	DC	REV.	DESCRIPTION	DATE	BY
Checked By	DC		ELECTRICAL-PLAN		
App'd By	APPDBY				
Date	NOV30/2016				

**CITY OF SPARTANBURG
CONSTRUCTION MANAGEMENT**

PIEDMONT COMMUNITY ACTION
OFFICE RENOVATION
601 JOHN B WHITE BLVD.

Project No.	Dwg. No.
Scale :	4
SCALE	6
	of