



HUSSEY GAY BELL
— Established 1958 —

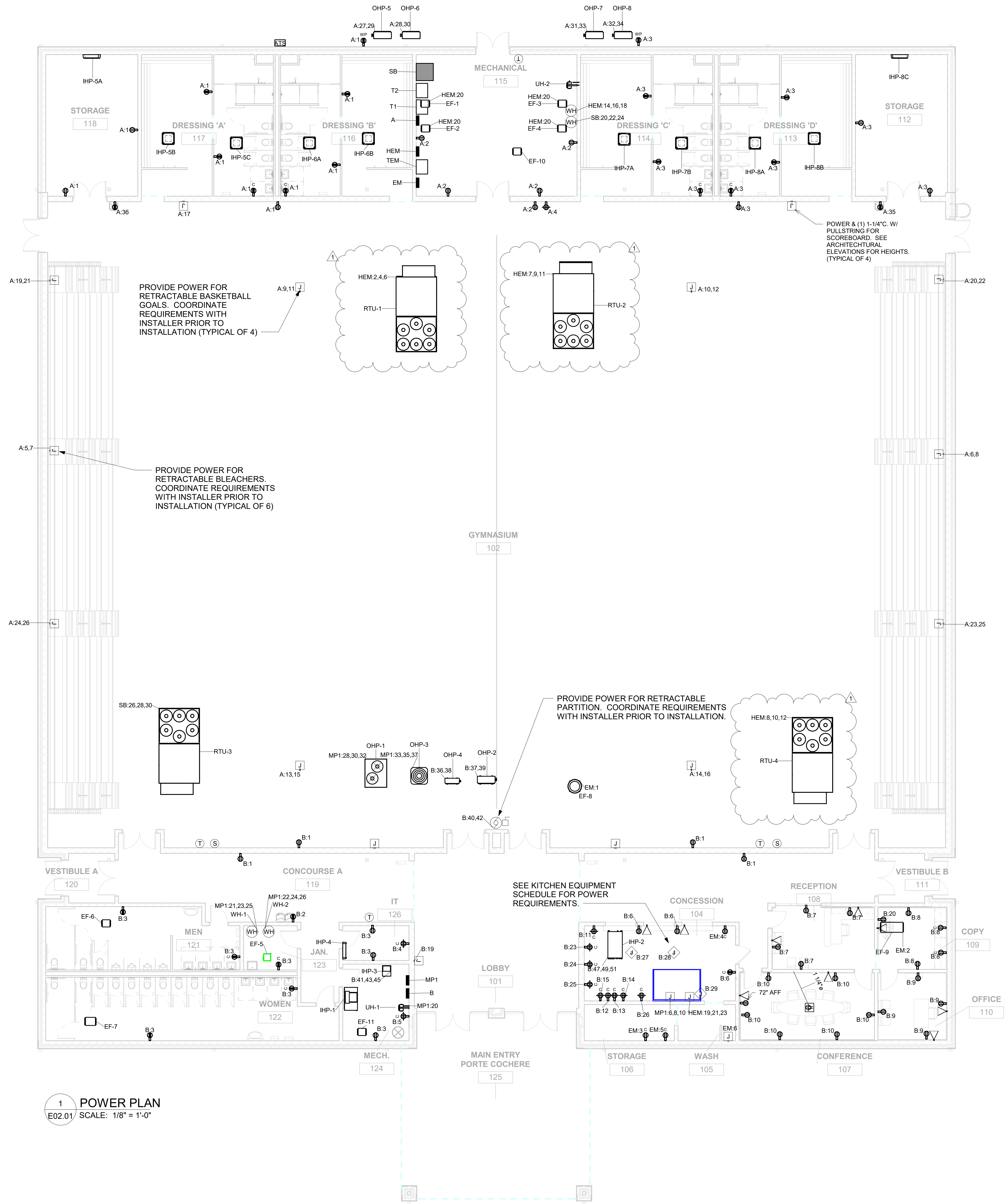
REVISIONS
Revision 1 - 01/17/19

DESIGNED	DRAWN	CHECKED
WRL	WLS	WRL
DATE: 05/23/2019		
JOB NO. 216 4801 01		
05/09/19		

EFFINGHAM COUNTY GYMNASIUM
CLARENCE E. MORGAN RECREATION COMPLEX
1750 GA. 21, SPRINGFIELD, GEORGIA 31329

DRAWING NUMBER

E02.01



MECHANICAL EQUIPMENT SCHEDULE

ITEM #	VOLTS	PHASE	AMPS	MCA	MOCP	DISCONNECT	CONNECTIONS	NOTES
RTU-1	480	3	64	80	90/3	100/3/R	2°C. W/(3) No. 3 AWG & (1) No. 8 AWG (G)	
RTU-2	480	3	64	80	90/3	100/3/R	2°C. W/(3) No. 3 AWG & (1) No. 8 AWG (G)	
RTU-3	480	3	64	80	90/3	100/3/R	2°C. W/(3) No. 3 AWG & (1) No. 8 AWG (G)	
OHP-1	480	3	14.4	18	30/3	30/3/R	34°C. W/(3) #10 AWG & (1) #10 AWG (G)	
IHP-1	480	3	22.8	28.6	30/3	30/3/1	34°C. W/(3) #10 AWG & (1) #10 AWG (G)	
IHP-2	208	3	3.75	5	15/3	30/3/1	12°C. W/(3) #12 AWG & (1) #12 AWG (G)	
IHP-3	208	3	20	32	35/2	60/2/3/R	1°C. W/(3) #8 AWG & (1) #10 AWG (G)	
OHP-5	208	1	20	25	35/2	60/2/3/R	34°C. W/(3) #10 AWG & (1) #10 AWG (G)	UNIT PROVIDES POWER FOR IHP-5A, IHP-5B & IHP-5C. NOTE 1
OHP-6	208	1	14.4	18	25/2	30/2/3/R	12°C. W/(3) #12 AWG & (1) #12 AWG (G)	UNIT PROVIDES POWER FOR IHP-5A, IHP-5B & IHP-5C. NOTE 1
OHP-7	208	1	14.4	18	25/2	30/2/3/R	12°C. W/(3) #12 AWG & (1) #12 AWG (G)	UNIT PROVIDES POWER FOR IHP-5A, IHP-5B & IHP-5C. NOTE 1
OHP-8	208	1	20	25	35/2	60/2/3/R	34°C. W/(3) #10 AWG & (1) #10 AWG (G)	UNIT PROVIDES POWER FOR IHP-5A, IHP-5B & IHP-5C. NOTE 1
OHP-2	208	1	28	35	50/2	60/2/3/R	1°C. W/(3) #8 AWG & (1) #10 AWG (G)	
OHP-3	480	3	4.3	5.4	15/3	30/3/3/R	34°C. W/(3) #10 AWG & (1) #10 AWG (G)	
OHP-4	208	1	7.2	9	15/2	30/2/3/R	12°C. W/(3) #12 AWG & (1) #12 AWG (G)	UNIT PROVIDES POWER FOR IHP-4. NOTE 1
UH-1	277	1	11	14	20/1	SW	12°C. W/(2) #12 AWG & (1) #12 AWG (G)	
UH-2	277	1	14.5	18	20/1	SW	34°C. W/(2) #10 AWG & (1) #10 AWG (G)	
EF-1,2,3,4,6,7	277	1	2	10	20/1	SW	12°C. W/(2) #12 AWG & (1) #12 AWG (G)	FAN TO COME ON WITH LIGHT IN ROOM FAN IS SERVING
EF-5	120	1	16	20	15/1	SW	12°C. W/(2) #12 AWG & (1) #12 AWG (G)	FAN TO COME ON WITH LIGHT IN ROOM FAN IS SERVING
EF-8	120	1	16	20	35/1	CONTROL PANEL	34°C. W/(2) #8 AWG & (1) #10 AWG (G)	SEE HOOD DETAILS
EF-9	120	1	13.8	17.3	30/1		34°C. W/(2) #10 AWG & (1) #10 AWG (G)	SEE HOOD DETAILS
EF-10,11	277	1	7.2	9	15/1	SW		FAN TO BE CONTROLLED BY THERMOSTAT
WH-1	480	3	44	55	70/3	100/3/1	1 1/4" W/(3) #4 AWG & (1) #8 AWG (G)	
WH-2	480	3	44	55	70/3	100/3/1	1 1/4" W/(3) #4 AWG & (1) #8 AWG (G)	
WH-3	480	3	23	29	40/3	60/3/1	1°C. W/(3) #8 AWG & (1) #10 AWG (G)	
WH-4	480	3	23	29	40/3	60/3/1	1°C. W/(3) #8 AWG & (1) #10 AWG (G)	

NOTES:
1. PROVIDE 30A, 3 POLE MOTOR RATED SWITCH AT INDOOR UNIT. DIVISION 26 CONTRACTOR SHALL PROVIDE CONNECTIONS BETWEEN INDOOR AND OUTDOOR UNIT.

KITCHEN EQUIPMENT SCHEDULE

ITEM #	VOLTS	PHASE	DESCRIPTION	AMPS	MCA	MOCP	DISCONNECT	CONNECTIONS	NOTES
13	480	3	GRIDDLE	19.5	24.5	25/3	25/3/1	34°C. W/(4) #10 AWG & (1) #10 AWG (G)	
14	480	3	FRYER	36	45	50/3	60/3/1	1 1/4" W/(4) #6 AWG & (1) #10 AWG (G)	
2	120	1	FREEZER	7.2	9	20/1	5-15P	12°C. W/(2) #12 AWG & (1) #12 AWG (G)	
8	120	1	REFRIGERATOR	5.4	7	20/1	5-15P	12°C. W/(2) #12 AWG & (1) #12 AWG (G)	
9	120	1	REFRIGERATOR	5.4	7	20/1	5-15P	12°C. W/(2) #12 AWG & (1) #12 AWG (G)	
12	120	1	HOOD LIGHTS	20	20	20/1	30/2/1	12°C. W/(2) #12 AWG & (1) #12 AWG (G)	
17	120	1	HOTDOG GRILL	12.8	16	20/1	5-15P	12°C. W/(2) #12 AWG & (1) #12 AWG (G)	
18	120	1	BUN WARMER	4	1	20/1	5-15P	12°C. W/(2) #12 AWG & (1) #12 AWG (G)	
19	120	1	POPCORN MACHINE	10	12.5	20/1	5-15P	12°C. W/(2) #12 AWG & (1) #12 AWG (G)	
20	120	1	ICE MACHINE	12.2	15.5	20/1	5-15P	12°C. W/(2) #12 AWG & (1) #12 AWG (G)	
22	120	1	ICE MACHINE	12.2	15.5	20/1	5-15P	12°C. W/(2) #12 AWG & (1) #12 AWG (G)	
24	120	1	MOBILE WORKTABLE	12.2	15.5	20/1	5-20P	12°C. W/(2) #12 AWG & (1) #12 AWG (G)	PROVIDE CONVENIENCE RECEPTACLE DROP CORD FROM CEILING
25	120	1	MOBILE WORKTABLE	12.2	15.5	20/1	5-20P	12°C. W/(2) #12 AWG & (1) #12 AWG (G)	PROVIDE CONVENIENCE RECEPTACLE DROP CORD FROM CEILING

1 POWER PLAN
E02.01 SCALE: 1/8" = 1'-0"

This drawing is the property of HUSSEY GAY BELL, PROFESSIONAL ENGINEER, and is not to be reproduced or copied in whole or in part. It is to be used only for the project, location and date shown on this drawing. Do not make changes to this drawing without the written consent of HUSSEY GAY BELL. Use dimensions given to control the location of all work. Use dimensions given to control the location of all work.