



## **ADDENDUM No. 1**

# 2017 CDBG (Community Development Block Grant) Sidewalk Install/Repair

Contract Number: T-17-006

## Chattanooga Department of Transportation

**Question/Comment 1:** I bought the plans from the purchasing department, the document is about 439 pages long, and I cannot find plans in it anywhere. All I am seeing is a few drawings on the ADA/bike pedestools/etc..., and I cannot find the location anywhere either of where the actual work is going to take place. I just need a little clarification on these two points.

**Answer:** Please view the attached documents. The plans for the CDBG Sidewalk project are attached with notation of its location.

[illegible]

## INDEX OF SHEETS

TITLE SHEET	0	
GENERAL NOTES	1	
TYPICAL SECTIONS	2	2.2
DETAILS	3	
DEMO PLAN	4	7
SITE & GRADING PLAN	8	11

CITY COUNCIL

DEPARTMENT OF TRANSPORTATION

**CITY OF  
CHATTANOOGA**  
DEPARTMENT  
OF  
TRANSPORTATION

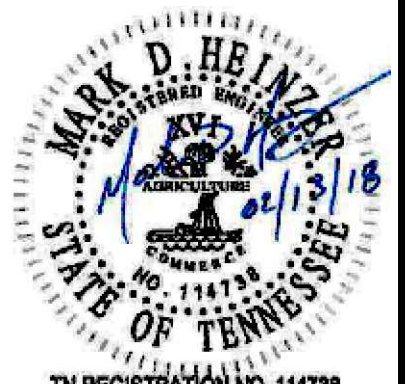
---

BLYTHE BAILEY

MARK D. HEINZER

DODDS AVENUE - CDBG SIDEWALK

COVER

[illegible]

SHEET NO. 0

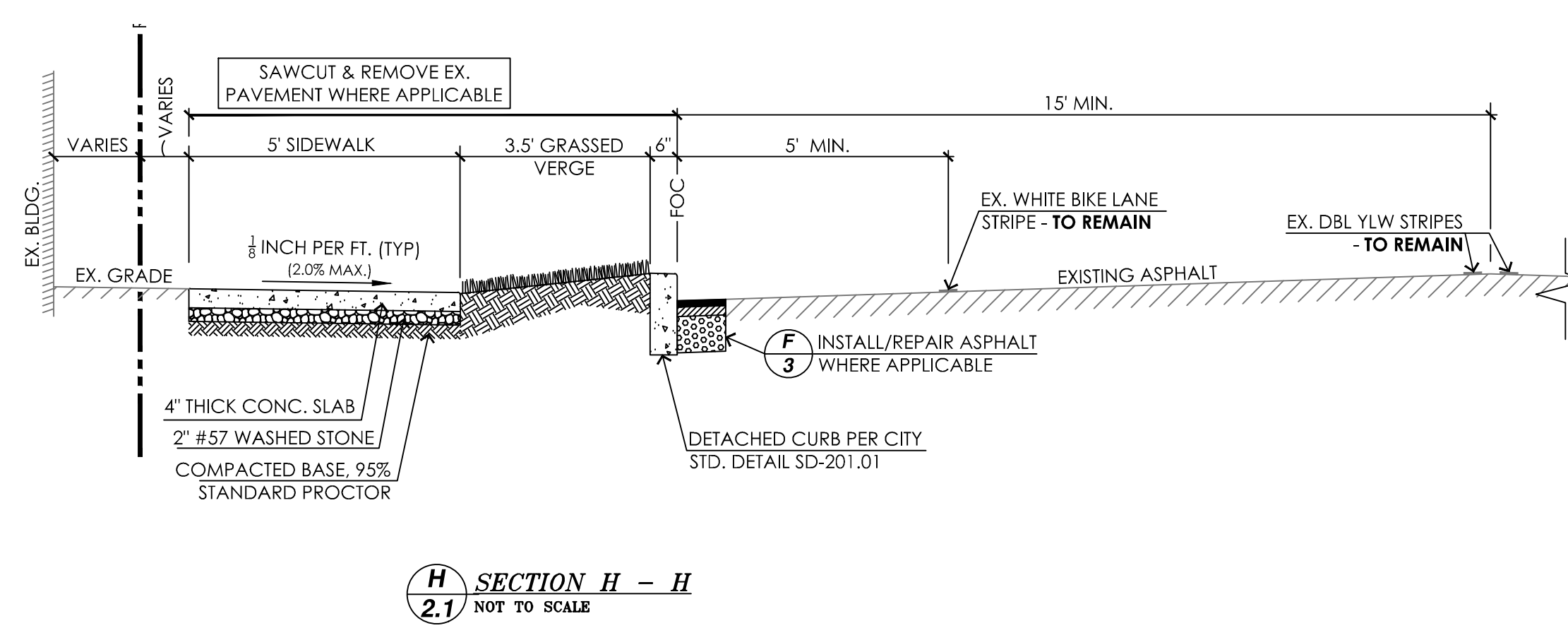
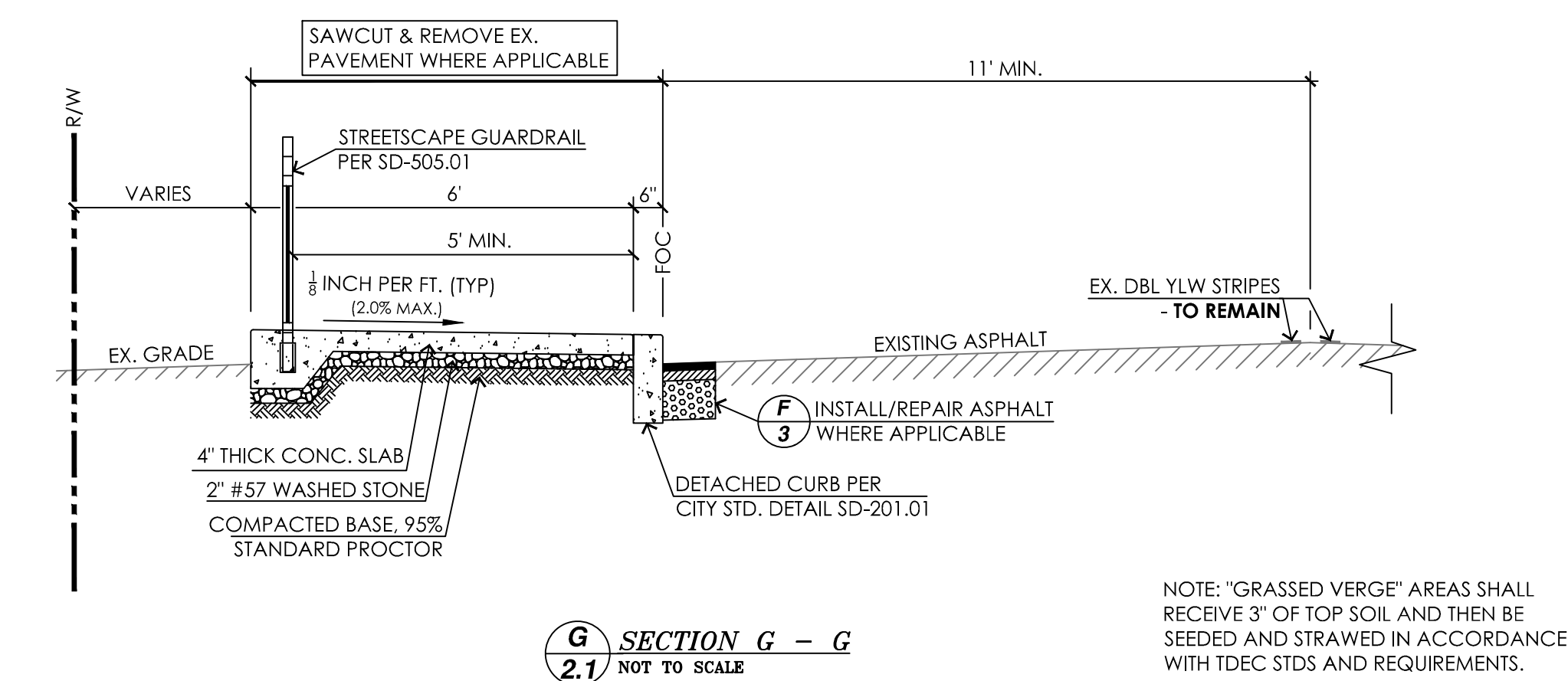
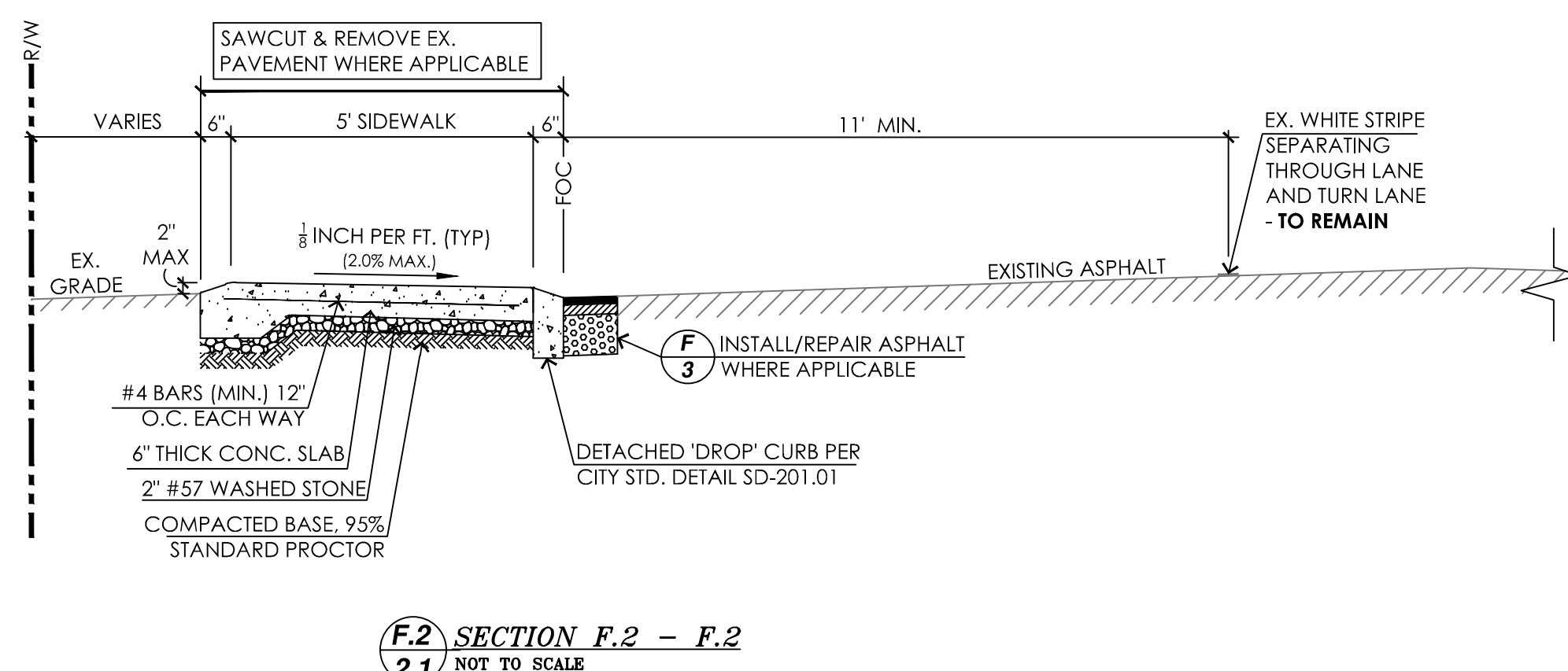
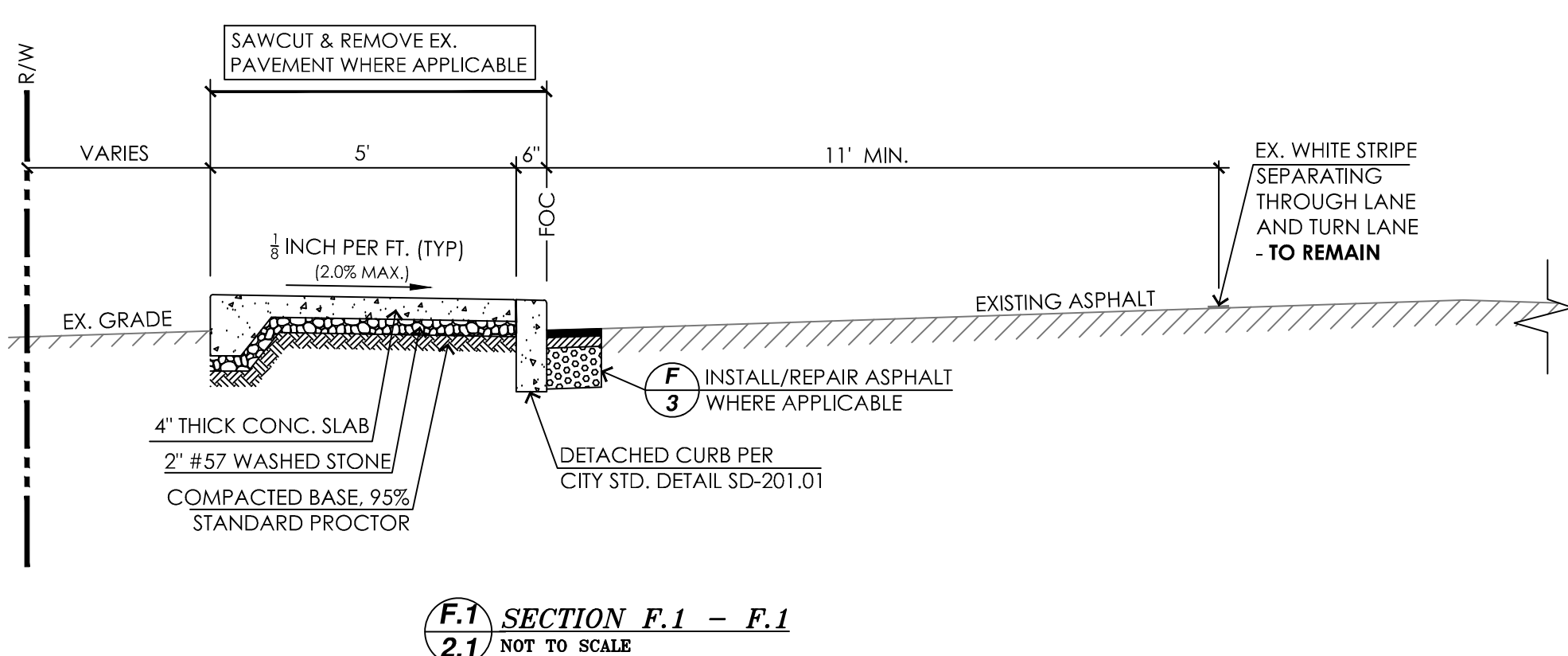
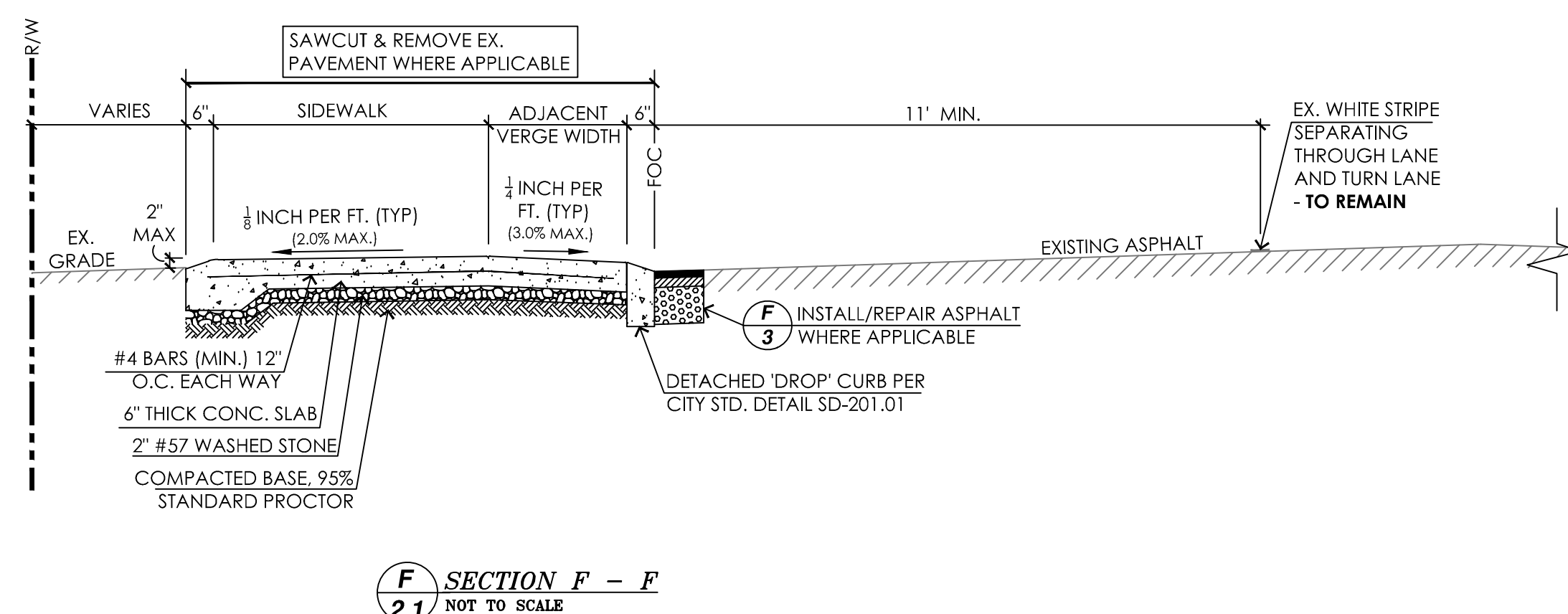
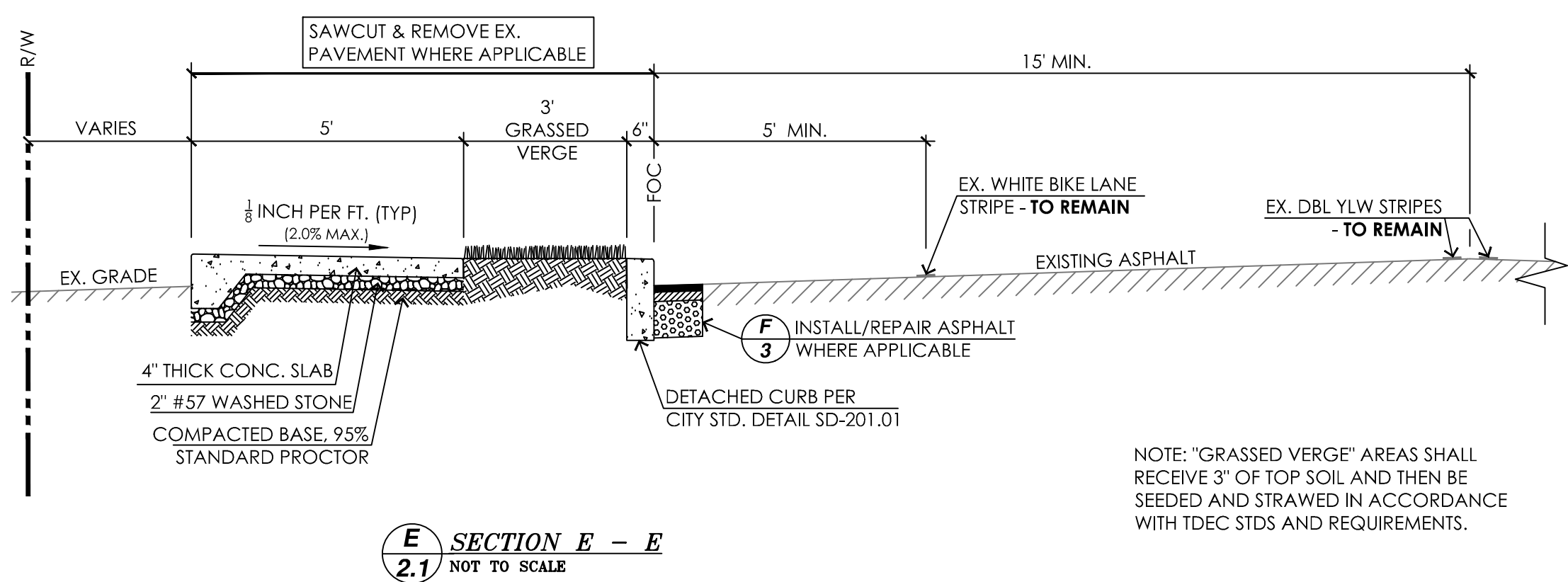
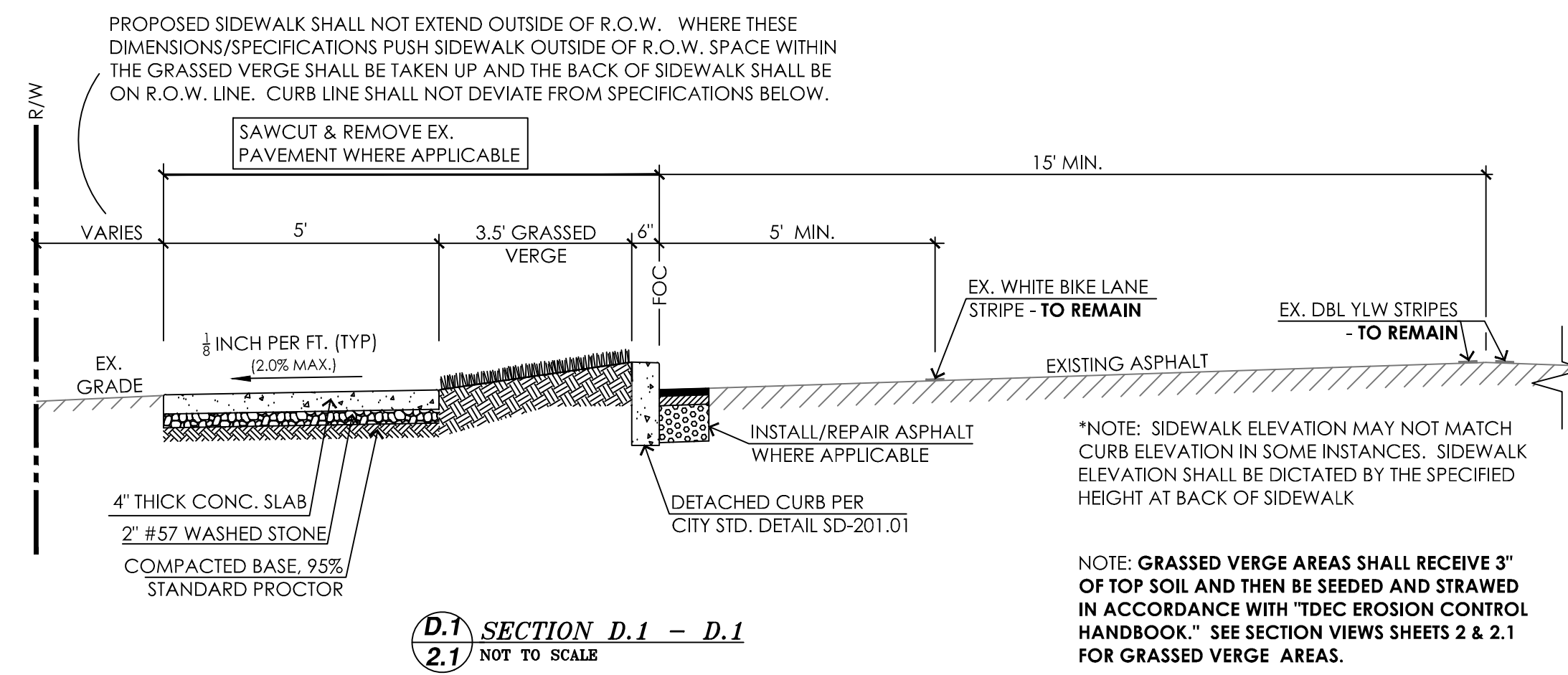
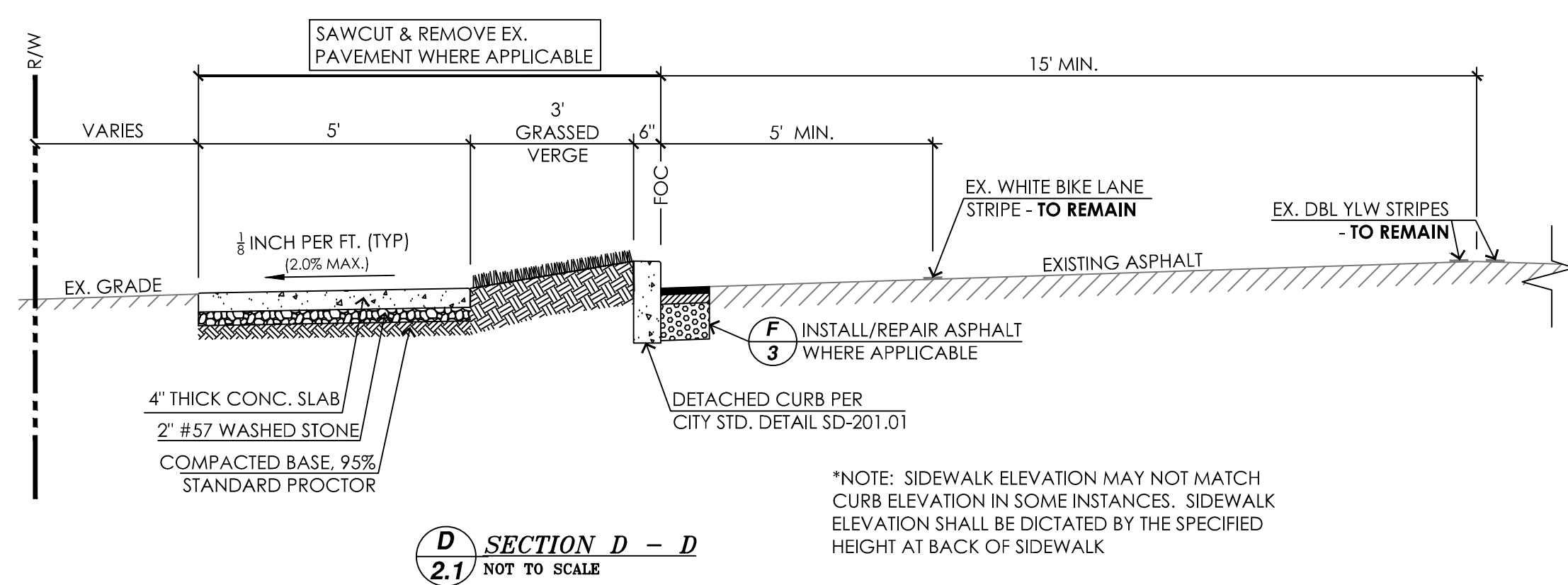












DODDS AVENUE - CDBG SIDEWALK

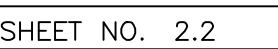
## TYPICAL SECTIONS

[illegible]

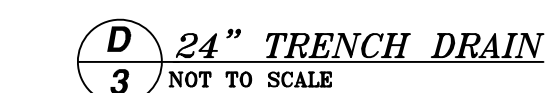
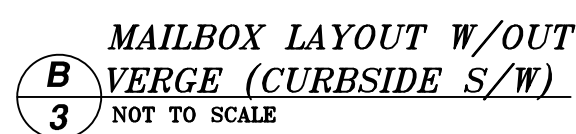
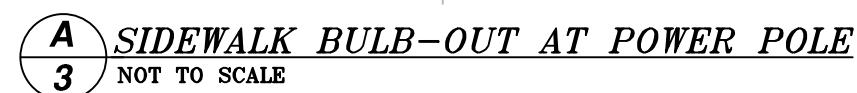
DATE:	02/13/2018
CONTRACT#	T-17-006
SCALE:	1" = 20'
DRAWN:	GMH
CHECKED:	CHATT.



SHEET NO. 2.1

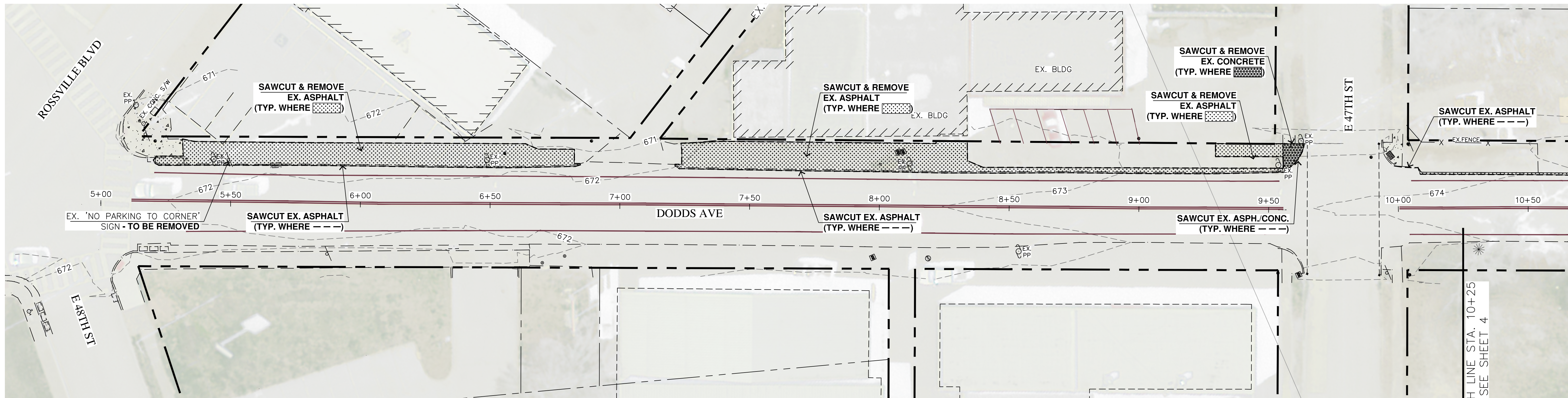






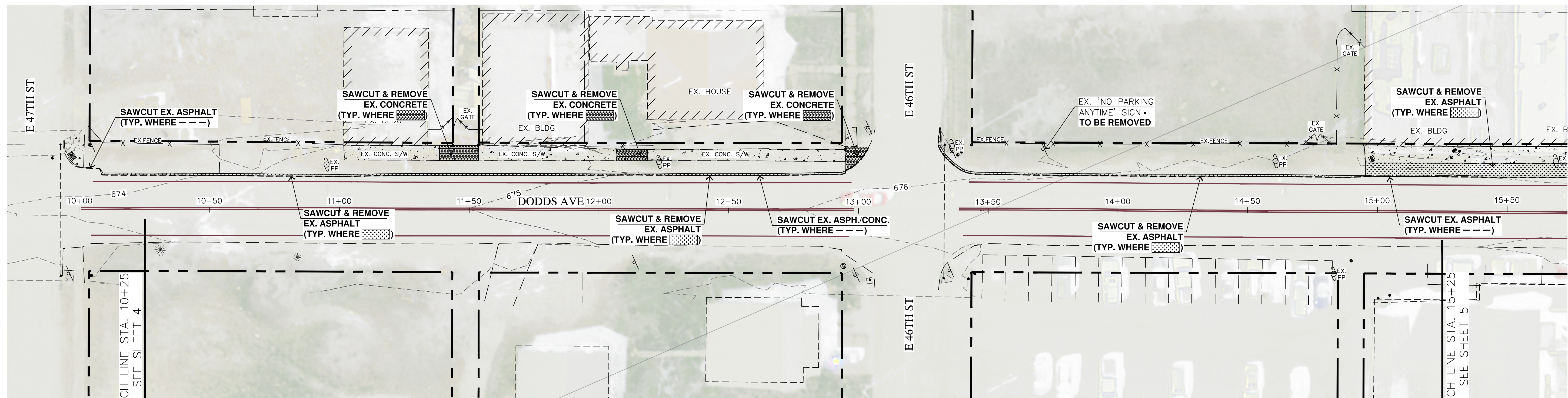


NOTE: FOR ANY WATER METERS, WATER VALVES, GAS VALVES, UTILITY POLES, OR OTHER ITEMS OF POSSIBLE CONFLICT WITHIN DEMO AREAS, SEE SITE & GRADING PLAN FOR APPROPRIATE TREATMENT.



STA. 5+30 - 10+25

SCALE: 1"=20'



STA. 10+25 - 15+25

SCALE: 1"=20'



CITY OF CHATTANOOGA  
DEPARTMENT OF  
TRANSPORTATION

BLYTHE BAILEY

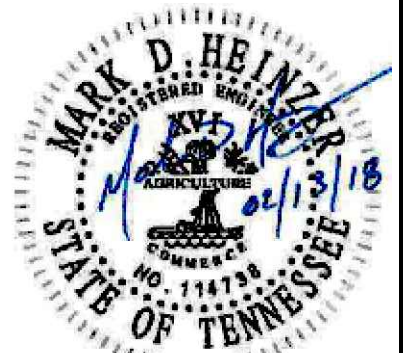
MARK D. HEINZER

DODDS AVENUE - CDBG SIDEWALK

DEMO  
PLAN

REVISIONS	DATE

DATE: 02/13/2018  
CONTRACT# T-17-006  
SCALE: 1" = 20'  
DRAWN: GMH  
CHECKED: CHATT.

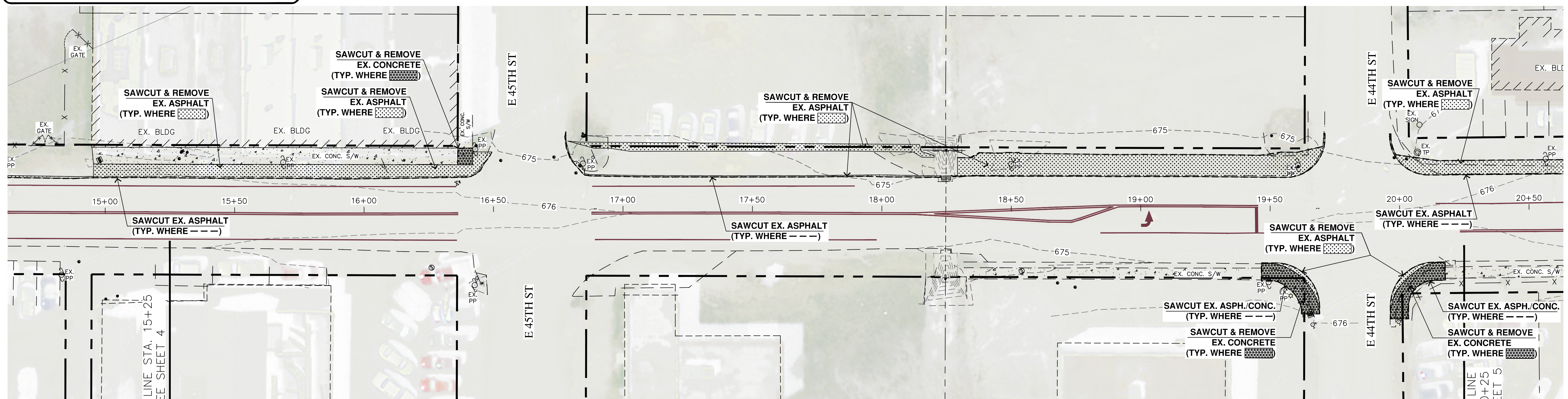


TN REGISTRATION NO. 114738

SHEET NO. 4



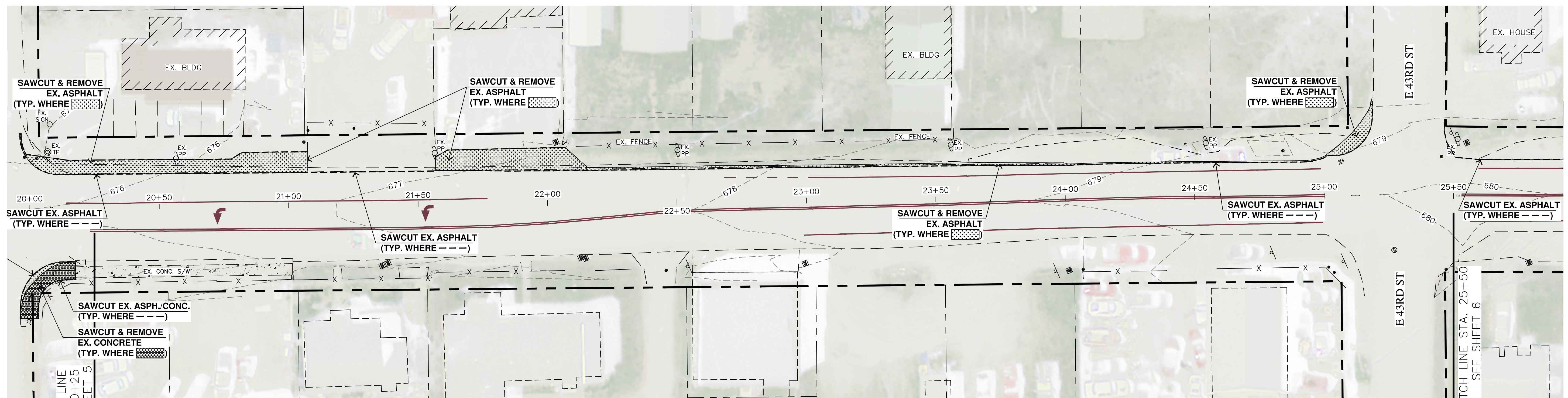
NOTE: FOR ANY WATER METERS, WATER VALVES,  
GAS VALVES, UTILITY POLES, OR OTHER ITEMS OF  
POSSIBLE CONFLICT WITHIN DEMO AREAS, SEE SITE  
& GRADING PLAN FOR APPROPRIATE TREATMENT.



STA. 15+25 - 20+25

0 20' 40'

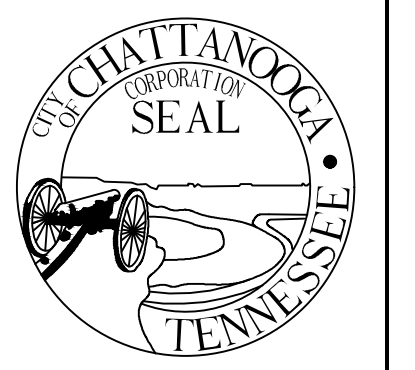
SCALE: 1"=20'



STA. 20+25 - 25+50

0 20' 40'

SCALE: 1"=20'



CITY OF CHATTANOOGA  
DEPARTMENT OF  
TRANSPORTATION

BLYTHE BAILEY

MARK D. HEINZER

DODDS AVENUE - CDBG SIDEWALK

DEMO  
PLAN

REVISIONS	DATE

DATE: 02/13/2018  
CONTRACT# T-17-006  
SCALE: 1" = 20'  
DRAWN: GMH  
CHECKED: CHATT.

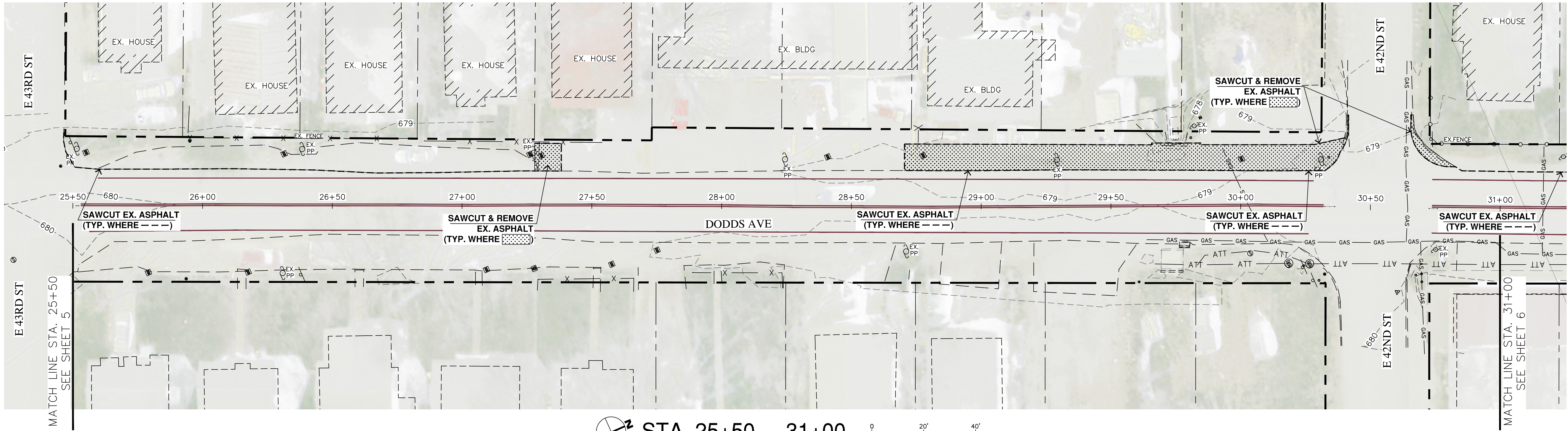


TN REGISTRATION NO. 114738

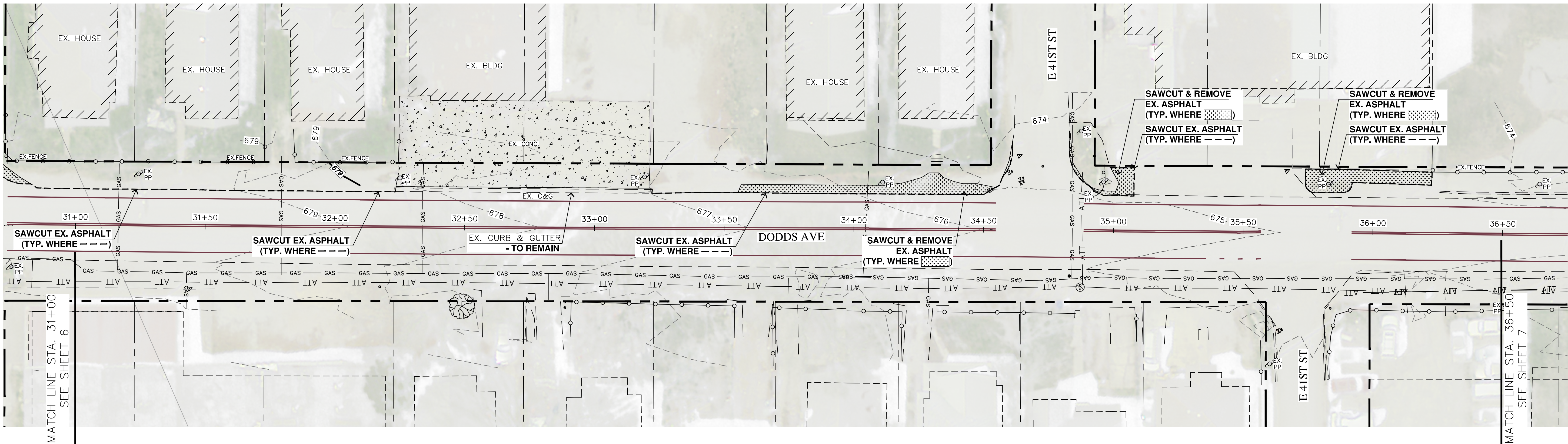
SHEET NO. 5



NOTE: FOR ANY WATER METERS, WATER VALVES, GAS VALVES, UTILITY POLES, OR OTHER ITEMS OF POSSIBLE CONFLICT WITHIN DEMO AREAS, SEE SITE & GRADING PLAN FOR APPROPRIATE TREATMENT.



STA. 25+50 - 31+00  
SCALE: 1"=20'



STA. 31+00 - 36+50  
SCALE: 1"=20'



CITY OF CHATTANOOGA  
DEPARTMENT OF TRANSPORTATION

BLYTHE BAILEY

MARK D. HEINZER

DODDS AVENUE - CDBG SIDEWALK

DEMO PLAN

REVISIONS	DATE

DATE: 02/13/2018  
CONTRACT# T-17-006  
SCALE: 1" = 20'  
DRAWN: GMH  
CHECKED: CHATT.





TN REGISTRATION NO. 114738

SHEET NO. 6



[illegible]

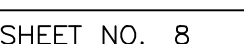
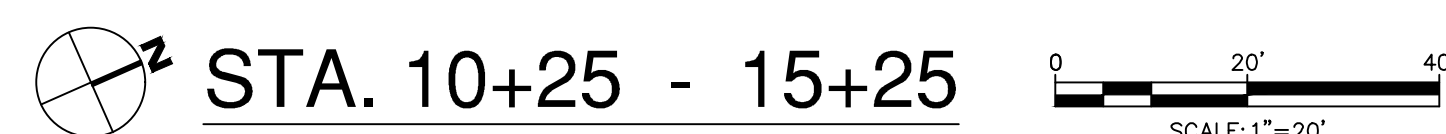
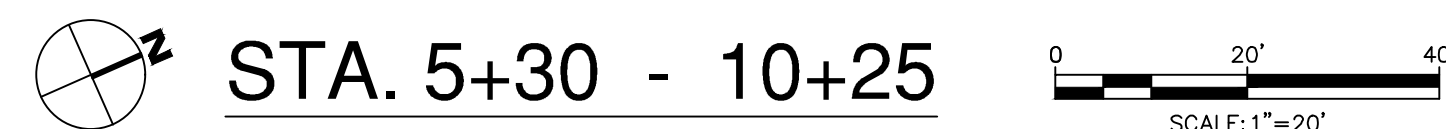
Plan view of proposed street improvements on Dodds Ave from station 41+75 to 47+00. The plan shows the relocation of the centerline, removal of existing concrete and asphalt, and installation of new concrete and asphalt. Key features include the relocation of the centerline, removal of existing concrete and asphalt, and installation of new concrete and asphalt. The plan also shows the relocation of the centerline, removal of existing concrete and asphalt, and installation of new concrete and asphalt. The plan includes stationing from 41+75 to 47+00 and various callouts for construction details.

 **STA. 41+75 - 46+61**  SCALE: 1"=20'





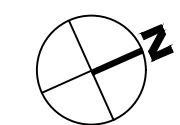
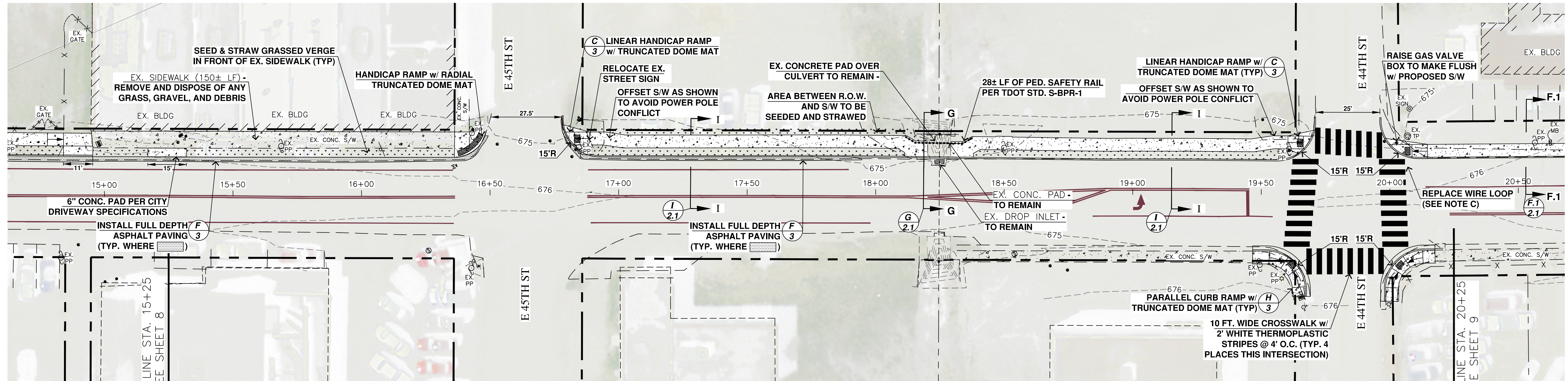
**NOTE: GRASSED VERGE AREAS SHALL RECEIVE 3" OF TOP SOIL AND THEN BE SEEDED AND STRAWED IN ACCORDANCE WITH "TDEC EROSION CONTROL HANDBOOK." SEE SECTION VIEWS SHEETS 2 & 2.1 FOR GRASSED VERGE AREAS.**





NOTE: FOR GAS, WATER, OR OTHER UTILITY RELOCATIONS OR ADJUSTMENTS; CONTRACTOR SHALL COORDINATE WITH THE UTILITY PROVIDER (E.G. TENNESSEE AMERICAN WATER, CHATTANOOGA GAS, ETC.) REGARDING THE STANDARDS & REQUIREMENTS FOR THE ADJUSTMENT OR RELOCATION OF THE IMPACTED ITEMS.

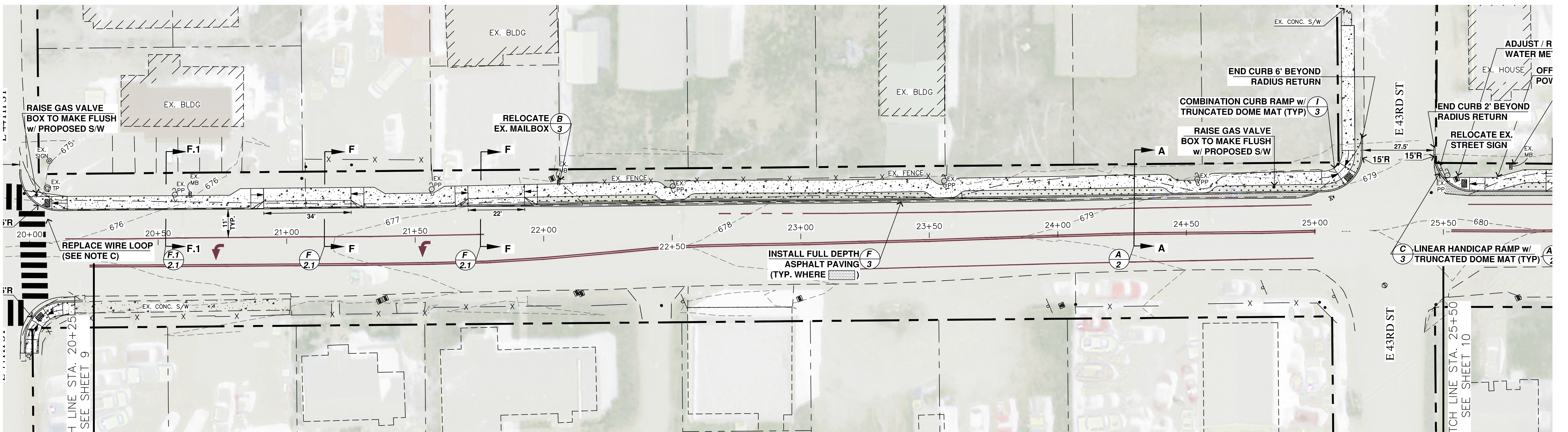
NOTE: GRASSED VERGE AREAS SHALL RECEIVE 3" OF TOP SOIL AND THEN BE SEEDED AND STRAWED IN ACCORDANCE WITH "TDEC EROSION CONTROL HANDBOOK." SEE SECTION VIEWS SHEETS 2 & 2.1 FOR GRASSED VERGE AREAS.



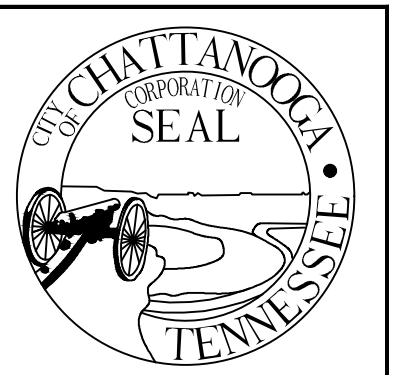
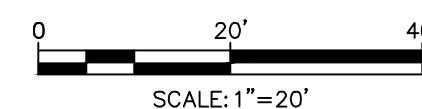
STA. 15+25 - 20+25



NOTE C: CONTRACTOR SHALL INSTALL NEW WIRE LOOP FOR TRAFFIC SIGNAL. CITY TRAFFIC ENGINEER'S STAFF/CREW SHALL INSTALL NEW CONDUIT (AS PROVIDED BY CONTRACTOR) THROUGH CURB FORMS. CONTRACTOR SHALL COORDINATE WITH THE CITY OF CHATTANOOGA TRAFFIC ENGINEER 3 WORKING DAYS PRIOR TO INSTALLATION. CITY TRAFFIC ENGINEER: TOMMY TROTTER 423-643-5958, TTROTTER@CHATTANOOGA.GOV



STA. 20+25 - 25+50



CITY OF CHATTANOOGA  
DEPARTMENT OF  
TRANSPORTATION

BLYTHE BAILEY

MARK D. HEINZER

DODDS AVENUE - CDBG SIDEWALK

SITE &  
GRADING  
PLAN

REVISIONS	DATE

DATE: 02/13/2018  
CONTRACT# T-17-006  
SCALE: 1" = 20'  
DRAWN: GMH  
CHECKED: CHATT.

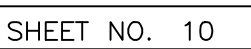
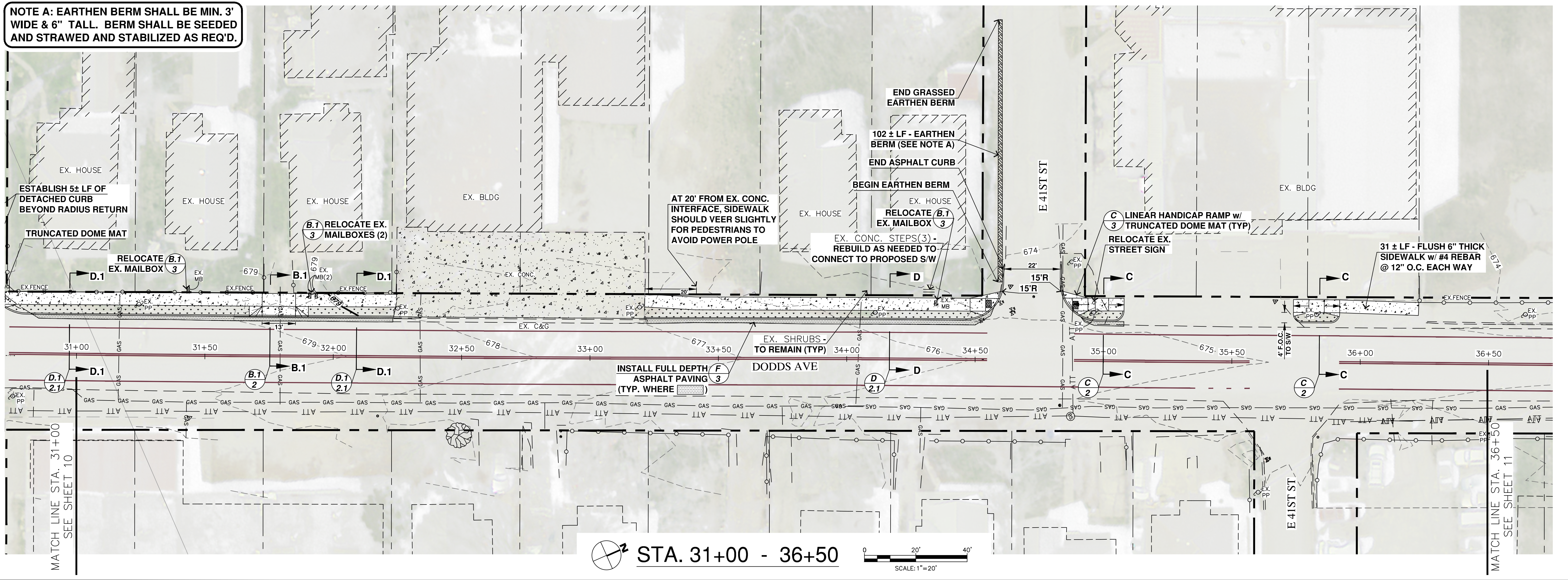


TN REGISTRATION NO. 114738

SHEET NO. 9



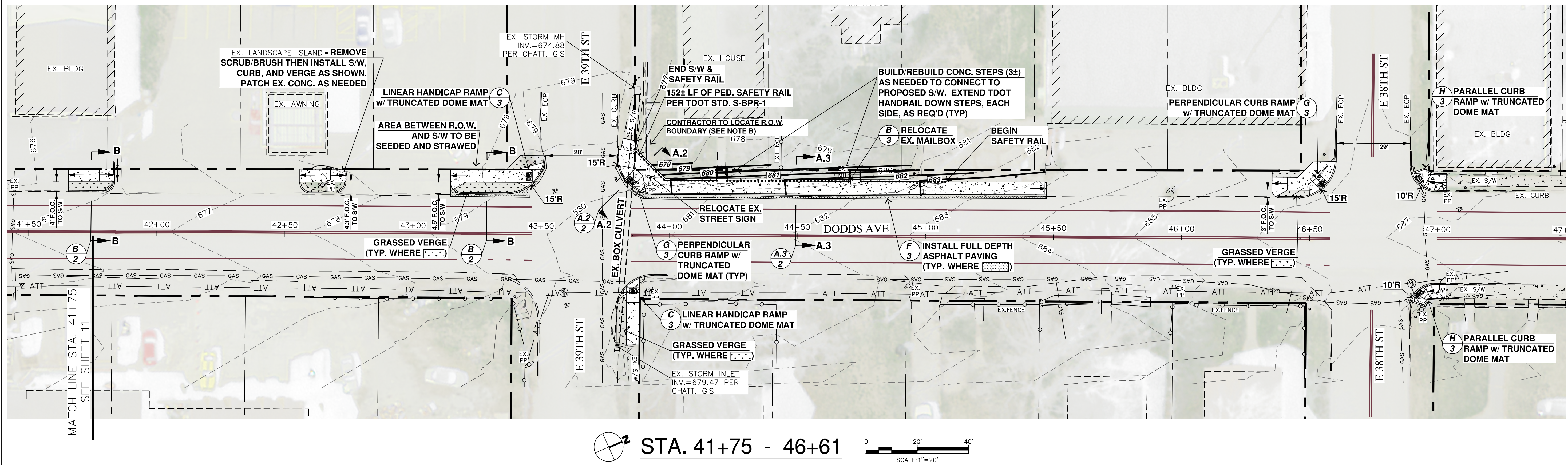
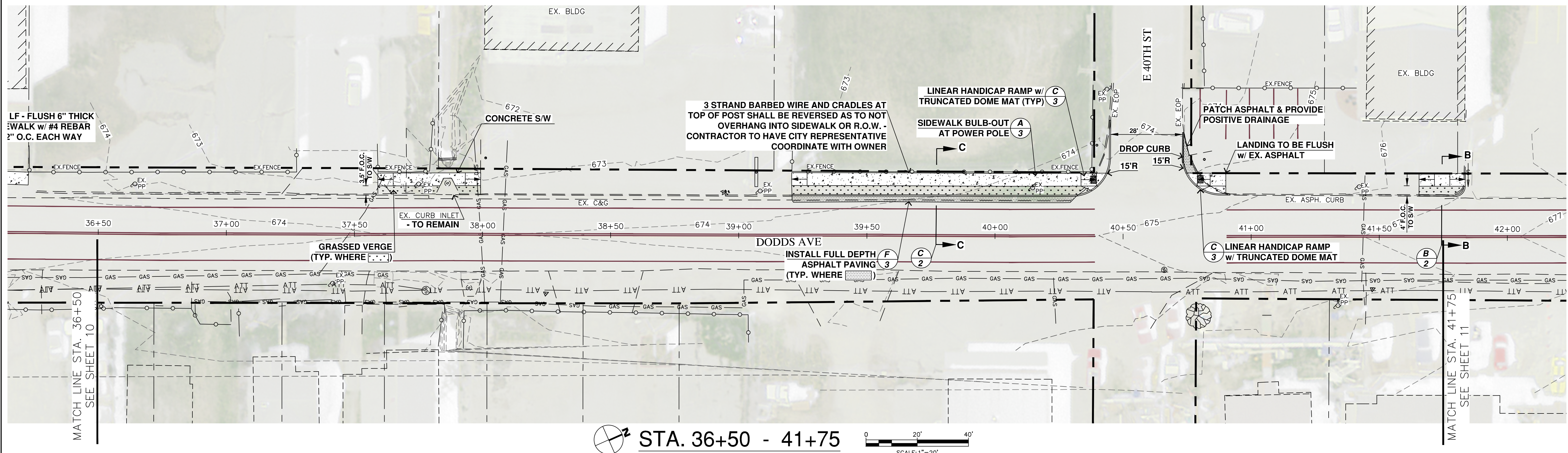
**NOTE: GRASSED VERGE AREAS SHALL RECEIVE 3" OF TOP SOIL AND THEN BE SEEDED AND STRAWED IN ACCORDANCE WITH "TDEC EROSION CONTROL HANDBOOK." SEE SECTION VIEWS SHEETS 2 & 2.1 FOR GRASSED VERGE AREAS.**





NOTE: FOR GAS, WATER, OR OTHER UTILITY RELOCATIONS OR ADJUSTMENTS; CONTRACTOR SHALL COORDINATE WITH THE UTILITY PROVIDER (E.G. TENNESSEE AMERICAN WATER, CHATTANOOGA GAS, ETC.) REGARDING THE STANDARDS & REQUIREMENTS FOR THE ADJUSTMENT OR RELOCATION OF THE IMPACTED ITEMS.

NOTE: GRASSED VERGE AREAS SHALL RECEIVE 3" OF TOP SOIL AND THEN BE SEEDED AND STRAWED IN ACCORDANCE WITH "TDEC EROSION CONTROL HANDBOOK." SEE SECTION VIEWS SHEETS 2 & 2.1 FOR GRASSED VERGE AREAS.



CITY OF CHATTANOOGA  
DEPARTMENT OF  
TRANSPORTATION

BLYTHE BAILEY

MARK D. HEINZER

DODDS AVENUE - CDBG SIDEWALK

SITE &  
GRADING  
PLAN

REVISIONS	DATE

DATE: 02/13/2018  
CONTRACT# T-17-006  
SCALE: 1" = 20'  
DRAWN: GMH  
CHECKED: CHATT.



SHEET NO. 11