

ADDENDUM NO. 3

DATE: August 18, 2021

TO: All Bidders

FROM: Taylor Childress, Procurement Specialist

SUBJECT: Addendum No. 2 – Underground Storage Tank Repairs

SUBMISSIONS DUE: August 24, 2021 2:30 PM (Eastern Time)

This addendum is being published to provide clarification regarding the above referenced request for quotes. This addendum becomes a part of the contract document and modifies the original specification as follows:

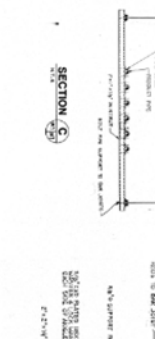
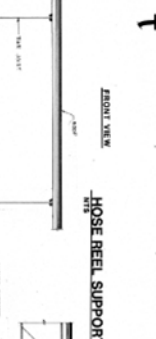
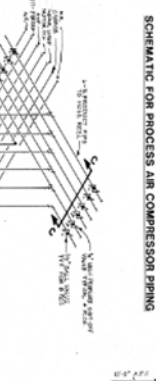
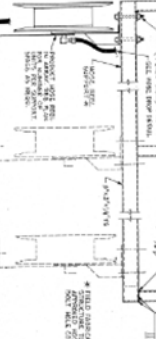
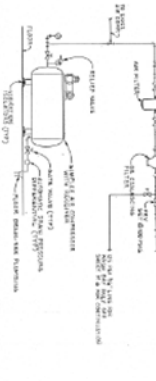
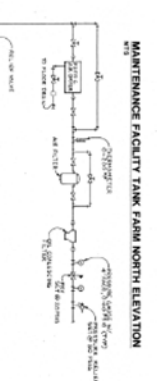
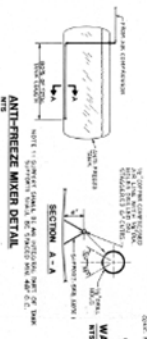
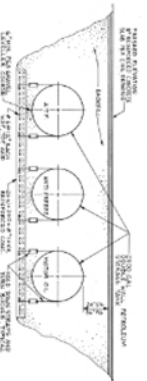
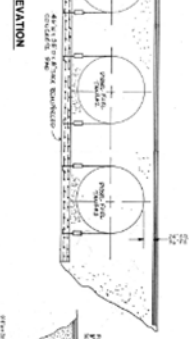
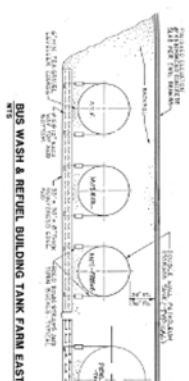
Items for Clarification:

UNDERGROUND TANK SCHEDULE

| DESCRIPTION | CAPACITY GALLONS | DIMENSIONS | | FILL PIPE | CONNECTION SIZES | | | VENT | REMARKS |
|------------------------------------|---------------------|-------------|---------|--------------|--------------------|--------|----------|------|-------------|
| | | DIA. (I.D.) | LENGTH | | SUCTION/ SUPPLY | RETURN | SOUNDING | | |
| DIESEL FUEL TANK 1 & 2 & 3 | 20,000 | 10'-5" | 54'-8" | 4" | 2" | 2" | 2" | 2" | 1,2,3,4,5,6 |
| MOTOR OIL(M) | 4,000 | 5'-4" | 24'-10" | 4" | 2" | -- | 2" | 2" | 1,2,3,4,6 |
| MOTOR OIL(S) | 4,000 | 7'-0" | 14'-10" | 4" | 2" | -- | 2" | 2" | 1,2,3,4,6 |
| AUTOMATIC TRANSMISSION FLUID | 2,500 | 5'-4" | 15'-10" | 4" | 2" | -- | 2" | 2" | 1,2,3,4,6 |
| ANTIFREEZE | 2,500 | 5'-4" | 15'-10" | 4" | 2" | -- | 2" | 2" | 1,2,3,4,6 |
| WASTE OIL | 2,500 | 5'-4" | 15'-10" | 3" | 2" | -- | 2" | 2" | 1,2,3,4,6 |
| ANTIFREEZE | 4,000 | 7'-0" | 14'-10" | 4" | 2" | -- | 2" | 2" | 1,2,3,4,6 |
| AUTOMATIC TRANSMISSION FLUID | 1,000 | 5'-4" | 6'-10" | 4" | 2" | -- | 2" | 2" | 1,2,3,4,6 |
| UNLEADED FUEL | 6,000 | 8'-0" | 16'-10" | 4" | 2" | -- | 2" | 2" | 1,2,3,4,5,6 |

REMARKS:

1. ALL UNDERGROUND TANKS FOR PETROLEUM PRODUCT STORAGE SHALL BE OF DOUBLE WALL CONSTRUCTION. MEANS OF SENSING LEAKAGE IN THE ANNULAR SPACES SHALL BE PROVIDED.
2. ALL UNDERGROUND PIPING FOR PETROLEUM PRODUCT SERVICE SHALL BE OF FIBERGLAS REINFORCED PLASTIC CONSTRUCTION WITH RESINS AND JOINT ADHESIVES SELECTED FOR CHEMICAL RESISTANCE TO PETROLEUM PRODUCTS.
3. ALL RIGID PIPING SHALL TERMINATE 4" MINIMUM ABOVE BOTTOM OF TANK FOR ALL TANKS.
4. ALL ANCHORS FOR STRAPS SHALL BE HOOKED TO BOTTOM ROW OF REINFORCEMENT. THE NUMBER AND SIZE OF STRAPS AND ANCHORS SHALL BE PER MANUFACTURER'S RECOMMENDATIONS.
5. U.L. APPROVED STANDARD MANWAY.
6. BURIAL DEPTH SHALL BE AS RECOMMENDED BY NFPA 30 AND/OR MANUFACTURERS RECOMMENDATION.

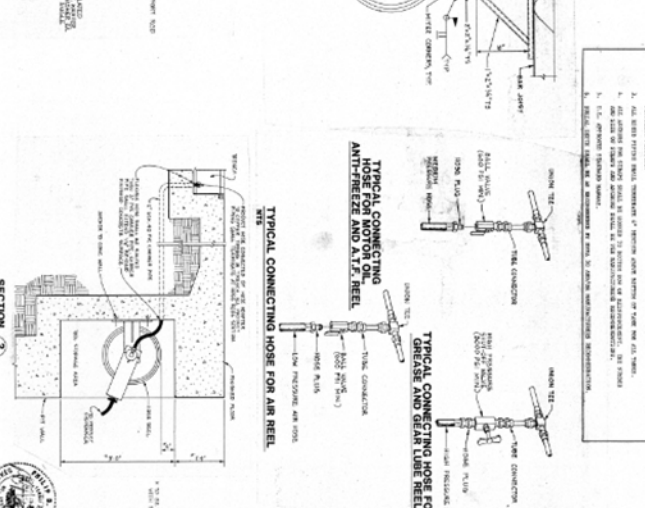


PRODUCT PUMP SCHEDULE

| ITEM NO. | DESCRIPTION | QUANTITY | UNIT | MARKET | REMARKS |
|----------|-------------|----------|------|--------|-------------|
| 1 | 1" DIAMETER | 1 | EA | 1 | 1" DIAMETER |
| 2 | 1" DIAMETER | 1 | EA | 1 | 1" DIAMETER |
| 3 | 1" DIAMETER | 1 | EA | 1 | 1" DIAMETER |
| 4 | 1" DIAMETER | 1 | EA | 1 | 1" DIAMETER |
| 5 | 1" DIAMETER | 1 | EA | 1 | 1" DIAMETER |
| 6 | 1" DIAMETER | 1 | EA | 1 | 1" DIAMETER |
| 7 | 1" DIAMETER | 1 | EA | 1 | 1" DIAMETER |
| 8 | 1" DIAMETER | 1 | EA | 1 | 1" DIAMETER |
| 9 | 1" DIAMETER | 1 | EA | 1 | 1" DIAMETER |
| 10 | 1" DIAMETER | 1 | EA | 1 | 1" DIAMETER |
| 11 | 1" DIAMETER | 1 | EA | 1 | 1" DIAMETER |
| 12 | 1" DIAMETER | 1 | EA | 1 | 1" DIAMETER |
| 13 | 1" DIAMETER | 1 | EA | 1 | 1" DIAMETER |
| 14 | 1" DIAMETER | 1 | EA | 1 | 1" DIAMETER |
| 15 | 1" DIAMETER | 1 | EA | 1 | 1" DIAMETER |
| 16 | 1" DIAMETER | 1 | EA | 1 | 1" DIAMETER |
| 17 | 1" DIAMETER | 1 | EA | 1 | 1" DIAMETER |
| 18 | 1" DIAMETER | 1 | EA | 1 | 1" DIAMETER |
| 19 | 1" DIAMETER | 1 | EA | 1 | 1" DIAMETER |
| 20 | 1" DIAMETER | 1 | EA | 1 | 1" DIAMETER |
| 21 | 1" DIAMETER | 1 | EA | 1 | 1" DIAMETER |
| 22 | 1" DIAMETER | 1 | EA | 1 | 1" DIAMETER |
| 23 | 1" DIAMETER | 1 | EA | 1 | 1" DIAMETER |
| 24 | 1" DIAMETER | 1 | EA | 1 | 1" DIAMETER |
| 25 | 1" DIAMETER | 1 | EA | 1 | 1" DIAMETER |
| 26 | 1" DIAMETER | 1 | EA | 1 | 1" DIAMETER |
| 27 | 1" DIAMETER | 1 | EA | 1 | 1" DIAMETER |
| 28 | 1" DIAMETER | 1 | EA | 1 | 1" DIAMETER |
| 29 | 1" DIAMETER | 1 | EA | 1 | 1" DIAMETER |
| 30 | 1" DIAMETER | 1 | EA | 1 | 1" DIAMETER |
| 31 | 1" DIAMETER | 1 | EA | 1 | 1" DIAMETER |
| 32 | 1" DIAMETER | 1 | EA | 1 | 1" DIAMETER |
| 33 | 1" DIAMETER | 1 | EA | 1 | 1" DIAMETER |
| 34 | 1" DIAMETER | 1 | EA | 1 | 1" DIAMETER |
| 35 | 1" DIAMETER | 1 | EA | 1 | 1" DIAMETER |
| 36 | 1" DIAMETER | 1 | EA | 1 | 1" DIAMETER |
| 37 | 1" DIAMETER | 1 | EA | 1 | 1" DIAMETER |
| 38 | 1" DIAMETER | 1 | EA | 1 | 1" DIAMETER |
| 39 | 1" DIAMETER | 1 | EA | 1 | 1" DIAMETER |
| 40 | 1" DIAMETER | 1 | EA | 1 | 1" DIAMETER |
| 41 | 1" DIAMETER | 1 | EA | 1 | 1" DIAMETER |
| 42 | 1" DIAMETER | 1 | EA | 1 | 1" DIAMETER |
| 43 | 1" DIAMETER | 1 | EA | 1 | 1" DIAMETER |
| 44 | 1" DIAMETER | 1 | EA | 1 | 1" DIAMETER |
| 45 | 1" DIAMETER | 1 | EA | 1 | 1" DIAMETER |
| 46 | 1" DIAMETER | 1 | EA | 1 | 1" DIAMETER |
| 47 | 1" DIAMETER | 1 | EA | 1 | 1" DIAMETER |
| 48 | 1" DIAMETER | 1 | EA | 1 | 1" DIAMETER |
| 49 | 1" DIAMETER | 1 | EA | 1 | 1" DIAMETER |
| 50 | 1" DIAMETER | 1 | EA | 1 | 1" DIAMETER |

UNDERGROUND TANK SCHEDULE

| ITEM NO. | DESCRIPTION | QUANTITY | UNIT | MARKET | REMARKS |
|----------|-------------|----------|------|--------|-------------|
| 1 | 1" DIAMETER | 1 | EA | 1 | 1" DIAMETER |
| 2 | 1" DIAMETER | 1 | EA | 1 | 1" DIAMETER |
| 3 | 1" DIAMETER | 1 | EA | 1 | 1" DIAMETER |
| 4 | 1" DIAMETER | 1 | EA | 1 | 1" DIAMETER |
| 5 | 1" DIAMETER | 1 | EA | 1 | 1" DIAMETER |
| 6 | 1" DIAMETER | 1 | EA | 1 | 1" DIAMETER |
| 7 | 1" DIAMETER | 1 | EA | 1 | 1" DIAMETER |
| 8 | 1" DIAMETER | 1 | EA | 1 | 1" DIAMETER |
| 9 | 1" DIAMETER | 1 | EA | 1 | 1" DIAMETER |
| 10 | 1" DIAMETER | 1 | EA | 1 | 1" DIAMETER |
| 11 | 1" DIAMETER | 1 | EA | 1 | 1" DIAMETER |
| 12 | 1" DIAMETER | 1 | EA | 1 | 1" DIAMETER |
| 13 | 1" DIAMETER | 1 | EA | 1 | 1" DIAMETER |
| 14 | 1" DIAMETER | 1 | EA | 1 | 1" DIAMETER |
| 15 | 1" DIAMETER | 1 | EA | 1 | 1" DIAMETER |
| 16 | 1" DIAMETER | 1 | EA | 1 | 1" DIAMETER |
| 17 | 1" DIAMETER | 1 | EA | 1 | 1" DIAMETER |
| 18 | 1" DIAMETER | 1 | EA | 1 | 1" DIAMETER |
| 19 | 1" DIAMETER | 1 | EA | 1 | 1" DIAMETER |
| 20 | 1" DIAMETER | 1 | EA | 1 | 1" DIAMETER |
| 21 | 1" DIAMETER | 1 | EA | 1 | 1" DIAMETER |
| 22 | 1" DIAMETER | 1 | EA | 1 | 1" DIAMETER |
| 23 | 1" DIAMETER | 1 | EA | 1 | 1" DIAMETER |
| 24 | 1" DIAMETER | 1 | EA | 1 | 1" DIAMETER |
| 25 | 1" DIAMETER | 1 | EA | 1 | 1" DIAMETER |
| 26 | 1" DIAMETER | 1 | EA | 1 | 1" DIAMETER |
| 27 | 1" DIAMETER | 1 | EA | 1 | 1" DIAMETER |
| 28 | 1" DIAMETER | 1 | EA | 1 | 1" DIAMETER |
| 29 | 1" DIAMETER | 1 | EA | 1 | 1" DIAMETER |
| 30 | 1" DIAMETER | 1 | EA | 1 | 1" DIAMETER |
| 31 | 1" DIAMETER | 1 | EA | 1 | 1" DIAMETER |
| 32 | 1" DIAMETER | 1 | EA | 1 | 1" DIAMETER |
| 33 | 1" DIAMETER | 1 | EA | 1 | 1" DIAMETER |
| 34 | 1" DIAMETER | 1 | EA | 1 | 1" DIAMETER |
| 35 | 1" DIAMETER | 1 | EA | 1 | 1" DIAMETER |
| 36 | 1" DIAMETER | 1 | EA | 1 | 1" DIAMETER |
| 37 | 1" DIAMETER | 1 | EA | 1 | 1" DIAMETER |
| 38 | 1" DIAMETER | 1 | EA | 1 | 1" DIAMETER |
| 39 | 1" DIAMETER | 1 | EA | 1 | 1" DIAMETER |
| 40 | 1" DIAMETER | 1 | EA | 1 | 1" DIAMETER |
| 41 | 1" DIAMETER | 1 | EA | 1 | 1" DIAMETER |
| 42 | 1" DIAMETER | 1 | EA | 1 | 1" DIAMETER |
| 43 | 1" DIAMETER | 1 | EA | 1 | 1" DIAMETER |
| 44 | 1" DIAMETER | 1 | EA | 1 | 1" DIAMETER |
| 45 | 1" DIAMETER | 1 | EA | 1 | 1" DIAMETER |
| 46 | 1" DIAMETER | 1 | EA | 1 | 1" DIAMETER |
| 47 | 1" DIAMETER | 1 | EA | 1 | 1" DIAMETER |
| 48 | 1" DIAMETER | 1 | EA | 1 | 1" DIAMETER |
| 49 | 1" DIAMETER | 1 | EA | 1 | 1" DIAMETER |
| 50 | 1" DIAMETER | 1 | EA | 1 | 1" DIAMETER |



DETAIL & SCHEDULES

K-TRANS MAINTENANCE AND OFFICE FACILITY

1135 MAGNOLIA AVENUE
KNOXVILLE, TENNESSEE

DuBois/Charter Control Design, P.C.
2300 Elmwood Avenue
Buffalo, N. Y. 14217
716-872-9334

Barge Waggoner Sumner and Cannon

M-7

