



Board of County Commissioners • Escambia County, Florida

Paul R. Nobles/Purchasing Manager
Office of Purchasing

August 15, 2018

To: All Known Prospective Bidders

ADDENDUM NUMBER 3:

Re: PD 17-18.074 Congestion Management Plan Phase II Sheriff's Parking Lot

All:

Your firm recently received an Invitation to Bid on the above-mentioned specification.

This Addendum Number 3 provides for updates regarding light fixtures and poles shown on Sheet 25 of the plans, as well as a correction to the Luminaire Schedule on Sheet 27. Please see the following drawings which update and correct the missing information.

This Addendum Number 3 is furnished to all known prospective bidders. Please sign and return one copy of this Addendum, with original signature, with your bid as an acknowledgement of your having received same. You may photo copy this form for your records.

Sincerely,

A handwritten signature in blue ink, appearing to read "Jeffrey Lovingood", is written over a light blue circular background.

Jeffrey Lovingood
Purchasing Specialist

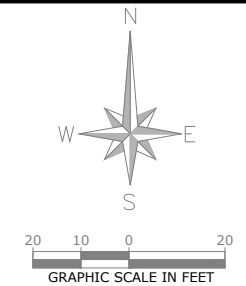
Acknowledgement of Receipt of Addendum:

SIGNED: _____

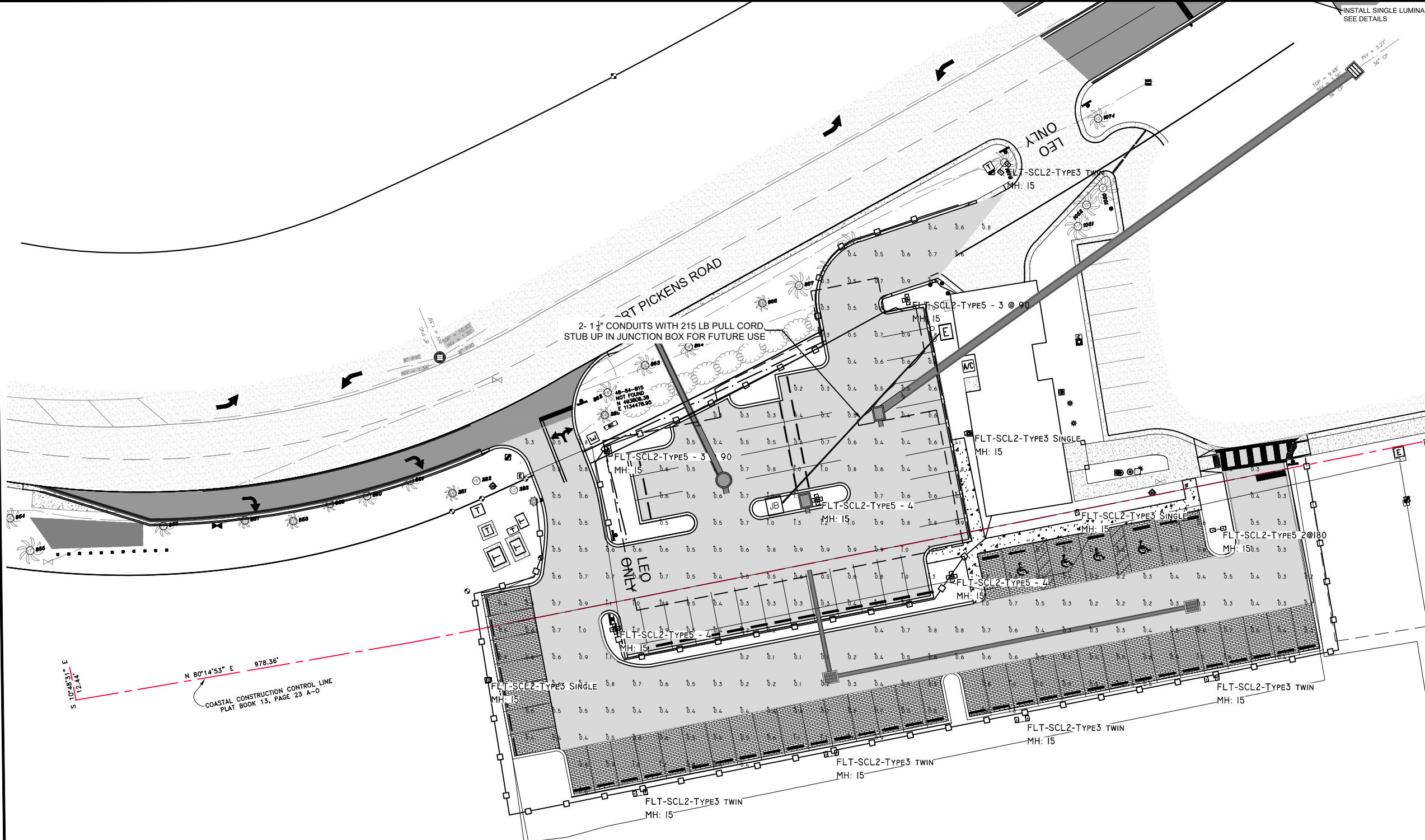
COMPANY: _____

JDL

**PENSACOLA BEACH CONGESTION
MANAGEMENT PLAN
CASINO BEACH PARKING AREA
PROPOSED PHOTOMETRIC PLAN**



- LEGEND:**
- R/W Right of way
 - BM Benchmark
 - ELEV Elevation
 - INV Invert
 - P.C.C. Point of compound curvature
 - P.I. Point of intersection
 - S.R.I.A. Santa Rosa Island Authority
 - 1/2" Capped iron rod found #1748
 - 1/2" Capped iron rod set #7073
 - 4x4 Concrete monument found #note
 - Nail and flag set
 - Backflow preventor
 - Electric equipment
 - Fire hydrant
 - Flag pole
 - Ground light
 - Light pole with base
 - Road sign
 - Soil boring
 - Sewer clean-out
 - Sprinkler control valve
 - Sanitary sewer manhole
 - Sewer valve marker
 - Telephone equipment
 - Gas marker
 - Telephone marker
 - Water meter
 - Water valve
 - Wood post
 - Guard post
 - G Gas line
 - SS Sanitary sewer line
 - UE Underground electric line
 - W Waterline
 - FM Force main
 - Palm tree
 - CAPPED REBAR FOUND
 - SHRUB
 - TREE
 - HDPE - HIGH DENSITY POLYETHYLENE PIPE
 - PB - PLAT BOOK
 - RCP - REINFORCED CONCRETE PIPE
 - PVC - POLYVINYL CHLORIDE
 - INV - INVERT OF STRUCTURE
 - TE - THROAT ELEVATION
 - RE - RIM ELEVATION
 - INV - INVERT OF STRUCTURE
 - IE - INVERT ELEVATION OF PIPE
 - PROPOSED DEMOLITION
 - RIGHT TURN LANE ASHALT
 - PROPOSED ASPHALT
 - EXISTING ASPHALT
 - PROPOSED STAMPED ASPHALT
 - PROPOSED CONCRETE
 - 10 - - - - - EXISTING CONTOUR
 - 10 - - - - - PROPOSED CONTOUR
 - SPLIT RAIL FENCE
 - SF - SF - SILT FENCE
 - FLOW ARROW
 - XX.XX PROPOSED SPOT ELEVATION
 - EX. XX.XX EXISTING SPOT ELEVATION
 - COASTAL CONSTRUCTION CONTROL LINE (CCCL)
 - JB JUNCTION BOX
 - PROPOSED LIGHT POLE, NUMBER AND ARRANGEMENT OF LUMINAIRES AS SHOWN



Luminaire Schedule						
Symbol	Qty	Label	Arrangement	LLF	Description	Filename
	3	FLT-SCL2	4 @ 90 DEGREES	0.370	SCL2 Series MOD#_ SCL2-SPMS-WH-T5	FLT-SCL2-Type5 2.1.ies
	5	FLT-SCL2	TWIN	0.370	SCL2 Series MOD#_ SCL2-SPMS-WH-T3	FLT-SCL2-Type3 3.1.ies
	2	FLT-SCL2	3 @ 90 DEGREES	0.370	SCL2 Series MOD#_ SCL2-SPMS-WH-T5	FLT-SCL2-Type5 2.1.ies
	1	FLT-SCL2	2 @ 180 DEGREES	0.370	SCL2 Series MOD#_ SCL2-SPMS-WH-T5	FLT-SCL2-Type5 2.1.ies
	5	FLT-SCL2	SINGLE	0.370	SCL2 Series MOD#_ SCL2-SPMS-WH-T3	FLT-SCL2-Type3 3.1.ies

Calculation Summary							
Label	CalcType	Units	Avg	Max	Min	Avg/Min	Max/Min
PARKING	Illuminance	Fc	0.60	1.8	0.1	6.00	18.00
Driveway	Illuminance	Fc	0.47	1.1	0.1	4.70	11.00
South Parking	Illuminance	Fc	0.77	1.8	0.3	2.57	6.00
West Parking	Illuminance	Fc	0.60	1.1	0.4	1.50	2.75



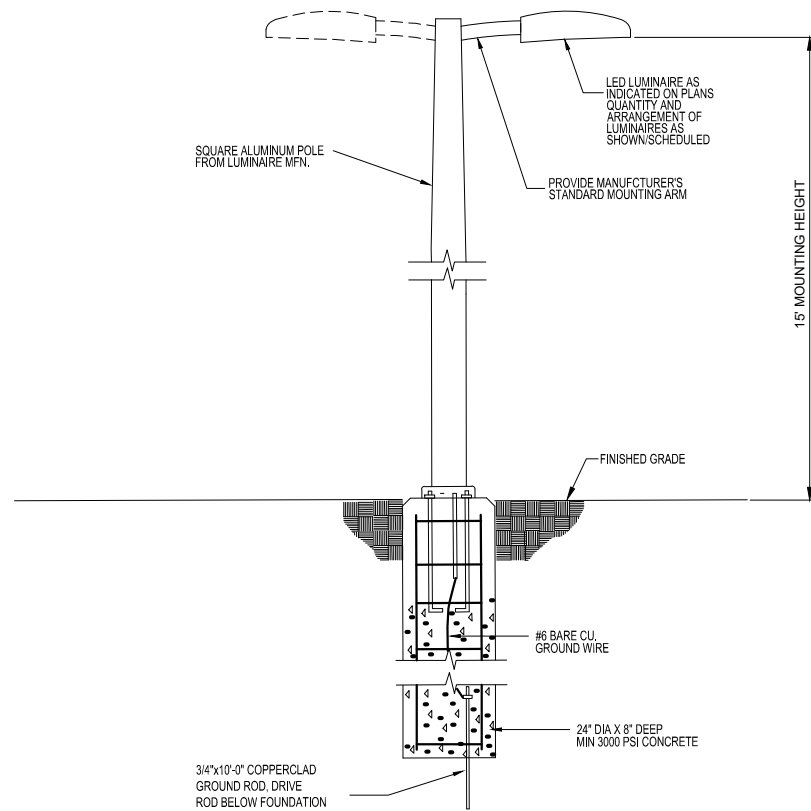
215 FAIRPOINT DRIVE
SUITE B
GULF BREEZE, FL 32561
Telephone (850) 512-8935

VOLKERT
Engineers • Surveyors • Planners

DESIGNED BY: KEN POWERS, PE
CHECKED BY: DAVID FORTE
DATE: AUGUST 2018
FIELDBOOK: PAGES 4

DATE	APPROVED BY	REVISIONS

DRAWING NUMBER
PROJECT NUMBER 635501
SURVEY NUMBER
SHEET 25 OF 31

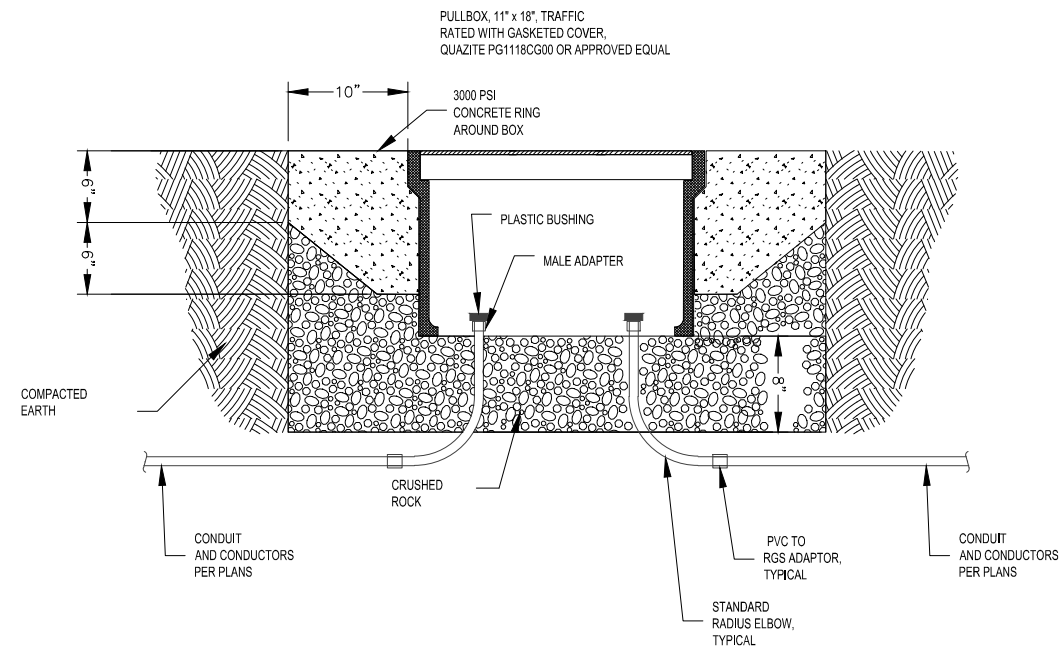


DETAIL NOTES:

1. CONCRETE FOUNDATION SHALL BE IN ACCORDANCE WITH FDOT STANDARD DRAWINGS AND SPECIFICATIONS.
2. POLES SHALL YIELD A LUMINAIRE MOUNTING HEIGHT OF APPROXIMATELY 15' UNLESS OTHERWISE NOTED.
3. ASSEMBLIES SPECIFIED ARE SOLAR TURTLE FRIENDLY LUMINAIRES PROVIDED WITH POLES AND BATTERY SYSTEM.
4. IN AREAS WITH HIGH WATER TABLE, CONTRACTOR MAY SUBSTITUTE PRE CASE FOUNDATION WITH SAME DIMENSIONS AND STRUCTURAL PROPERTIES.

GENERAL ELECTRICAL NOTES:

1. ALL WORK SHALL BE IN ACCORDANCE WITH THE NATIONAL ELECTRICAL CODE, LATEST EDITION RECOGNIZED BY THE AUTHORITY HAVING JURISDICTION, AND APPLICABLE LOCAL RULES, REGULATIONS AND ORDINANCES, COORDINATED WITH ALL DISCIPLINES.
2. UNLESS OTHERWISE NOTED, UNDERGROUND CONDUITS SHALL BE 24" BELOW GRADE AND SHALL BE SCHEDULE 40 PVC, TRANSITIONING TO RGS ABOVE GRADE; TRANSITION FROM PVC TO RGS SHALL BE MADE BELOW GRADE. INTERMEDIATE METAL CONDUIT IS NOT ACCEPTABLE.
3. ROUTING AND LOCATIONS OF EQUIPMENT SHOWN ARE APPROXIMATE; CONTRACTOR SHALL DETERMINE BEST MEANS OF ROUTING IN THE FIELD.
4. LOCATIONS OF LIGHT POLES SHALL BE STAKED BY THE CONTRACTOR PRIOR TO INSTALLATION FOR REVIEW BY OWNER AND ENGINEER.
5. POLES AND LUMINAIRES OTHER THAN THOSE SPECIFIED MAY BE SUBMITTED FOR CONSIDERATION IF SUPPORTING PHOTOMETRIC CALCULATIONS ARE ALSO PROVIDED. LUMINAIRES SHALL BE LISTED (OR BE CAPABLE OF BEING LISTED) IN FWC'S APPROVED PRODUCT LIST OF TURTLE FRIENDLY LUMINAIRES.
6. SEE LUMINAIRE SCHEDULE FOR BASIS OF LIGHTING DESIGN.



JUNCTION BOX
N.T.S.

DETAIL NOTES:

1. PROVIDE CONDUITS AND CONDUCTORS AS DENOTED ON PLAN SHEETS.

LUMINAIRE SCHEDULE

SCALE: NTS

Symbol	Qty	Label	Arrangement	LLF	Description	Filename
	3	FLT-SCL2	4 @ 90 DEGREES	0.370	SCL2 Series MOD#_ SCL2-SPMS-WH-T5	FLT-SCL2-Type5 2.1.ies
	5	FLT-SCL2	TWIN	0.370	SCL2 Series MOD#_ SCL2-SPMS-WH-T3	FLT-SCL2-Type3 3.1.ies
	2	FLT-SCL2	3 @ 90 DEGREES	0.370	SCL2 Series MOD#_ SCL2-SPMS-WH-T5	FLT-SCL2-Type5 2.1.ies
	1	FLT-SCL2	2 @ 180 DEGREES	0.370	SCL2 Series MOD#_ SCL2-SPMS-WH-T5	FLT-SCL2-Type5 2.1.ies
	5	FLT-SCL2	SINGLE	0.370	SCL2 Series MOD#_ SCL2-SPMS-WH-T3	FLT-SCL2-Type3 3.1.ies

BASIS OF DESIGN IS FIRST LIGHT TECHNOLOGIES SCL2 SERIES



215 FAIRPOINT DRIVE
SUITE B
GULF BREEZE, FL 32561
Telephone (850) 512-8935
REG. F.L.A. ENG. NO. 78362
DATE: AUGUST 2018
FIELD BOOK PAGES: 4

Volkert
Engineers • Surveyors • Planners
DESIGNED BY: KEN POWERS, PE
CHECKED BY: DAVID FORTE
DATE: AUGUST 2018
DISTRICT: 4
SECTION/TOWNSHIP/RANGE:

DATE	APPROVED BY