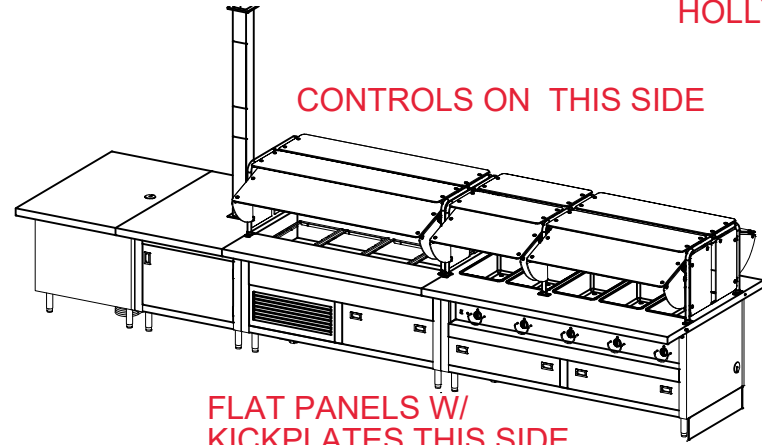


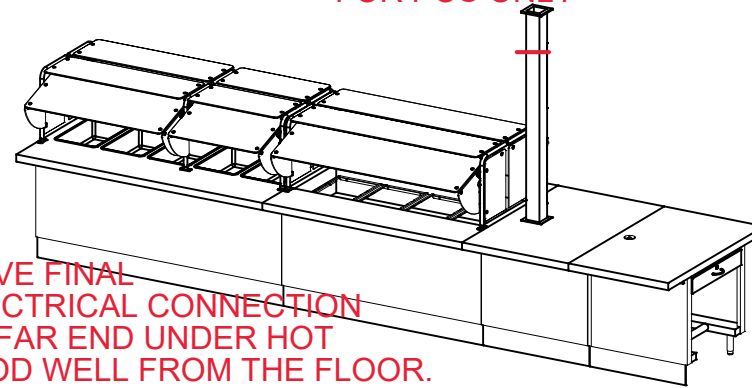
GRAND OAKS ES COLOR TO BE TEXTURED HOLLY RED

CONTROLS ON THIS SIDE



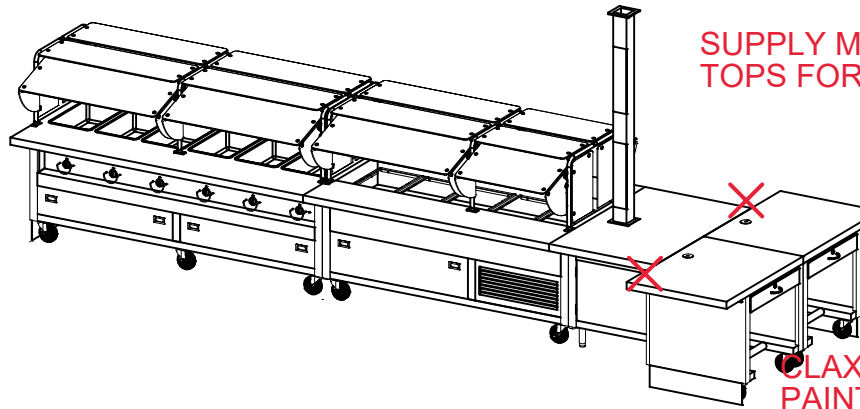
FLAT PANELS W/ KICKPLATES THIS SIDE

CHANGE THIS TO SS ROUND POST FOR POS ONLY

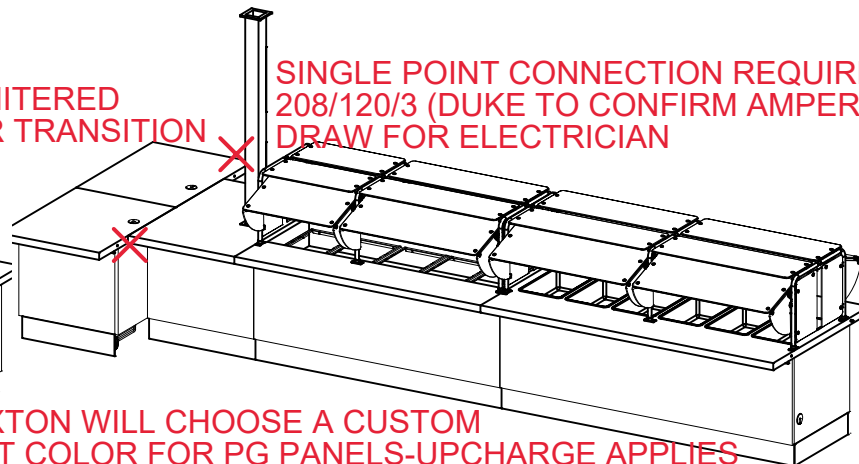


MOVE FINAL ELECTRICAL CONNECTION TO FAR END UNDER HOT FOOD WELL FROM THE FLOOR. SINGLE POINT 208/120/3 PHASE REQUIRED (DUKE CONFIRM AMPERAGE TOTAL FOR ELECTRICIAN).

CLAXTON ES



SUPPLY MITERED TOPS FOR TRANSITION

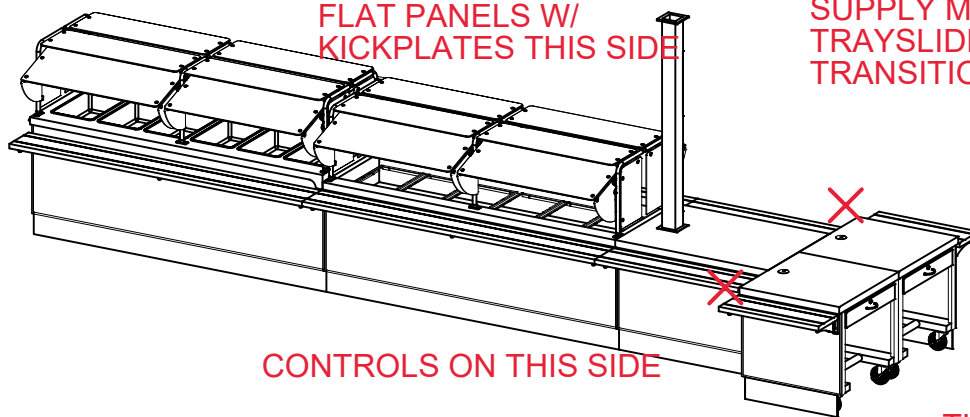


SINGLE POINT CONNECTION REQUIRED 208/120/3 (DUKE TO CONFIRM AMPERAGE DRAW FOR ELECTRICIAN)

CLAXTON WILL CHOOSE A CUSTOM PAINT COLOR FOR PG PANELS-UPCHARGE APPLIES

LAKE CITY ES

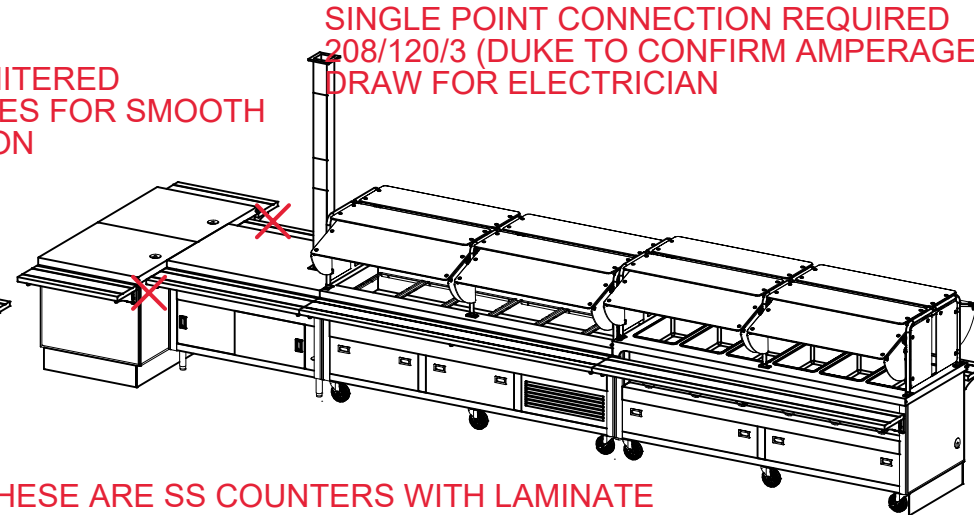
FLAT PANELS W/ KICKPLATES THIS SIDE



CONTROLS ON THIS SIDE

CASHIER STANDS TO BE 36" AT LAKE CITY

SUPPLY MITERED TRAYSIDES FOR SMOOTH TRANSITION



SINGLE POINT CONNECTION REQUIRED 208/120/3 (DUKE TO CONFIRM AMPERAGE DRAW FOR ELECTRICIAN)

THESE ARE SS COUNTERS WITH LAMINATE CHOICE IS WILSON ART 4934-38 AQUA FIZZ

3D VIEWS

THIS DRAWING AND THE INFORMATION AND DATE CONTAINED HEREIN ARE THE CONFIDENTIAL AND PROPRIETARY PROPERTY OF DUKE MANUFACTURING CO., AND MAY NOT BE REPRODUCED OR DISCLOSED FOR ANY PURPOSE, WITHOUT THE WRITTEN PERMISSION OF DUKE MANUFACTURING CO.

STANDARD SERVING SYSTEM PRACTICES

SOLID SURFACE TOPS AND TRAY SLIDES

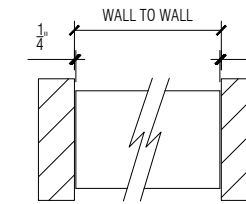
- ALL SOLID SURFACE TOPS AND TRAY SLIDES, WITH FIELD SEAMS, **WILL SHIP LOOSE**. WHEN SPANNING MORE THAN ONE UNIT.
- SOLID SURFACE TOPS AND TRAY SLIDES SPECIFIC TO SINGLE UNIT WILL SHIP INSTALLED.
- SOLID SURFACE TOPS AND TRAY SLIDES REQUIRE A **CERTIFIED** INSTALLER, SPECIFIC TO THE BRAND, TO SEAM THE UNITS IN THE FIELD DURING PRODUCT INSTALLATION.

STAINLESS STEEL TOPS AND TRAY SLIDES

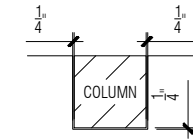
- THE MAXIMUM CONTINUOUS STAINLESS STEEL TOP LENGTH IS 144" [12'-0"], BEFORE REQUIRING A BOLTED OR WELDED FIELD JOINT.
- THE MAXIMUM CONTINUOUS STAINLESS STEEL TRAY SLIDE LENGTH IS 144" [12'-0"], BEFORE REQUIRING A BOLTED OR WELDED FIELD JOINT.
- BOLTED OR WELDED FIELD JOINTS ARE REQUIRED, AT ALL MITERED TRAY SLIDE CORNERS.

ALLOWANCE FOR FIELD CONDITIONS

- FACTORY TO ALLOW 1/4" AT ALL WALLS, COLUMNS, AND PASS THROUGH WINDOWS FOR FIT. (SEE WALL TO WALL AND COLUMN EXAMPLES)



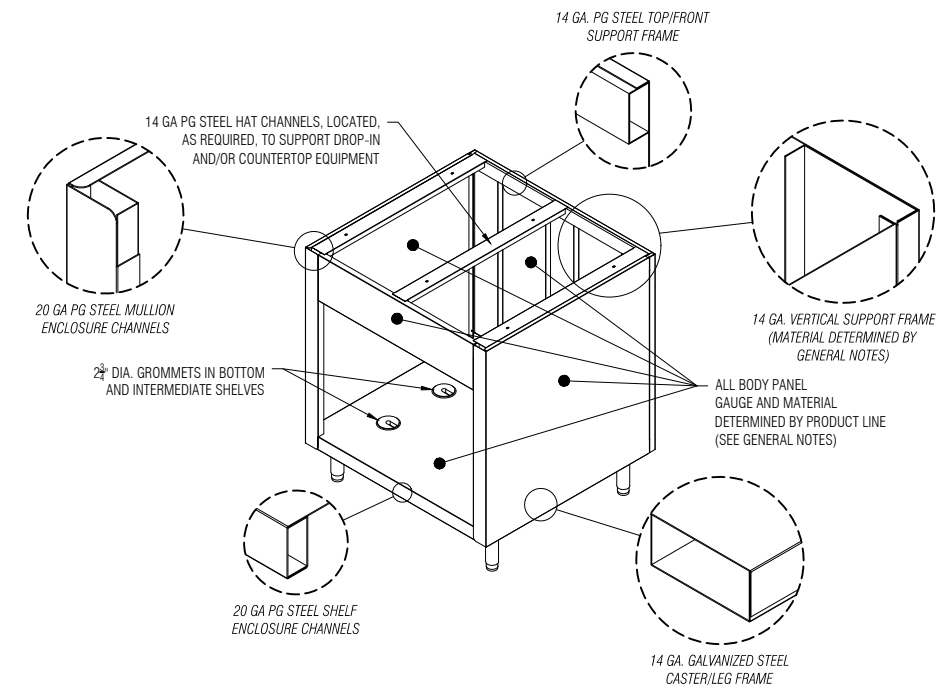
WALL TO WALL EXAMPLE



COLUMN EXAMPLE

ELECTRICAL

- ALL 15 AMP (NEMA #5-15R) AND 20 AMP (NEMA #5-20R) RECEPTACLES SHALL BE GFCI (GROUND FAULT CIRCUIT INTERRUPTER) TYPE RECEPTACLES PER DUKE MANUFACTURING STANDARD. **UNLESS SPECIFICALLY NOTED OTHERWISE** ON THE DRAWING. (SEE SYMBOL LEGEND)



STANDARD CHANNEL BODY CONSTRUCTION

SYMBOL LEGEND

DESCRIPTION	SYMBOL	DESCRIPTION	SYMBOL	DESCRIPTION	SYMBOL
SIMPLEX RECEPTACLE		DUPLEX GFCI RECEPTACLE (NEMA 5-15R & 5-20R ONLY)		ELEC. CORD AND PLUG	
KICKPLATE LOCATION		LAMINATE LOCATION		DECOR PANEL LOCATION	
EQUIPMENT TAG		FIELD JOINT LOCATION		2 1/2" GROMMET LOCATION	
VIEW TAG	VIEW NUMBER PAGE NUMBER	VIEW NAME VIEW SCALE	VIEW NUMBER PAGE NUMBER	COMPRESSOR WITH REMOVABLE GRILLE	
VIEW ARROWS					



Your Solutions Partner  
©2017 Duke Manufacturing Co.  
**DUKE MANUFACTURING COMPANY**  
2305 North Broadway  
St. Louis, MO 63102  
Ph (314) 231-1130  
Fax (314) 231-5074

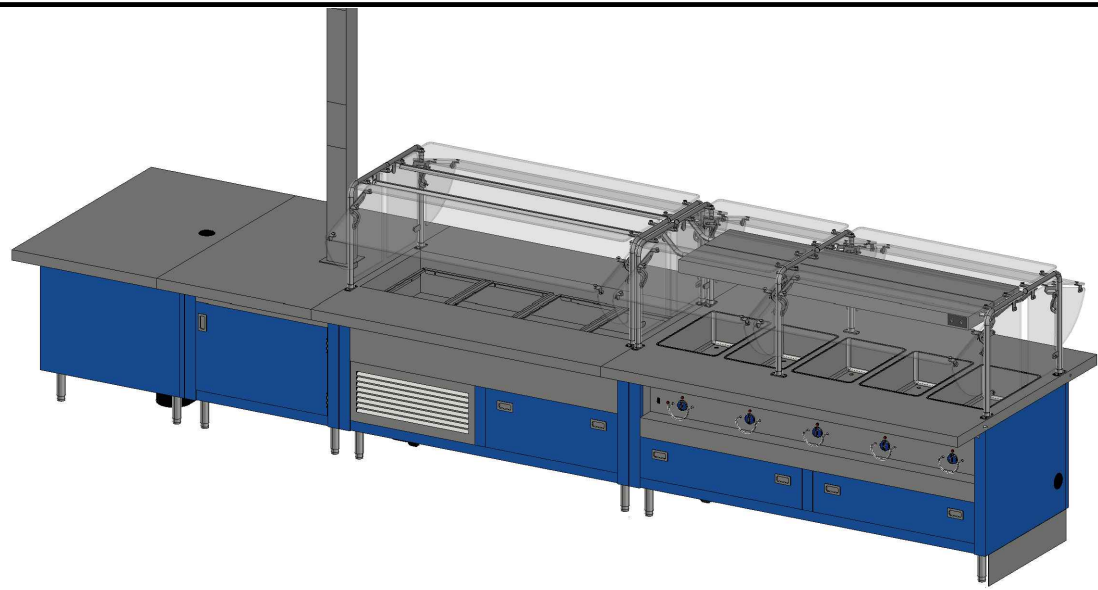
DATE: \_\_\_\_\_  
BY: \_\_\_\_\_  
SUBMITTAL

REV.	DATE	BY
A	4/13/2020	MPB
B	4/16/2020	MPB
C	4/28/2020	MPB

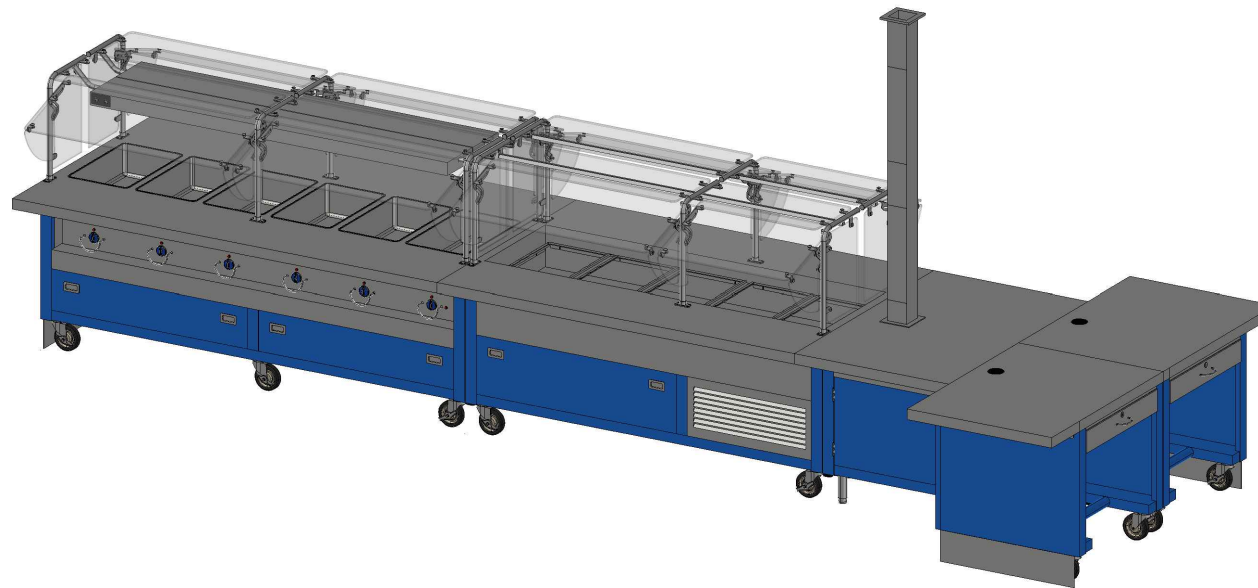
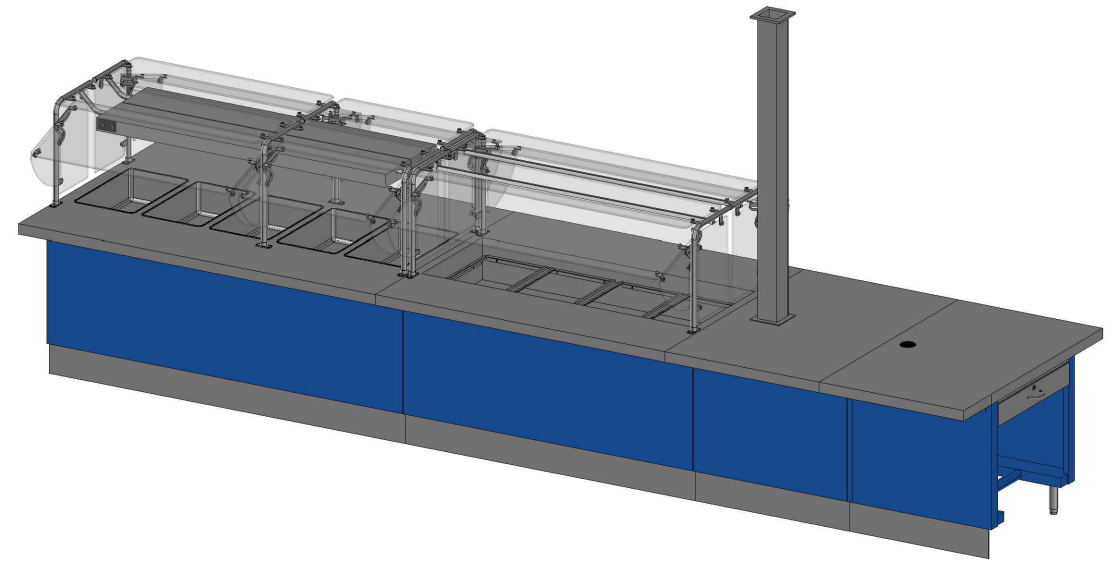
DESIGNED FOR:  
**ANDERSON COUNTY SCHOOLS**

DESIGNED BY:  
**PMR**

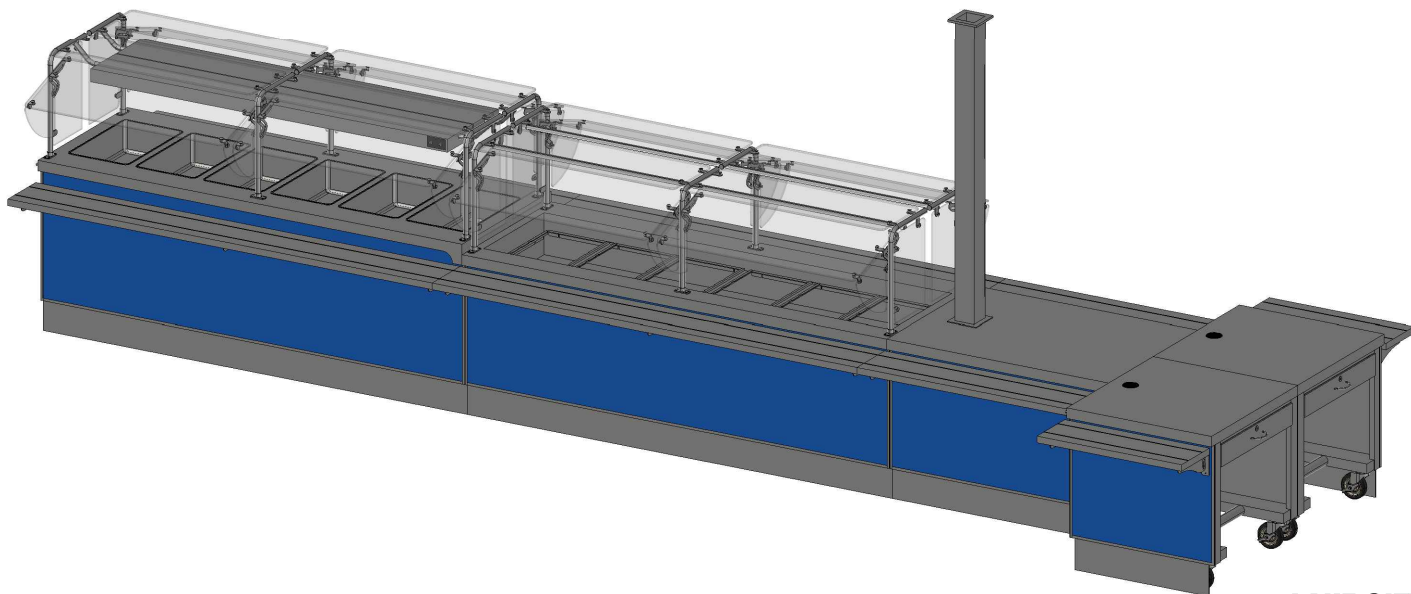
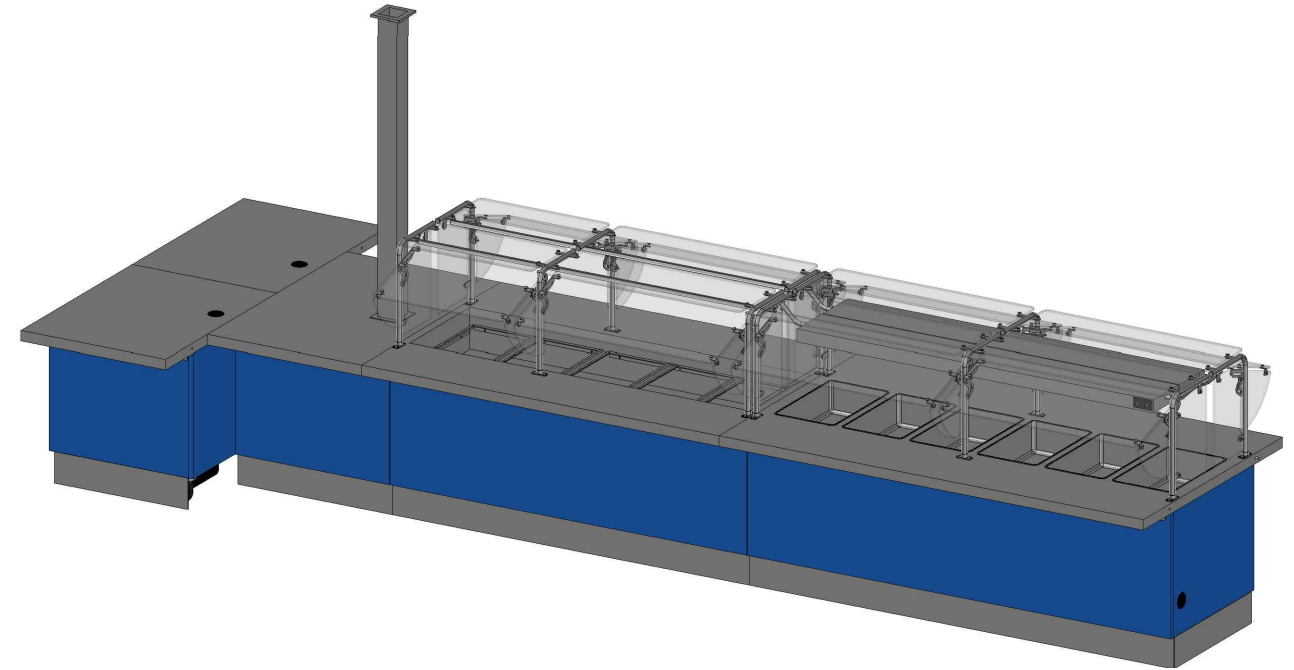
DRAWN BY: PD  
ESTIMATOR: R. TROUTT  
PURCHASE ORDER #: N/A  
SALES ORDER: N/A  
DATE: 03/25/2020  
DRAWING NO.: SD-133771  
SHEET: 5 1



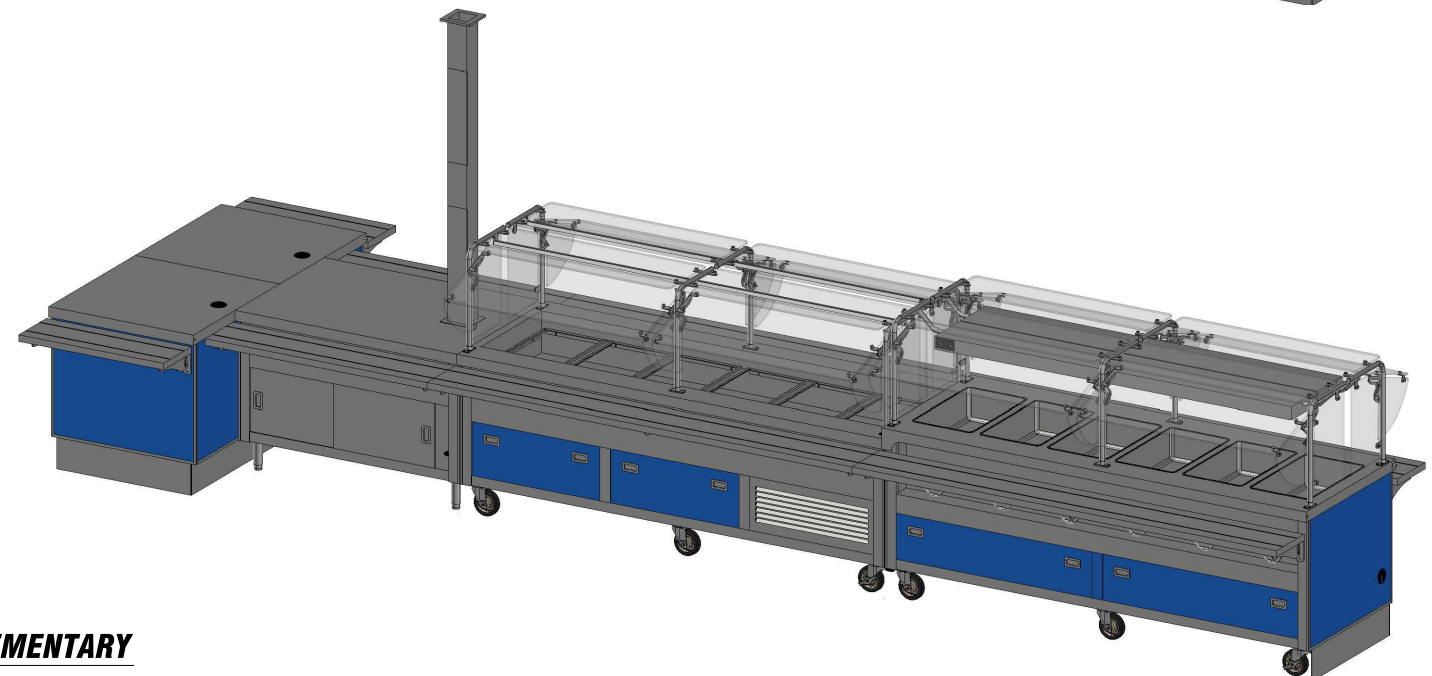
**GRAND OAKS ELEMENTARY**



**CLAXTON ELEMENTARY**



**LAKE CITY ELEMENTARY**



Your Solutions Partner  
 ©2017 Duke Manufacturing Co.  
**DUKE MANUFACTURING COMPANY**  
 2305 North Broadway  
 St. Louis, MO 63102  
 Ph (314) 231-1130  
 Fax (314) 231-5074

<b>SUBMITTAL</b>	
APPROVED FOR FABRICATION	DATE
REVISED AND READY FOR APPROVAL	DATE
FIELD APPROVED SPECIFICS	DATE

THIS DRAWING MUST BE SEaled AND RETURNED TO DUKE MANUFACTURING PRIOR TO BEING RELEASED FOR FABRICATION. ALL DIMENSIONS ARE IN INCHES UNLESS OTHERWISE NOTED. MAKE SURE THAT DIMENSIONS ARE CORRECT AND COMPONENTS ARE ASSEMBLED CORRECTLY. SINKS ARE TO BE INSTALLED AND COMPONENTS ARE TO BE ASSEMBLED PRIOR TO FABRICATION. SINKS ARE TO BE INSTALLED AND COMPONENTS ARE TO BE ASSEMBLED PRIOR TO FABRICATION. ALL DIMENSIONS ARE IN INCHES UNLESS OTHERWISE NOTED. MAKE SURE THAT DIMENSIONS ARE CORRECT AND COMPONENTS ARE ASSEMBLED CORRECTLY. SINKS ARE TO BE INSTALLED AND COMPONENTS ARE TO BE ASSEMBLED PRIOR TO FABRICATION.

REV.	DATE	BY
A	4/13/2020	MPB
B	4/16/2020	MPB
C	4/28/2020	MPB

DESIGNED FOR:  
**ANDERSON COUNTY SCHOOLS**  
 DESIGNED BY:  
**PMR**

DRAWN BY: PD  
 ESTIMATOR: R. TROUTT  
 PURCHASE ORDER #: N/A  
 SALES ORDER: N/A  
 DATE: 03/25/2020  
 DRAWING NO.: SD-133771  
 SHEET: 4  
 OF: 5



Your Solutions Partner  
 ©2017 Duke Manufacturing Co.  
**DUKE MANUFACTURING COMPANY**  
 2305 North Broadway  
 St. Louis, MO 63102  
 Ph (314) 231-1130  
 Fax (314) 231-5074

**SUBMITTAL**

DATE: \_\_\_\_\_  
 REVISED AND REDESIGNED FOR APPROVAL: \_\_\_\_\_  
 APPROVED FOR FABRICATION: \_\_\_\_\_  
 APPROVED AS FIELD: \_\_\_\_\_

THE DRAWING MUST BE SEEN AND RETURNED TO DUKE MANUFACTURING PRIOR TO BE REPRODUCED FOR ANY OTHER PROJECT. ANY REUSE OF THIS DRAWING FOR ANY OTHER PROJECT WITHOUT THE WRITTEN PERMISSION OF DUKE MANUFACTURING COMPANY IS PROHIBITED. ALL RIGHTS RESERVED.

REV.	DATE	BY
A	4/13/2020	MPB
B	4/16/2020	MPB
C	4/28/2020	MPB

DESIGNED FOR:  
**ANDERSON COUNTY SCHOOLS**

DESIGNED BY:  
**PMR**

DRAWN BY: PD  
 ESTIMATOR: R. TROUTT  
 PURCHASE ORDER #: N/A  
 SALES ORDER: N/A  
 DATE: 03/25/2020  
 DRAWING NO.: SD-133771  
 SHEET: OF: 5 **3**

**GRAND OAKS ELEMENTARY**

**NOTE:**  
 SNEEZE GUARDS NOT SHOWN IN PLAN VIEW

**NOTE:**  
 UNITS ON LEGS W/ILDS NOT COMPLY WITH NSF STANDARD

**GENERAL NOTES**

THIS DRAWING AND THE INFORMATION AND DATE CONTAINED HEREIN ARE THE CONFIDENTIAL AND PROPRIETARY PROPERTY OF DUKE MANUFACTURING CO., AND MAY NOT BE REPRODUCED OR DISCLOSED FOR ANY PURPOSE, WITHOUT THE WRITTEN PERMISSION OF DUKE MANUFACTURING CO.

**THE FOLLOWING MUST BE VERIFIED PRIOR TO CONSTRUCTION**

- ANY DECOR COLOR CHOICES INCLUDING LAMINATE, PAINT COLOR, OR CUSTOM DECOR FEATURES, IF APPLICABLE
- ALL ELECTRICAL VOLTAGE AND PHASE OF DUKE HOT FOOD UNITS AND BUYOUT EQUIPMENT IF APPLICABLE
- ALL CRITICAL FIELD DIMENSION IF ANY AS INDICATED IN PLAN VIEW.

**THURMADUKE SERVING SYSTEMS**

**TOPS**

14 GA. STAINLESS STEEL TOPS.

**BODIES & INTERIORS**

14 GA. PAINT GRIP STEEL FRAME/SUPPORTS W/20 GA. PAINT GRIP STEEL ENCLOSURE CHANNELS. BODY PANELS AND INTERIOR SHELVES W/ POWDER COAT FINISH.

\*POWDER COAT COLOR:..... #217120 - SKY BLUE

**LEGS**

6" HIGH, 1 5/8" Ø STAINLESS STEEL TUBULAR LEGS WITH ADJUSTABLE FEET.

**KICKPLATES**

HEAVY GAUGE STAINLESS STEEL KICK PLATES LOCATED WHERE INDICATED BY SCHEDULE.

**HOT FOOD DRAINS**

DRAINS MANIFOLDED W/ COPPER TUBING TO BRASS MASTER VALVE. EXTEND MASTER VALVE FORWARD. TO INCLUDE HOSE BIB CONNECTION & 48" OF ½" DIA. HOSE.  
 DRAIN TURNED 90° AT DARIN VALVE.

**NSF-7 COLD PAN UNITS**

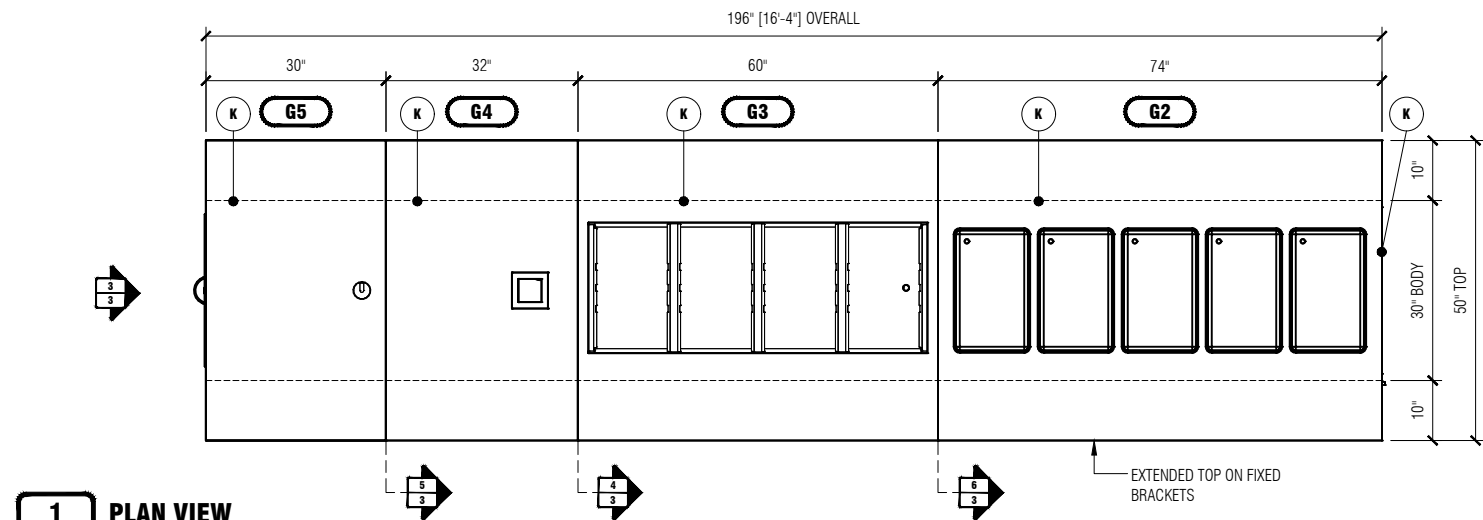
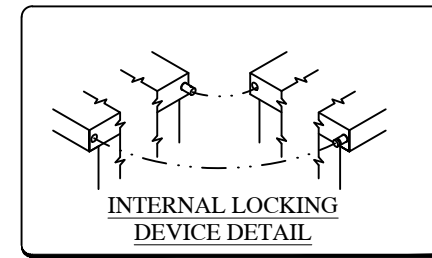
NSF STANDARD #7 COLD PAN UNITS TO HOLD FOOD PANS RECESSED 3" BELOW TOP ON REMOVABLE STAINLESS STEEL BRACKETS AND ADAPTER BARS

DRAIN TURNED 90° AT DARIN VALVE.

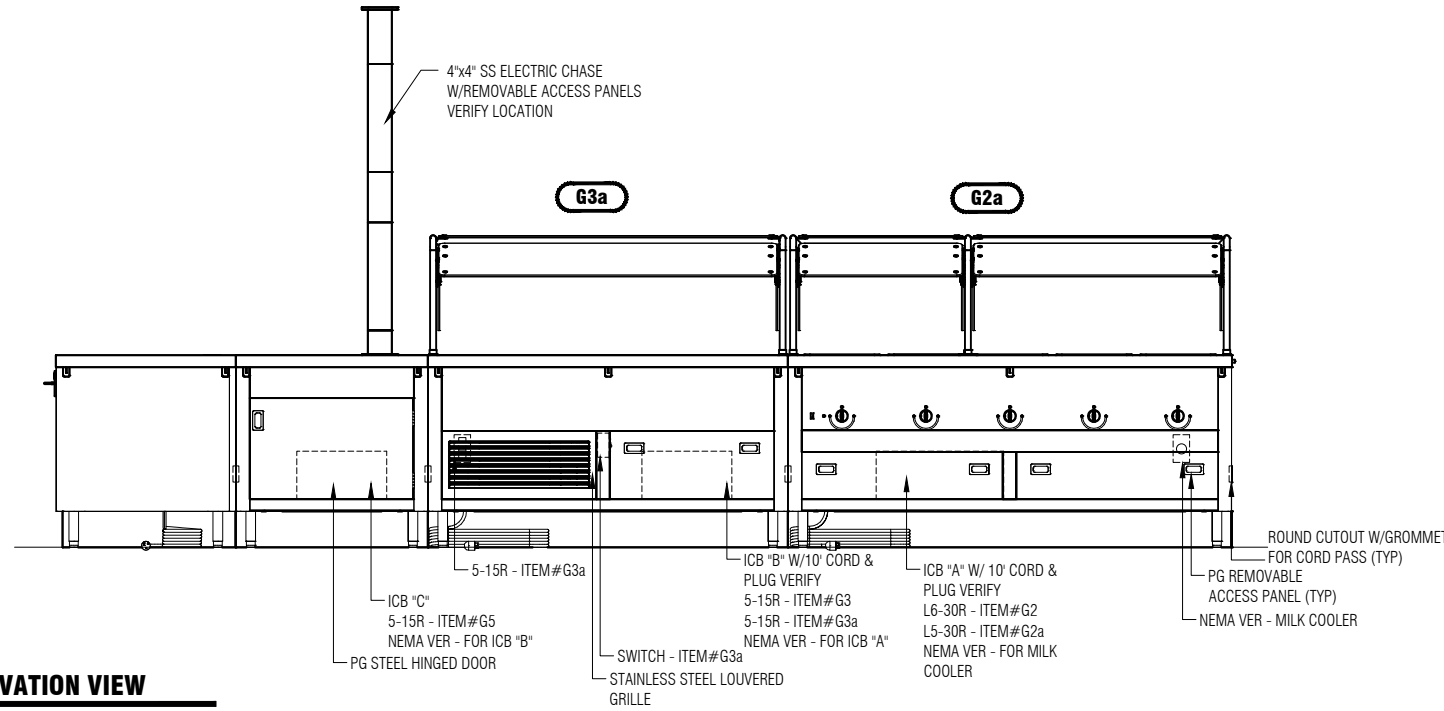
**BREATHGUARDS (TS400 Series)**

1" DIA. STAINLESS STEEL TUBING LEGS. CLEAR GLASS SHELVES, PROTECTORS & END ENCLOSURES.

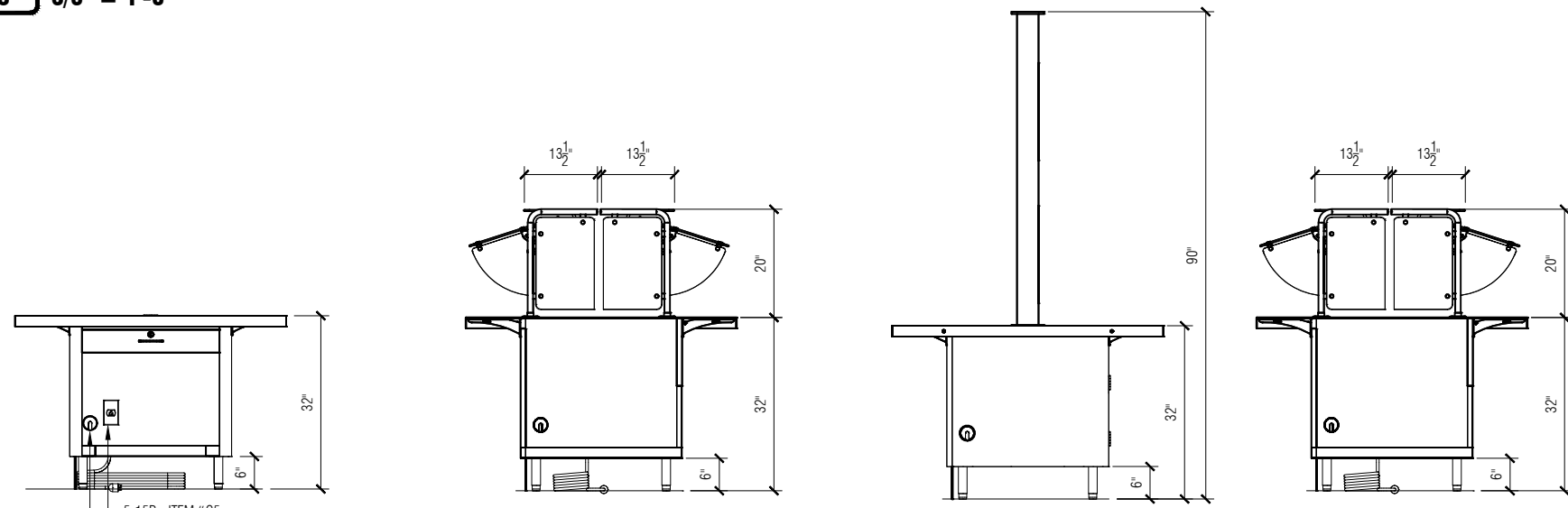
**\*\*BREATH GUARD POSTS ARE NOT TO BE USED AS PUSH HANDLES. DUKE MANUFACTURING DOES NOT ACCEPT RESPONSIBILITY FOR FOOD SHIELDS COMING LOOSE IN THE FIELD DUE TO MISUSE.\*\***



**1 PLAN VIEW**  
**3 3/8" = 1'-0"**



**2 ELEVATION VIEW**  
**3 3/8" = 1'-0"**



**3 END VIEW**  
**3 3/8" = 1'-0"**

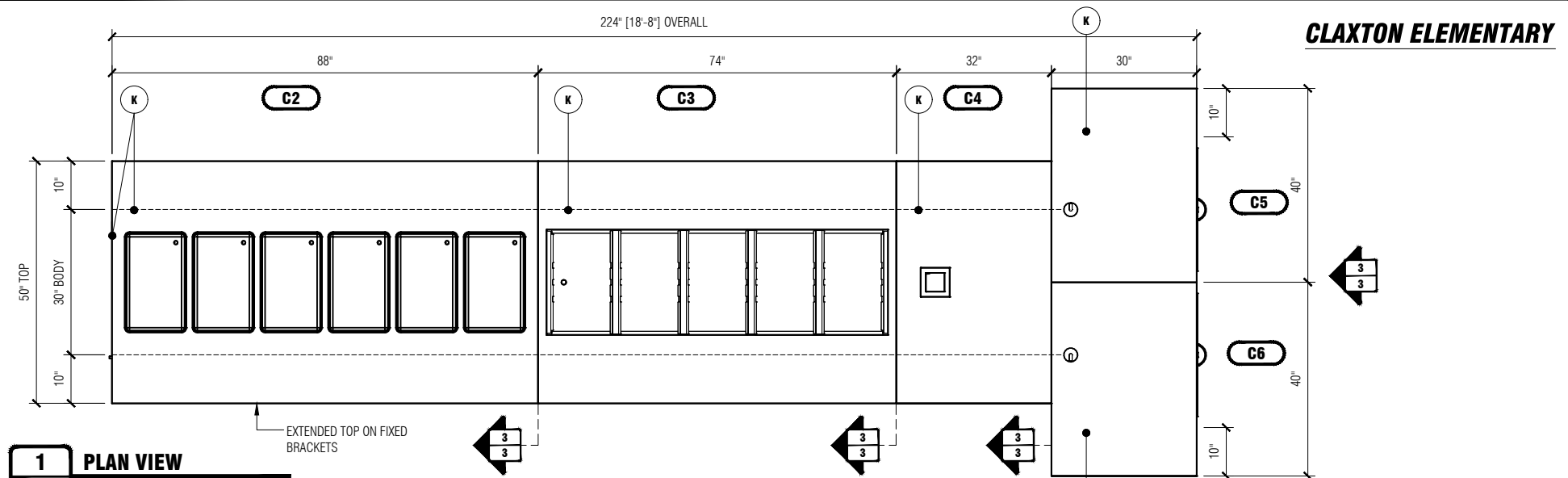
**4 END VIEW**  
**3 3/8" = 1'-0"**

**5 END VIEW**  
**3 3/8" = 1'-0"**

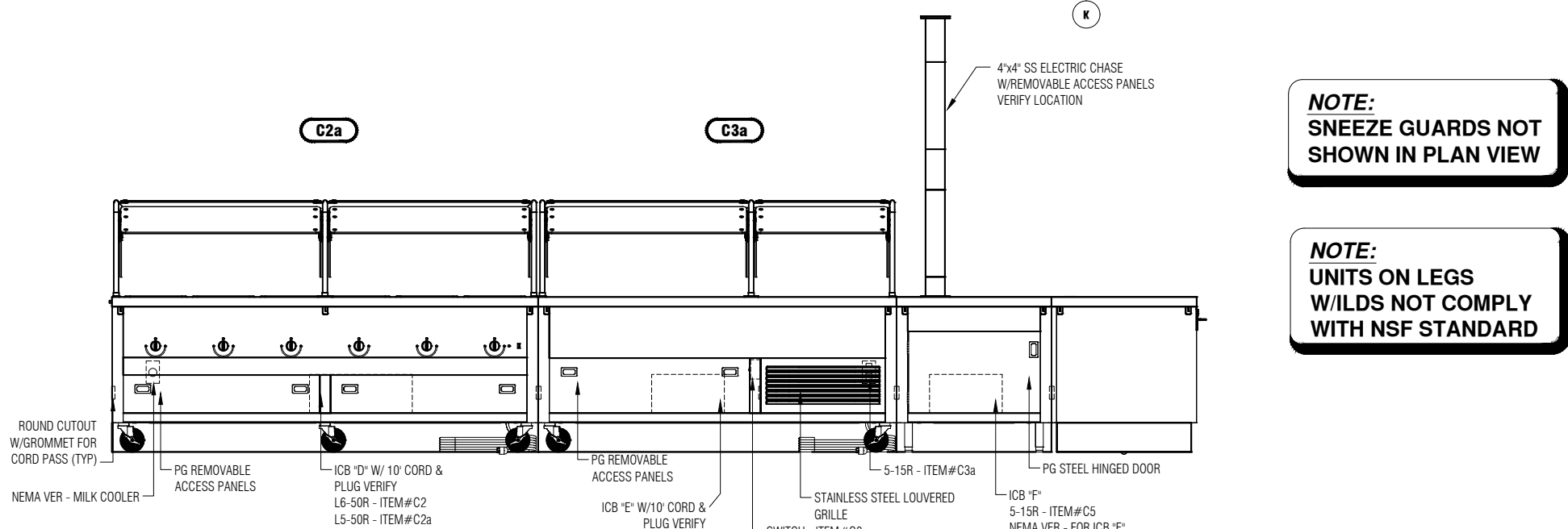
**6 END VIEW**  
**3 3/8" = 1'-0"**

**DUKE EQUIPMENT**

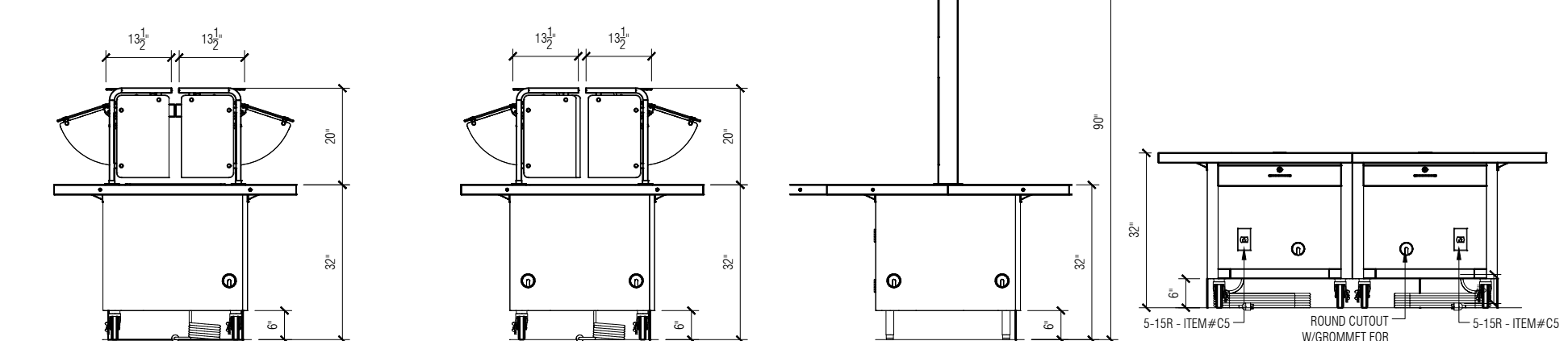
Item Tag	Quantity	Model Number	Description	Voltage	Phase	Watts	Amps			
G2	1	TEHF-74PG	HOT FOOD UNIT SEALED WELLS W/ DRAINS	208	3	4500	12.5	NEMA#	Cord	Gas Type
								L6-30	6'	-
G2a	2	TS-422-74	CONTEMPORARY FOOD SHIELD SELF SERVICE STYLE W/ RADIANT HEATER & INCANDESCENT LIGHT	120	1	2280	19	NEMA#	Cord	Gas Type
								L5-30	6'	-
G3	1	TCM-60PG-N7	4-SECTION NSF-7 COLD PAN UNIT 8" MECHANICALLY COOLED	120	1	1188	9.9	NEMA#	Cord	Gas Type
								5-15P	10'	-
G3a	2	TS422-60	CONTEMPORARY FOOD SHIELD SELF SERVICE STYLE W/LED LIGHTS	120	1	60	.50	NEMA#	Cord	Gas Type
								5-15P	-	-
G4	1	TST-32PG	SOLID TOP UNIT	-	-	-	-	NEMA#	Cord	Gas Type
								-	-	-
G5	1	TCS-30PG	CASHIERS UNIT	120	1	1800	15	NEMA#	Cord	Gas Type
								5-15P	6'	-



**1 PLAN VIEW**  
4 3/8" = 1'-0"



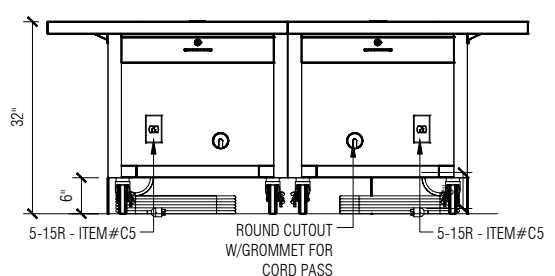
**2 ELEVATION VIEW**  
4 3/8" = 1'-0"



**3 END VIEW**  
4 3/8" = 1'-0"

**4 END VIEW**  
4 3/8" = 1'-0"

**5 END VIEW**  
4 3/8" = 1'-0"



**6 END VIEW**  
4 3/8" = 1'-0"

**NOTE:**  
SNEEZE GUARDS NOT SHOWN IN PLAN VIEW

**NOTE:**  
UNITS ON LEGS W/ILDS NOT COMPLY WITH NSF STANDARD

**CLAXTON ELEMENTARY**

**GENERAL NOTES**

THIS DRAWING AND THE INFORMATION AND DATE CONTAINED HEREIN ARE THE CONFIDENTIAL AND PROPRIETARY PROPERTY OF DUKE MANUFACTURING CO., AND MAY NOT BE REPRODUCED OR DISCLOSED FOR ANY PURPOSE, WITHOUT THE WRITTEN PERMISSION OF DUKE MANUFACTURING CO.

**THE FOLLOWING MUST BE VERIFIED PRIOR TO CONSTRUCTION**

- ANY DECOR COLOR CHOICES INCLUDING LAMINATE, PAINT COLOR, OR CUSTOM DECOR FEATURES, IF APPLICABLE
- ALL ELECTRICAL VOLTAGE AND PHASE OF DUKE HOT FOOD UNITS AND BUYOUT EQUIPMENT IF APPLICABLE
- ALL CRITICAL FIELD DIMENSION IF ANY AS INDICATED IN PLAN VIEW.

**THURMA DUKE SERVING SYSTEMS**

**TOPS**  
14 GA. STAINLESS STEEL TOPS.  
**BODIES & INTERIORS**  
14 GA. PAINT GRIP STEEL FRAME/SUPPORTS W/20 GA. PAINT GRIP STEEL ENCLOSURE CHANNELS. BODY PANELS AND INTERIOR SHELVES W/ POWDER COAT FINISH.

\*POWDER COAT COLOR:..... #217120 - SKY BLUE

**LEGS**  
6" HIGH, 1 5/8" Ø STAINLESS STEEL TUBULAR LEGS WITH ADJUSTABLE FEET.

**CASTERS**  
5" Ø CASTERS WITH GRAY POLYURETHANE TIRES. ALL SWIVEL WITH BRAKES.

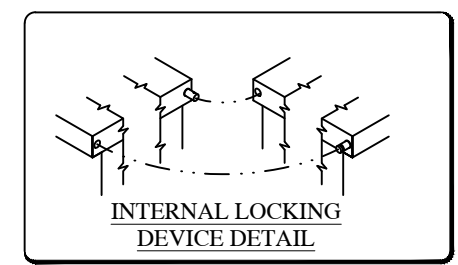
**KICKPLATES**  
HEAVY GAUGE STAINLESS STEEL KICK PLATES LOCATED WHERE INDICATED BY SCHEDULE.

**HOT FOOD DRAINS**  
DRAINS MANIFOLDED W/ COPPER TUBING TO BRASS MASTER VALVE. EXTEND MASTER VALVE FORWARD. TO INCLUDE HOSE BIB CONNECTION & 48" OF 1/2" DIA. HOSE.  
DRAIN TURNED 90° AT DARIN VALVE.

**NSF-7 COLD PAN UNITS**  
NSF STANDARD #7 COLD PAN UNITS TO HOLD FOOD PANS RECESSED 3" BELOW TOP ON REMOVABLE STAINLESS STEEL BRACKETS AND ADAPTER BARS  
DRAIN TURNED 90° AT DARIN VALVE.

**BREATHGUARDS (TS400 Series)**  
1" DIA. STAINLESS STEEL TUBING LEGS. CLEAR GLASS SHELVES, PROTECTORS & END ENCLOSURES.

**\*\*BREATH GUARD POSTS ARE NOT TO BE USED AS PUSH HANDLES. DUKE MANUFACTURING DOES NOT ACCEPT RESPONSIBILITY FOR FOOD SHIELDS COMING LOOSE IN THE FIELD DUE TO MISUSE.\*\***



**DUKE EQUIPMENT**

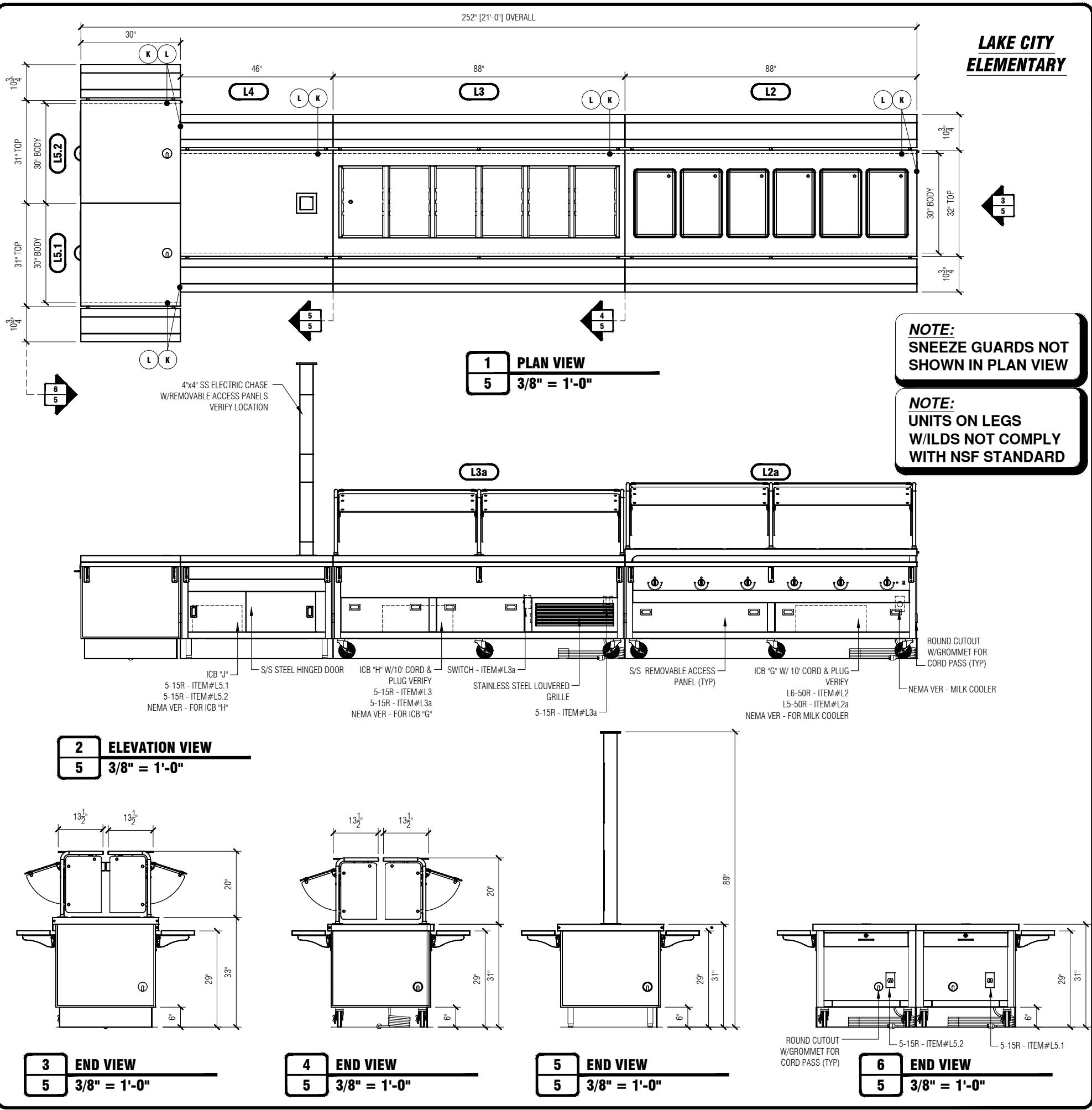
Item Tag	Quantity	Model Number	Description	Voltage	Phase	Wells	Ampts			
C2	1	TEHF-88PG	HOT FOOD UNIT SEALED WELLS W/ DRAINS	208	3	5400	15.0	NEMA#	Cord	Gas Type
C2a	2	TS-422-88	CONTEMPORARY FOOD SHIELD SELF SERVICE STYLE W/ RADIANT HEATER & INCANDESCENT LIGHT	120	1	3020	25.2	NEMA#	Cord	Gas Type
C3	1	TCM-74PG-N7	5-SECTION NSF-7 COLD PAN UNIT 8" MECHANICALLY COOLED	120	1	1188	9.9	NEMA#	Cord	Gas Type
C3a	2	TS422-74	CONTEMPORARY FOOD SHIELD SELF SERVICE STYLE W/LED LIGHTS	120	1	60	0.5	NEMA#	Cord	Gas Type
C4	1	TST-32PG	SOLID TOP UNIT	-	-	-	-	NEMA#	Cord	Gas Type
C5	1	TCS-30PG	CASHIERS UNIT	120	1	1800	15	NEMA#	Cord	Gas Type
C6	1	TCS-30PG	CASHIERS UNIT	120	1	1800	15	NEMA#	Cord	Gas Type

**Duke**  
Your Solutions Partner  
©2017 Duke Manufacturing Co.  
**DUKE MANUFACTURING COMPANY**  
2305 North Broadway  
St. Louis, MO 63102  
Ph (314) 231-1130  
Fax (314) 231-5074

**APPROVED FOR FABRICATION:** [Signature]  
**REVISED AND REBUILT FOR APPROVAL:** [Signature]  
**DATE:** [Date]  
**DESIGNED BY:** PMR

**DESIGNED FOR:** ANDERSON COUNTY SCHOOLS

**DRAWN BY:** PD  
**ESTIMATOR:** R. TROUTT  
**PURCHASE ORDER #:** N/A  
**SALES ORDER #:** N/A  
**DATE:** 03/25/2020  
**DRAWING NO.:** SD-133771  
**SHEET:** 4  
**OF:** 5



### GENERAL NOTES

THIS DRAWING AND THE INFORMATION AND DATE CONTAINED HEREIN ARE THE CONFIDENTIAL AND PROPRIETARY PROPERTY OF DUKE MANUFACTURING CO., AND MAY NOT BE REPRODUCED OR DISCLOSED FOR ANY PURPOSE, WITHOUT THE WRITTEN PERMISSION OF DUKE MANUFACTURING CO.

**THE FOLLOWING MUST BE VERIFIED PRIOR TO CONSTRUCTION**

- ANY DECOR COLOR CHOICES INCLUDING LAMINATE, PAINT COLOR, OR CUSTOM DECOR FEATURES, IF APPLICABLE
- ALL ELECTRICAL VOLTAGE AND PHASE OF DUKE HOT FOOD UNITS AND BUYOUT EQUIPMENT IF APPLICABLE
- ALL CRITICAL FIELD DIMENSION IF ANY AS INDICATED IN PLAN VIEW.

### THURMA DUKE SERVING SYSTEMS

**TOPS**  
14 GA. STAINLESS STEEL TOPS.

**BODIES & INTERIORS**  
14 GA. FRAME/SUPPORTS W/20 GA. STAINLESS STEEL ENCLOSURE CHANNELS, BODY PANELS AND INTERIOR SHELVES W/ LAMINATE VENEER EXTERIOR WHERE INDICATED.

\*LAMINATE BRAND:..... VERIFY  
\*LAMINATE ID NUMBER:..... VERIFY  
\*LAMINATE COLOR NAME:..... VERIFY

**LEGS**  
6" HIGH, 1 5/8" Ø STAINLESS STEEL TUBULAR LEGS WITH ADJUSTABLE FEET.

**CASTERS**  
5" Ø CASTERS WITH GRAY POLYURETHANE TIRES. ALL SWIVEL WITH BRAKES.

**TRAYSLIDES**  
16 GA. STAINLESS STEEL SOLID TRAY SLIDES WITH (2) DIE FORMED RUBBING TRACKS ON 10 GA. STAINLESS STEEL FIXED BRACKETS.

**KICKPLATES**  
HEAVY GAUGE STAINLESS STEEL KICK PLATES LOCATED WHERE INDICATED BY SCHEDULE.

**HOT FOOD DRAINS**  
DRAINS MANIFOLDED W/ COPPER TUBING TO BRASS MASTER VALVE. EXTEND MASTER VALVE FORWARD. TO INCLUDE HOSE BIB CONNECTION & 48" OF 1/2" DIA. HOSE.  
DRAIN TURNED 90° AT DARIN VALVE.

**NSF-7 COLD PAN UNITS**  
NSF STANDARD #7 COLD PAN UNITS TO HOLD FOOD PANS RECESSED 3" BELOW TOP ON REMOVABLE STAINLESS STEEL BRACKETS AND ADAPTER BARS  
DRAIN TURNED 90° AT DARIN VALVE.

**BREATHGUARDS (TS400 Series)**  
1" DIA. STAINLESS STEEL TUBING LEGS. CLEAR GLASS SHELVES, PROTECTORS & END ENCLOSURES.

**\*\*BREATH GUARD POSTS ARE NOT TO BE USED AS PUSH HANDLES. DUKE MANUFACTURING DOES NOT ACCEPT RESPONSIBILITY FOR FOOD SHIELDS COMING LOOSE IN THE FIELD DUE TO MISUSE.\*\***

**INTERNAL LOCKING DEVICE DETAIL**

### DUKE EQUIPMENT

Item Tag	Quantity	Model Number	Description	Voltage	Phase	Watts	Amps			
L2	1	TEHF-88SS	HOT FOOD UNIT SEALED WELLS W/ DRAINS	208	1	5400	15.0	NEMA#	Cord	Gas Type
L2a	2	TS-422-88	CONTEMPORARY FOOD SHIELD SELF SERVICE STYLE W/ RADIANT HEATER & INCANDESCENT LIGHT	120	1	3020	25.2	NEMA#	Cord	Gas Type
L3	1	TCM-88SS-N7	6-SECTION NSF-7 COLD PAN UNIT 8" MECHANICALLY COOLED	120	1	1008	8.4	NEMA#	Cord	Gas Type
L3a	2	TS422-88	CONTEMPORARY FOOD SHIELD SELF SERVICE STYLE W/LED LIGHTS	120	1	30	0.5	NEMA#	Cord	Gas Type
L4	1	TST-46SS	SOLID TOP UNIT	-	-	-	-	NEMA#	Cord	Gas Type
L5.1	1	TCS-30SS	CASHIERS UNIT	120	1	1800	15	NEMA#	Cord	Gas Type
L5	1	TCS-30SS	CASHIERS UNIT	120	1	1800	15	NEMA#	Cord	Gas Type

Your Solutions Partner  
©2017 Duke Manufacturing Co.  
**DUKE MANUFACTURING COMPANY**  
2305 North Broadway  
St. Louis, MO 63102  
Ph (314) 231-1130  
Fax (314) 231-5074

SUBMITTAL

APPROVED FOR FABRICATION: \_\_\_\_\_  
REVISED AND RESUBMITTED FOR APPROVAL: \_\_\_\_\_  
DATE: \_\_\_\_\_

REV.	DATE	BY
A	4/13/2020	MPB
B	4/16/2020	MPB
C	4/28/2020	MPB

DESIGNED FOR: **ANDERSON COUNTY SCHOOLS**

DESIGNED BY: **PMR**

DRAWN BY: **PD**

ESTIMATOR: **R. TROUTT**

PURCHASE ORDER #: **N/A**

SALES ORDER: **N/A**

DATE: **03/25/2020**

DRAWING NO.: **SD-133771**

SHEET: **5**

OF: **5**