



**East Bay Park Improvements
Bobby Alford Pavilion
Project #1232 – CDBG #CV1-019
Request for Bid (RFB)
Date: February 24, 2023**

ADDENDUM II

I. **GENERAL:** N/A

II. **PROJECT MANUAL**

1. **Section 001100-Insurance Requirements:**

Builders risk insurance is required for the project.

III. **DRAWINGS**

1. **Sheet E-201 - Electrical Plan - Lighting** - See clouded revisions per Attachment A to Addendum 02. Revisions include:

- a. Light Fixture Schedule: Change Type 'A' strip light fixture from pendant-mounted to surface-mounted to underside of roof purlins, and revision to catalogue #.
- b. Lighting Plan: Revise orientation of Type 'A' fixtures from perpendicular to roof purlins to parallel with purlins.

IV. **BIDDERS QUESTIONS**

1. We would like to offer a substitute lighting package for the above-referenced project.

Answer: Light Fixture Schedule on sheet E-201 indicates that "Alternate manufacturers are acceptable upon written approval by Engineer. Products shall be equivalent to or better than design basis indicated in this schedule".

2. As per the drawings, PEMB is required. May I know who the Pre-Manufactured Engineered building (PEMB) manufacturer used for this project in the first place?

Answer: The City has no record of this information. The existing building construction dates back to the 1950s.

22 February 2023

3. The alternate #1 should also be added in the base bid? If so, the same number should be shown in alternate form with subtraction.

Answer: Alternate #1 is an add alternate and the amount of this alternate should not be included in the base bid. The Base bid is without construction of fireplace.

4. All subcontractors who we are planning to use, also need to be registered with the federal system for Award Management (SAM)? Or is Contractor/ GC' s registration enough?

Answer: According to CDBG grant requirements, the general contractor and subcontractors must be registered with SAM.

END OF ADDENDUM

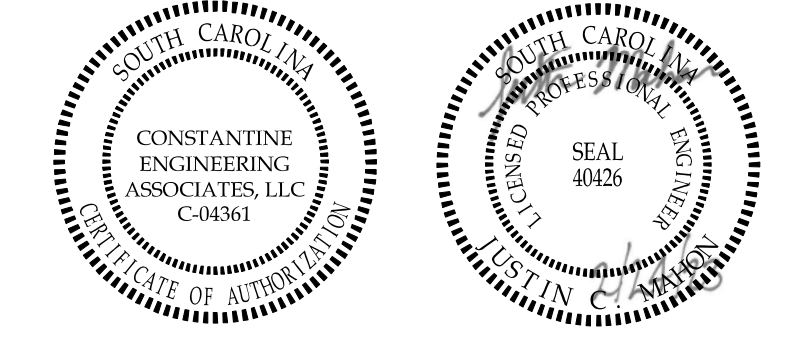
LIGHT FIXTURE SCHEDULE

FINAL LIGHT SELECTIONS BY OWNER/ARCHITECT. COORDINATE PRIOR TO PURCHASE. FIXTURES SHOWN ARE USED FOR DESIGN PURPOSES AND PERFORMANCE ONLY. ALTERNATE MANUFACTURERS ARE ACCEPTABLE UPON WRITTEN APPROVAL BY ENGINEER. PRODUCTS SHALL BE EQUIVALENT TO OR BETTER THAN DESIGN BASIS INDICATED IN THIS SCHEDULE.

LABEL	DESCRIPTION	CAT. #	VOLTAGE	LUMENS	CCT	WATTS	NOTES
A	8' LED STRIP LIGHT, SURFACE MOUNTED WITH 2x 48" WIRE GUARDS	LITHONIA TZL1N196-SMR-10000LM-FST-MVOLT-30K-90CR-WGZ48	UNV	9036	3000 K	68 W	FOR FIXTURES NOTED "EM", PROVIDE BATTERY BACKUP OPTION "ETW"
B	WALL MOUNT VAPOR BAR LIGHT WITH ONE (1) MEDIUM BULB BASE AND WIRE GUARD CAGE, DARK GREEN FINISH, FROSTED GLASS	BASELITE W2CL2G	120V		3000 K	15 W	PROVIDE ONE (1) 15W MAXIMUM LED BULB WITH FIXTURE
C	11" Ø ROUND, FLUSH MOUNT, LOW PROFILE LED LIGHT FIXTURE	LITHONIA FMLRL-11-14830	120V	1104	3000 K	16 W	
D	INTERIOR, WALL-MOUNTED LED EMERGENCY LIGHT WITH 90 MIN BATTERY BACKUP	LITHONIA EU2C-M6	UNV	-	0 K	3 W	CONNECT TO LOCAL LIGHTING CIRCUIT AHEAD OF CONTROLS
X	SURFACE MOUNT, WHITE, WET LOCATION LED EXIT SIGN WITH RED LETTERS AND A 90-MINUTE BATTERY BACKUP	LITHONIA WLTE-W-1-R-EL-SD	UNV	-	0 K	0 W	CONNECT TO LOCAL LIGHTING CIRCUIT AHEAD OF CONTROLS

ELECTRICAL DRAWING NOTES

- 1 PROVIDE BID ALTERNATE (ALTERNATE #2) FOR ONE (1) OVER-HEAD CIRCULATION FAN WITH INDIVIDUAL SWITCHED CONTROL (VARIABLE SPEED). DESIGN BASIS: "BIG ASS FANS" MODEL "BASIC F", 14-FT DIAMETER, 240/1PH/25A. MOUNT TO ROOF STRUCTURE.
- 2 MOUNT FIXTURE AT 96" AFG, AS MEASURED TO CENTER OF MOUNTING CANOPY.
- 3 PROVIDE SEPARATELY ORDERED 30W EMERGENCY BALLAST WITH FIXTURE.



SEALS

© COPYRIGHT 2022 ROSENBLUM COE ARCHITECTS, INC.
 THIS DRAWING HAS BEEN PREPARED BY ROSENBLUM COE ARCHITECTS, INC. FOR THE PROJECT AND IS AN INSTRUMENT OF PROFESSIONAL SERVICE FOR THE USE SOLELY WITH RESPECT TO THIS PROJECT. THE ARCHITECT SHALL BE DEEMED THE AUTHOR OF THIS DOCUMENT AND SHALL RETAIN ALL COMMON LAW, STATUTORY AND OTHER RESERVED RIGHTS, INCLUDING THE COPYRIGHT.

NOTES:

ATTACHMENT A
TO ADDENDUM 02

02/23/23	2	ADDENDUM 02
REVISIONS		

FOR CONSTRUCTION BID

GEORGETOWN BOBBY ALFORD PAVILION RENOVATION

310 Greenwich Drive
Georgetown, SC 29442

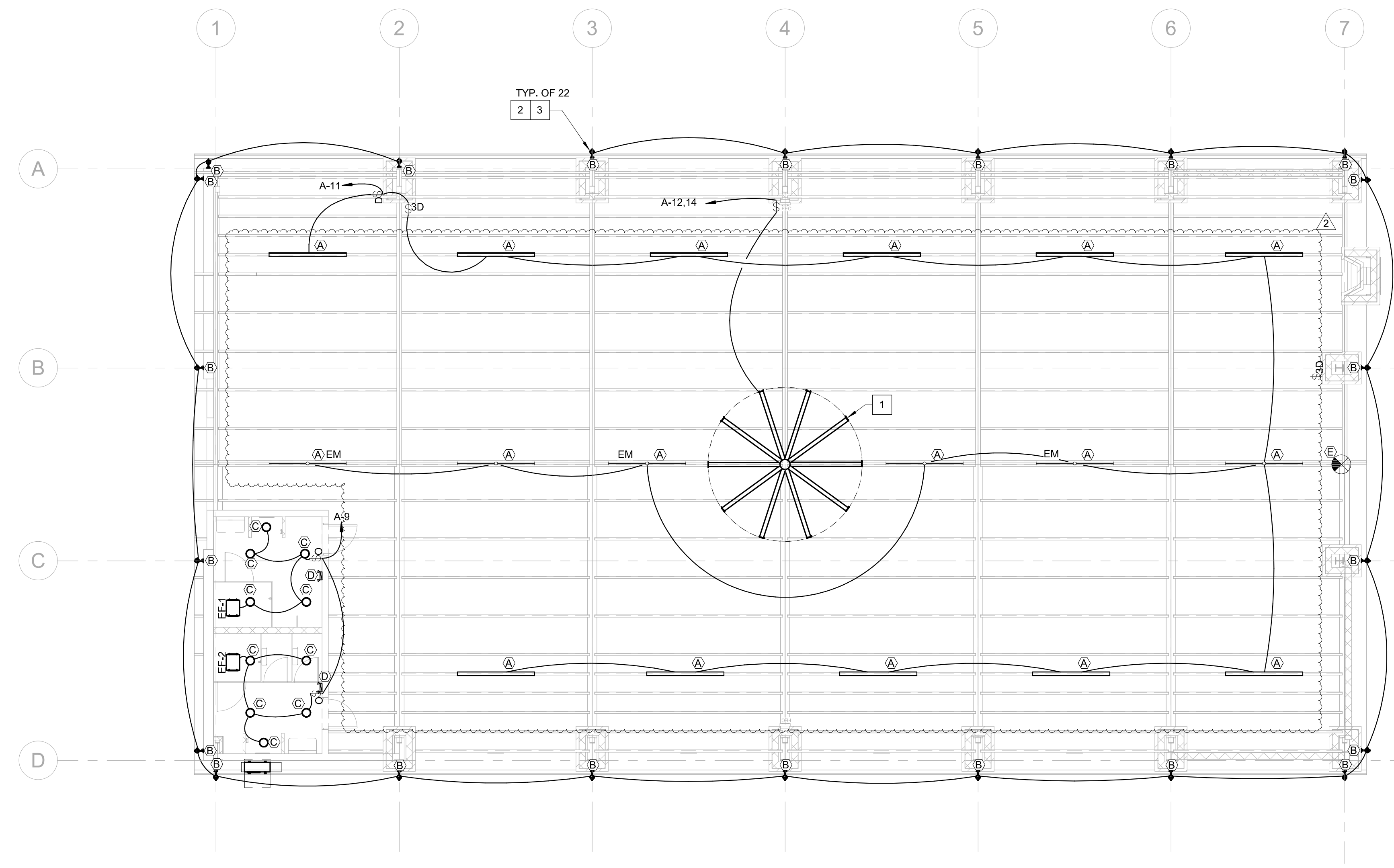
ROSENBLUM COE ARCHITECTS, INC.

1643 MEANS STREET
CHARLESTON, SC 29412
843.577.6073

ELECTRICAL PLAN - LIGHTING

SHEET NAME		
PROJECT NUMBER	20-032	
DRAWN BY	JZK	
CHECKED BY	JCM	
DATE	12/15/2022	
SCALE	1/8" = 1'-0"	

E-201



1 LIGHT-1ST FLR
1/8" = 1'-0"