



ADDENDUM NO. 1

Date: 11 November 2020

Project No.: 20-12

Project Name: LaFayette Square Lighting Enhancements

The Bidding Documents are modified as follows:

PART 1.00 DRAWINGS

1.01 SHEET ADD1-1A, ADD1-2A, ADD1-3A

- A. Sheet E-04 and additional details.

PART 2.00 PROJECT MANUAL

NO ITEMS INCLUDED

PART 3.00 ADDENDA

NO ITEMS INCLUDED

PART 4.00 APPROVED MANUFACTURERS

NO ITEMS INCLUDED

PART 5.00 ATTACHMENTS

5.01 DRAWINGS

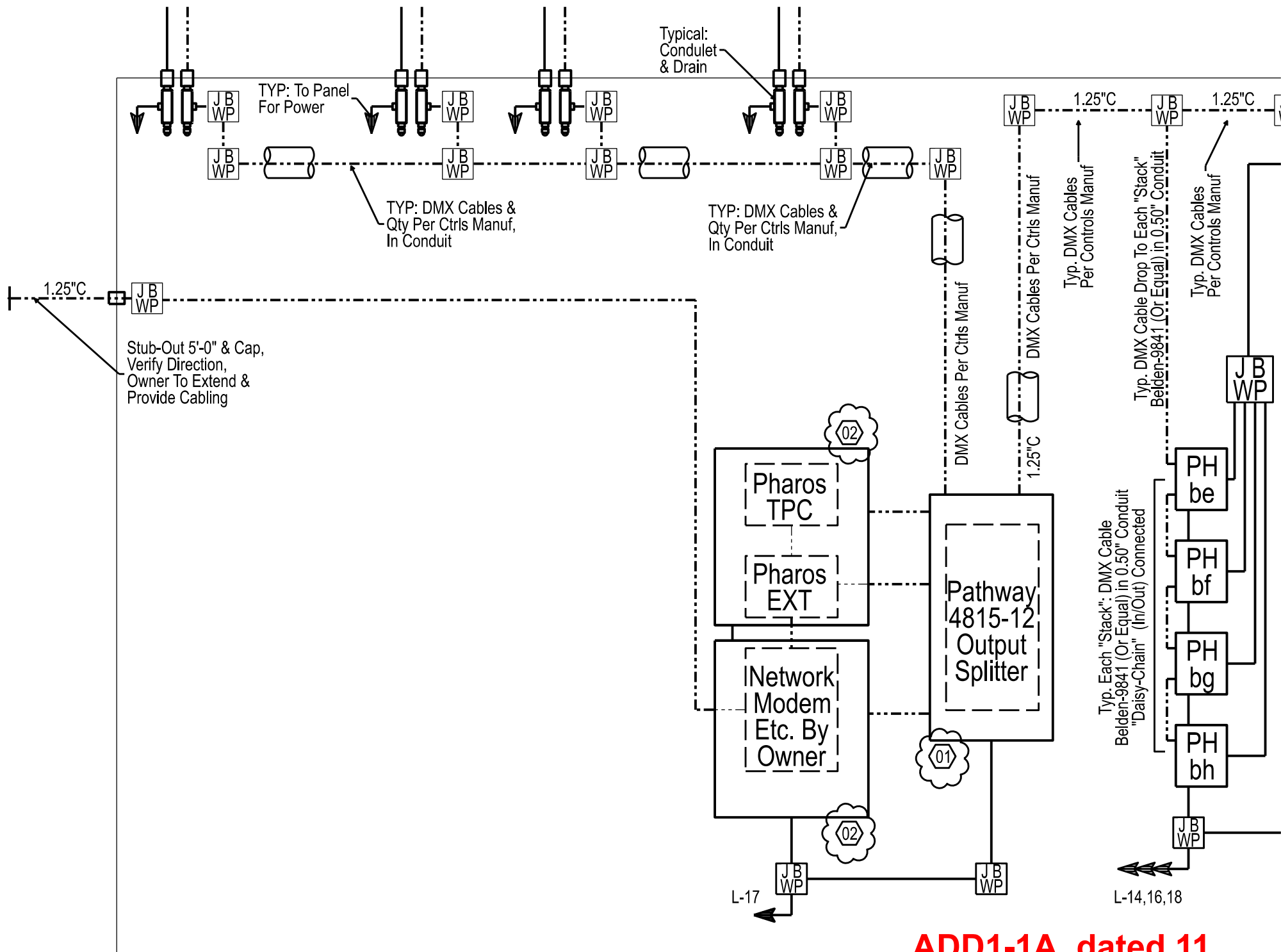
- A. Sheet ADD1-1A dated 11 November 2020
- B. Sheet ADD1-2A dated 11 November 2020
- C. Sheet ADD1-3A dated 11 November 2020, Sheet E-04

PART 6.00 GENERAL CLARIFICATIONS

6.01 Bid Requirements

- A. Electrical subcontractors may bid directly to the City of LaGrange as long as they have a General Contractor's license for the State of Georgia.

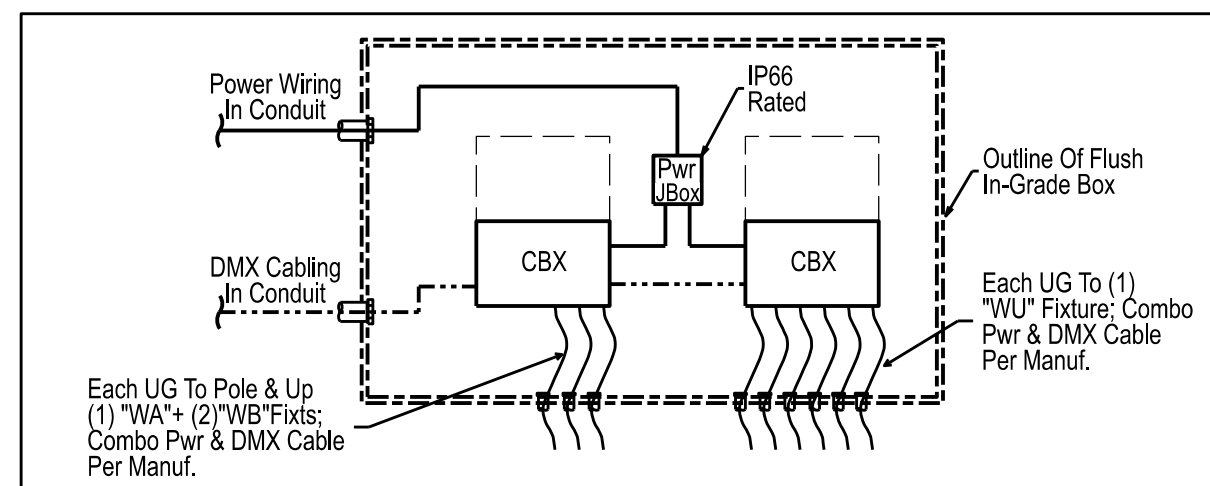
END OF ADDENDUM NO. 1



LEGEND NOTES			
20.10.01	LaGrange Lafayette Square		
#	Rv	LEGEND NOTES E-04	CO
01	~	ENCLOSURE, NEMA 4X FIBERGLASS +VIEW WINDOW: Provide UL-508A, NEMA-4X Fiberglass Enclosure; Pad-Lockable Hinged Door With View Window, Stainless-Steel Hardware & Mounting Brackets; Gray UV Protective Finish; Vent-Drain; Full Equipment Mtg. Backboard. nVent-Hoffman ULTRX Series Or Equal. Min Size(In): 39H, 31W, 12 Deep (Verify Final Size With Actual Final Equipment Prior To Ordering)	~
02	~	ENCLOSURE, NEMA 4X FIBERGLASS +VIEW WINDOW: Provide UL-508A, NEMA-4X Fiberglass Enclosure; Pad-Lockable Hinged Door With View Window, Stainless-Steel Hardware & Mounting Brackets; Gray UV Protective Finish; Vent-Drain; Full Equipment Mtg. Backboard. nVent-Hoffman ULTRX Series Or Equal. Min Size(In): 23H, 23W, 12Deep (Verify Final Size With Actual Final Equipment Prior To Ordering)	~
19-1??	-	End Of Legend Notes	--

- NOTE -
See Ltg Fixture-Driver-DMX Control
Matrix For Additional Information

**ADD1-2A, dated 11
November 2020**



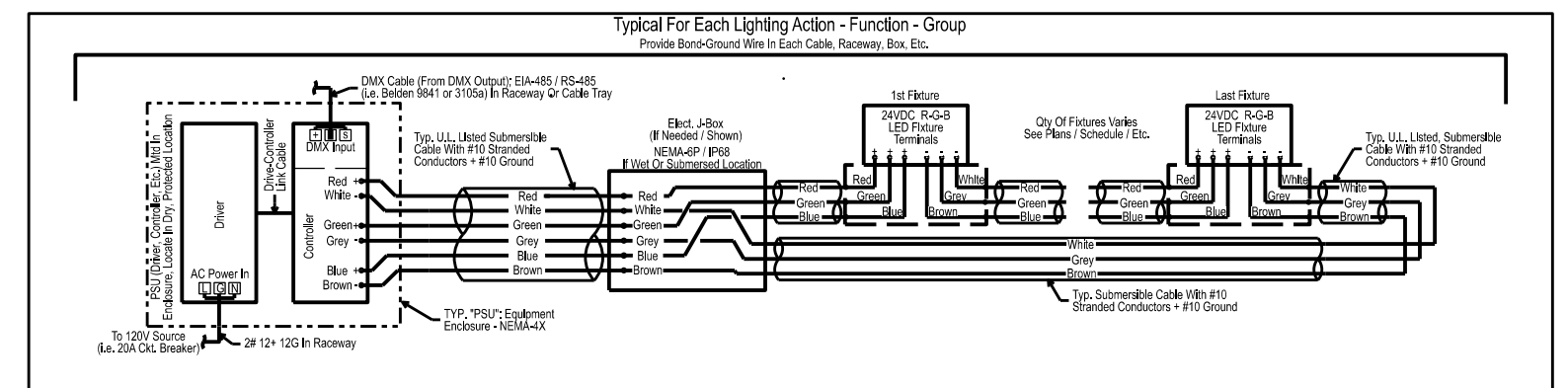
- IN-GRADE BOX SPECIFICS -
 Box Type: Heavy-Duty Polymer Concrete Box; UL Listed Load Rating: TIER-15 (15,000# Design, 22,500# Tested) Tamper-Resistant Bolt-Down Labeled Lid (SS Hardware) Hubbell Quartzite FRP Special Or Equivalent.
 Box Size (Nom.): 48-In Long, 30-In Wide, 18-In Deep

- GENERAL COMMENTS & NOTES -

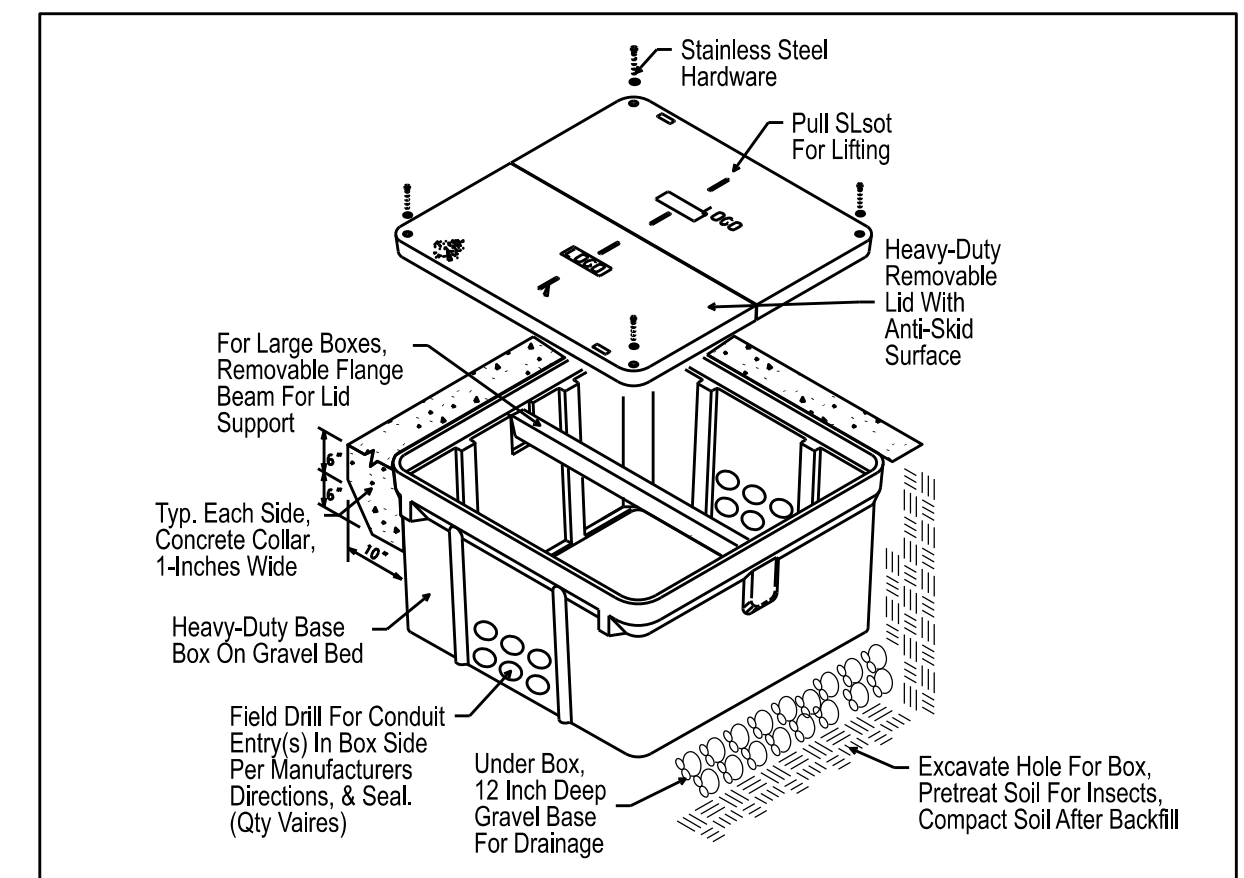
- 1- This Detail Is Diagrammatic, Adjustments For Field Conditions, Component Sizes, Layouts May Be Made To Encure Proper Access, Functionality & Service Ability, Etc..
- 2- Box Top Label> Label Per Use, Verify With Architect & Owner; Provide Safety & Warning Labels Inside Box.
- 3- Wiring> Use Water-Tight Boxes & Wiring Connectors (IP66); Support & Secure Cables & Wires. Seal Conduits To Keep Out Dirt, Insect, Etc. WP-Tag Wiring With Panel & Circuit Numbers
- 4- Submittals> Contractor To Submit To-Scale Drawings Of The Complete Assembly With All Components Shown.

"WA" & "WU" IN-GRADE WIRING DETAIL

MG Detail #: Not To Scale



24VDC LED RGB Lighting - Controller - Driver - DMX Wiring
 MG Detail #: Not To Scale



- IN-GRADE BOX SPECIFICS -
 Box Type: Heavy-Duty Polymer Concrete Box; UL Listed Load Rating: TIER-15 (15,000# Design, 22,500# Tested) Tamper-Resistant Bolt-Down Labeled Lid (SS Hardware) Hubbell Quartzite FRP Special Or Equivalent.
 Box Size (Nom.): See Specific Box Requirements

- GENERAL COMMENTS & NOTES -

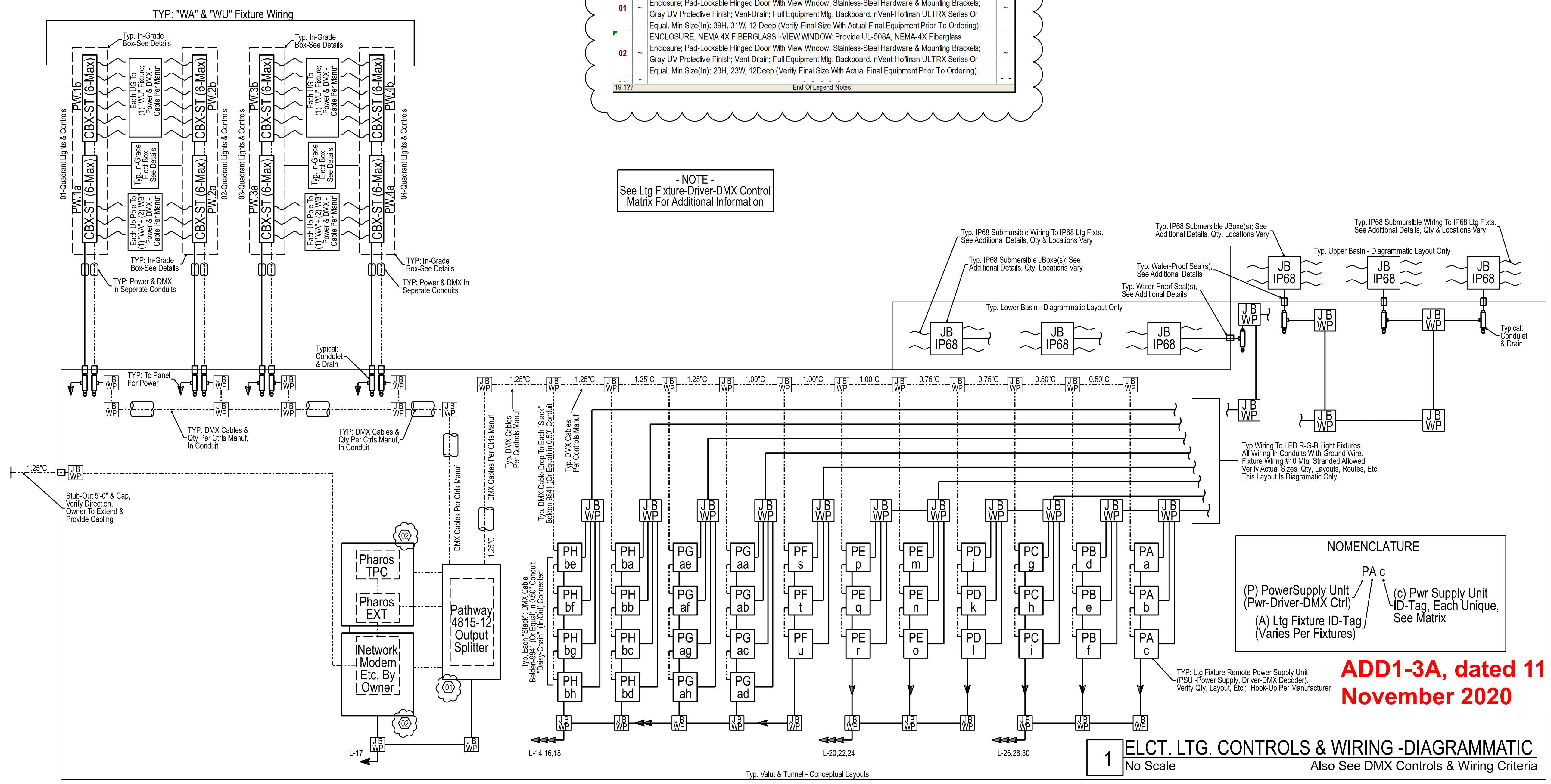
- 1- This Detail Is Diagrammatic, Adjustments For Field Conditions, Component Sizes, Layouts May Be Made To Encure Proper Access, Functionality & Service Ability, Etc..
- 2- Box Top Label> Label Per Use, Verify With Architect & Owner; Provide Safety & Warning Labels Inside Box.
- 3- Wiring> Use Water-Tight Boxes & Wiring Connectors (IP66); Support & Secure Cables & Wires. Seal Conduits To Keep Out Dirt, Insect, Etc. WP-Tag Wiring With Panel & Circuit Numbers
- 4- Submittals> Contractor To Submit To-Scale Drawings Of The Complete Assembly With All Components Shown.

TYP. IN-GRADE BOX DETAIL

MG Detail #: Not To Scale

LEGEND NOTES			
#	Rv	Description	CO
01	~	ENCLOSURE, NEMA 4X FIBERGLASS +VIEW WINDOW: Provide UL-508A, NEMA-4X Fiberglass Enclosure; Pad-Lockable Hinged Door With View Window, Stainless-Steel Hardware & Mounting Brackets; Gray UV Protective Finish; Vent-Drain; Full Equipment Mtg. Backboard. nVent-Hoffman ULTRX Series Or Equal. Min Size (In): 39H, 31W, 12 Deep (Verify Final Size With Actual Final Equipment Prior To Ordering)	~
02	~	ENCLOSURE, NEMA 4X FIBERGLASS +VIEW WINDOW: Provide UL-508A, NEMA-4X Fiberglass Enclosure; Pad-Lockable Hinged Door With View Window, Stainless-Steel Hardware & Mounting Brackets; Gray UV Protective Finish; Vent-Drain; Full Equipment Mtg. Backboard. nVent-Hoffman ULTRX Series Or Equal. Min Size (In): 23H, 23W, 12Deep (Verify Final Size With Actual Final Equipment Prior To Ordering)	~
End Of Legend Notes			

- NOTE -
 See Ltg Fixture-Driver-DMX Control Matrix For Additional Information

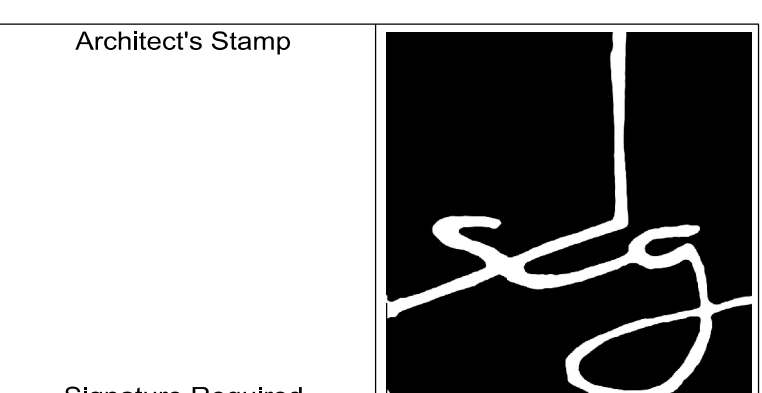


NOMENCLATURE

(P) PowerSupply Unit (Pwr-Driver-DMX Ctrl)	(c) Pwr Supply Unit ID-Tag, Each Unique, See Matrix
(A) Ltg Fixture ID-Tag (Varies Per Fixtures)	

ADD1-3A, dated 11 November 2020

1 ELCT. LTG. CONTROLS & WIRING -DIAGRAMMATIC
 No Scale
 Also See DMX Controls & Wiring Criteria



Signature Required
SMITH DESIGN GROUP, INC.
 206 WEST HARALSON ST
 LAGRANGE, GEORGIA 30240
 706-882-5511 www.SDGarch.net



9309 Seminole Road
 Jonesboro, Georgia 30236
 770-471-8076
 maddoxgroup@comcast.net
 TMG Job #: 20.127
 Copyright: -TMG- 2020

THE MADDOX GROUP, INC.
 DESIGN & ENGINEERING CONSULTANTS

Revisions		
#	Date	Description

Project Title:
LAFAYETTE SQUARE & FOUNTAIN LIGHTING ENHANCEMENTS
 Lafayette Square
 LAGRANGE, GEORGIA 30240

Sheet Title:
ELECTRICAL & CONTROLS WIRING & RELATED

Modified Date: na	SDG Job No: 20-12
Issued Date: 07 OCT. 2020	Sheet: E-04