



MATERIAL SUBSTITUTION REQUEST

Bid #22-018, Waverly Park

Date: 03/22/2022

We hereby submit for your review the following PRODUCT SUBSTITUTION of the specified material for the above listed project.

Section: _____

Paragraph: _____

Specified Material: LED Sports Lighting by Premier Sports Lighting, LLC

Attached is complete technical data of the PRODUCT SUBSTITUTION, highlighted or underlined for easy reading, including laboratory test, as necessary, in duplicate. Included is complete information on changes to the Project Manual Documents required by the proposed PRODUCT SUBSTITUTION for its proper installation.

A) The Trade Contractor, under whose transmittal this information is sent, has reviewed the PRODUCT SUBSTITUTION and agrees it is applicable to this project in the location described and agrees to warrant/guarantee the use of the PRODUCT SUBSTITUTION in the same manner he would the Specified Product.

Yes No

If not, explain: _____

B) Does the PRODUCT SUBSTITUTION affect the dimensions shown on the Drawings in ANY WAY?

Yes No

If so, how? _____

C) Does the undersigned have the approval of the Manufacturer/Supplier to pay for any changes to the building design, including engineering and detailing costs, caused by the requested PRODUCT SUBSTITUTION?

Yes No

If so, to what extent? _____

D) What effect does the PRODUCT SUBSTITUTION acceptance have on other trades?

None Don't Know As follows:

E) Difference between proposed PRODUCT SUBSTITUTION and the Specified Product? BE SPECIFIC IN DESCRIPTION. (ASTM No., Size, Gauge, Material, Color Availability, Construction)

(Attach additional pages as required)

F) Manufacturer's guarantees and warranties of the PRODUCT SUBSTITUTION and the Specified Product?

Same Different (Explain)

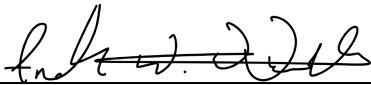
G) What is the cost differential of the PRODUCT SUBSTITUTION in comparison to the Specified Product?

Same Less Expensive by \$ _____ More Expensive by \$ _____

I) The PRODUCT SUBSTITUTION has been verified by the undersigned with the Manufacturer/Supplier as meeting or exceeding the specifications of the Specified item.

Yes No Waiting for answer.

THE UNDERSIGNED Trade Contractor states that the function, appearance, and quality of the PRODUCT SUBSTITUTION are equivalent or superior to the specified item. In addition, I, as the Trade Contractor will assume all responsibility for any impact or delay the review and evaluation of the alternate product may cause. Your approval of the Substitute Product in no way will relieve me as the Trade Contractor of my responsibilities to conform with all requirements of the Contract Documents.

Submitted By: 
Signature

Andrew Weathers
Printed


FOR USE BY ARCHITECT/ENGINEER: [must comply with all applicable sections of the contract documents](#)

RECEIVED TOO LATE NOT ACCEPTED APPROVED AS NOTED

FOR BIDDING ONLY, FINAL APPROVAL SUBJECT TO SUBMITTAL DATA IN ACCORDANCE WITH REQUIREMENTS OF CONTRACT DOCUMENTS.

DATE: 03/22/2022

PRINTED NAME: Mike Rolison

SIGNATURE: 



Play the Game in a Better Light™



Waverly Park

LED Sports Lighting

March 22, 2022

PROPOSAL SUBMITTED BY
PREMEIR SPORTS LIGHTING



Tab A

Letter/Checklist

Play the Game in a Better Light™



Mrs. Silver,

Thank you for this opportunity to provide you with an overview of our state-of-the-art LED sports lighting system. Most recently Mississippi State University utilized our Remote Pro™ and Control Pro+™ systems to enhance the fan experience and provide better broadcasting quality at their softball stadium. Clemson University has chosen our Remote Pro™ system for the upgrade of the lighting and control system at their soccer stadium, Historic Riggs Field, and it will be installed and operational by early May. Premier Sports Lighting® is not only a manufacturer but also a licensed unlimited electrical contractor in many states, including South Carolina.

Our approach to LED sports lighting is simple:

- Provide high-quality lighting at an affordable price by selling directly to the customer
- Provide fan-experience effects as a part of our standard system
- Provide remote access from any web-enabled device in the world
- Provide the lowest total cost of ownership in the industry
- Provide unmatched customer service to potential and paying customers

Project References utilizing our state-of-the-art LED and Control system(s):

• Mississippi State University	Starkville, MS	Softball Stadium
• Clemson University*	Clemson, SC	Soccer Stadium
• Georgia Highlands College*	Cartersville, GA	New Baseball and Softball Stadiums
• Rock Springs Academy*	Milner, GA	4 New Baseball Fields
• Pendleton High School	Pendleton, SC	Soccer Stadium
• Pendleton High School	Pendleton, SC	Football Stadium
• Christ School	Arden, NC	Baseball & Soccer Stadiums
• Greenwood Parks & Rec*	Greenwood, SC	4 New Baseball Fields
• Piedmont Community Charter*	Gastonia, NC	New Soccer Stadium
• City of Pickens	Pickens, SC	5 yr. contract to upgrade lighting

* = currently in manufacturing

For the retrofit of your stadium, our Remote Pro™ LED Lighting System, as installed, will have the following included:

- We will strip all existing lights, crossarms, cages, boxes, and wiring on existing poles.
- We will supply all new crossarms and lights at the top of the pole.
- We will supply a new wiring harness down the pole.
- At 10' above grade, we will supply our remote driver enclosure, which will include drivers, surge protection, fuse holder, fuses, spare fuses, control system, and a new disconnect switch.
- We will supply a wireless control system that will work through any web-enabled device. We can add or

delete users at any time as promised. This will allow for on/off, dimming, theatrical controls, scheduling, diagnostics, logs of usage, etc.

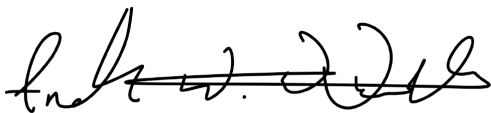
- We will include at our master control cabinet an industrial computer to control the system and connect to your local network via ethernet or will be connected to a cellular network provided by Premier Sports Lighting, LLC.
- Each field will get an auto, on, and off-key switch. The switch allows for manual control of the lighting system. The auto position allows for the computer to “control” the system remotely. The key switch additionally can turn lights on/off in the event the computer fails for a “failsafe” operation.

Premier’s 25-year parts, labor, maintenance, and performance warranty for all of your fields is the best in the industry. With our ability to log in and look at your system, we can often fix any issues remotely. There are almost never any issues with the lights at the top of the pole with current LED systems. Any warranty/maintenance issues will usually occur with the drivers or other items in the remote box. Premier is placing all of the system's “guts” at 10-foot above grade, which is step ladder height, so bucket trucks for repairs are almost obsolete.

The Remote Pro™ LED Lighting System is unique in that we utilize TIR lens technology and proprietary louvers to control our lights/beams. This creates greater lighting efficiency for the field of play plus it allows us to also control off-field lighting as well. For this project, we will also include the appropriate visors for your fields based on your site, which will be a big upgrade from what is currently there.

Thank you for your time and I hope we can work together on this project. Premier Sports Lighting would be ecstatic to have the City of Columbia, MS as a customer!

Sincerely,

A handwritten signature in black ink, appearing to read "Andrew Weathers". The signature is stylized and cursive.

Andrew Weathers

CEO

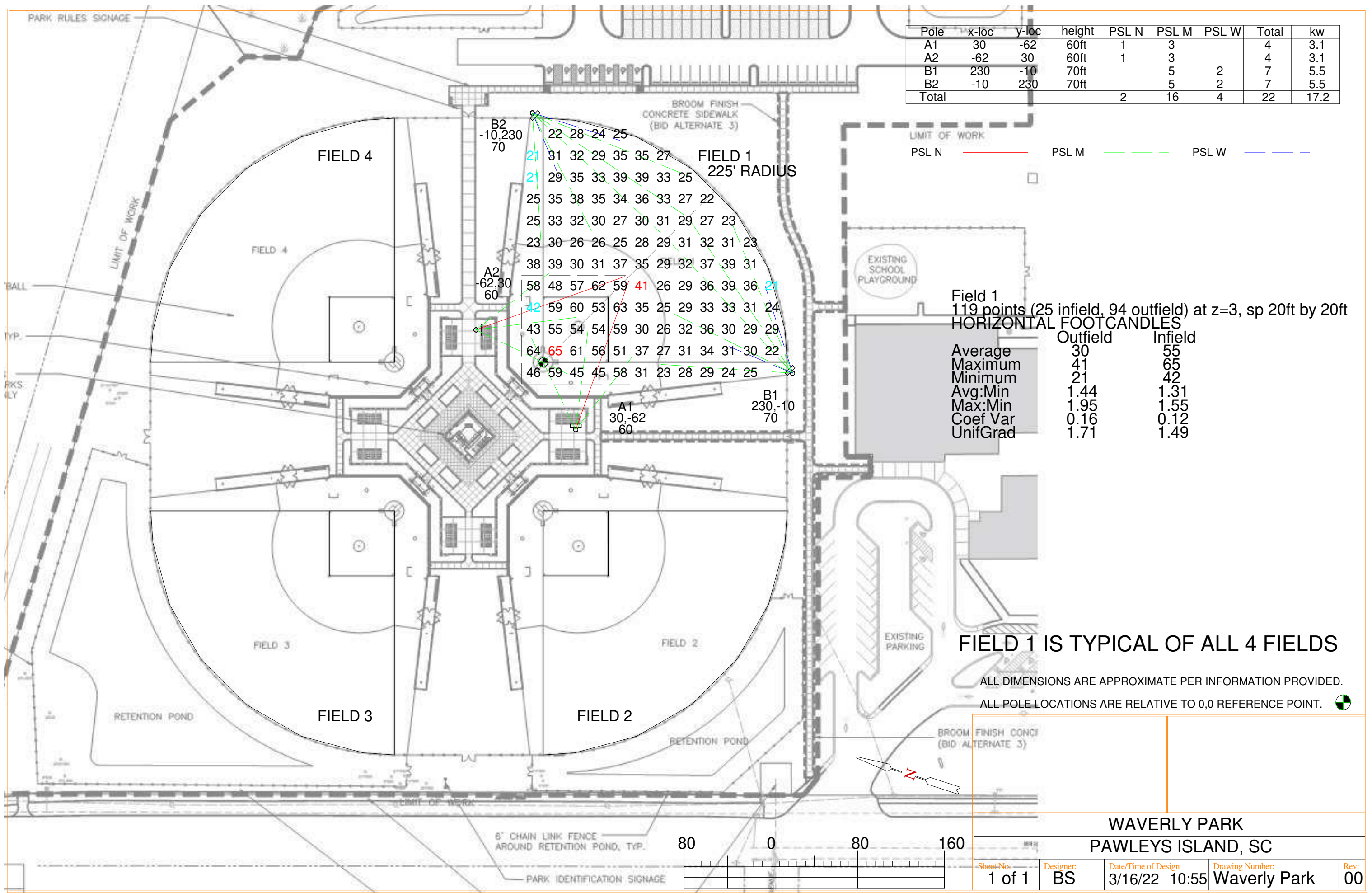
Premier Sports Lighting, LLC



Tab C

**On Field
Lighting Design**

Play the Game in a Better Light™



Pole	x-loc	y-loc	height	PSL N	PSL M	PSL W	Total	kw
A1	30	-62	60ft	1	3		4	3.1
A2	-62	30	60ft	1	3		4	3.1
B1	230	-10	70ft		5	2	7	5.5
B2	-10	230	70ft		5	2	7	5.5
Total				2	16	4	22	17.2

PSL N ——— PSL M ——— PSL W ———

Field 1
 119 points (25 infield, 94 outfield) at z=3, sp 20ft by 20ft
HORIZONTAL FOOTCANDLES

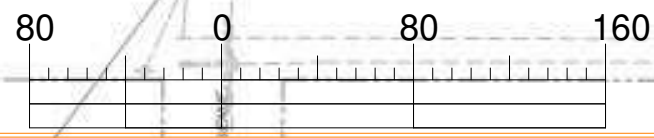
	Outfield	Infield
Average	30	55
Maximum	41	65
Minimum	21	42
Avg:Min	1.44	1.31
Max:Min	1.95	1.55
Coef Var	0.16	0.12
UnifGrad	1.71	1.49

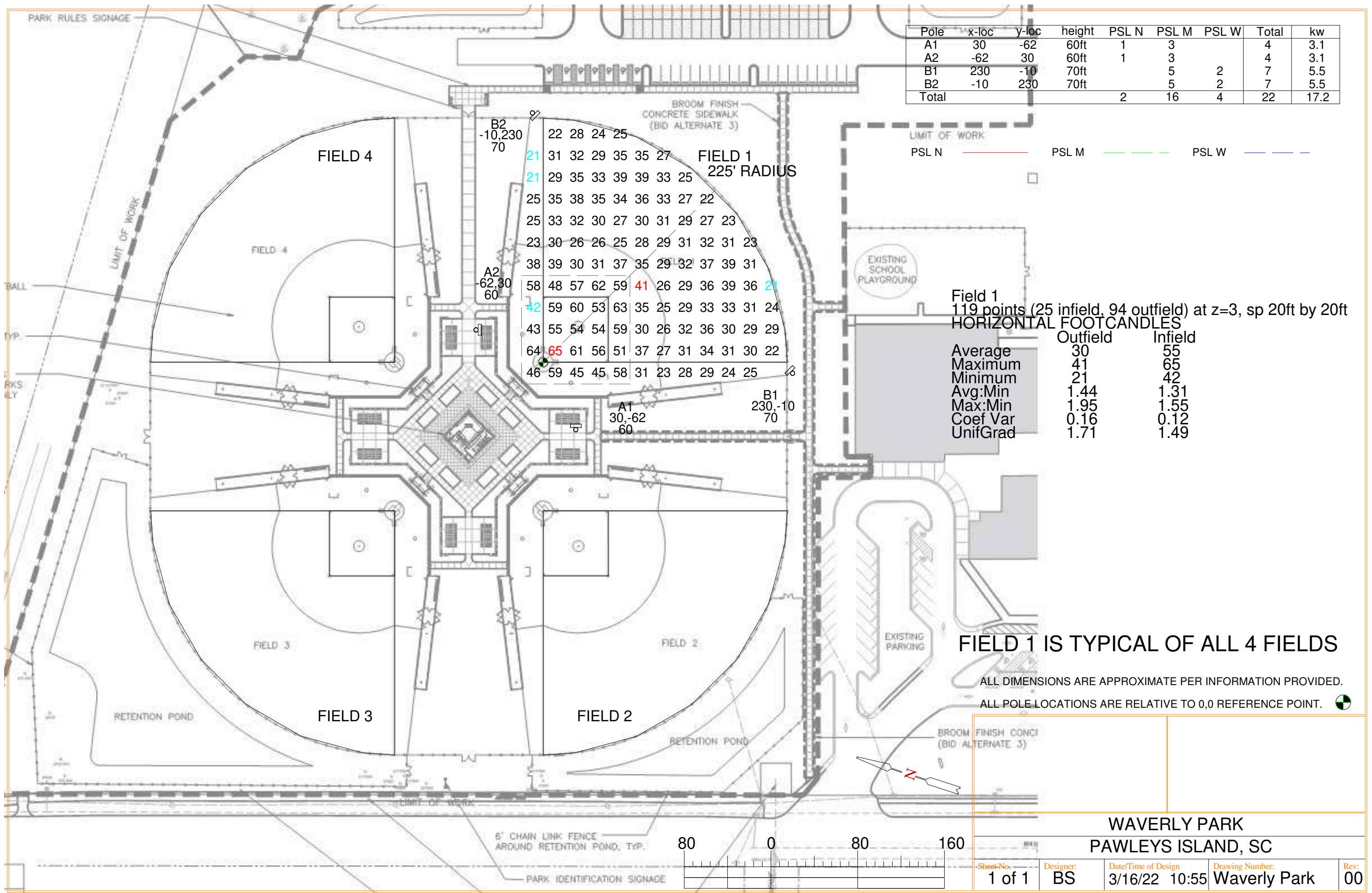
FIELD 1 IS TYPICAL OF ALL 4 FIELDS

ALL DIMENSIONS ARE APPROXIMATE PER INFORMATION PROVIDED.
 ALL POLE LOCATIONS ARE RELATIVE TO 0,0 REFERENCE POINT.

**WAVERLY PARK
 PAWLEYS ISLAND, SC**

Sheet No: 1 of 1	Designer: BS	Date/Time of Design 3/16/22 10:55	Drawing Number: Waverly Park	Rev: 00
---------------------	-----------------	--------------------------------------	---------------------------------	------------





Pole	x-loc	y-loc	height	PSL N	PSL M	PSL W	Total	kw
A1	30	-62	60ft	1	3		4	3.1
A2	-62	30	60ft	1	3		4	3.1
B1	230	-10	70ft		5	2	7	5.5
B2	-10	230	70ft		5	2	7	5.5
Total				2	16	4	22	17.2

FIELD 1
225' RADIUS

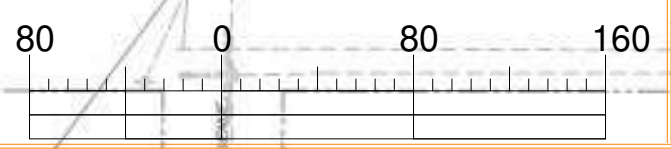
22	28	24	25
21	31	32	29
21	29	35	33
25	35	38	35
25	33	32	30
23	30	26	26
38	39	30	31
58	48	57	62
42	59	60	53
43	55	54	54
64	65	61	56
46	59	45	45
25	28	24	25
27	35	35	27
25	39	39	33
22	34	36	33
23	30	31	29
23	29	31	32
31	29	32	37
31	26	29	36
21	33	33	31
29	30	32	36
29	31	34	31
22	28	29	24
25	23	28	29
31	23	28	29
24	25	28	29

Field 1
119 points (25 infield, 94 outfield) at z=3, sp 20ft by 20ft
HORIZONTAL FOOTCANDLES

	Outfield	Infield
Average	30	55
Maximum	41	65
Minimum	21	42
Avg:Min	1.44	1.31
Max:Min	1.95	1.55
Coef Var	0.16	0.12
UnifGrad	1.71	1.49

FIELD 1 IS TYPICAL OF ALL 4 FIELDS

ALL DIMENSIONS ARE APPROXIMATE PER INFORMATION PROVIDED.
ALL POLE LOCATIONS ARE RELATIVE TO 0,0 REFERENCE POINT.



**WAVERLY PARK
PAWLEYS ISLAND, SC**

Sheet No: 1 of 1	Designer: BS	Date/Time of Design: 3/16/22 10:55	Drawing Number: Waverly Park	Rev: 00
---------------------	-----------------	---------------------------------------	---------------------------------	------------



Tab F

Performance Guarantee

Play the Game in a Better Light™



Performance Guarantee

Premier Sports Lighting, LLC will guarantee the performance and will make all corrections necessary to meet the specifications at no expense to the owner.

Additionally, light levels are guaranteed to not fall below the target light levels for the duration of the warranty period.

A handwritten signature in black ink, appearing to read "Andrew Weathers", with a long horizontal line extending to the right.

Andrew Weathers

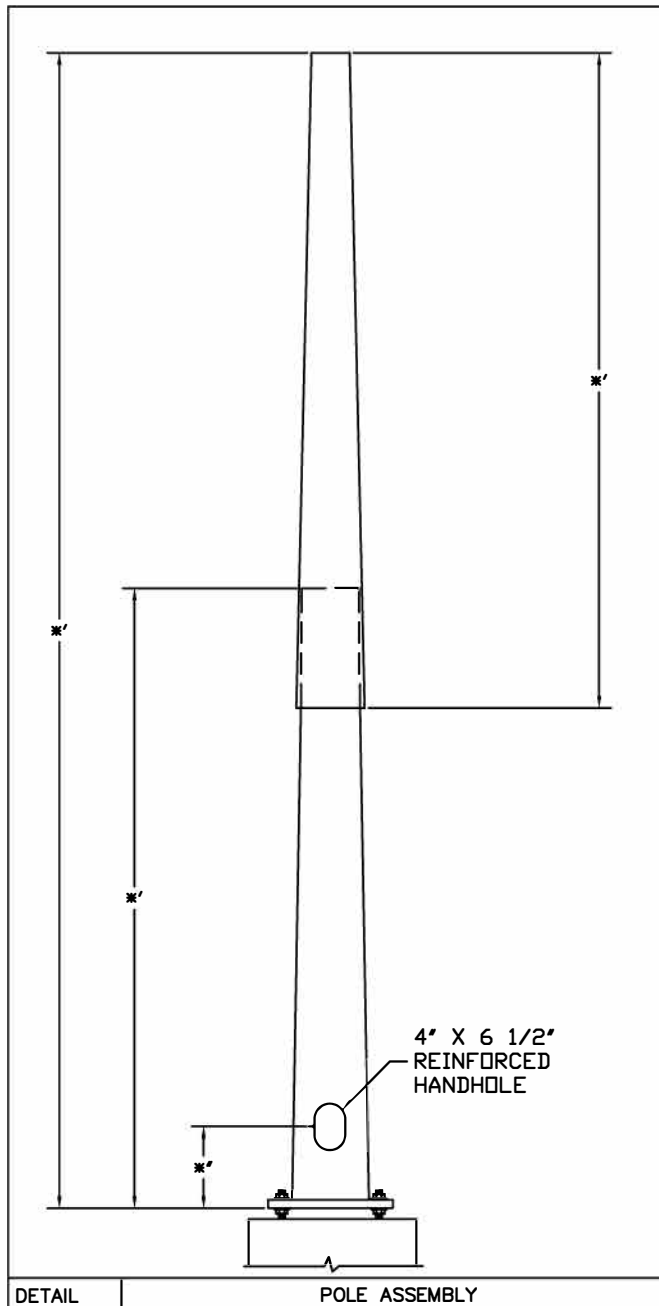
Play the Game in a Better Light™



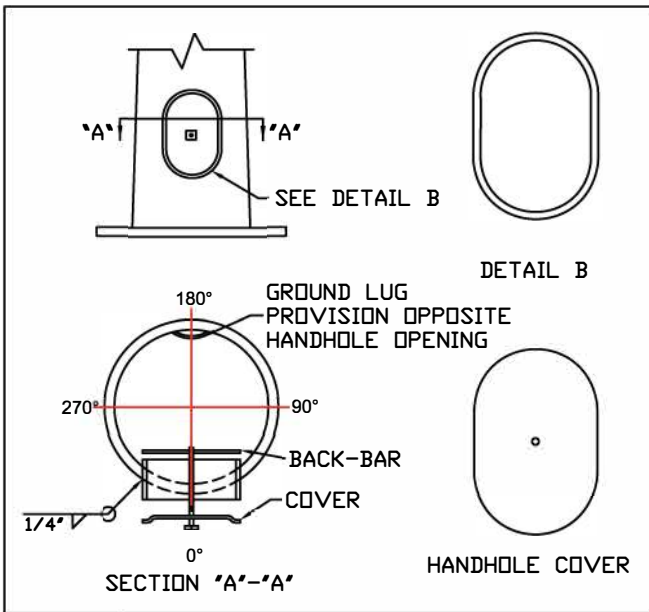
Tab G

Structural Calculations

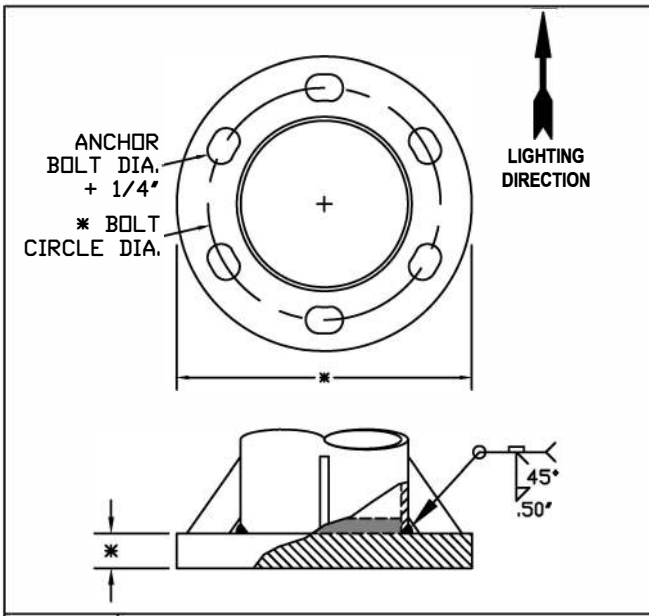
Play the Game in a Better Light™



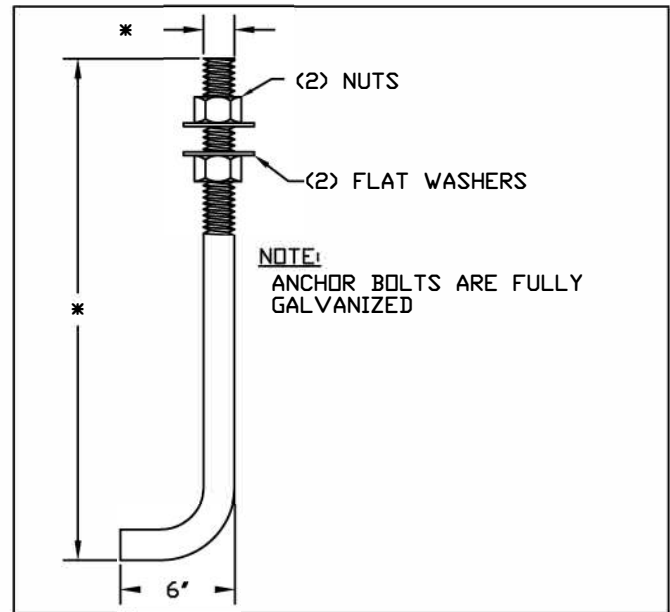
DETAIL 1 POLE ASSEMBLY



DETAIL 3 TYPICAL HANDHOLE



DETAIL 4 BASE PLATE



DETAIL 1 ANCHOR BOLTS

COMPONENT	SPECIFICATION
POLE TOP	ASTM A572 GR. 65
POLE BOTTOM	ASTM A572 GR. 65
MISC. STEEL	ASTM A36
ANCHOR BOLTS	ASTM F1554 GR. 55
BASE PLATE	ASTM A572 GR. 50

- GENERAL NOTES:**
1. ALL HARDWARE TO BE GALVANIZED TO ASTM A153.
 2. POLE ASSEMBLY TO BE GALVANIZED TO ASTM A123.
 3. ALL WELDING TO CONFORM TO AWS D1.1 MOST RECENT EDITION.
 4. DESIGN INCORPORATE GUST FACTOR PER REF CODE.
 5. REFER TO GENERAL INSTALLATION INSTRUCTIONS PRIOR TO ASSEMBLY.

FINISH:	WIND SPEED:	DESIGN CRITERIA:
<input checked="" type="checkbox"/> GALVANIZED	<input type="checkbox"/> 80 MPH <input type="checkbox"/> 110 MPH	<input type="checkbox"/> AASHTO LTS3 <input type="checkbox"/> ASCE
<input type="checkbox"/> PAINTED	<input checked="" type="checkbox"/> 90 MPH <input type="checkbox"/> 120 MPH	<input checked="" type="checkbox"/> AASHTO LTS4/5 <input type="checkbox"/> DSA
<input type="checkbox"/> PAINTED & GALV	<input type="checkbox"/> 100 MPH <input type="checkbox"/> ___ MPH	<input type="checkbox"/> IBC <input type="checkbox"/> UBC

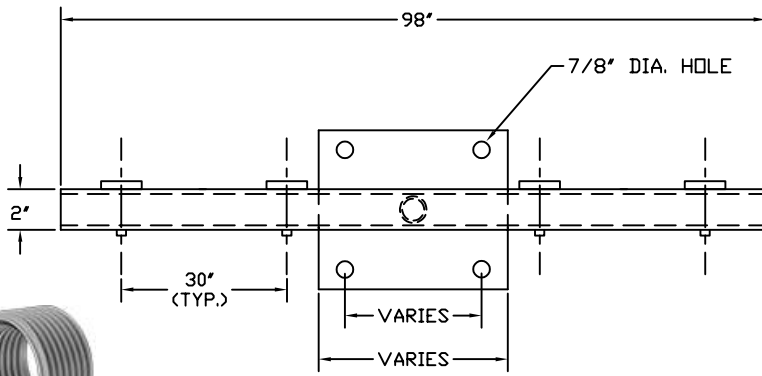
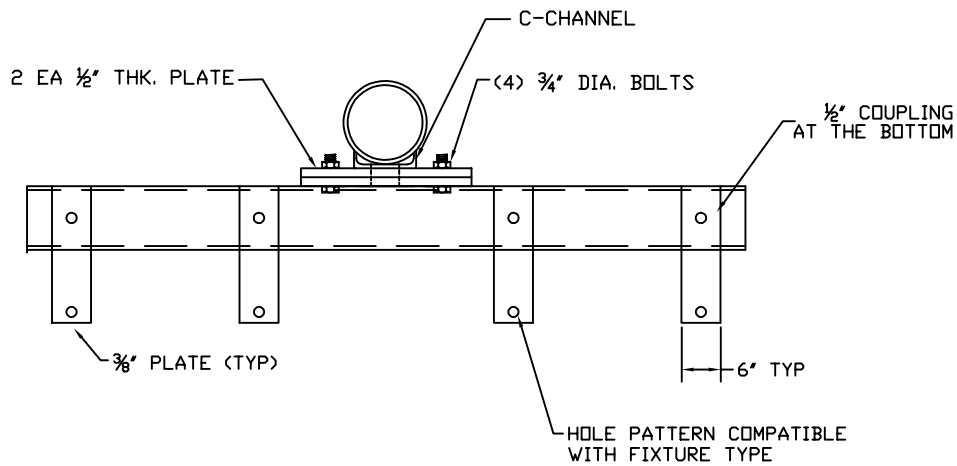
DETAIL 2 MATERIAL SPECIFICATIONS



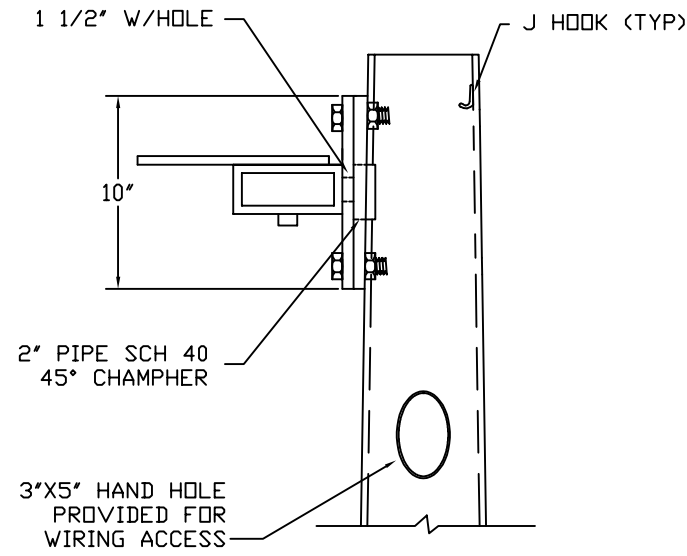
2100 CHESPAK DRIVER
 GASTONIA, NC 28052
 OFFICE (800) 674-6058
 EMAIL: SALES@PSL-SPORTS.COM

DATE:	REV.:	JOB NO.:	SCALE:
	00	NA	NTS
DRAWING NUMBER:		DRAWN BY:	QUOTE NUMBER:

ANCHOR BOLT CUTSHEET EXAMPLE



Galvanized Steel, 3/4" Male NPT
(on undersized of cross-arm)



2100 CHESPAK DRIVE
GASTONIA, NC 28052
OFFICE (800) 674-6058
EMAIL: SALES@PSL-SPORTS.COM

DATE:	REV.: 00	CHECKED BY: N/A
DRAWING NUMBER: TCA-4-PSL		DRAWN BY:

EXAMPLE: 4-LIGHT CROSS ARM

Cross-Arm End



Fixture End



Fixture Level Locking Connectors

(600V, 16A Rated)

(after connection is made, the pluggable connectors rest inside cross-arm)

Stainless Steel Braided Geothermal Hose on Fixture
(Allows for no exposed wires to the elements)



Remote Enclosure
(Holds up to 12 drivers)
Mounts with 5/8" DA bolts on new construction & stainless steel straps for retrofits)



Electrical Service
(2" aluminum meyers hub & stainless steel nipple)



Wire Harness

(Individually boxed per cross arm assembly)
Equipped with 600V rated quick disconnects & galvanized steel Kellems grip



2100 CHESPAK DRIVE
GASTONIA, NC 28052
OFFICE (800) 674-6058
EMAIL: SALES@PSL-SPORTS.COM

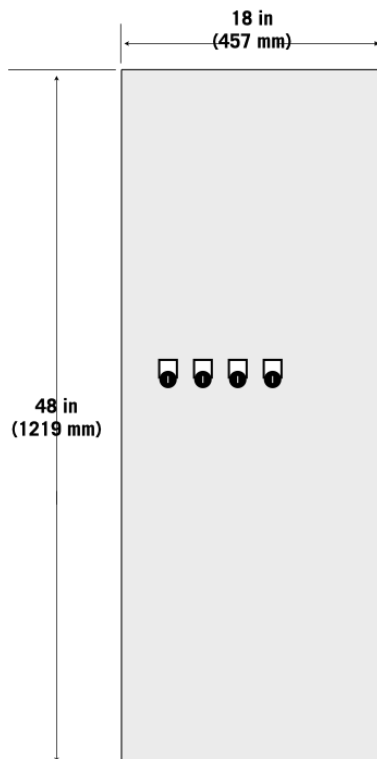
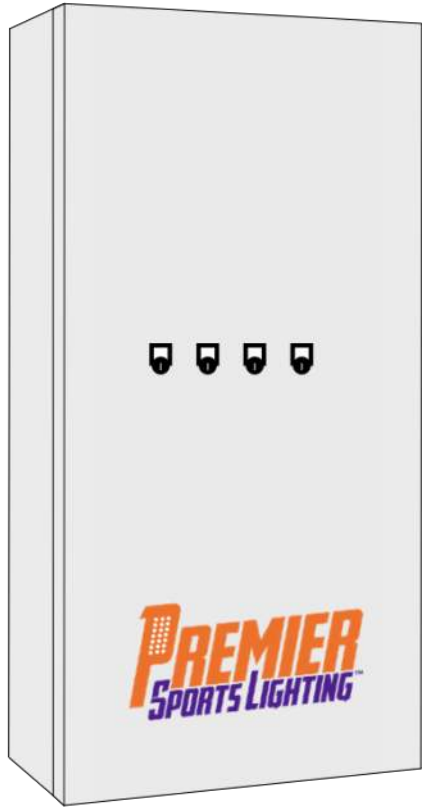
New Construction



Tab H

Control & Monitoring System

Play the Game in a Better Light™



Overview

Lighting contractor cabinet provides on/off control of lighting system, remote monitoring and manual key-switch operation.

Control Features

- Lighting system and other customer equipment
- Key-activated switches allow manual control
- Up to 12 controllable zones via Modbus relays
- Industrial PC operating custom software

Technical Specifications

- Operating Temperature: -4°F to 140°F (-20°C to 60°C)
- Weight: Max 62 lb (28 kg)
- Dimensions: 48 x 18 x 8 in (1219 x 457 x 203 mm)

Contactors Current Rating

- 38A
- 50A
- 95A

Construction

- NEMA 4
- Powder coated aluminum (14 gauge)
- Lockable
- Supports up to 480Vac
- Control system operates 200-480Vac
- 24Vdc coil contactor control voltage



CONTROL PRO+™

Wireless Lighting Control System



TOP PRODUCT FEATURES

- Master controller installed at electrical panel in enclosure provided by Premier Sports Lighting.
- Carrier-Class Throughput
- Delivers up to 300+ Mbps real TCP/IP throughput
- Dual frequency ability to find the best for your location

Control Pro Air™ Specifications

Manufacturing Material	Polycarbonate
Networking Interface	Gigabit Ethernet Port
Antenna Connector	N-Type Connector
Antenna	Dual Band (2.4GHz & 5GHz) Omni Fiberglass
Throughput	
2.4 GHz	160+ Mbps
5 GHz	300+ Mbps
Max Power Consumption	8W
Output Power	22 dBm
Power Supply	24VDC, 0.3A (minimum)
Power Method	24V Passive POE (Pairs 4, 5+; 7, 8 Return)
ESD/EMP Protection	24 kV Contact / Air
Operating Temperature	-40 to 70°C (-40 to 158°F)
Operating Humidity	50 to 95% Noncondensing
Shock and Vibration	ETSI300-019-1.4
Certifications	CE, FCC, IC
TX Power Specification	8x 256QA (5/6) 18 dBm
RX Power Specification	8x 256QA (5/6) -62 dBm
Operating Frequency (MHz)	
2.4GHz	2400-2483.5
5GHz	5150-5875
Cellular (Remote Access)	Verizon LTE or AT&T

Control Pro Air™ Functions

Maximum # of Channels	Up to 1,024
Maximum Distance away from Master Controller	1,500 feet
Light Control	(5) Pre-programmed theatrical scenes controlled via web interface
Monitoring	Real-time monitoring of lighting status at the fixture and system level, outage notifications, storage of power consumption, and other system parameters which can be retrieved for later analysis*
Remote Monitoring	Web interface can be accessed through the internet via any web-enabled device
Driver Failure	Notification through email of the location of the potentially failed driver via 12Vdc Digital Input signal loss. Example: Pole 1 fixture 8
Lightning Monitoring	Notification of lightning strikes within 8 miles. Strikes within 1 mile will trigger a diagnostic system check to search for potential damages.
User Permissions	User and administrative accounts with multiple permission levels available
Scheduling	Ability to schedule up to 10 years in advance. Save up to 1000 schedules against memory loss.






CONTROL PRO+™

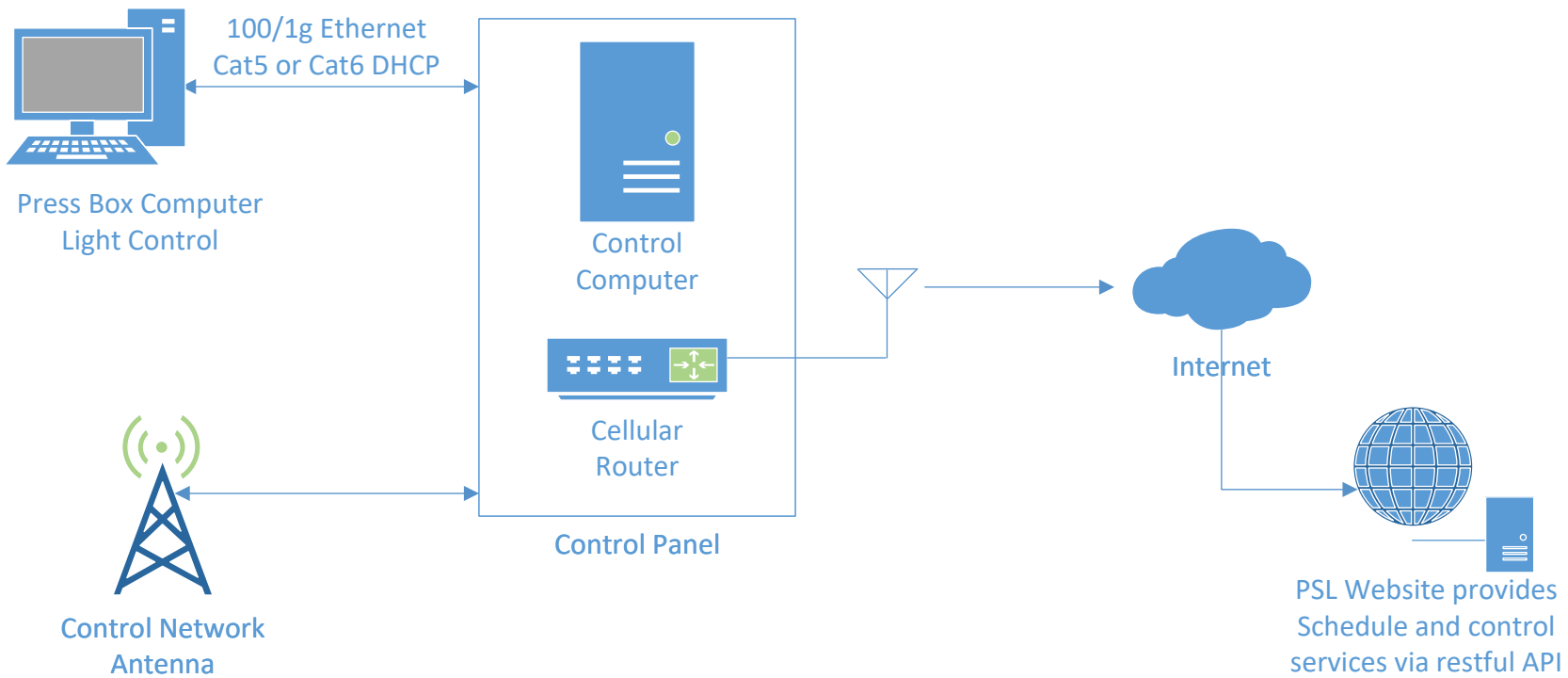
Wireless Lighting Control System



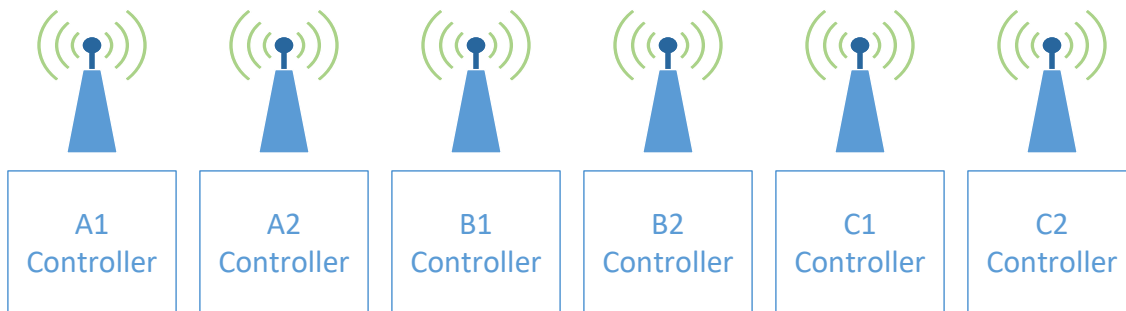
The Control Pro Air™, a wireless control system that provides theatrical scenes and effects, comes standard with (5) pre-designed and uploaded scenes with the capability to build new scenes*. For instance, build scenes to spotlight the national anthems, athlete introductions, halftimes, blackout the stadium, maintenance, and safety egress scenes.

Theatrical Scenes

Product	Color Type	Standard Scenes	Dancing Scenes
750w			
	5000K or 5700K	<ul style="list-style-type: none"> • High (100%) • Medium (66%) • Low (33%) • Blackout (0%) 	<ul style="list-style-type: none"> • Pole Chase • Fixture Chase • Alternate • Flash (Standard & Fast)
1500W			
	5000K or 5700K	<ul style="list-style-type: none"> • High (100%) • Medium (66%) • Low (33%) • Blackout (0%) 	<ul style="list-style-type: none"> • Pole Chase • Fixture Chase • Alternate • Flash (Standard & Fast)
RGB			
	5000K or 5700K	<ul style="list-style-type: none"> • High (100%) • Medium (66%) • Low (33%) • Blackout (0%) • RGB Color Mixing 	<ul style="list-style-type: none"> • Pole Chase • Fixture Chase • Alternate • Flash (Standard & Fast) • RGB Flash



192.168.20.XX/24



EXAMPLE

Premier Sports Lighting Gastonia NC	Customer:
Project: Baseball Field Lighting	Drawing: Lighting Control Network
Author: Richard McSwain	Date: 01/10/2022 V2



Tab I

Electrical Distribution Plans

Play the Game in a Better Light™



Electrical Distribution Plans

Premier Sports Lighting, LLC will provide electrical distribution plans stamped by a professional engineer licensed in South Carolina if awarded the project.

Note:

Premier Sports Lighting, LLC provided photometric layouts show that there KW is lower than the basis of design from Musco Sports Lighting.

A handwritten signature in black ink, appearing to read "Andrew Weathers", with a long horizontal line extending to the right.

Andrew Weathers



Tab J

Warranty

Play the Game in a Better Light™



25-YEAR / 10-YEAR ALL-INCLUSIVE WARRANTY

Premier Sports Lighting, LLC provides a 25-year and 10-year “all-inclusive warranty” to the owner for complete peace of mind at no out-of-pocket cost.

What this warranty covers:

Premier Sports Lighting, LLC warrants both the 750-watt and 1,500-watt Remote Pro™ LED Lighting System for 25 years or 15,000 hours of usage from failure. All fixtures and or components are covered under this warranty for the full 25 years. All necessary labor, parts, wiring, etc. will be replaced or corrected at Premier’s expense. The use and cost of equipment (cranes, lifts or other heavy construction equipment) is included in this warranty at Premier’s expense.

What is covered and included:

- Total system coverage, lights, poles, drivers, controls, etc.
- All labor
- Lifts, crane or other equipment required for repair
- All parts will be supplied by PSL at no cost to owner
- Light levels are guaranteed for full 25-year period
- Fixture aiming and mounting is guaranteed.

What is not covered:

- Acts of God (*flood, hurricane, lightning, tornado, strong winds, hail, etc*)
- Vandalism
- Damage from improper installation
- Non-compliant power conditions (*power surges, etc.*)

Conditions of Service:

- Adequate, pre-determined egress/ingress is required for heavy service equipment
- Safe working environment for crews

Response Time:

- Normal non-emergency service work will be scheduled within owner’s requirements
- Emergency service response will occur within a 24-hour period

Notes:

- This warranty is intended for normal usage for all Premier Sports Lighting’s system’s that would be installed on a grade school, high school sports venue, charter schools, park and recreation, collegiate level or other venue with normal use considerations. Please contact Premier Sports Lighting for high or extreme use facilities.
- If using existing poles in a retrofit/upgrade project the warranty automatically becomes 10 years.
- 15,000 of usage equates to 600 hours per year of available usage.

Play the Game in a Better Light™



Tab K

Project References

Play the Game in a Better Light™



Project References

Eric Sabin ~ Clemson University Athletics

Associate Athletic Director / Facilities Management & Capital Projects

Jervey Athletic Center

220 Perimeter Road, McFadden 119

Clemson, SC 29633

Email: sabin@clemson.edu

Tel: (850) 528-6646

Scope of Work: Retrofit of Soccer Stadium (May 2022)

Eric Thorp ~ Christ School

Athletic Director

500 christ School Rd.

Arden, NC 28704

Email: ethorp@christschool.org

Tel: (828) 684-6232 ext. 128

Scope of Work: New Baseball and Lacrosse Fields

Amanda Brooks P.E., RCDD ~ Optima Engineering

Electrical Engineer

150 Fayetteville Street, Suite 520

Raleigh, NC 27601

Email: abrooks@optimaengineering.com

Tel: (919) 413-3566

Scope of Work: Approved our system for the upgrade of Carter-Finley Stadium (NC State Football)

Eric George ~ Mississippi State University

Executive Senior Associate A.D./CFO

288 Lakeview Drive

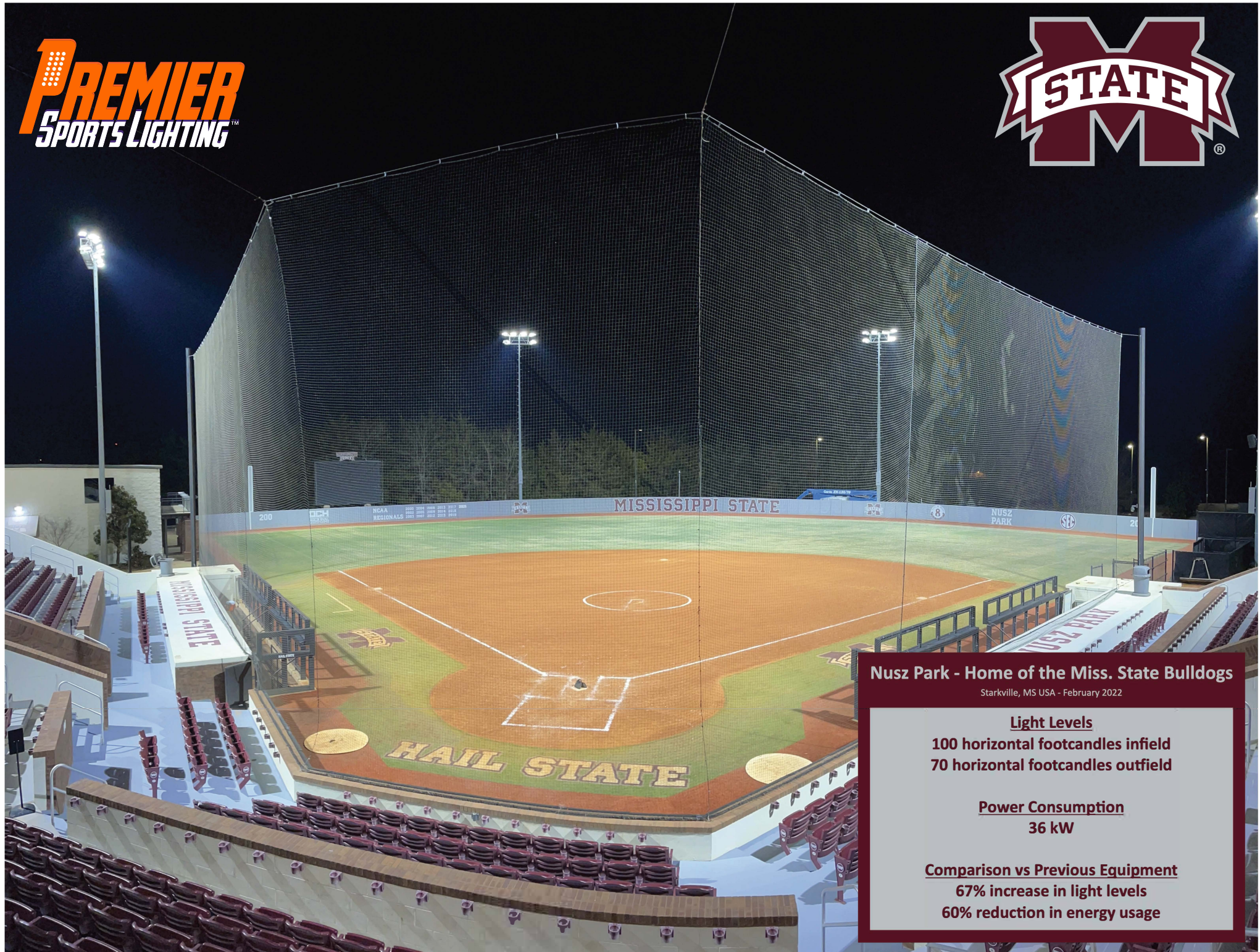
Mississippi State, MS 39762

Email: egeorge@athletics.msstate.edu

Tel: (662) 325-8670

Scope of Work: Softball Field Upgrade (more venues to come)

PREMIER
SPORTS LIGHTING™



Nusz Park - Home of the Miss. State Bulldogs

Starkville, MS USA - February 2022

Light Levels

100 horizontal footcandles infield
70 horizontal footcandles outfield

Power Consumption

36 kW

Comparison vs Previous Equipment

67% increase in light levels
60% reduction in energy usage



**Historic Riggs Field ~ Home of the Clemson University Tigers
Coming April 2022**





Project References

Name	Location	Field Type	Year Completed
Elkin Parks and Rec	Elkin, NC	High School Softball	2018
City of Pickens	Pickens County, SC	5 year Agreement	2018-2023
Pendleton High School	Pendleton, SC	New Soccer & Track	2019
Christ School	Arden, NC	Baseball & Lacrosse	2021
Pendleton High School	Pendleton, SC	Football Retrofit	2021
Mississippi State University	Starkville, MS	Softball Stadium	2022
Greenwood Parks & Rec	Ninety Six, SC	4 Baseball Fields	2022*
Clemson University	Clemson, SC	Soccer Stadium	2022*
Rock Springs Academy	Milner, GA	4 Baseball Fields	2022*
Piedmont Community Charter	Gastonia, NC	Soccer Stadium	2022*
Georgia Highlands College	Cartersville, GA	New Baseball & Softball Stadium	2022*
Mississippi State University	Starkville, MS	Track and Field Stadium	2022*

Play the Game in a Better Light™



Tab L

Product Information

Play the Game in a Better Light™

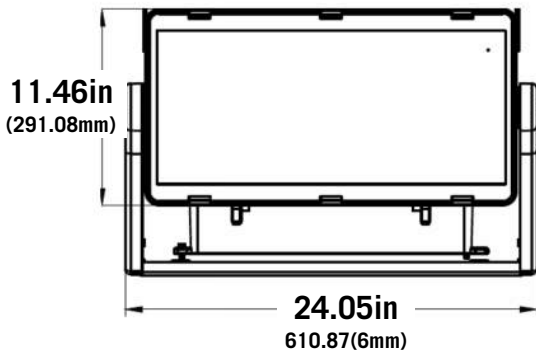


TOP PRODUCT FEATURES

- 112,000+ lumen output
- Glare and cutoff control via Louver and TIR Optical System
- Virtually eliminate maintenance with accessible components
- Industry leading light source reliability with low driver current LEDs
- Wireless, Wired DMX or sACN controls options to suit your needs
- Impact Resistant Tempered high transmission glass that protects from vandalization and prevents down time in the event of impact to the glass.

LUMINAIRE FEATURES

Delivered Lumens	Up to 112,500
Input Wattage	Up to 788
Input Voltage	180-528VAC
Efficiency Range	130-144 lm/W
CRI	75 typical. 70 minimum
Color Temperature (CCT)	5700K
Distribution	Narrow, Medium, Wide
Dimming Range	DIM TO OFF, 10%-100%
UL ambient temp. Rating	-40°C to +45°C (-40°F to 113°F)
Usage	Indoor & Outdoor
Mounting Option (3G Rated)	Local Yoke
Surge Protection	Each enclosure is equipped with 75kVa
Weight (luminaire)	35 lbs
EPA (Effective Projected Area)	≤ 1.84 (sq. ft.)
Ingress Protection	IP 66
Material & Finish	Die cast aluminum, powder coated



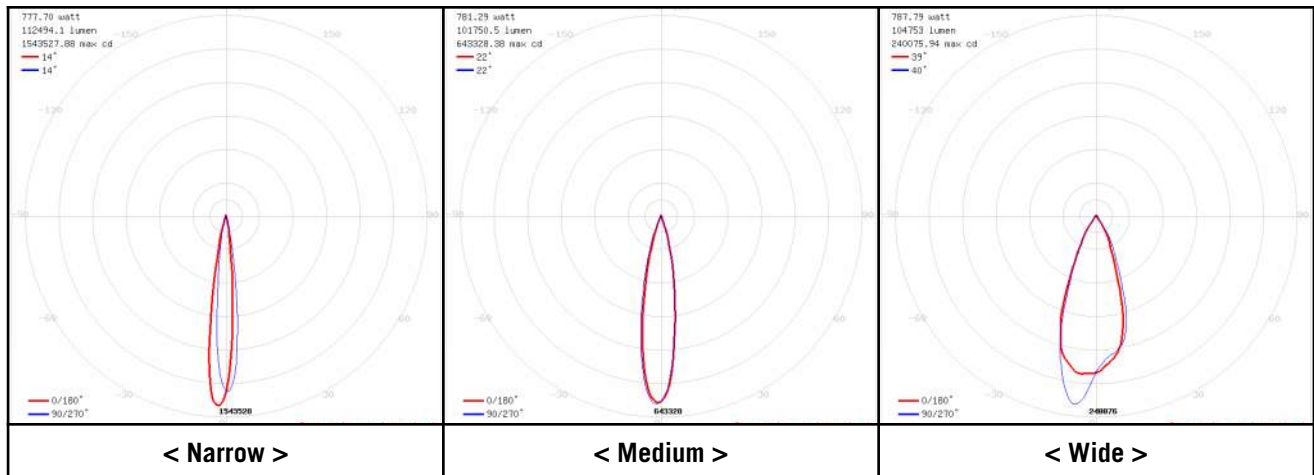
Electrical Performance Data

PN	Input Voltage Range	Nominal Input Power	Input Current	Power Factor (>60%load)	THD (>60%)	Inrush (A2s)	Inrush Period (ms)	Peak Inrush (A)
750W	180-240V	781	3.5A Max	> 0.97	≤ 4%	< 0.25	3.2	15
	277V	781	3.5A Max	> 0.97	≤ 3%	< 0.25	3.2	15
	480V	781	2A Max	> 0.95	≤ 10%	< 0.50	3.3	20

Optical Performance Data

Optic	NEMA Type	CRI	CCT	Delivered Lumens	Input Power	Lm/W	Beam Angle	Field Angle
Narrow	NEMA 2	Typical 75	5000K	112,494.1	777.70	144.65	H12.7 V12.9	H26.3 V25.0
		Typical 75	5700K	112,491.1	777.70	144.65	H12.7 V12.9	H26.3 V25.0
Medium	NEMA 3	Typical 75	5000K	101,750.5	781.29	130.23	H20.4 V19.7	H38.9 V37.1
		Typical 75	5700K	101,750.5	781.29	130.23	H20.4 V19.7	H38.9 V37.1
Wide	NEMA 4	Typical 75	5000K	104,753.0	787.79	132.97	H37.4 V39.4	H67.1 V65.2
		Typical 75	5700K	104,753.0	787.79	132.97	H37.4 V39.4	H67.1 V65.2

Photometry Data (750W / 5000K / 75 CRI)



Designed and Engineered
IN THE USA



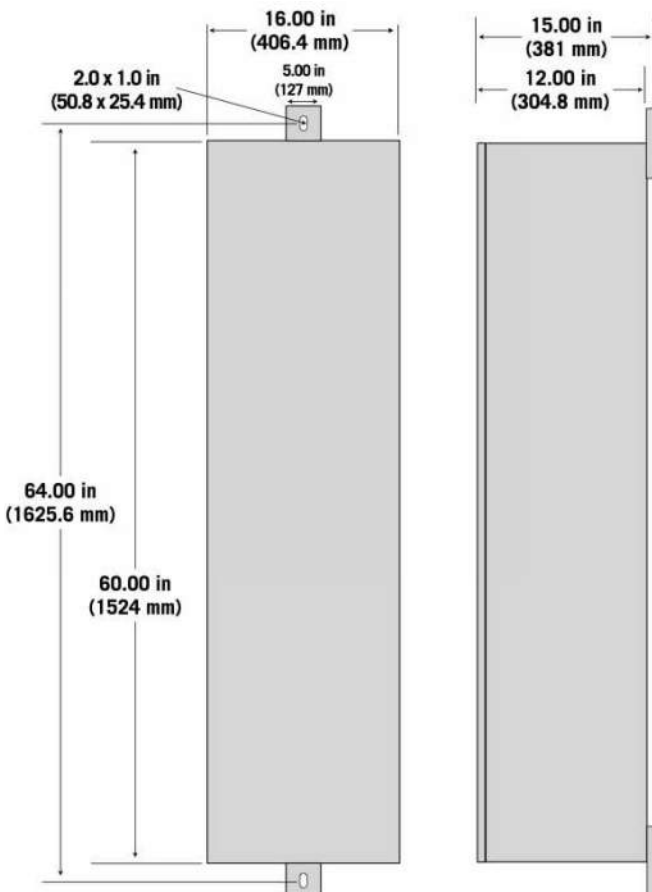
REMOTE PRO ENCLOSURE

Premier Sports Lighting's Remote Pro™ System is a premium lighting solution for professional quality sports lighting applications. Our remote driver system allows for each access to critical components from a small step ladder. The days of going to the top of the pole for maintenance are over. A single 60" enclosure allows for up to (12) 750w luminaires, which means we require less enclosures to be mounted than our competitors.



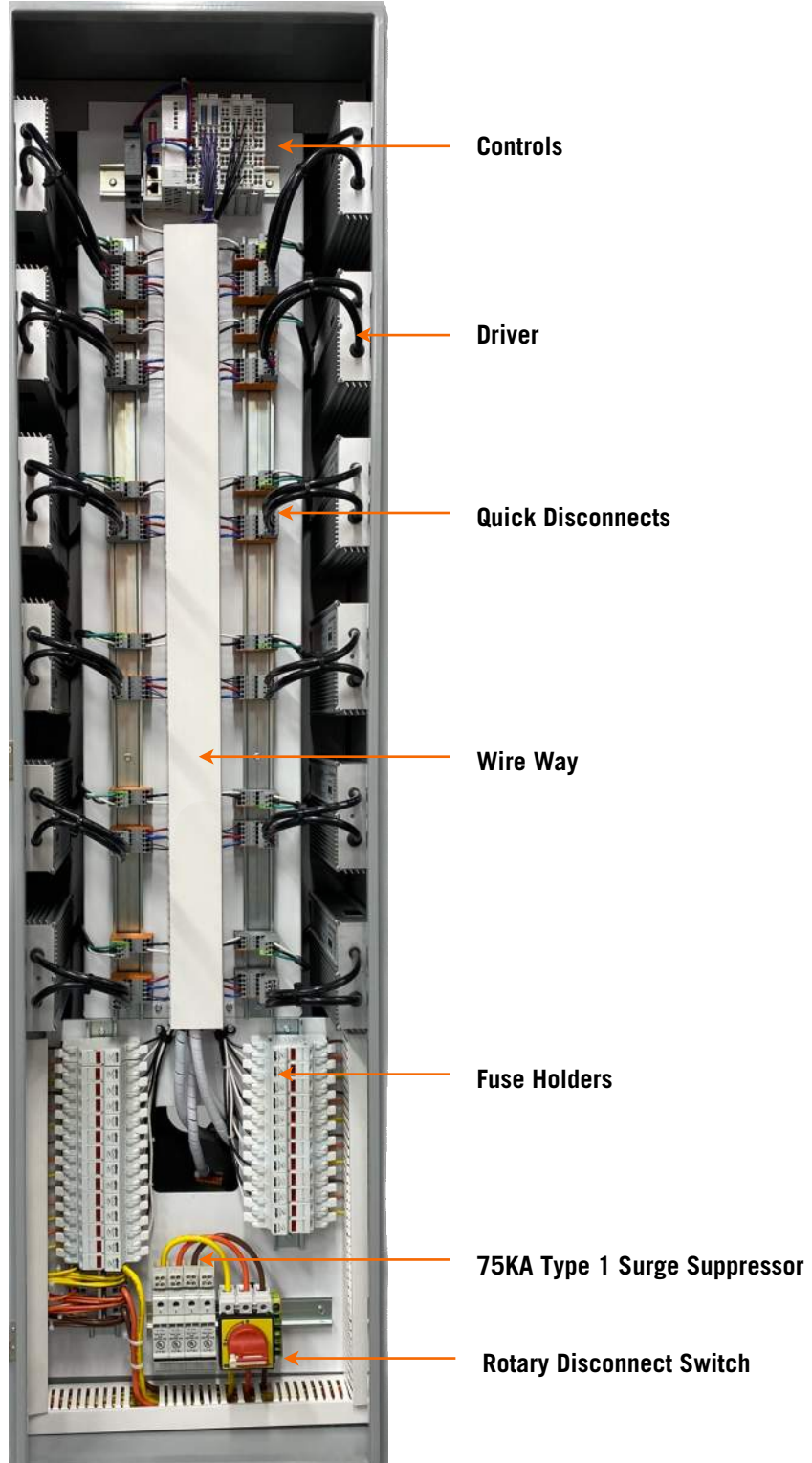
Features

- Factory-built and tested as a unit
- Quick connect plugs for easy field wiring
- Mounted 10ft above grade for servicing with ladder
- Labeled with pole identification and electrical information
- Drivers individually fused and spare fuses supplied
- Wire access from inside the pole (no exposed wiring or conduit)
- Rotary Disconnect per circuit
- Type 1, 75kA surge arrestor before the disconnect switch, providing exceptional surge protection



Technical Specifications

- Constructed of aluminum and powder-coated
- Enclosure ratings: NEMA 3R, IP54
- Designed to operate in up to 60° C (140° F) ambient temperature
- Aluminum lift off hinges for easy access to interior of enclosure
- Stainless steel lockable latches
- Meets touch-safe standards
- Up to 12 drivers per enclosure
- Approximate weight <125 lbs fully assembled
- Grounding continuity
- Fully tested before leaving factory



Overview

Transient surge is the most detrimental event that can happen to a LED sports lighting system. That's why we provide superior protection on our complete system.



Main Distribution Panel

At all main distribution panels a 200kA UL1449 Type 1 surge suppression device is mounted and it is installed in parallel. Additionally, there is visual and audible fault indicators.



Remote Driver Enclosures

At each remote driver enclosure a UL1449 Type 1 75kA surge suppression device is installed. The main 3P 4W feed directly into our surge suppressor providing unmatched protection in the LED sports lighting industry. Each phase protector has visual fault indicators and remote contacts.



Driver Fusing

Each driver utilizes (2) Littelfuse Midget Fuse-holders with blown fuse indication. Each fuse holder utilizes 10Amp slow blow fuses manufactured by Eaton Bussman.

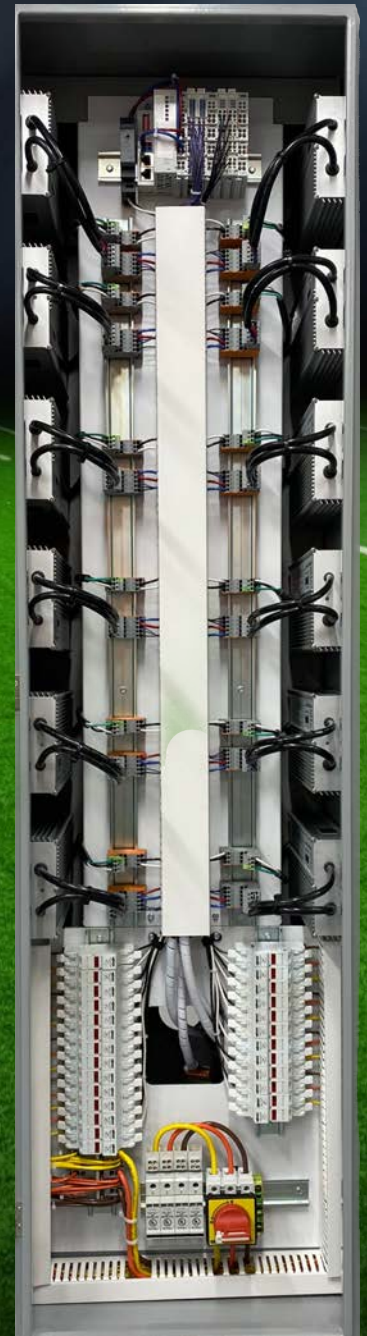


Driver Protection

Each driver is protected line to line 6kV, line to ground 10kV. Each driver utilizes 600V rated quick disconnects for AC, DC and Control wires for easy exchange in the event of a failure.

REMOTE PRO™ 750

PLAY THE GAME IN A BETTER LIGHT™



- ✓ Remote Drivers 10' Above Grade
- ✓ Lightning & Surge Suppression
- ✓ No Exposed Wiring To The Elements
- ✓ Easy Accessibility For Maintenance
- ✓ Equipped With Quick Disconnects
- ✓ Unmatched Glare & Spill Control

Ready to upgrade your venue with an LED sports lighting system? Have a question? Let our experts create your tailored solution. Just give us a call at (800) 674-6058 or email us at sales@psl-sports.com. We look forward to assisting you.

PREMIER
SPORTS LIGHTING™

SEEKING BETTER LIGHT

At Premier Sports Lighting, we're obsessed with going beyond the imagined possibilities of what light can do. The Remote Pro™ 750 is the result of advanced LED technology and Premier's need to constantly improve the overall performance and value of our products. Utilizing Premier's cutting-edge technology, the Remote Pro™ 750 blends extreme optical control, advanced thermal management and modern clean aesthetics to dramatically reduce maintenance and energy costs for a rapid return on investment.

PRODUCT SUMMARY

Initial Delivered Lumens: Up to 112,000 lumens

Initial Power: Up to 781 watts

Color Rendering Index (CRI): Typical: 75, Minimum: 70

CCT: 5000K (+/- 300K), **5700K** (+/- 500K)

Replaces: Multiple 1500W HID

Enclosure: 60" Aluminum, NEMA 3R Rated

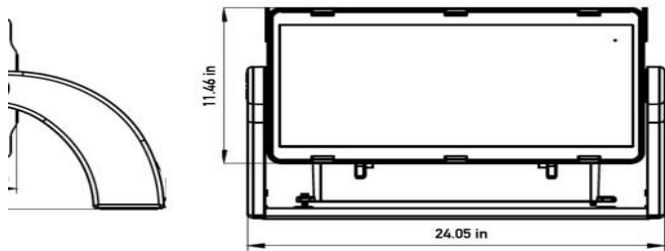
Limited Warranty: Standard 10 Year Parts & Labor (Up to 25 year)

TYPICAL FOOTBALL FIELD PRODUCT COMPARISON

	Remote Pro™ 750	Competitor M	Metal Halide
# of Fixtures	36	40	72
CRI	75	75	60
CCT	5700K	5700K	3800K
Total System KW	28.12	50.36	115.92
Efficacy (LPW)	Up to 142	Up to 115	Up to 75

41% Energy Savings vs. Competitor M / 75% Energy Savings vs. MH

LUMINAIRE DIMENSIONS



Weight: 25 lbs. (11.34 kg)

Visit psl-sports.com or contact a Premier Sports Lighting representative to learn more

sales@psl-sports.com | 800.674.6058

APPLICATIONS



Professional & Collegiate

Our systems offer a stunning theatrical effect for fans to really engage in the contest. The technology in our systems meets the needs of your venue and more importantly, your budget.



K-12

Your costs don't stop after your sports lighting system purchase. Our systems offers the lowest TCO ... guaranteed. Our energy efficiency is unmatched in today's lighting market. That means our systems cost less to operate over their life.



Municipal

You're a central part of your community, so you want to give them the safest, most neighbor-friendly, and most energy-efficient light possible. Light your field, please your neighbors—and do it all under budget.

60in Enclosure



Dimensions

16 x 60 x 12 in

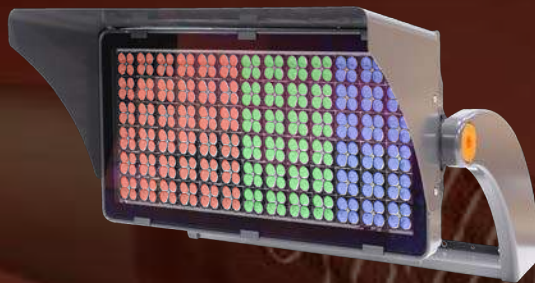
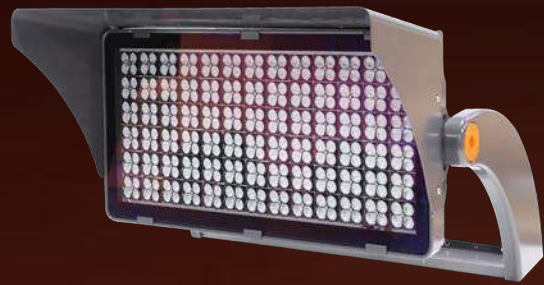
406.4 x 1524 x 304.8 mm



Designed and Engineered
IN THE USA



1 PREMIER
SPORTS LIGHTING™



**REVOLUTIONIZING
THE GAME** ...ONE FIELD AT A TIME



Play the Game in a Better Light®

ABOUT US

In late 2017 four friends in the lighting industry possessing 190+ years of hands-on sports lighting experience recognized the need to design and manufacture a high quality and extremely affordable LED sports lighting system. The Field Pro™ 750 & 1500 LED Remote or Integral system is now revolutionizing the market.

Features typically reserved for professional venues are now directly available to colleges, high schools, and municipalities who desire to reduce light spill, have lower energy consumption and virtually eliminate costly maintenance with our system. Contact a Premier team member or an installation partner for a turnkey quote to retrofit an existing metal halide field OR build a LED sports system with poles and wireless controls from ground-up.

EXPERIENCE

Premier Sports Lighting's team consists of seasoned sports lighting individuals who have experience from the smallest to the biggest projects and everything in between. Premier's management team collectively has designed, sold or installed over 5,000 sports lighting systems across the USA over the last (37) years ranging from Olympic venues to (20+) Professional sports venues to university settings, high school to municipal and P&R fields.

FINANCING

Too often, organizations and municipalities think a state-of-the-art LED sports lighting system is out of their financial reach. With Premier Sports Lighting Finance it isn't. We offer programs that tailor payment schedules and financing terms to nonprofit organizations, private industry, municipalities and public schools. By acting today, you can greatly enhance your facility while also realizing a number of fiscal benefits.

ASK ABOUT OUR NO PAYMENTS FOR 365 DAYS OPTION!

COOPERATIVE PURCHASING

As a NCPA vendor, Premier Sports Lighting can provide a complete sports lighting solution for your facility including poles, LED luminaires, mounting brackets, wired or wireless controls and turn key installation.

Contact Premier Sports Lighting today to learn how you can leverage our NCPA contract to save time, money, energy and frustration on your next sports lighting project.

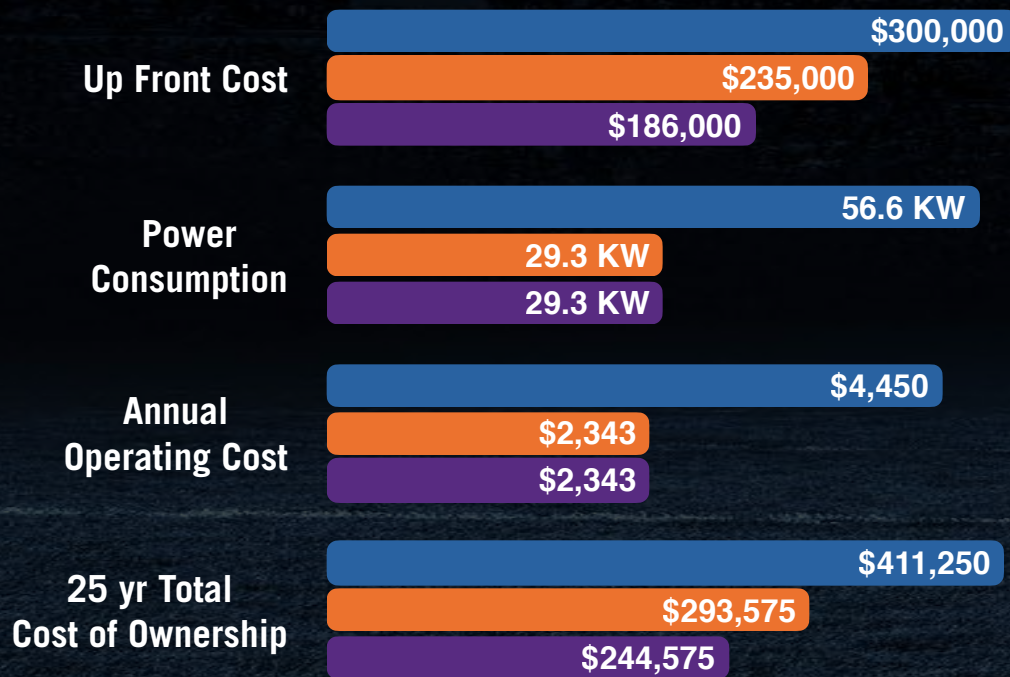


TOTAL COST OF OWNERSHIP

The total cost of ownership (TCO) is the purchase price of an asset plus the costs of operation. Assessing the total cost of ownership represents taking a bigger picture look at what the product is and what its value is over time. When choosing among alternatives in a purchasing decision, buyers should look not just at an item's short-term price, known as its purchase price, but also at its long-term price, which is its total cost of ownership. The item with the lower total cost of ownership is the better value in the long run. **The Field Pro™ LED Systems provide the lowest Total Cost of Ownership in the industry guaranteed!** Let us show you how to calculate TCO.

$$(((KW \times \text{hours of operation}) \times KWh) \times 25) + \text{Initial Cost} = \text{TCO over 25 years}$$

Actual High School Baseball Comparison



Musco

PSL ~ Remote

PSL ~ Integral

Our systems cost less to purchase AND operate for 25 years versus the competitor's ONLY purchase cost.

REMOTE PRO SYSTEM[®]

CROSS ARMS

- Galvanized tubular steel (2X4); provision for sealed wiring from fixture head to remote box
- Optional 2, 4, 6 and 8 fixture mounting arm
- Bolted 'plate to plate' cross arm to pole connection

RGB LUMINAIRE

- Create a fan experience like the pro's
- Requires Control Pro+ System*
- Can double as an Egress luminaire, saving additional costs

CONCRETE BASE

- PE stamped foundation designs per project specs
- Rebar enforced cages; galvanized anchor bolt sets

EGRESS

- Affordable UL924 UPS (uninterruptible power supply)
- Meets NFPA 101 for Life Safety (90min standby)
- IP20 (must be installed in a conditioned space)

LUMINAIRES

- Remote 750w, 1500w
- Stainless steel flex enclosed wiring-LED head to bottom cross arm
- Narrow, Medium, Wide & Ultra Wide Beam Angles

WIRE HARNESS

- PVC cover, color coded, #14AWG, 600V conductors
- Pole top and remote harness quick disconnects
- Cable support grip with loop

STEEL POLE

- Galvanized steel anchor base
- Manufactured to ANSI & AASHTO standards
- PE stamped drawings provided with each pole

ENCLOSURE

- Standard 75kA surge and transient protection device
- Control Pro+™ location - driver failure notification, dimming and theatrical
- Manual on-off disconnect switch
- Fusing per line
- Holds up to 12 drivers for 750w

EGRESS



FIELD PRO SYSTEM[®]

LUMINAIRES

- Integral 750w, 1500w
- Stainless steel flex enclosed wiring-LED head to die-cast driver housing
- Narrow, Medium, Wide & Ultra Wide Beam Angles

CROSS ARMS

- Galvanized tubular steel (2X4); provision for sealed wiring from fixture head to remote box
- Optional 2, 4, 6 and 8 fixture mounting arm
- Bolted 'plate to plate' cross arm to pole connection
- Optional Platform for maintenance (climbing steps included)

STEEL POLE

- Galvanized steel anchor base
- Manufactured to ANSI & AASHTO standards
- PE stamped drawings provided with each pole

SURGE PROTECTION

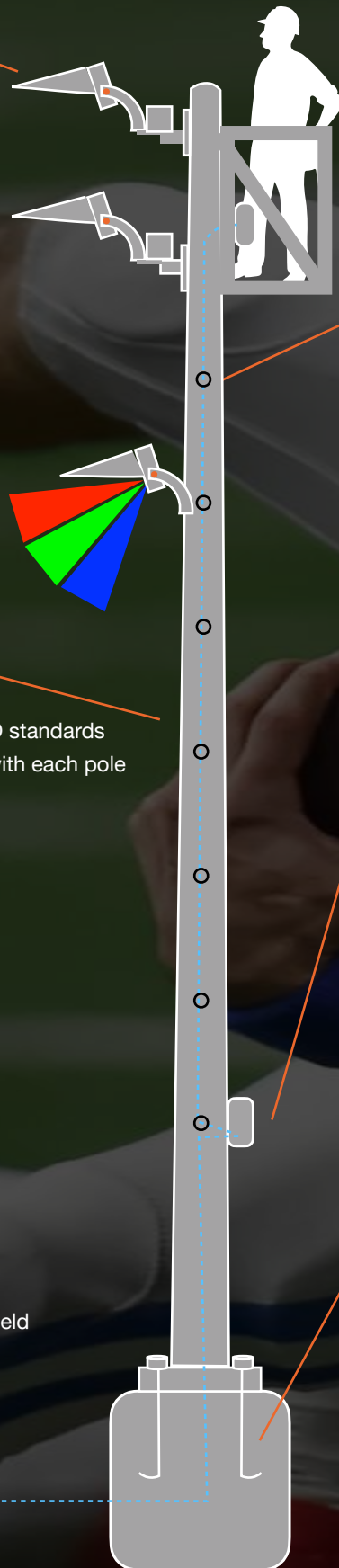
- 50kA Surge Rating
- UL 1449 Type 1
- Audible Alarm
- NEMA 6R Waterproof

ELECTRICAL LOCATION

- Standard 200kA surge and transient protection device
- Control Pro™ location - wireless switching and scheduling
- Manual on-off-auto key switch per field

CONCRETE BASE

- PE stamped foundation designs per project specs
- Rebar enforced cages; galvanized anchor bolt sets



PRECISE LIGHT CONTROL[®]

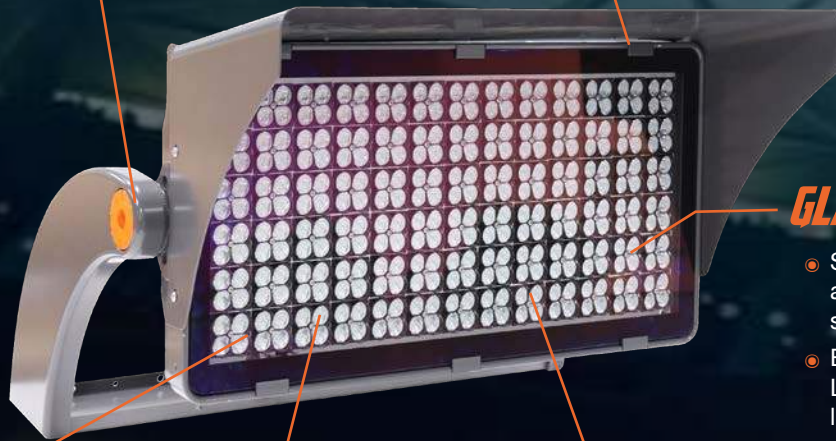
INTEGRAL

- Die-cast aluminum driver box added for integral LED system



AIMING

- Stainless steel allen-bolt and close spaced serrated grooves for precise, quick, locked-in-place aiming
- Green laser aiming insures original field designs are achieved



HEAT SINK ASSEMBLY

- Aircraft grade 6063 aluminum heat sink material
- Custom taper thin fins maximize heat convection rise
- Machined 'PCB to heat sink' surfaces maximize heat transfer with added thermal pad
- Proprietary thermal designs insure low LED junction temps of less than 80°C during high wattage operation

GLARE CONTROL

- Standard feature; light absorbing internal glare and spill control louvers
- Eliminates direct view of the LED and optic when the luminaire is tilted away from your viewing position

LENS

- Low iron substrate (water-white like) high lumen transmission glass
- Permanently sealed to protect optics and chips
- Vented, filtered optic chambers to balance pressures
- Impact resistant tempered heavy (5MM) glass for strength

OPTICS

- High temperature rated optical material for long life
- Custom made optics with multiple beam spreads
- Lowest off-site spill lighting in the sports industry
- Lowest brightness index (per sq.in.) in the industry
- Higher vertical FC's (to competitors) to meet HDTV requirements with less luminaires and KW consumption

DIODE ASSEMBLY

- Custom, high power, Tier 1 diodes (chips)
- Metal core (proprietary) printed circuit board design
- Larger numbers of diodes, all operated at significantly lower drive currents 'equal' higher reliability and longer life

CONTROL PRO[®]

Remote Scheduling System

POWER SUPPLY

- 180-525Vac input
- 24Vdc output (5A)

FUSING

- Midget fast acting 15A
- Blown fuse indicator

CONTROLLER

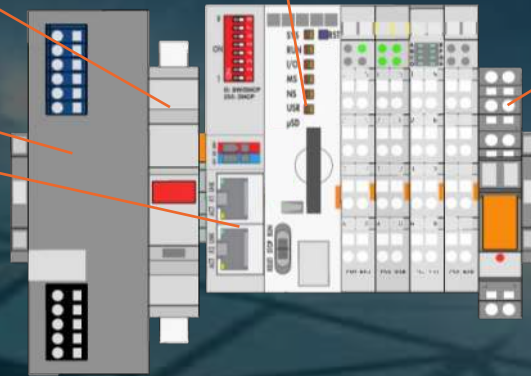
- Custom software based PLC
- Remotely managed on a VPN

SS RELAY

- Controller switches each field on/off via solid state relay
- Solid state relay controls coil to the contactors

COMMUNICATION

- Wired or wireless LAN
- Cellular based (4G)



CAPABILITIES

- Remote access via login and password through a web enabled device (tablet/phone/computer)
- Schedule field usage up to 15 years in advance
- Various security levels of access/privileges per user
- On/Off/Auto Key Switch per field for manual on/off switching
- Scheduler stores up to 1000 schedules against memory loss
- Shows estimated total energy consumption and run times to date
- All communication costs included during warranty period

CONTROL PRO+[®]

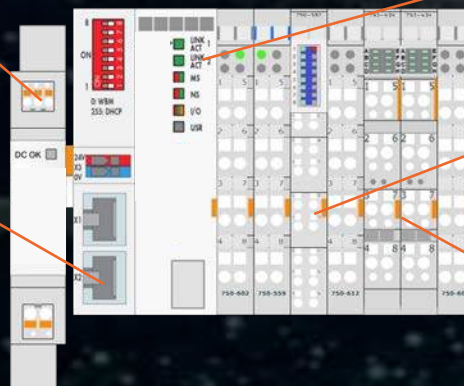
Dimming & Theatrical System

POWER SUPPLY

- 80-277Vac input
- 24Vdc output (1.5A)

COMMUNICATION

- Wired or wireless LAN
- Wireless Bluetooth



CONTROLLER

- Custom software based PLC
- Remotely managed on a VPN

DIMMING

- 0-10V Analog
- 3 stage dimming (High/Medium/Low)

MONITORING

- Notification of driver failures and power surges

CAPABILITIES

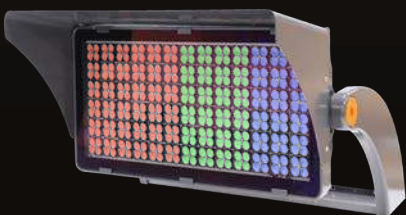
- Control Pro+™ offers everything Control Pro™ has with the additional features below:
 - Individual fixture control
 - Notification of potential driver failure via email alert
 - 3-stage dimming (High-Medium-Low) (manual switch at Control Pro location)

Standard Theatrical Effects

(5) pre-designed light shows for exceptional fan experience

SPECS

LUMINAIRE DATA



Weight (luminaire) 750w	Integral ~ 55 lbs Remote ~ 35 lbs
Weight (luminaire) 1500w	Integral ~ 80 lbs Remote ~ 60 lbs
Ingress Protection	IP 66
Material & Finish	Die cast aluminum, powder coated
UL ambient temp. Rating	50°C (122°F)

Photometric Characteristics

Project Lumen Maintenance per IES TM-21-11

L90	>78,000 hours
L80	>78,000 hours
L70	>78,000 hours
Color Temperature (CCT)	5000K or 5700K
CRI ~ 750w	75 typical. 70 minimum
CRI ~ 1500w	83 typical. 80 minimum
Lumens ~ 750w	109,000
Lumens ~ 1500w	193,000
RGB ~ Total Lumens	43,000
Lumens, Red	18,000
Lumens, Green	21,000
Lumens, Blue	6,600

REMOTE ELECTRICAL ENCLOSURE

Surge Suppression : Type 1, 75kA per line to include grounding wire

Rotary Disconnect Switch : Red handle for easy identification

Fusing: Each line is fused with 15A midget fast acting fuse

Quick Disconnects: AC, DC & Controls wires utilize quick disconnects

Wire Way: Our enclosures utilize panel building methods that provide clean aesthetics

Drivers: 60" can hold 12 drivers and 32" can hold 6 drivers

Our enclosures are made in the USA



2100 Chespark Drive
Gastonia, NC 28052
Phone: (800) 674-6058

Email: sales@psl-sports.com
Web: www.psl-sports.com