

NOTICE:
 DRAWINGS, SPECIFICATIONS AND OTHER DOCUMENTS OR PORTIONS THEREOF, INCLUDING THOSE IN ELECTRONIC FORM, PREPARED BY BILLINGSLEY/ARCHITECTURE AND ITS CONSULTANTS ARE INSTRUMENTS OF SERVICES FOR THE USE SOLELY WITH RESPECT TO THIS PROJECT. BILLINGSLEY/ARCHITECTURE AND ITS CONSULTANTS SHALL BE DEEMED THE AUTHORS AND OWNERS OF THEIR RESPECTIVE INSTRUMENTS OF SERVICE AND SHALL RETAIN ALL COMMON LAW, STATUTORY AND OTHER RESERVED RIGHTS, INCLUDING COPYRIGHTS.

- NOTES:**
- 1) GENERAL CONTRACTOR SHALL FIELD VERIFY ALL EXISTING DIMENSIONS, DETAILS, AND CONDITIONS. NOTIFY ARCHITECT OF ANY DISCREPANCIES BETWEEN EXISTING DIMENSIONS, DETAIL AND CONDITIONS AND THOSE SHOWN ON CONTRACT DOCUMENTS PRIOR TO STARTING AND WORK AFFECTED BY OR INVOLVING THESE DISCREPANCIES. INITIATING WORK SHALL BE DEEMED AS ACCEPTANCE BY CONTRACTOR OF EXISTING CONDITIONS AND MODIFICATIONS IF REQUIRED SHALL BE APPROVED BY THE ARCHITECT AND BE MADE AT THE CONTRACTOR'S EXPENSE.
 - 2) WHERE PLUMBING OR ELECTRICAL ITEMS ARE REMOVED, REMOVE ALL PIPING, CONDUIT, RACEWAY, WIRING, ETC. ASSOCIATED WITH THE ITEM BACK TO ITS SOURCE WHEN POSSIBLE.
 - 3) REMOVE EXISTING CEILING WHERE NEW CEILINGS ARE SPECIFIED. THIS INCLUDES LIGHT FIXTURES, DIFFUSERS, & GRILLS.
 - 4) REMOVE EXISTING SLAB & FINISHES AS REQ'D FOR NEW PLUMBING REQUIREMENTS.
 - 5) REMOVE ALL EXISTING FINISHES & CONSTRUCTION AS REQUIRED FOR PROPER INSTALLATION OF NEW REQUIRED CONSTRUCTION MATERIALS AND FINISHES.

WALL LEGEND

- EXISTING STRUCTURE TO REMAIN
- - - - - EXISTING STRUCTURE TO BE REMOVED

BILLINGSLEY
 ARCHITECTURE

Planning / Architecture / Interiors
 Republic Centre - Suite 800 - 633 Chestnut Street - Chattanooga, Tennessee - 37450
 (423) 752-0030 · billich.com

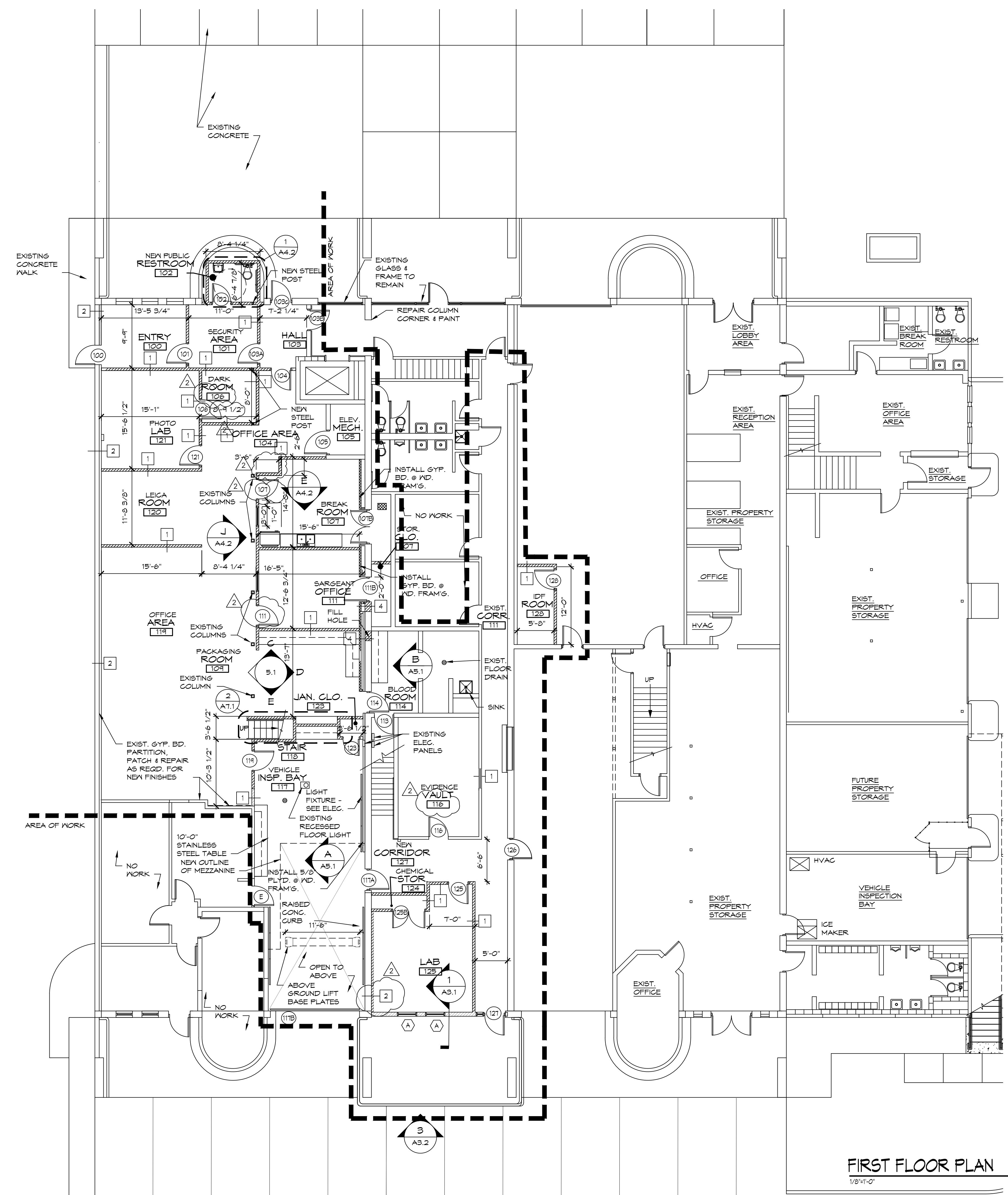
**CHATTANOOGA POLICE CRIME SCENE UNIT
 RENOVATION P-20-003-201**

ANNEX FACILITY
 3204 AMNICOLA HIGHWAY
 CHATTANOOGA, TENNESSEE



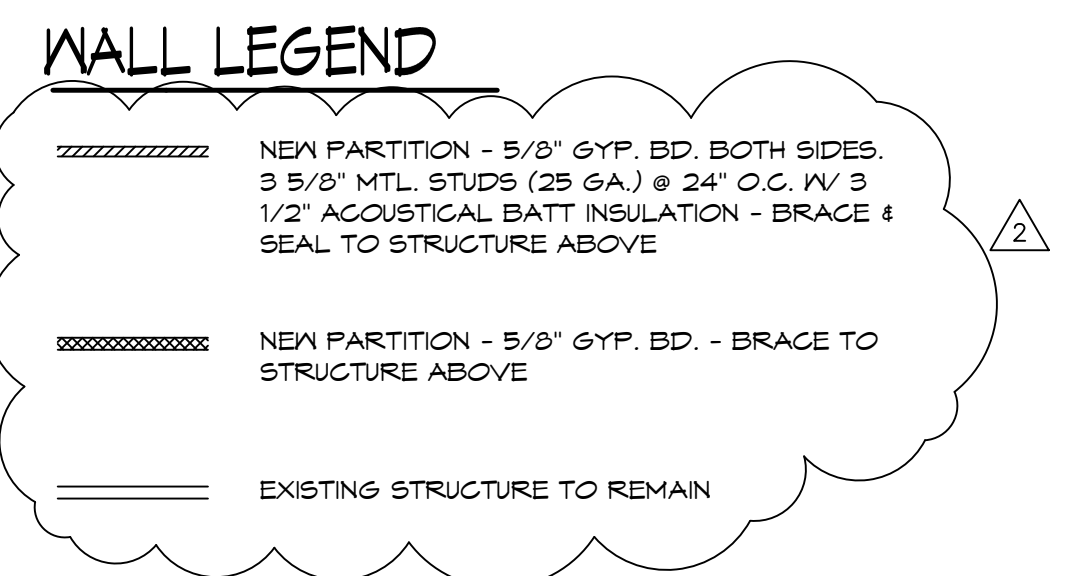
**1ST FLOOR
 DEMOLITION
 PLAN**

06/22/2020
 20-15
 LM/JCT

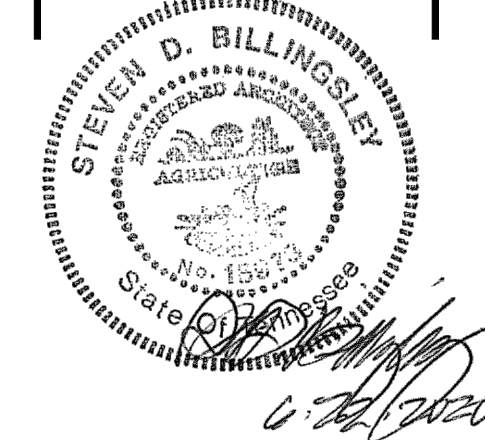


NOTICE:
 DRAWINGS, SPECIFICATIONS AND OTHER DOCUMENTS OR PORTIONS THEREOF, INCLUDING THOSE IN ELECTRONIC FORM, PREPARED BY BILLINGSLEY/ARCHITECTURE AND ITS CONSULTANTS ARE INSTRUMENTS OF SERVICES FOR THE USE SOLELY WITH RESPECT TO THIS PROJECT. BILLINGSLEY/ARCHITECTURE AND ITS CONSULTANTS SHALL BE DEEMED THE AUTHORS AND OWNERS OF THEIR RESPECTIVE INSTRUMENTS OF SERVICE AND SHALL RETAIN ALL COMMON LAW, STATUTORY AND OTHER RESERVED RIGHTS, INCLUDING COPYRIGHTS.

NOTES:
 1) GENERAL CONTRACTOR SHALL FIELD VERIFY ALL EXISTING DIMENSIONS, DETAILS, AND CONDITIONS. NOTIFY ARCHITECT OF ANY DISCREPANCIES BETWEEN EXISTING DIMENSIONS, DETAIL AND CONDITIONS AND THOSE SHOWN ON CONTRACT DOCUMENTS PRIOR TO STARTING AND WORK AFFECTED BY OR INVOLVING THESE DISCREPANCIES. INITIATING WORK SHALL BE DEEMED AS ACCEPTANCE BY CONTRACTOR OF EXISTING CONDITIONS AND MODIFICATIONS IF REQUIRED SHALL BE APPROVED BY THE ARCHITECT AND BE MADE AT THE CONTRACTOR'S EXPENSE.
 2) PROVIDE WOOD BLOCKING IN STUD WALL CAVITIES FOR MOUNTING DOOR HARDWARE, TOILET ACCESSORIES, CABINETS, RUNNING TRIM, ETC.....
 3) RATED WALL SHALL BE LABELED IN THE CEILING CAVITY W/ RED PAINT IDENTIFYING THEM AS RATED PARTITIONS, THEIR RATING & THE WORDS 'NO UNPROTECTED PENETRATIONS'.
 4) ALL EQUIPMENT SHALL BE FURNISHED AND INSTALLED BY OWNER UNLESS NOTED OTHERWISE.



FIRST FLOOR PLAN
 1/8"=1'-0"
 NORTH

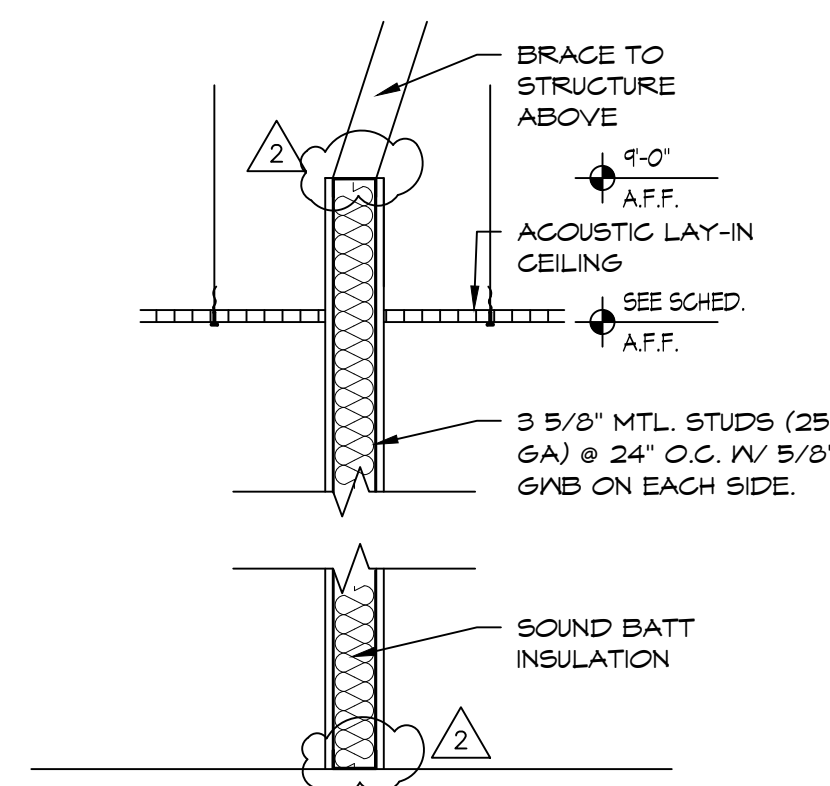


FINISH MATERIALS & LEGEND					
KEY	DESCRIPTION	MANUFACTURER	PRODUCT INFORMATION	SIZE/FINISH	NOTES
WALLS					
P-1	CEILING PAINT	SHERWIN-WILLIAMS	COLOR - 847007 CEILING BRITE WHITE FLAT	FLAT	-
P-2	WALL PAINT	SHERWIN-WILLIAMS	COLOR - 8476253 ICE CUBE	SATIN	-
P-3	WALL PAINT	SHERWIN-WILLIAMS	COLOR - 846921 NOTABLE HUE	SATIN	-
P-4	WALL PAINT	SHERWIN-WILLIAMS	COLOR - 847036 ACCES GRAY	SATIN	-
P-5	WALL PAINT	SHERWIN-WILLIAMS	COLOR - 847066 GRAY MATTERS	GLOSS	-
RB-1	RUBBER BASE	FLEXCO	#25 LIGHT GRAY	4"	-
MT-1	MEDICAL FLOORING	ARMSTRONG	MEDITECH #8841H SILVER GRAY	SHEET	-
LVT-1	LUXURY VINYL TILE	ADORE/NATURELLE	WIDE PLANKS #DW-1402 FADED BARN/IDE	12" X 314"	1/3 STAGGERED INSTALL
VGT-1	VINYL COMPOSITION TILE	AZROCK	V-210 OATS	12" X 12"	CHECKERBOARD 24" X 24" CENTERED
T-1	PORCELAIN FLOOR TILE	PORTOBELLO AMERICA	TRILLO OLIVE 12X24 NAT BOLD #1825ET	12" X 24"	-
WT-1	WALL TILE	PORTOBELLO AMERICA	KREA VANILLA 4X16 GLOSSY BOLD #2439SE	4" X 16"	SCHLUTER TRANSITION AT FLR & WALL
G-1	GROUT	TEC	#425 SABLE	1/8" GROUT JOINT	-
RST	RUBBER STAIR TREAD	FLEXCO	#25 LIGHT GRAY, SERIES 120	-	-
FRP	FIBERGLASS REINFORCED PANEL	NUDO	NU-FIBER SKIN #LP-F3, COLOR: KAHAKI #203	PEBBLED	-
PL-1	PLASTIC LAMINATE (DOORS & DRAWERS)	NILSONART	#1854-39 NATURAL RIFT	-	-
PL-2	PLASTIC LAMINATE (BREAK RM COUNTER)	NILSONART	#4814-60 TUNGSTEN EV	-	-
PL-3	PLASTIC LAMINATE (CAB. INTERIORS)	NILSONART	#421-60 LINEN	-	-
SS-1	SOLID SURFACE	SAMSUNG	STARON, #SC415, SANDED CLAY	-	-

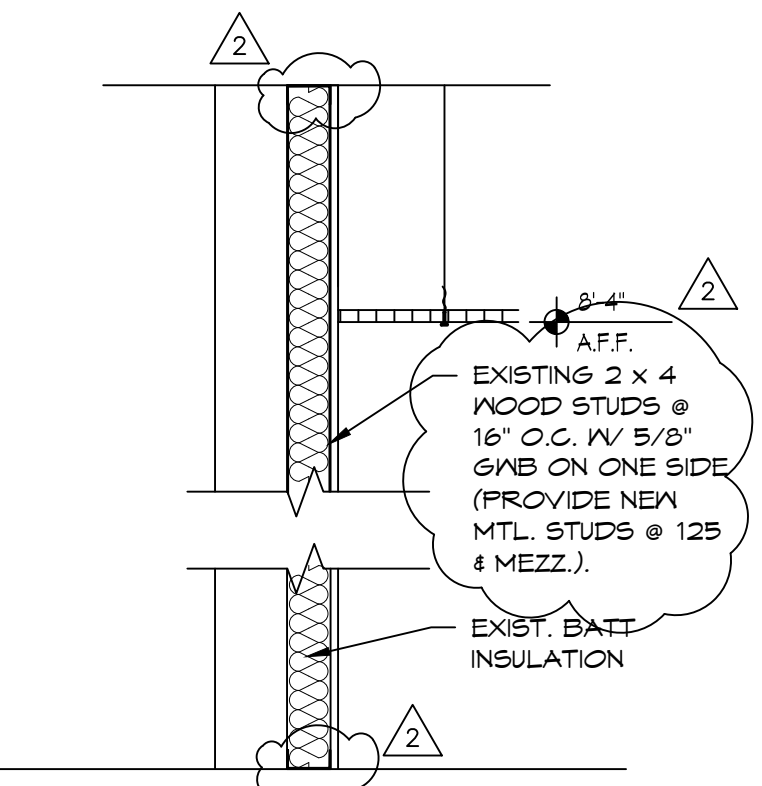
NOTE: AT PORCELAIN TILE INSTALLATION INSTALL SCHLUTER: FLOOR TO WALL- DILEX - AHK-DB, WALL OUTSITED CORNERS - RONDEC - DB

FINISH SCHEDULE										
NO.	SPACE NAME	FLOOR MATERIAL	BASE MATERIAL	WALLS				CEILING		REMARKS
				NORTH MATL.	SOUTH MATL.	EAST MATL.	WEST MATL.	HT.	MATL.	
100	ENTRY	LVT-1	RB-1	P-2	P-2	P-2	P-3	8'-4"	A.C.T.	-
101	SECURITY AREA	LVT-1	RB-1	P-3	P-2	P-2	P-2	8'-4"	A.C.T.	-
102	PUBLIC RESTROOM	T-1	TB-1	WT-1	P-2	WT-1	P-2	8'-0"	A.C.T.	-
103	HALL	LVT-1	RB-1	P-2	P-2	P-2	P-3	8'-4"	A.C.T.	-
104	OFFICE AREA	LVT-1	RB-1	P-2	P-3	P-2	P-2	8'-0"	A.C.T.	-
105	ELEVATOR MECH.	-	-	-	-	-	-	-	-	NO WORK
106	DARK ROOM	LVT-1	RB-1	P-2	P-2	P-2	P-2	8'-4"	A.C.T.	-
107	BREAK ROOM	LVT-1	RB-1	P-2	P-2	P-4	P-2	OPEN	-	NO WORK
108	PHOTO LAB	LVT-1	RB-1	P-3	P-2	P-2	P-2	8'-4"	A.C.T.	-
109	LECA ROOM	LVT-1	RB-1	P-2	P-2	-	P-2	8'-8"	A.C.T.	-
110	OFFICE AREA	LVT-1	RB-1	P-2	P-2	P-3	P-2	8'-8"	A.C.T.	-
111	SERGEANT OFFICE	LVT-1	RB-1	P-2	P-2	P-4	P-2	8'-4"	A.C.T.	-
112	PACKAGING ROOM	LVT-1	RB-1	P-2	P-2	P-4	P-3	8'-8"	ACT	-
113	STORAGE CLOSET	LVT-1	RB-1	P-2	P-2	P-2	P-2	OPEN	P-1	-
114	BLOOD ROOM	MT-1	RB-1	P-2	P-2	P-2	P-2	8'-4"	ACT	-
115	STAIR	RT-1	RB-1	P-2	P-2	P-2	P-2	OPEN	-	-
116	EVIDENCE VAULT	LVT-1	RB-1	P-2	P-2	P-2	P-2	OPEN	A.C.T.	-
117	VEHICLE HOLD BAY	CONCRETE	RB-1	P-2	P-2	P-2	P-2	OPEN TO ROOF DECK	P-1	-
123	JANITOR CLOSET	CONCRETE	-	P-2	P-2	P-2	P-2	-	A.C.T.	MATCH EXIST. CEILING HEIGHT
124	CHEMICAL STORAGE	LVT-1	RB-1	P-2	P-2	P-2	P-2	8'-4"	A.C.T.	MAX. CLG. HEIGHT POSSIBLE
125	LAB	LVT-1	RB-1	P-2	P-2	P-2	P-3	8'-4"	A.C.T.	MAX. CLG. HEIGHT POSSIBLE
126	EXIST. CORR.	LVT-1	RB-1	P-2	P-2	P-2	P-2	-	-	NEW LVT OVER EXIST. FNT. WALLS & TRIM
127	NEW CORRIDOR	LVT-1	RB-1	P-2	P-2	P-2	P-2	8'-4"	A.C.T.	MAX. CEILING HEIGHT POSSIBLE
128	IDF ROOM	CONCRETE	RB-1	P-2	P-2	P-2	P-2	OPEN	-	-

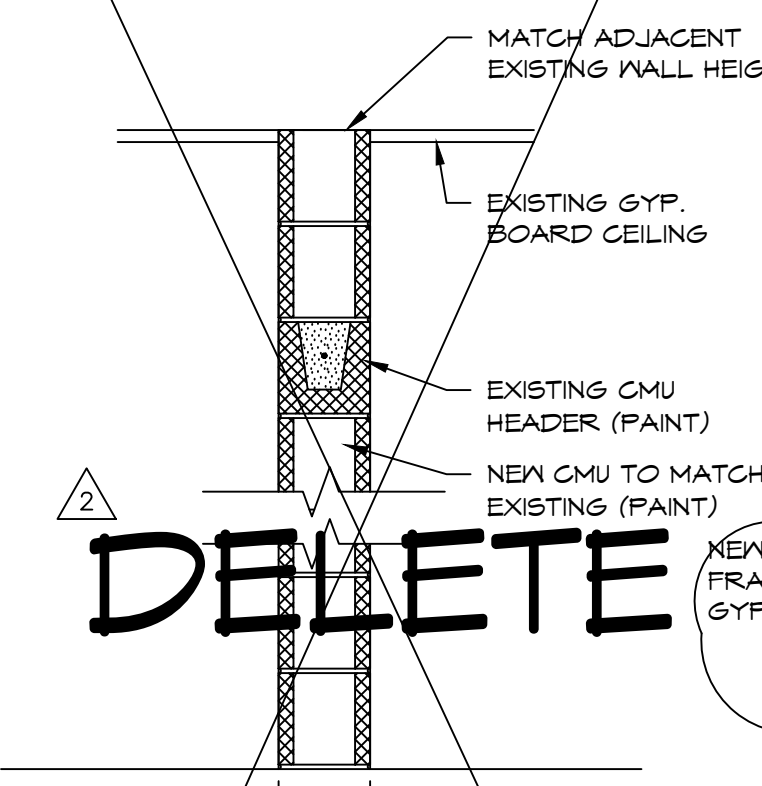
- NOTES:**
- SEE FLOOR PLAN TO DIFFERENTIATE EXISTING WALL MATERIALS FROM NEW.
 - EXISTING WALL MATERIALS TO RECEIVE A NEW FINISH SHALL BE PROPERLY REPAIRED, PATCHED, MADE SMOOTH OR READY TO RECEIVE THE NEW FINISH PRIOR TO ITS APPLICATION.
 - NEW LVT & VGT MAY BE APPLIED OVER THE EXISTING FLOORING, PROVIDED THE EXISTING FLOOR IS SMOOTH AND PROPERLY BONDED TO THE SUBSTRATE.
 - WHEN INSTALLING NEW A.C.T. WHERE A.C.T. PREVIOUSLY EXISTED, INSTALL NEW AT SAME HEIGHT A.F.F. AS PREVIOUS. WHEN INSTALLING NEW A.C.T. AT LOCATION THAT HAS NOT HAD A CEILING, INSTALL AS HIGH AS POSSIBLE.



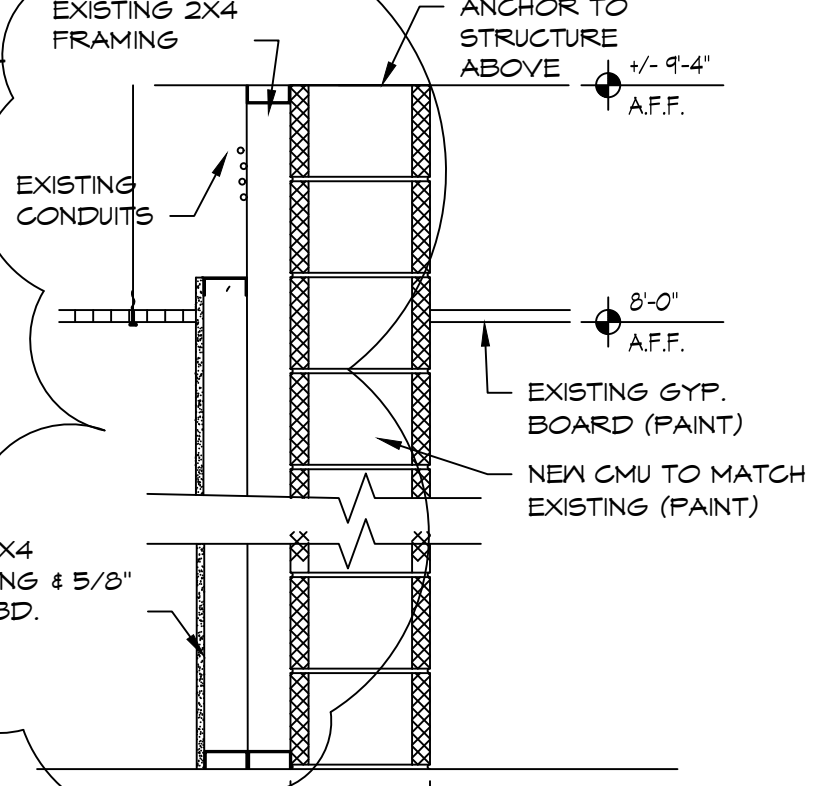
1 TYPICAL WALL SECTION
3/4"x1'-0"



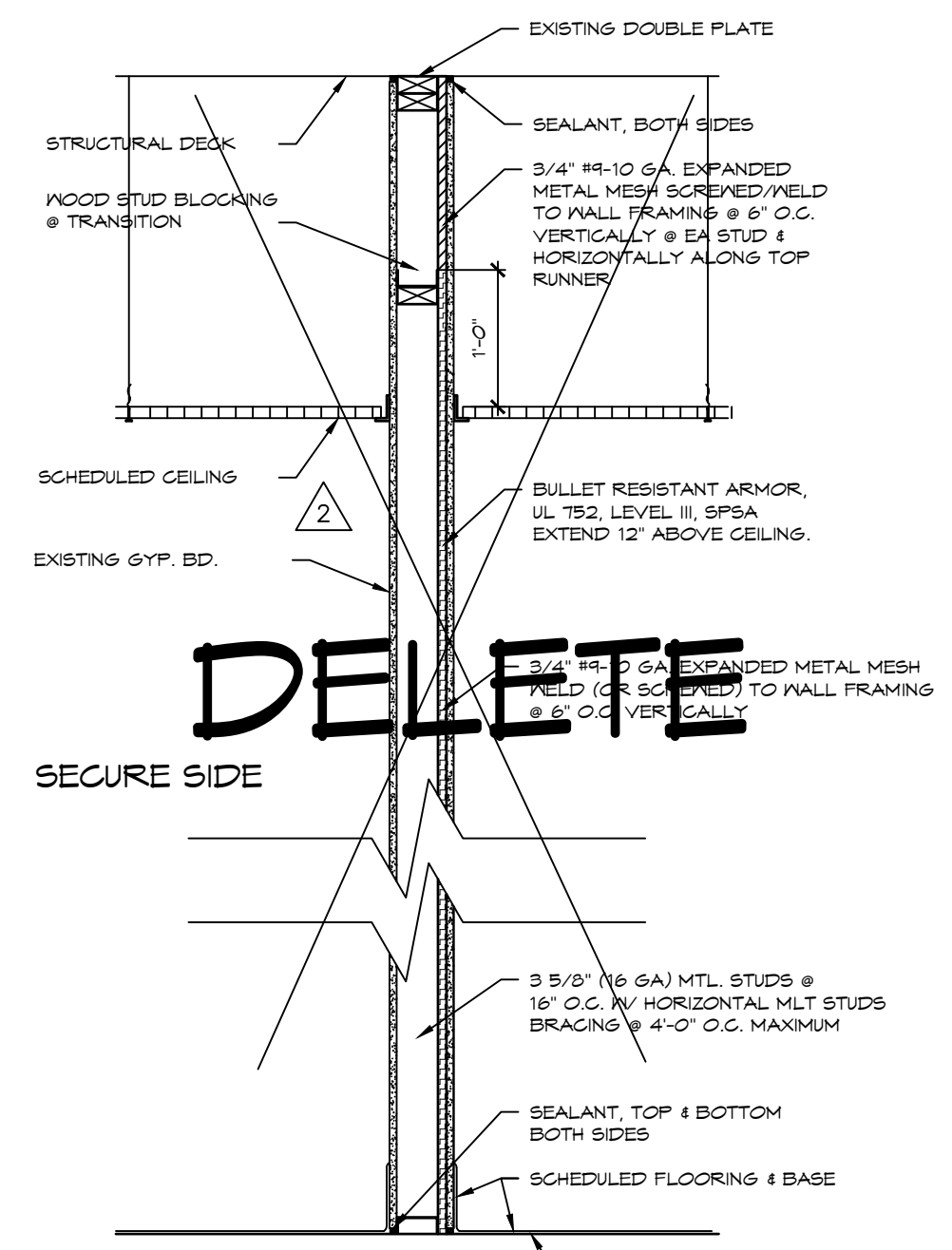
2 TYPICAL WALL SECTION
3/4"x1'-0"



3 TYPICAL WALL SECTION
3/4"x1'-0"



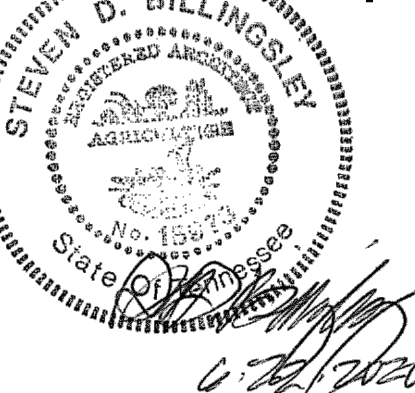
4 TYPICAL WALL SECTION
3/4"x1'-0"



5 TYPICAL WALL SECTION
3/4"x1'-0"

BILLINGSLEY
ARCHITECTURE
Planning / Architecture / Interiors
Republic Centre - Suite 800 - 633 Chestnut Street - Chattanooga, Tennessee - 37450
(423) 752-0030
billarch.com

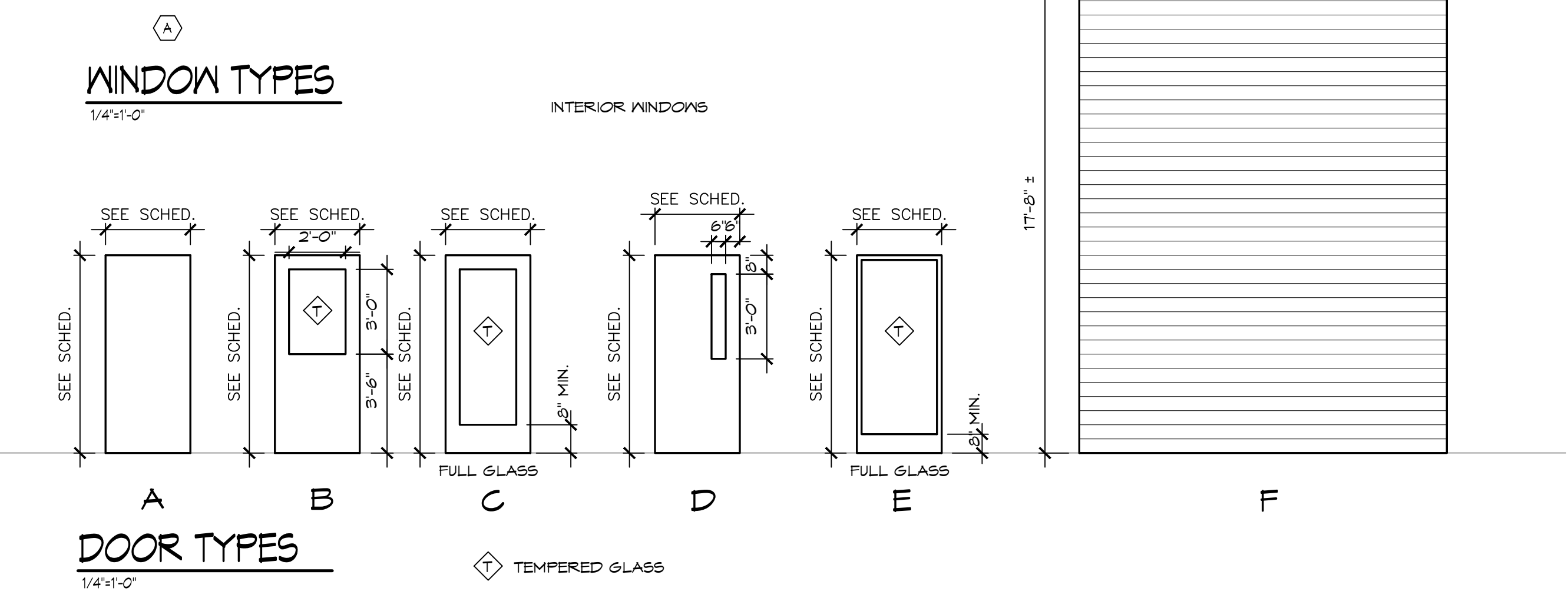
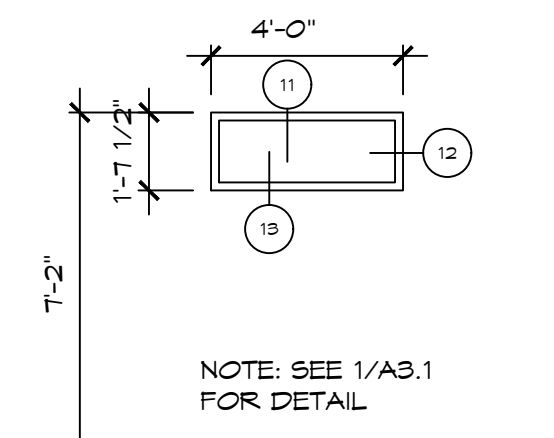
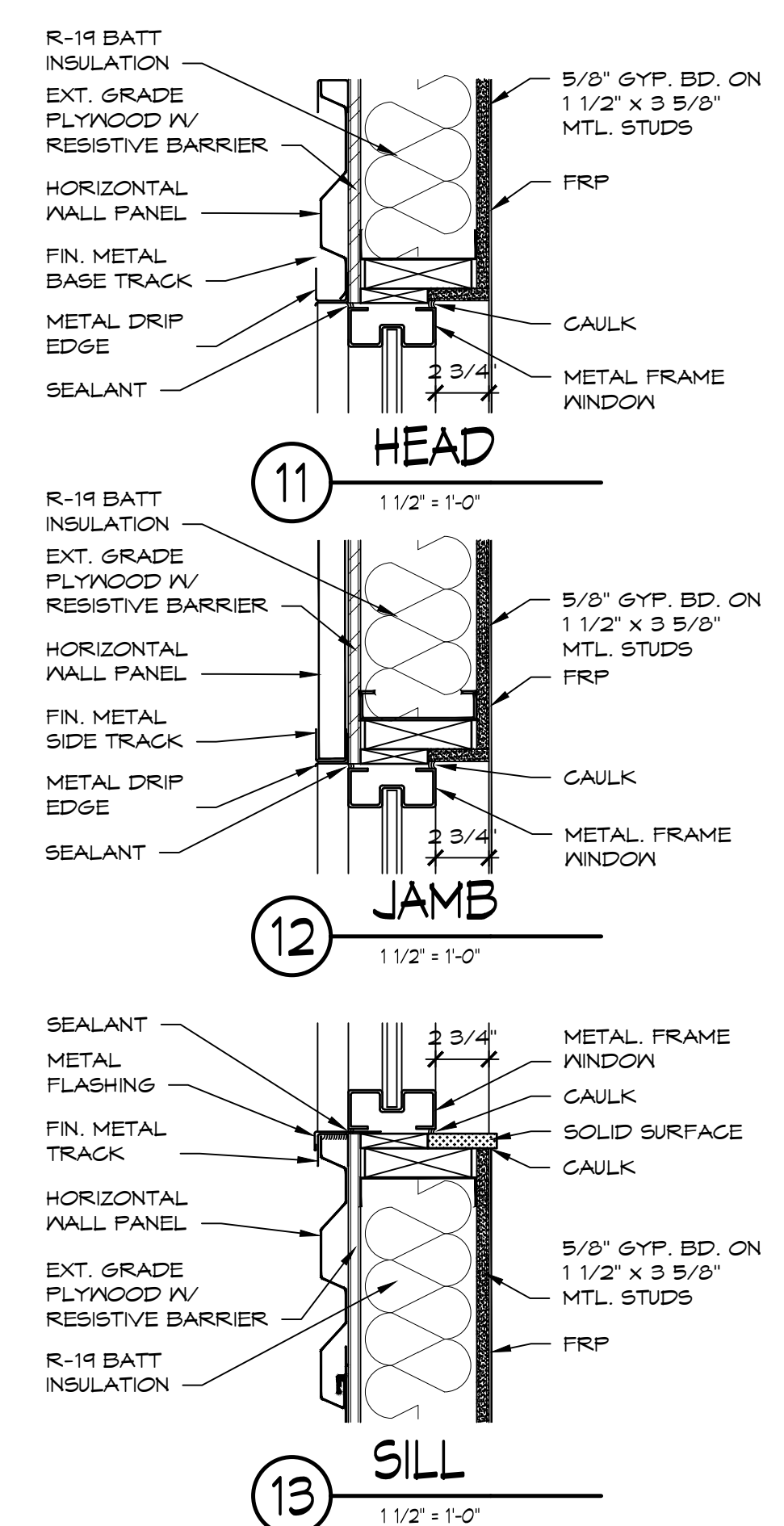
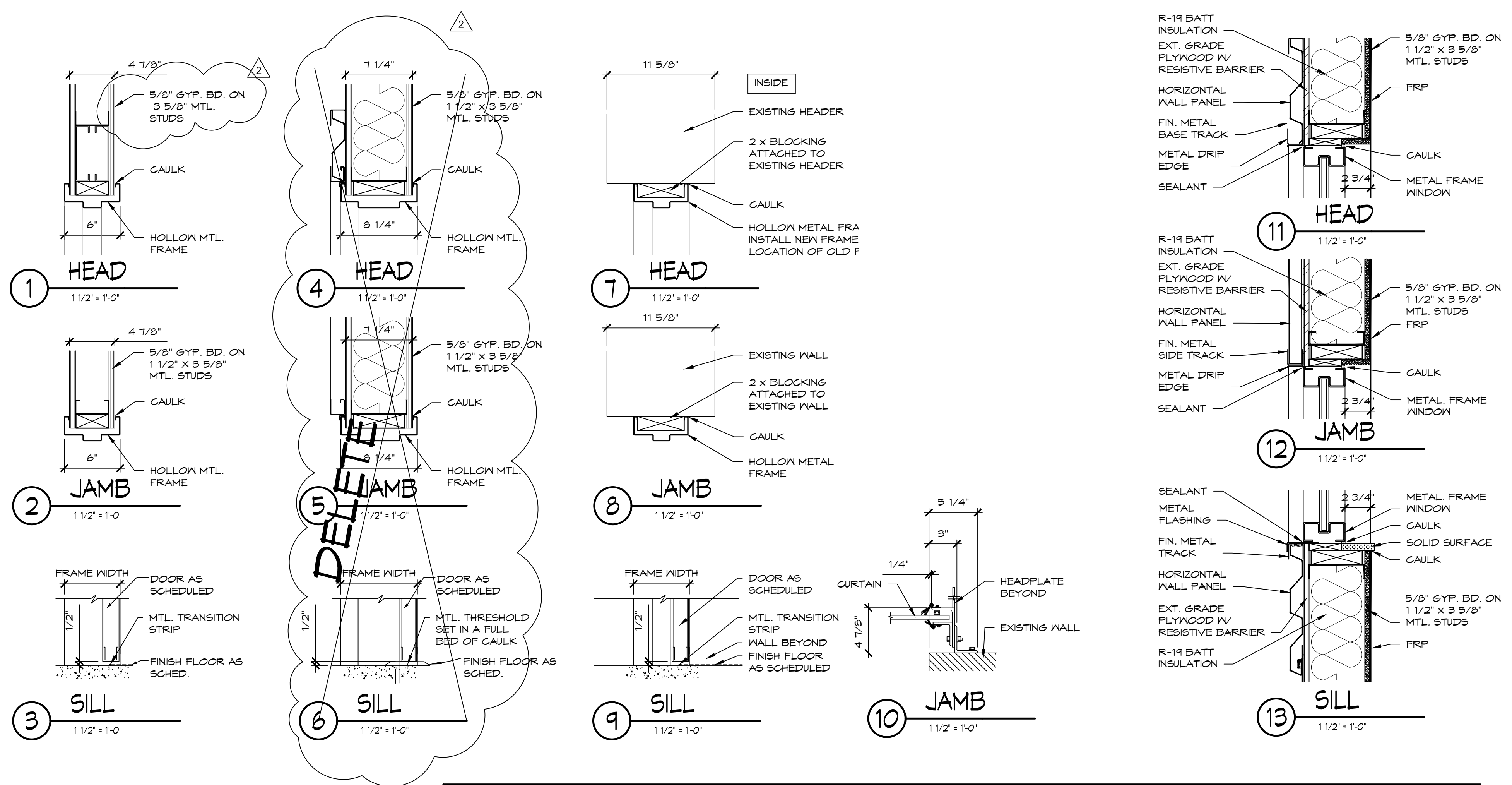
CHATTANOOGA POLICE CRIME SCENE UNIT
RENOVATION P-20-003-201
ANNEX FACILITY
3204 AMNICOLA HIGHWAY
CHATTANOOGA, TENNESSEE



FINISH SCHED. AND WALL SECTIONS

06/22/2020
20-15
LJM, JCT

A2.2



DOOR AND FRAME SCHEDULE													
DOOR					FRAME					RATING	H/VE SET	REMARKS	
NUMBER	SIZE	THICKNESS	MATERIAL	TYPE	OPNG. SIZE	MATL.	TYPE	HEAD	JAMB				SILL
100	3'-0" x T'-0"	1 3/4"	H.M./GL.	B	3'-0" x T'-0"	EXIST.	EXIST.	-	-	-	-	1	EXISTING METAL FRAME TO BE PAINTED. BOND TO EXISTING FRAME AS REQUIRED. NEW DOOR & HRDVE.
101	3'-0" x T'-0"	1 3/4"	ND/GL.	D	3'-0" x T'-0"	H.M.	A	1	2	3	-	2	
102	3'-0" x T'-0"	1 3/4"	S.G. ND.	A	3'-0" x T'-0"	H.M.	A	1	2	3	-	3	
103A	3'-0" x T'-0"	1 3/4"	ND/GL.	D	3'-0" x T'-0"	H.M.	A	1	2	3	-	4	
103B	EXISTING	-	-	-	-	-	-	-	-	-	-	4	PAINT EXISTING DOOR & FRAME
104	3'-0" x T'-0"	1 3/4"	S.G. ND/GL.	D	3'-0" x T'-0"	H.M.	A	1	2	3	-	4	
105	EXISTING	-	-	-	EXISTING	-	-	-	-	-	-	5	PAINT EXISTING DOOR FRAME
106	3'-0" x T'-0"	1 3/4"	ND/S.G.	A	3'-0" x T'-0"	H.M.	A	1	2	3	-	6	
107	3'-0" x T'-0"	1 3/4"	S.G. ND/GL.	D	3'-0" x T'-0"	H.M.	A	1	2	3	-	7	
107B	3'-0" x T'-0"	1 3/4"	S.G. ND/GL.	D	3'-0" x T'-0"	H.M.	A	1	2	3	-	7	PAINT EXISTING DOOR FRAME
108	3'-0" x T'-0"	1 3/4"	ND/GL.	B	3'-0" x T'-0"	H.M.	A	1	2	3	-	7	
108B	3'-6" x T'-0"	1 3/4"	S.G. ND.	A	3'-6" x T'-0"	H.M.	A	7	8	9	-	8	
110	3'-0" x T'-0"	1 3/4"	ND/GL.	D	3'-0" x T'-0"	H.M.	A	1	2	3	-	10	
111	3'-0" x T'-0"	1 3/4"	ND/GL.	D	3'-0" x T'-0"	H.M.	A	1	2	3	-	6	
111B	3'-0" x T'-0"	1 3/4"	S.G. ND.	D	3'-6" x T'-0"	H.M.	A	1	2	3	-	9	
113	3'-0" x T'-0"	1 3/4"	H.M.	A	3'-0" x T'-0" EXIST.	H.M.	A	7	8	9	-	9	VERIFY THE SIZE OF EXISTING OPENING
114	3'-0" x T'-0"	1 3/4"	S.G. ND.	A	3'-0" x T'-0" EXIST.	-	-	-	-	-	-	10	
115	(2) 2'-6" x T'-0"	1 3/4"	ND/GL.	C	3'-0" x T'-0"	H.M.	A	1	2	3	-	2	
116	2'-6" x T'-0"	1 3/4"	H.M.	A	2'-6" x T'-0"	H.M.	A	1	2	3	-	10	
111A	3'-0" x T'-0"	1 3/4"	S.G. ND.	D	3'-0" x T'-0"	H.M.	A	7	8	9	-	10	
111B	14'-3" x 11'-8", VERIFY	24 GA.	MTL.	F	14'-3" x 11'-8", VERIFY	-	-	-	10	-	-	11	NEW INSULATED ROLL-UP DOOR
119	3'-0" x T'-0"	1 3/4"	ND/GL.	D	3'-0" x T'-0"	H.M.	A	1	2	3	-	8	
121	3'-0" x T'-0"	1 3/4"	S.G. ND.	A	3'-0" x T'-0"	H.M.	A	1	2	3	-	12	
122	3'-0" x T'-0"	1 3/4"	S.G. ND.	A	3'-0" x T'-0"	H.M.	A	1	2	3	-	12	
123	2'-6" x T'-0" VERIFY	1 3/4"	S.G. ND.	A	EXISTING	H.M.	A	1	2	3	-	13	NEW DOOR & HRDVE. IN EXIST. FRAME
125	3'-0" x T'-0"	1 3/4"	ND/GL.	D	3'-0" x T'-0"	H.M.	A	1	2	3	-	8	
125B	(2) 2'-6" x T'-0"	1 3/4"	S.G. ND.	A	5'-0" x T'-0"	H.M.	A	1	2	3	-	14	
126	3'-0" x T'-0"	1 3/4"	ND/GL.	D	3'-0" x T'-0"	H.M.	A	1	2	3	-	8	
127	3'-0" x T'-0"	1 3/4"	AL/GL.	E	3'-0" x T'-0"	ALUM.	A	11	12	13	-	15	
128	3'-0" x T'-0"	1 3/4"	H.M./GL.	B	3'-0" x T'-0"	H.M.	A	1	2	3	-	4	
201	3'-0" x T'-0"	1 3/4"	H.M./GL.	B	3'-0" x T'-0"	H.M.	A	1	2	3	-	6	

BILLINGSLEY
ARCHITECTURE

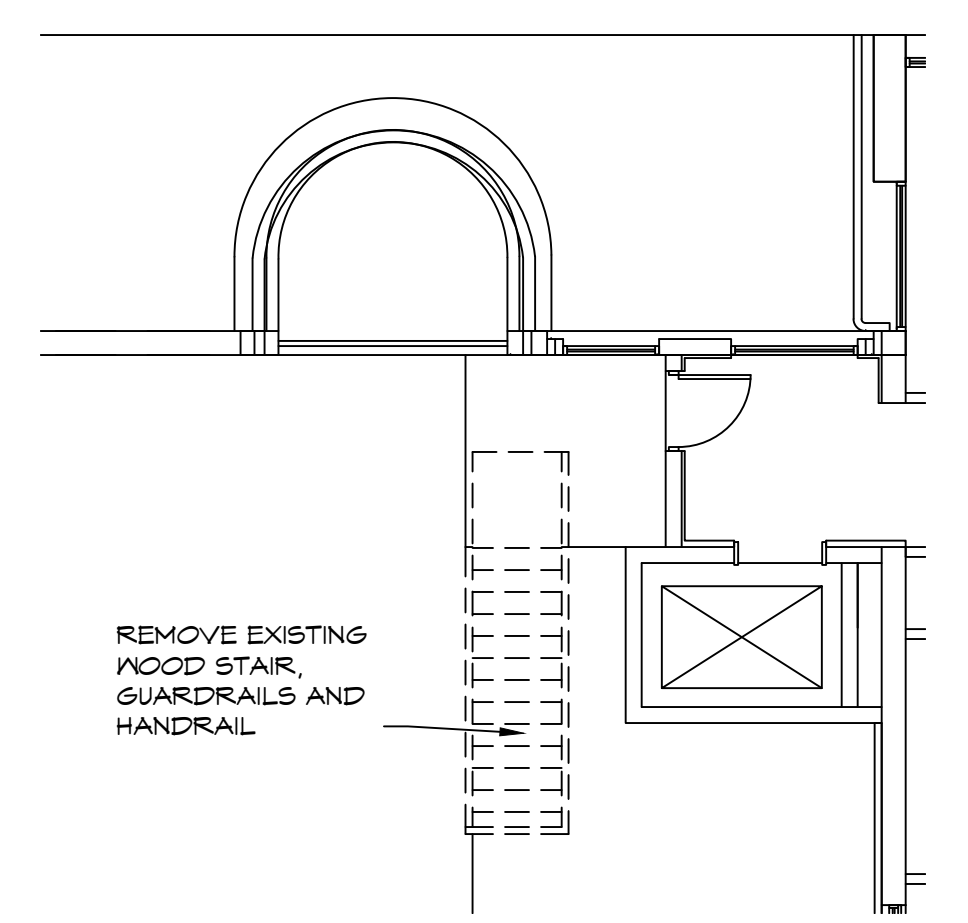
CHATTANOOGA POLICE CRIME SCENE UNIT
RENOVATION P-20-003-201



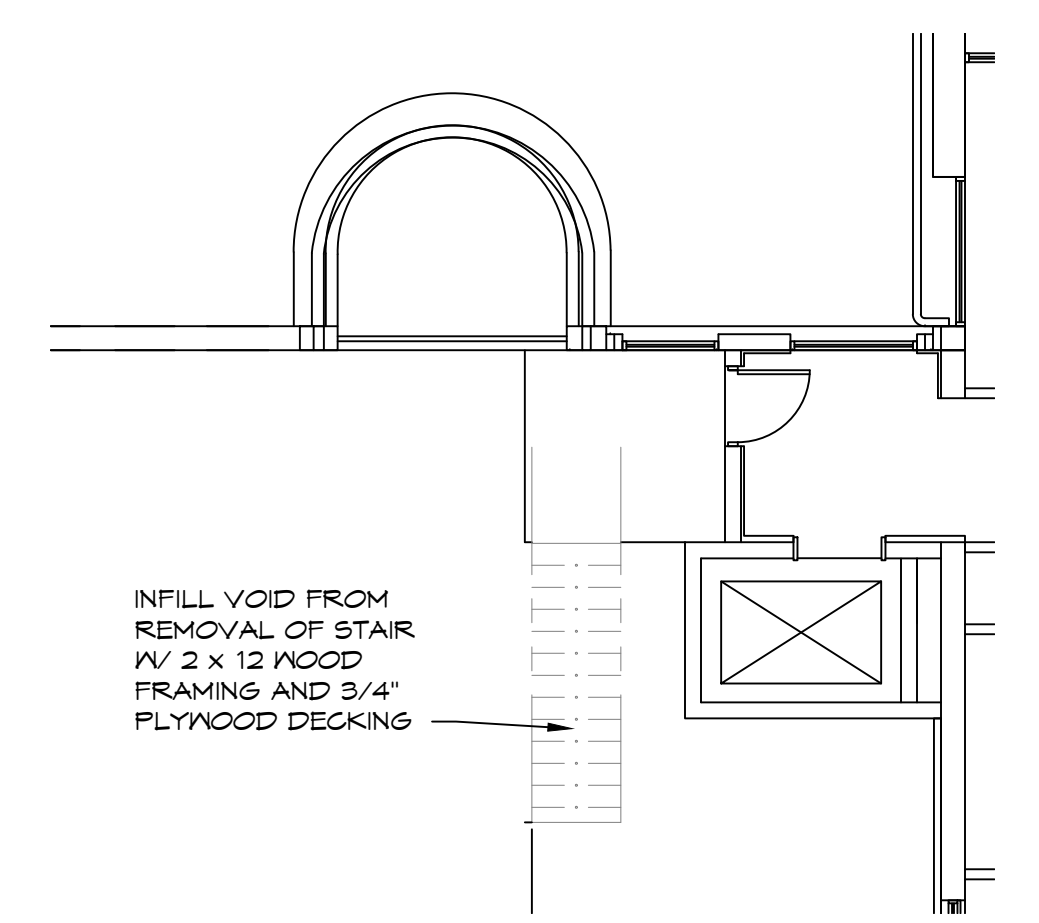
SCHEDULES & DETAILS

06/22/2020
20-15
LJM/JCT

A2.3



NORTH STAIR DEMOLITION PLAN
1/8"=1'-0" NORTH



NORTH SIDE FRAMING PLAN
1/8"=1'-0" NORTH

NOTICE:
DRAWINGS, SPECIFICATIONS AND OTHER DOCUMENTS OR PORTIONS THEREOF, INCLUDING THOSE IN ELECTRONIC FORM, PREPARED BY BILLINGSLEY ARCHITECTURE AND ITS CONSULTANTS ARE INSTRUMENTS OF SERVICES FOR THE USE SOLELY WITH RESPECT TO THIS PROJECT. BILLINGSLEY ARCHITECTURE AND ITS CONSULTANTS SHALL BE DEEMED THE AUTHORS AND OWNERS OF THEIR RESPECTIVE INSTRUMENTS OF SERVICE AND SHALL RETAIN ALL COMMON LAW, STATUTORY AND OTHER RESERVED RIGHTS, INCLUDING COPYRIGHTS.

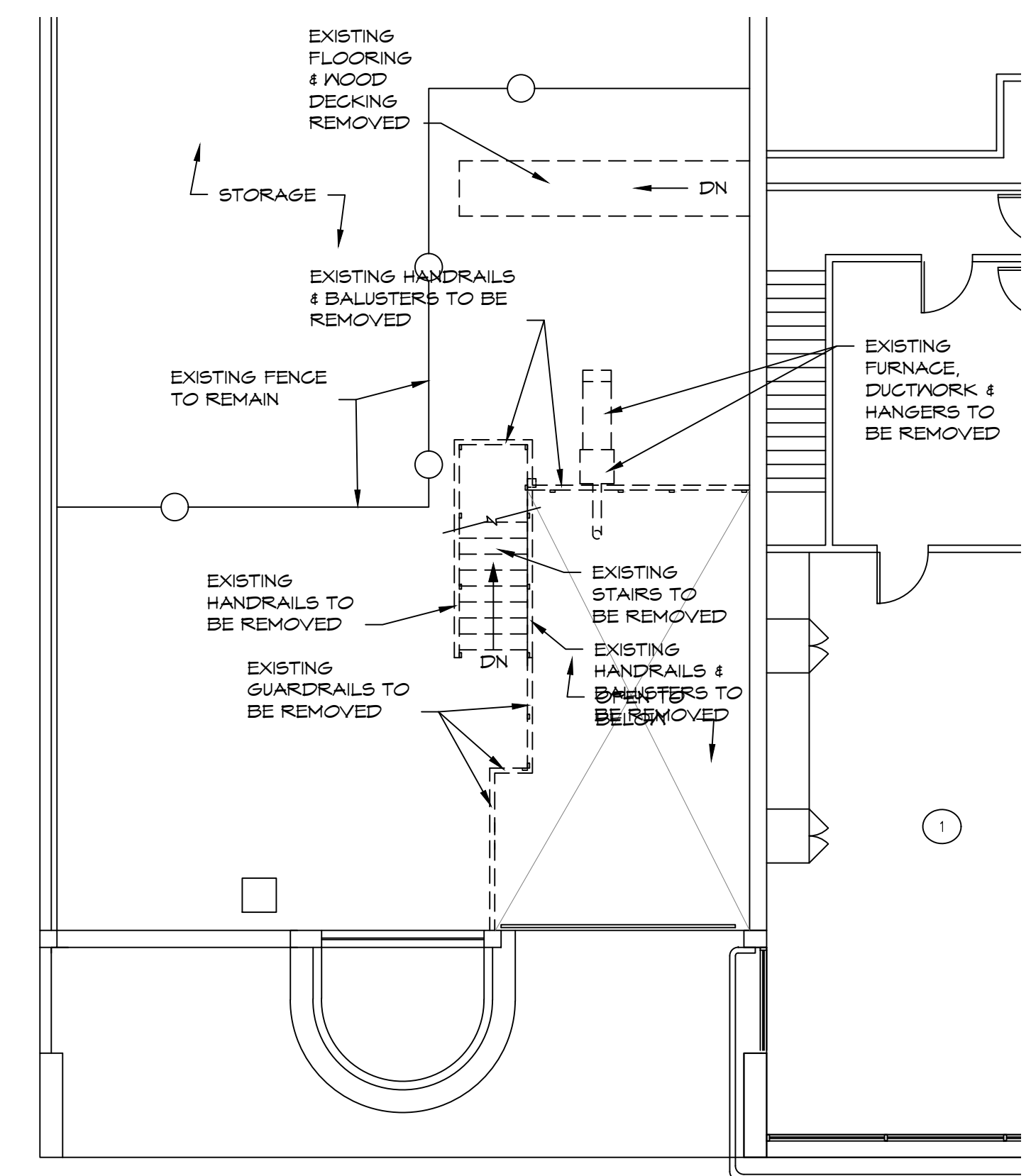
NOTE:
1. ACCESS TO AREA INSIDE THE EXISTING CHAIN LINK FENCING WILL BE VERY LIMITED AND WILL BE MONITORED. COORDINATION WITH OWNER IS REQUIRED. EXISTING FENCE IS CONNECTED TO SECURITY SYSTEM.

WALL LEGEND

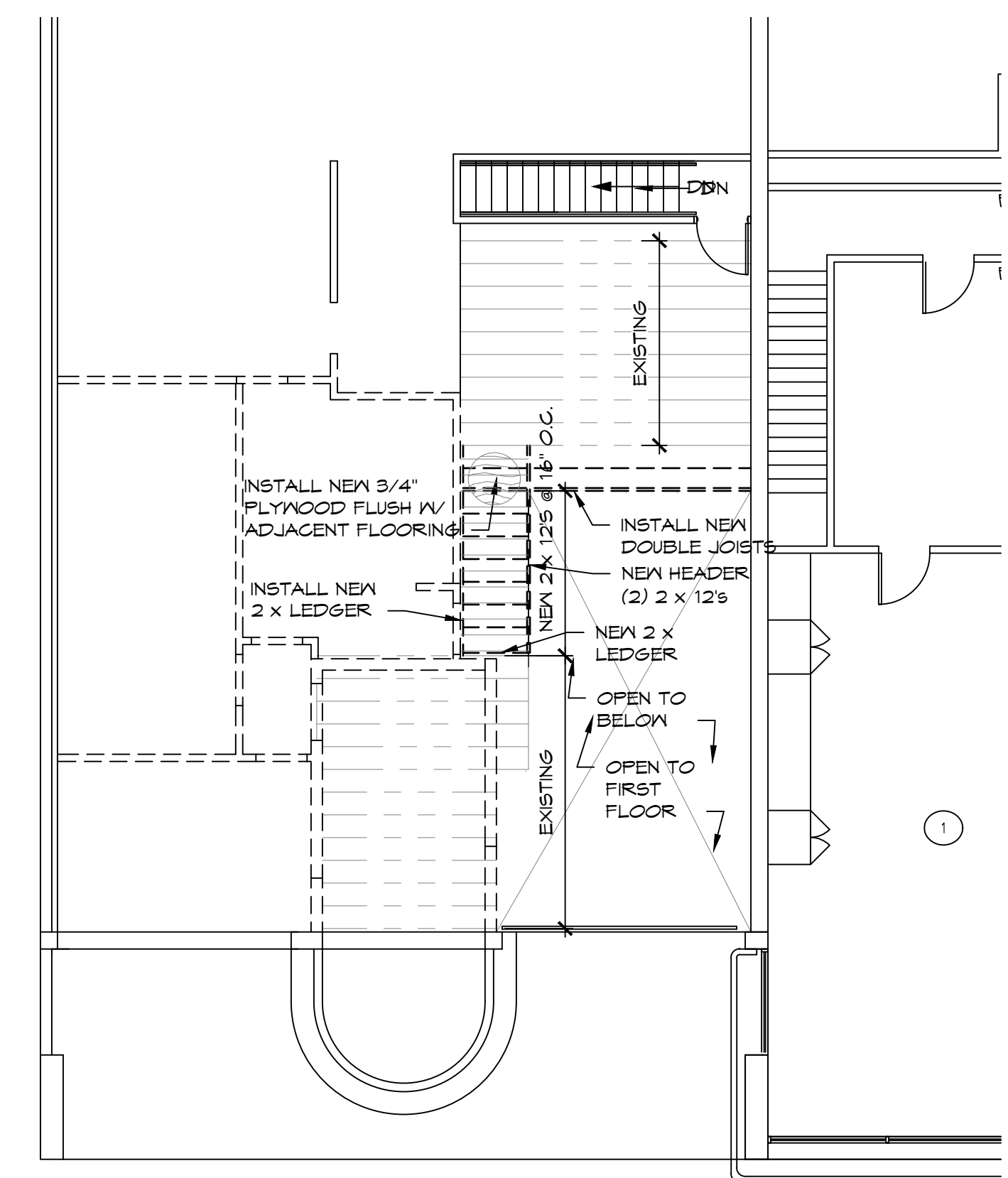
- EXISTING STRUCTURE TO BE REMOVED
- ===== EXISTING STRUCTURE TO REMAIN
- ===== NEW WALL - 5/8" GYP. BOARD EA. SIDE
2 x 4 WOOD STUDS @ 16" O.C. W/ R-11 BATT INSULATION IN STUD VOIDS. SEAL TIGHT TO BOTTOM OF ROOF DECK.

FRAMING LEGEND

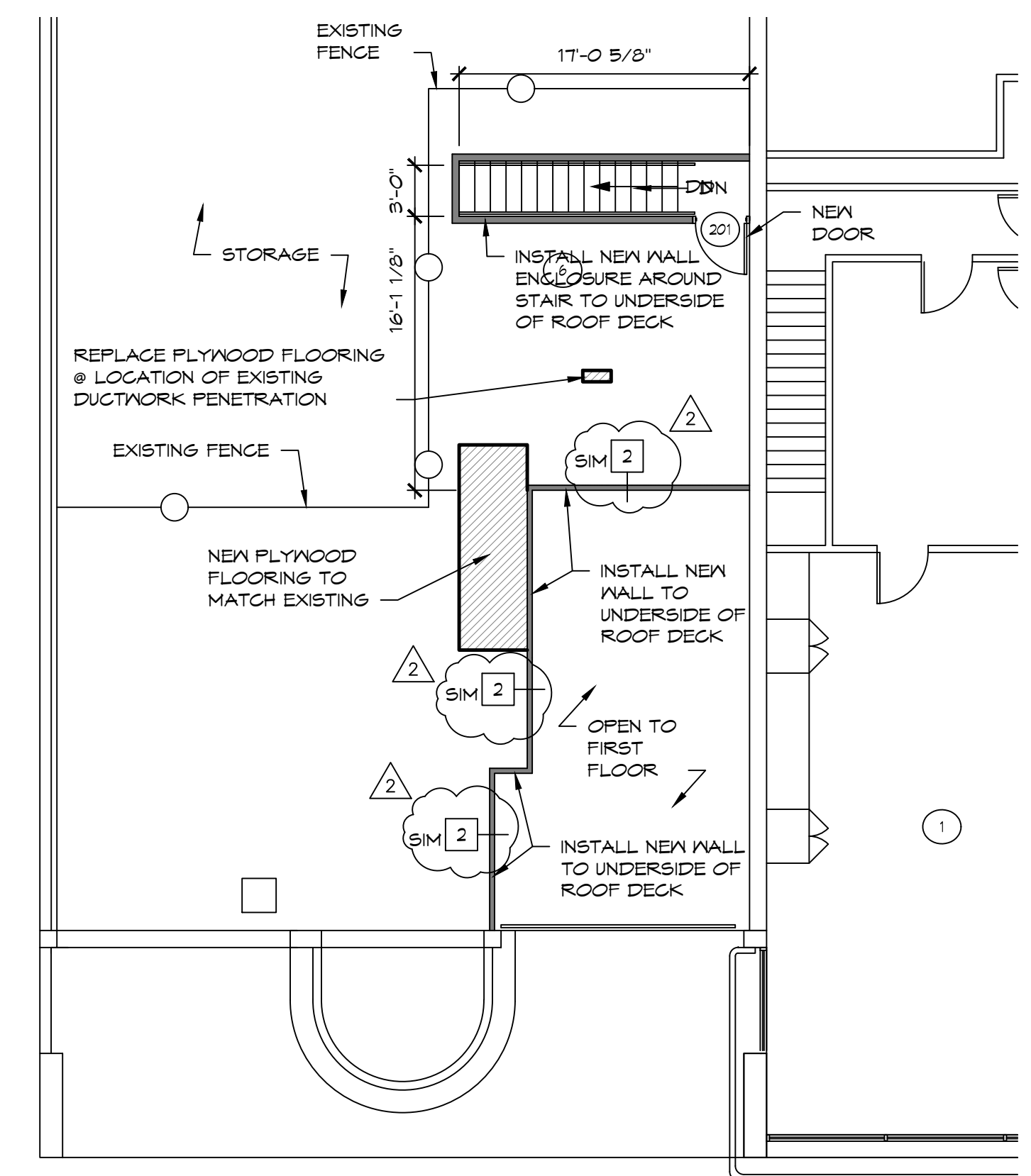
- NEW 2x JOIST
- EXISTING JOIST



MEZZANINE DEMOLITION PLAN
1/8"=1'-0" NORTH

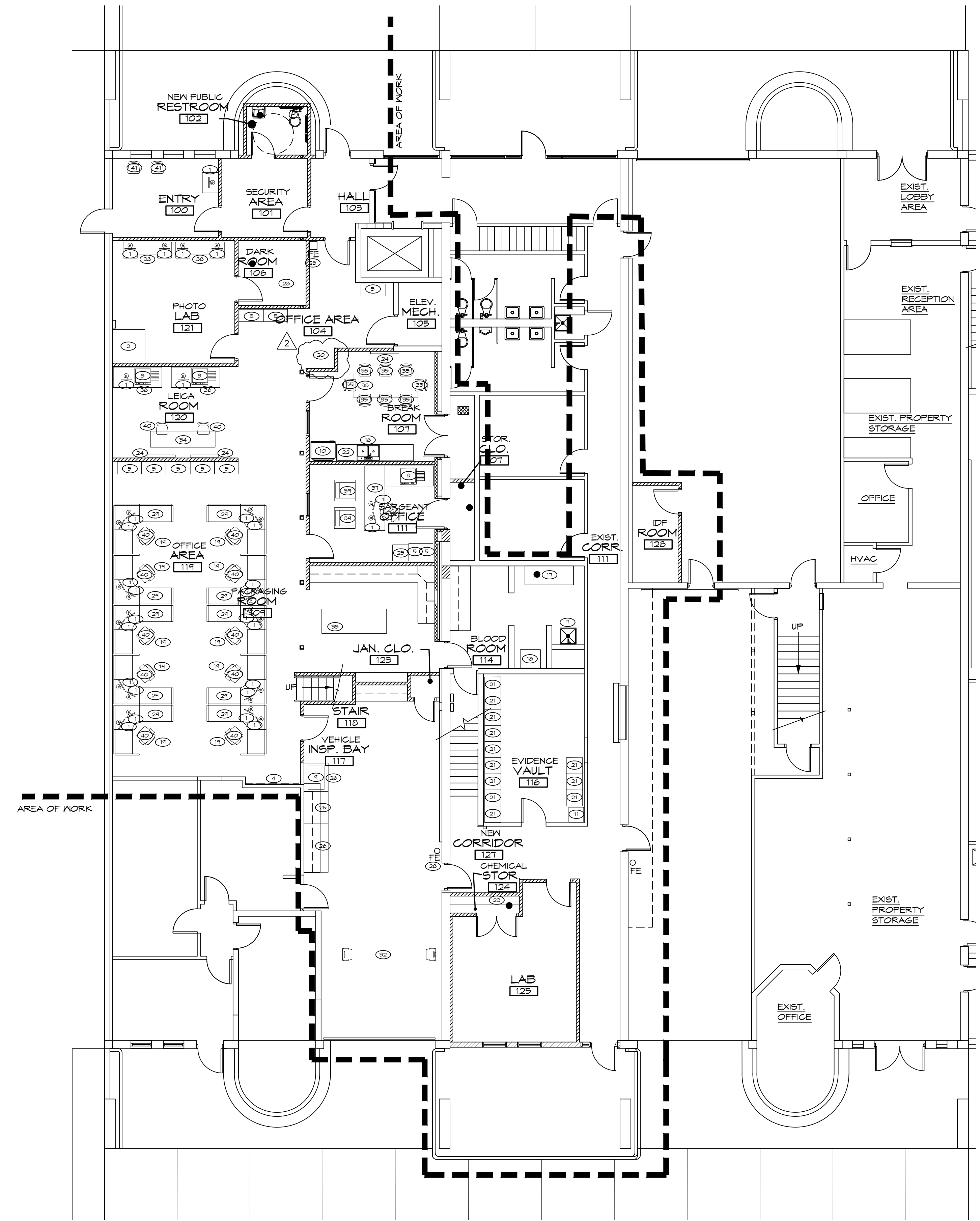


MEZZANINE FRAMING PLAN
1/8"=1'-0" NORTH



MEZZANINE FLOOR PLAN
1/8"=1'-0" NORTH





EQUIPMENT KEYNOTES

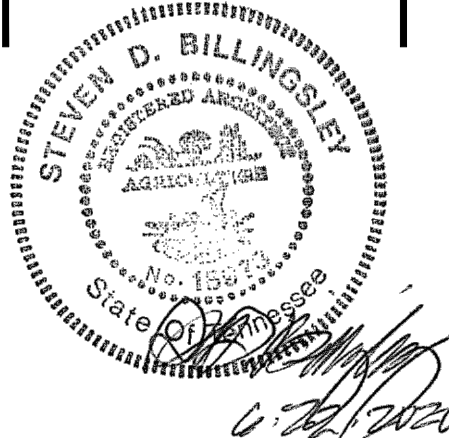
		FURNISHED BY CONTRACTOR	FURNISHED BY OWNER	INSTALLED BY CONTRACTOR	INSTALLED BY OWNER	BLOCKING REQUIRED	ELECTRICAL REQUIRED	WATER / SEWER REQUIRED	NOTES
1	COMPUTER	X		X					
2	4'-0" x 4'-0" PHOTO PRINTER	X		X					
3	PRINTER/COPIER	X		X					
4	PEG BOARD	X		X					4'-0" x 8'-0" x 1/4"
5	FILE CABINETS	X		X					12 TOTAL
6	MOP SINK								EXISTING TO REMAIN. INSTALL NEW FIXTURES
7	DEEP SINK	X		X					INSTALL HOSE BIBB IN ROOM. SEE SHEET P2.1
8	CYANOACRYLATE FUMING SHIELD	X		X					4'-0" x 3'-0" x 8'-2" G.C. TO REMOVE FROM POL. SERV. CTR. & REINSTALL @ POL. ANNEX
9	FINGERPRINT FUMING HOOD	X		X					3'-0" x 2'-0" x 2'-6"
10	FULL SIZE REFRIGERATOR	X		X					REF./FREEZER W/ WATER FOR ICE MAKER 24 CU. FT.
11	MINI REFRIGERATOR	X		X					22" x 22" x 34"
12	FREESTAND CHEM. FUME HOOD	X		X					7'-0" x 25" x 48"
13	STATUS BOARD	X		X					DRY ERASE TYPE WHITE BOARD - 4'-0" x 12'-0"
14	SORBUS SINK W/ FOOT PEDAL	X		X					
15	LARGE SINGLE BASIN SINK	X		X					
16	KITCHEN SINK	X		X					W/ GARBAGE DISPOSAL. SEE SHEET P2.1
17	BLOOD DRYING CABINET (NEW)	X		X					72" x 28" x 83"
18	BLOOD DRYING CABINET (EXIST.)	X		X					50" x 27" x 83" RELOCATE EXIST. FROM ANNEX CRIME SCENE BAY TO NEA BLOOD ROOM
19	CUBICLES	X		X					
20	CSU NETWORK PRINTER	X		X					30" x 48" 2
21	EVIDENCE LOCKERS	X		X					2'-0" x 2'-0" x 7'-0"
22	DISHWASHER	X		X					
23	STORAGE SHELVING	X		X					BRACKETS & STANDARDS, 5 LEVELS - SEE L/A5.2
24	TELEVISION MONITOR	X		X					MONITOR @ 8'-0" AFF. OWNER TO CONFIRM.
25	SAFE	X		X					32" COMMERCIAL GRADE G.C. TO RELOCATE SAFE FROM POL. SERV. CTR. TO ANNEX
26	STAINLESS STEEL TABLE	X		X					1 @ 3'-0" W x 120" L x 36" T, 1 @ 3'-0" W x 48" W x 36" T
27	BEAKER DRYING RACK	X		X					1 @ 3'-0" W x 3'-6" L x 36" T W/INT. SHELF
28	FIRE EXTINGUISHER	X		X					SEE SPECIFICATIONS
29	L-SHAPED ADJUST. LIFT DESK	X		X					2
30	EYE WASH STATION	X		X					
32	VEHICLE LIFT	X		X					
33	TABLE @ BREAK ROOM	X		X					3'-0" x 8'-0" MOLDED PVC TOP. 2
34	TABLE @ LEICA ROOM	X		X					2'-6" x 8'-0" MOLDED PVC TOP
35	CHAIRS @ BREAK ROOM	X		X					8 TOTAL 2
36	TABLE	X		X					3'-0" x 7'-0" MOLDED PVC TOP
37	SARGEANT'S DESK	X		X					2'-6" x 8'-0"
38	PHOTO LAB DESK	X		X					STRAIGHT 2
39	GUEST CHAIRS	X		X					2 TOTAL 2
40	CUBICLE CHAIRS	X		X					
41	WAITING CHAIRS	X		X					2

NOTE:
 1. VEHICLE LIFT EQUAL TO ATLAS PV-10HP OVERHEAD 10,000 LBS CAPACITY ADJUSTABLE HEIGHT 2 POST ABOVE GROUND LIFT.
 2. REFRIGERATOR EQUAL TO WHIRLPOOL MODEL # WRB322DMHV, SKU: 456197, BLACK.
 3. DISHWASHER EQUAL TO: BOSCH MODEL # SHE3AR76UC, SKU: #2683398, BLACK.

FIRST FLOOR EQUIPMENT PLAN
 1/8"=1'-0" NORTH

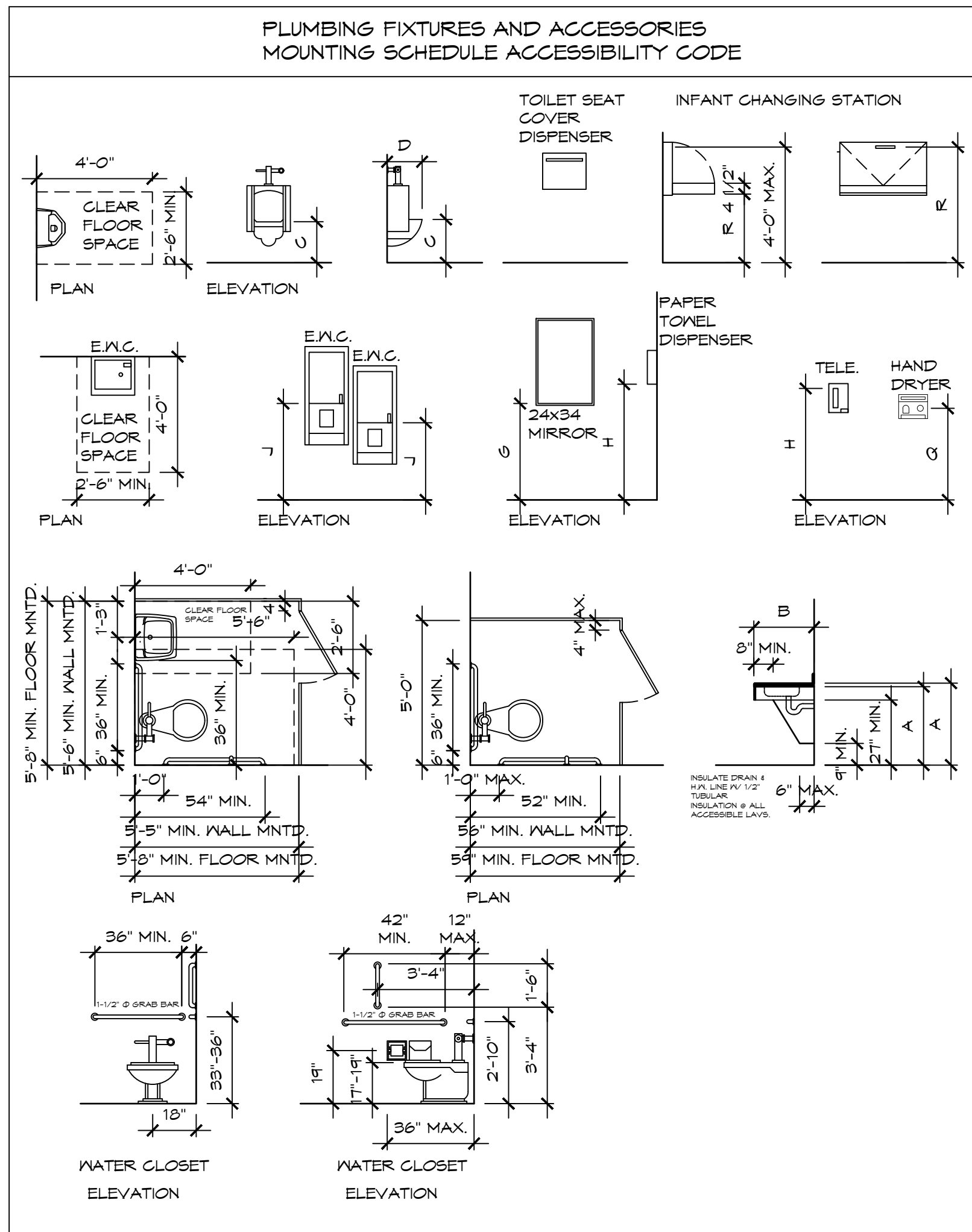


CHATTANOOGA POLICE CRIME SCENE UNIT
 RENOVATION P-20-003-201



ANNEX FACILITY
 3204 AMNICOLA HIGHWAY
 CHATTANOOGA, TENNESSEE

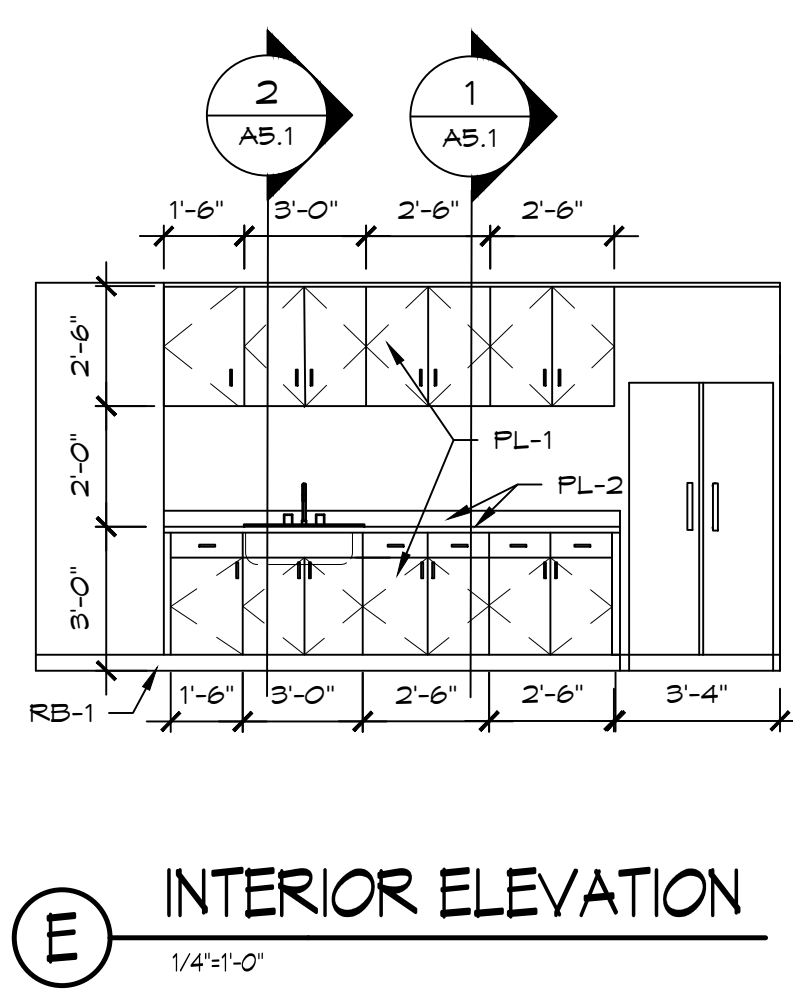
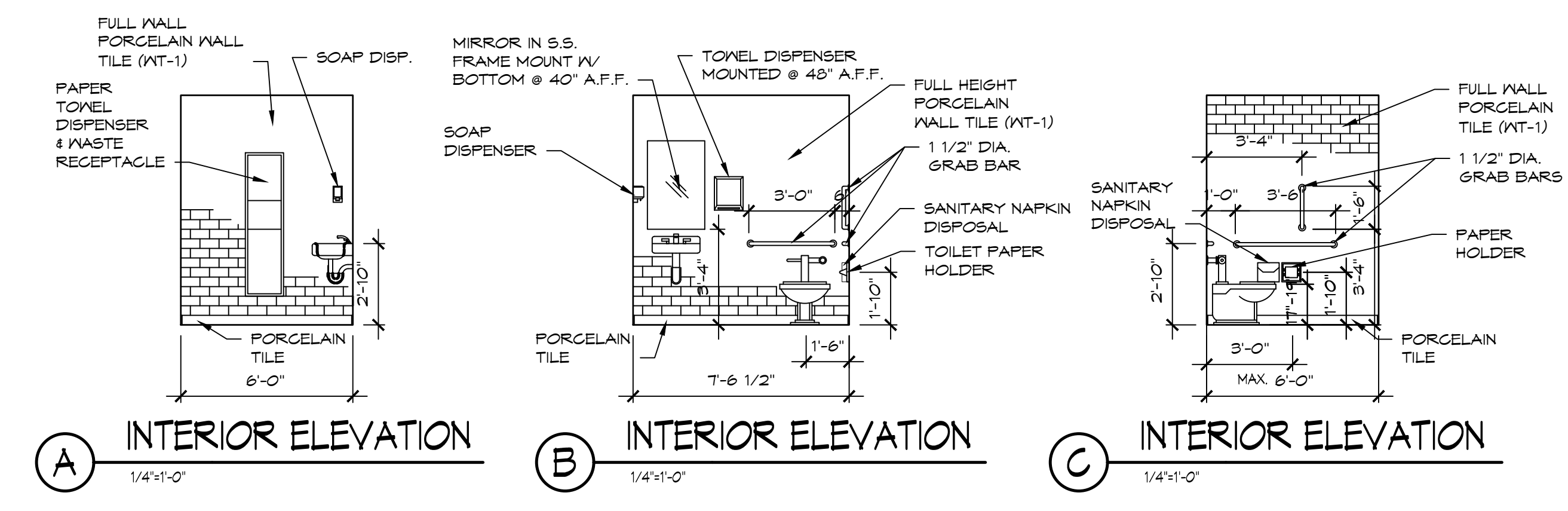
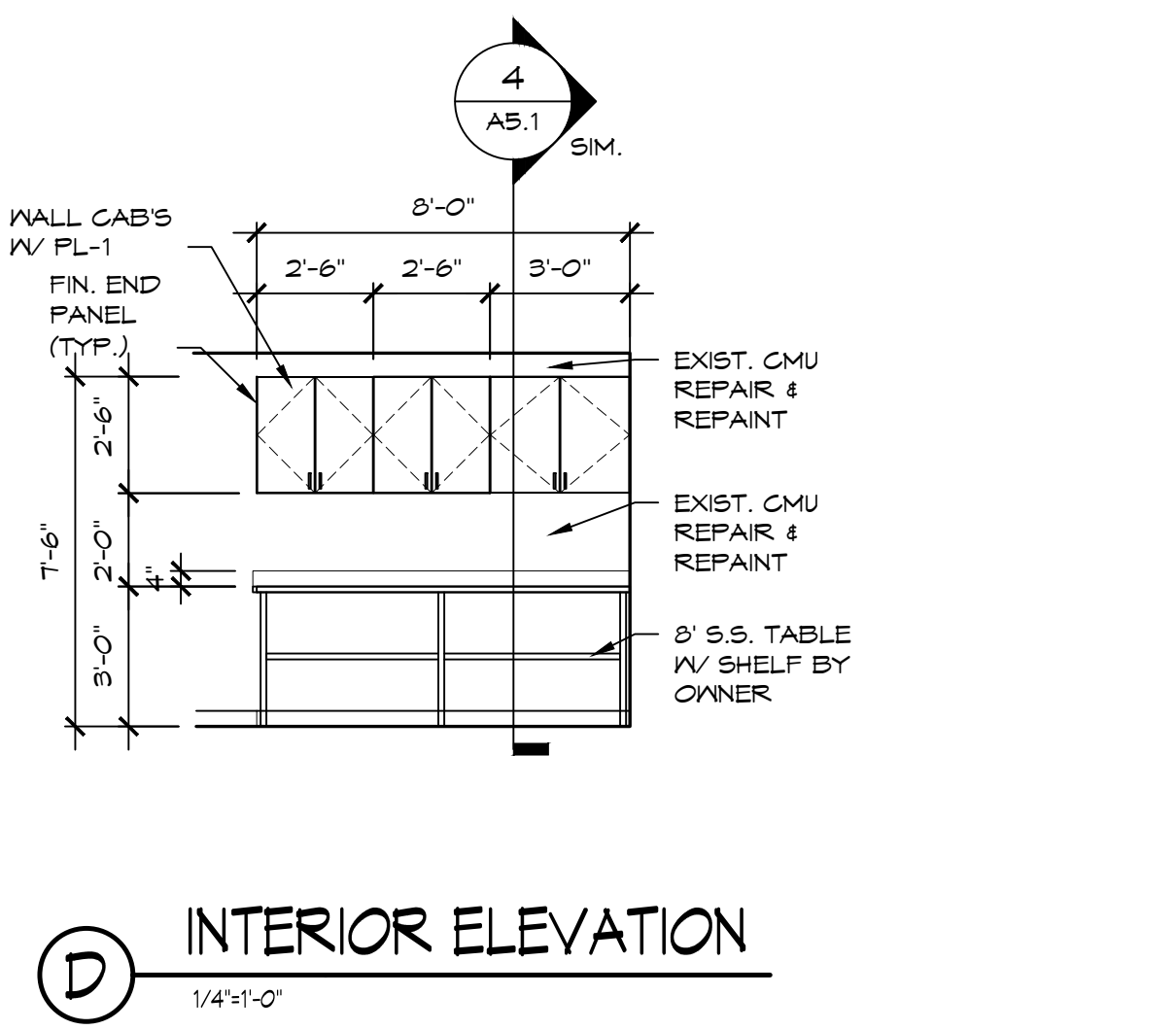
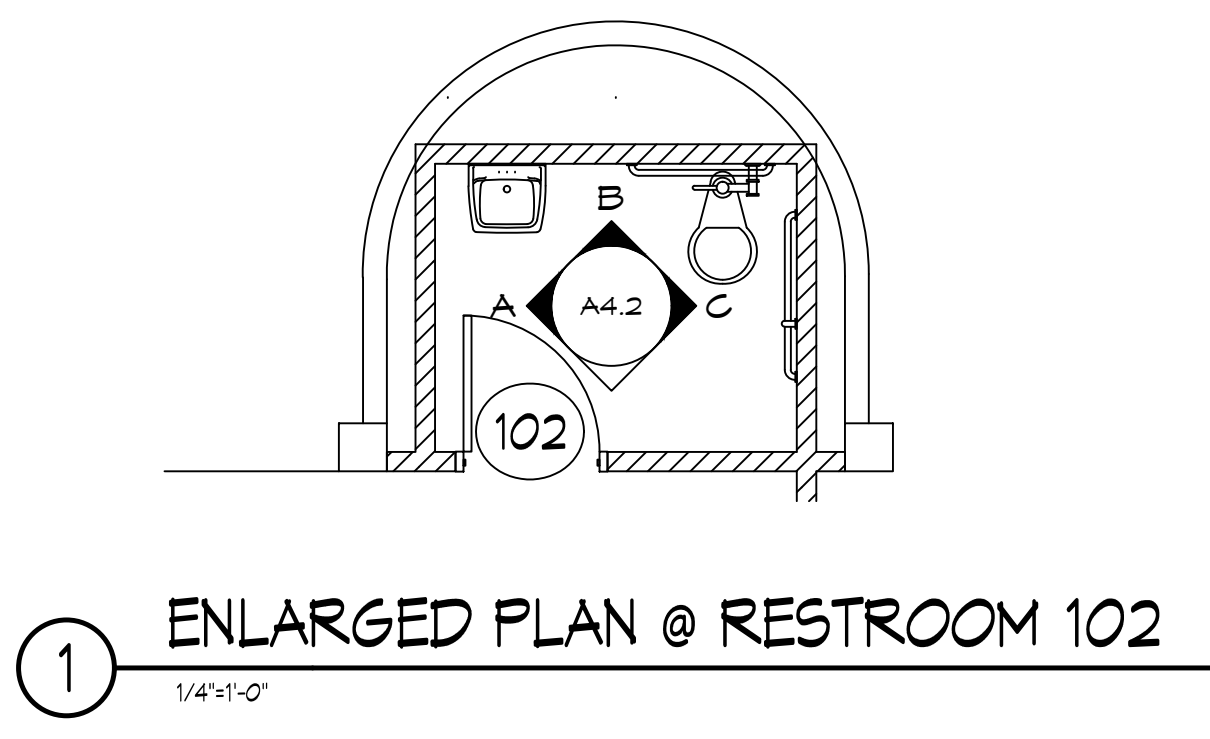
06/22/2020
 20-15
 SDB, LJM, JCT



GENERAL NOTES: RESTROOMS

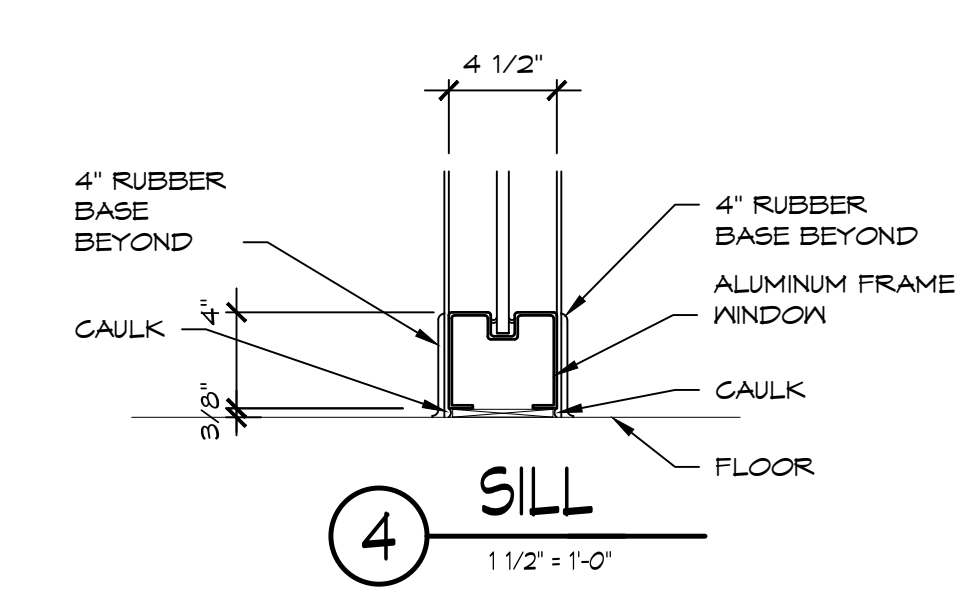
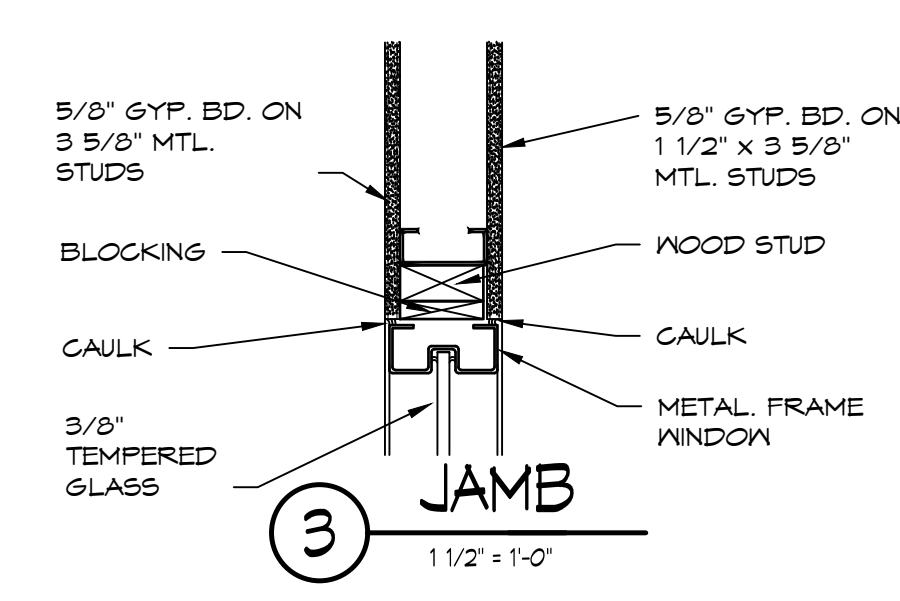
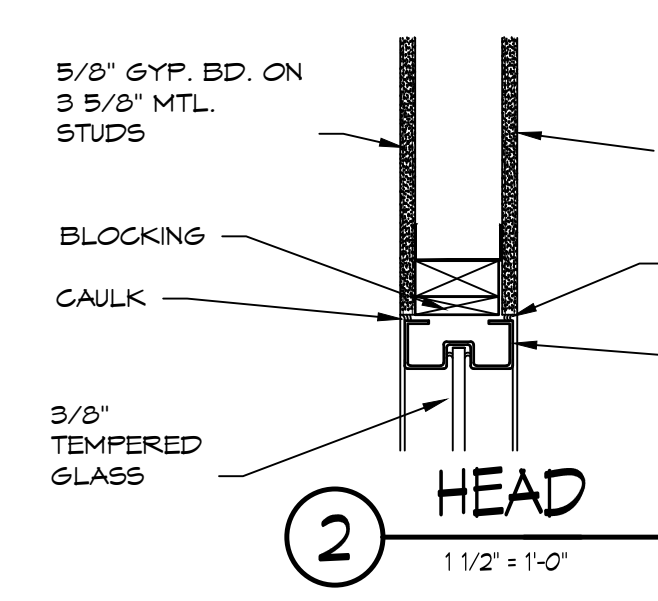
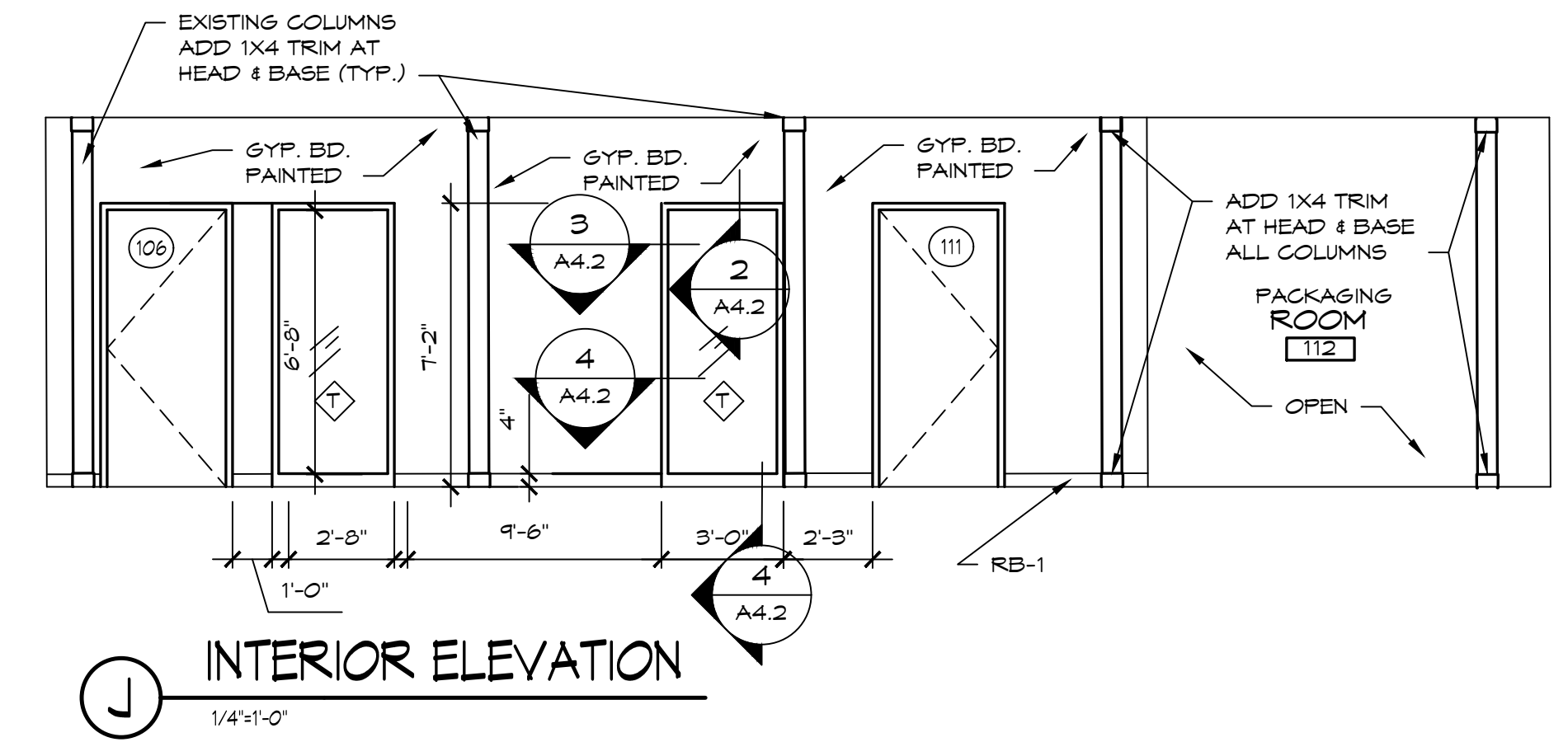
- GRAB BARS AND HANDRAILS ARE 1-1/4" TO 1-1/2" DIAMETER, 1-1/2" FROM WALL. REFER TO FLOOR PLAN FOR LOCATION GRAB BARS. REF. DIAGRAM ABOVE FOR GRAB BAR DIMENSIONS.
- ALL TOILETS STALLS TO HAVE ONE TOILET PAPER DISPENSER W/ BLOCKING IN WALL AS REQUIRED FOR INSTALLATION.
- VERIFY THAT WOMENS TOILET STALLS HAVE ONE FEMINE NAPKIN DISPOSAL UNIT. MOUNT IN FRONT OF TOILET PAPER DISPENSER IF NOT PRESENT. PROVIDE BLOCKING AS REQ'D (SHOULD NOT INTERFERE WITH GRAB BARS.)
- WHERE ONLY ONE DISPENSER OF ANY TYPE IS PROVIDED MOUNT AT ACCESSIBLE HEIGHT.
- ALL CONSTRUCTION AND MOUNTING HEIGHTS SHALL COMPLY WITH ALL APPLICABLE CITY AND STATE ACCESSIBILITY REGULATIONS AS WELL AS THE FEDERAL ADA REGULATIONS, REFER QUESTIONABLE MOUNTING HEIGHTS TO THE ARCHITECT FOR FINAL DECISIONS.
- NOT ALL ACCESSORIES MAY BE USED, REFER TO TOILET ACCESSORIES SCHEDULE AND TOILET ROOM PLANS.

FIXTURES/ACCESSORIES	HANDICAP MOUNTING HEIGHTS	STANDARD MOUNTING HEIGHTS	KIDS MOUNTING HEIGHTS
A LAVATORIES - HEIGHTS TO BOTTOM OF APRON HEIGHT TO TOP OF RIM	24" MIN. 34" MAX.	32" 36"	26" 30"
B LAVATORIES DEPTH FROM FINISHED WALL	17" MIN.	24"	17" MIN.
C URINAL HEIGHT TO TOP OF RIM	17" MAX.	24"	----
D URINAL - DEPTH FROM FINISHED WALL TO OUTER EDGE OF ELONGATED RIM	14" MIN.	19"	----
E GRAB BARS HEIGHT TO TOP OF BAR	33"-36"	NO GRAB BARS	28"-30"
F WATER CLOSET, HT. OF BAR TO TOP OF SEAT	17"-19"	15"	14"-15"
G MIRRORS, HEIGHT MAXIMUM TO BOTTOM EDGE OF REFLECTING SURFACE	40" MAX.	ALIGN W/ HC.	34"
H CONTROLS & DISPENSERS, MAXIMUM TO CENTER LINE OF CONTROL DEVICE (TELEPHONES INCLUDED) FRONT APPROACH SIDE APPROACH	48" MAX. 54" MAX.	54" 54"	42" 48"
J DRINKING FOUNTAINS, MAXIMUM HEIGHT TO TOP OF SPOUT	36" MAX.	40"	32"
K STAIR & RAMP HANDRAILS, TO TOP OF GRIPPING SURFACE ABOVE STAIR NOSINGS	34"-36"	30"-34"	----
L FLUSH CONTROLS FOR WATER CLOSETS	44" MAX.	28"-34"	42" MAX.
M TOILET PAPER DISPENSERS	19" MIN.	19"	14" MIN.
N SANITARY NAPKIN DISPOSALS SHALL BE WITHIN REACH OF WATER CLOSET, BUT NOT TO INTERFERE WITH THE USE OF GRAB BARS.	19" MIN. 27" MAX.	19"	----
P TOILET SEAT COVER DISPENSER TO TOP OF UNIT	50"	59"	44"
Q HAND DRYER	38"	44"-46"	32"
R INFANT CHANGING STATION HT. TO LATCH HEIGHT TO BOTTOM OF TABLE	48" MAX. 24" MIN.	50" 32"	----



NOTES:

- PROVIDE WOOD BLOCKING BETWEEN STUDS @ ALL TOILET ACCESSORIES & CABINETS.
- HANDICAP GRAB BARS TO BE DESIGNED & INSTALLED TO SUPPORT 250 LB.
- INSULATE WASTE LINE & WATER SUPPLY LINES.



CHATTANOOGA POLICE CRIME SCENE UNIT
RENOVATION P-20-003-201



ENLARGED PLANS & INT. ELEVATIONS

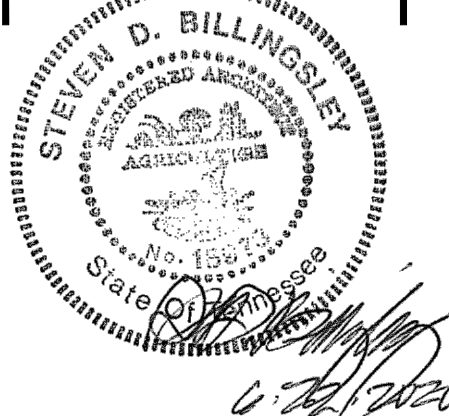
06/22/2020
20-15
SDB, LJM, JCT

A4.2

BILLINGSLEY
ARCHITECTURE
Planning / Architecture / Interiors
Republic Centre - Suite 800 - 633 Chestnut Street - Chattanooga, Tennessee - 37450
(423) 752-0030 - billarch.com

**CHATTANOOGA POLICE CRIME SCENE UNIT
 RENOVATION P-20-003-201**

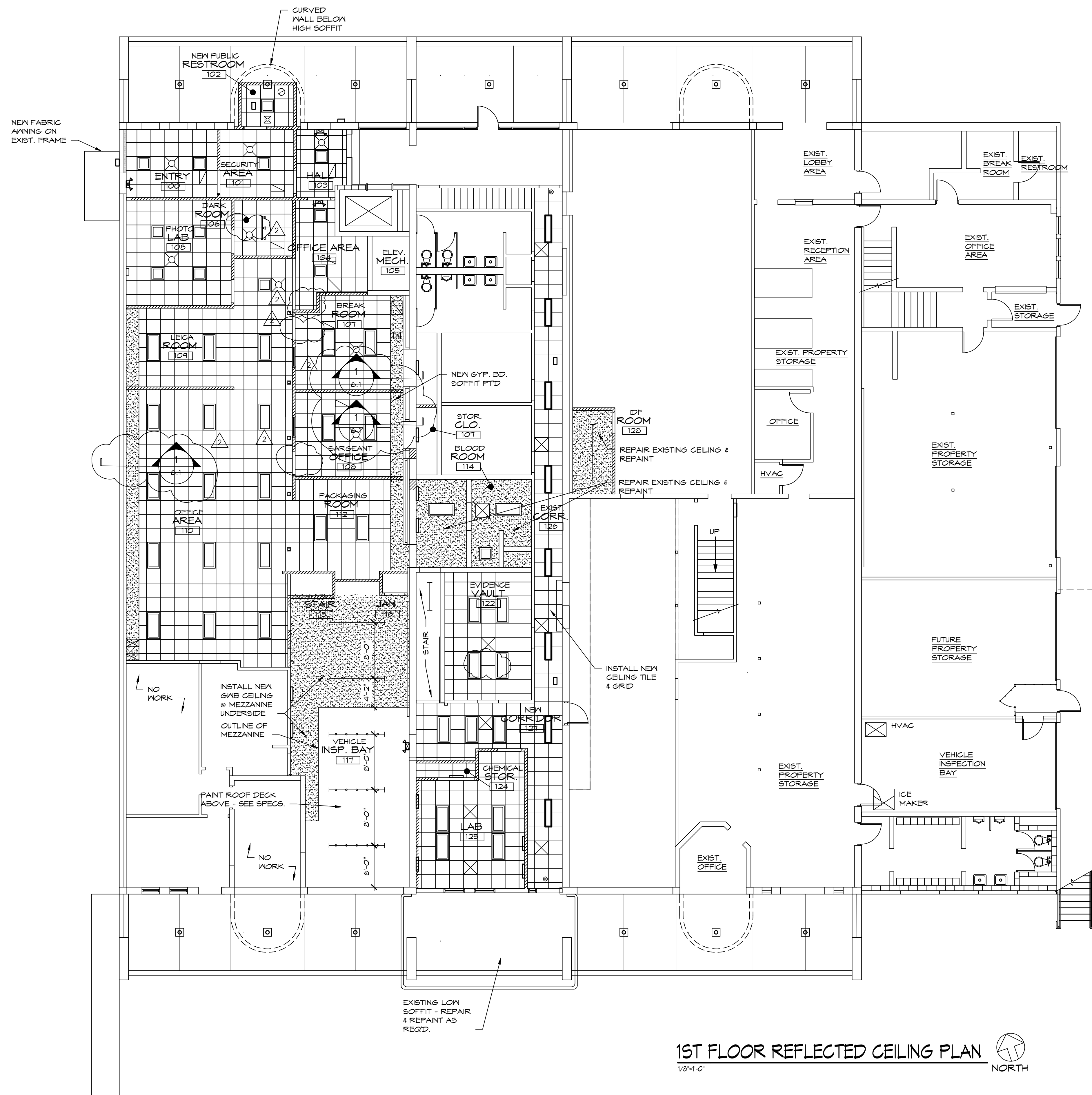
ANNEX FACILITY
 3204 AMNICOLA HIGHWAY
 CHATTANOOGA, TENNESSEE



1ST FLOOR REFLECTED CEILING PLAN

06/22/2020
 20-15
 SDB, IJM, JCT

A6.1

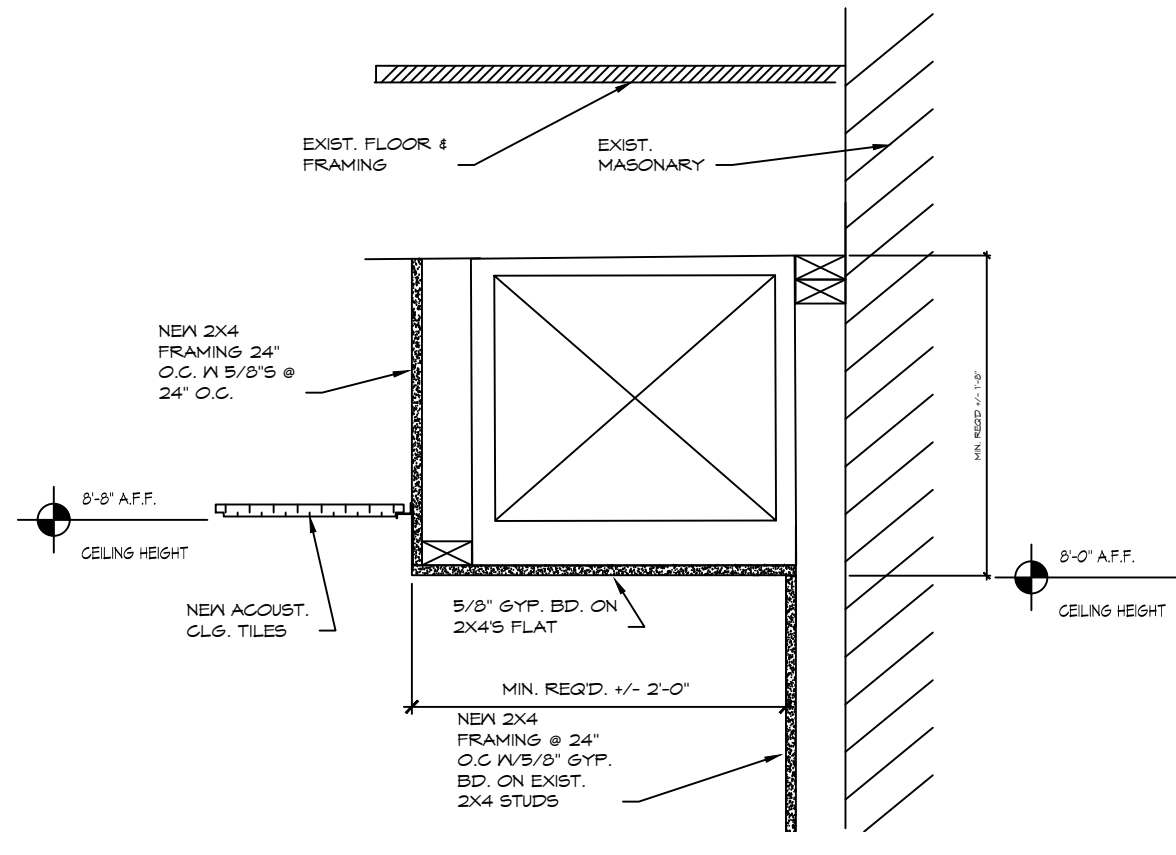


1ST FLOOR REFLECTED CEILING PLAN
 1/8"=1'-0" NORTH

CEILING LEGEND

- 2' x 4' LAY-IN ACOUSTICAL CEILING (SEE FINISH SCHEDULE A2.2)
- 2' x 2' LAY-IN ACOUSTICAL CEILING (SEE FINISH SCHEDULE A2.2)
- GNB CEILING UNLESS NOTED OTHERWISE
- 2' x 4' LED LIGHT FIXTURE - SEE ELECTRICAL
- 2' x 2' LED LIGHT FIXTURE - SEE ELECTRICAL
- 2' LED CEILING STRIP LIGHT
- 4' STRIP LED - SURFACE MOUNTED
- 8' STRIP LED - SURFACE MOUNTED
- 8' STRIP LED - SUSPENDED @ 16" A.F.F.
- DIMMABLE LED STRIP LIGHT - SET @ 36" A.F.F. UNLESS NOTED OTHERWISE
- 1' x 4' LED
- 1' x 8' LED
- TRACK LIGHTING - SEE ELECTRICAL
- VANITY LIGHT FIXTURE - SEE ELECTRICAL
- WALL MOUNTED LIGHT FIXTURE (EXTERIOR & INTERIOR) - SEE ELECTRICAL
- SURFACE MOUNTED LIGHT FIXTURE - SEE ELECTRICAL
- RECESSED LIGHT FIXTURE - SEE ELECTRICAL
- 6" RECESSED CAN LIGHT FIXTURE - SEE ELECTRICAL
- EMERGENCY LIGHT FIXTURE - SEE ELECTRICAL
- EXTERIOR SECURITY LIGHT FIXTURE - SEE ELECTRICAL
- TYPICAL EXHAUST FAN - SEE MECHANICAL
- EMERGENCY LIGHT - SEE ELECTRICAL
- SUPPLY AIR DIFFUSER
- RETURN AIR DIFFUSER
- SUPPLY AIR DIFFUSER

- REFLECTED CEILING PLAN NOTES:**
- SEE ELECTRICAL DRAWINGS FOR LIGHTING FIXTURE SCHEDULES & TYPES.
 - AT VEHICLE INSPECTION BAYS, IN ADDITION TO OVERHEAD LIGHTING, INSTALL DIMMABLE LIGHTING ON WALLS (ON EA. VEHICLE SIDE) AT A HEIGHT OF 36" A.F.F. U.N.O. - SEE FLOOR PLAN.
 - ALL FIXTURES SHOWN ARE NEW FIXTURES. WHERE FIXTURES ALREADY EXIST, THEY ARE TO BE REMOVED, PROPERLY DISPOSED OF, AND NEW FIXTURES INSTALLED.



1 WALL SECTION
 1"=1'-0"