

**ADDENDUM NO: 1**

**REQ NO: 180268**

**FINAL SUBMITTAL: January 29, 2019 2:00 PM EST**

**FINAL QUESTIONS: January 18, 2019 2:00 PM EST**

**Department: Parks Division, Public Works**

**Changes to Bid No. 305331:**

**The following changes have been made to Bid# 305331 per the pre-bid conference held on January 16, 2019.**

- 1. The Design and Initial Installation for the Aquarium Plaza has been separated into three (3) areas as identified on the site map.**
- 2. Removed Design and Initial Installation for Riverfront Parking Lots (ROW) from Bid Form**
- 3. Added MLK Medians – Riverfront Pkwy to Carter Street.**
- 4. Removed Riverfront Parking Lots and Riverside & 3rd Street Median/ROW From Bid Form**

**Attached are several site maps / photos for reference in addition to site location list maps already in the bid specs.**

**Req No: 180268 Downtown Landscape Improvements & Maintenance**

**PLEASE SIGN ONE (1) COPY OF ADDENDUM AND RETURN TO THE PURCHASING DEPARTMENT. RETAIN THE OTHER COPY FOR YOUR FILES.**

**Name:** \_\_\_\_\_

**Company:** \_\_\_\_\_  
\_\_\_\_\_

**CITY OF CHATTANOOGA  
PURCHASING DEPARTMENT  
Mark McKeel  
City Hall Suite G13  
CHATTANOOGA, TN 37402  
TELE: (423) 643-7236  
FAX: (423) 643-7244**

**Bid Form  
Downtown Landscaping Services**

**Company Name:** \_\_\_\_\_

Line	Price
Design and Initial Installation: Bessie Smith Hall & Parking Lots	\$
Design and Initial Installation: City Hall, Annex, City Council Bldg & Parking Lot	\$
Design and Initial Installation: Clock Tower Park & Crye Leike Beds	\$
Design and Initial Installation: Development Resource Center	\$
Design and Initial Installation: Market Street Planters and Beds	\$
Design and Initial Installation: Memorial Auditorium Mini Park	\$
Design and Initial Installation: Pine Street & MLK Triangle Median	\$
Design and Initial Installation: Riverside/Riverfront Pkwy Medians (ROW)	\$
Design and Initial Installation: Tivoli Mini Park	\$
Design and Initial Installation: TN Aquarium Plaza 1	\$
Design and Initial Installation: TN Aquarium Plaza 2	\$
Design and Initial Installation: TN Aquarium Plaza 3	\$
Bessie Smith Hall & Parking Lots Annual Planting	\$ /Planting
Broad St Bike Lane Planters & 6 <sup>th</sup> St Bus Stop Annual Planting	\$ /Planting
City Hall, Annex, City Council Bldg & Parking Lot Annual Planting	\$ /Planting
Clock Tower Park & Crye Leike Beds Annual Planting	\$ /Planting

Development Resource Center Annual Planting	\$	/Planting
Market St Planters & Beds Annual Planting	\$	/Planting
Memorial Auditorium Mini Park Annual Planting	\$	/Planting
MLK Median Planters; Riverfront Pkwy to 3 <sup>rd</sup> Street/ROW Annual Planting	\$	/Planting
Pine St & MLK Triangle Median Annual Planting	\$	/Planting
Tivoli Mini Park Annual Planting	\$	/Planting
Walnut St Bridge Annual Planting	\$	/Planting
1 <sup>st</sup> Street Art Garden Monthly Maintenance	\$	/Month
4 <sup>th</sup> Street Medians & ROW Monthly Maintenance	\$	/Month
13 <sup>th</sup> Street ROW Monthly Maintenance	\$	/Month
Bessie Smith Hall & Parking Lots Monthly Maintenance	\$	/Month
Broad Street Bike Lane Planters & 6 <sup>th</sup> St Bus Stop Planters Monthly Maintenance	\$	/Month
Broad Street Median & ROW Monthly Maintenance	\$	/Month
Carter Street Median Monthly Maintenance	\$	/Month
City Hall, Annex, City Council Bldg & Parking Lot Monthly Maintenance	\$	/Month
Chestnut Street ROW Monthly Maintenance	\$	/Month
Clock Tower Park & Crye Leike Beds Monthly Maintenance	\$	/Month
Development Resource Center Monthly Maintenance	\$	/Month
Frazier Avenue ROW Monthly Maintenance	\$	/Month
Georgia & MLK Triangle Median Monthly Maintenance	\$	/Month
Main Street ROW Monthly Maintenance	\$	/Month
Main Terrain Art Park Monthly Maintenance	\$	/Month
Manufacturer's Row Monthly Maintenance	\$	/Month

Market Street Medians Monthly Maintenance	\$	/Month
Market Street Planters and Beds Monthly M Maintenance	\$	/Month
Market Street ROW Monthly Maintenance	\$	/Month
Memorial Auditorium Mini Park Monthly Maintenance	\$	/Month
Miller Park Monthly Maintenance	\$	/Month
MLK Median Planters; Riverfront Pkwy to Carter Street Monthly Maintenance	\$	/Month
Phillips Parks & Surrounding ROW Monthly Maintenance	\$	/Month
Pine Street & MLK Triangle Median Monthly Maintenance	\$	/Month
Riverfront Parkway Monthly Maintenance	\$	/Month
Riverside/Riverfront Pkwy Medians, ROW Monthly Maintenance	\$	/Month
Tivoli Mini Park Monthly Maintenance	\$	/Month
Labor Rate	\$	/Hour

Location	Address	Grounds & Lawn Maintenance	Landscape Maintenance	Annual Planting	Tree Pit Maintenance	Landscape Improvements	Estimated Lawn Acreage	Mow Frequency (Days)	Mow Height (Inches)	Site Conditions
1st Street Art Garden	Between Walnut & Cherry Streets	X	X					7		
4th Street Medians & ROW	Georgia Ave to US 27 ramp	X					0.30	7	3	
13th St. ROW	200 E MLK Blvd	X	X	X	X	X	1.00	7	3	
Bessie Smith Hall & Parking lots	Broad St. Bike Lane Planters & 6th St. bus stop planters	X	X	X						
Broad St. medians & ROW	Between MLK & Aquarium Way	X	X	X	X					
Carter Street Median	11th - 13th Streets	X	X	X	X					
Cherokee & Frazier ROW	100 E 11th Street	X	X	X		X	0.2	7	3	only a 21" mower is acceptable;
Chestnut St. ROW	Minor St to Tampa St									
Clock Tower Park & Crye Leike Beds	Market St. at Houston St (12th)	X	X	X	X		0.1	7	3	
Development Resource Center	1250 Market Street	X	X	X	X	X	0.2	7	2	only a 21" mower is acceptable;
Frazier Ave ROW	Barton Ave to Cherokee									
Georgia & MLK (Triangle median)	US27 to Fire Station	X	X		X					
Main Street ROW										
Main Terrain Art Park	450 West 13th Street	X	X		X		2.96	7	3	only a 21" - 33" walk behind mower is acceptable; avoid scalping
Manufacturers ROW	Cherokee to US 27	X			X					
Market St. medians	20th to Main & 13th to 14th Streets	X						10	3	
Market St. planters & beds	Between MLK & 6th Ave		X	X		X				
Market St. ROW										
Memorial Auditorium Mini Park	327 McCaille Ace	X	X	X	X	X				
Miller Park	910 Market St									
MLK Median Planters	Between Georgia & Market	X	X	X			0.5	5	1-1.5	Hybrid Bermudagrass; reel mower preferred
MLK Median -Riverfront Pkwy to Carter St		X	X	X						
Phillips Park (Cecil Phillips Park) & surrounding ROW	700 Georgia Avenue	X	X	X	X		0.50	10	3	
Pine St. & MLK triangle median		X	X	X	X			7	2	bermuda
Riverfront Pkwy medians	Main St to City Marina	X	X	X		X		10	3	
Riverside/Riverfront Pkwy ramp @ bluffview	Bluffview area	X	X	X		X				
Tivoli Mini Park	W 7th St. & Chestnut St	X	X	X		X				
TN Aquarium Plaza	1 Broad St			X		X				
Walnut St. Bridge				X		X				Note 3 separate area on site map; arches & bluff area round planters on bridge











# GISMO 5



Legend

Parcels



50.00 100.0 Feet

AD\_1983\_StatePlane\_Tennessee\_FIPS\_4100\_Feet  
Latitude Geographics Group Ltd.

Disclaimer: This map is to be used for reference only, and no other use or reliance on the same is authorized. This map was automatically generated using HCGIS Mapping System. Parcel lines are shown for reference only and are not intended for conveyances, nor is it intended to substitute for a legal survey or property abstract.



# GISMO 5



Legend

□ Parcels

50.00 100.0 Feet



LD\_1983\_StatePlane\_Tennessee\_FIPS\_4100\_Feet  
Latitude Geographics Group Ltd.

Disclaimer: This map is to be used for reference only, and no other use or reliance on the same is authorized. This map was automatically generated using HCGIS Mapping System. Parcel lines are shown for reference only and are not intended for conveyances, nor is it intended to substitute for a legal survey or property abstract.



# GISMO 5



**Legend**  
□ Parcels

50.00 100.0 Feet

AD\_1983\_StatePlane\_Tennessee\_FIPS\_4100\_Feet  
Latitude Geographics Group Ltd.

Disclaimer: This map is to be used for reference only, and no other use or reliance on the same is authorized. This map was automatically generated using HCGIS Mapping System. Parcel lines are shown for reference only and are not intended for conveyances, nor is it intended to substitute for a legal survey or property abstract.





Legend  
□ Parcels



100.00  
200.00 Feet



Disclaimer: This map is to be used for reference only, and no other use or reliance on the same is authorized. This map was automatically generated using HCGIS Mapping System. Parcel lines are shown for reference only and are not intended for conveyances, nor is it intended to substitute for a legal survey or property abstract.

# GISMO 5



Legend  
□ Parcels

Disclaimer: This map is to be used for reference only, and no other use or reliance on the same is authorized. This map was automatically generated using HCGIS Mapping System. Parcel lines are shown for reference only and are not intended for conveyances, nor is it intended to substitute for a legal survey or property abstract.

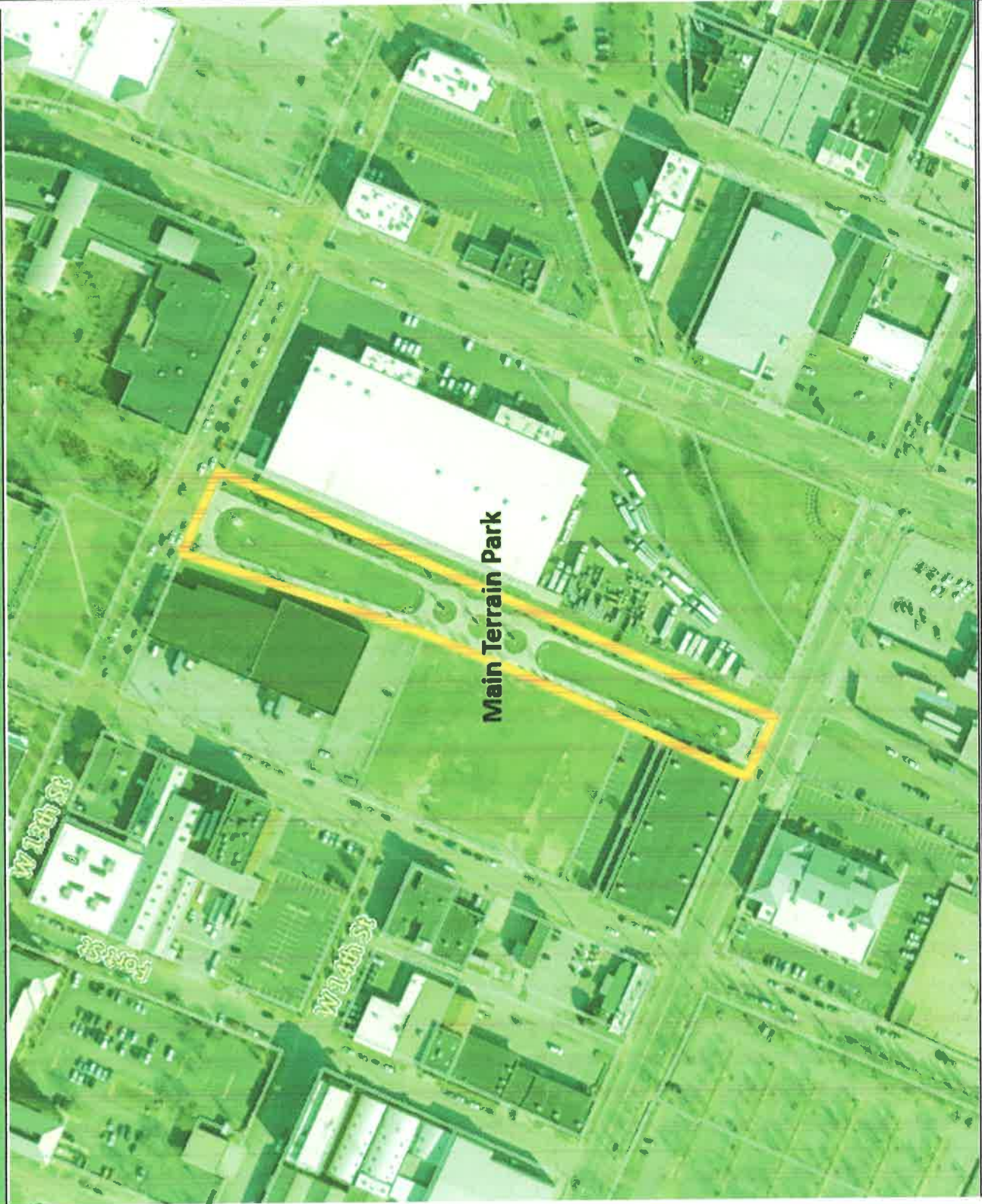
100.00 200.00 Feet  
AD\_1983\_StatePlane\_Tennessee\_FIPS\_4100\_Feet  
Latitude Geographics Group Ltd.



KING ST

DRC

DRC



Legend

□ Parcels

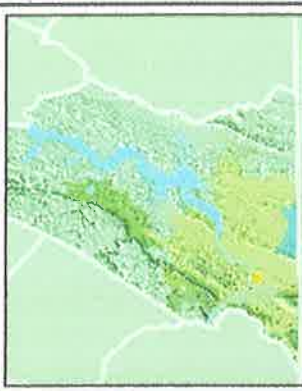


Disclaimer: This map is to be used for reference only, and no other use or reliance on the same is authorized. This map was automatically generated using HCGIS Mapping System. Parcel lines are shown for reference only and are not intended for conveyances, nor is it intended to substitute for a legal survey or property abstract.

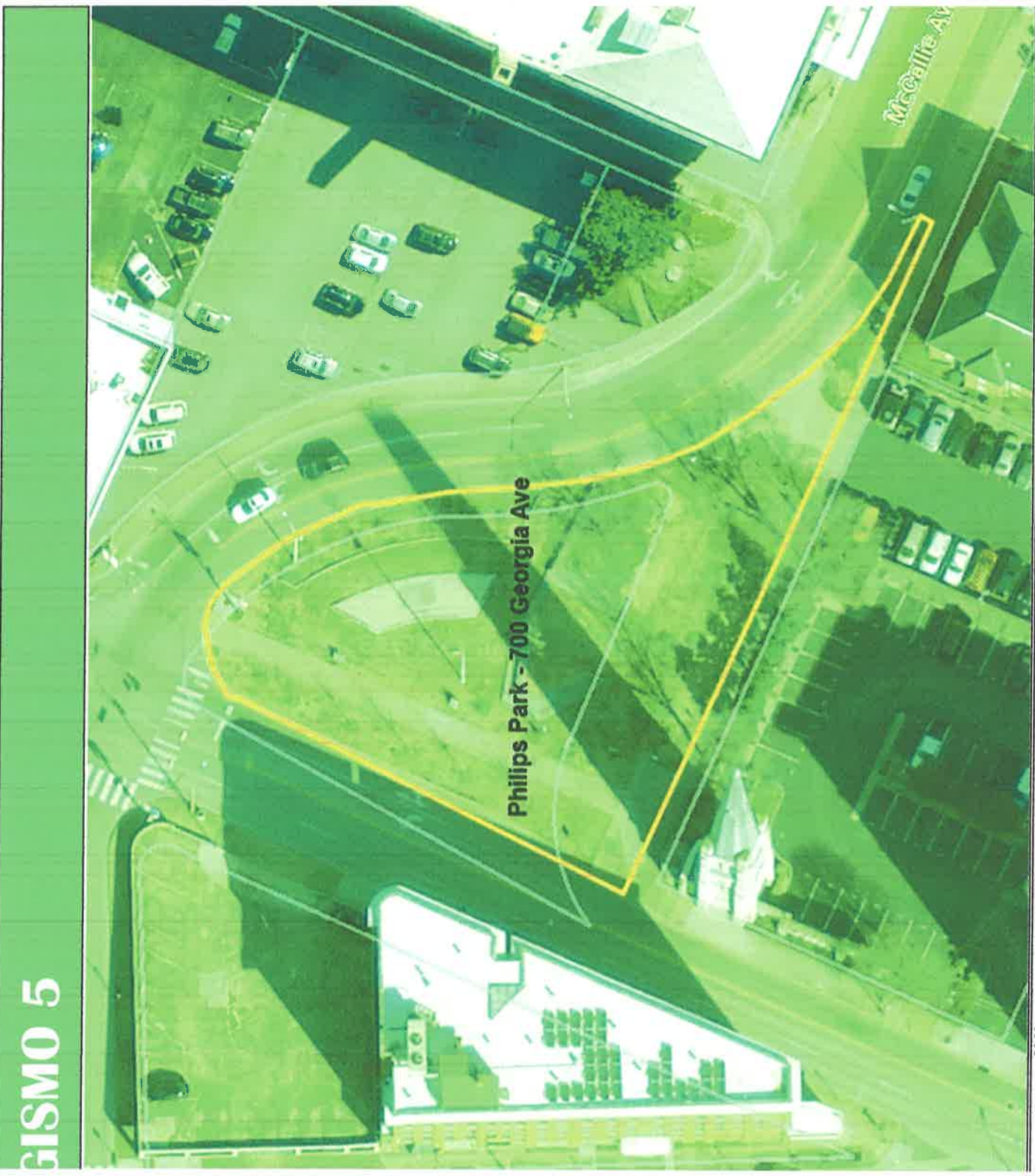
400.0Feet







Legend  
 □ Parcels



**GISMO 5**

Disclaimer: This map is to be used for reference only, and no other use or reliance on the same is authorized. This map was automatically generated using HCGIS Mapping System. Parcel lines are shown for reference only and are not intended for conveyances, nor is it intended to substitute for a legal survey or property abstract.

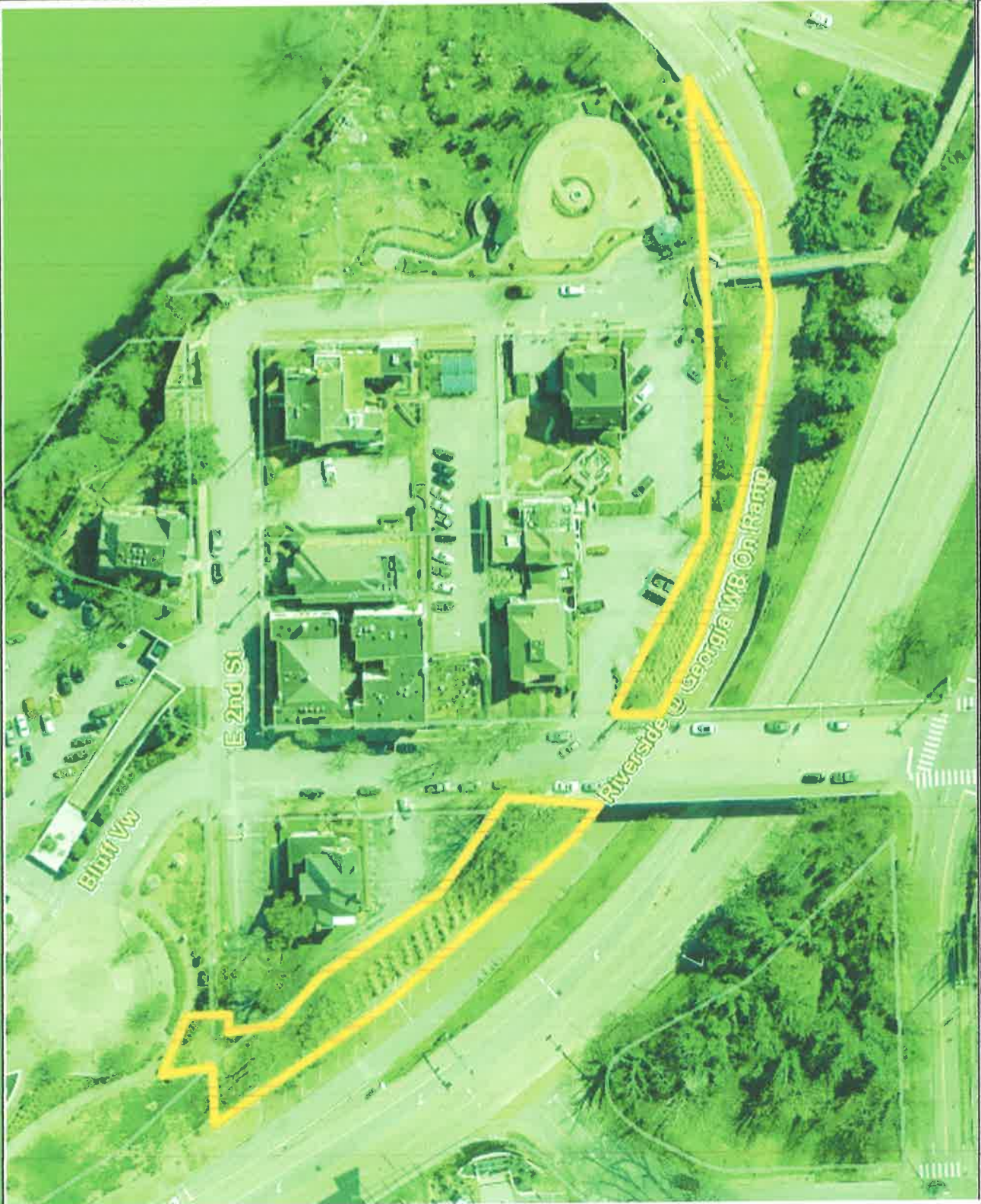


100.0 Feet



AD\_1983\_StatePlane\_Tennessee\_FIPS\_4100\_Feet  
 Latitude Geographics Group Ltd.

# GISMO 5



Legend  
□ Parcels

RIVERSIDE  
DRIVE  
BLUFF VIEW

100.00 200.00 Feet

AD\_1983\_StatePlane\_Tennessee\_FIPS\_4100\_Feet  
Latitude Geographics Group Ltd.

Disclaimer: This map is to be used for reference only, and no other use or reliance on the same is authorized. This map was automatically generated using HCGIS Mapping System. Parcel lines are shown for reference only and are not intended for conveyances, nor is it intended to substitute for a legal survey or property abstract.

