

1 BASEMENT LEVEL FINISH PLAN
1/4" = 1'-0"



2 GROUND LEVEL FINISH PLAN
1/4" = 1'-0"



3 SECOND LEVEL FINISH PLAN
1/4" = 1'-0"

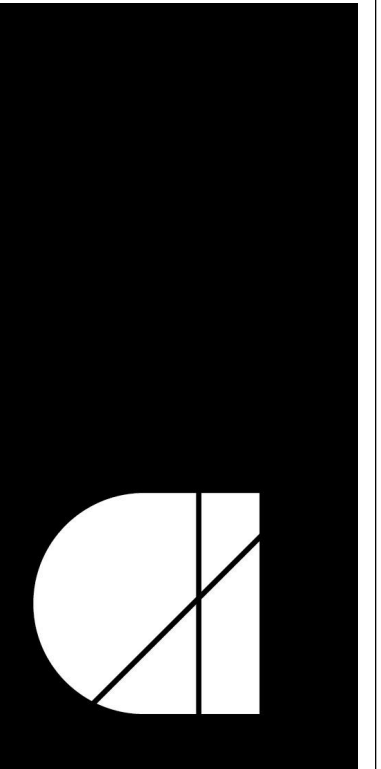


FINISH LEGEND:

TYPICAL MATERIAL ABBREVIATIONS	
ACT	ACOUSTICAL CEILING TILE
CP	CARPET
P	PAINT
PL	PLASTIC LAMINATE
SP	SPECIALTY ITEM
VCT	VINYL COMPOSITION TILE
WC	WALLCOVERING
WD	WOOD
TS	TRANSITION STRIP
TH	THRESHOLD
MATERIAL	MATERIAL CHANGE
MATERIAL	MATERIAL
WP	WATERPROOF FLOOR AS OUTLINED

SEE A070 FOR GENERAL NEW WORK NOTES AND GENERAL FINISH NOTES
SEE A800S FOR INTERIOR DETAILS
SEE A1-201 FOR FINISH SCHEDULE
SEE A1-805 FOR FINISH TRANSITION DETAILS

- F1 UND-1, ACOUSTIC UNDERLAYMENT THROUGHOUT THE 1ST LEVEL AND 2ND LEVEL, UNDER LVT.
- F2 ALL DOOR CASEMENT, WINDOW CASEMENT AND CROWN MOLDING IN HOUSE TO BE P-7 UNLESS OTHERWISE NOTED. SEE ELEVATIONS FOR MORE INFORMATION.



**architecture
incorporated**
1902 campus commons drive
suite 101
reston, virginia 20191
Tel: 703.476.3900
www.archinc.com

Construction Documents for:
**ARLINGTON COUNTY DHS
GROUP HOME**
1212 S. IRVING ST.
ARLINGTON, VA 22204

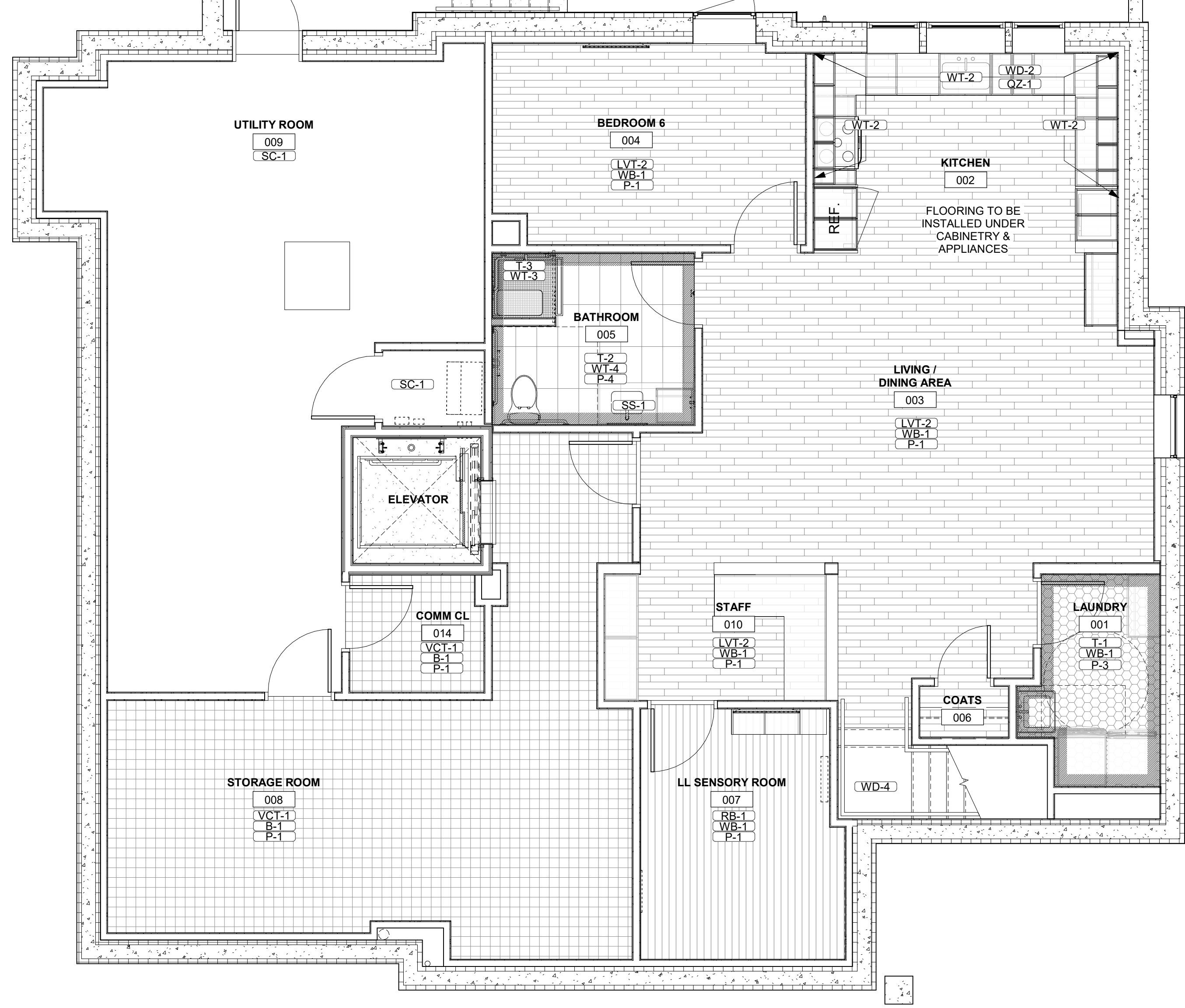
Project: 19296-01
Issued: 10/21/20
100% CONSTRUCTION DOCS

**FINISH PLANS -
BASEMENT,
GROUND & 2ND
LEVEL**

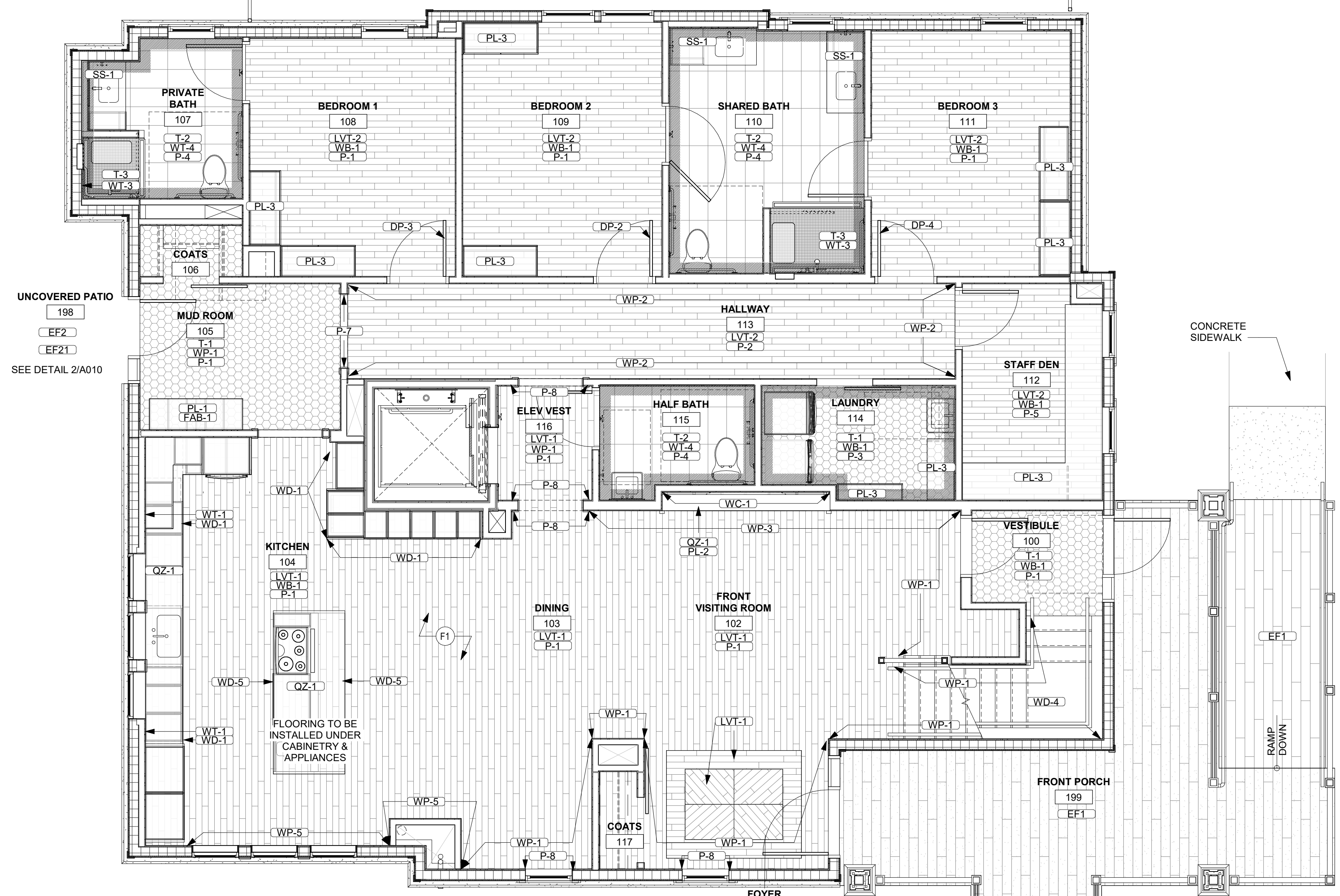
Scale: 1/4" = 1'-0"
Drawn: Author
Checked: Checker

F101

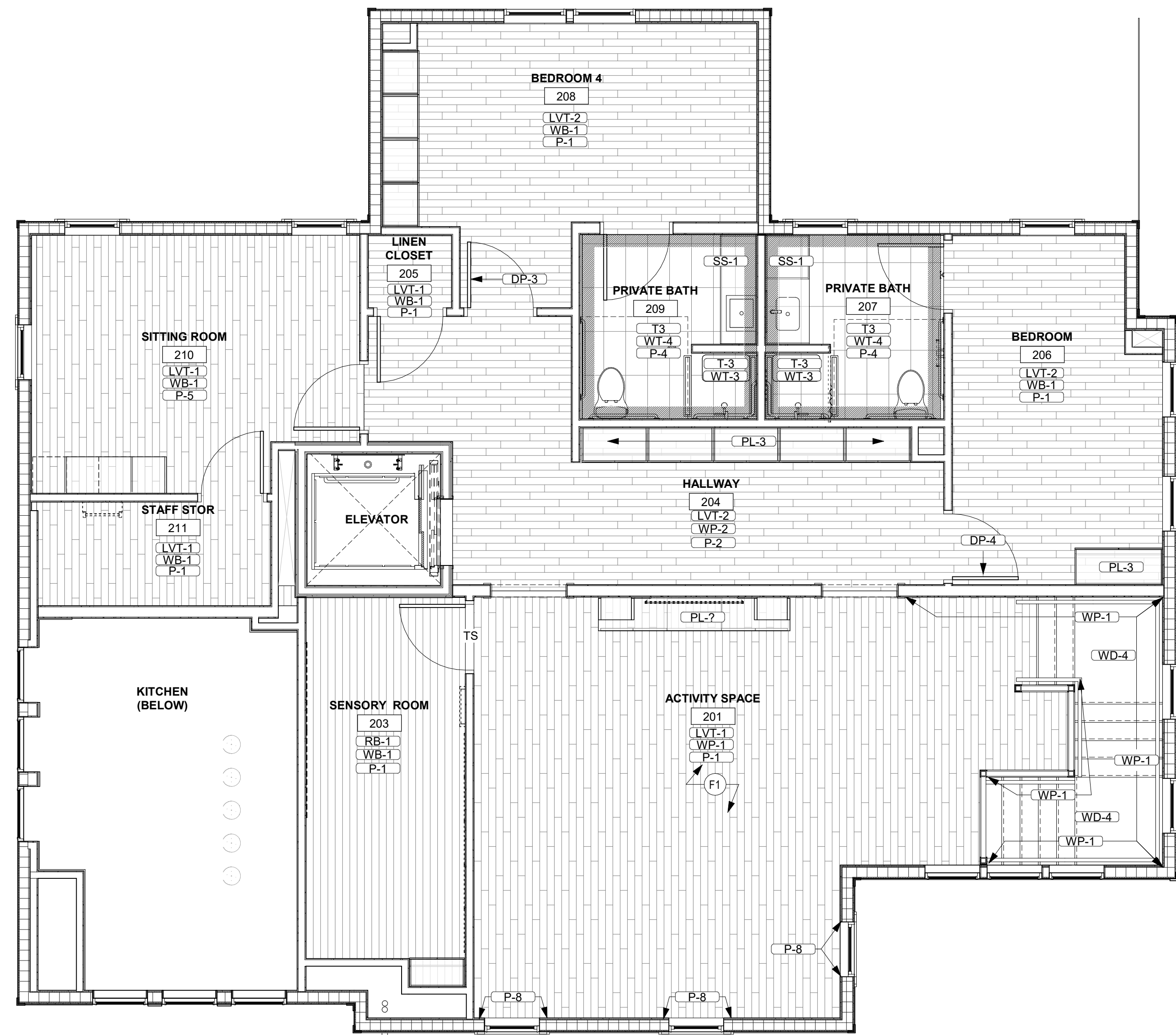
100% CONSTRUCTION DOCS



1 BASEMENT LEVEL FINISH PLAN
 1/4" = 1'-0"



2 GROUND LEVEL FINISH PLAN
 1/4" = 1'-0"



3 SECOND LEVEL FINISH PLAN
 1/4" = 1'-0"

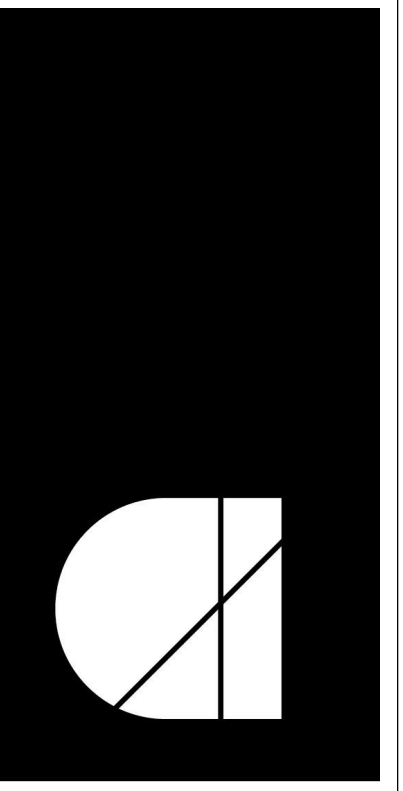
FINISH LEGEND:

TYPICAL MATERIAL ABBREVIATIONS	
ACT	ACOUSTICAL CEILING TILE
CP	CARPET
P	PAINT
PL	PLASTIC LAMINATE
SP	SPECIALTY ITEM
VCF	VINYL COMPOSITION TILE
WC	WALLCOVERING
WD	WOOD

TS	TRANSITION STRIP
TH	THRESHOLD
MATERIAL	MATERIAL CHANGE
MATERIAL	MATERIAL CHANGE
WP	WATERPROOF FLOOR AS OUTLINED

SEE A070 FOR GENERAL NEW WORK NOTES AND GENERAL FINISH NOTES
 SEE A800s FOR INTERIOR DETAILS
 SEE A1-201 FOR FINISH SCHEDULE
 SEE A1-805 FOR FINISH TRANSITION DETAILS

F1	UND-1. ACOUSTIC UNDERLAYMENT THROUGH THE 1ST LEVEL AND 2ND LEVEL UNDER LVT.
F2	ALL DOOR CASEMENT, WINDOW CASEMENT AND CROWN MOLDING IN HOUSE TO BE P-7 UNLESS OTHERWISE NOTED. SEE ELEVATIONS FOR MORE INFORMATION.
F3	
F4	
F5	
F6	
F7	
F8	
F9	
F10	



**architecture
 incorporated**
 1902 campus commons drive
 suite 101
 reston, virginia 20191
 Tel: 703.476.3900
 www.archinc.com

Construction Documents for:
**ARLINGTON COUNTY DHS
 GROUP HOME**
 1212 S. IRVING ST.
 ARLINGTON, VA 22204

Project: 19296-01

Issued 10/21/20

100% CONSTRUCTION DOCS

Revisions

**FINISH PLANS -
 BASEMENT,
 GROUND & 2ND
 LEVEL**

Scale 1/4" = 1'-0"
 Drawn Author
 Checked Checker

F101

100% CONSTRUCTION DOCS