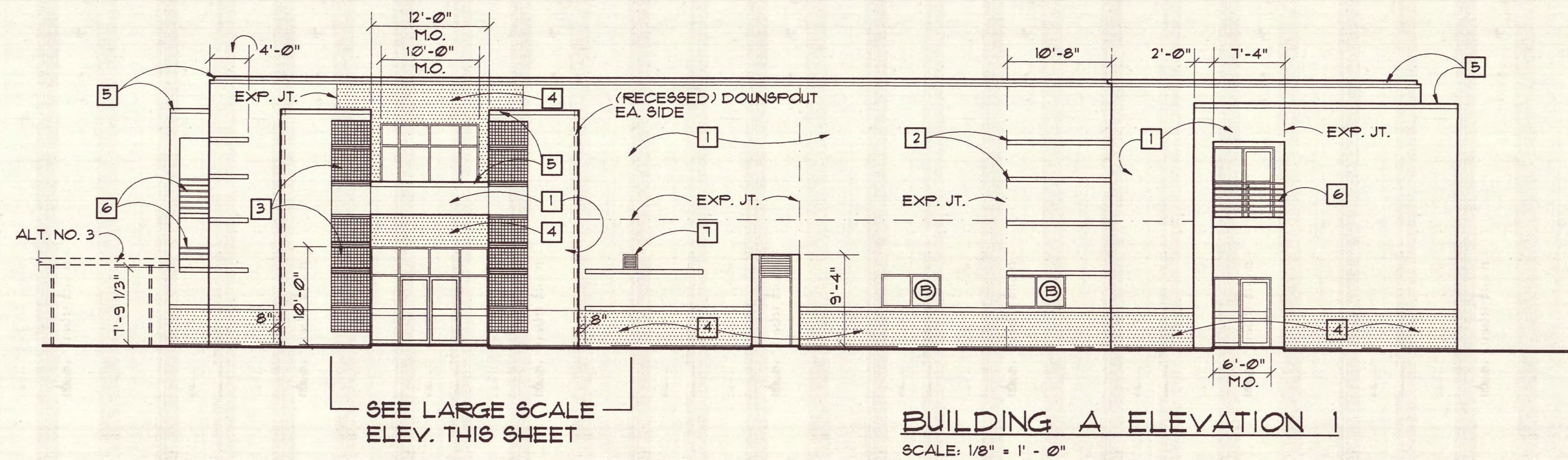
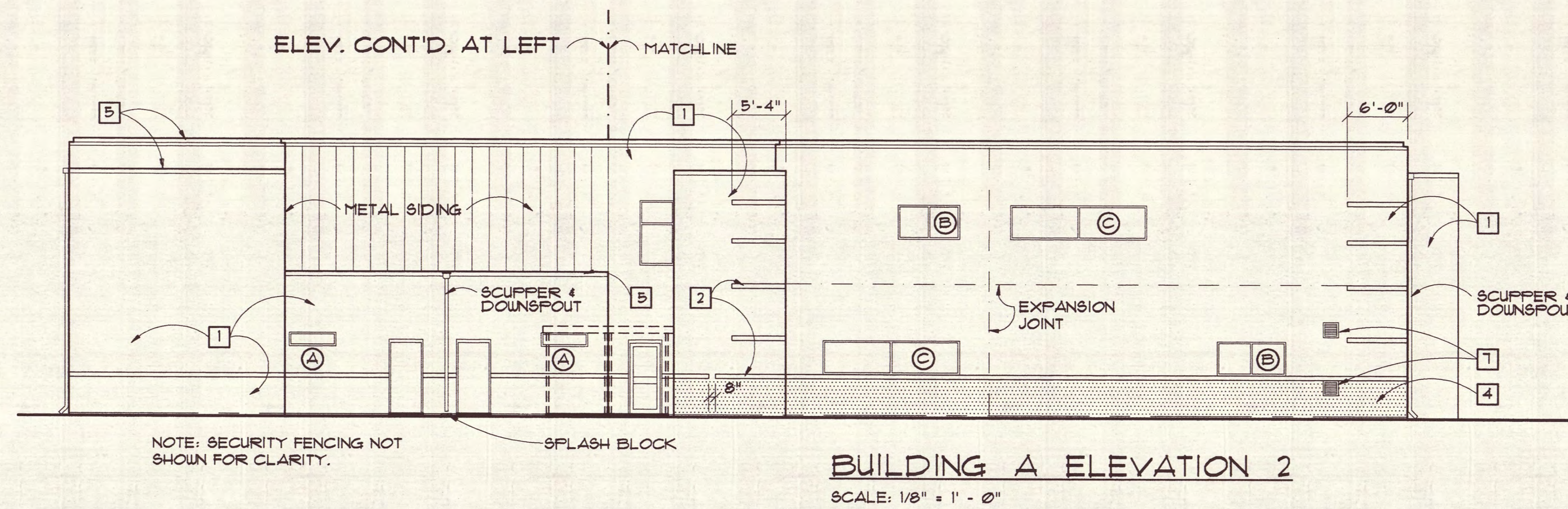
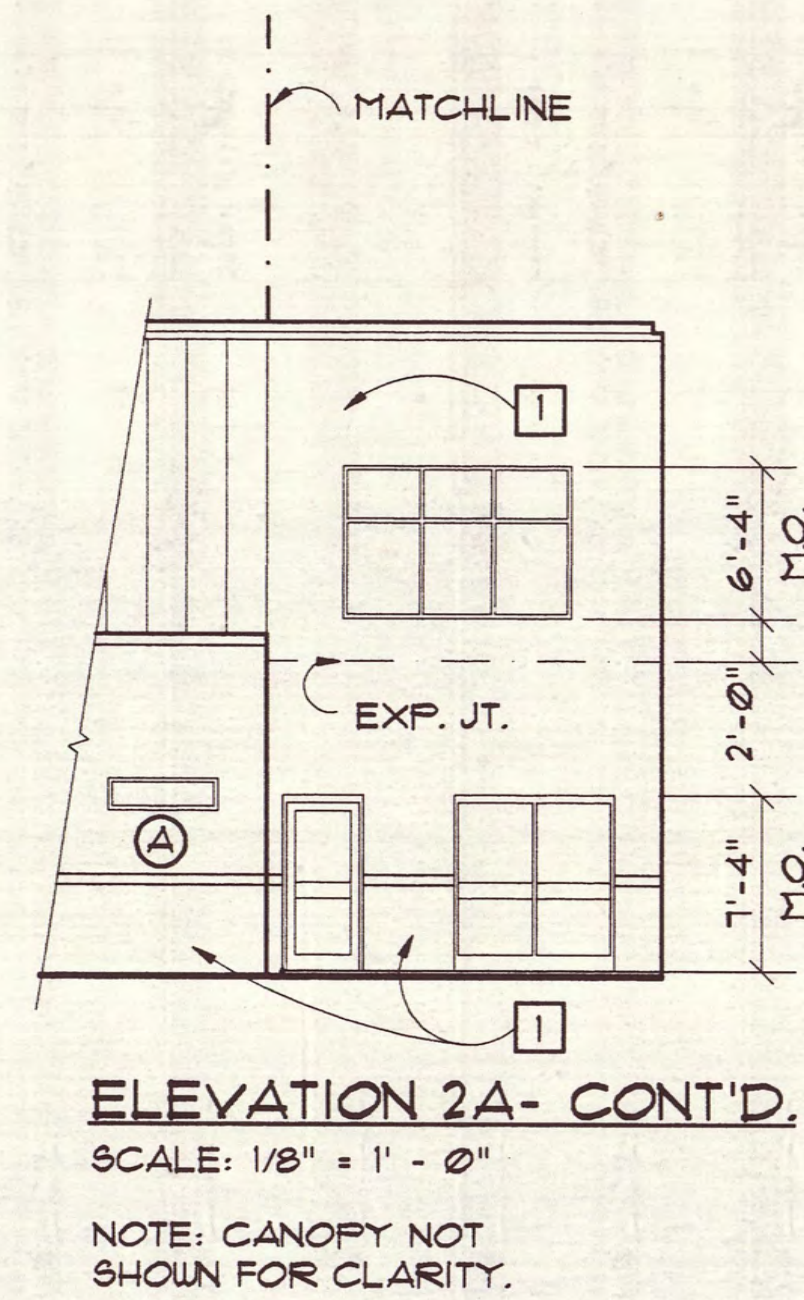


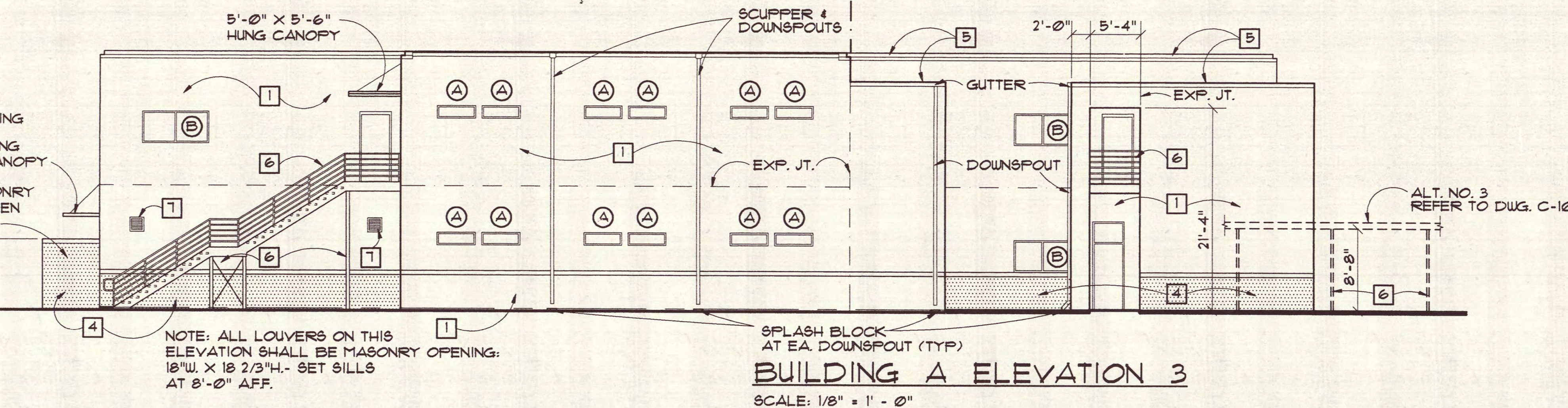
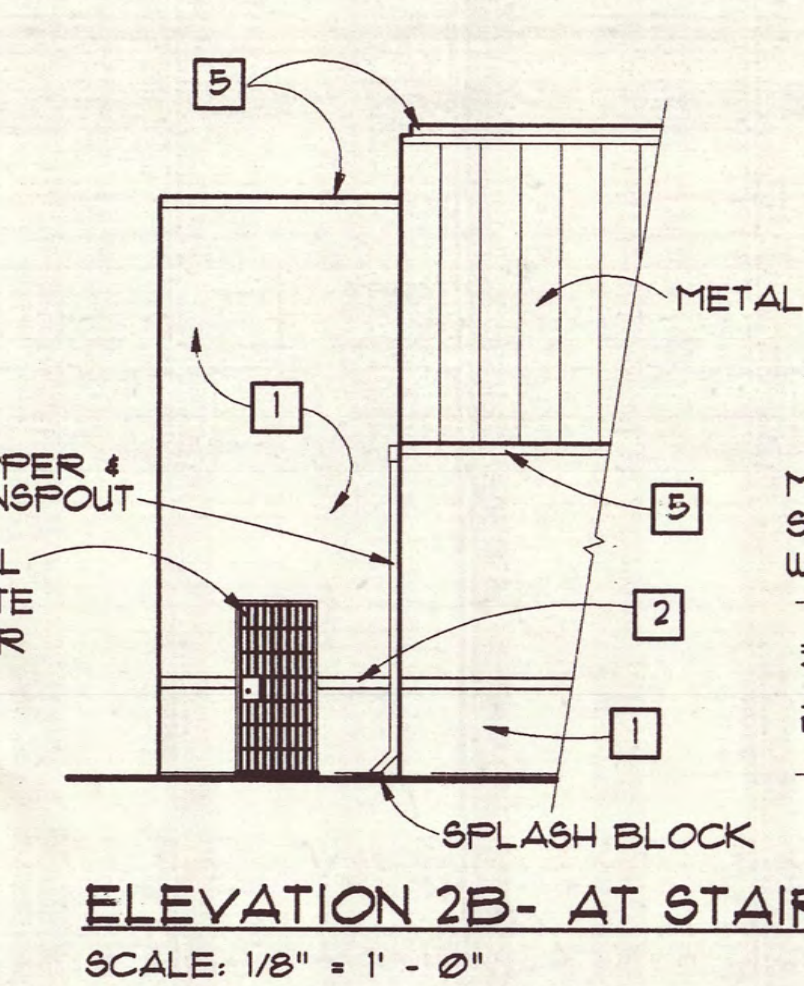
This drawing and the design shown thereon are the property of LIOULLO ASSOCIATES INC. The reproduction, copying, or use of this drawing without written consent is prohibited and any infringement will be subject to legal action.



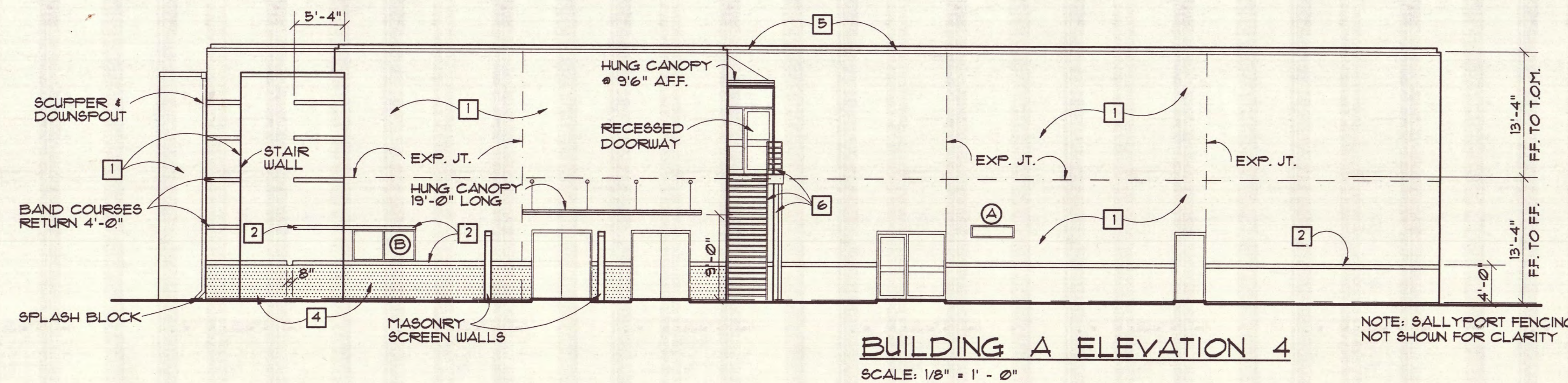
BUILDING A ELEVATION 1
SCALE: 1/8" = 1' - 0"



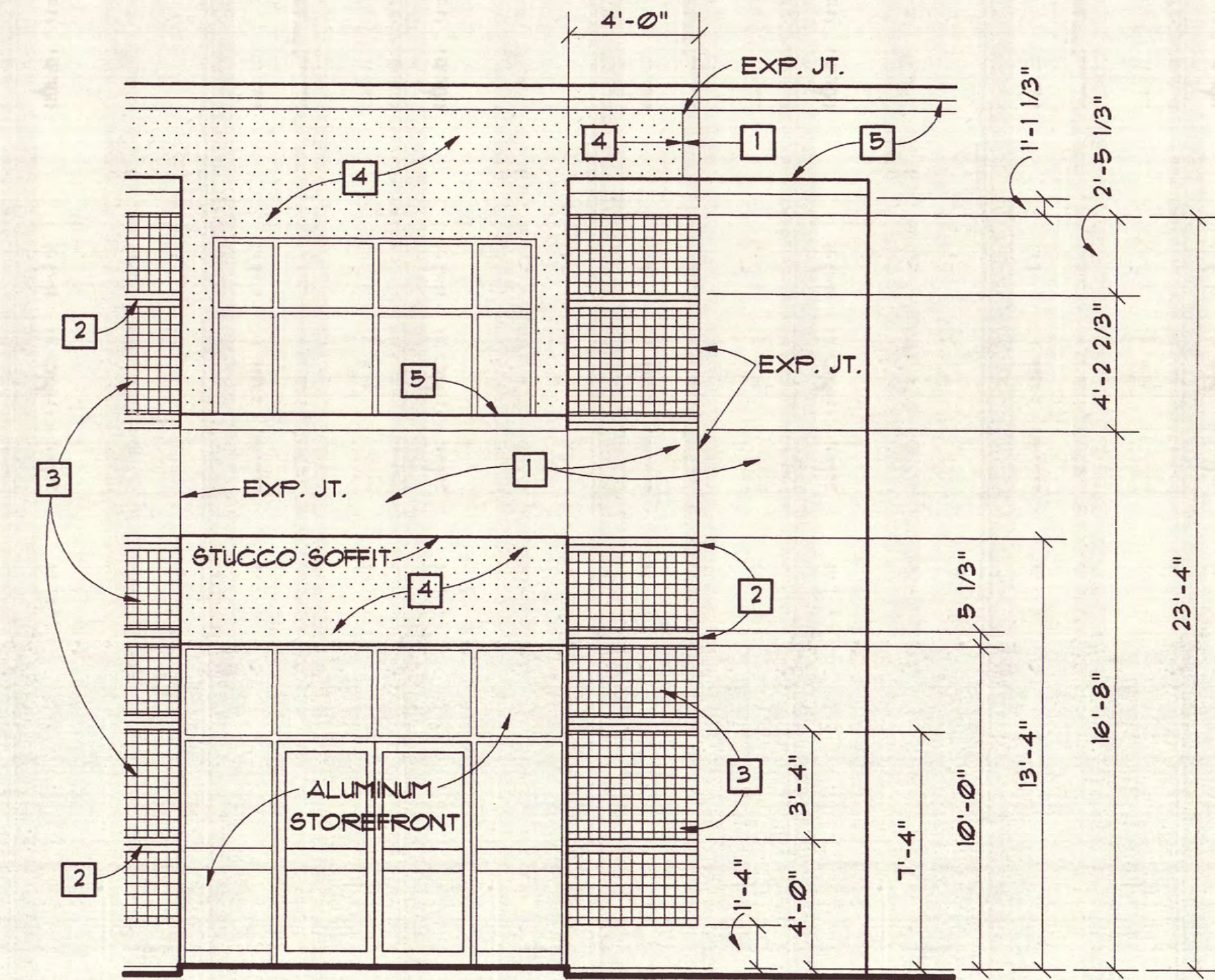
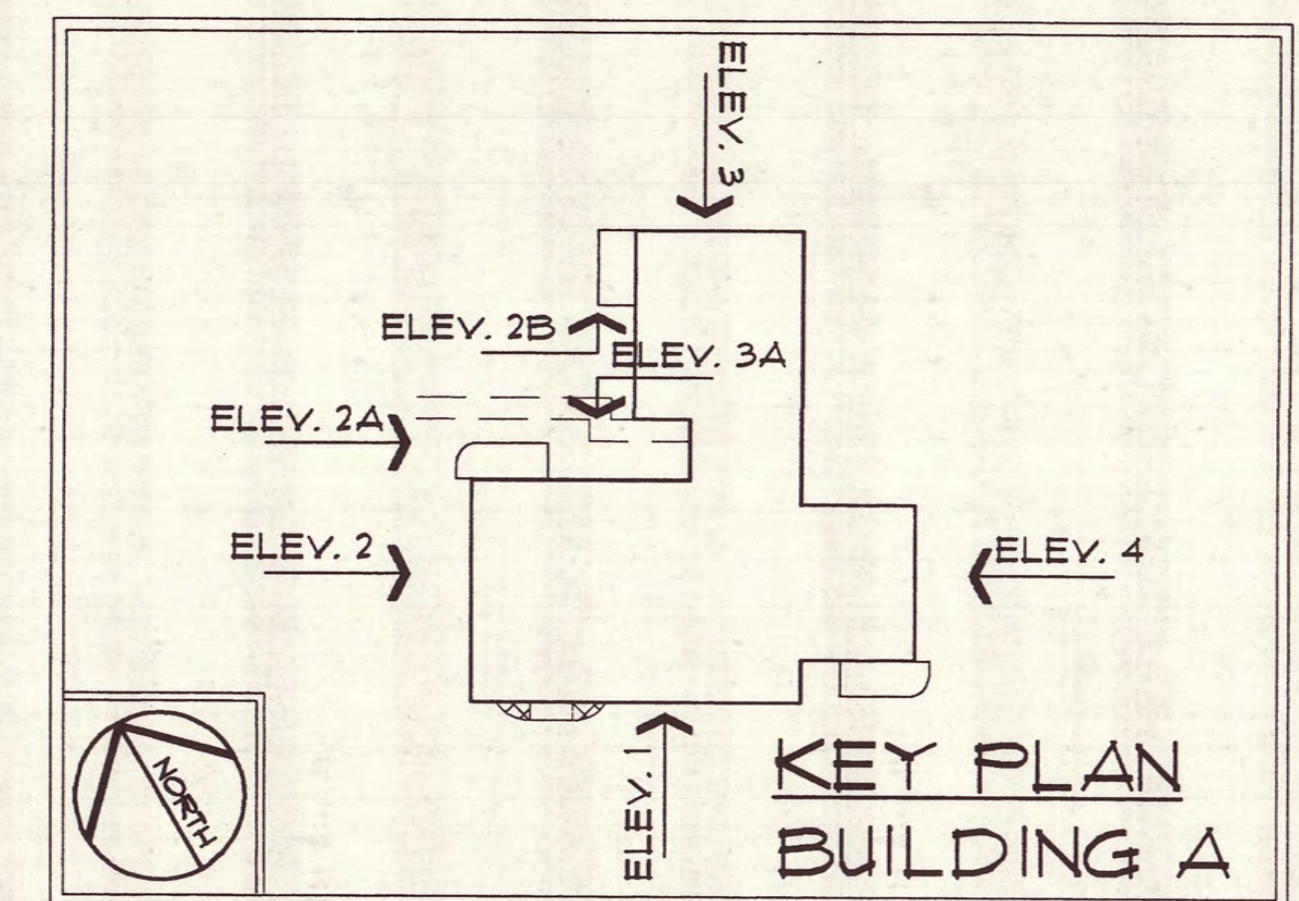
BUILDING A ELEVATION 2
SCALE: 1/8" = 1' - 0"



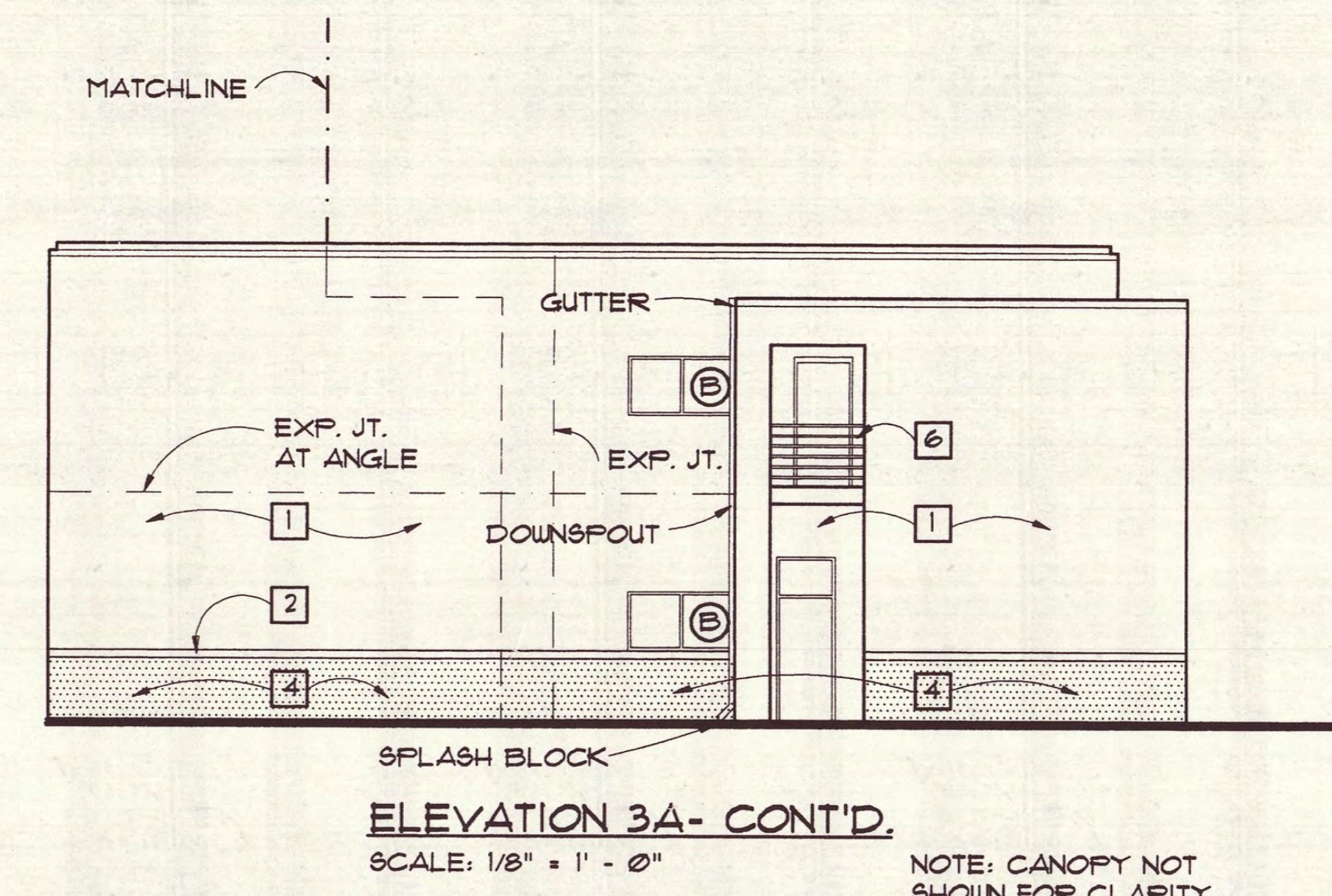
BUILDING A ELEVATION 3
SCALE: 1/8" = 1' - 0"



BUILDING A ELEVATION 4
SCALE: 1/8" = 1' - 0"



ENTRY ELEVATION
SCALE: 1/4" = 1' - 0"



ELEVATION 3A- CONT'D.
SCALE: 1/8" = 1' - 0"

ELEVATIONS NOTE LEGEND

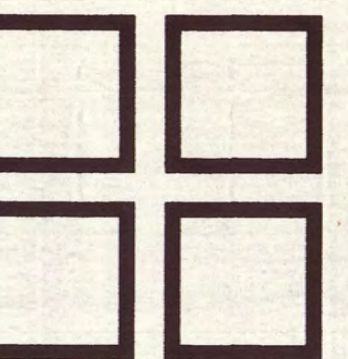
- 1 DENOTES CONCRETE BRICK VENEER WITH INTEGRAL WATERPROOFING- SEE SECTION 04200
- 2 DENOTES SOLID RED BRICK VENEER ACCENT COURSING- TYPICAL TWO COURSES HIGH- SEE SECTION 04200 (COURSES SHOWN SHADED ON ELEVATIONS)
- 3 DENOTES GLAZED BRICK VENEER- SEE SECTION 04200
- 4 DENOTES SPLIT FACE CMU VENEER: COLOR AS EQUAL TO METROMONT MATERIALS NO. L15-B 'DARK STORMY GREY'. ALSO SEE SECTION 04200
- 5 ALUMINUM FASCIA/ COPING SYSTEM- REFER TO LARGE SCALE DETAILS
- 6 EXTERIOR METAL COMPONENT(S) REQUIRE PAINTED FINISH- TYPE IVA- SEE DWG. A-26 AND SPECIFICATIONS
- 7 METAL LOUVERS- COORDINATE WITH MECHANICAL- REFER ALSO TO DIVISION 10 OF SPECIFICATIONS

GENERAL NOTES:

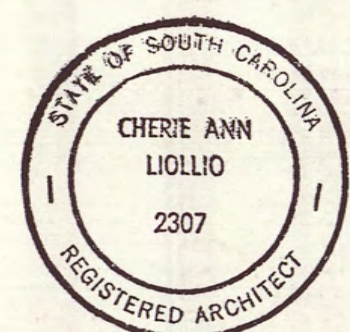
- (1) ALL VERTICAL DIMENSIONS ARE TYPICALLY REFERENCED FROM FINISH FLOOR ELEVATION.
- (2) REFER TO DWG. A-31 FOR DETAILED INFORMATION RE: STOREFRONT ENTRANCES AND WINDOW DESIGN.
- (3) REFER TO CIVIL DRAWINGS FOR ACTUAL GRADES AT BUILDING LINES AND FOR WALKWAYS.
- (4) REFER TO SHEET A-16 FOR ALL OVER FLOW SCUPPER LOCATIONS.



DORCHESTER COUNTY
LAW ENFORCEMENT COMPLEX
SUMMERVILLE, SC
HWY. 78



LIOULLO ASSOCIATES INC.
147 WAPP00 CREEK DRIVE SUITE 400 CHARLESTON, SC 29412 (803) 762-2222
SOUTHEASTERN DESIGN AND DEVELOPMENT INC.
115 WEST 7TH NORTH STREET, SUMMERVILLE, SC 29483 (803) 821-1686



DATE: 02-19-93
DRAWN BY: JAP
CHECKED BY: CAL
PROJECT No.
52803.00

REVISIONS:
02-26-93
DRAWING NO:
A-17