



Town of Medley

Office of Capital Projects & Development Services

7777 NW 72 Avenue, Medley, Florida 33166

Date:	January 21, 2019
Subject:	Bid for Construction of NW South River Drive between SR 826 and NW 72nd Avenue Roadway and Drainage
Solicitation Number:	ITB 2019-011
OCPDS Number:	PW-0112
Opening Date / Time:	January 31st, 2019 at 3:00 PM
ADDENDUM Number:	1

To all interested proposers:

The Town of Medley defines a solicitation “Addendum” as an addition to or amendment of the original terms, conditions, specifications, or instructions of a procurement solicitation (e.g. Invitation for Bids, Request for Proposals or Request for Qualifications), including but not limited to questions and answers, which are considered a material part of the solicitation.

Please note the following updates:

Bidder Questions (answers in *italics*):

1. What is the engineer’s estimate for this project?

The engineer’s opinion of probable cost is \$1,804,644.10 before contingency.

2. Please confirm per the plans provided for this project that there is no electrical work or material to be performed and will be done by others (FP&L). This was brought up in the mandatory meeting.

At this time, construction work related to the lighting within the project area is not included in the base scope of work.

Revisions to the Project Manual (Part 2 – Bid Documents, Forms & Contract) as follows:

Page “Part 2-13”: Updated bid table attached below.

- Item 82 has been revised

Revisions to the Construction Plans as follows:

Updated sheets below.

- R-1210, addition of sedimentation/silt fence detail, revision 1
- R-1300, addition of turbidity barrier, revision 1
- E-6, material of light poles specified as fiberglass, revision 1

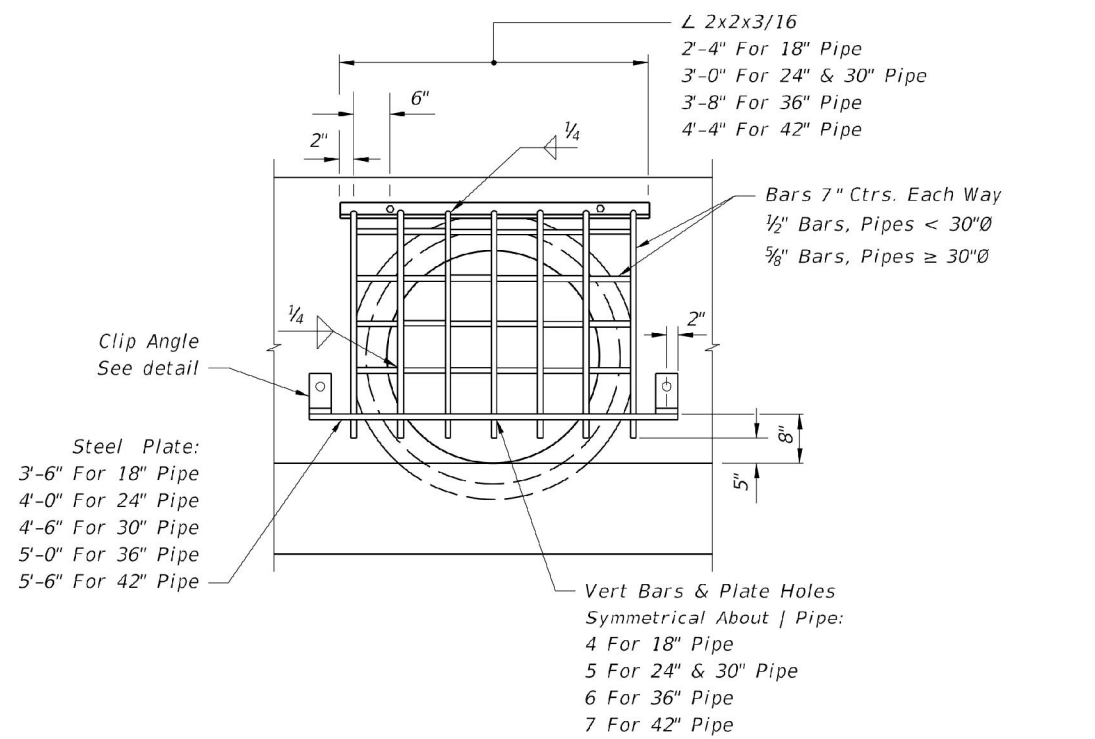
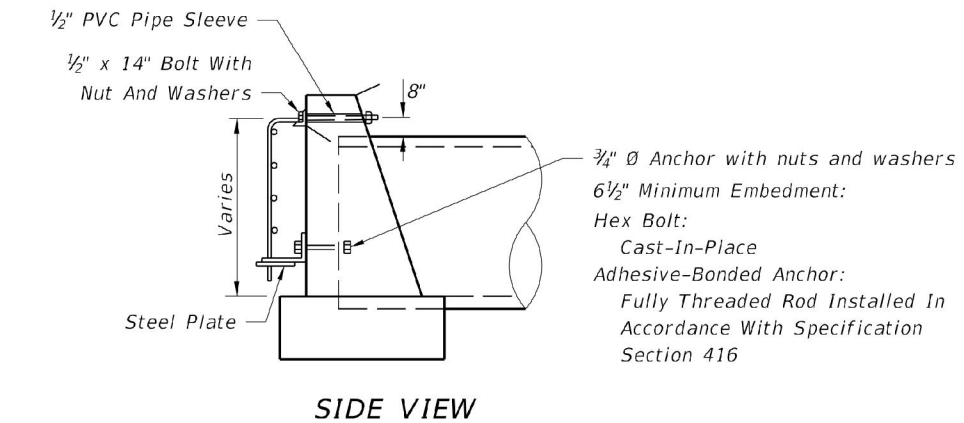
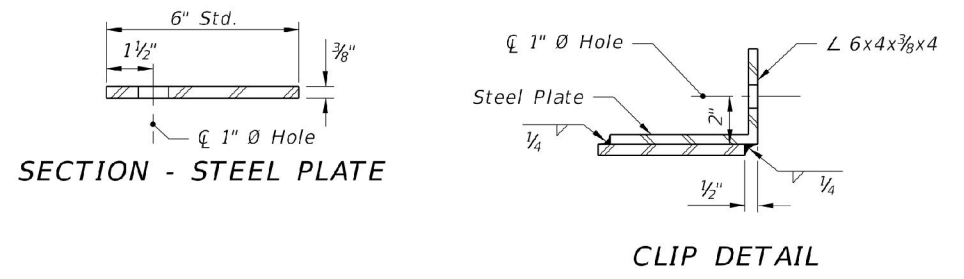
**BID PROPOSAL
FOR ITB No. 2019-011
NW SOUTH RIVER DRIVE SR826-72A ROADWAY AND DRAINAGE**

Item No.	Description of Work	Unit	Quantity	Unit Price (\$)	Written Unit Price (\$)	Extended Cost (\$)
71	BORRICHIA ARBORESCENS	EA	690			
72	ARACHIS GLABRATA - PERENNIAL PEANUT	SF	21760			
73	PERFORMANCE TURF, SOD	SF	3000			
74	PLANTING SOIL (3" DEPTH)	SY	954			
75	MULCH (3" DEPTH)	SY	954			
76	PROJECT INFORMATION SIGNS	EA	3			
77	ELECT DISP SIGN, REMOVE- GROUND MOUNT, ASSEMBLY	EA	2			
78	ELEC DIS SIGN- F&I GM- SOLAR, SPEED FLAS, ASSEMBLY	EA	2			
79	SINGLE POST SIGN, F&I GM, <12 SF, ASSEMBLY	EA	19			
80	SINGLE POST SIGN, REMOVE, ASSEMBLY	EA	26			
81	RETRO-REFLECTIVE PAVEMENT MARKERS	EA	252			
82	PAINTED PAVT, GREEN (BIKE LANE)	SY	10022 1114			

Name of Bidder

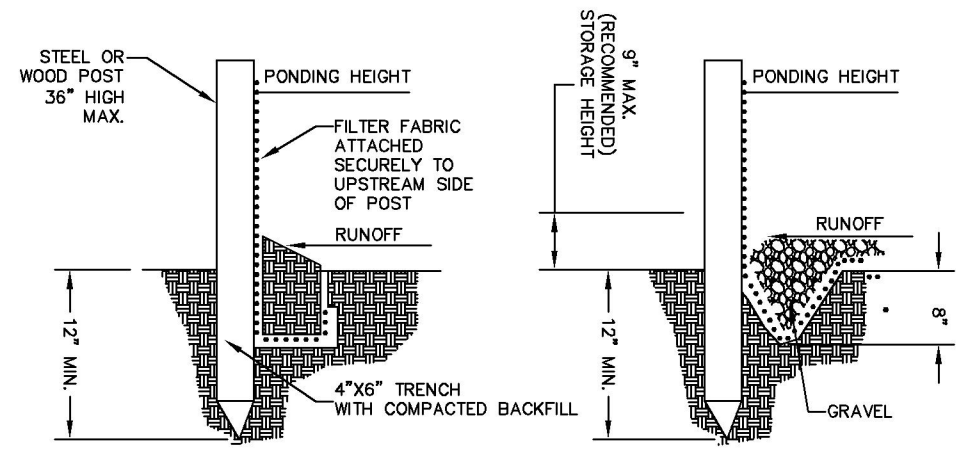
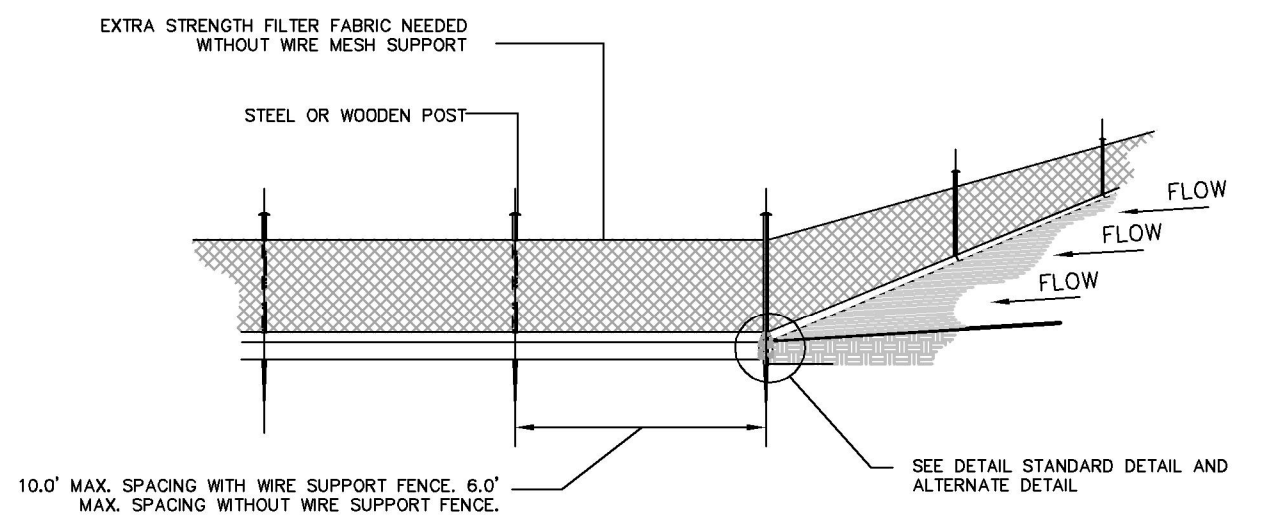
Signature of Bidder

This document, together with the concepts and designs presented herein, is intended only for the specific purpose and client for which it was prepared. Reuse of any information contained in this document without written authorization and approval by Kimley-Horn and Associates, Inc. shall be without liability to Kimley-Horn and Associates, Inc.



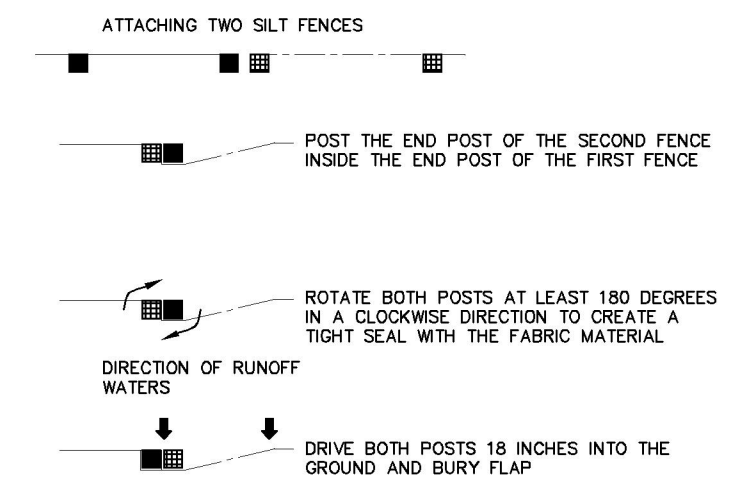
Pipe Dia.	18"	24"	30"	36"	42"
Grate (Lbs.)	48	58	74	90	111

Note: Guards to be constructed only at locations specifically called for in plans.
MODIFIED FDOT DETAIL OF GUARD AT PIPE END (MANATEE GRATE)
 N.T.S.



STANDARD DETAIL
 TRENCH WITH NATIVE BACKFILL

ALTERNATE DETAIL
 TRENCH WITH GRAVEL



NOTES:

- CONTRACTOR SHALL PERFORM DAILY INSPECTIONS OF GEO-TEXTILE FABRIC BARRIER AND AS NECESSARY REPLACE OR REPAIR AS REQUIRED. SPECIFICALLY AFTER STORM EVENTS AND LARGE RAINFALL EVENTS.
- SEDIMENTATION AND DEBRIS THAT ARE REMOVED FROM BARRIERS SHALL BE LEGALLY DISPOSED OF AT AN AUTHORIZED OFF-SITE DISPOSAL FACILITY.

SEDIMENTATION/SILT FENCE
 N.T.S.

No.	REVISIONS	DATE	BY
1	REVISION 1	01.21.19	JPG



Kimley»Horn
 © 2018 KIMLEY-HORN AND ASSOCIATES, INC.
 355 ALHAMBRA CIRCLE, SUITE 1400, CORAL GABLES, FL 33134
 PHONE: 305-673-2025
 WWW.KIMLEY-HORN.COM CA 00000696

KHA PROJECT	043637031
DATE	DEC 2018
SCALE	AS SHOWN
DESIGNED BY	BJF
DRAWN BY	JPG
CHECKED BY	BJF

NWSRD (826-72A) PW-0112
 PREPARED FOR
 TOWN OF MEDLEY
 FLORIDA

LICENSED PROFESSIONAL
 BARTON J. FYE, P.E.
 73898

MISCELLANEOUS DETAILS

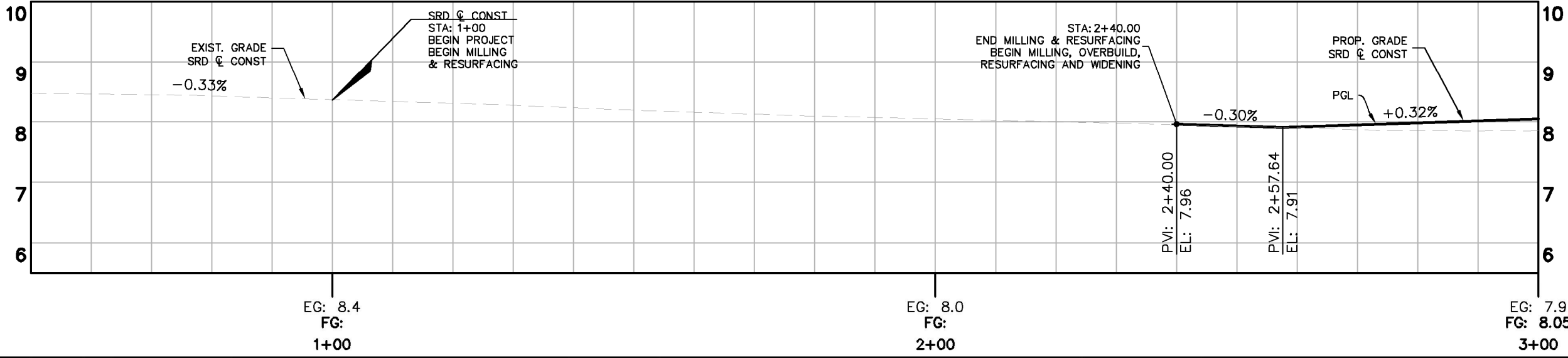
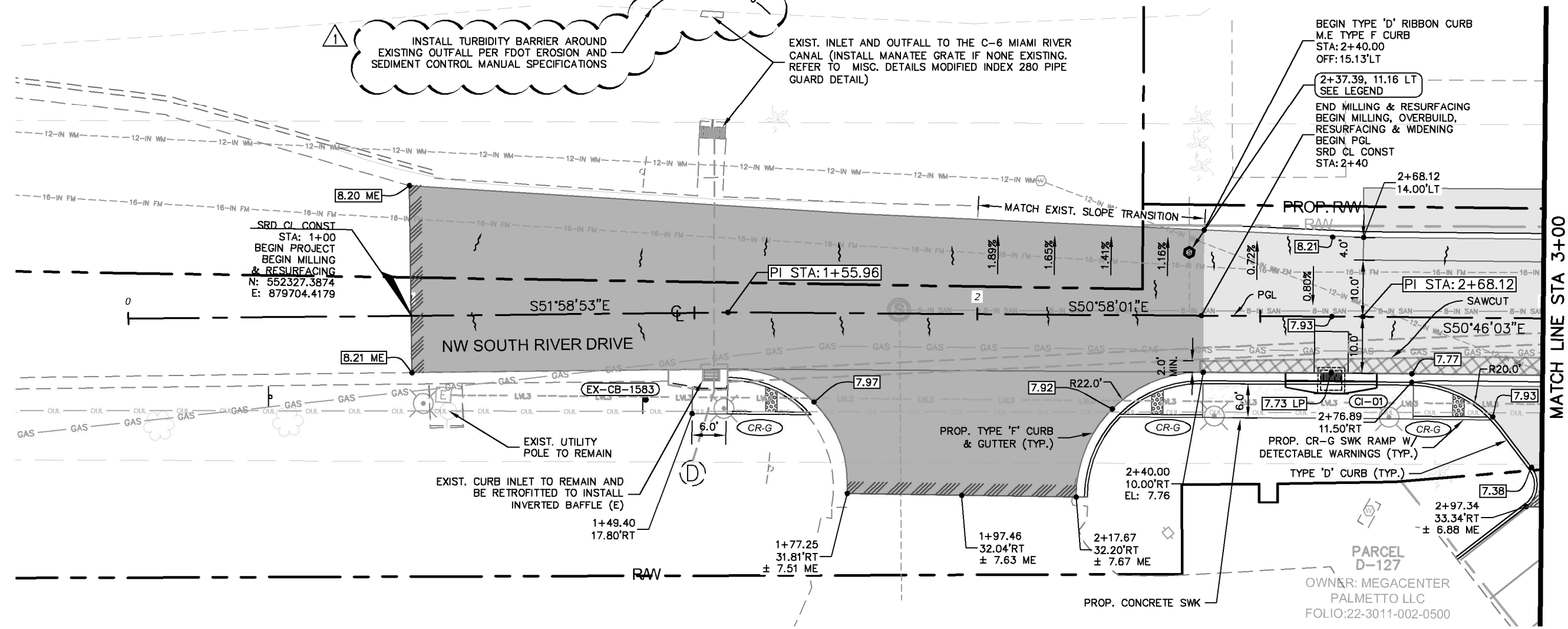
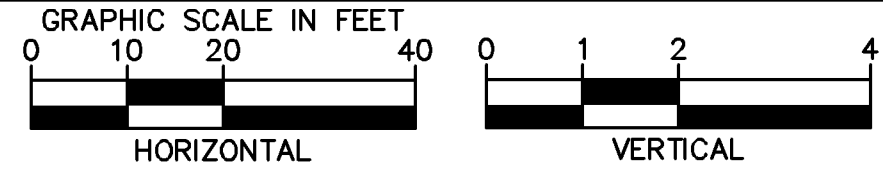
SHEET NUMBER
 R-1210

Plotted By: Gonzalez, Juan Sheet Set: NWSRD (826-72A) PW-0112 Layout: R-1300 ROADWAY PLAN & PROFILE January 21, 2019 09:21:42am K:\MIA_ENV\043637031 - NWSRD (74A-72A) PACE (P\0112.05)\CIVIL\CADD\PlanSheets\R-1300_ROADWAY PLAN (1).dwg

This document, together with the contracts and design presented herein, is intended only for the specific purpose and client for which it was prepared. Reuse of any portion of this document without written authorization and approval by Kimley-Horn and Associates, Inc. shall be without liability to Kimley-Horn and Associates, Inc.

LEGEND

- MILLING, OVERBUILD & RESURFACING
- MILLING & RESURF.
- WIDENING
- DRAINAGE STR. NAME
- PROP. MANHOLE
- PROP. PIPE
- PROP. EXFILTRATION TRENCH
- CONCRETE SWK
- STAMPED ASPHALT
- INSTALL 6" DIP SAN. CLEAN-OUT IN EXIST. SAN S LATERAL SEE MISCELLANEOUS DETAILS



No.	REVISIONS	DATE	BY
1	REVISION 1	01.21.19	JPG



Kimley»Horn
 © 2018 KIMLEY-HORN AND ASSOCIATES, INC.
 355 ALHAMBRA CIRCLE, SUITE 1400, CORAL GABLES, FL 33134
 PHONE: 305-673-2025
 WWW.KIMLEY-HORN.COM CA 00000696

KHA PROJECT	043637031
DATE	DEC 2018
SCALE	AS SHOWN
DESIGNED BY	BJF
DRAWN BY	JPG
CHECKED BY	BJF

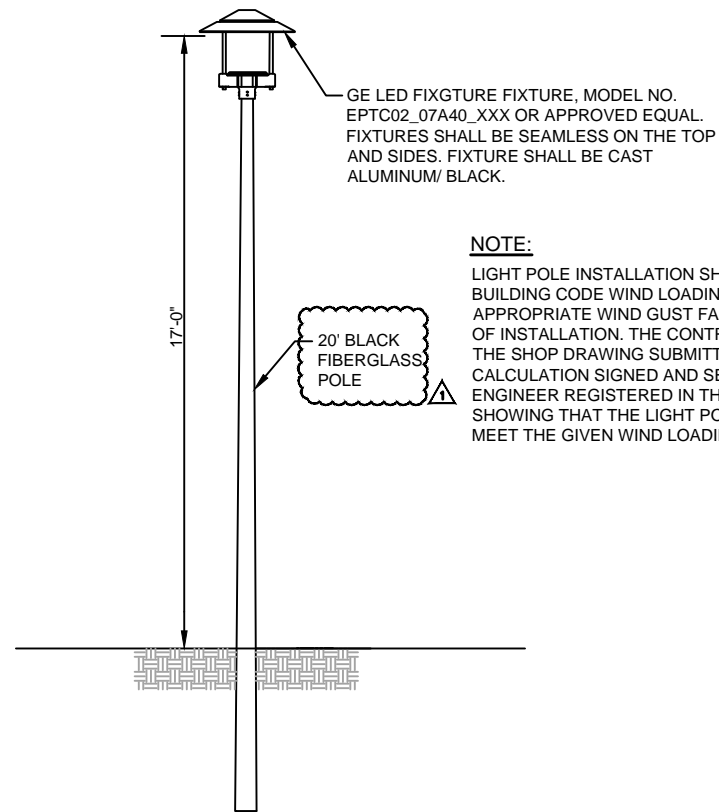
NWSRD (826-72A) PW-0112
 PREPARED FOR
TOWN OF MEDLEY
 TOWN OF MEDLEY FLORIDA

LICENSED PROFESSIONAL
BARTON J. FYE, P.E.
 73898

ROADWAY PLAN & PROFILE

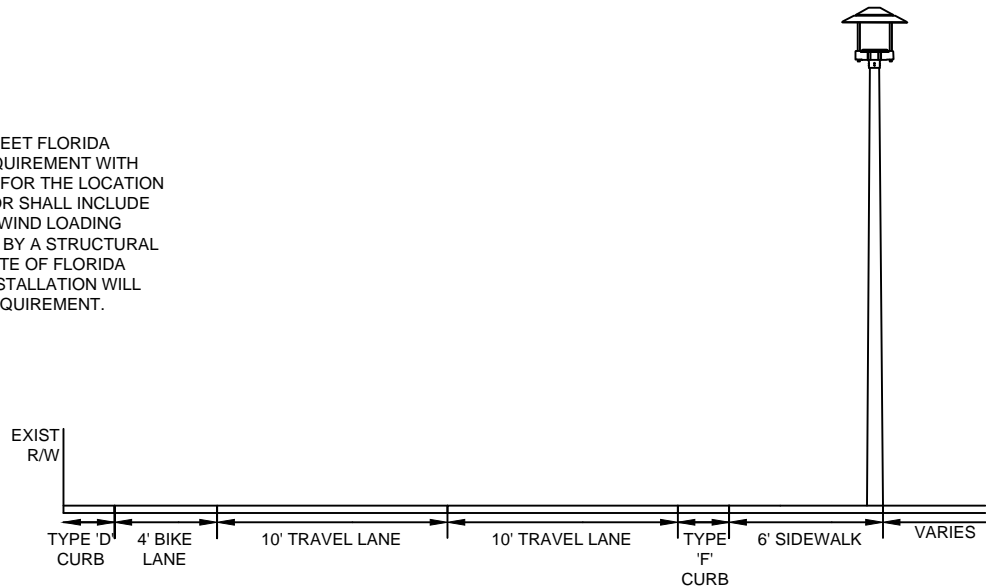
SHEET NUMBER
R-1300

This document, together with the concepts and designs presented herein, is intended only for the specific purpose and client for which it was prepared. Reuse of and improper reliance on this document without written authorization and approval by Hilliers-Horn and Associates, Inc. shall be without liability to Hilliers-Horn and Associates, Inc.

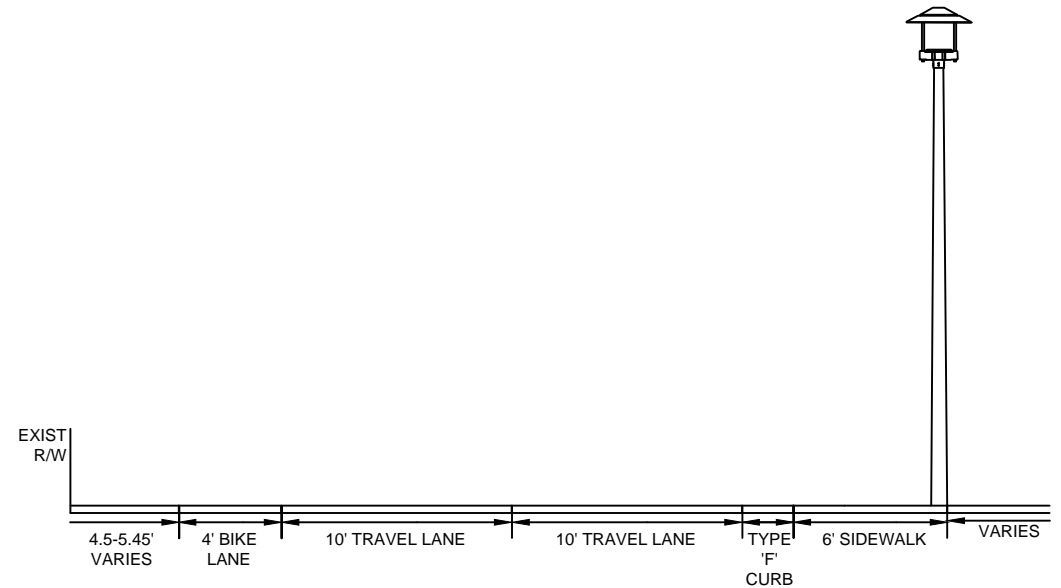


NOTE:
 LIGHT POLE INSTALLATION SHALL MEET FLORIDA BUILDING CODE WIND LOADING REQUIREMENT WITH APPROPRIATE WIND GUST FACTOR FOR THE LOCATION OF INSTALLATION. THE CONTRACTOR SHALL INCLUDE THE SHOP DRAWING SUBMITTAL, A WIND LOADING CALCULATION SIGNED AND SEALED BY A STRUCTURAL ENGINEER REGISTERED IN THE STATE OF FLORIDA SHOWING THAT THE LIGHT POLE INSTALLATION WILL MEET THE GIVEN WIND LOADING REQUIREMENT.

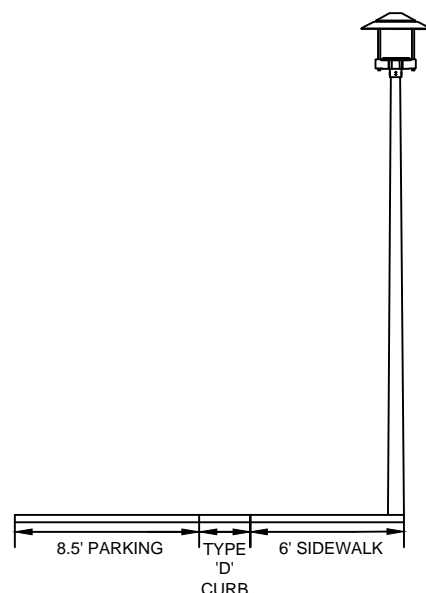
ROADWAY LIGHTING FIXTURE AND POLE DETAIL
 NOT TO SCALE



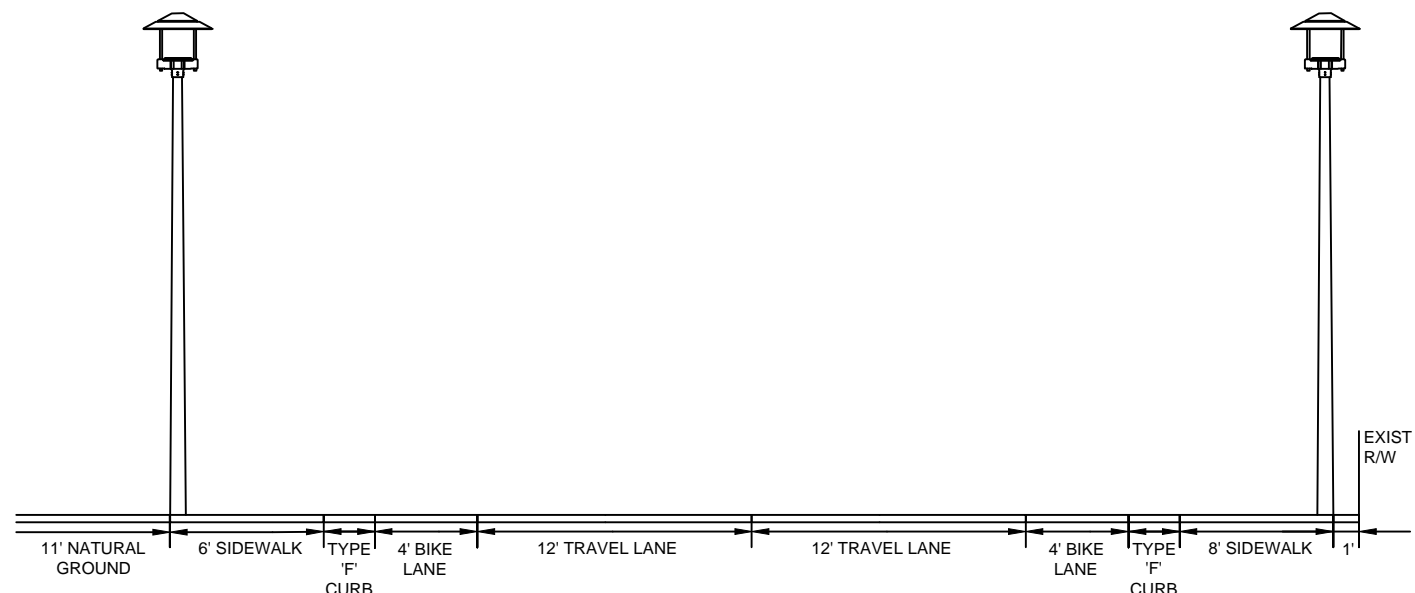
TYPICAL SECTION NW SOUTH RIVER DR
 (NOT TO SCALE)
 2+40.00 TO STA. 3+11.00
 STA. 8+15.00 TO STA. 14+40.00
 STA. 21+73.31 TO STA. 22+20.78



TYPICAL SECTION NW SOUTH RIVER DR
 (NOT TO SCALE)
 3+11.00 TO STA. 6+52.51
 STA. 21+50.00 TO STA. 23+22.4



PARALLEL PARKING TYPICAL LAYOUT
 (NOT TO SCALE)



TYPICAL SECTION NW 74TH AVE
 (NOT TO SCALE)
 STA. 18+30.00 TO STA. 21+67.00

REV 1	01/16/2019	ALC
No.	REVISIONS	DATE BY



HILLERS ELECTRICAL ENGINEERING, INC.
 23257 STATE ROAD 7, SUITE 100
 BOCA RATON, FLORIDA 33428
 (561) 451-9165
 (561) 451-4886 FAX
 LICENSE NO: EB 0006877

KHA PROJECT
 043637031
 DATE
 SCALE AS SHOWN
 DESIGNED BY
 DRAWN BY
 CHECKED BY

NWSRD (826-72A) PW-0112
 PREPARED FOR
TOWN OF MEDLEY

TOWN OF MEDLEY FLORIDA DATE:

AMY L. CHAMPAGNE-BAKER
 FL PE 73735

**ELECTRICAL
 DETAILS**

SHEET NUMBER
E-6